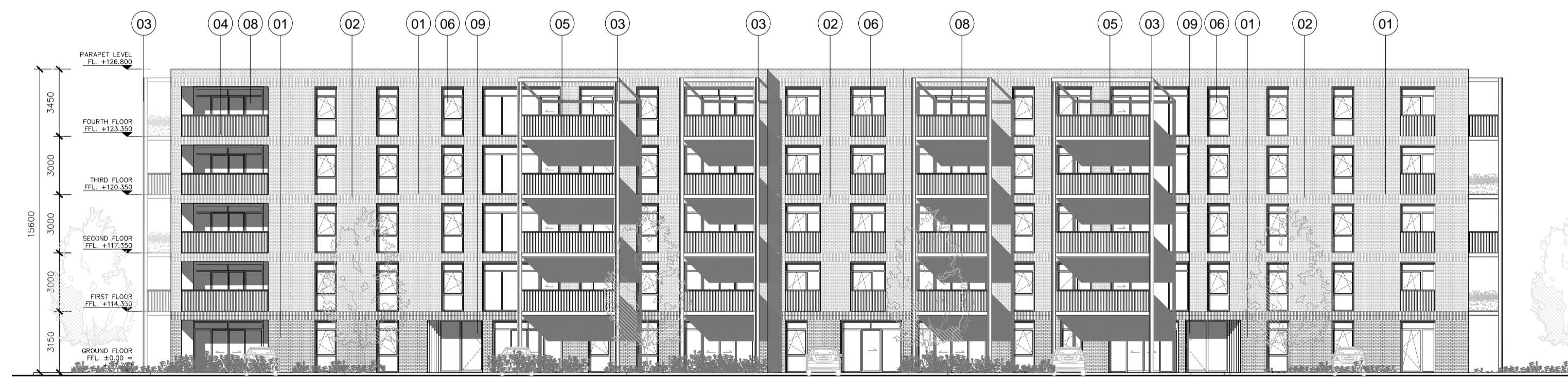


01 Apartment Block B
PA-A-301 Proposed South-West Elevation - 1:200



02 Apartment Block B
PA-A-301 Proposed South-East Elevation - 1:200



04 Apartment Block B
PA-A-301 Proposed North-East Elevation - 1:200



05 Apartment Block B
PA-A-301 Proposed North-West Elevation - 1:200

ISSUED FOR PLANNING ONLY, NOT FOR CONSTRUCTION

<p>NOTES:</p> <p>Do not scale from this drawing.</p> <p>Any discrepancies found on site to be reported to Darmody Architects immediately.</p> <p>Any discrepancies found on drawings to be reported to Darmody Architects immediately.</p> <p>Refer to engineers drawings for structural details.</p> <p>All dimensions sized to blockwork.</p>	<table border="1"> <thead> <tr> <th>Rev.</th> <th>Description</th> <th>Date</th> <th>Initials</th> </tr> </thead> <tbody> <tr> <td>XREF'S</td> <td></td> <td></td> <td></td> </tr> <tr> <td>CAD REF.</td> <td></td> <td></td> <td></td> </tr> </tbody> </table>			Rev.	Description	Date	Initials	XREF'S				CAD REF.				<p>DRAWING KEY</p> <p>01 - Selected brickwork to Architect's detail & specification - 2No. complimentary tones of brick proposed. Please refer to architects Materials and Finishes report for reference images.</p> <p>02 - Double header horizontal bands within stretcher bond coursing at floor levels to brickwork facades.</p> <p>03 - Free standing steel framed structures to support stacked balconies consisting of Powder Coated I-Beams with metal balustrade to selected colour and Architects Detail & Specification.</p> <p>04 - Recessed balcony/terrace with metal balustrade to selected colour and Architects Detail & Specification.</p> <p>05 - Balcony element & metal balustrade supported by framed steel structure to selected colour & Architects Detail & Specification.</p> <p>06 - Selected uPVC or similar double glazed windows with operable sections and fixed glazed panel.</p> <p>07 - Selected aluminium or similar double glazed windows as AOV with architectural cladding/spandrel panels to selected colour to Architects selection and specification.</p> <p>08 - Selected uPVC or similar sliding door and fixed glazed panels to access the external balconies/terraces.</p> <p>09 - Recessed entrance portal with powder coated architectural cladding and stepped decorative brickwork.</p> <p>10 - Selected hit-and-miss brickwork pattern to Architect's detail & specification.</p> <p>11 - Selected cement fibre panels to facade with coloured infill panels.</p>		<p>SCALE BAR</p> <p>0 10 20m</p>		<p>DRAWING KEY</p>		<p>NORTH POINT</p>		<p>creative innovative flexible</p> <p>darmody architecture</p> <p>91 Townsend Street, Dublin 2 353 1 672 9907 info@darmodyarchitecture.com darmodyarchitecture.com</p>					<p>Project: Strategic Housing Development, on site at Mill Road, Saggart, Co. Dublin</p> <p>Title: Apartment Blocks A & B Proposed Elevations & Sections Block B</p> <p>Client: Tetrarch Residential Ltd.</p>	
	Rev.	Description	Date	Initials																										
XREF'S																														
CAD REF.																														
<table border="1"> <thead> <tr> <th>Rev. No.</th> <th>Scale</th> <th>Date</th> <th>Dm. By</th> <th>Chkd. By</th> <th>Issue</th> </tr> </thead> <tbody> <tr> <td></td> <td>1:200 @ A1</td> <td>15/11/2021</td> <td>Marco Pittaniglio</td> <td>Jennifer Lynch</td> <td>PLANNING</td> </tr> </tbody> </table>			Rev. No.	Scale	Date	Dm. By	Chkd. By	Issue		1:200 @ A1	15/11/2021	Marco Pittaniglio	Jennifer Lynch	PLANNING	<p>Dwg. No. PA-A-301</p>		<p>Job No. 19037</p>													
Rev. No.	Scale	Date	Dm. By	Chkd. By	Issue																									
	1:200 @ A1	15/11/2021	Marco Pittaniglio	Jennifer Lynch	PLANNING																									