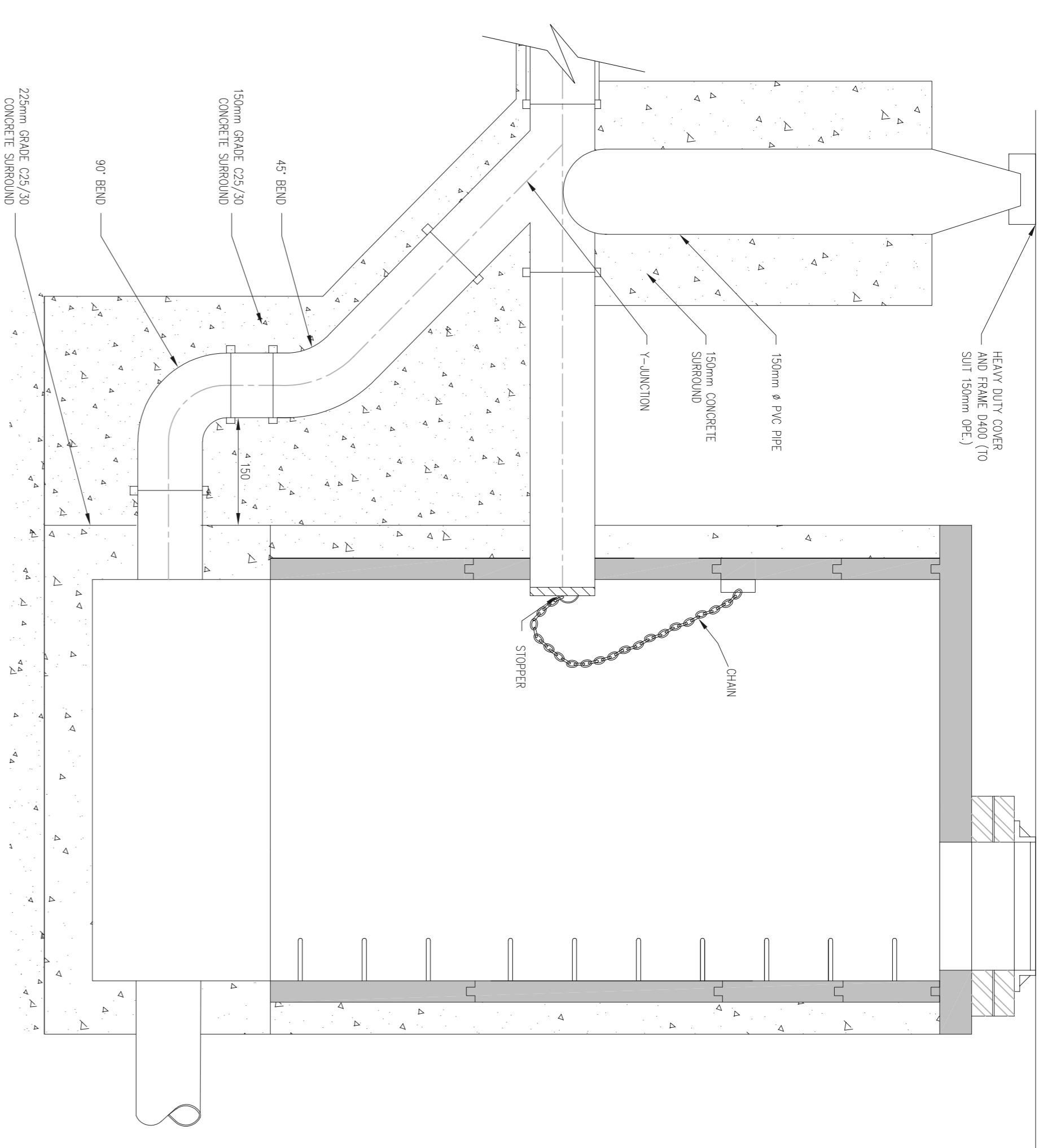
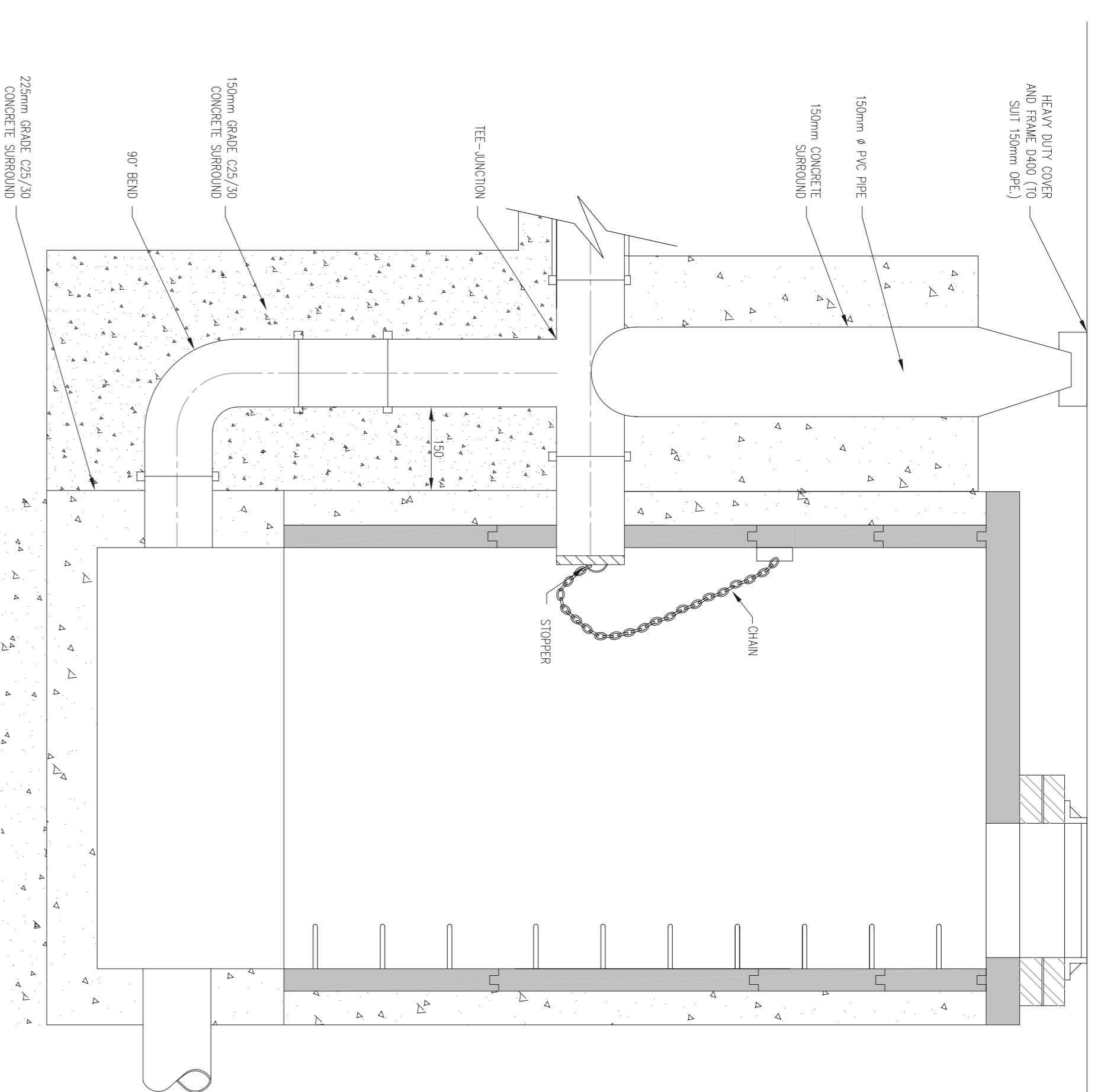


# NOTES

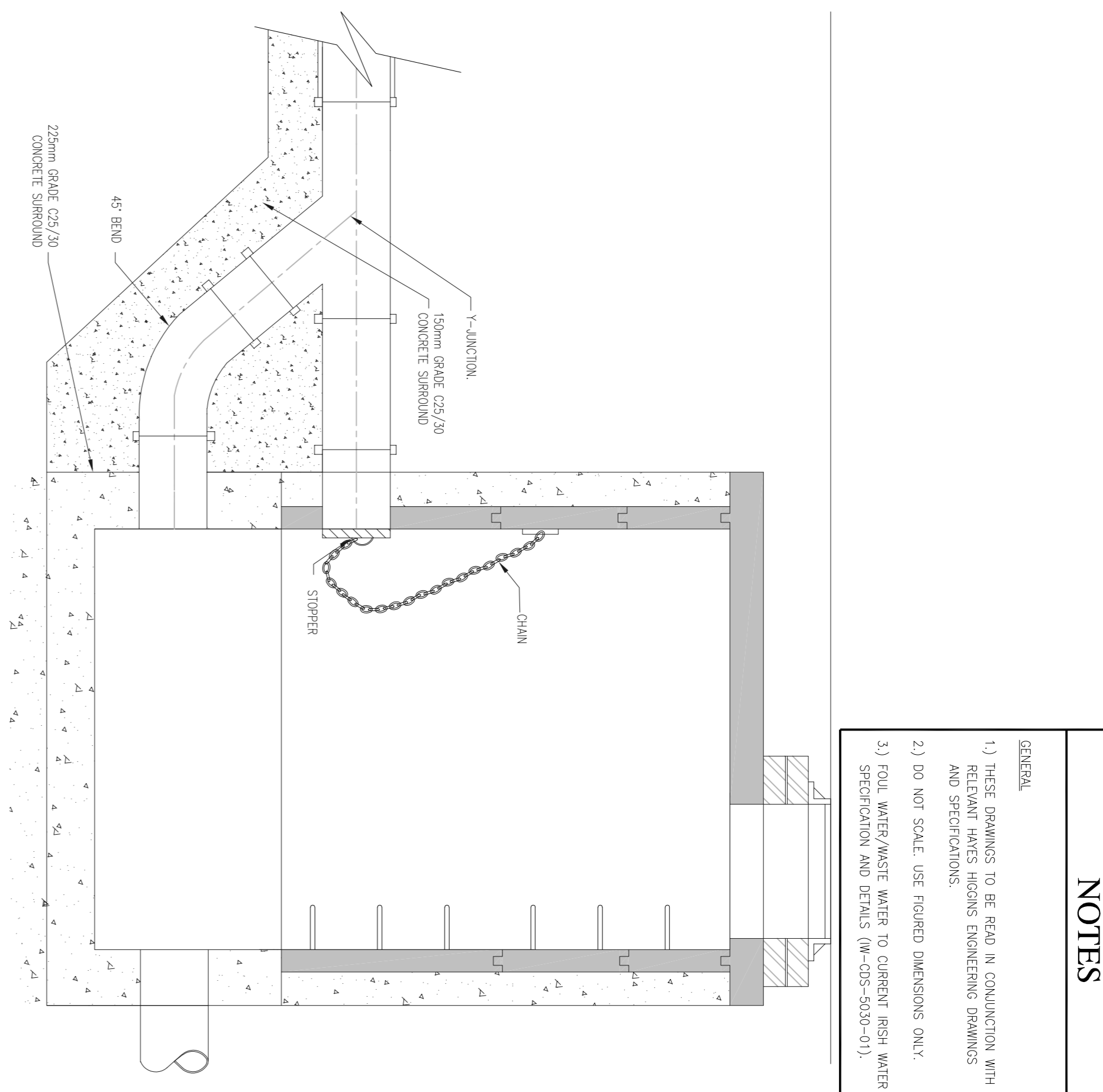
- GENERAL
- 1) THESE DRAWINGS TO BE READ IN CONJUNCTION WITH ALL RELEVANT HAYES HIGGINS ENGINEERING DRAWINGS AND SPECIFICATIONS.
  - 2) DO NOT SCALE. USE FIGURED DIMENSIONS ONLY.
  - 3) FOULED WATER/WASTE WATER TO CURRENT FRESH WATER SPECIFICATION AND DETAILS (HW-CSS-5030-01)



TYPE No.1  
150mm - 450mm Ø (N.C.) DEEP GREATER THAN 1700mm  
500mm - 900mm Ø (N.C.) DEEP GREATER THAN 2300mm

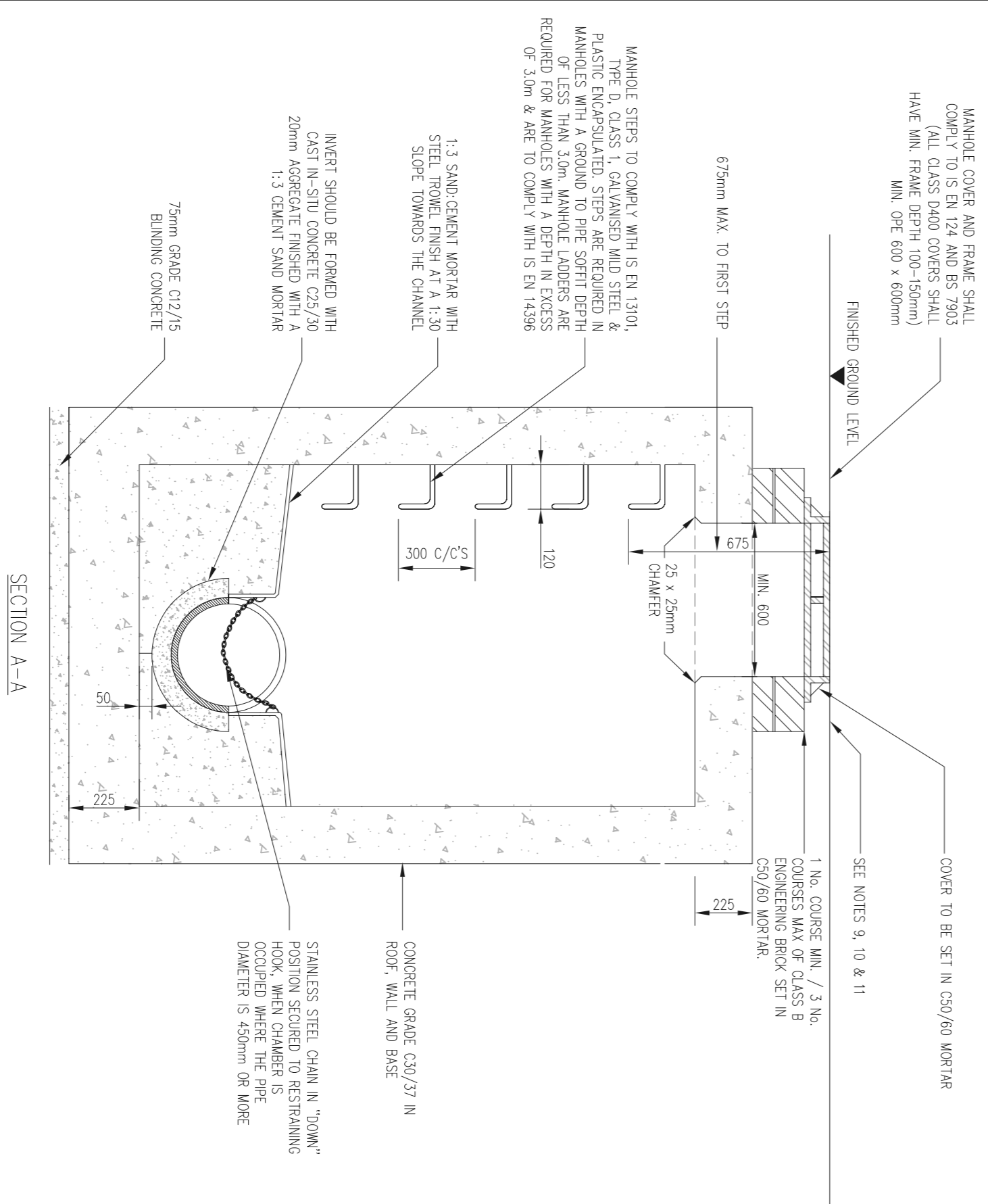


TYPE No.2  
150mm - 450mm Ø (N.C.) DEEP GREATER THAN 900mm AND LESS THAN 1700mm  
500mm - 900mm Ø (N.C.) DEEP GREATER THAN 1300mm AND LESS THAN 2300mm



TYPE No.3  
150mm - 450mm Ø (N.C.) DEEP GREATER THAN 600mm AND LESS THAN 900mm  
500mm - 900mm Ø (N.C.) DEEP GREATER THAN 600mm AND LESS THAN 1000mm

## DETAIL 10 - BACKDROP MANHOLES



MANHOLE COVER AND FRAME SHALL COMPLY TO IS EN 124 AND BS 7933 HAVE MIN. FRAME DEPTH 100-150mm MIN. CPE 600 x 600mm

FINISHED GROUND LEVEL

COVER TO BE SET IN C50/60 WORKPAC

1. No. CONCRETE MIN. 7. No. COURSES OF CLASS 3 ENGINEERING BRICK SET IN C50/60 WORKPAC.

75mm GRADE C25/30 BLINDING CONCRETE

1:3 SAND CEMENT MORTAR WITH STEEL TRIMMEL FINISH AT A 1:30 SLOPE TOWARDS THE CHANNEL

1:3 SAND CEMENT MORTAR WITH 20mm AGGREGATE FINISH WITH A 1:30 SLOPE TOWARDS THE CHANNEL

MANHOLE STEPS TO COMPLY WITH IS EN 12114 TYPE D CLASS 3. CHANNELS WITH STEEL PLASTIC ENCASED STEPS ARE REQUIRED IN MANHOLES WITH A GROUND TO PIPE SOFFIT DEPTH REQUIRING LESS THAN 100mm MINIMUM ACCESS OF 30mm & ARE TO COMPLY WITH IS EN 14398

MIN. 600

675mm MAX. TO FIRST STEP

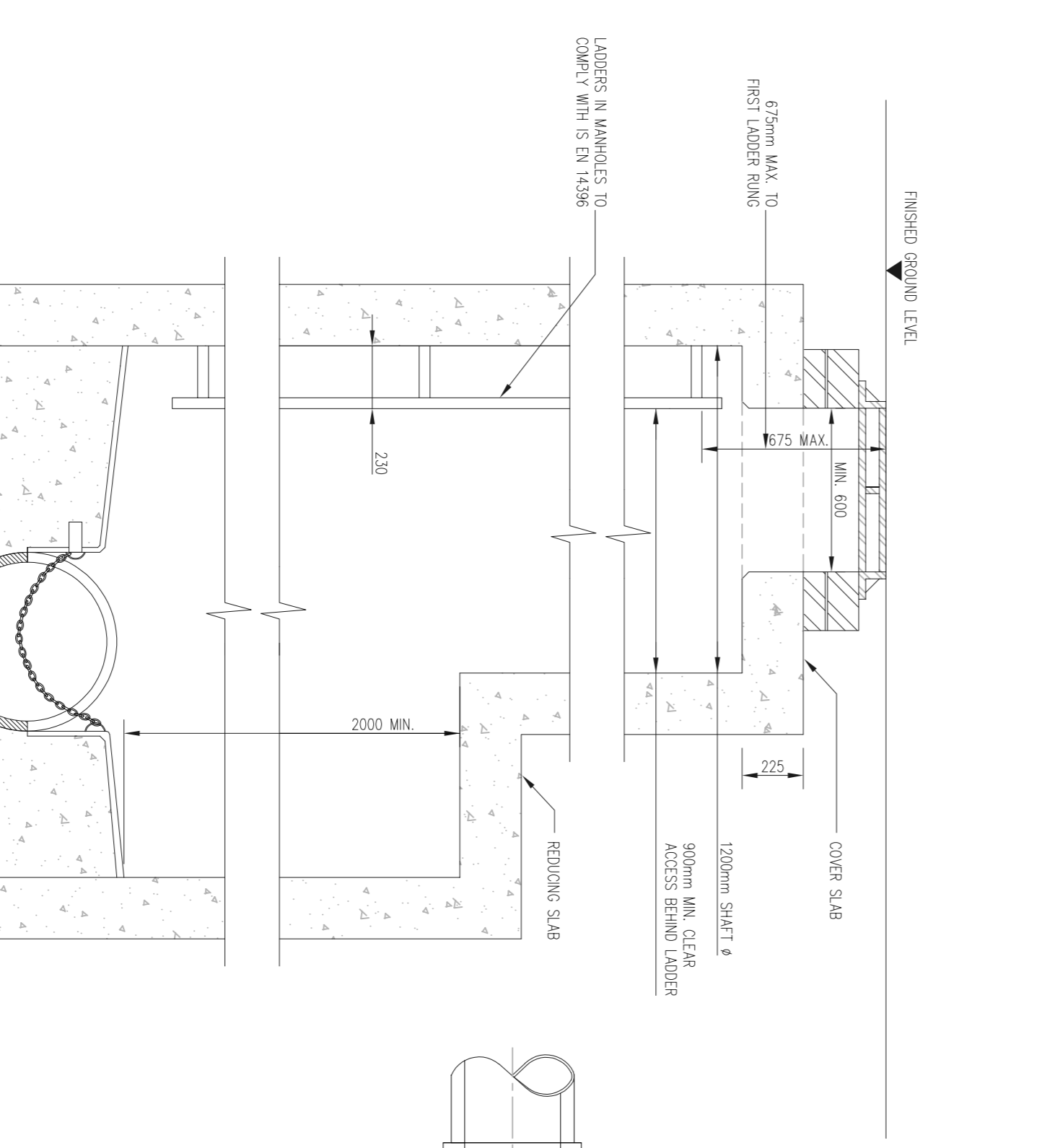
25 x 25mm CHAMFER

120

300 C/C'S

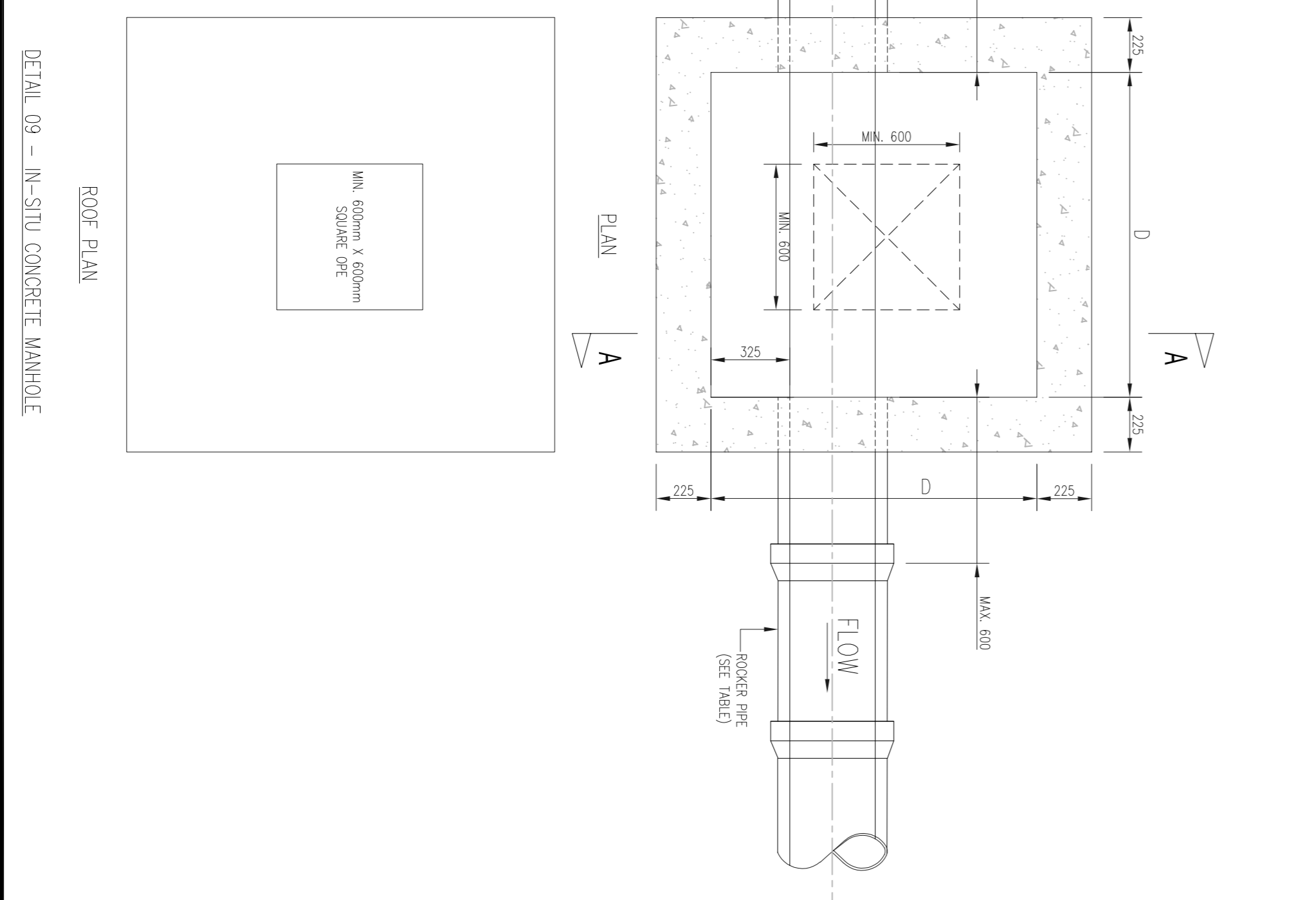
CONCRETE GRADE C50/77 IN ROOF, WALL AND BASE

STAINLESS STEEL CHAIN IN "WORK" POSITION SECURED TO RESTRAINING HOOK, WHEN CHAMBER IS OCCUPIED WITH 75mm Ø FRAME



MANHOLE DETAIL > 3m & < 6m  
GROUND TO PIPE SOFFIT DEPTH  
(NOTE: ON MANHOLES 450mm SHIRT DIMENSION, REDUCING SLAB NOT TO BE USED & SHIRT TO CONTINUE UP TO COVER SLAB)

ROCKER PIPE LENGTH		MINIMUM MANHOLE DIMENSIONS "D"	
PIPE DIAMETER (mm)	ROCKER PIPE LENGTH (mm)	DIAMETER OF LARGEST PIPE IN MANHOLE (mm)	INTERNAL DIMENSION OF MANHOLE (mm)
150 - 600	600	< 375	1200
> 600 - 750	1000	375 - 450	1350
> 750	1250	500 - 750	1500



DETAIL 09 - IN-SITU CONCRETE MANHOLE

PROJECT No.	20D018
DRAWING No.	05
REVISION	P
SCALE	AS SHOWN
DATE	20.04.21
DESIGNED BY	DW
CHECKED BY	LM
APPROVED BY	DH

CLIENT: AAI PALMERSTOWN LIMITED

PROJECT NAME: APARTMENT'S AT TINTINS 64 & 65 CHERRY ORCHARD INDUSTRIAL ESTATE

DRAWING NAME: IRISH WATER FOUL & SURFACE DRAINAGE DETAILS SHEET 3 OF 4

ISSUED BY: ISSUED FOR PLANNING

DATE: 20.04.21

SCALE: AS SHOWN

PROJECT No. 20D018

DRAWING No. 05

REVISION P

SCALE AS SHOWN

DATE 20.04.21

DESIGNED BY DW

CHECKED BY LM

APPROVED BY DH

CLIENT AAI PALMERSTOWN LIMITED

PROJECT NAME APARTMENT'S AT TINTINS 64 & 65 CHERRY ORCHARD INDUSTRIAL ESTATE

DRAWING NAME IRISH WATER FOUL & SURFACE DRAINAGE DETAILS SHEET 3 OF 4

ISSUED BY ISSUED FOR PLANNING

DATE 20.04.21

SCALE AS SHOWN

DESIGNED BY DW

CHECKED BY LM

APPROVED BY DH

**HAYES HIGGINS PARTNERSHIP**

The Glass House, 11 Coke Lane  
Smithfield, Dublin 7. Tel: 01 6612321  
E-mail: admin@hayeshiggins.ie

Our House Lane, Kildenny, Tel: (056) 7764710  
Email: info@hh.ie