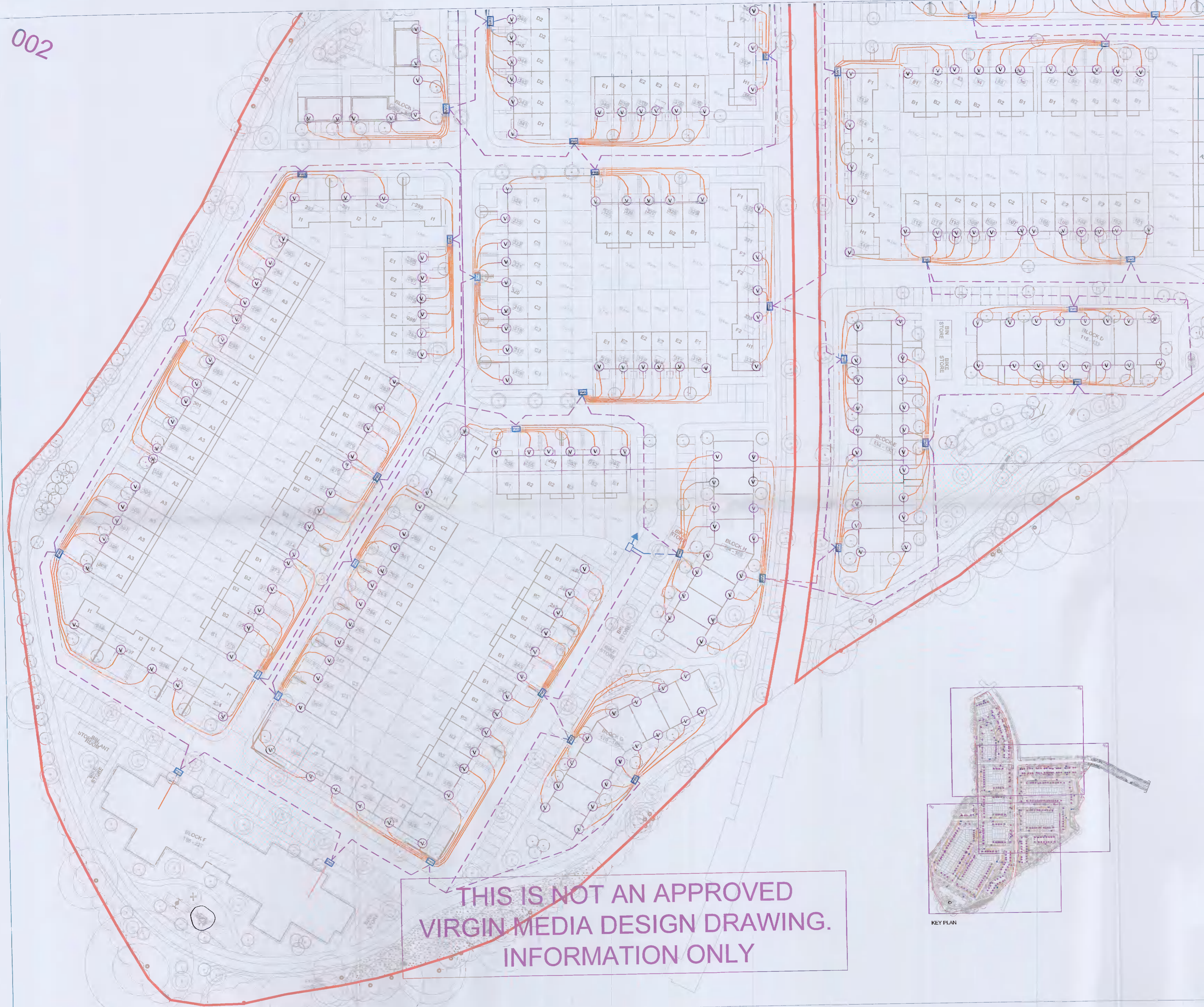


002



THIS DRAWING IS COPYRIGHT © ALL RIGHTS RESERVED. NO PART OF THIS DRAWING MAY BE REPRODUCED, STORED IN A RETRIEVAL SYSTEM OR TRANSMITTED IN ANY FORM OR BY ANY MEANS WITHOUT THE PRIOR WRITTEN PERMISSION FROM McELLIOTT CONSULTING ENGINEERS LIMITED

NOTES

01. DO NOT SCALE. USE FIGURED DIMENSIONS ONLY.
02. THIS DRAWING IS TO BE READ IN CONJUNCTION WITH ALL OTHER RELEVANT ARCHITECTURAL AND ENGINEERING DRAWINGS
03. APPROXIMATE LOCATION OF EXISTING SITE BOUNDARY VIRGIN MEDIA CHAMBER
04. VIRGIN MEDIA SUPPLY ALL OF THE EQUIPMENT NEEDED FOR THE INSTALLATION OF VIRGIN MEDIA NETWORK - DUCT, CHAMBER COVERS, CABINETS, ETUS, TAP ENCLOSURES, OUTLET BOXES, INTERNAL "TRIPLE SCREENED" COAX CABLE.
05. THIS PROPOSAL IS SUBJECT TO APPROVAL FROM THE LOCAL AUTHORITY & PLANNING PERMISSION
06. TO BE READ IN CONJUNCTION WITH VIRGIN MEDIA FINAL DESIGN DRAWING.
07. THE CONTRACTOR PROCEEDS AT THEIR OWN RISK WHEN INSTALLING VIRGIN MEDIA DUCTING PRIOR TO THE APPROVED VM DESIGN DRAWING BEING ISSUED.

LEGEND

- TWIN WALLED Ø110mm GREEN DUCT ON FOOTWAY TO VIRGIN MEDIA SPEC
- Ø32mm HYDRODARE TO EACH HOUSE ETU TO VIRGIN MEDIA SPEC.
- INGROUND FOOTWAY CHAMBER TO VIRGIN MEDIA SPEC (FW3 TYPE).
- NODE 4 VIRGIN MEDIA CABINET 1015mm(H) x 450mm(W) x 410mm(D)
- VIRGIN MEDIA ETU CABINET - 300 (h) x 220 (w) x 175mm DEEP

B	FOR INFORMATION	RT	TMC	TMC	10/12/2021
A	FOR INFORMATION	RT	TMC	TMC	27/08/2021
ISSUE	DESCRIPTION	DRN	ORIG	APP	DATE

McElligott

CONSULTING ENGINEERS
H2a Centrepoint Business Park, Oak Road, Dublin 12
tel: +353 (0)1 424 3014 email: info@mcelligott.ie web: www.mcelligott.ie

CLIENT
HUGH MCGREEVY & SONS

PROJECT
TUBBER LANE 3

TITLE
PHASE 3
VIRGIN MEDIA SERVICES LAYOUT

SHEET	SCALE	PROJECT No.	DRAWING No.
A1	1:500	21039	E010

THIS IS NOT AN APPROVED
VIRGIN MEDIA DESIGN DRAWING.
INFORMATION ONLY

