

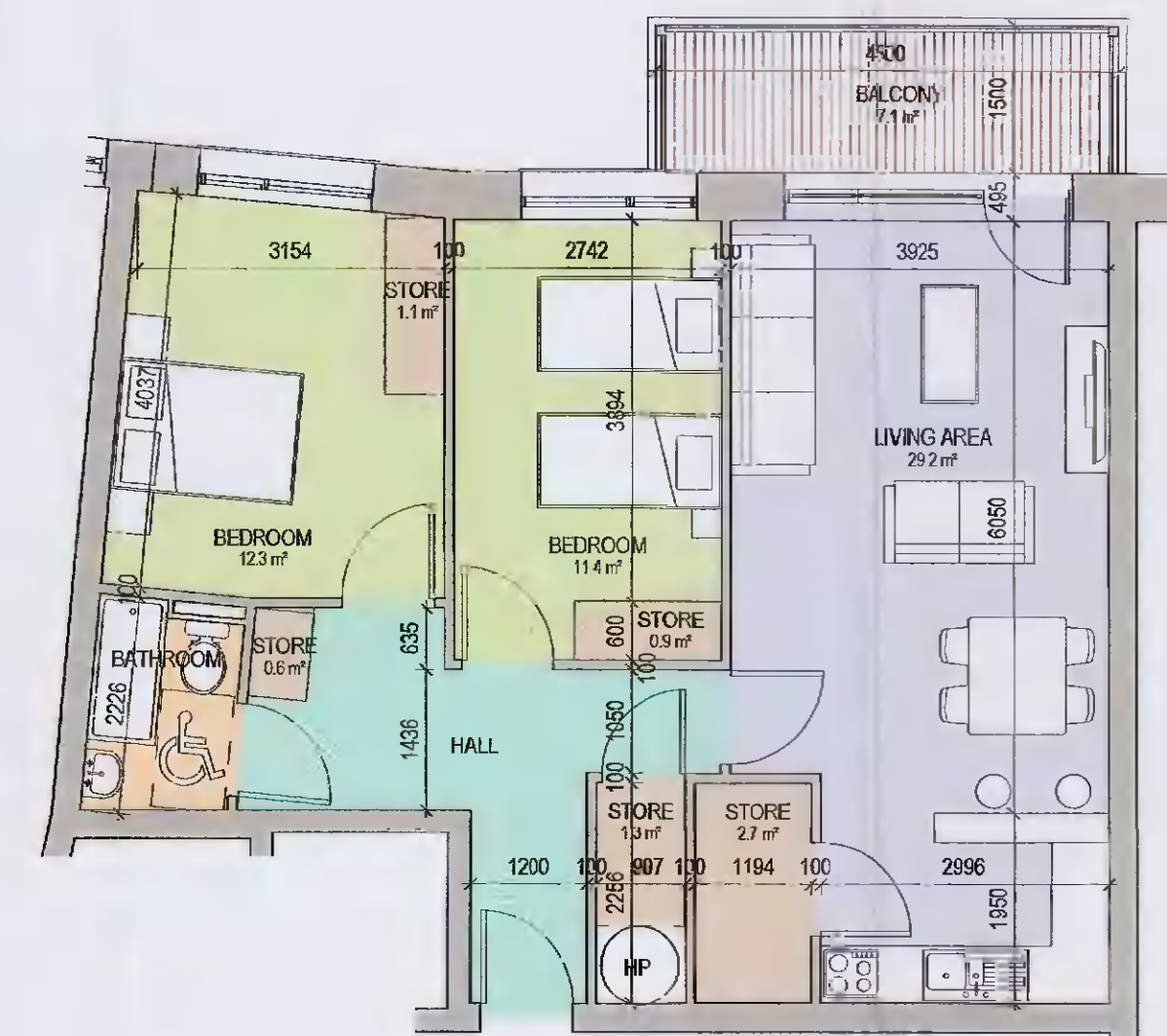
T4 - BLOCKS 2&3 2-BED UNIT
1:75 80.0 sqm



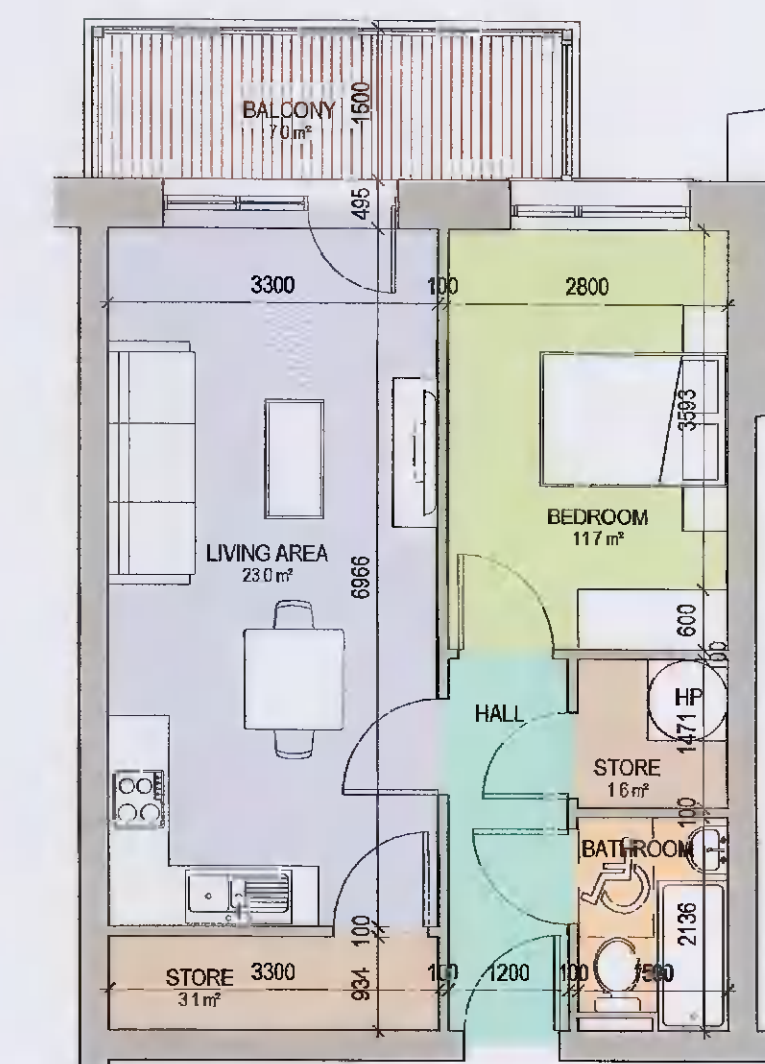
T5 - BLOCKS 2&3 2-BED UNIT
1:75 80.0 sqm



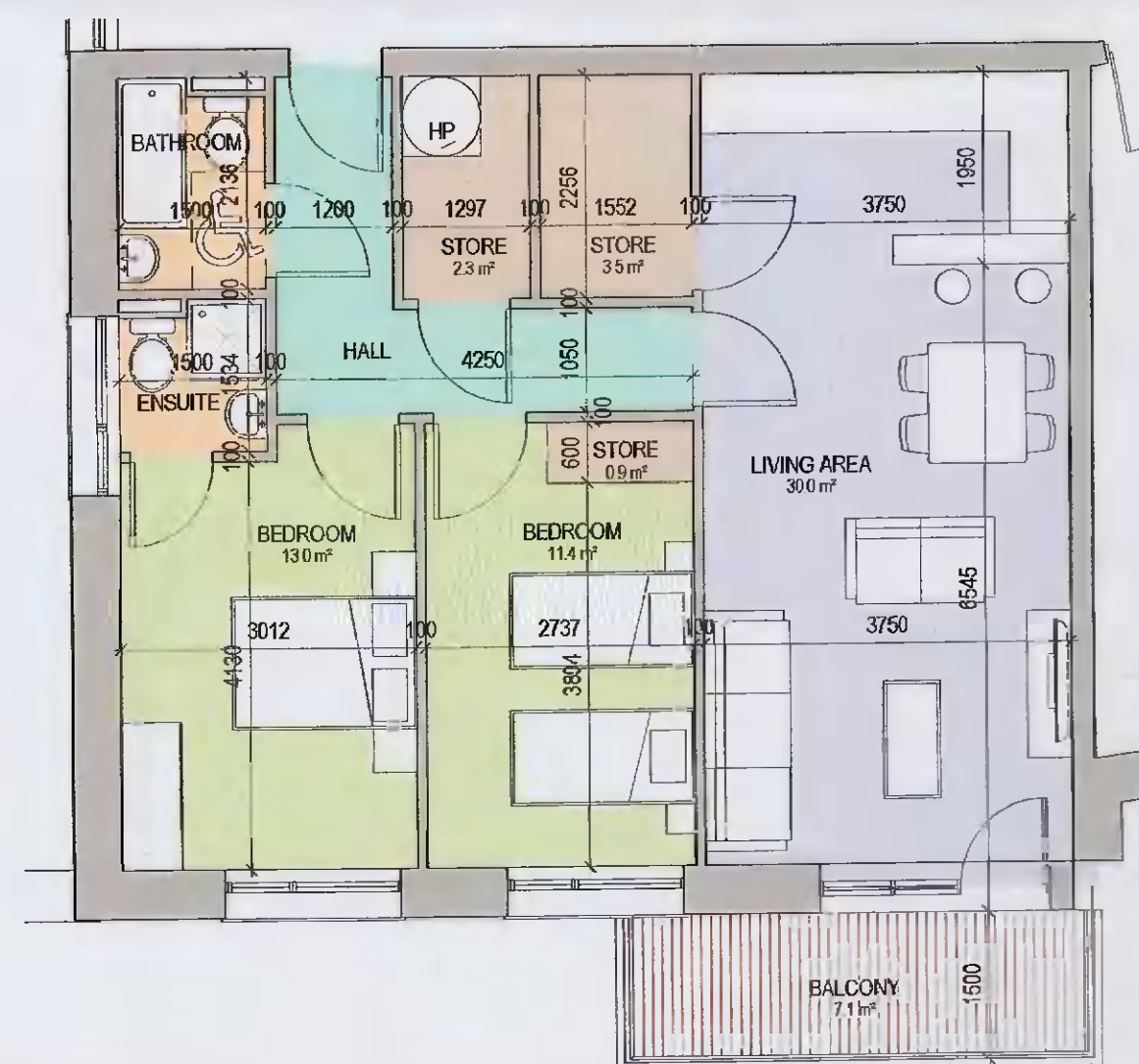
T6 - BLOCKS 2&3 2-BED UNIT
1:75 77.4 sqm



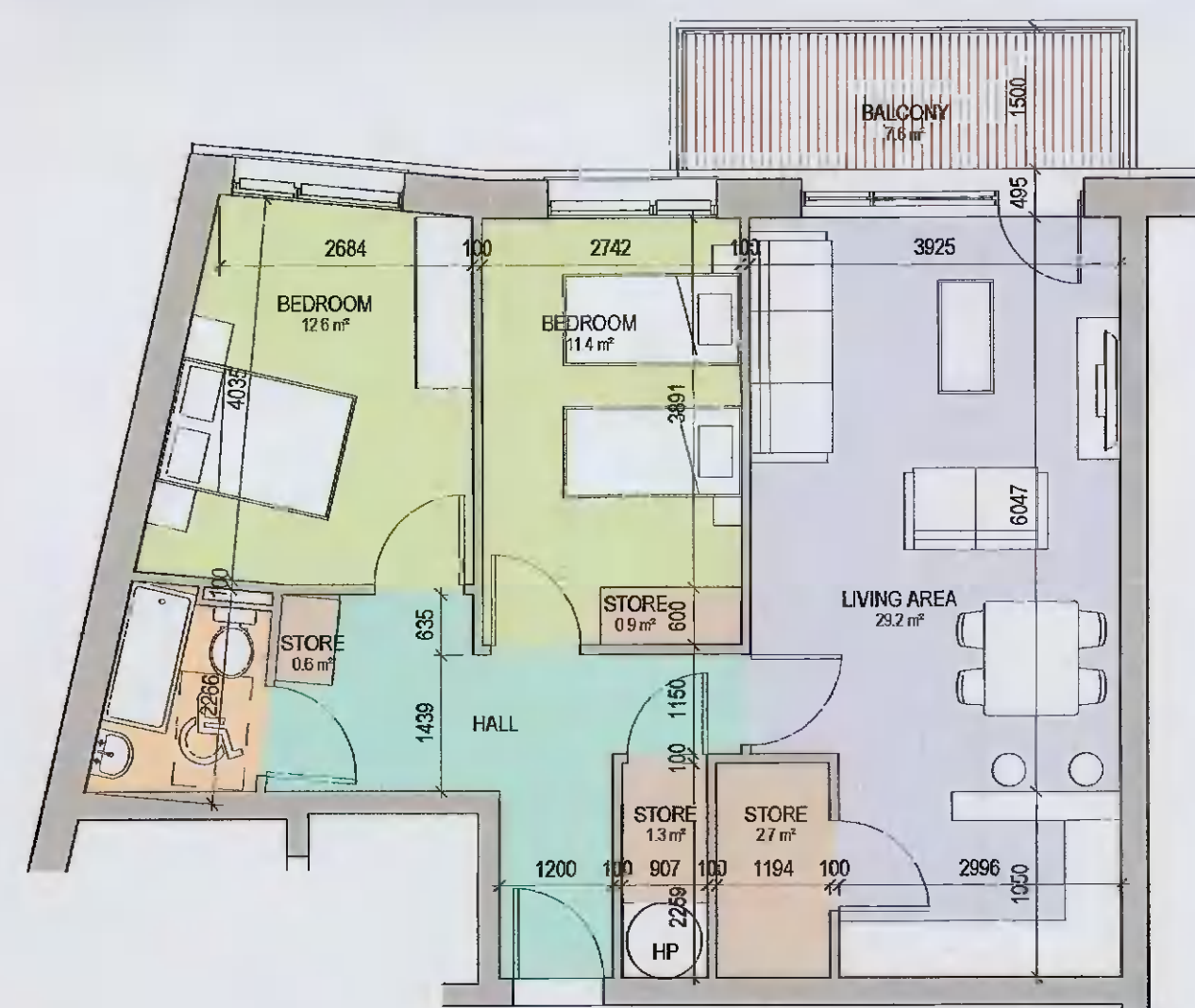
T7 - BLOCKS 2&3 2-BED UNIT
1:75 75.8 sqm



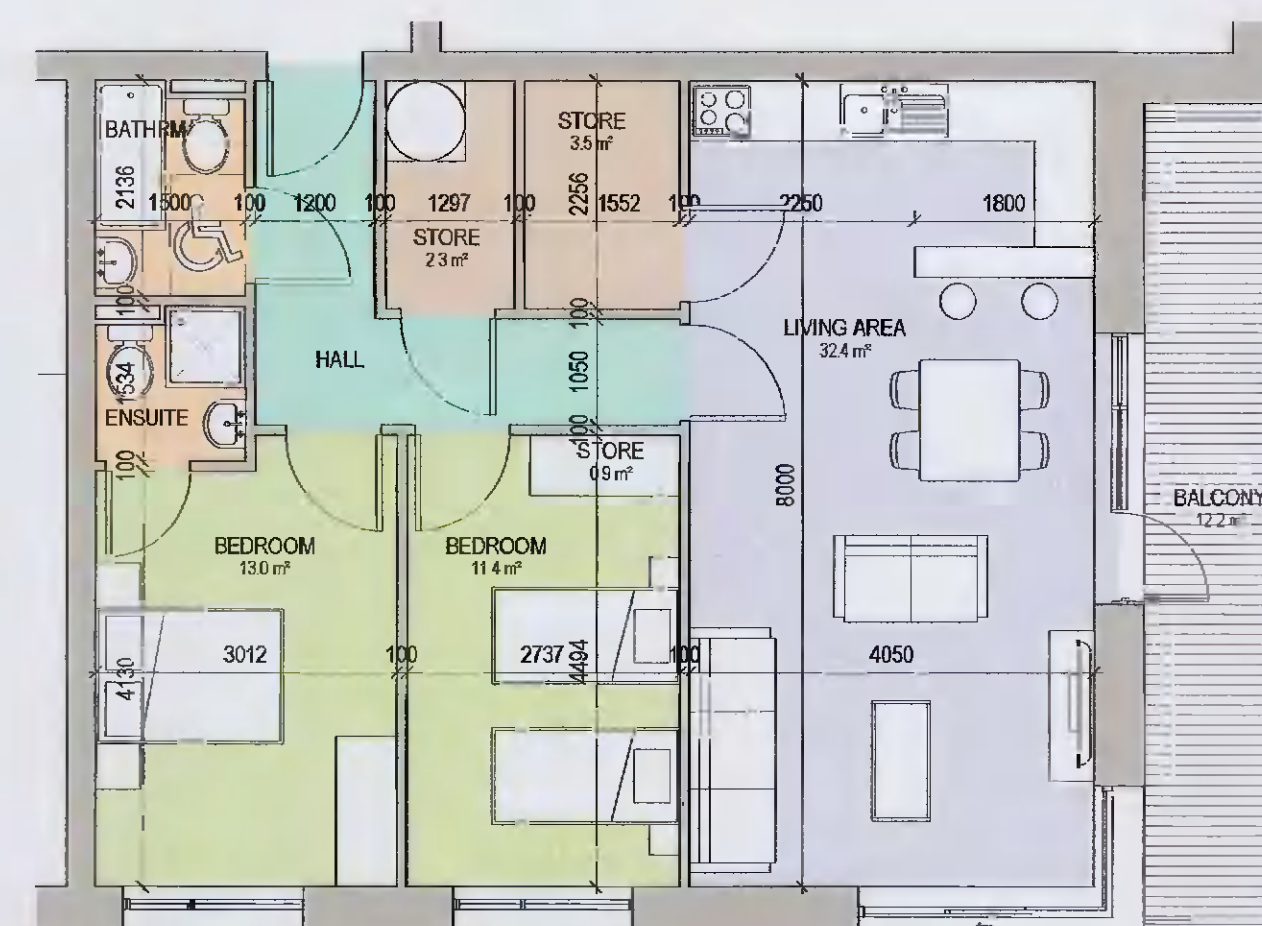
T8 - BLOCKS 2&3 1-BED UNIT
1:75 49.6 sqm



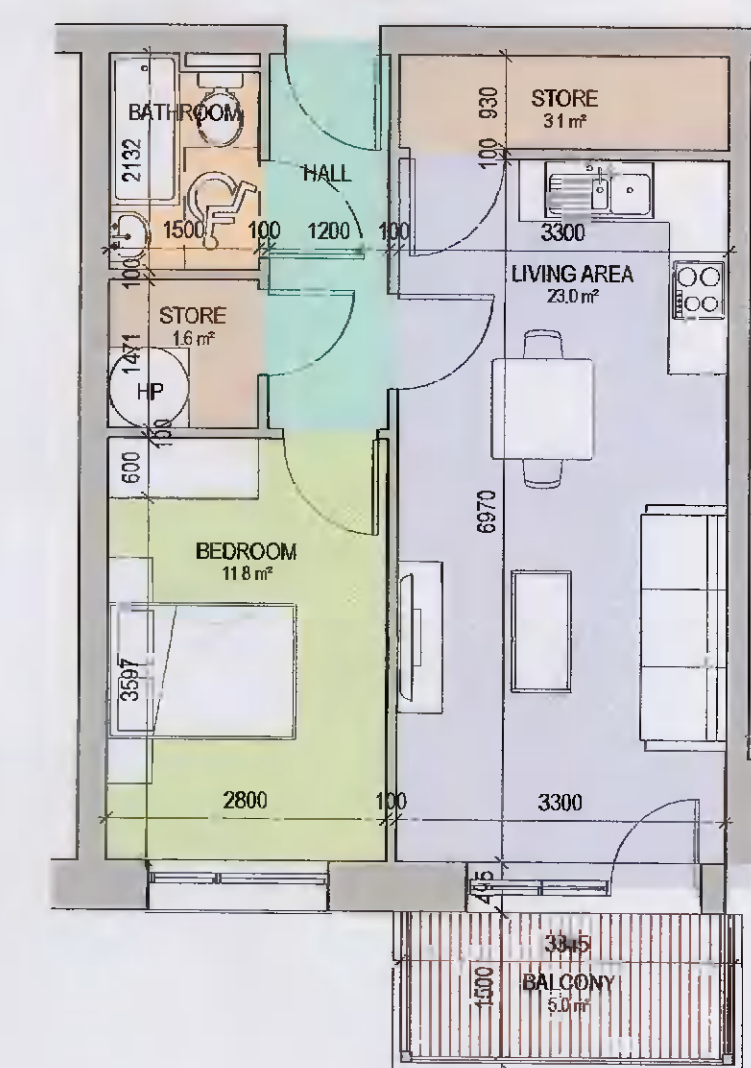
T9 - BLOCKS 2&3 2-BED UNIT
1:75 77.6 sqm



T10 - BLOCKS 2&3 2-BED UNIT
1:75 75.6 sqm



T11 - BLOCKS 2&3 2-BED UNIT
1:75 80.0 sqm



T12 - BLOCKS 2&3 1-BED UNIT
1:75 49.6 sqm

PLANNING PERMISSION

oppermann associates		ARCHITECTS & INTERIOR DESIGNERS Unit D1, The Millhouse, The Steepleworks, Foley Street, Dublin 1. Tel: (01) 8698800 Fax: (01) 8698699 email: architecture@oppermann.ie	
CLIENT	JACKIE GREEN CONSTRUCTION	DRAWN BY	ZE
PROJECT	20772 - RESIDENTIAL DEVELOPMENT AT HAYDEN'S LANE, LUCAN	CHECKED BY	SOS
DRAWING	PROPOSED BLOCKS 2 & 3 UNIT TYPES	SCALE	1 : 75 @ A1
DRAWING NO	20772-OPP-00-ZZ-DR-A-109-PP-P01	PLOT DATE	17.11.2021
Copyright © 2020 Oppermann Associates All Rights Reserved. Figures and dimensions only to be taken from this drawing. All dimensions to be checked on site. Architects to be informed immediately of any discrepancies before work proceeds.			

REVISION	DATE	REVISOR	DESCRIPTION
P01	2021.12.17	SOS	Issued for Planning Permission