



EXISTING SKYLIGHT

EXISTING H3G TFL SINGLE BAY CABINET

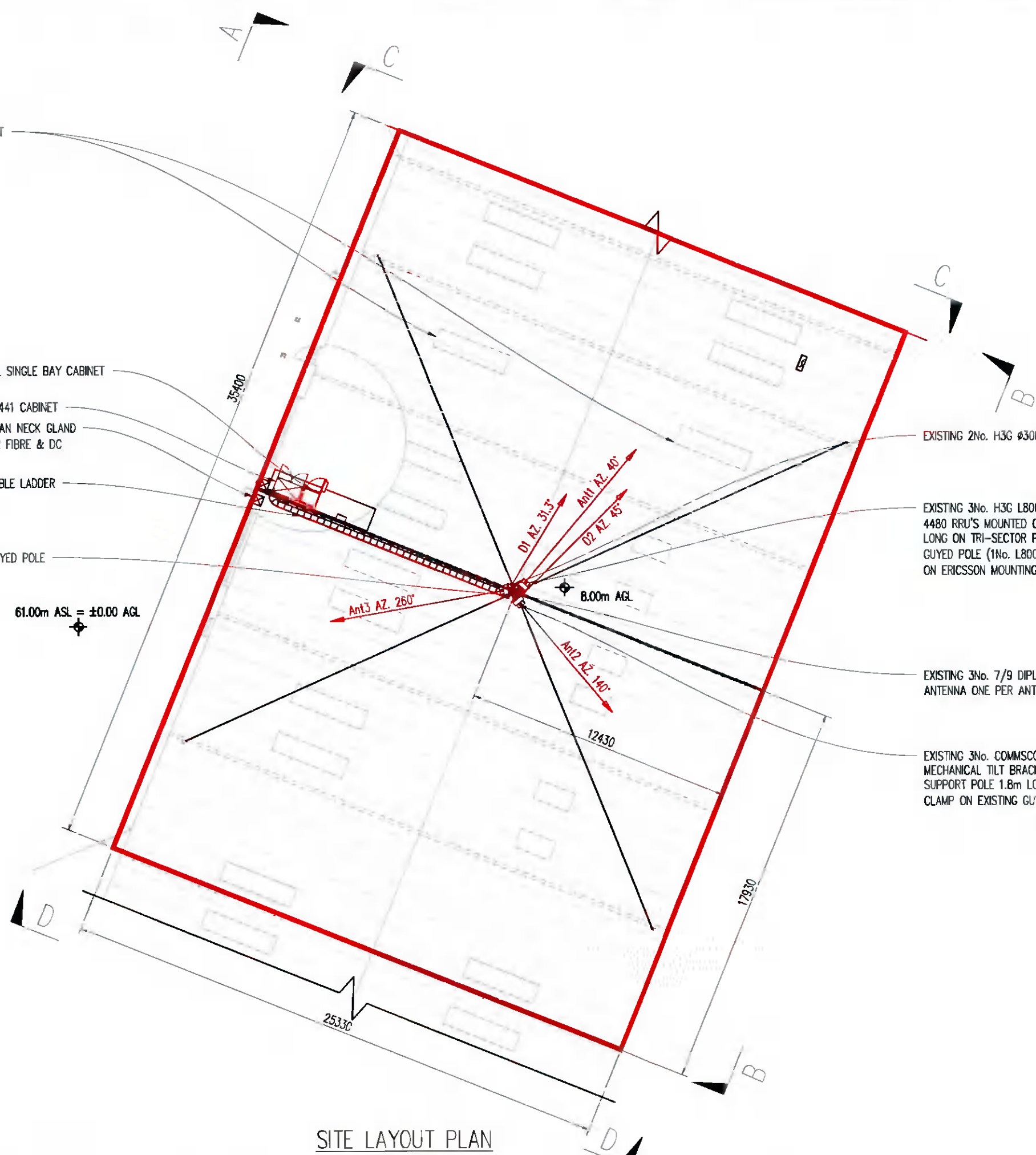
EXISTING H3G NB441 CABINET

EXISTING H3G SWAN NECK GLAND  
C/W ROXTEC FOR FIBRE & DC  
CABLES

EXISTING H3G CABLE LADDER

EXISTING 12m GUYED POLE

61.00m ASL = ±0.00 AGL



EXISTING 2No. H3G #300 DISHES (D1 & D2)

EXISTING 3No. H3G L800 2460 RRU'S & 3No. H3G L1800  
4480 RRU'S MOUNTED ON 3No. Ø76 SUPPORT POLE 0.8m  
LONG ON TRI-SECTOR POLE COLLAR CLAMP ON EXISTING  
GUYED POLE (1No. L800 & L1800 RRU PER SUPPORT POLE  
ON ERICSSON MOUNTING RAIL)

EXISTING 3No. 7/9 DIPLEXERS MOUNTED BEHIND  
ANTENNA ONE PER ANTENNA

EXISTING 3No. COMMSCOPE RRV4-65A-R6 1.5m LONG C/W  
MECHANICAL TILT BRACKETS MOUNTED ON 3No. Ø76  
SUPPORT POLE 1.8m LONG ON TRI-SECTOR POLE COLLAR  
CLAMP ON EXISTING GUYED POLE (Ant1, Ant2 & Ant3)

SITE LAYOUT PLAN  
SCALE 1:200

SCHEDULE OF RT DISHES					
DISH I.D.	HEIGHT	BEARING	DISH DIA.	FAR END LINK	STATUS
D1	18850	31°	300	DU0167 ESB Ballycath	EXISTING
D2	18850	45°	300	DU1084 Lucon Clonon	EXISTING
D3					

SCHEDULE OF SECTOR ANTENNAS			FEEDERS	
AERIAL I.D.	HEIGHT	BEARING	ANTENNA TYPE	STATUS
Ant1	20100	40°	COMMSCOPE RRV4-65A-R6	EXISTING
Ant2	20100	140°	COMMSCOPE RRV4-65A-R6	EXISTING
Ant3	20100	260°	COMMSCOPE RRV4-65A-R6	EXISTING

PLANNING RETENTION		2012.21	JK	JK
No.	Revision	Date	By	Ckd



Three Ireland (Hutchison) Ltd.  
28/29 Sir John Rogerson's Quay,  
Dublin 2, Ireland  
Ireland



**PLANNING RETENTION**

Mosaic Site No.	MDN1143
Original No. Host	DU0194
Original No. Guest 1	-
Original No. Guest 2	-
Host Operator	H3G
Site Name	BAILEY HOUSE, FONTHILL BUSINESS PARK, CLONDALKIN, Co. DUBLIN 22
Title	MOBILE TELECOMMUNICATIONS INSTALLATION SITE LAYOUT PLAN
Designed SOB	Date 2012.2021
Drawn JK	Scale AS SHOWN Rev. -
Dwg No. DU0194-P04	