



- Street Trees**  
Link Streets: 20-25cm girth  
*Tilia cordata* 'Greenspire', *Platanus orientalis* 'Minaret'
- Local Streets: 16-18cm girth  
*Alnus glutinosa*, *Betula pubescens*, *Carpinus betulus*, *Acer camp.* 'Elegant'
- Small Residential Streets/Homezones: 14-16cm girth  
*Corylus avellana*, *Prunus 'Umineko'*, *Pyrus 'Chanticleer'*, *Magnolia kobus*
- Open Space Trees**  
Parkland Trees: 12-14cm - 14-16cm girth  
*Acer campestre*, *Alnus glutinosa*, *Betula pendula*, *Fagus sylvatica* 'Pendula', *Pinus sylvestris*, *Prunus avium*, *Prunus padus*, *Sorbus aria*, *Sorbus aucuparia*, *Quercus robur*, *Betula nigra*, *Crataegus spp.*, *Malus 'Rudolph'*, *Salix alba* 'Tristis', *Ulmus 'Loeber'*, *Sorbus aucuparia*, *Corylus avellana*, *Castanea sativa*, *Juglans nigra*
- Urban Edge: 16-18cm girth  
*Acer campestre* 'Elegant', *Tilia cordata* 'Greenspire', *Ulmus 'Loeber'*, *Betula pubescens*
- Communal Open Space/Apt/Duplex Trees**  
Standard Trees: 14-16cm girth  
*Betula pendula*, *Prunus avium*, *Malus 'Evereste'*  
Multi-stemmed feature trees  
- 3-3.5m height, min 3 breaks from base  
*Amelanchier lamarckii*, *Betula utilis* 'Jaquemontii', *Liquidambar styraciflua*
- Rear Garden Trees**  
8-10 cm girth  
*Betula pendula*, *Prunus avium*, *Malus 'Evereste'*
- Native Woodland Planting**  
B/R 60-120cm (90%) & 8-10cm girth (10%), @ 1 per m<sup>2</sup> to include the following species:  
*Alnus glutinosa*, *Betula pendula*, *Betula pubescens*, *Crataegus monogyna*, *Malus sylvestris*, *Quercus robur*, *Prunus avium*, *Acer campestre*, *Prunus spinosa*, *Salix spp.*, *Prunus padus*, *Corylus avellana*, *Pinus sylvestris*

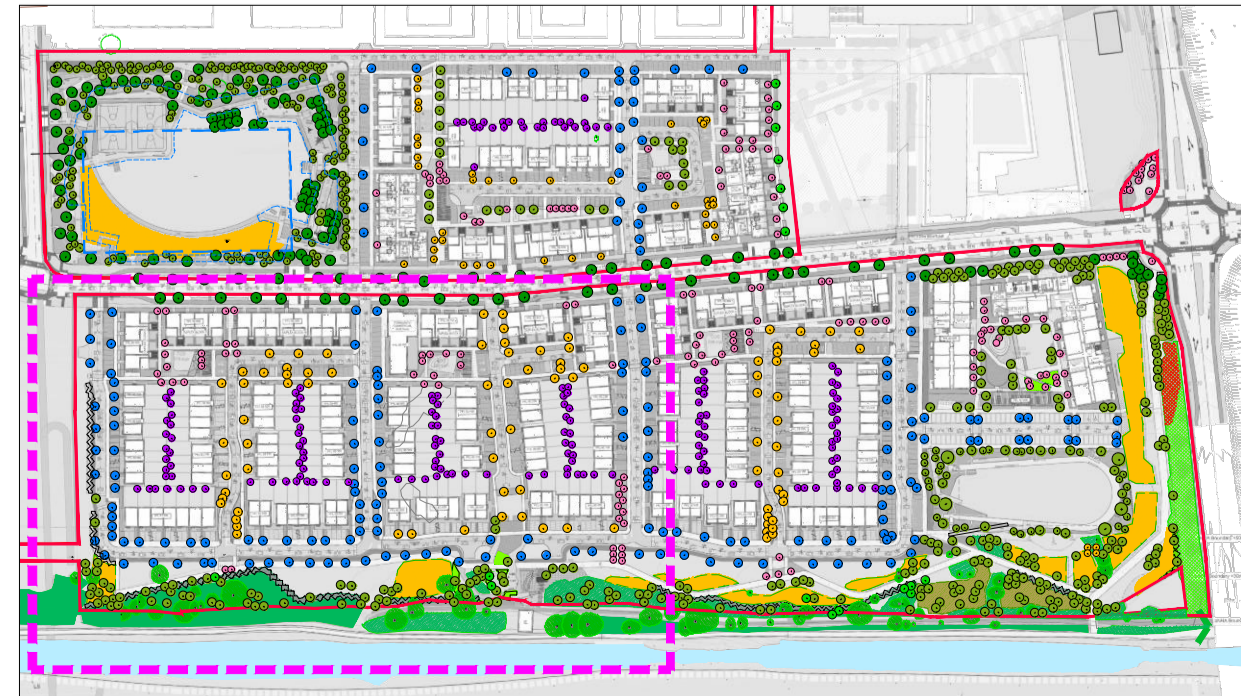
- Street/Public Realm Planting**  
- Container-Grown Shrubs 2ltr min @ 5 per m<sup>2</sup>. To include the following:  
*Lavandula 'Hidcote'*, *Hydrangea sp.*, *Sarcococca sp.*, *Polystichum sp.*, *Dryopteris sp.*, *Erica sp.*, *Luzula sp.*, *Carex oshimensis* 'Evergold', *Hypericum 'Hidcote'*, *Mahonia aquifolium*, *Rosmarinus officinalis*, *Lonicera pileata*, *Vinca minor*, *Viburnum davidii*, *Hedera helix*, *Viburnum opulus*, *Ajuga reptans*, *Liriope muscari*, *Lonicera periclymenum*, *Molinia caerulea*, *Hebebois niger*, *Heuchera maxima*, *Libertia formosa*
- Planting Species:**  
*Prunus lusitanica*, *Buxus sempervirens*, *Native privet*
- Open Space Planting (within Canal Park)**  
- Container-Grown Shrubs 2ltr min @ 4 per m<sup>2</sup>. To include the following species:  
*Sarcococca humilis*, *Hypericum 'Hidcote'*, *Mahonia aquifolium*, *Rosmarinus officinalis*, *Viburnum davidii*, *Viburnum opulus*, *Salix aurita*, *Salix caprea*, *Rosa canina*, *Rosa pimpinellifolia*, *Euonymus europaeus*. To include species and varieties within the All-Ireland Pollinator Plan.
- Front Garden Planting**  
- 75% Shrub, 25% Perennial, @ 5 per m<sup>2</sup>. Container Grown, 2ltr  
Low maintenance planting to include species from the above list of shrubs.
- Residential Hedge Planting**  
- R/B, min 60-80cm height  
*Ilex aquifolium*, *Prunus lusitanica*
- Open Space Native Hedge**  
Double-staggered, Bare-root, 60-120cm  
To include: *Crataegus monogyna*, *Corylus avellana*, *Euonymus europaeus*, *Ilex aquifolium*, *Lonicera periclymenum*, *Viburnum opulus*, *Ilex spp.*, *Prunus avium*, *Prunus spinosa*, *Rosa canina*.
- Garden/Amenity Lawn**  
Coburns Utility Play Grass Seed Mix or similar and approved  
200mm topsoil depth
- Planted Swale** - to include the following species:  
*Filipendula vulgaris*, *Luzula sylvatica*, *Polystichum setiferum*, *Deschampsia cespitosa*, *Juncus effusus*, *Primula vulgaris*, *Molinia caerulea*
- Native Meadow Grass**  
Native Species in consultation with Project Ecologist

- Asphalt Roadway**  
with in-situ concrete kerbs (to Engineer's specification)
- Public Footpaths**  
In-situ concrete, Brushed Finish (to Engineer's specification)
- Public Footpaths/Seating Spaces - Apartments**  
PC Concrete Block
- Footpaths - Open Space**  
Compacted Gravel Path
- Side Paths - Rear Gardens**  
In-situ concrete, Brushed Finish (to Engineer's specification)
- Cycleway**  
Coloured Asphalt
- Car Parking Spaces - off curtilage**  
Permeable PC Concrete Block
- Car Parking Spaces - on curtilage**  
Permeable PC Concrete Block
- HomeZone & Raised Table**  
Coloured Asphalt
- Paving - Entrance to Houses**  
Permeable PC Concrete Paving Blocks
- Paving - Rear Garden terraces**  
Permeable PC Concrete Paving Flags

- Play Area Surface**  
Grass Safety Matting & Bark mulch suitable for play areas
- Reinforced Grass surfacing to Fire Tender Route**
- Compacted Gravel**  
- to seating spaces in open spaces  
- Buff colour, 10mm and down
- Retaining Walls/Raised Planters (+450mm - 600mm)**  
Rendered Concrete Block with PC Concrete Coping
- Seating**  
Simple, robust street furniture with arm and backrests  
- Galvanised Steel frame, Composite Timber Seating
- Outdoor Bicycle Stands**  
Standard Sheffield Bicycle Stands or similar and approved
- Below Ground Attenuation Tank**  
See Engineer's drawings for more information.
- Attenuation Basin**  
- Top & Bottom of proposed slope
- Site Boundary**
- Wayleaves - Gas & Water**

- Boundary between Residential and Public Realm**  
Rendered Concrete Block Wall with PC concrete coping & Brick Piers  
+2.0m high
- Rear Garden Boundary**  
Timber Panel with Concrete Post  
+1.8m high
- Apartment Courtyard Railing**  
Steel Bar Railing, Powder-coated, Colour: Black  
+1.8m high
- Residential Hedge Planting**  
800mm width  
- R/B, min 60-80cm height  
- *Ilex aquifolium*, *Prunus lusitanica*

**NOTES:**  
1. This drawing is intended to show landscape architectural proposals only. Please refer to Architects and Engineers drawings for relevant details of buildings, structures, roads, parking, etc.  
2. The copyright of this drawing is vested with Murray & Associates. This drawing may not be copied or reproduced without written consent.  
3. All materials referred to on this drawing - including plant species - are indicative and subject to change following detailed site investigation. Significant changes, if any are required, will be referred to the relevant authority for agreement.  
4. This drawing is not suitable for use for construction purposes.  
5. Discrepancies to be referred to Murray & Associates for clarification.



Rev	Date	Revision	Checked
D	11-11-21	Site Revisions	JB
C	21-10-21	Site Revisions	JB
B	15-10-21	Site Revisions	JB
A	13-09-21	Site Revisions	JB
0	13-07-21	Original	JB

**murray & associates**  
landscape architecture

**Project Title:** Clonburris Phase 1A

**Client:** Cairn Homes Properties Ltd

**Sheet Title:** Landscape Site Plan 01

**Sheet No.:** 1738\_PL\_P\_04

**Project Architect:** MCORM

**Scale:** 1:500 @ A1  
**Date:** 17-11-21  
**Revision:** D