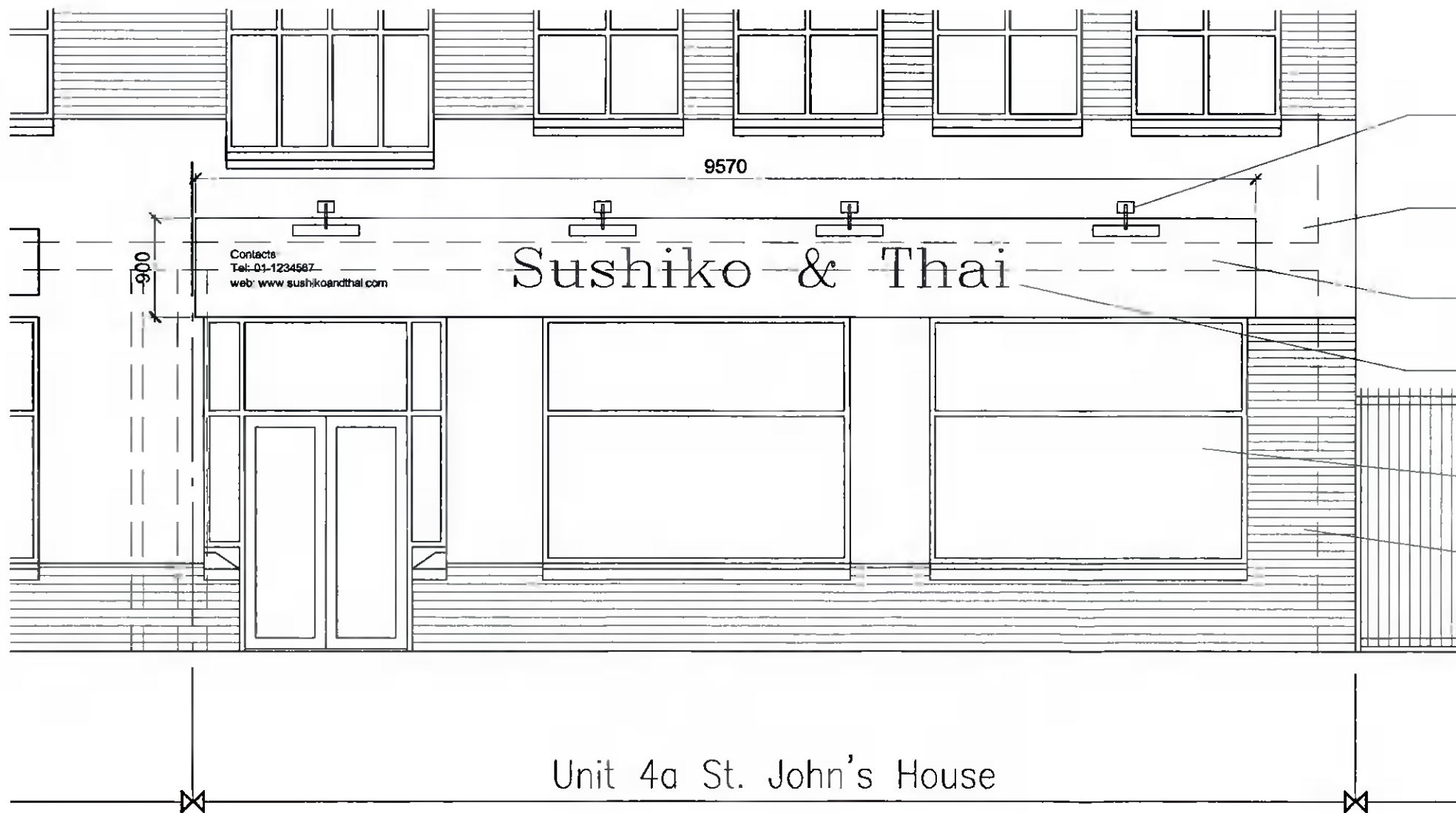


Notes:
 All drawings are the copyright of the consultants (NJA Planning Consultants) and may not be used in whole or in part without their expressed permission in writing.
 Do not scale from this drawing, use written dimensions only.
 All dimensions to be checked on site by the contractor and the consultant notified of any discrepancies.
 All levels indicated are approximate relative levels and do not relate to Ordnance Datum.
 All levels must be checked on site.
 All works to be carried out in accordance with the 1997 Building Regulations, with all subsequent revisions to same, and with the requirements of the relative Local Authority.



Contiguous Front/N.East Elevation
 SCALE: 1:200 @ A3



Unit 4a St. John's House

Front/N.East Elevation (Unit 4a)
 SCALE: 1:50 @ A3

- ALLOW FOR 4No. NEW (600mm WIDE X 100mm DEEP) BLACK, WALL MOUNTED OVERHANGING SHOPFRONT SIGNAGE LIGHTING FITTINGS (FINAL LIGHT FITTINGS TO BE SELECTED BY CLIENT/ARCHITECT)
- EXISTING (YELLOW) SAND CEMENT RENDER PLASTERWORK AROUND SHOPFRONT & PANELS BETWEEN WINDOWS TO FRONT ELEVATION TO BE REPAINTED TO SELECTED COLOUR (CREAM TO MATCH UNIT 4)
- EXISTING SHOPFRONT SIGNAGE / FRAMING (9.570m WIDE x 0.900m HIGH x 0.350m DEEP) ACROSS FRONT ELEVATION TO BE RETAINED, WITH NEW FRONT FACE TO BE REVISED WITH NEW TEXT AS SHOWN
- NEW SHOPFRONT SIGNAGE: BLACK BACKGROUND WITH WHITE & GOLD LETTERING AS SHOWN
- EXISTING DOUBLE GLAZED ALUMINIUM SHOPFRONT WINDOWS & ENTRANCE DOUBLE DOORS (RAL: 7016 ANTRICATE GREY), COMPLETE WITH STEEL SECURITY ROLLER SHUTTERS TO REMAIN UNCHANGED
- EXISTING BRICKWORK TO FRONT ELEVATION TO REMAIN UNCHANGED AS SHOWN

REVISION	MADE BY	DATE

13 BATTERFIELD CRESENT, BISHOPSCOURT, DUBLIN 14. TEL: 0861367 806. 087/0801710
Niall Jones & Associates
 Planning Consultants

JOB TITLE: PROPOSED NEW SUSHI TAKE AWAY & SHOP FITOUT AT UNIT 4A SAINT JOHN'S HOUSE, TALLAGHT, D.24 FOR WEI KEE LIMITED

DRAWING TITLE: PLANNING DRAWING: PROPOSED CONTIGUOUS FRONT/N.EAST ELEVATION

SCALE	DATE	DRAWN BY	CHECKED	JOB No.	DRAWING No.	REV.
1:100 @ A3 1: 50 @ A1	DEC '21	N.Jones	N.J.	21/273	P.07	