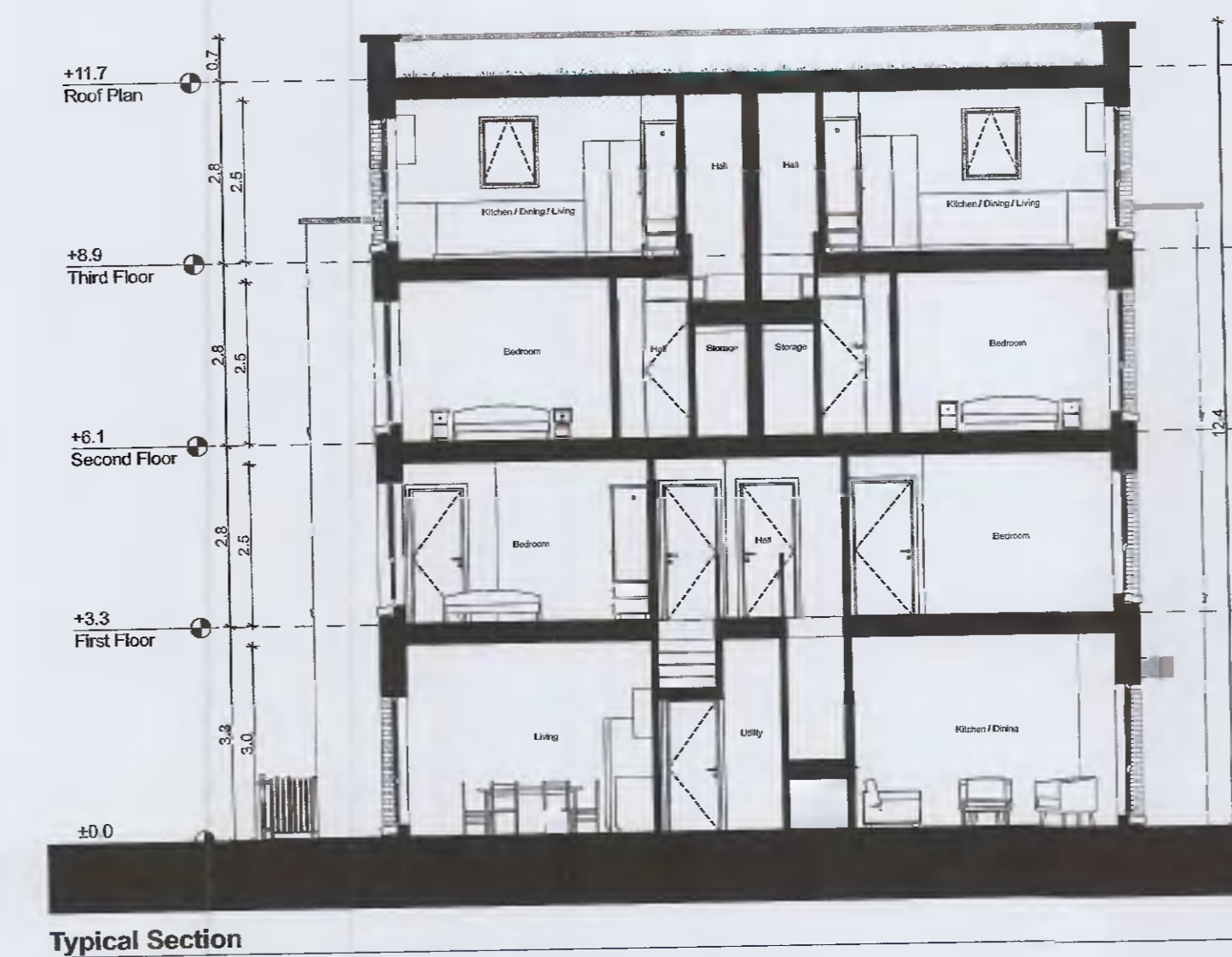
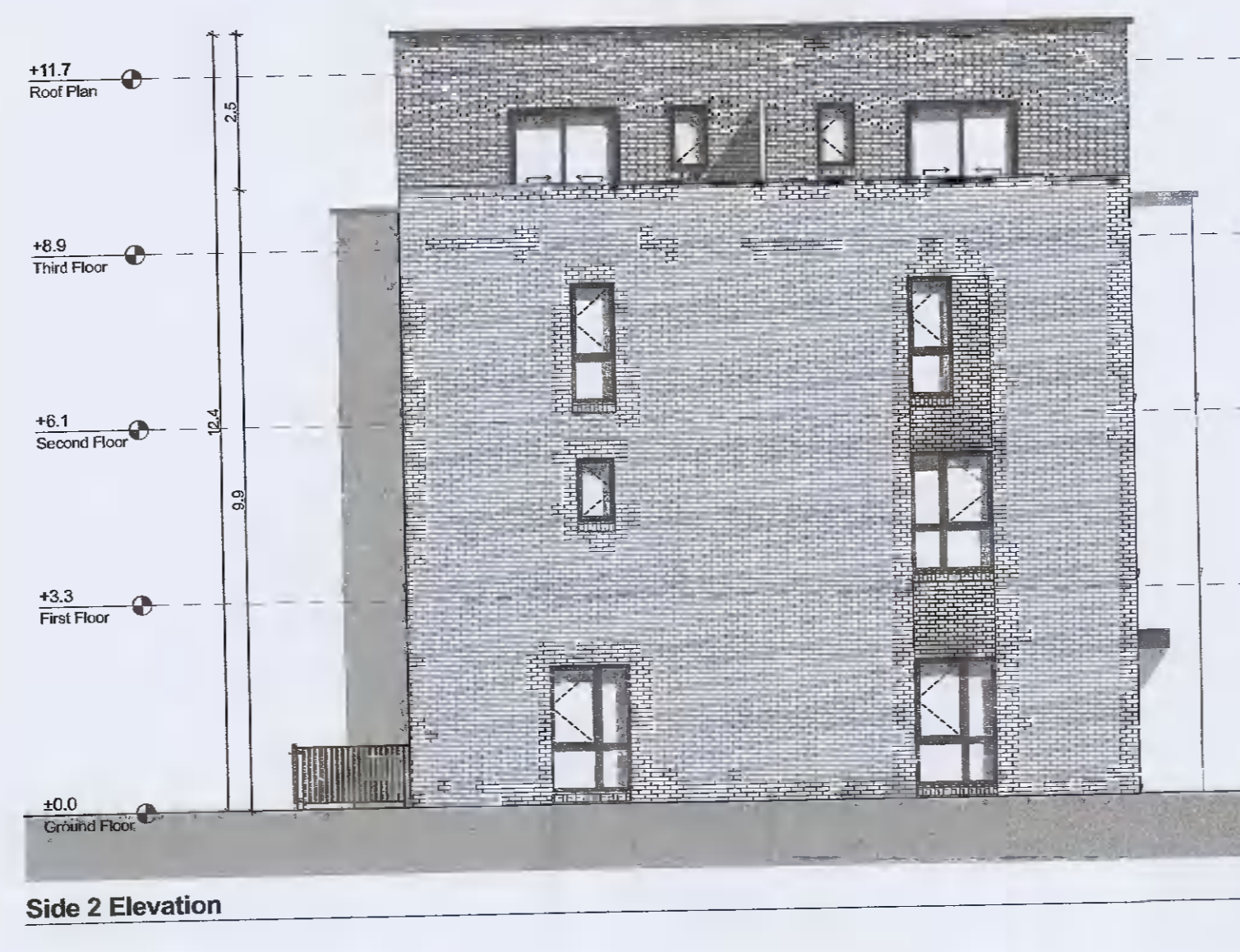
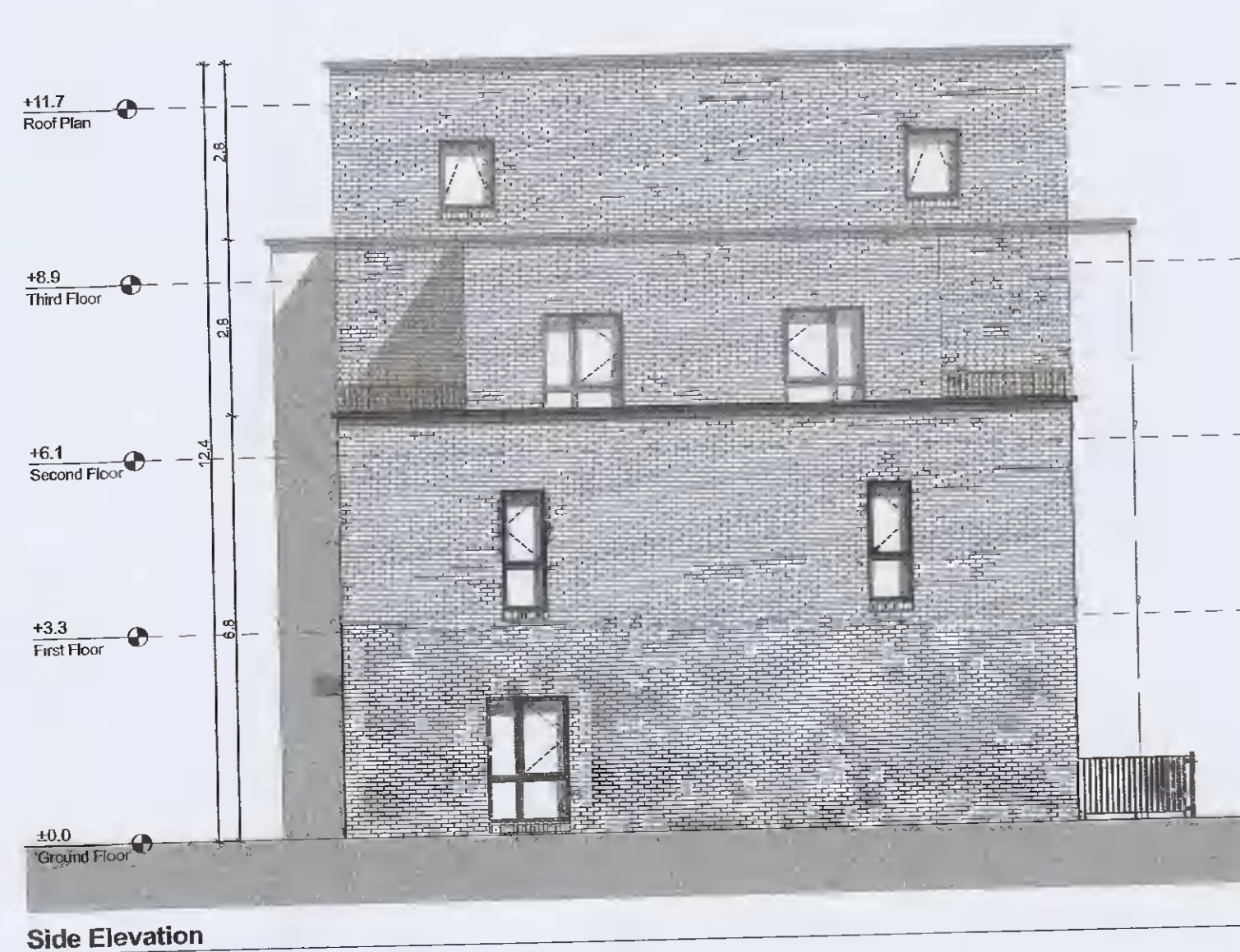


**APARTMENT BLOCK J**  
**9 no. two story apartment duplex + 2 no. one storey apartment**

Notes

Do not scale from this drawing.  
 Use figured dimensions only.  
 All errors and omissions to be reported to the Architect.  
 This drawing is to be read in conjunction with relevant consultant's drawings.  
 All dimensions are in millimetres and all levels are in meters to match Datums unless otherwise noted.

This drawing is for planning purposes only and not for construction.  
 This drawing or design may not be reproduced without permission.



NOTES ON FINISHES:	
ROOF:	CAPPING TO BE ALUMINIUM POWDER COATED TO SELECTED COLOUR.
WALLS:	SELECTED CLAY BRICKWORK WHERE INDICATED OTHERWISE SELECTED SELF-COLOURED RENDER
JOINERY:	ALL WINDOWS AND DOORS, FRAMES AND LEAFS TO BE ALUMINIUM POWDER COATED TO APPROVED COLOUR OR UPVC OR PAINTED TIMBER TO APPROVED COLOUR. OBSCURE GLAZING WHERE INDICATED TO SENSITIVE WINDOWS.
RAINWATER GOODS:	GUTTERS, DOWNPIPES AND FIXINGS TO BE UPVC OR ALUMINIUM POWDER COATED TO SELECTED COLOUR TO MATCH ROOF CAPPING.
SOLAR PANELS:	INDICATIVE SOLAR PANEL POSITION, FINAL SOLAR PANEL POSITION DEPENDS ON HOUSE ORIENTATION. THE SOLAR PANELS INDICATED ARE A PROVISIONAL OPTION TO SATISFY RENEWABLE ENERGY REQUIREMENTS OF BUILDING REGULATIONS PART L. SOLAR PANELS MAY BE OMITTED IN FAVOUR OF ALTERNATIVE RENEWABLE ENERGY OPTIONS.



<b>RIAI</b>	<b>Planning Application</b>	<b>DAVEY + SMITH</b> ARCHITECTS
DAVEY+SMITH ARCHITECTS 113 SEAPORT BUILDING, 44HS CLONTARF ROAD, CLONTARF, DUBLIN 3. TEL: 01 2475311 EMAIL: info@davey-smith.com 1 WEB: www.davey-smith.com		
Layout ID: PH 053- Apartment Block J-	Scale: 1:100	Job No: 1515
Project: Adamstown SDZ - Phase 03	Series: PLANNING	Date: 10/12/2024
Drawing Name: Section and Elevations	Status: Planning	