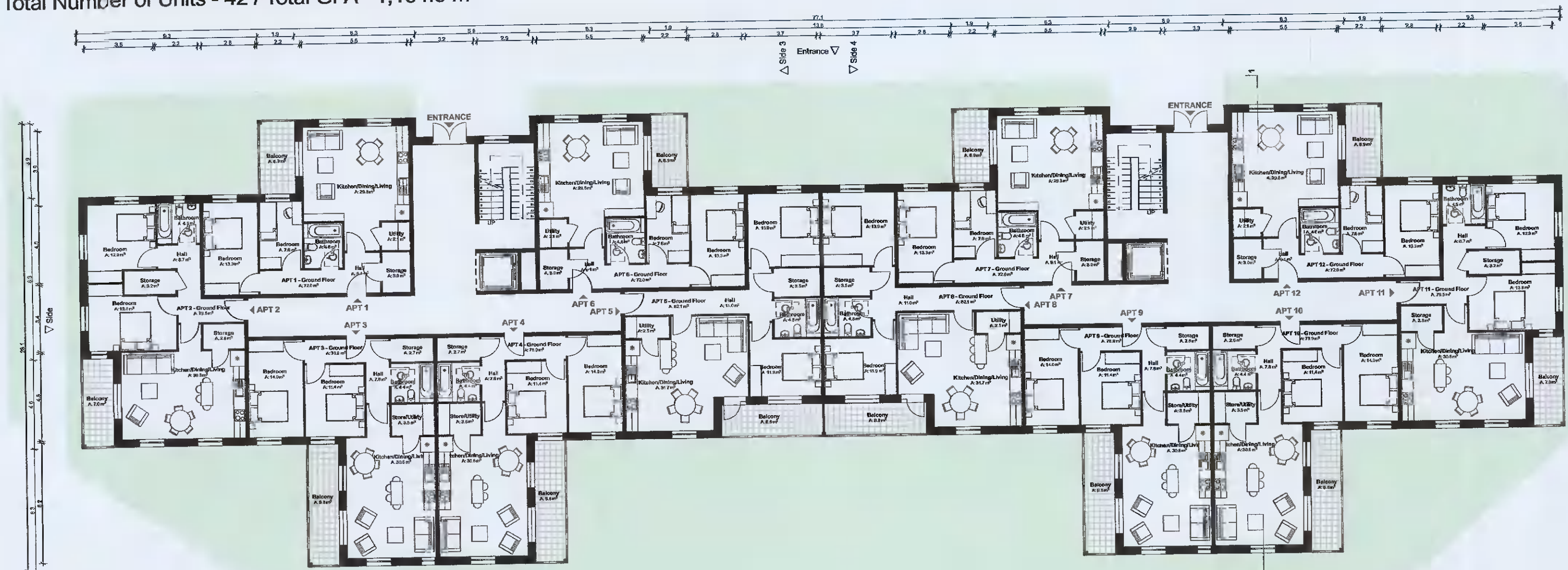
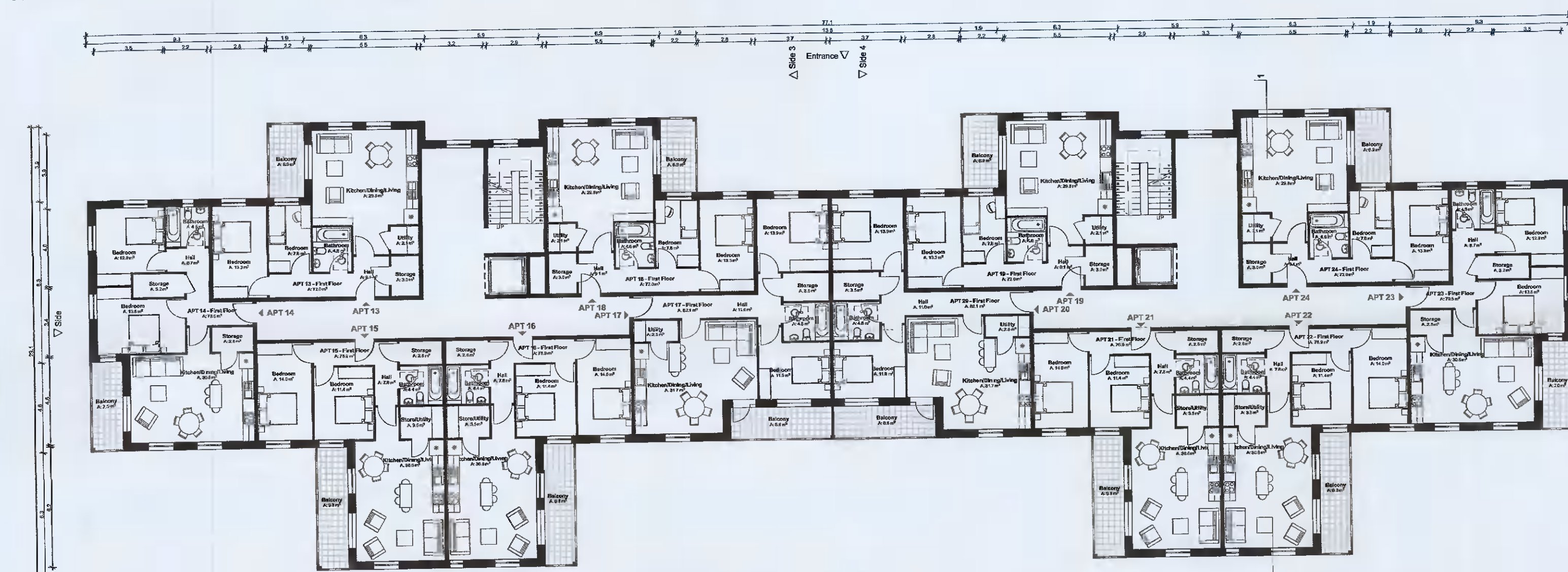


**APARTMENT BLOCK F**

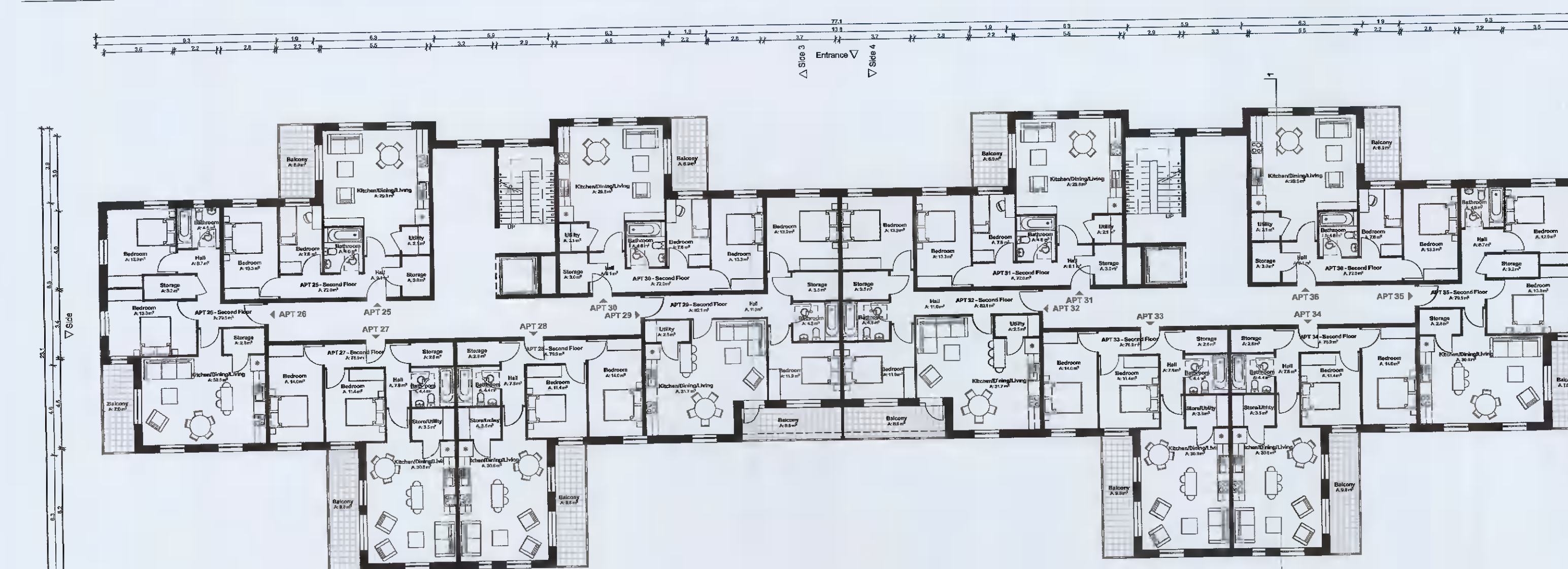
Total Number of Units - 42 / Total GFA - 1,134.5 m<sup>2</sup>



Ground Floor



First Floor



Second Floor

Apartment Block - F - Apartment 1, 6, 7, 12, 13, 18, 19, 24, 25, 30, 31 & 36		
Gross Internal Area		
Area Type	Proposed Area	DoHPCLG Area Min.
2 Bed Unit / 3 Person	72.0 m <sup>2</sup>	63.0 m <sup>2</sup>
Space Provision & Room Sizes		
Area Type	Proposed Area	DoHPCLG Area Min.
Aggregate Bedroom Area	20.9 m <sup>2</sup>	20.1 m <sup>2</sup>
Aggregate Living Area	29.8 m <sup>2</sup>	28.0 m <sup>2</sup>
Storage Provision		
Area Type	Proposed Area	DoHPCLG Area Min.
Storage	5.1 m <sup>2</sup>	5.0 m <sup>2</sup>

Apartment Block - F - Apartment 2, 11, 14, 23, 26 & 35		
Gross Internal Area		
Area Type	Proposed Area	DoHPCLG Area Min.
2 Bed Unit / 4 Person	79.5 m <sup>2</sup>	73.0 m <sup>2</sup>
Space Provision & Room Sizes		
Area Type	Proposed Area	DoHPCLG Area Min.
Aggregate Bedroom Area	26.7 m <sup>2</sup>	24.4 m <sup>2</sup>
Aggregate Living Area	30.6 m <sup>2</sup>	30.0 m <sup>2</sup>
Storage Provision		
Area Type	Proposed Area	DoHPCLG Area Min.
Storage	6.0 m <sup>2</sup>	6.0 m <sup>2</sup>

Apartment Block - F - Apartment 3, 4, 9, 10, 15, 16, 21, 22, 27, 28, 33 & 34		
Gross Internal Area		
Area Type	Proposed Area	DoHPCLG Area Min.
2 Bed Unit / 4 Person	76.9 m <sup>2</sup>	73.0 m <sup>2</sup>
Space Provision & Room Sizes		
Area Type	Proposed Area	DoHPCLG Area Min.
Aggregate Bedroom Area	25.4 m <sup>2</sup>	24.4 m <sup>2</sup>
Aggregate Living Area	30.6 m <sup>2</sup>	30.0 m <sup>2</sup>
Storage Provision		
Area Type	Proposed Area	DoHPCLG Area Min.
Storage	6.1 m <sup>2</sup>	6.0 m <sup>2</sup>

Apartment Block - F - Apartment 5, 8, 17, 20, 29 & 32		
Gross Internal Area		
Area Type	Proposed Area	DoHPCLG Area Min.
2 Bed Unit / 4 Person	82.1 m <sup>2</sup>	73.0 m <sup>2</sup>
Space Provision & Room Sizes		
Area Type	Proposed Area	DoHPCLG Area Min.
Aggregate Bedroom Area	25.8 m <sup>2</sup>	24.4 m <sup>2</sup>
Aggregate Living Area	31.7 m <sup>2</sup>	30.0 m <sup>2</sup>
Storage Provision		
Area Type	Proposed Area	DoHPCLG Area Min.
Storage	6.0 m <sup>2</sup>	6.0 m <sup>2</sup>

Apartment Block - F - Total 42 No. of Units		
1 Bed Apartment / 2 Person	Total 2 No. of Units	
2 Bed Apartment / 3 Person	Total 12 No. of Units	
2 Bed Apartment / 4 Person	Total 28 No. of Units	

Refer to Site Plan for:

- Finished floor levels to survey datum
- Orientation
- Handing of type for each unit

**Notes**

Do not scale from this drawing.  
Use figured dimensions only.  
All errors and omissions to be reported to the Architect.  
This drawing is to be read in conjunction with relevant consultant's drawings.  
All dimensions are in millimetres and all levels are in meters to match Datums unless otherwise noted.

This drawing is for planning purposes only and not for construction.  
This drawing or design may not be reproduced without permission.

NOTES ON FINISHES:	
ROOF:	CAPPING TO BE ALUMINIUM POWDER COATED TO SELECTED COLOUR.
WALLS:	SELECTED CLAY BRICKWORK WHERE INDICATED OTHERWISE SELECTED SELF-COLOURED RENDER
JOINERY:	ALL WINDOWS AND DOORS, FRAMES AND LEAFS TO BE ALUMINIUM POWDER COATED TO APPROVED COLOUR OR UPVC OR PAINTED TIMBER TO APPROVED COLOUR. OBSCURE GLAZING WHERE INDICATED TO SENSITIVE WINDOWS.
RAINWATER GOODS:	GUTTERS, DOWNPIPES AND FIXINGS TO BE UPVC OR ALUMINIUM POWDER COATED TO SELECTED COLOUR TO MATCH ROOF CAPPING.
SOLAR PANELS:	INDICATIVE SOLAR PANEL POSITION, FINAL SOLAR PANEL POSITION DEPENDS ON HOUSE ORIENTATION. THE SOLAR PANELS INDICATED ARE A PROVISIONAL OPTION TO SATISFY RENEWABLE ENERGY REQUIREMENTS OF BUILDING REGULATIONS PART L. SOLAR PANELS MAY BE OMITTED IN FAVOUR OF ALTERNATIVE RENEWABLE ENERGY OPTIONS.



KEY PLAN