

APARTMENT BLOCK A

7 no. two story apartment duplex + 2 no. one storey apartment

Notes

Do not scale from this drawing.
Use figured dimensions only.
All errors and omissions to be reported to the Architect.
This drawing is to be read in conjunction with relevant consultant's drawings.
All dimensions are in millimetres and all levels are in meters to match Datums unless otherwise noted.

This drawing is for planning purposes only and not for construction.
This drawing or design may not be reproduced without permission.



Side 2 Elevation



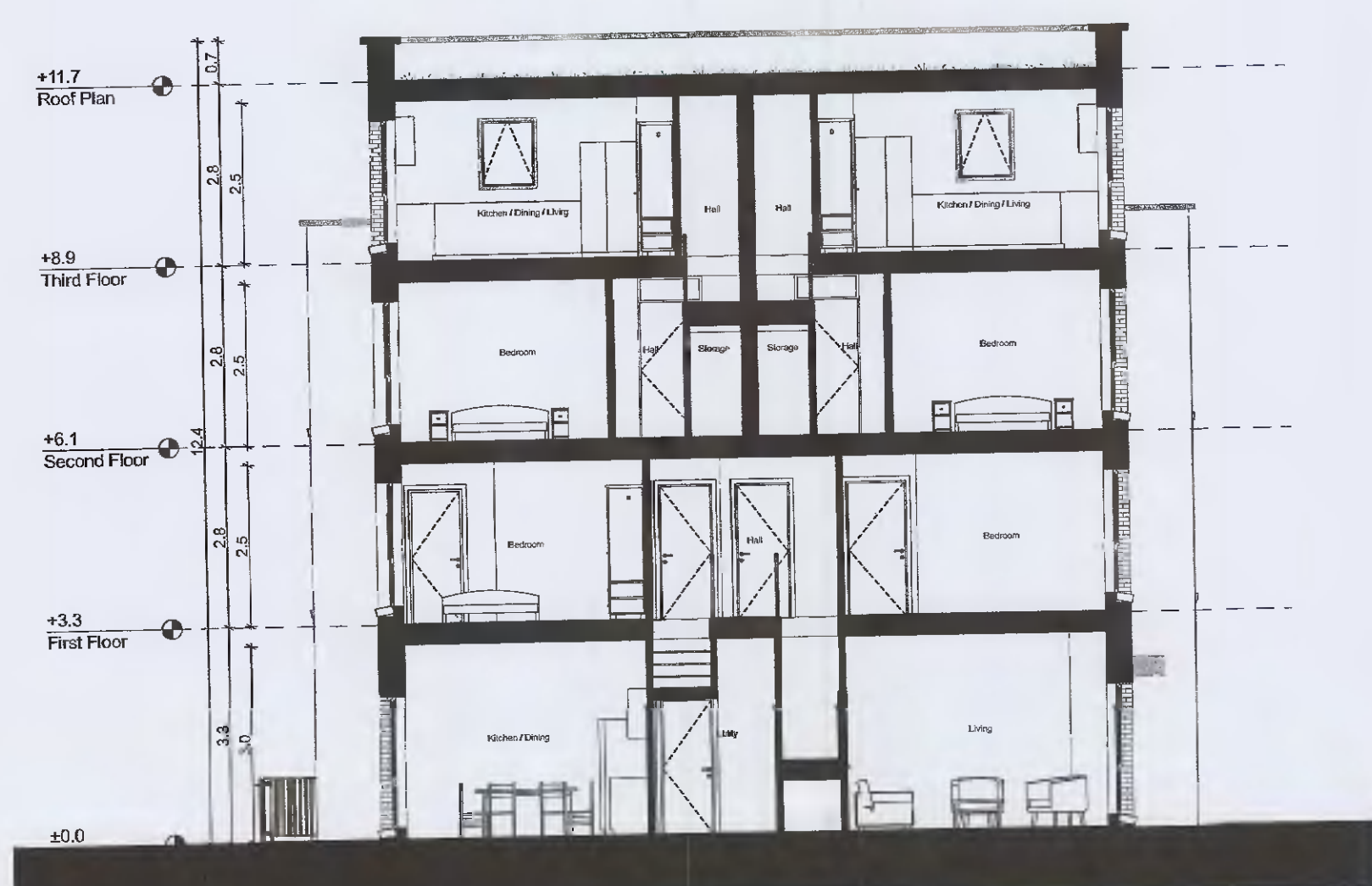
Entrance Elevation



Side Elevation

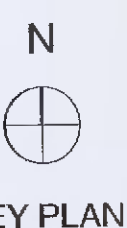


Back Elevation



Typical Section

NOTES ON FINISHES:	
ROOF:	CAPPING TO BE ALUMINIUM POWDER COATED TO SELECTED COLOUR.
WALLS:	SELECTED CLAY BRICKWORK WHERE INDICATED OTHERWISE SELECTED SELF-COLOURED RENDER
JOINERY:	ALL WINDOWS AND DOORS, FRAMES AND LEAFS TO BE ALUMINIUM POWDER COATED TO APPROVED COLOUR OR UPVC OR PAINTED TIMBER TO APPROVED COLOUR. OBSCURE GLAZING WHERE INDICATED TO SENSITIVE WINDOWS.
RAINWATER GOODS:	GUTTERS, DOWNPIPES AND FIXINGS TO BE UPVC OR ALUMINIUM POWDER COATED TO SELECTED COLOUR TO MATCH ROOF CAPPING.
SOLAR PANELS:	INDICATIVE SOLAR PANEL POSITION, FINAL SOLAR PANEL POSITION DEPENDS ON HOUSE ORIENTATION. THE SOLAR PANELS INDICATED ARE A PROVISIONAL OPTION TO SATISFY RENEWABLE ENERGY REQUIREMENTS OF BUILDING REGULATIONS PART L. SOLAR PANELS MAY BE OMITTED IN FAVOUR OF ALTERNATIVE RENEWABLE ENERGY OPTIONS.



RIAI	Planning Application	DAVEY + SMITH ARCHITECTS
Layout ID: PH 024 - Apartment Block A- Project: Adamstown SDZ - Phase 03 Drawing Name: Section and Elevations		Scale: 1:100 Job No: 1515 Series: PLANNING Date: 09/12/2021 Status: Planning

THIS DRAWING TO BE READ IN CONJUNCTION WITH RELEVANT CONSULTANT DRAWINGS. NOT TO BE REPRODUCED OR TRANSMITTED IN ANY FORM OR BY ANY MEANS, ELECTRONIC OR MECHANICAL, INCLUDING PHOTOCOPYING, RECORDING, OR BY ANY INFORMATION STORAGE AND RETRIEVAL SYSTEM. ALL RIGHTS RESERVED. © 2021 DAVEY + SMITH ARCHITECTS.