



Electrical Services Ltd.
Unit 11 Bellevue Industrial Estate
Finglas
Dublin 11

**PUBLIC LIGHTING DESIGN
FOR THE
RESIDENTIAL DEVELOPMENT
AT
ST. EDMUNDS,
ST. LOMANS ROAD, PALMERSTOWN, DUBLIN 20**



Document No: STED-SAB-XX-PL-E-6000
Issue: SHD
Date: 15th December 2021
Prepared By: Graham Sheehan
Email: graham@sabrelighting.ie
Tel: 01 8110875



BALLYDOWD
SPECIAL
SCHOOL

PART
VIII
HOUSING
SCHEME

TYPE A COLUMN DETAILS

HEIGHT :	5m
BRACKET LENGTH :	Posttop
INCLINATION :	5 Degrees
LANE WIDTH :	7
LANE DETAILS	
AVERAGE WATTAGE (GLD) :	20W LED
MAKE & MODEL :	C.U.Primo P803-12F3AW-CM0300
TYPE B COLUMN DETAILS	
HEIGHT :	5m
BRACKET LENGTH :	Posttop
INCLINATION :	0 Degrees
LANE WIDTH :	8
LANE DETAILS	
AVERAGE WATTAGE (GLD) :	27W LED
MAKE & MODEL :	C.U.Primo P803-12F3AW-CM0700
TYPE C COLUMN DETAILS	
HEIGHT :	5m
BRACKET LENGTH :	Posttop
INCLINATION :	0 Degrees
LANE WIDTH :	13
LANE DETAILS	
AVERAGE WATTAGE (GLD) :	13W LED
MAKE & MODEL :	C.U.Primo P803-12F3AW-CM0300

TYPE D COLUMN DETAILS

HEIGHT :	5m
BRACKET LENGTH :	Posttop
INCLINATION :	0 Degrees
LANE WIDTH :	12
LANE DETAILS	
AVERAGE WATTAGE (GLD) :	7.4W LED
MAKE & MODEL :	UHS FMS4 5207 1014351C @ 200mA

Notes:
 All LED luminaires must have Constant Light Output (CLO).
 All luminaires must be approved for use in the relevant zone.
 All luminaires must be approved for use in the relevant zone.
 All luminaires must be approved for use in the relevant zone.
 All luminaires must be approved for use in the relevant zone.



SABRE ELECTRICAL SERVICES LTD.
 Specialist Contractors
 PUBLIC LIGHTING - FLOOD LIGHTING - SPORTS LIGHTING

Sabre
 ELECTRICAL SERVICES LTD.
 Specialist Contractors
 PUBLIC LIGHTING - FLOOD LIGHTING - SPORTS LIGHTING

UNIT 11,
 BELLEVUE INDUSTRIAL ESTATE,
 FINGLAS,
 DUBLIN 11.
 E-MAIL: graham@sabrelighting.ie PH: 01-911 0875

CLIENT/CUSTOMER
Moykerr Limited
 St Edmund's Lucan

PROJECT
 Public Lighting ISOLUX

DRAWN :	SCALE :	DATE :
G.S	1:500@A1	24-11-21
DRAWING NUMBER :	SES 17921	ISSUE :
1		1
DRAWING NUMBER :	edit	
DRAWING OWNER :	edit	

DO NOT SCALE FROM THIS DRAWING

DATE: 10 December 2021
DESIGNER: Graham Sheehan
PROJECT No: SES 17821 Rev A
PROJECT NAME: St Edmund's Moykerr Limited



Designed in accordance with ISEN13201-2:2015 Class P4 for public roads. P5 for private courtyards.

Rev A: Latest site layout used.

Outdoor Lighting Report

PREPARED BY: Sabre Electrical Services Ltd.
Unit 11 Bellevue Ind. Est.
Finglas
Dublin 11.
Email: graham@sabrelighting.ie
Ph: 01 8110875

Layout Report

General Data

Dimensions in Metres Angles in Degrees

Calculation Grids

ID	Grid Name	X	Y	X' Length	Y' Length	X' Spacing	Y' Spacing
1	Grid 1	595.00	578.00	201.00	225.00	1.50	1.50
2	Grid 2	635.00	612.00	80.00	55.00	1.00	1.00

Luminaires

Luminaire A Data



Supplier	C U Phosco
Type	P852-12-F3-WW-CA0500-20W
Lamp(s)	730C WW
Lamp Flux (klm)	2.26
File Name	P852-12-F3-WW-CA0500-20W.ies
Maintenance Factor	0.83
Imax70,80,90(cd/klm)	693.4, 572.2, 102.0
No. in Project	7

Luminaire B Data



Supplier	C U Phosco
Type	P852-12-F2-WW-CA0700-27W
Lamp(s)	730C WW
Lamp Flux (klm)	3.08
File Name	P852-12-F2-WW-CA0700-27W.ies
Maintenance Factor	0.83
Imax70,80,90(cd/klm)	750.5, 280.0, 34.0
No. in Project	8

Luminaire C Data



Supplier	C U Phosco
Type	P852-12-R3B-WW-CA0300-13W
Lamp(s)	730C WW
Lamp Flux (klm)	1.52
File Name	P852-12-R3B-WW-CA0300-13W.ies
Maintenance Factor	0.83
Imax70,80,90(cd/klm)	876.7, 56.5, 1.7
No. in Project	13

Luminaire D Data



Supplier	Urbis Schreder
Type	FLEXIA TOP 5302 Deep shape PC 10 LH3 51C@200mA WW 730 230V
Lamp(s)	10 LH351C@200mA WW 730 230V
LampFlux(klm)/Colour	0.90 WW 3000K/70
File Name	FLEXIA TOP 5302 10 LH351C 200mA WW 730 7.4W 445392 Deep shape PC 230V T...
Maintenance Factor	0.83
Imax70,80,90(cd/klm)	824.1, 112.0, 61.2
No. in Project	12

Layout

ID	Type	X	Y	Height	Angle	Tilt	Cant	Out-reach	Target X	Target Y	Target Z
1	B	608.06	690.42	6.00	272.00	0.00	0.00	0.40			
2	B	637.01	673.45	6.00	92.00	0.00	0.00	0.40			
3	B	664.95	690.38	6.00	272.00	0.00	0.00	0.40			
4	B	690.40	673.18	6.00	87.00	0.00	0.00	0.40			
5	B	718.05	679.78	6.00	157.00	0.00	0.00	0.40			
6	A	715.89	701.92	6.00	5.00	0.00	0.00	0.40			
7	A	719.61	741.71	6.00	0.00	0.00	0.00	0.40			
8	A	719.87	768.97	6.00	359.00	0.00	0.00	0.40			
9	B	729.61	795.36	6.00	268.00	0.00	0.00	0.40			

Layout Continued

ID	Type	X	Y	Height	Angle	Tilt	Cant	Out-reach	Target X	Target Y	Target Z
10	B	747.09	794.81	6.00	272.00	0.00	0.00	0.40			
11	B	740.70	770.50	6.00	96.00	0.00	0.00	0.40			
12	C	736.90	681.07	6.00	62.00	0.00	0.00	0.40			
13	C	769.83	661.59	6.00	62.00	0.00	0.00	0.40			
14	C	754.29	670.31	6.00	58.00	0.00	0.00	0.40			
16	C	620.08	659.61	6.00	179.00	0.00	0.00	0.40			
17	C	619.08	635.22	6.00	180.00	0.00	0.00	0.40			
18	A	619.54	613.23	6.00	173.00	0.00	0.00	0.40			
19	A	612.34	720.65	6.00	358.00	0.00	0.00	0.40			
20	A	612.51	699.69	6.00	357.00	0.00	0.00	0.40			
21	C	661.54	701.62	6.00	346.00	0.00	0.00	0.40			
22	C	635.32	596.88	6.00	89.00	0.00	0.00	0.40			
23	C	664.79	599.82	6.00	276.00	0.00	0.00	0.40			
24	C	690.37	605.05	6.00	284.00	0.00	0.00	0.40			
25	C	715.26	609.53	6.00	291.00	0.00	0.00	0.40			
26	C	727.06	623.73	6.00	341.00	0.00	0.00	0.40			
27	C	734.12	646.49	6.00	332.00	0.00	0.00	0.40			
28	C	741.00	668.07	6.00	331.00	0.00	0.00	0.40			
29	A	716.14	724.49	6.00	4.00	0.00	0.00	0.40			
30	D	652.58	648.81	5.00	2.00	0.00	0.00	0.00			
31	D	660.72	649.73	5.00	358.00	0.00	0.00	0.00			
32	D	660.91	629.83	5.00	356.00	0.00	0.00	0.00			
33	D	646.33	649.73	5.00	178.00	0.00	0.00	0.00			
34	D	646.39	629.52	5.00	186.00	0.00	0.00	0.00			
35	D	655.33	628.78	5.00	183.00	0.00	0.00	0.00			
36	D	696.57	650.49	5.00	175.00	0.00	0.00	0.00			
37	D	686.91	649.01	5.00	183.00	0.00	0.00	0.00			
38	D	704.68	648.49	5.00	337.00	0.00	0.00	0.00			
39	D	686.69	632.05	5.00	181.00	0.00	0.00	0.00			
40	D	697.31	630.28	5.00	285.00	0.00	0.00	0.00			
41	D	711.34	656.99	5.00	158.00	0.00	0.00	0.00			

Horizontal Illuminance (lux)

Grid 1



Results

Eav	5.06
Emin	1.04
Emax	13.56
Emin/Emax	0.08
Emin/Eav	0.20

Horizontal Illuminance (lux)

Grid 1

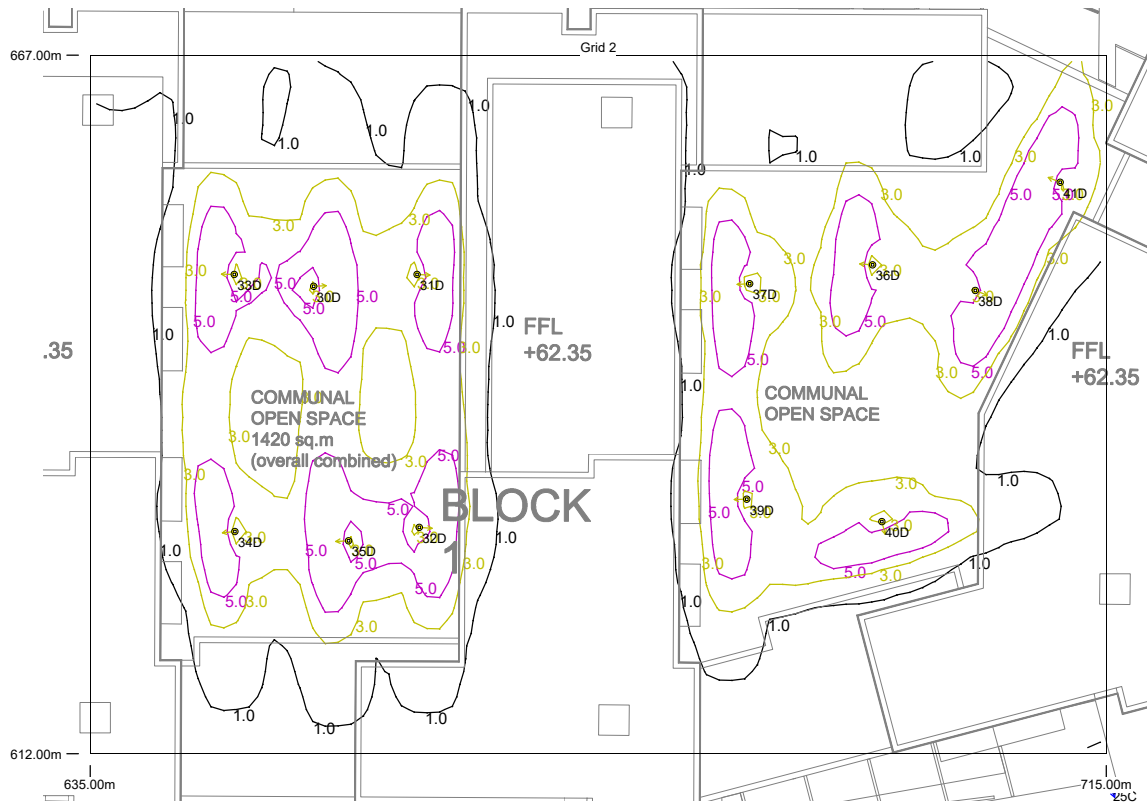


Results

Eav	5.06
Emin	1.04
Emax	13.56
Emin/Emax	0.08
Emin/Eav	0.20

Horizontal Illuminance (lux)

Grid 2

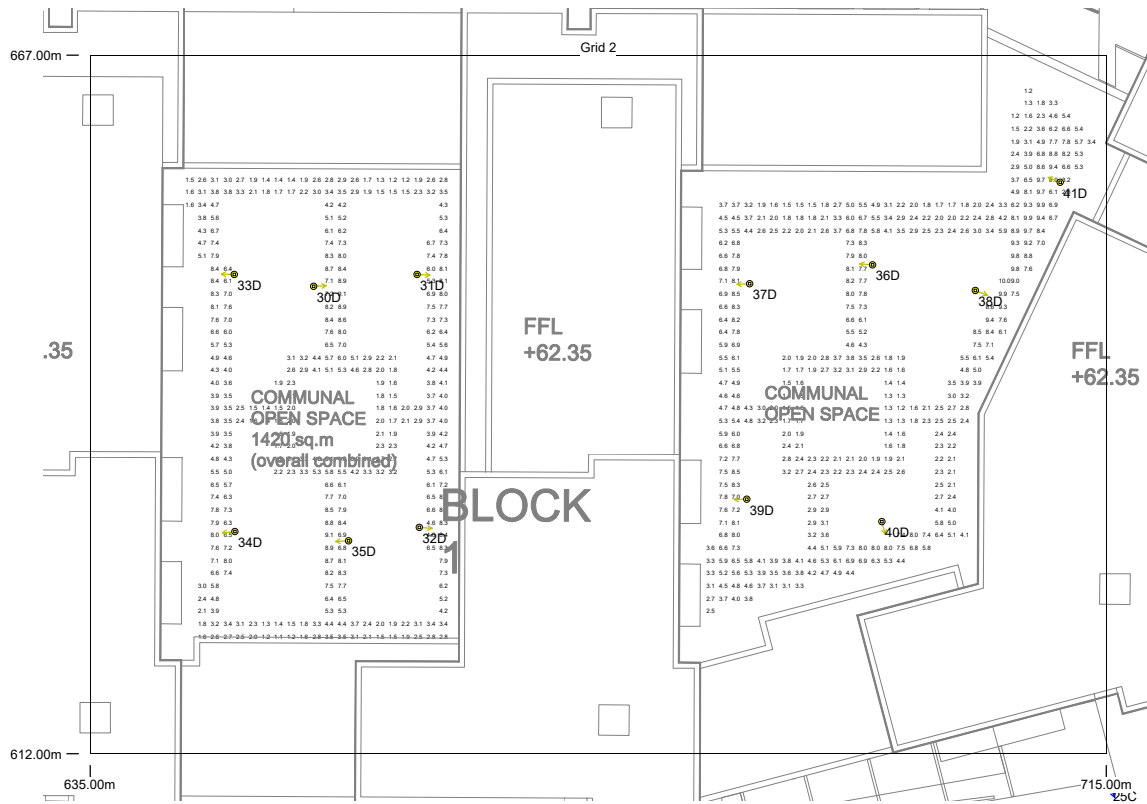


Results

Eav	4.51
Emin	1.10
Emax	9.97
Emin/Emax	0.11
Emin/Eav	0.24

Horizontal Illuminance (lux)

Grid 2



Results

Eav	4.51
Emin	1.10
Emax	9.97
Emin/Emax	0.11
Emin/Eav	0.24