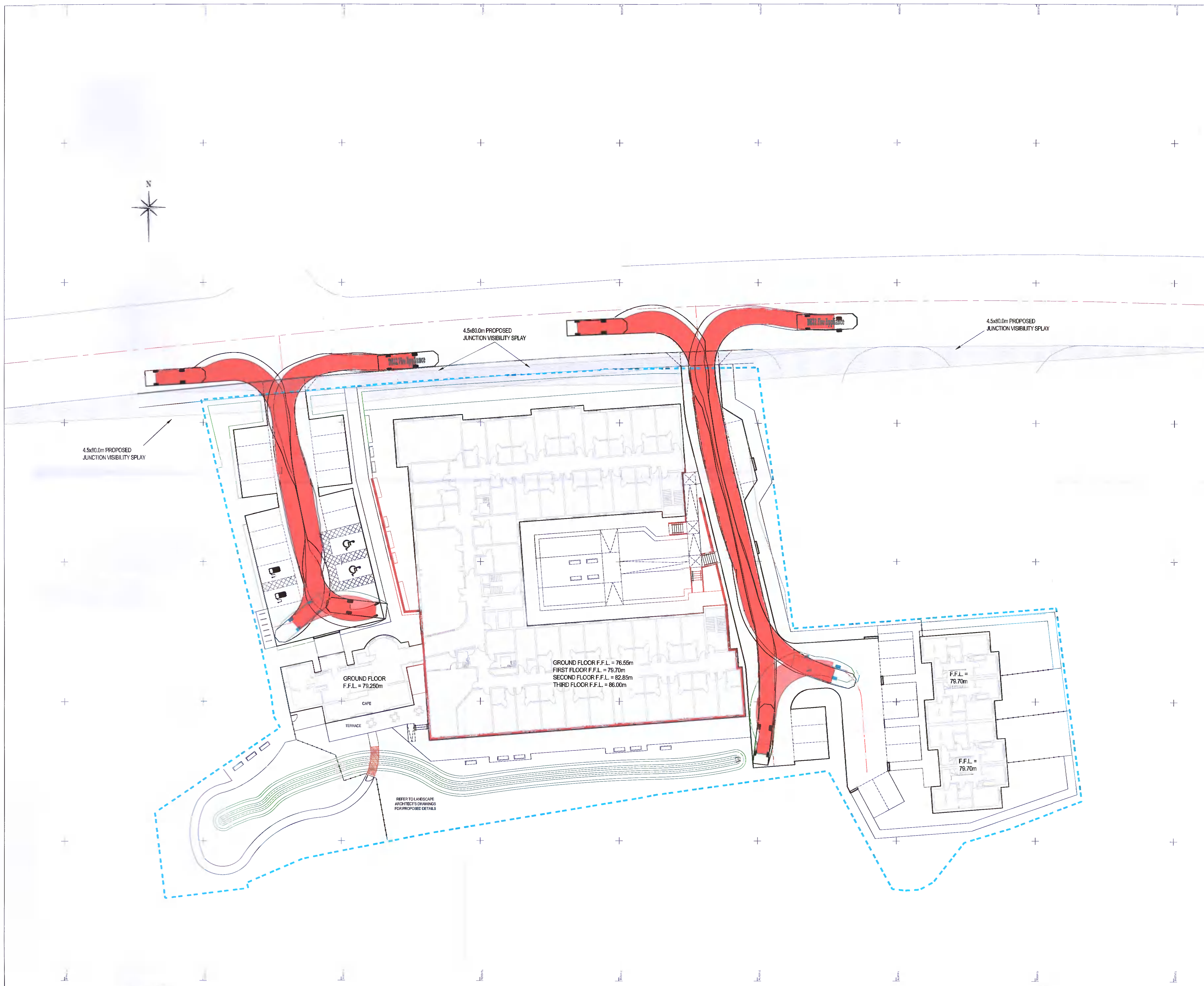


Pumping Appliance  
 Overall Length 7.500m  
 Overall Width 2.500m  
 Overall Body Height 3.300m  
 Min Body Ground Clearance 0.140m  
 Track Width 2.500m  
 Lock-to-lock time 4.00s  
 Curb to Curb Turning Radius 7.750m



GROUND FLOOR F.F.L. = 76.55m  
 FIRST FLOOR F.F.L. = 79.70m  
 SECOND FLOOR F.F.L. = 82.85m  
 THIRD FLOOR F.F.L. = 86.00m

GROUND FLOOR  
 F.F.L. = 79.250m

F.F.L. = 79.70m

F.F.L. = 79.70m

REFER TO LANDSCAPE ARCHITECT'S DRAWINGS FOR PROPOSED DETAILS

REV.	By	Appr'd	Date

Client: Morrison Community Care Group

Development: Residential Care Home  
 Taylors Lane, Rathfarnham  
 Dublin

Drawing Title: Proposed Autotrack Layout  
 Emergency Vehicle

Scale	Date	Drawn	Approved
1:250	Nov. 2021	SK	G.R.Perch

**Cowal Design Consultants**  
 Civil & Structural Engineering • Development Services

Dunoon- 01389 707 652    Glasgow- 0141 406 1688  
 London- 020 3856 6144    Cban-01631 571 280

WEB-www.cowaldesign.co.uk  
 Email-info@cowaldesign.co.uk

Copyright, Design and Patents Act 1988  
 This drawing must not be reproduced without the permission of  
 Cowal Design Consultants Ltd

Status	Planning
Drawing No.	21-3406-C-SK-050
Rev.	-