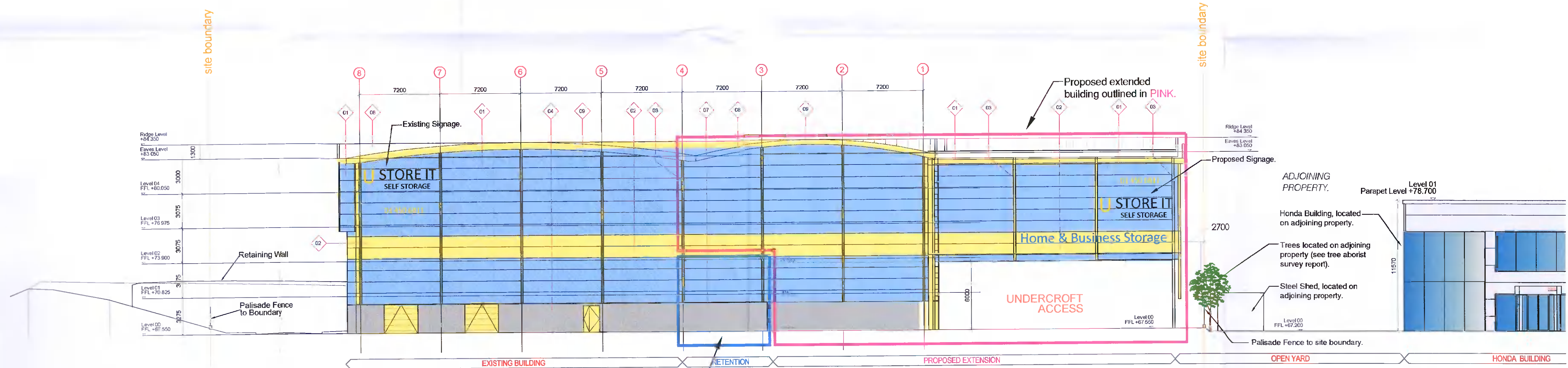


North-West Elevation (Scale 1:200).

FACADE FINISHES LEGEND							
CODE	DESCRIPTION	ELEMENT	REF.	CODE	DESCRIPTION	ELEMENT	REF.
01	METAL COMPOSITE CLADDING KINGSPAN - 1811 MICRO RIB RS1000 PANELS COLOUR - 'CORNFLOWER BLUE'	CLADDING	EWS-101	07	DOUBLE GLAZED WINDOW UNITS	GLAZING	EWS-701
02	METAL COMPOSITE CLADDING KINGSPAN - 1811 MICRO RIB RS1000 PANELS COLOUR - 'SUNFLOWER YELLOW'	CLADDING	EWS-102	08	CURVED COMPOSITE CLADDING TO ROOF	ROOF CLADDING	ROF-101
03	TOP HAT SECTION COLOUR - 'SUNFLOWER YELLOW'	TOP HAT	EWS-103	09	EAVES DETAIL COLOUR - 'SUNFLOWER YELLOW'	ROOF CLADDING	ROF-102
04	PLASTER & PAINT FINISH	BLOCKWORK	EWS-201	11	ROLLER SHUTTER DOORS COLOUR - 'SUNFLOWER YELLOW'	DOORS	DR-101
06	STICK BUILT CURTAIN WALLING SYSTEM	GLAZING	EWS-601				



South-East Elevation (Scale 1:200).

CLADDING COLOURS:

- Cornflower Blue BS 18E53 for the main cladding panels.
- Sunflower Yellow BS 10E55 for the fascia, eyebrow, top hat sections, windows at upper levels and flashings around upper level windows, underside and fascia of canopy, sectional doors and external fire doors. Vertical fins are removed.

PLANNING DRAWINGS ONLY

NOTES:	REV. DATE: DETAILS:	INITIALS: REV. DATE: DETAILS:	INITIALS: REV. DATE: DETAILS:	INITIALS: REV. DATE: DETAILS:	INITIALS: REV. DATE: DETAILS:	INITIALS: NORTH POINT:	KEY PLAN:			No. 53, Church Street, Cavan, Co Cavan. Tel: 049-4365462 E-mail: info@jmcconsultants.ie Fax: 049-4365467 Web: jmcconsultants.ie	
					'A' Dec. 21 Additional Details shown to site boundaries, and adjoining property to the north.				PROJECT: EXTENSION TO SELF STORAGE UNIT AT BALLYMOUNT BUSINESS PARK CLIENT: HSIL PROPERTIES TITLE: ELEVATIONS 03 & 04 ISSUE TYPE: PLANNING APPLICATION STAGE	PROJECT NO.: 21_31 DRAWING NO.: 2131_P-12 DRAWN BY: KS CHECKED BY: JJ	DATE: 20-07-2021 REVISION: 'A' SCALE AT A1: 1:200 SCALE AT A3: NTS