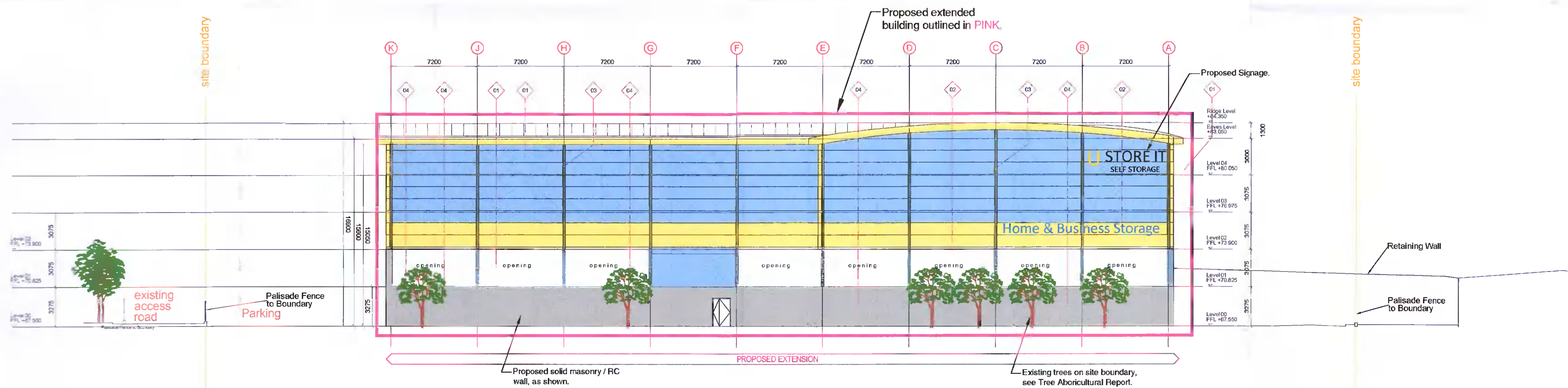




South-West Elevation (Scale 1:200).

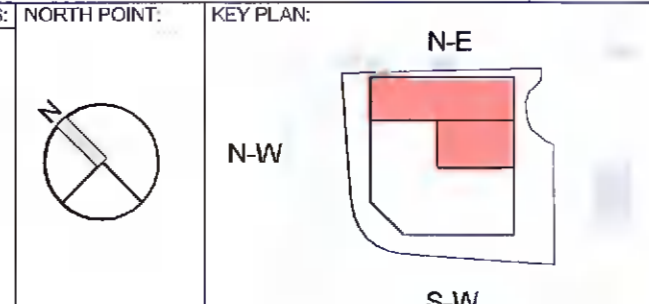
| FACADE FINISHES LEGEND | | | | | | | |
|------------------------|---|-----------|---------|------|--|---------------|---------|
| CODE | DESCRIPTION | ELEMENT | REF. | CODE | DESCRIPTION | ELEMENT | REF. |
| 01 | METAL COMPOSITE CLADDING KINGSPAN - MIN MICRO FIBRE KS1000 PANELS COLOUR - CORNFLOWER BLUE | CLADDING | EWS-101 | 07 | DOUBLE GLAZED WINDOW UNITS | GLAZING | EWS-701 |
| 02 | METAL COMPOSITE CLADDING KINGSPAN - MIN MICRO FIBRE KS1000 PANELS COLOUR - SUNFLOWER YELLOW | CLADDING | EWS-102 | 08 | CURVED COMPOSITE CLADDING TO ROOF | ROOF CLADDING | ROF-101 |
| 03 | TCP HAT SECTION COLOUR - SUNFLOWER YELLOW | TOP HAT | EWS-103 | 09 | EAVES DETAIL COLOUR - SUNFLOWER YELLOW | ROOF CLADDING | ROF-102 |
| 04 | PLASTER & PAINT FINISH | BLOCKWORK | EWS-201 | 11 | ROLLER SHUTTER DOORS COLOUR - SUNFLOWER YELLOW | DOORS | DR-101 |
| 06 | STICK BUILT CURTAIN WALLING SYSTEM | GLAZING | EWS-601 | | | | |



North-East Elevation (Scale 1:200).

CLADDING COLOURS:

-  Cornflower Blue BS 18E53 for the main cladding panels.
-  Sunflower Yellow BS 10E55 for the fascia, eyebrow, top hat sections, windows at upper levels and flashings around upper level windows, underside and fascia of canopy, sectional doors and external fire doors. Vertical fins are removed.

| | | | | | | | | | | | | | |
|--------|---------------------|-------------------------------|-------------------------------|-------------------------------|-------------------------------|------------------------|-----------|---|--|---|-----------|--------------|------------|
| NOTES: | REV: DATE: DETAILS: | INITIALS: REV: DATE: DETAILS: | INITIALS: REV: DATE: DETAILS: | INITIALS: REV: DATE: DETAILS: | INITIALS: REV: DATE: DETAILS: | INITIALS: NORTH POINT: | KEY PLAN: |  | | J.M. Johnston Project management & landscape design solutions No. 53, Church Street, Cavan, Co Cavan. Tel: 048-4365462 E-mail: info@jmjconsultants.ie Fax: 048-4365467 Web: jmjconsultants.ie | | | |
| | | | | | | | | PROJECT: | EXTENSION TO SELF STORAGE UNIT AT BALLYMOUNT BUSINESS PARK | PROJECT NO.: | 21_31 | DATE: | 20-07-2021 |
| | | | | | | | | CLIENT: | HSIL PROPERTIES | DRAWING NO.: | 2131_P-11 | REVISION: | |
| | | | | | | | | TITLE: | ELEVATIONS 01 & 02 | DRAWN BY: | KS | SCALE AT A1: | 1:200 |
| | | | | | | | | ISSUE TYPE: | PLANNING APPLICATION STAGE | CHECKED BY: | JJ | SCALE AT A3: | NTS |