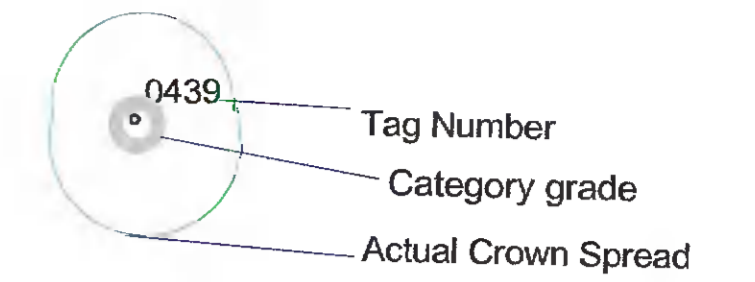


Notes:



BS5837: 2012 - Category Retention Rating

Category U Trees-
Trees in such a condition that any existing value would be lost within 10 years or being recommended for removal sound arboricultural practice.

Category A Trees
Trees of high quality/value with a min. of 40 years life expectancy.

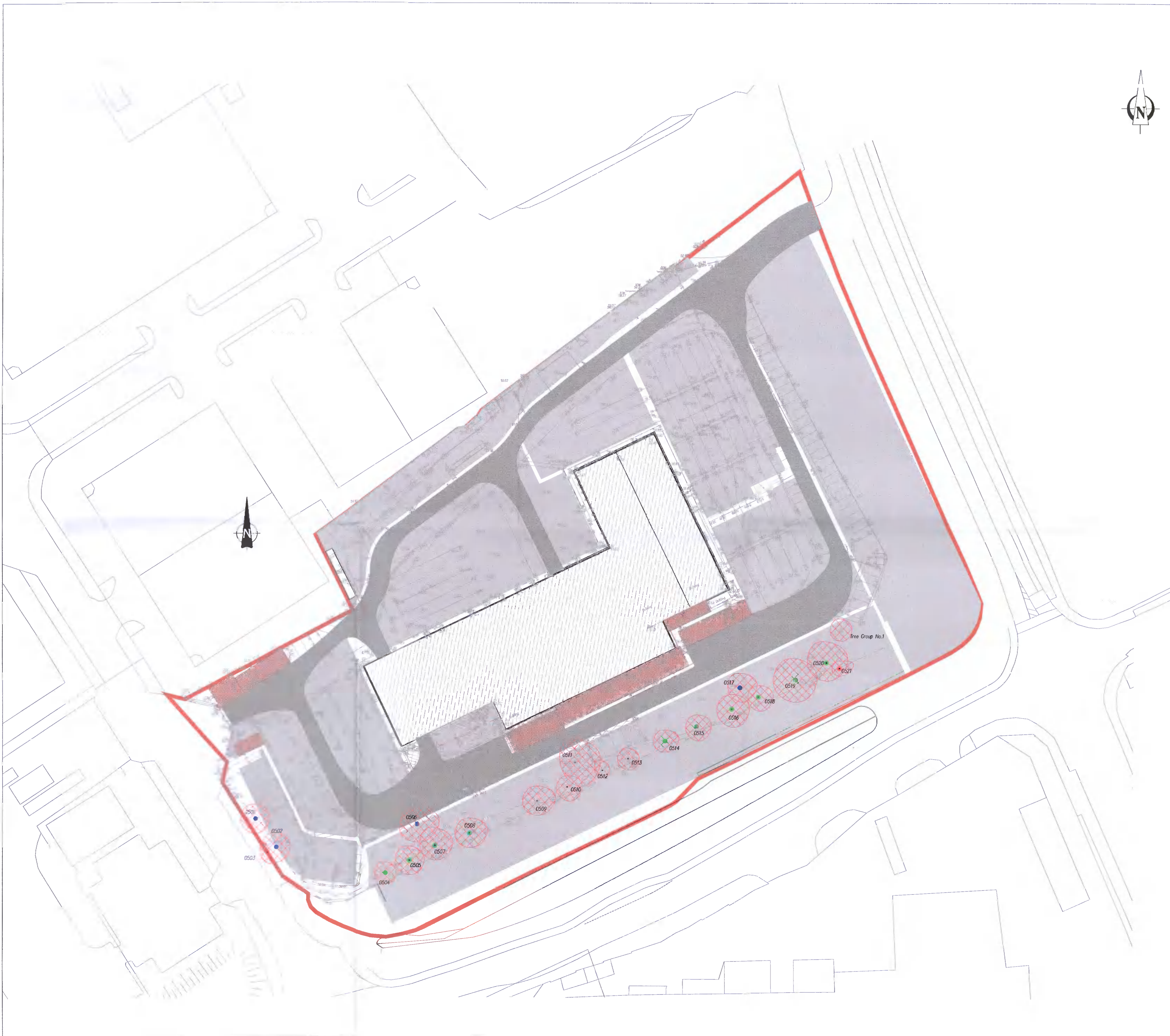
Category B Trees
Trees of moderate quality/value with a min. of 20 years life expectancy.

Category C Trees
Trees of low quality/value with a min. of 10 years life expectancy.

Sub Categories

- 1- Mainly Arboricultural values
- 2- Mainly Landscape value
- 3- Mainly cultural and conservation values.

Trees being removed.



ARBORIST ASSOCIATES LTD.
94 BALLYBAWN COTTAGES, ENNISKERRY, CO. WICKLOW
TEL: 01-2742011 / 087-2629589

TITLE : Arboricultural Impact Assessment

Site : Go Ahead Ireland Bus Depot,
Ballymount Rd Lower, Dublin 12.

DATE:	Dwg No.BMR002	Scale 1:500 © A1
--------------	---------------	------------------