

**DESIGN ISSUE**  
THE DESIGN IS SUBJECT TO PLANNING APPROVAL AND DETAILED DESIGN.



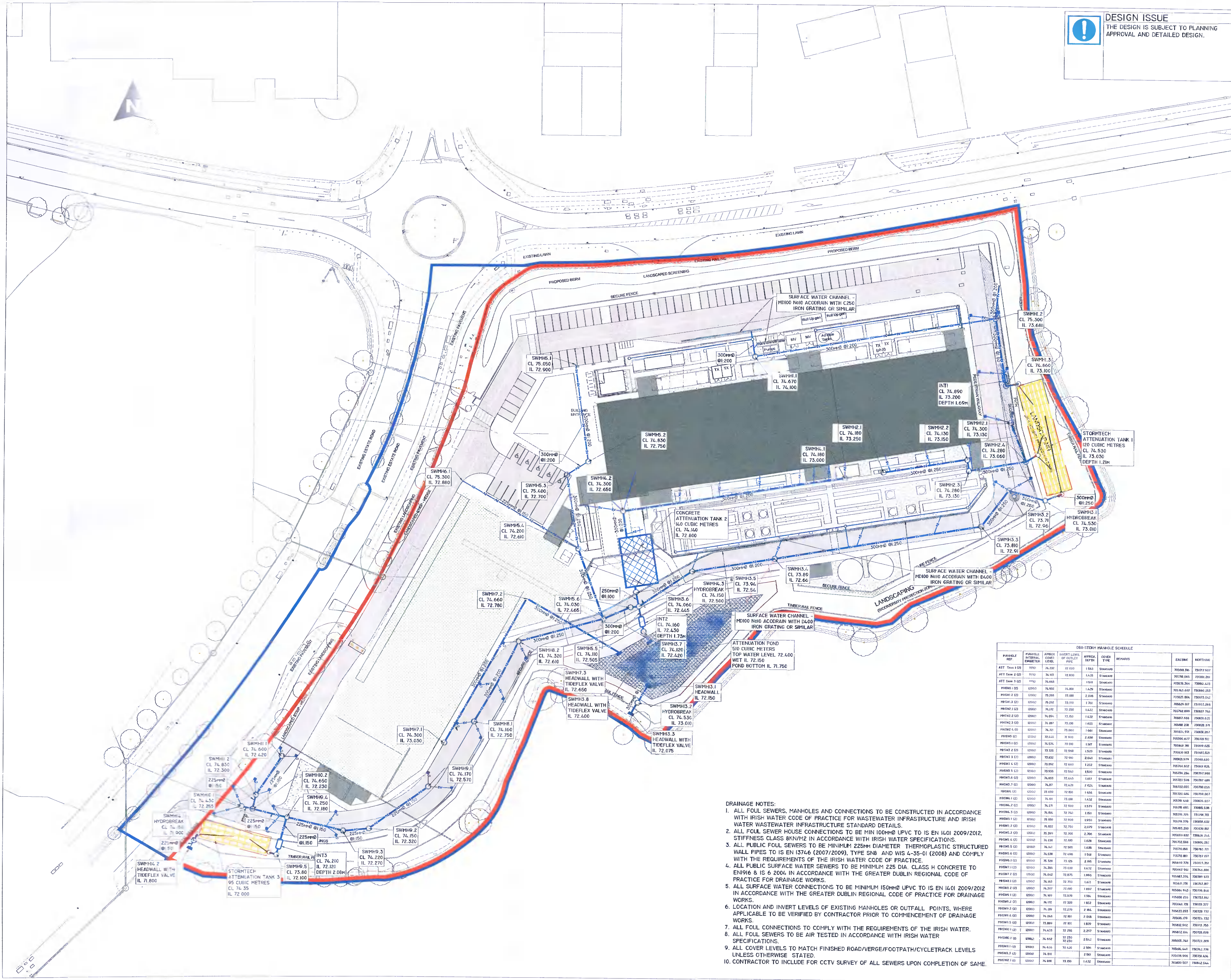
**HAZARD IDENTIFICATION LEGEND:**

HAZARD IDENTIFICATION (if none state 'none relevant')	CONTROL AND MITIGATION MEASURES

**NOTE:** Hazards listed above are only those considered significant risks and:  
a) not likely to be obvious to a competent contractor or other designers;  
b) unusual; or  
c) likely to be difficult to manage effectively

**LEGEND**

	PROPOSED PRIVATE SURFACE WATER SEWER
	PROPOSED PRIVATE FOUL SEWER
	EXISTING PRIVATE FOUL WATER SEWER
	EXISTING PRIVATE SURFACE WATER SEWER
	EXISTING PUBLIC FOUL SEWER
	EXISTING PUBLIC SURFACE WATER SEWER
	MANHOLE
	ORANGE CHANNEL
	DRAINAGE RUN TO BE ABANDONED
	INTERNAL FOUL GULLY PIPE
	ROAD GULLY
	ROOFING EYE
	SUMP UNIT WITH RODDABLE AIR TRAP
	SOIL VENT PIPE
	STUB STACK
	AIR ADMITTANCE VALVE
	FOUL INTERCEPT TRAP
	RAINWATER DOWNPIPE
	SIPHONIC RAINWATER DOWNPIPE
	PROPOSED LEVEL
	EXISTING TIE IN LEVEL
	EXISTING LEVEL
	SITE BOUNDARY
	CONCRETE ATTENUATION TANK
	STORMTECH ATTENUATION TANK



**DRAINAGE NOTES:**

- ALL FOUL SEWERS, MANHOLES AND CONNECTIONS TO BE CONSTRUCTED IN ACCORDANCE WITH IRISH WATER CODE OF PRACTICE FOR WASTEWATER INFRASTRUCTURE AND IRISH WATER WASTEWATER INFRASTRUCTURE STANDARD DETAILS.
- ALL FOUL SEWER HOUSE CONNECTIONS TO BE MIN 100mm UPVC TO IS EN 1401 2009/2012, STIFFNESS CLASS BkN/m<sup>2</sup> IN ACCORDANCE WITH IRISH WATER SPECIFICATIONS.
- ALL PUBLIC FOUL SEWERS TO BE MINIMUM 225mm DIAMETER THERMOPLASTIC STRUCTURED WALL PIPES TO IS EN 13746 (2007/2009), TYPE S8 AND WIS 4-35-01 (2008) AND COMPLY WITH THE REQUIREMENTS OF THE IRISH WATER CODE OF PRACTICE.
- ALL PUBLIC SURFACE WATER SEWERS TO BE MINIMUM 225 DIA. CLASS H CONCRETE TO EN 1916 & IS 6 2004 IN ACCORDANCE WITH THE GREATER DUBLIN REGIONAL CODE OF PRACTICE FOR DRAINAGE WORKS.
- ALL SURFACE WATER CONNECTIONS TO BE MINIMUM 150mm UPVC TO IS EN 1401 2009/2012 IN ACCORDANCE WITH THE GREATER DUBLIN REGIONAL CODE OF PRACTICE FOR DRAINAGE WORKS.
- LOCATION AND INVERT LEVELS OF EXISTING MANHOLES OR OUTFALL POINTS, WHERE APPLICABLE TO BE VERIFIED BY CONTRACTOR PRIOR TO COMMENCEMENT OF DRAINAGE WORKS.
- ALL FOULED CONNECTIONS TO COMPLY WITH THE REQUIREMENTS OF THE IRISH WATER.
- ALL FOUL SEWERS TO BE AIR TESTED IN ACCORDANCE WITH IRISH WATER SPECIFICATIONS.
- ALL COVER LEVELS TO MATCH FINISHED ROAD/VERGE/FOOTPATH/CYCLETRACK LEVELS UNLESS OTHERWISE STATED.
- CONTRACTOR TO INCLUDE FOR CCTV SURVEY OF ALL SEWERS UPON COMPLETION OF SAME.

**DEB-STORY MANHOLE SCHEDULE**

MANHOLE REF	MANHOLE INTERNAL DIAMETER	ANNULAR COVER LEVEL	INVERT LEVEL OF OUTLET PIPE	APPROX. COVER DEPTH	COVER TYPE	REMARKS	EASTING	NORTHING
ATT Tank 1 (G)	1770	74.232	72.510	1.563	STANDARD		70408.86	73077.907
ATT Tank 2 (G)	1770	74.143	72.800	1.425	STANDARD		70738.063	73085.284
ATT Tank 3 (G)	1770	74.444	72.800	1.501	STANDARD		70838.364	73084.473
PHSH1 (G)	1000	74.942	74.800	1.426	STANDARD		70743.629	73084.253
PHSH2 (G)	1000	75.268	73.888	2.098	STANDARD		70585.804	73075.042
PHSH3 (G)	1000	75.232	73.000	1.701	STANDARD		70649.017	73085.266
PHSH4 (G)	1000	74.712	73.250	1.432	STANDARD		70742.890	73087.746
PHSH5 (G)	1000	74.661	73.580	1.435	STANDARD		70807.688	73083.025
PHSH6 (G)	1000	74.787	73.580	1.435	STANDARD		70586.208	73083.378
PHSH7 (G)	1000	74.700	73.560	1.461	STANDARD		70555.437	73083.287
PHSH8 (G)	1000	74.615	73.900	2.436	STANDARD		70555.437	73083.287
PHSH9 (G)	1000	74.934	73.000	1.987	STANDARD		70544.788	73084.425
PHSH10 (G)	1000	75.225	72.960	1.520	STANDARD		70643.163	73082.626
PHSH11 (G)	1000	75.832	72.900	2.643	STANDARD		70643.163	73082.626
PHSH12 (G)	1000	75.092	72.650	1.812	STANDARD		70740.824	73084.824
PHSH13 (G)	1000	75.092	72.650	1.812	STANDARD		70740.824	73084.824
PHSH14 (G)	1000	74.668	73.243	1.437	STANDARD		70726.284	73079.988
PHSH15 (G)	1000	74.668	73.243	1.437	STANDARD		70726.284	73079.988
PHSH16 (G)	1000	74.787	73.423	1.437	STANDARD		70726.284	73079.988
PHSH17 (G)	1000	74.668	73.423	1.437	STANDARD		70726.284	73079.988
PHSH18 (G)	1000	74.668	73.423	1.437	STANDARD		70726.284	73079.988
PHSH19 (G)	1000	74.668	73.423	1.437	STANDARD		70726.284	73079.988
PHSH20 (G)	1000	74.668	73.423	1.437	STANDARD		70726.284	73079.988
PHSH21 (G)	1000	74.668	73.423	1.437	STANDARD		70726.284	73079.988
PHSH22 (G)	1000	74.668	73.423	1.437	STANDARD		70726.284	73079.988
PHSH23 (G)	1000	74.668	73.423	1.437	STANDARD		70726.284	73079.988
PHSH24 (G)	1000	74.668	73.423	1.437	STANDARD		70726.284	73079.988
PHSH25 (G)	1000	74.668	73.423	1.437	STANDARD		70726.284	73079.988
PHSH26 (G)	1000	74.668	73.423	1.437	STANDARD		70726.284	73079.988
PHSH27 (G)	1000	74.668	73.423	1.437	STANDARD		70726.284	73079.988
PHSH28 (G)	1000	74.668	73.423	1.437	STANDARD		70726.284	73079.988
PHSH29 (G)	1000	74.668	73.423	1.437	STANDARD		70726.284	73079.988
PHSH30 (G)	1000	74.668	73.423	1.437	STANDARD		70726.284	73079.988
PHSH31 (G)	1000	74.668	73.423	1.437	STANDARD		70726.284	73079.988
PHSH32 (G)	1000	74.668	73.423	1.437	STANDARD		70726.284	73079.988
PHSH33 (G)	1000	74.668	73.423	1.437	STANDARD		70726.284	73079.988
PHSH34 (G)	1000	74.668	73.423	1.437	STANDARD		70726.284	73079.988
PHSH35 (G)	1000	74.668	73.423	1.437	STANDARD		70726.284	73079.988
PHSH36 (G)	1000	74.668	73.423	1.437	STANDARD		70726.284	73079.988
PHSH37 (G)	1000	74.668	73.423	1.437	STANDARD		70726.284	73079.988
PHSH38 (G)	1000	74.668	73.423	1.437	STANDARD		70726.284	73079.988
PHSH39 (G)	1000	74.668	73.423	1.437	STANDARD		70726.284	73079.988
PHSH40 (G)	1000	74.668	73.423	1.437	STANDARD		70726.284	73079.988
PHSH41 (G)	1000	74.668	73.423	1.437	STANDARD		70726.284	73079.988
PHSH42 (G)	1000	74.668	73.423	1.437	STANDARD		70726.284	73079.988
PHSH43 (G)	1000	74.668	73.423	1.437	STANDARD		70726.284	73079.988
PHSH44 (G)	1000	74.668	73.423	1.437	STANDARD		70726.284	73079.988
PHSH45 (G)	1000	74.668	73.423	1.437	STANDARD		70726.284	73079.988
PHSH46 (G)	1000	74.668	73.423	1.437	STANDARD		70726.284	73079.988
PHSH47 (G)	1000	74.668	73.423	1.437	STANDARD		70726.284	73079.988
PHSH48 (G)	1000	74.668	73.423	1.437	STANDARD		70726.284	73079.988
PHSH49 (G)	1000	74.668	73.423	1.437	STANDARD		70726.284	73079.988
PHSH50 (G)	1000	74.668	73.423	1.437	STANDARD		70726.284	73079.988

REV	DATE	DESCRIPTION	FORUM	APP
P02	17.08.21	ISSUED FOR TENDER	FORUM	
P01	20.08.21	ISSUED FOR FORMAL REVIEW	FORUM	

**Key:**

**Project:**  
EQUINIX DB081

**Drawing Title:**  
SURFACE WATER  
SITE DRAINAGE

**Drawing Number:**  
DB080-PIN-00-ZZ-DR-C-PLAN-1207

**Scale:** 1:500    **Paper Size:** A1    **Purpose:** D2    **Revision:** P02

**PINNACLE**  
CONSULTING ENGINEERS

SIXTH FLOOR PROSPECT HOUSE 100 NEW OXFORD STREET LONDON WC1A 1HB    Tel: 0207 4334110