

**DESIGN ISSUE**  
THE DESIGN IS SUBJECT TO PLANNING APPROVAL AND DETAILED DESIGN.



**HAZARD IDENTIFICATION LEGEND:**

HAZARD IDENTIFICATION (if none state 'none relevant')	CONTROL AND MITIGATION MEASURES

**NOTE:**  
Hazards listed above are only those considered significant risks and:  
a) not likely to be obvious to a competent contractor or other designers;  
b) unusual; or  
c) likely to be difficult to manage effectively

**LEGEND**

- PROPOSED PRIVATE SURFACE WATER SEWER
- PROPOSED PRIVATE FOLL SEWER
- EXISTING PRIVATE FOLL WATER SEWER
- EXISTING PRIVATE SURFACE WATER SEWER
- EXISTING PUBLIC FOLL SEWER
- EXISTING PUBLIC SURFACE WATER SEWER
- MANHOLE BACKDROP
- DRAINAGE CHANNEL
- DRAINAGE RUN TO BE ABANDONED
- INTERNAL FOLL GULLY PIPE
- ROAD GULLY
- ROOFING PIPE
- SUMP LIFT WITH RODDABLE AIR TRAP
- SOIL VENT PIPE
- SLUB STACK
- AIR ADJUSTANCE VALVE
- FOLL INTERCEPTOR TRAP
- RAINWATER DOWNPIPE
- SPRINKLER RAINWATER DOWNPIPE
- PROPOSED LEVEL
- EXISTING TIE IN LEVEL
- EXISTING LEVEL
- SITE BOUNDARY
- CONCRETE ATTENUATION TANK
- STORMTECH ATTENUATION TANK

REV	DATE	DESCRIPTION	DRAWN	CHK APPR
P05	17.08.21	ISSUED FOR TENDER	EA/UM	EA/UM
P04	20.08.21	ISSUED FOR PRELIMINARY REVIEW	EA/UM	EA/UM
P03	25.08.21	TENDER ISSUE	EA/UM	EA/UM
P02	15.08.21	PLANNING ISSUE	AS/UM	AS/UM
P01	10.08.21	STAGES ISSUE	AS/UM	AS/UM

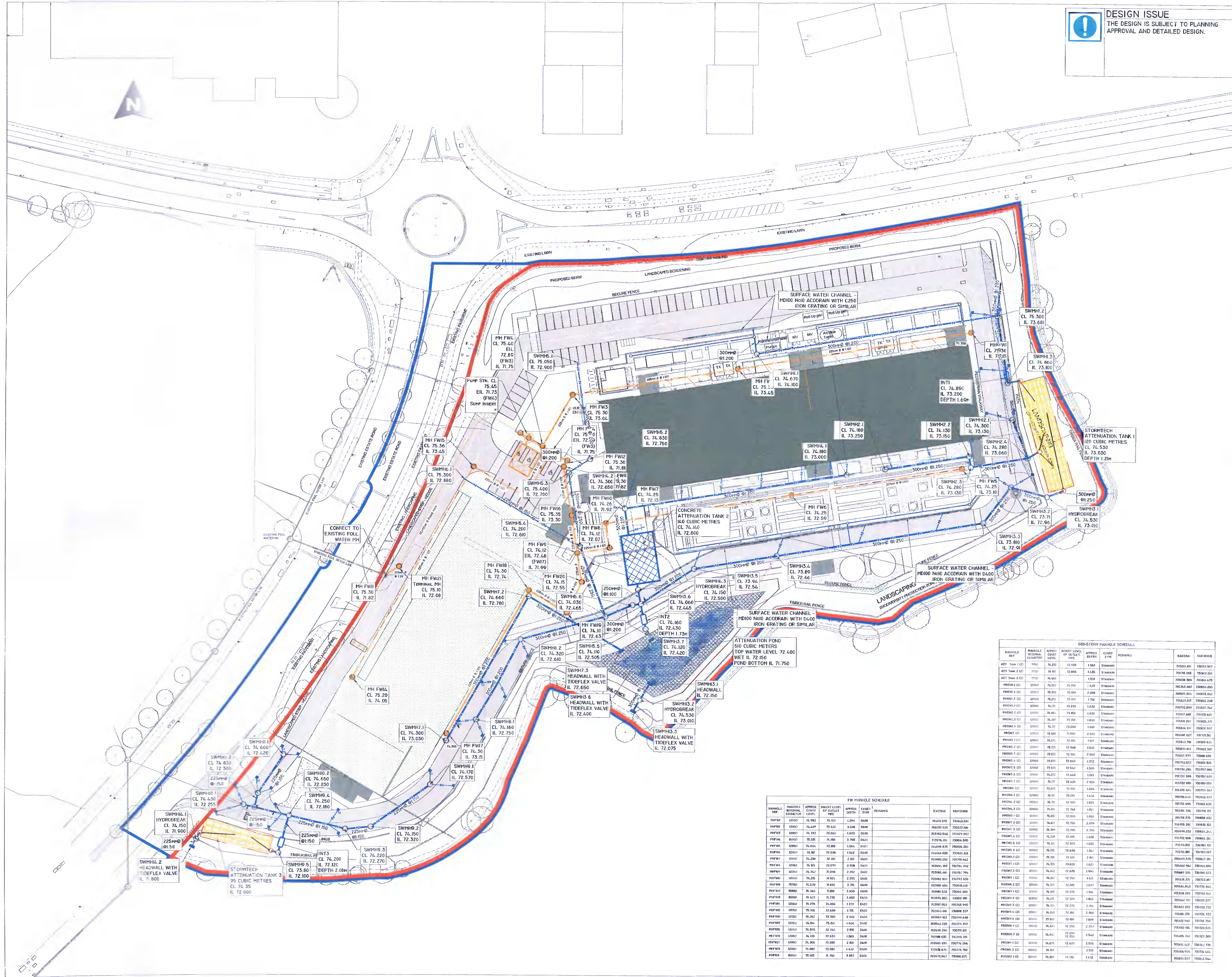
**Key:**

Project:  
EQUINIX DB081

Drawing Title:  
**SITE DRAINAGE**

Drawing Number:  
DB080-PIN-00-ZZ-DR-C-PLAN-1205

Scale: 1:500 Paper Size: A1 Purpose: D2 Revision: P05



**FW MANHOLE SCHEDULE**

MANHOLE REF	MANHOLE INTERNAL COORDINATE	APPROX. COVER LEVEL	INVERT LEVEL OF OUTLET PIPE	APPROX. COVER TYPE	REMARKS	EASTING	NORTHING
MFHW1	10000	74.982	74.953	1.200	CS&S	705010.035	730463.531
MFHW2	10000	74.427	73.450	3.000	CS&S	705023.038	730537.346
MFHW3	10000	74.733	73.640	1.693	CS&S	705182.644	730591.683
MFHW4	10000	75.538	74.780	3.768	CS&S	705079.180	730618.800
MFHW5	10000	74.244	73.380	1.864	CS&S	704409.638	730608.300
MFHW6	10000	74.382	73.530	1.852	CS&S	704624.633	730600.388
MFHW7	10000	74.230	73.380	2.850	CS&S	705095.092	730616.442
MFHW8	10000	74.928	73.670	2.250	CS&S	705091.997	730616.502
MFHW9	10000	74.242	73.910	2.332	CS&S	705086.480	730617.794
MFHW10	10000	74.235	73.920	2.295	CS&S	705082.635	730618.830
MFHW11	10000	74.236	73.650	3.579	CS&S	705086.464	730618.420
MFHW12	10000	75.344	74.887	4.457	CS&S	705086.532	730618.399
MFHW13	10000	75.433	74.770	3.663	CS&S	705097.803	730618.991
MFHW14	10000	75.276	74.650	1.235	CS&S	705097.653	730619.505
MFHW15	10000	75.165	73.450	1.705	CS&S	705093.481	730618.537
MFHW16	10000	75.302	73.300	2.002	CS&S	705069.163	730579.408
MFHW17	10000	74.844	73.657	1.184	CS&S	705066.038	730579.397
MFHW18	10000	75.344	74.740	2.606	CS&S	705096.784	730618.997
MFHW19	10000	74.938	74.240	2.698	CS&S	705098.635	730619.290
MFHW20	10000	74.700	73.850	2.850	CS&S	705085.979	730619.794
MFHW21	10000	74.683	72.680	1.432	CS&S	705098.970	730619.788
MFHW22	10000	75.415	74.750	3.663	CS&S	705092.843	730618.871

**DBS-STORM MANHOLE SCHEDULE**

MANHOLE REF	MANHOLE INTERNAL COORDINATE	APPROX. COVER LEVEL	INVERT LEVEL OF OUTLET PIPE	APPROX. COVER TYPE	REMARKS	EASTING	NORTHING
ATT Tank 1 (E)	12000	74.252	72.008	1.943	STAINLESS	705663.304	730673.907
ATT Tank 2 (E)	12100	74.101	72.800	1.435	STAINLESS	705708.066	730618.284
ATT Tank 3 (E)	12200	74.646	74.666	1.638	STAINLESS	705838.366	730641.473
PHWH1 (E)	12000	74.557	74.100	1.429	STAINLESS	705745.687	730620.263
PHWH2 (E)	12000	75.209	73.641	2.008	STAINLESS	706081.804	730673.042
PHWH3 (E)	12000	74.231	73.300	1.706	STAINLESS	705629.017	730633.238
PHWH4 (E)	12000	74.101	73.850	1.432	STAINLESS	705708.066	730618.284
PHWH5 (E)	12000	74.661	73.400	1.432	STAINLESS	705745.687	730620.263
PHWH6 (E)	12000	74.207	73.150	1.655	STAINLESS	705618.201	730618.519
PHWH7 (E)	12000	74.300	73.000	1.668	STAINLESS	705634.511	730618.747
PHWH8 (E)	12000	74.444	73.000	1.450	STAINLESS	705668.427	730618.361
PHWH9 (E)	12000	74.511	73.400	1.617	STAINLESS	705683.781	730619.623
PHWH10 (E)	12000	74.725	72.940	1.820	STAINLESS	705851.843	730622.342
PHWH11 (E)	12000	73.637	72.910	2.048	STAINLESS	705437.979	730618.456
PHWH12 (E)	12000	73.670	72.640	2.232	STAINLESS	705708.066	730618.284
PHWH13 (E)	12000	74.661	73.850	1.432	STAINLESS	705745.687	730620.263
PHWH14 (E)	12000	74.603	73.445	1.617	STAINLESS	705736.261	730619.968
PHWH15 (E)	12000	74.117	72.420	2.024	STAINLESS	705522.465	730618.055
PHWH16 (E)	12000	74.610	72.800	1.654	STAINLESS	705629.017	730618.284
PHWH17 (E)	12000	74.101	73.150	1.432	STAINLESS	705618.201	730618.519
PHWH18 (E)	12000	74.719	72.900	1.820	STAINLESS	705851.843	730622.342
PHWH19 (E)	12000	74.719	72.900	2.048	STAINLESS	705437.979	730618.456
PHWH20 (E)	12000	74.661	73.850	1.432	STAINLESS	705745.687	730620.263
PHWH21 (E)	12000	74.603	73.445	1.617	STAINLESS	705736.261	730619.968
PHWH22 (E)	12000	74.117	72.420	2.024	STAINLESS	705522.465	730618.055
PHWH23 (E)	12000	74.610	72.800	1.654	STAINLESS	705629.017	730618.284
PHWH24 (E)	12000	74.101	73.150	1.432	STAINLESS	705618.201	730618.519
PHWH25 (E)	12000	74.719	72.900	1.820	STAINLESS	705851.843	730622.342