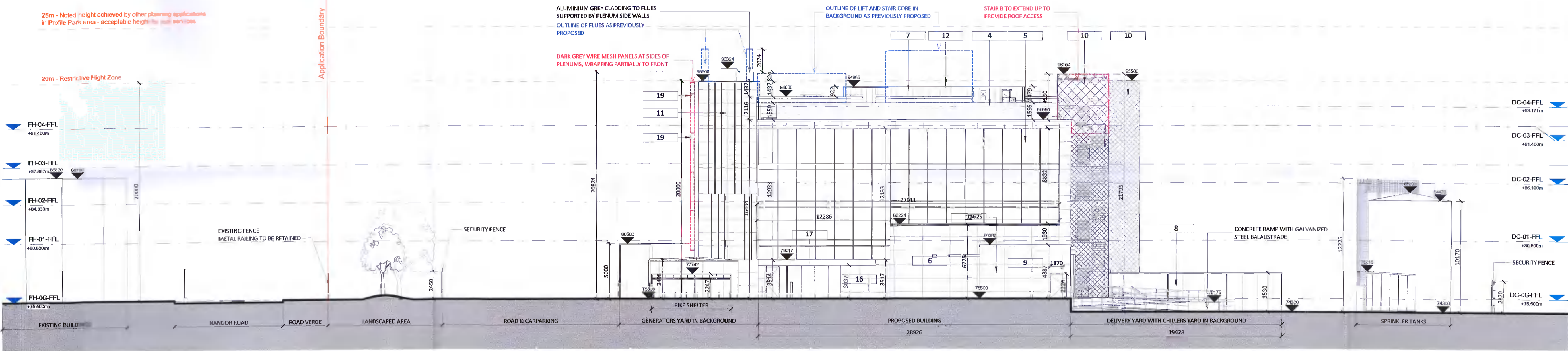


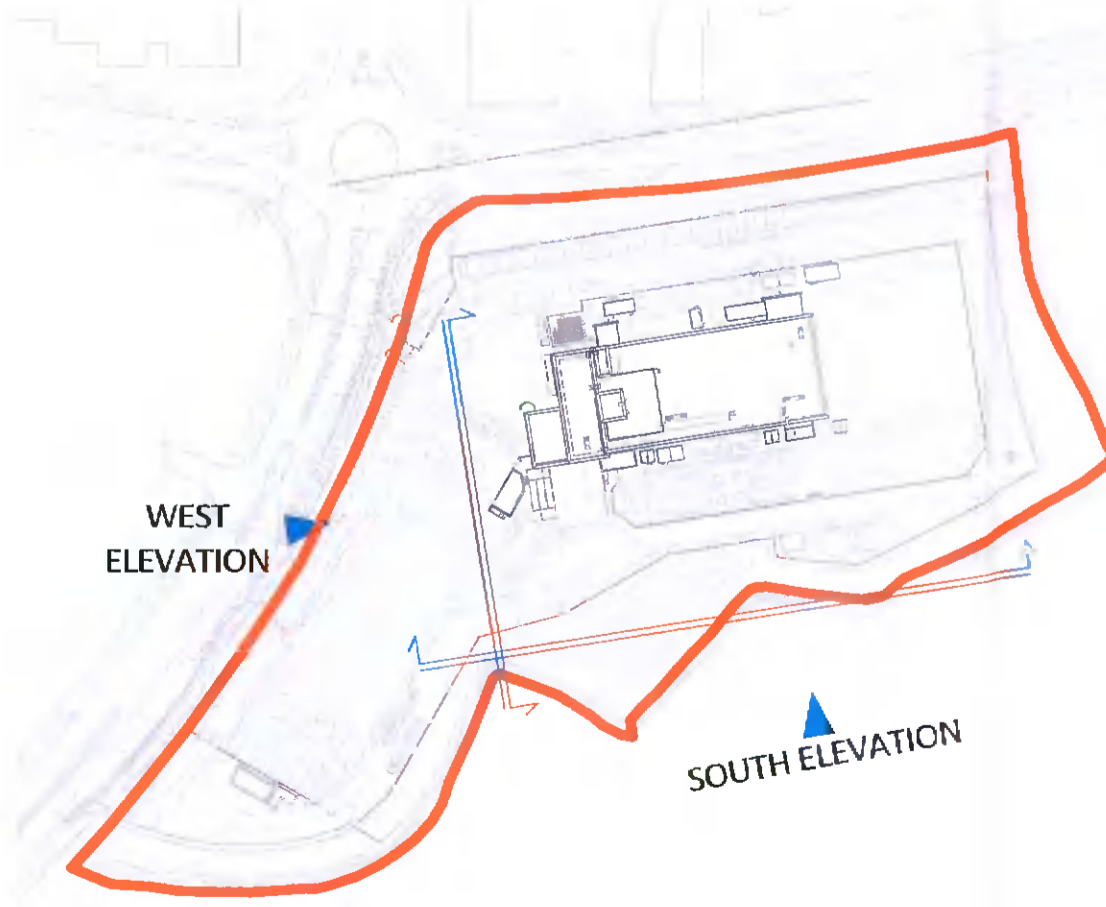
**1 Proposed South Elevation**  
1:200



**2 Proposed West Elevation**  
1:200

**MATERIAL LEGEND:**

- |   |   |
|---|---|
| <p>1 COMPOSITE CLADDING PANEL INSTALLED HORIZONTALLY. FLAT PANEL. COLOUR DARK GREY - RAL 7016</p> <p>2 COMPOSITE CLADDING PANEL INSTALLED HORIZONTALLY. FLAT PANEL. COLOUR DARK GREY - RAL 7016 WITH 150MM FINS IN MATCHING COLOUR. FINS INSTALLED AT PANELS VERTICAL JOINTS AT 2.5M CENTRES</p> <p>3 ALUMINIUM LOUVRE PANEL SYSTEM - DARK GREY - RAL 7016</p> <p>4 ALUMINIUM LOUVRE SCREEN - COLOUR GREY - RAL 7023</p> <p>5 GLAZED CURTAIN WALL SYSTEM WITH FINS PROTRUDING 150mm FROM EACH MULLION. FRAME COLOUR TO MATCH FIBRE CEMENT CLADDING (GRANITE)</p> <p>6 FIBER-CEMENT CLADDING PANELS WITH VERTICAL GROOVED TEXTURE COLOUR GRANITE</p> <p>7 COMPOSITE CLADDING PANEL INSTALLED VERTICALLY. COLOUR LIGHT GREY - RAL 7035</p> <p>8 ACOUSTIC SCREENING WALL. INSTALLED VERTICALLY COLOUR LIGHT GREY - RAL 7035</p> <p>9 FIBER-CEMENT CLADDING PANELS WITH VERTICAL GROOVED TEXTURE COLOUR ANTHRACITE GREY</p> | <p>10 STAINLESS STEEL WOVEN METAL MESH CLADDING ON STEEL STRUCTURE PAINTED RED. STAIR STRINGERS ALSO PAINTED IN RED COLOUR</p> <p>11 COMPOSITE CLADDING PANEL. FLAT. COLOUR LIGHT GREY - RAL 7035 ALUMINIUM FINS PROTRUDING 150MM IN MATCHING COLOUR. WITH INDIVIDUAL FINS IN RED COLOUR. FINS INSTALLED AT RANDOM PATTERN</p> <p>12 PRESSED METAL CAPPING POWDERCOATED TO COLOUR TO MATCH CLADDING BELOW</p> <p>13 STEEL DOOR POWERCOATED IN RED COLOUR - RAL 7035</p> <p>14 INSULATED ROLLER SHUTTER, COLOUR RAL 7016</p> <p>15 SCREENING WALL, COMPOSITE PANELS WITH MICRORIB PATTERN, INSTALLED VERTICALLY COLOUR LIGHT GREY - RAL 7035</p> <p>16 FIBER-CEMENT CLADDING PANELS, FLAT PANELS COLOUR ANTHRACITE GREY</p> <p>17 ALUMINIUM CLADDING TO CANOPY, POWERCOATED TO RAL 7016, UNDERSIDE IN RED COLOUR</p> <p>18 SINGLE PLY ROOF MEMBRANE IN WHITE COLOUR</p> <p>19 STAINLESS STEEL WOVEN METAL MESH CLADDING ON STEEL STRUCTURE</p> |
|---|---|



Client:

**HAZARD IDENTIFICATION LEGEND:**

HAZARD IDENTIFICATION (if none state 'none relevant')	CONTROL AND MITIGATION MEASURES
DC-04-FFL +93.171m	
DC-03-FFL +91.400m	
DC-02-FFL +90.100m	
DC-01-FFL +80.800m	
DC-0G-FFL +75.500m	

**NOTE:**  
Hazards listed above are only those considered significant risks and:  
a) not likely to be obvious to a competent contractor or other designers;  
b) unusual; or  
c) likely to be difficult to manage effectively

AS PREVIOUSLY PROPOSED  
AMMENDMENTS PROPOSED AT FURTHER INFORMATION STAGE

FURTHER INFORMATION

F02	2021-11-25	Issued for Further Information	NC MB JS
P01	2021-06-16	Issued for Planning	NC MB JS
REV	DATE	DESCRIPTION	DNW CHK APP

Key:

Project: Equinix DB081  
Drawing Title: Proposed Elevations - Sheet 2

Drawing Number: DB081 -RKD -ZZ -ZZ -DR -A -ZZZZ -2201  
Scale: 1:200 Paper Size: A1 Purpose: S4 Revision: P02

59 Northumberland Rd  
Ballsbridge, Dublin 4  
D04 WP88, Ireland

+353 1 668 1056  
mail@rkd.ie  
rkd.ie