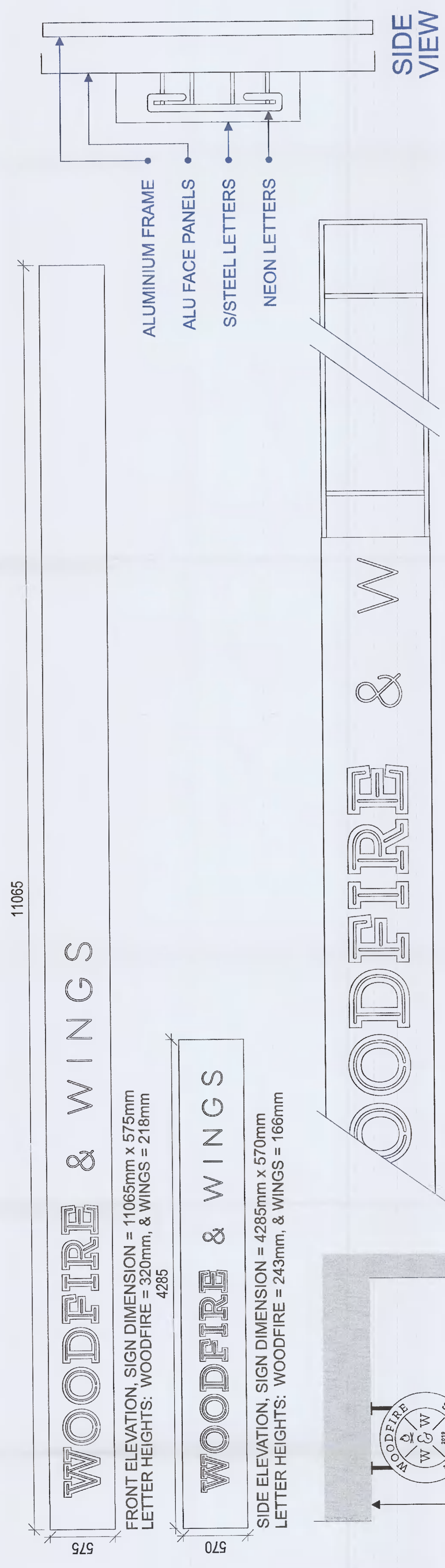


NOTES:  
 FIGURED DIMENSIONS ONLY TO BE TAKEN FROM THIS DRAWING.  
 ALL DIMENSIONS TO BE CHECKED ON SITE PRIOR TO MANUFACTURE.  
 BEFORE WORK COMMENCES THIS DRAWING TO BE READ IN CONJUNCTION WITH  
 STRUCTURAL ENGINEERS, FIRE AND LIFE SAFETY SPECIFICATION,  
 ELECTRICAL SPECIFICATION AND ALL APPLICABLE BUILDING  
 REGULATIONS AND THE SPECIFICATION.



SIGN INFO:  
 ALUMINIUM FACE PANELS FOLDED OVER & SECURED TO ALUMINIUM BOX SECTION FRAME.  
 WOODFIRE LETTERS: FABRICATED IN MIRROR-FINISH STAINLESS STEEL WITH 'OPEN' FACES.  
 10mm WHITE NEON GLASS LETTER SHAPES INSERTED INSIDE S/STEEL LETTERS.  
 '& WINGS' ARE 10mm WHITE NEON LETTERS MOUNTED DIRECTLY TO THE ALU. FACE PANELS.

SUSPENDED SIGN - INFO:  
 DOUBLE-SIDE CIRCULAR BOX FABRICATED IN ALUMINIUM SHEET. WITH OPAL ACRYLIC FACE PANELS  
 DECORATED WITH TRANSLUCENT ADHESIVE VINYL FILM ILLUMINATED BY WHITE LED LIGHT SYSTEM  
 HOUSED WITHIN THE ALUMINIUM CIRCULAR BOX. SIGN IS SUSPENDED ON ALUMINIUM FRAME PAINTED  
 TO SATIN BLACK FINISH.

PHOTO-VISUALS OF PROPOSED SIGNS SUPERIMPOSED OVER INTENDED LOCATIONS.



SIDE ELEVATION.  
 SUSPENDED SIGN  
 800mm DIAMETER.



SIDE ELEVATION, SIGN DIMENSION = 4285mm x 570mm



FRONT ELEVATION, SIGN DIMENSION = 11065mm x 570mm



REV.	DATE	BY	DESCRIPTION

**PLANNING APPLICATION**

PLANNING APPLICATION (P/17) (R)

DATE: 10/11/2025

PROJECT TITLE: UNIT 3, CHANGE OF USE NEW BANGORF CENTRE, TALLAGHT for WOODFIRE AND WINGS LTD.

PROPOSED CHANGE: PROPOSED CHANGE

SCALE: 1/10 @ A4

DATE: 10/11/2025

BY: [Signature]

FOR: [Signature]