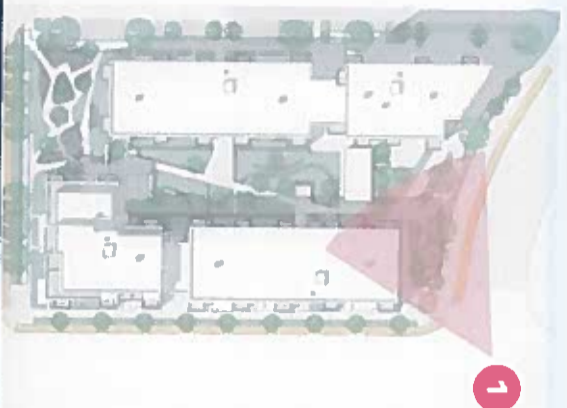


# 04 CGI VIEWS

VIEW 01



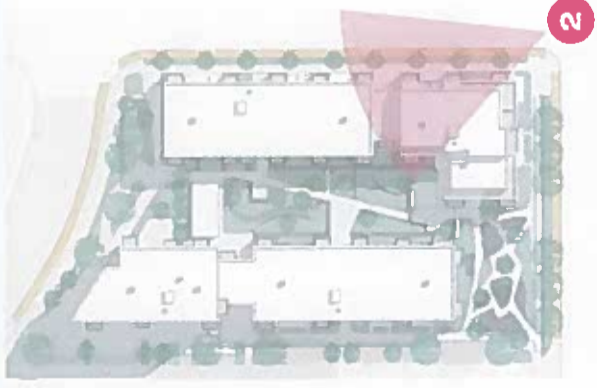
PREVIOUSLY PERMITTED SCHEME



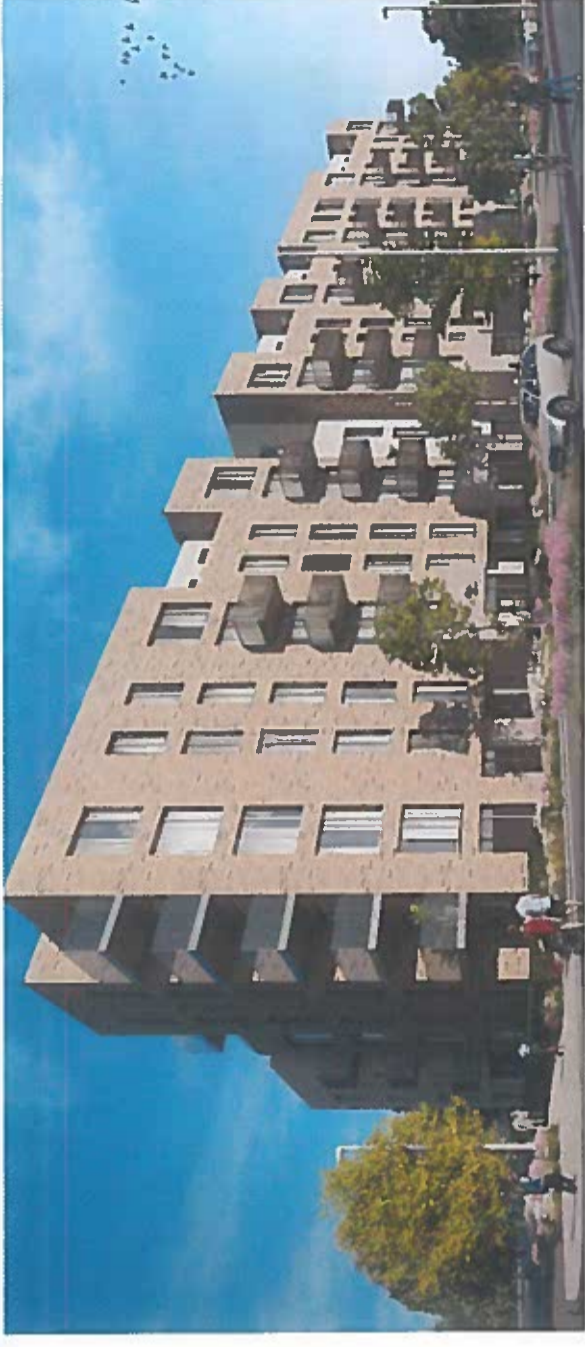


04 CCI VIEWS

VIEW 02



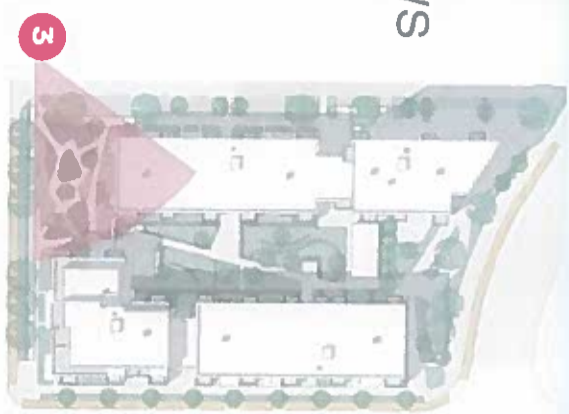
PREVIOUSLY PERMITTED SCHEME  
cc1 - View 2





# 04 CCI VIEWS

## VIEW 03



PREVIOUSLY PERMITTED SCHEME



ADAMSTOWN STATION BLOCK C  
ARCHITECTURE AND INTERIORS 3D VISUALISATIONS / 0301VIEW2-3  
ISSUED FOR PLANNING 13.04.2021



# 04 CGI VIEWS

## VIEW 04



PREVIOUSLY PERMITTED SCHEME

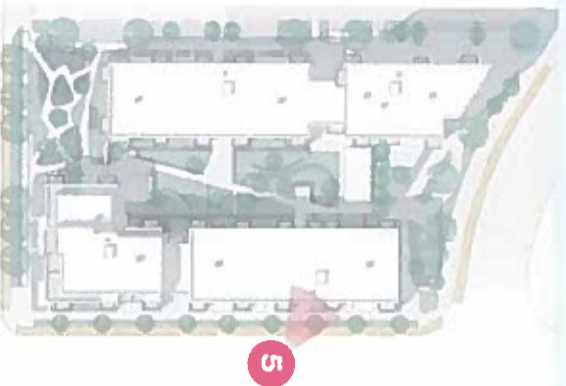
CGI - View 4





04 CCI VIEWS

VIEW 05



PREVIOUSLY PERMITTED SCHEME

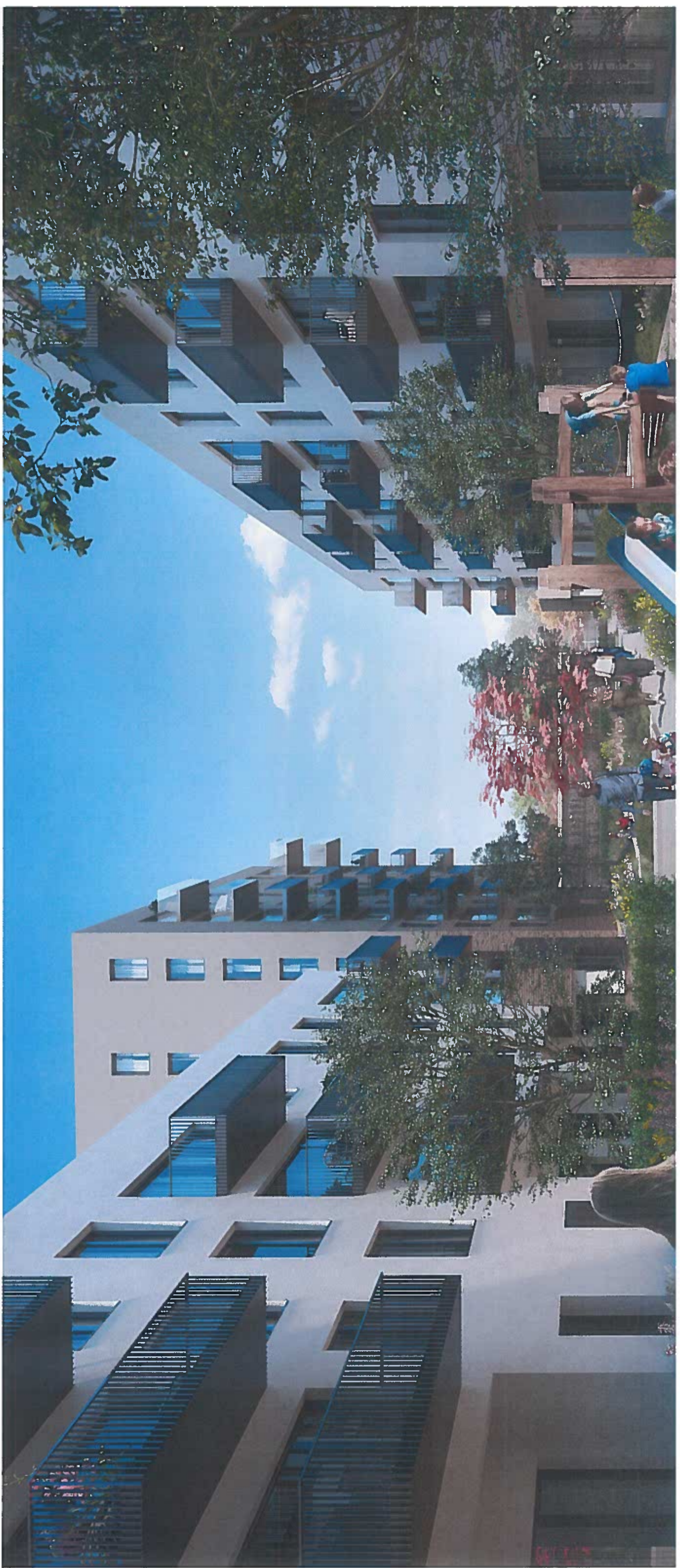
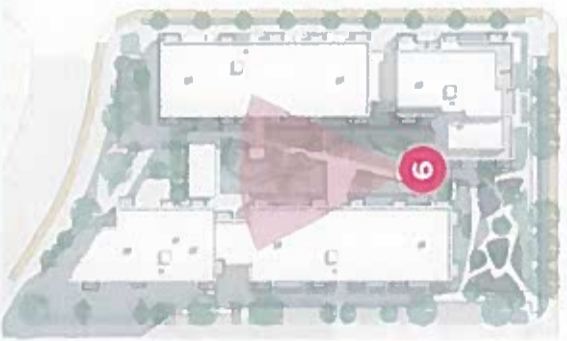


ADAMSTOWN STATION BLOCK C



04 CGI VIEWS

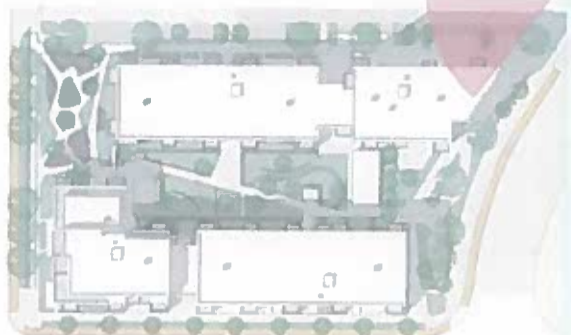
VIEW 06





04 CGI VIEWS

VIEW 07





LANDSCAPE

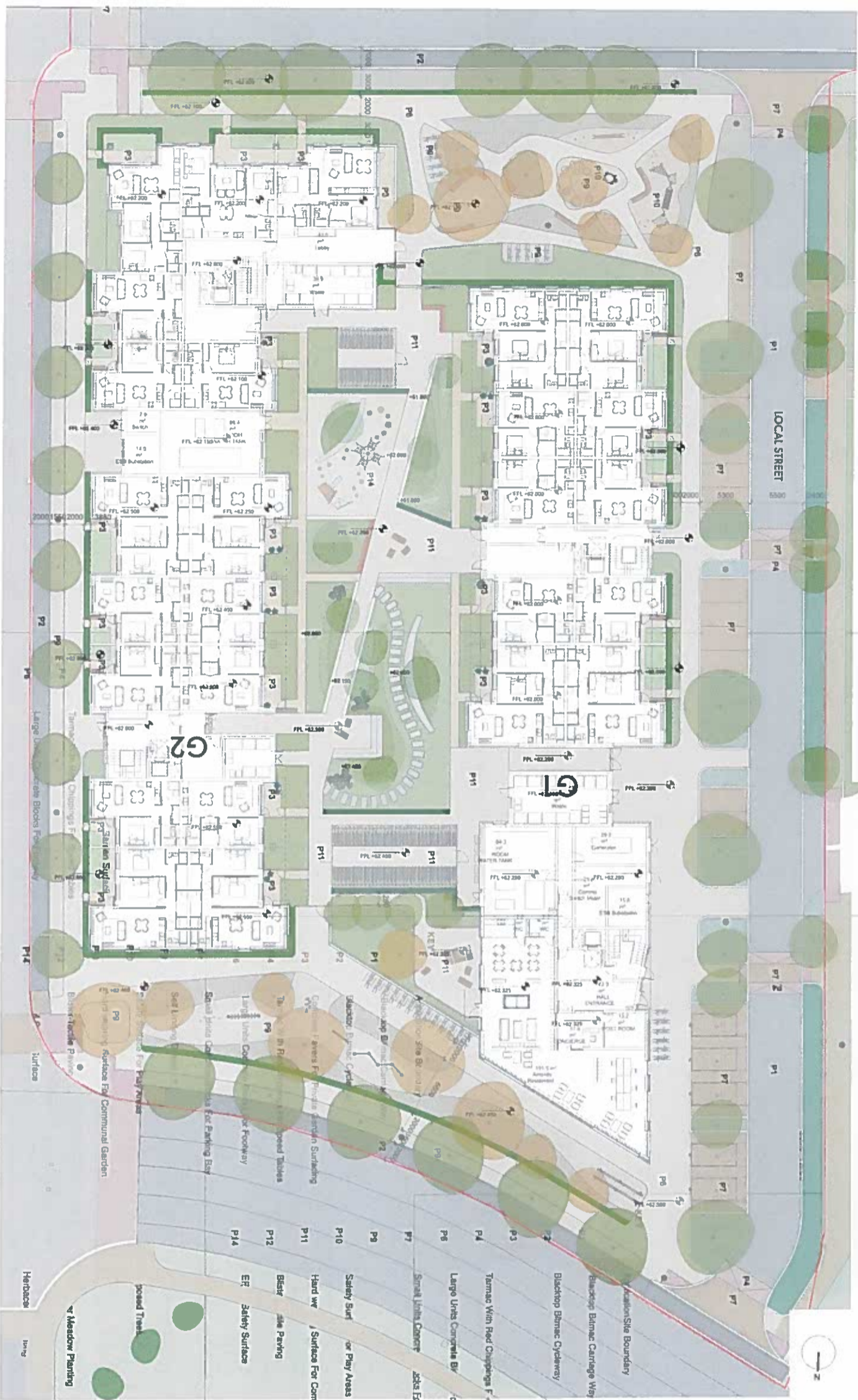
05



# 05 LANDSCAPE

## LANDSCAPE PLAN

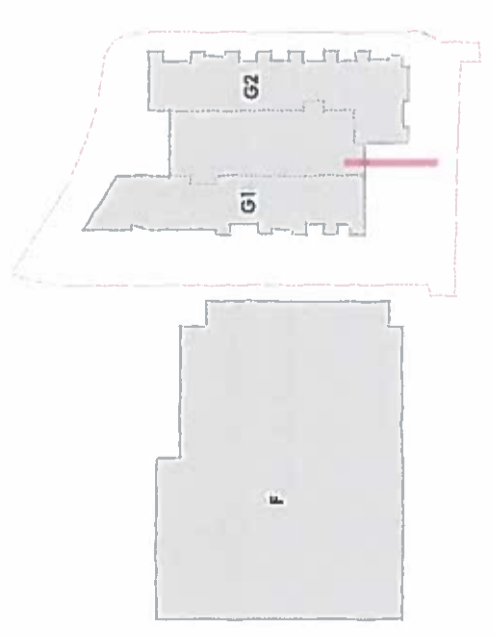
SC EPLAN



KEY	
	Application/Site Boundary
	Blacktop Bitmac Carriage Way
	Blacktop Bitmac Cycleway
	Concrete Pavers For Private Garden Surfacing
	Tarmac With Red Chippings For Speed Tables
	Large Units Concrete Blocks For Footway
	Small Units Concrete Blocks For Parking Bay
	Self Binding Gravel
	Safety Surfaces For Play Areas
	Hard wearing Surfaces For Communal Garden
	Blister Tactile Paving
	EPDM Safety Surfaces
	Carriway/Tactile Paving
	Artificial Grass
	Proposed Trees
	SUDS Planting
	Wildflower Meadow Planting
	Low Maintenance Mixed Shrubs & Seasonal Herbaceous Planting
	Temporary Grass Planting Area for future car parking
	Evergreen Hedge
	Landforms
	Street Lighting Columns Taken In Charge
	Timber Seats to Public Realm
	Play Elements



# O5 LANE



- 1 Secured GF green space planted with evergreen groundcover and shrubs that is open to the car park
- 2 2m high wall to the GF car park
- 3 Public realm green space - South Garden
- 4 Cycle stands for visitors and residents
- 5 Wildflower meadow planting
- 6 Dedicated play equipment
- 7 1.5m hedge for wind mitigation



# 05 LANDSCAPE

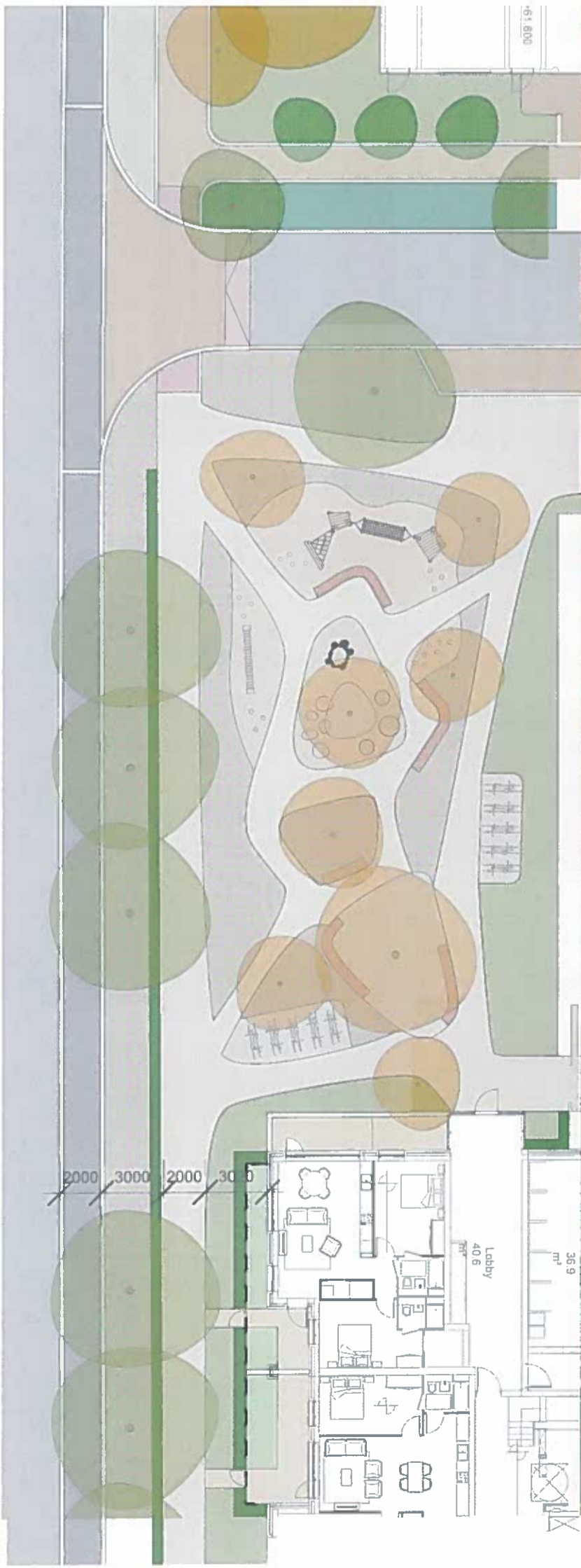
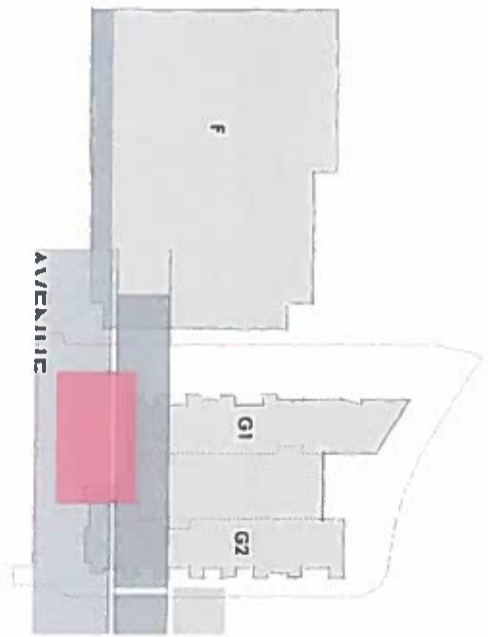
## SOUTH GARDEN

South facing green spaces is an inviting place to stay and interact for visitors and residents of Block G. The space is sheltered with planting and hedge from Adamstown Station road, however it is also visible and well connected to the main pedestrian and cycling networks.

The south garden is well overlooked from the podium level and apartments that creates passive surveillance.

The garden includes dedicated play equipment for children, seating and a possible space for surface water attenuation.

This green space will act as the main gateway into the scheme from Station Road (the bus stop and train station).



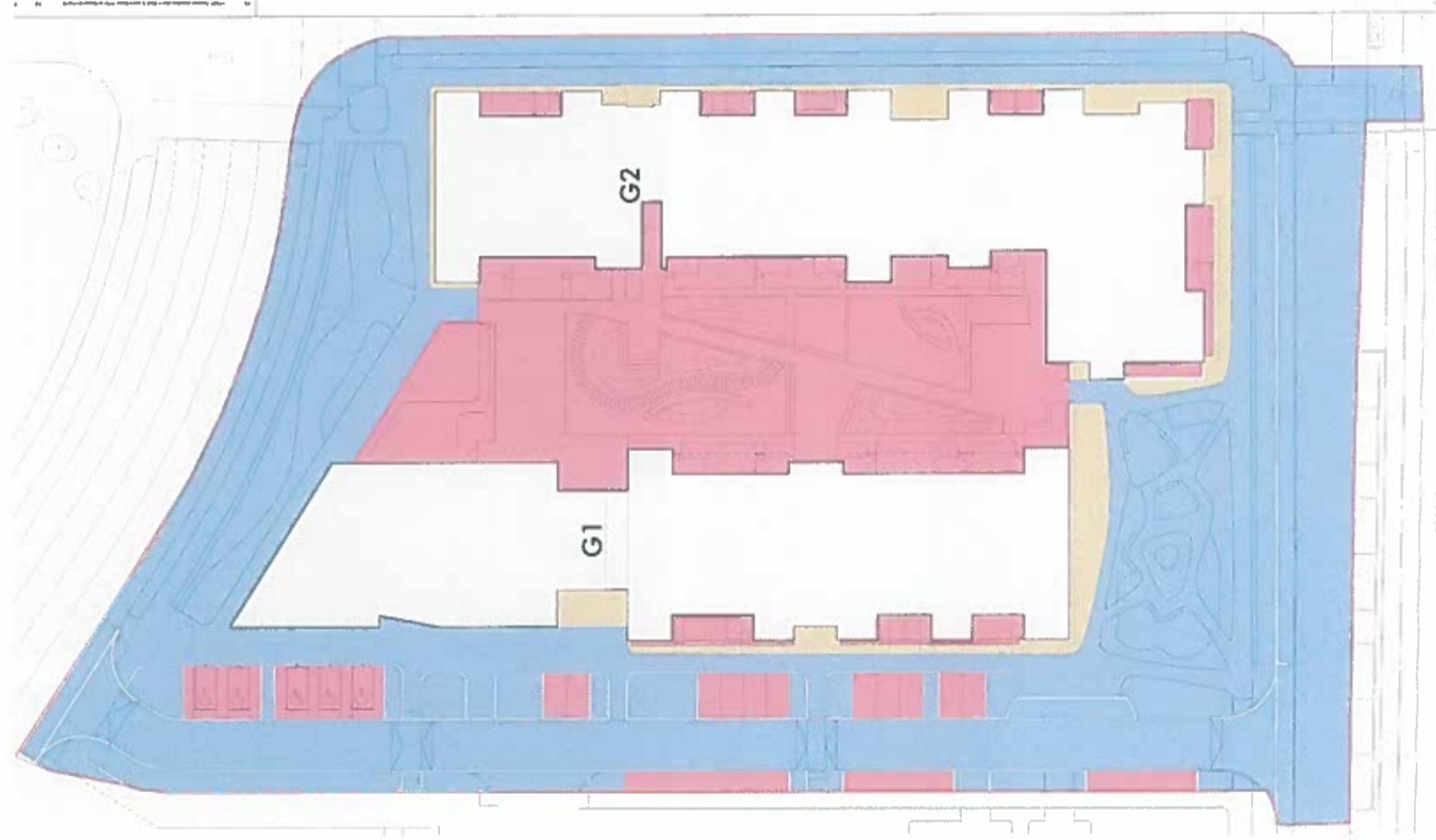


# 05 LANDSCAPE

## MANAGEMENT PRINCIPLES

### Taken In Charge

The areas proposed to be taken in charge include the Adamstown Avenue, Station Avenue, Adamstown Park Road, Local Street and green spaces to the north and south of Block G. These areas have been selected to ensure they are contiguous, to assist the City Council in their management, and prevent any island areas which could cause access issues.

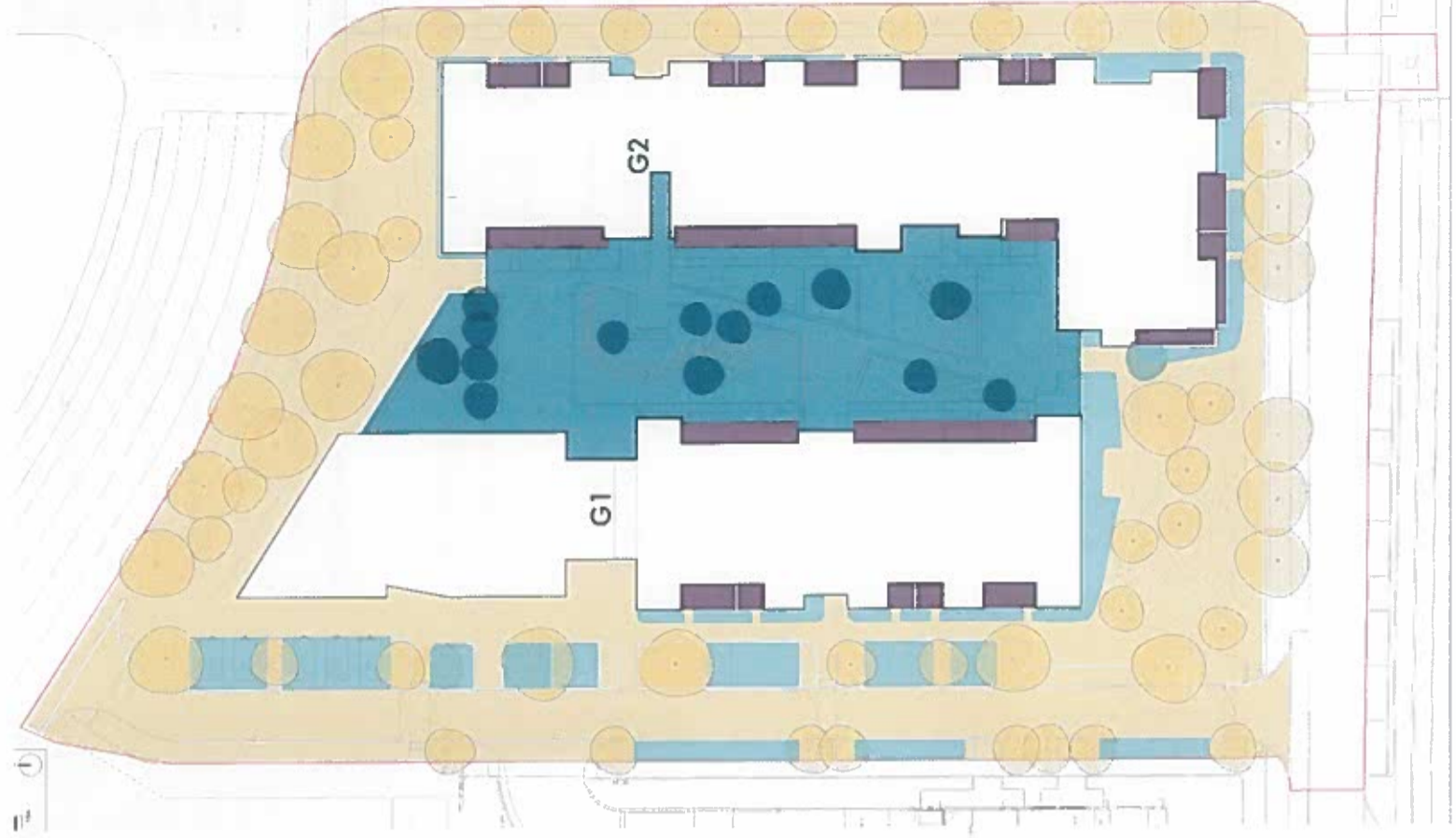


### Management and Maintenance

Careful consideration has been given to who will be responsible for the maintenance and management of all external spaces. The adjacent diagram differentiates each of the different managers involved.

The principal pedestrian and vehicle traffic corridors is proposed to be maintained by local council and designed to minimise the maintenance burden by using materials that are hardwearing and easy to replace.

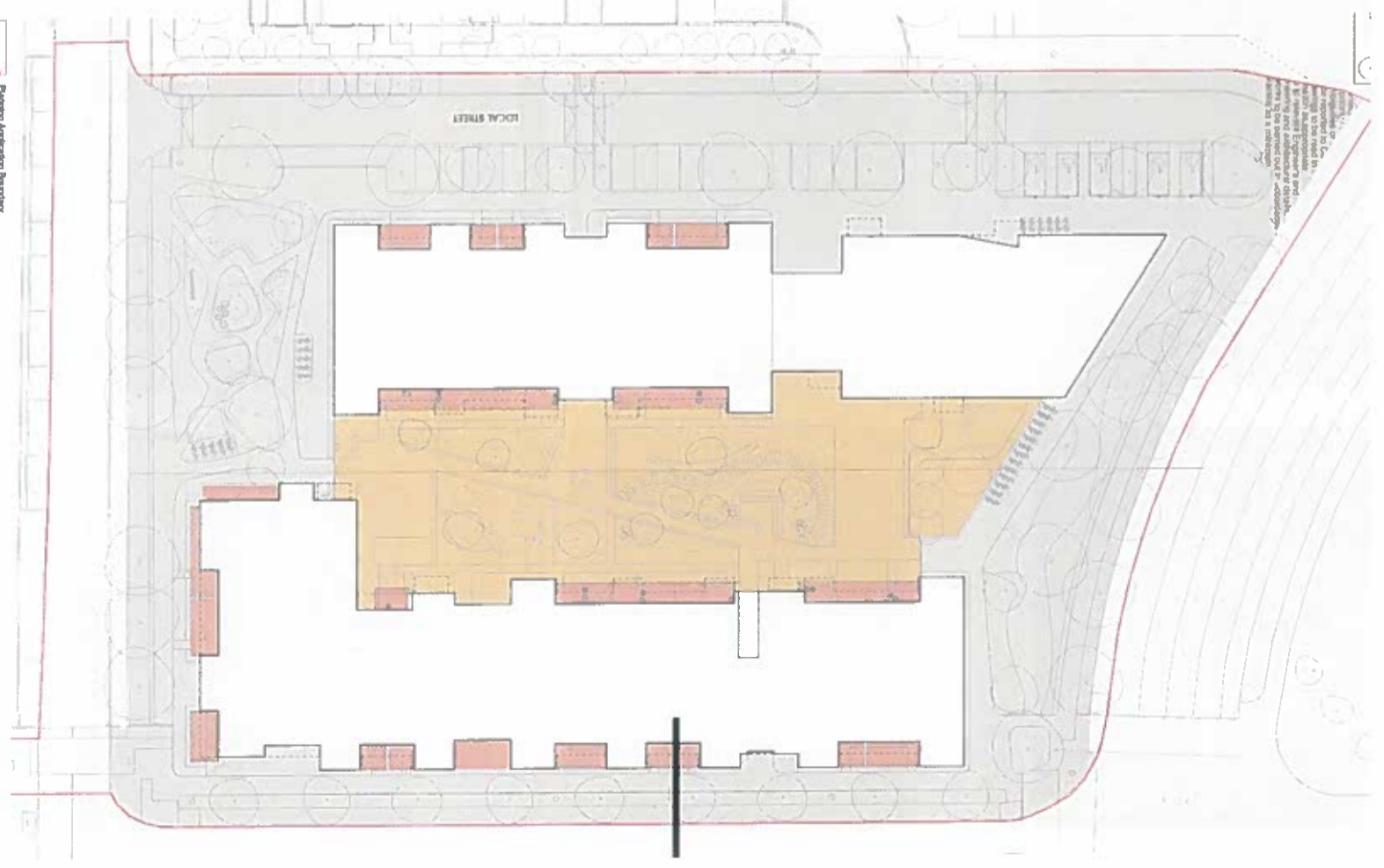
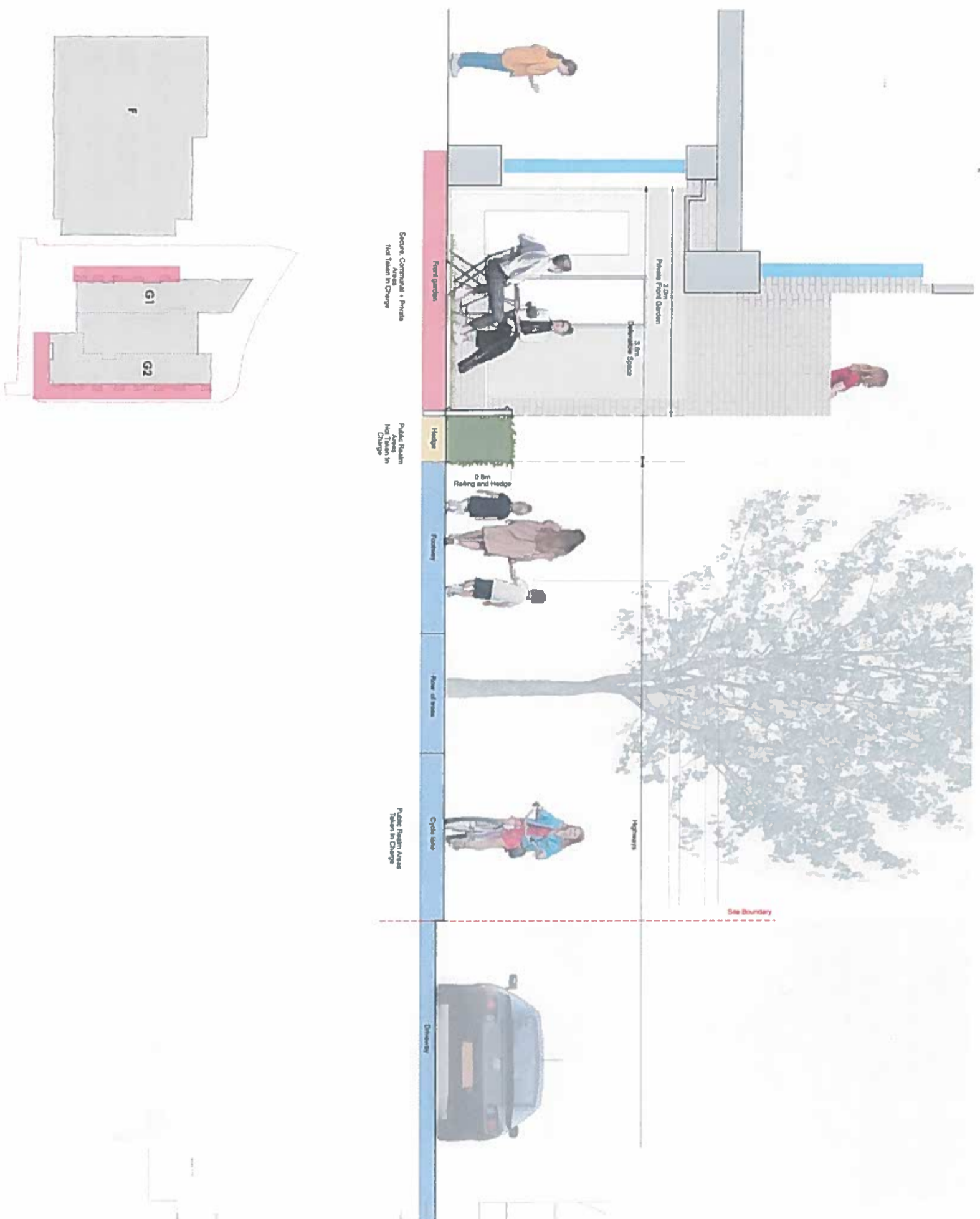
A selected management company is responsible for upkeep and maintenance of green and defensible space adjacent to the residential block. There should be appropriate financial provision for future maintenance and revenue costs.





# 05 LANDSCAPE

## PUBLIC AND PRIVATE SPACE INTERCHANGE



- Secure ownership + Private not taken in charge
- Public realm not taken in charge
- Footway
- Highway
- Planning Application Boundary
- Public realm accessible 24/7



# 05 LANDSCAPE

## PUBLIC REALM DETAIL - MATERIALITY



Bitmac Carriageway Surface



Bitmac With Red Chippings



Bitmac Cycleway Surface



Concrete Blocks Footway



Concrete Blocks For Parking Bay



Brushed Concrete For Crossing



Concrete Blister Tactile Paving



Concrete Corduroy Tactile Paving



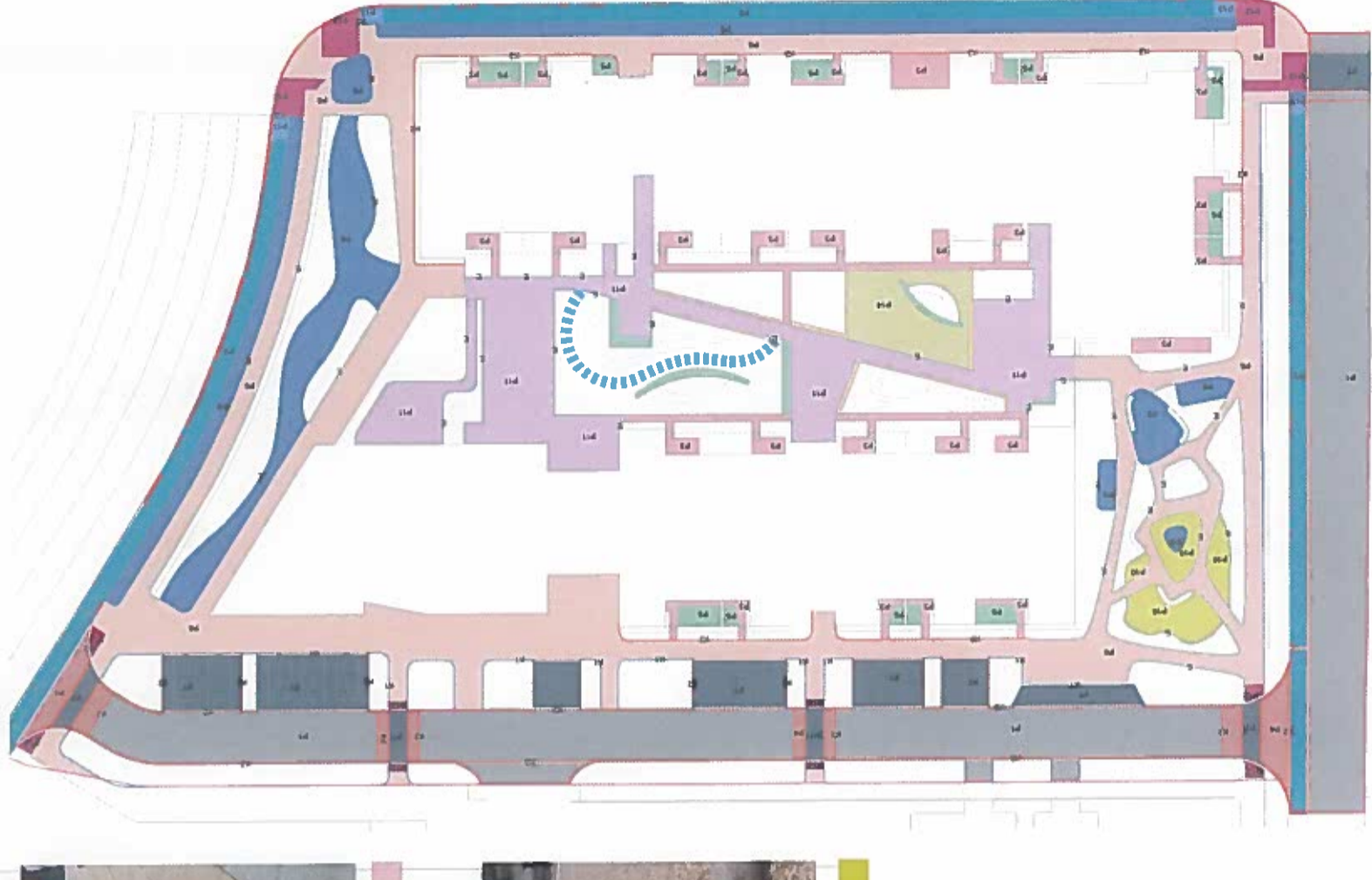
Self Binding Gravel



Textured Coloured Concrete Flags



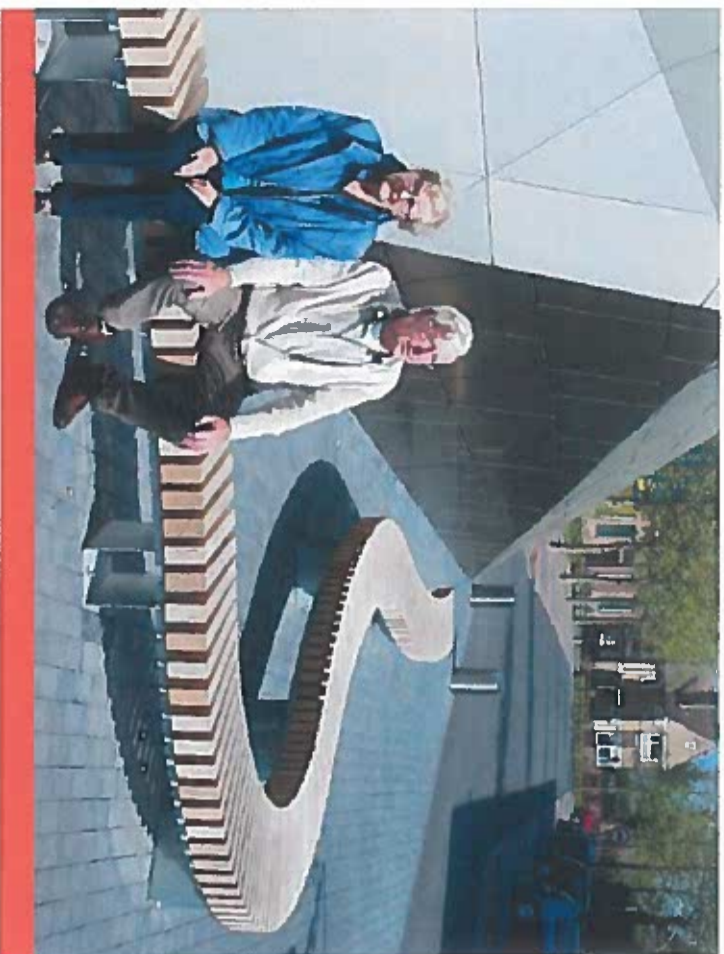
Engineered Woodchip





# 05 LANDSCAPE

## PUBLIC REALM DETAIL - FURNITURE



Curved Timber Bench



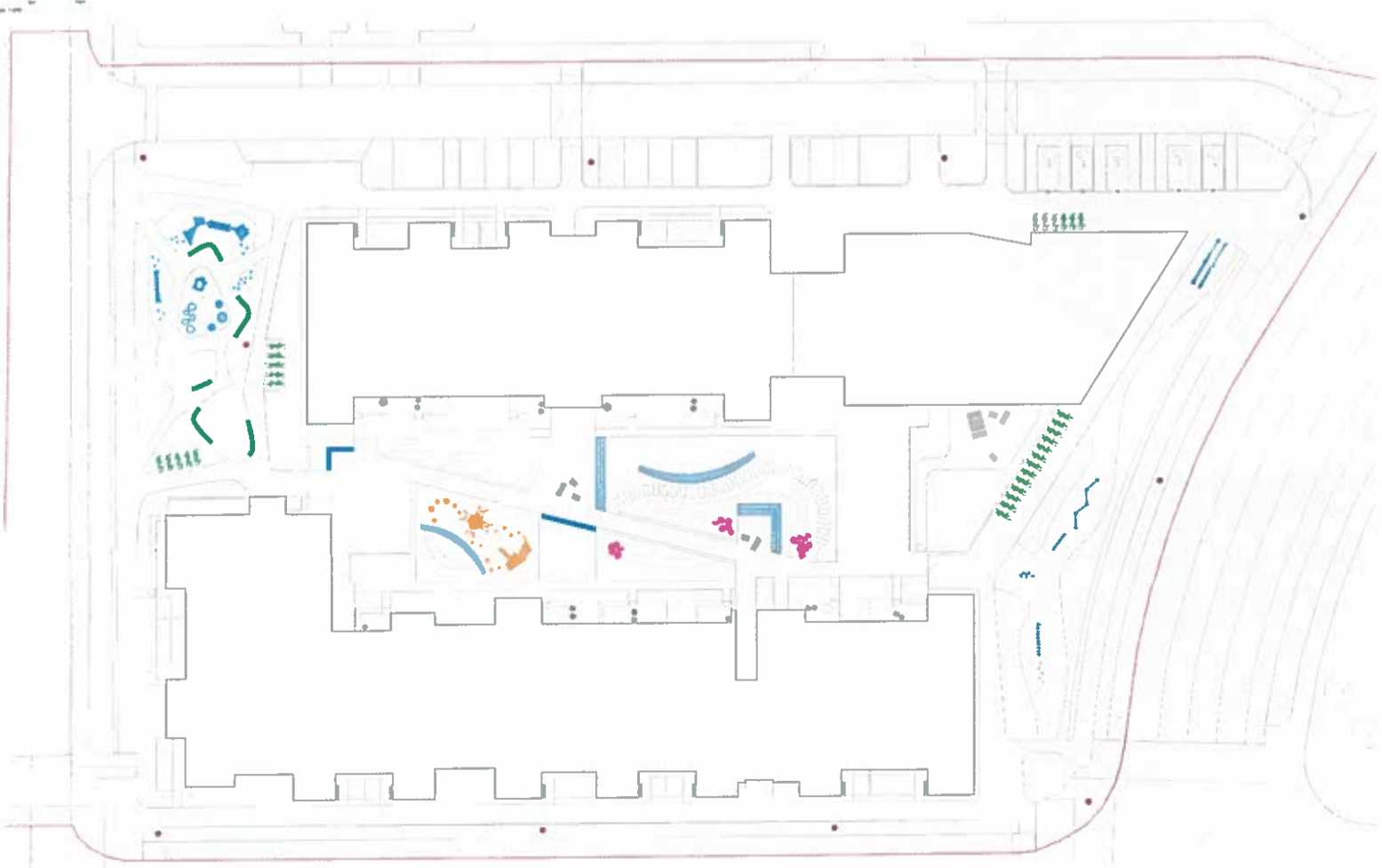
Timber Seat With Backrest And Armrest



Sheffield Cycle Stands



Sheffield cycle stands with variation in height for informal play for the Pocket Park





# 05 LANDSCAPE

## PUBLIC REALM DETAIL - TREES



Corylus colurna



Platanus x acerifolia



Prunus avium

Large Urban Tree 5-8m



Acer campestre



Pyrus calleryana 'Chanticleer'



Sorbus intermedia

Medium Street Tree 3-5m



Malus sylvestris



Acer campestre



Pinus sylvestris

Compact Street Tree 2-3m



Acer ginnala

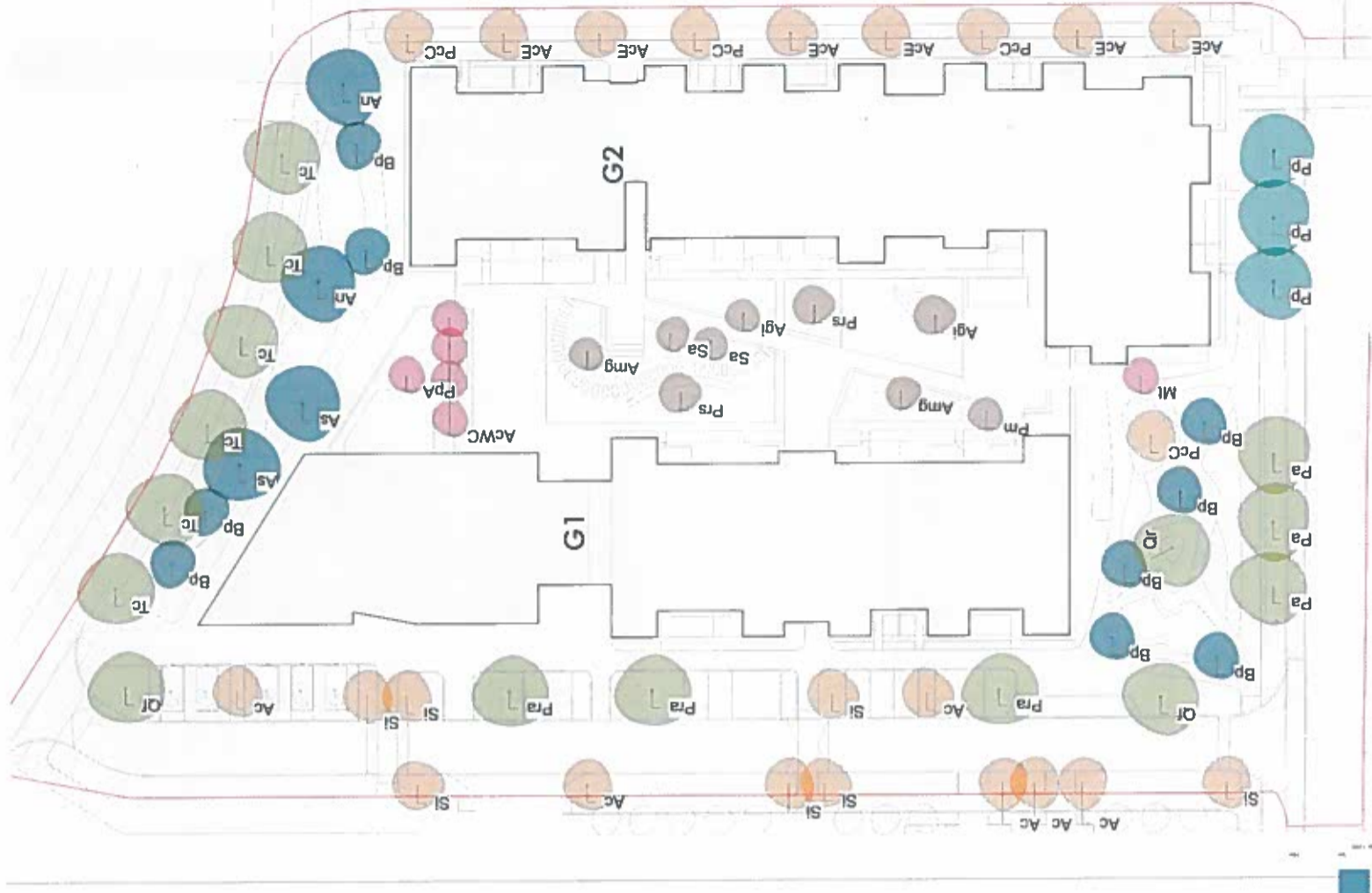


Betula pendula



Populus tremula

Swale Trees



The proposed trees shall be a mixture of 18-20cm, 20-25cm and 30-35cm resourced from Irish Grown Nursery Stock. For specification refer to Drawing LL591-150-0041 - GA Proposed Tree Planting Plan.



# 05 LANDSCAPE

## PUBLIC REALM DETAIL - LOW LEVEL PLANTING



Blend of native wildflowers and grasses suitable for attenuating swales



Biodiverse wildflower and grasses planting mixture suitable for SUDS



Public realm biodiverse wildflower planting



Woodland-edge herbaceous and shrub planting with seasonal interest

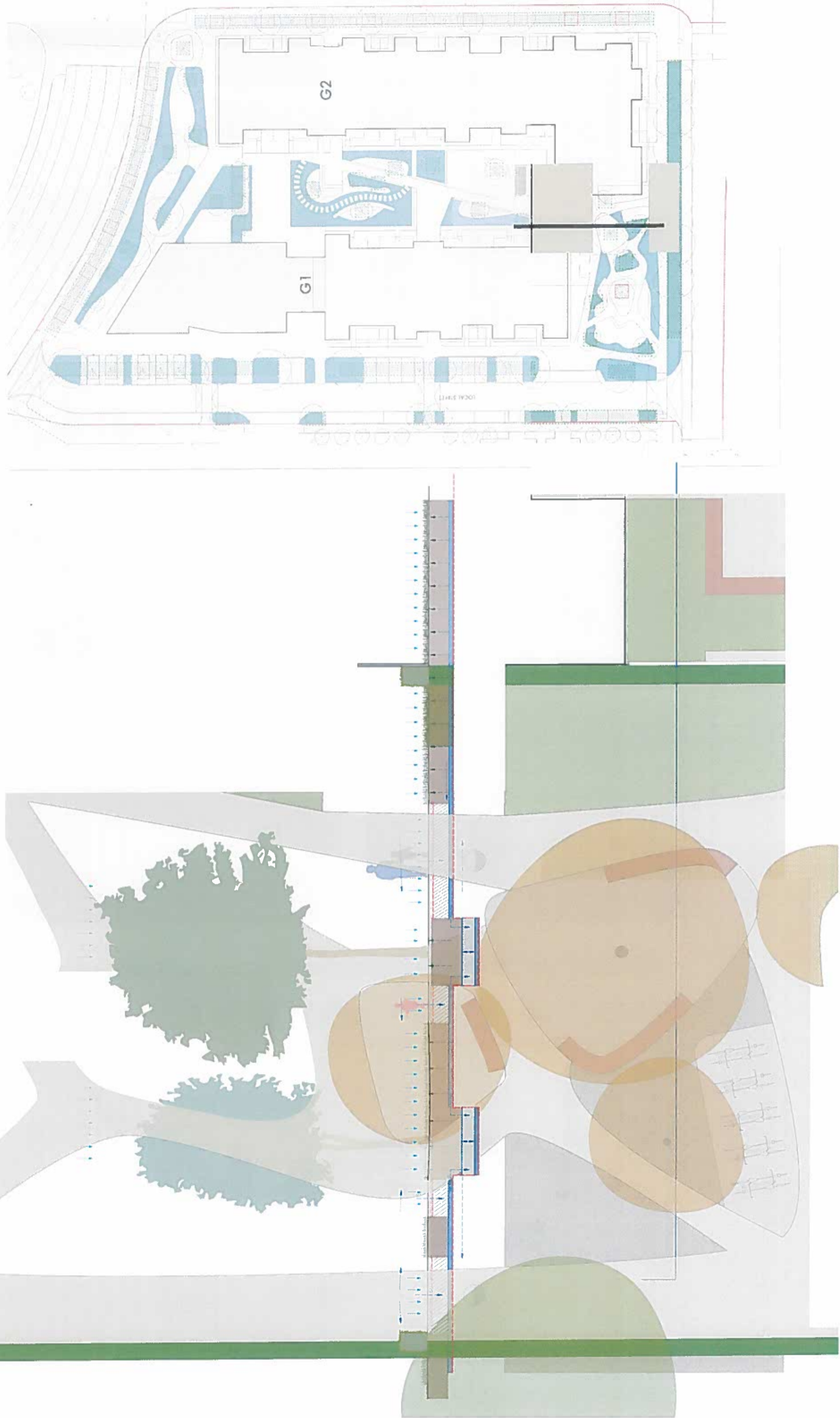




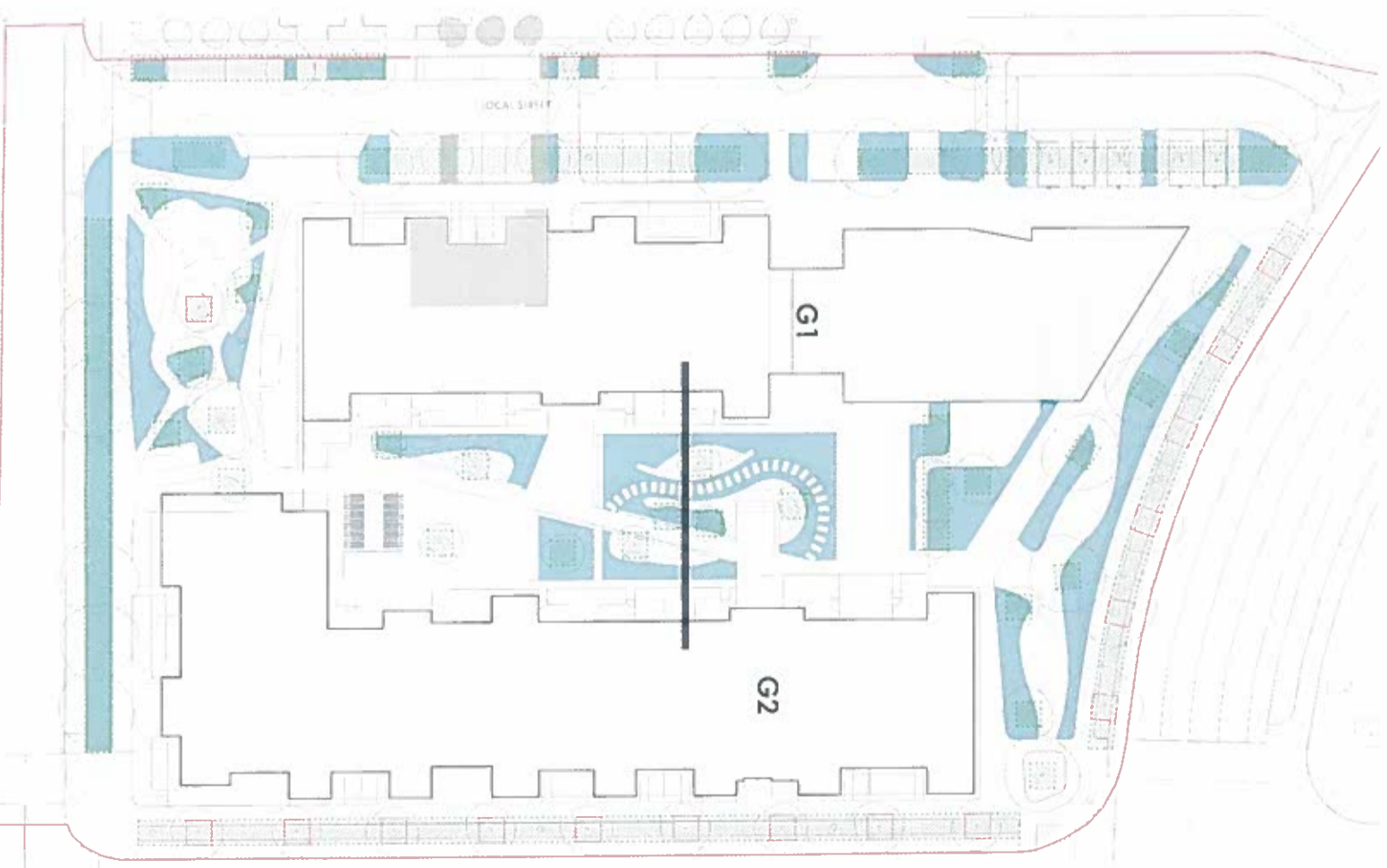
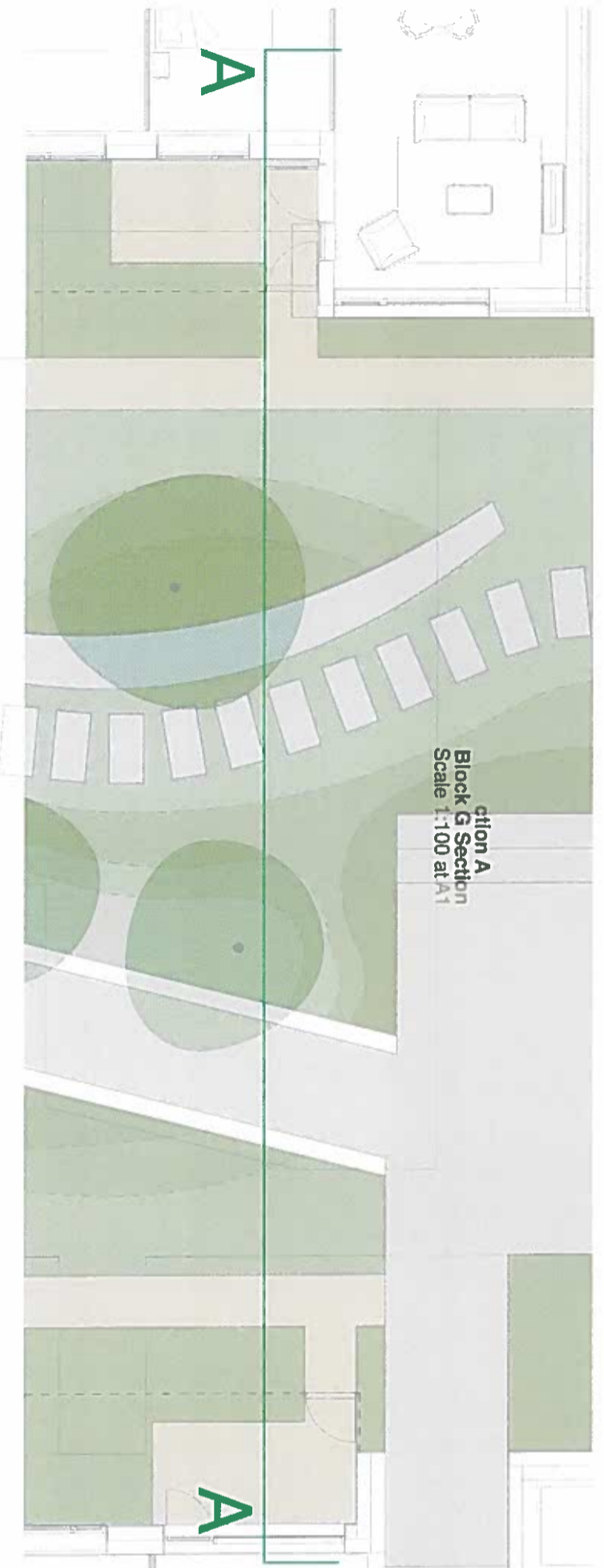
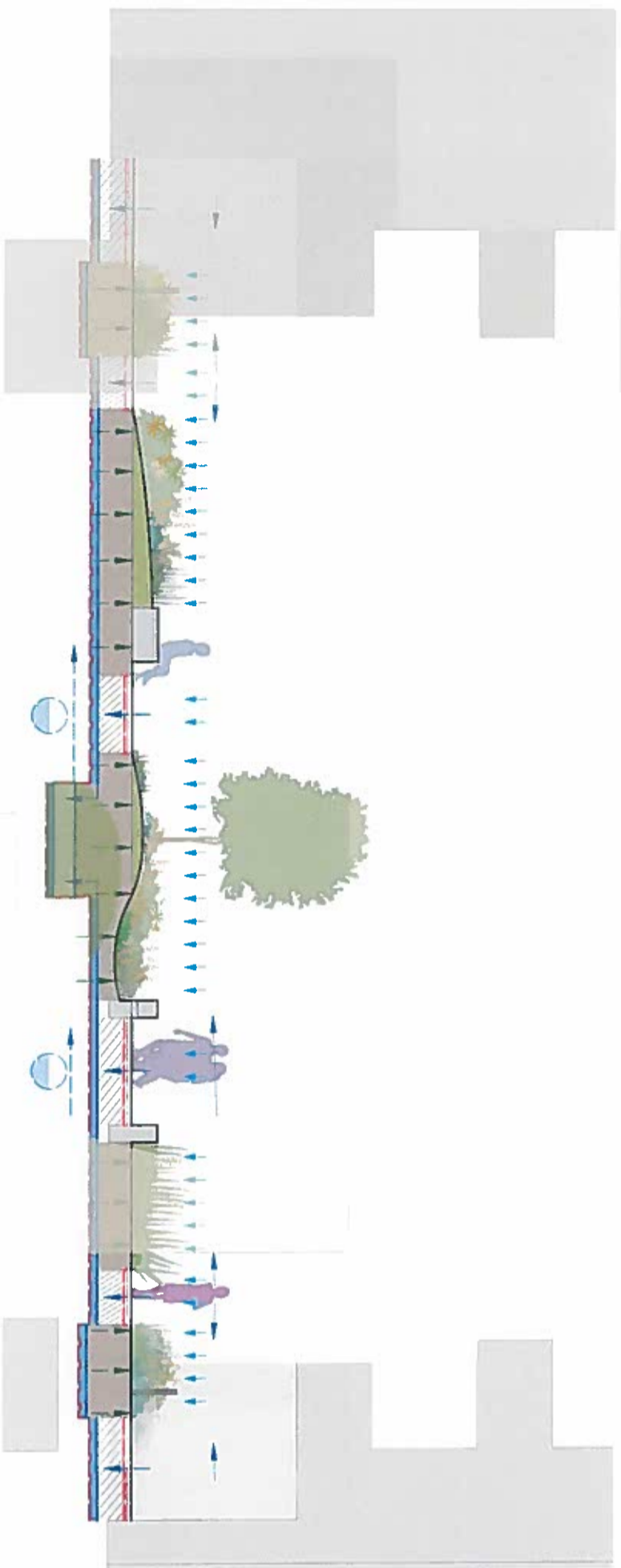
# LANDSCAPE

## SUNSHINE OPPORTUNITIES

Sheet 1.02









# 05 LANDSCAPE

## COMMUNAL AND PRIVATE SPACE INTERCHANGE

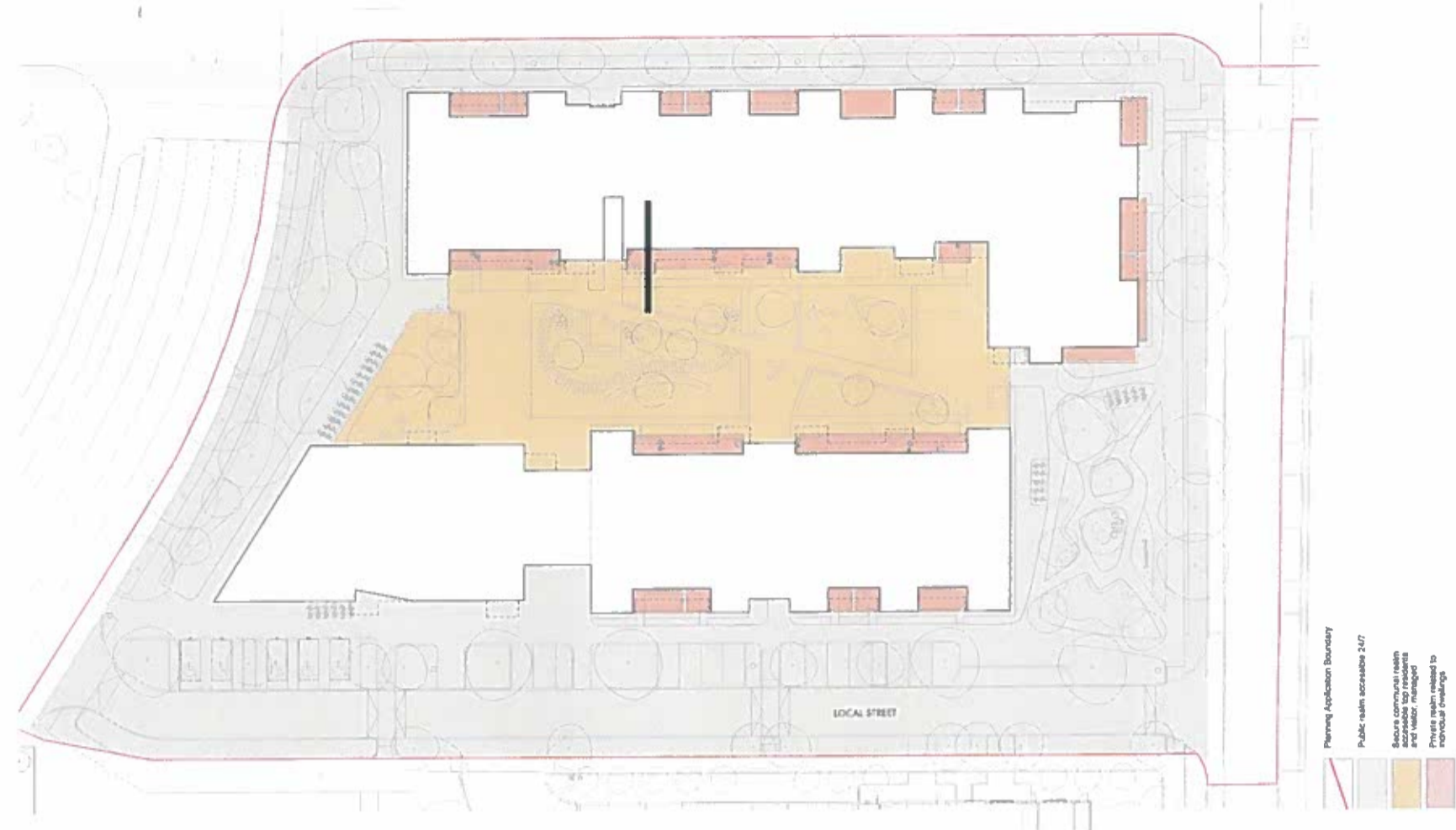
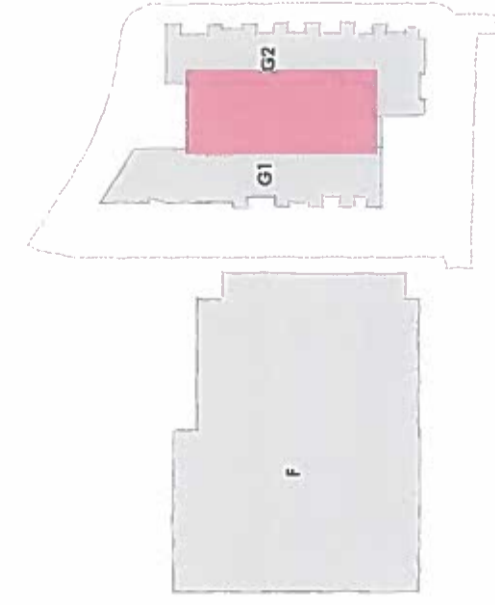
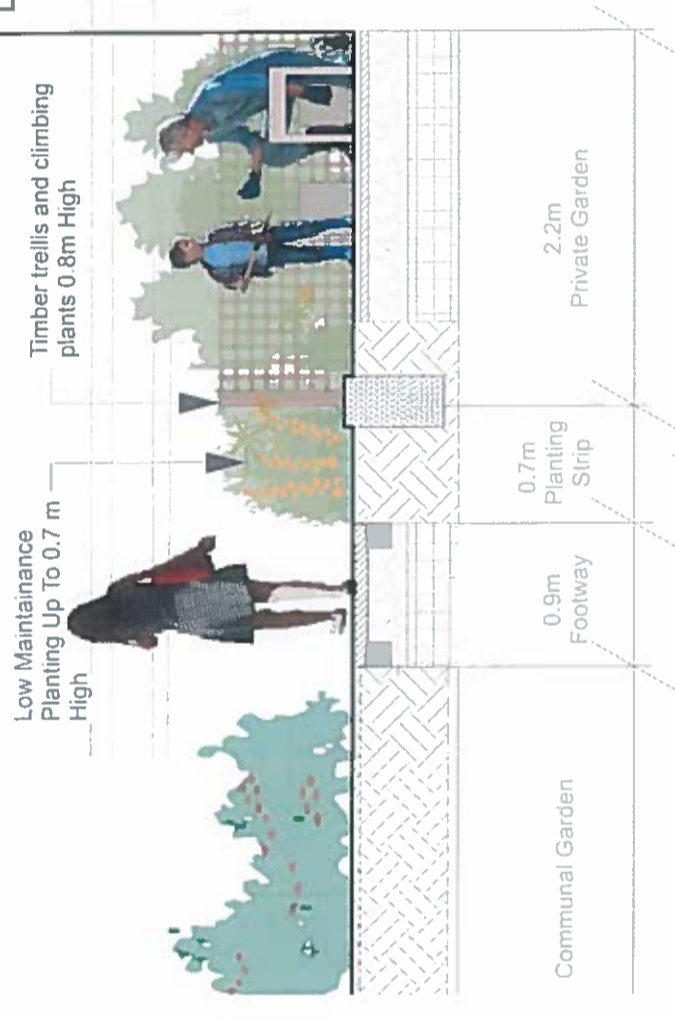
3,000mm  
Open  
500mm  
Scale 1:20

### Communal And Private Open Spaces

The communal gardens are designed to meet requirements for communal spaces and provide viable space for private back gardens.

The communal path is set back from the private gardens and separated by planted borders and mesh fencing. The edge planting consists of an evergreen shrubs, climbers and mixed herbaceous planting to provide privacy.

## BLOCK G



- Planning Application Boundary
- Public realm accessions 2.0/7
- Secure communal realm accessions for residents and visitors
- Private realm accessions to individual dwellings



# 05 LANDSCAPE

## COMMUNAL SPACE DETAIL - MATERIALITY



Resin Bound Surfacing



Concrete Stepping Stones



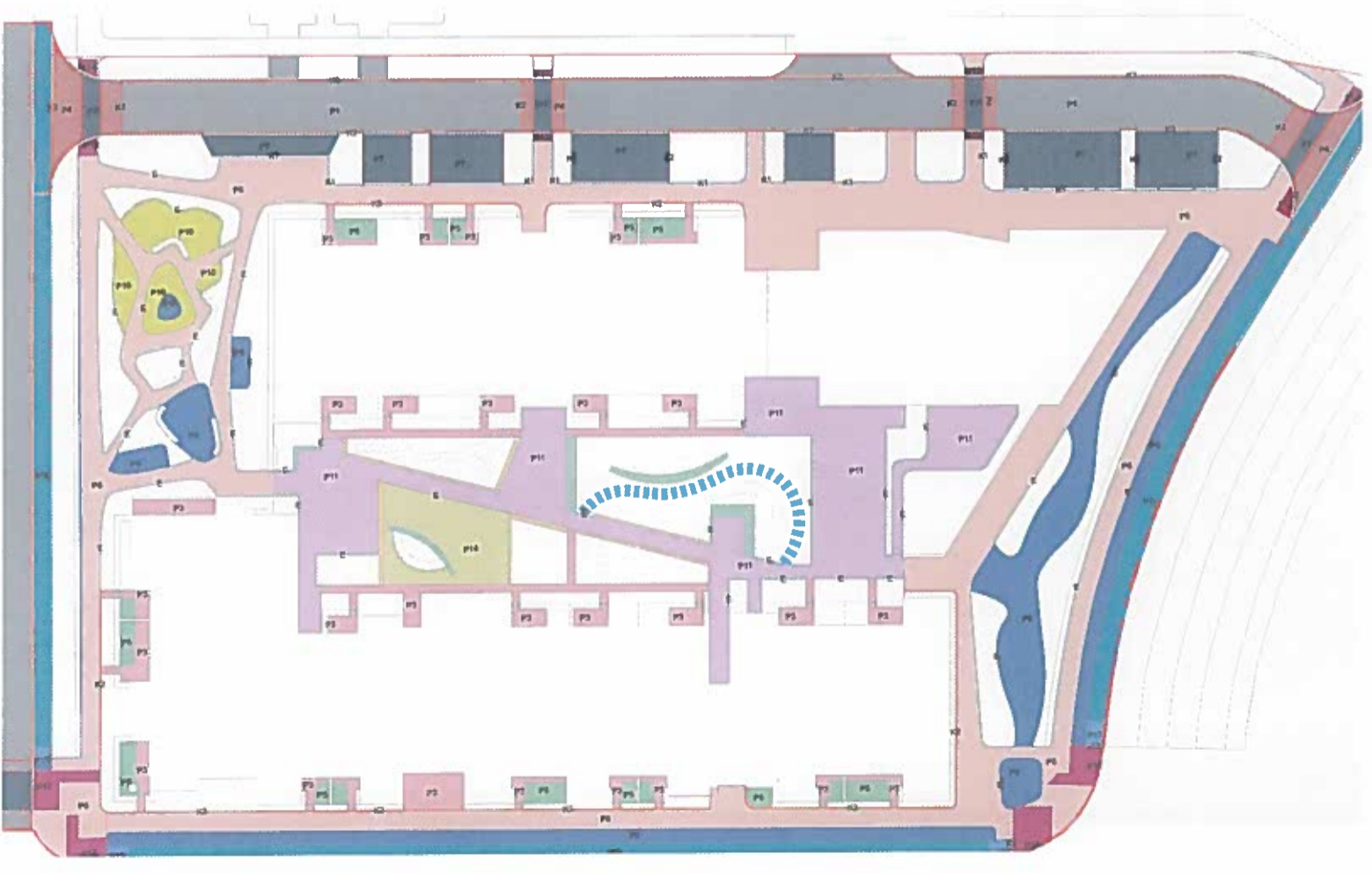
EPDM



Textured Concrete Flags



Textured Concrete Finish For All Concrete Structures





# 05 LANDSCAPE

## COMMUNAL SPACE DETAIL - FURNITURE



Concrete Terraces With Timber Top



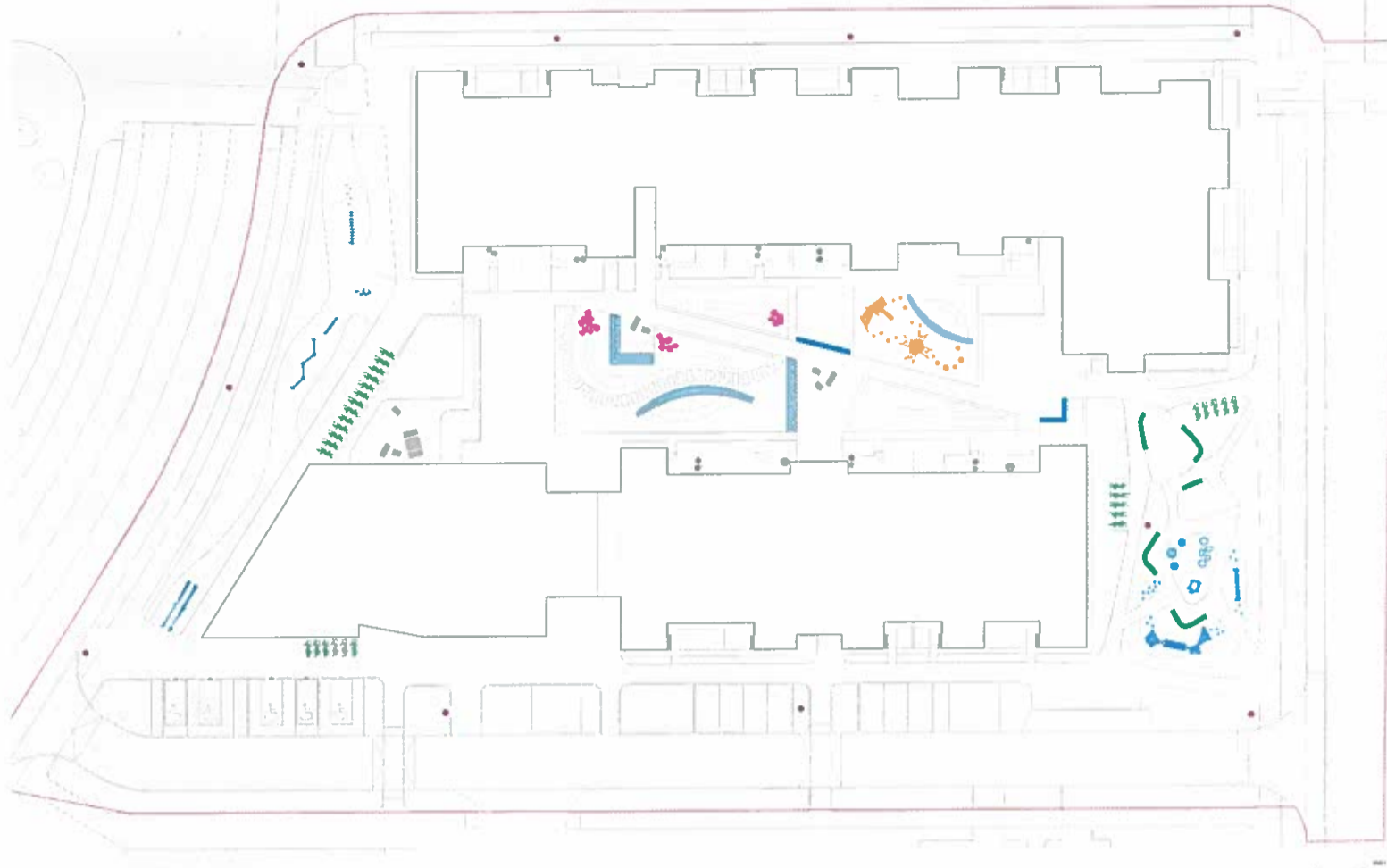
Wall-Mounted Timber Seat



Concrete Arch Seat



Timber Pergola With Planter





# 05 LANDSCAPE

## COMMUNAL SPACE DETAIL - TREES



*Acer ginnala*



*Amelanchier x grandiflora*



*Prunus subhirtella*



*Sorbus aucuparia*



*Sorbus aucuparia*



*Pinus mugo*

Domestic Size Tree 4-6m



*Prunus padus 'Albertii'*



*Acer campestre 'William Caldwell'*

Compact Street Tree 2-3m



The proposed trees shall be a mixture of 18-20cm, 20-25cm and 30-35cm resourced from Irish Grown Nursery Stock. For specification refer to Drawing LL591-150-0041 - GA Proposed Tree Planting Plan.



# 05 LANDSCAPE

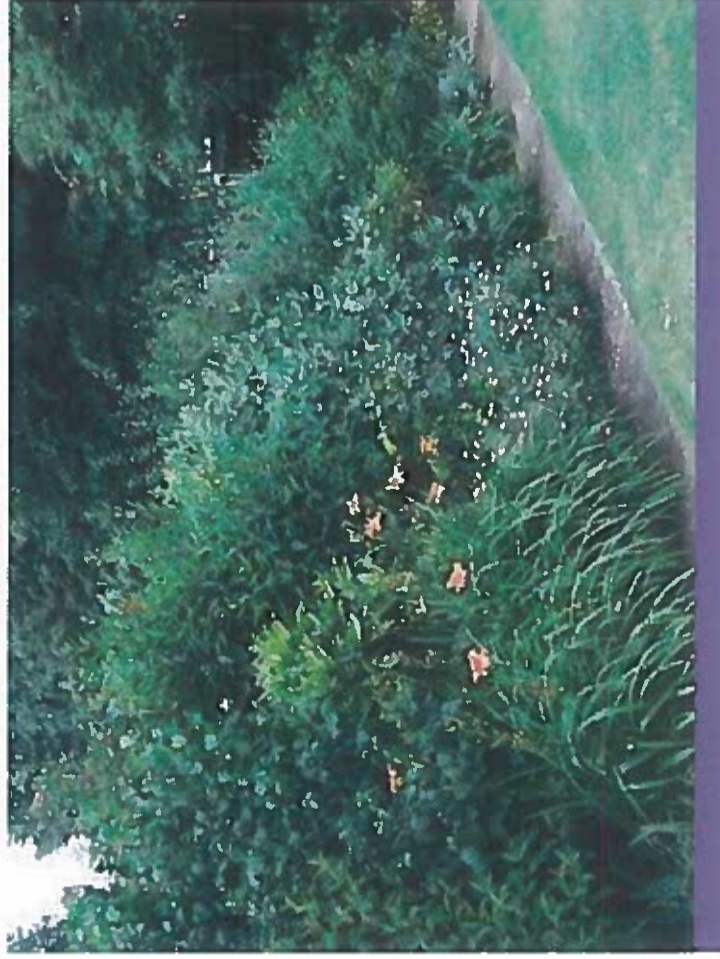
## COMMUNAL SPACE DETAIL - LOW LEVEL PLANTING



Low maintenance ornamental planting



Planting for boundary treatment and screening to private gardens



Taller planting for wind mitigation



Woodland-edge herbaceous and shrub planting with seasonal interest





# 05 LANDSCAPE

## PLAY AREAS



**Doorstep Playable Space - 0 to 5 years**

These will be play features for under 5s with the possibility of unsupervised play. The play equipment will provide activities that involve climbing, imitation, and dramatic play, like activity panels, slides, climbers, sandboxes. These will be mainly located within building courtyards.



**Youth Space - 12+ years**

Spaces and facilities that allow for fitness activities



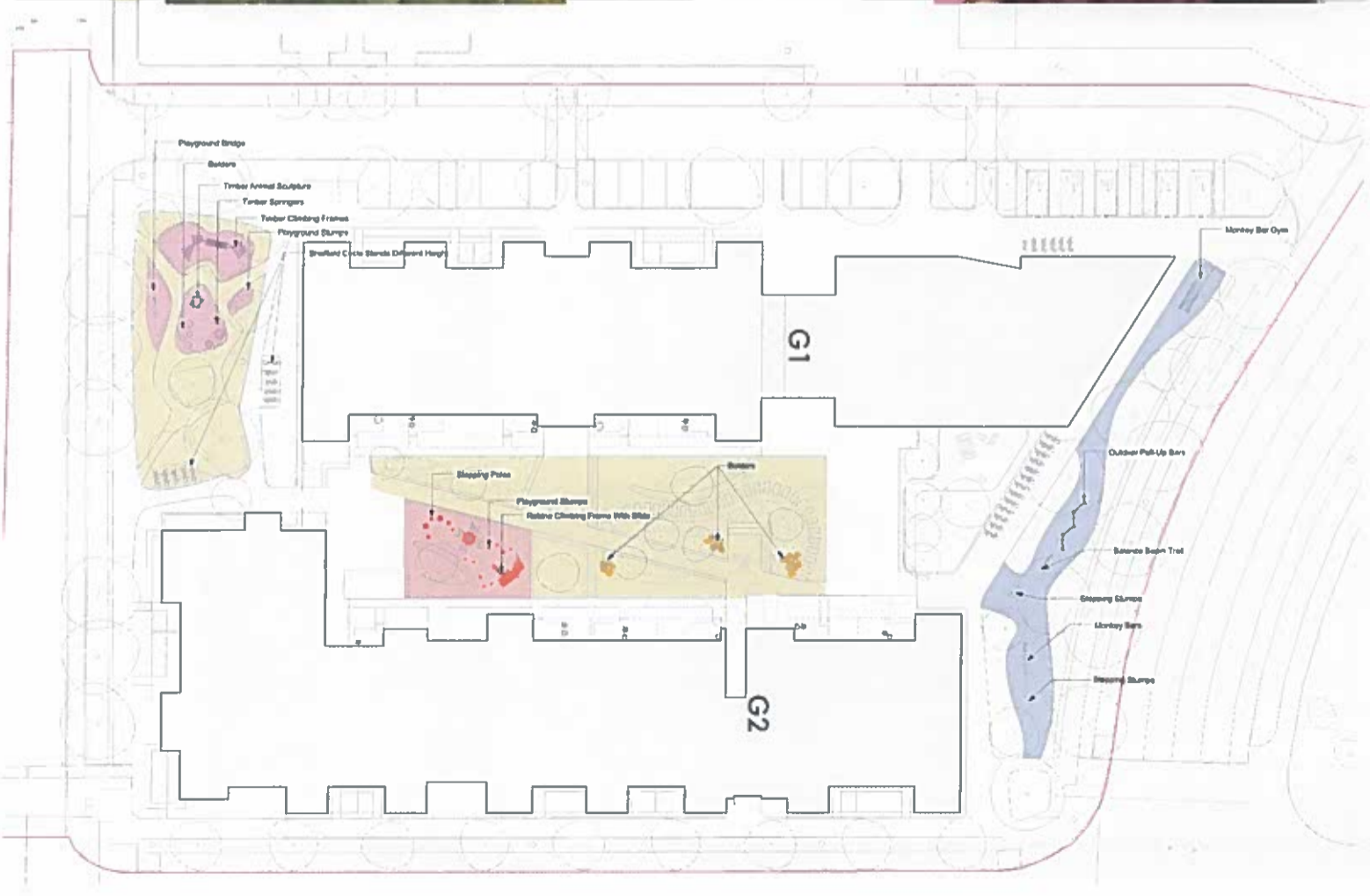
**Local Playable Space - 5 to 12 years**

These will include play equipment design for this specific age group, such as climbable and balancing objects, landforms; elements for imaginative play, as well as places to sit and talk.



**Playable Space - All Ages**

The proposed green space includes mounds and natural boulders that can be explored by children of different ages encouraging adventurous and imaginative





# DAYLIGHT ANALYSIS

06



## 06 DAYLIGHT ANALYSIS

### SUNLIGHT STUDY (OCSC)

hieved.

OCSC carried out an assessment of the proposed open spaces to assess sunlight levels achieved. Refer to OCSC information for detailed daylight analysis.

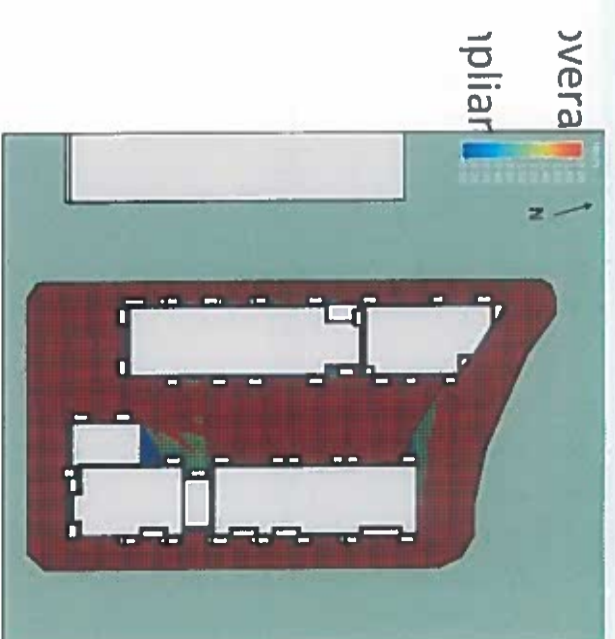
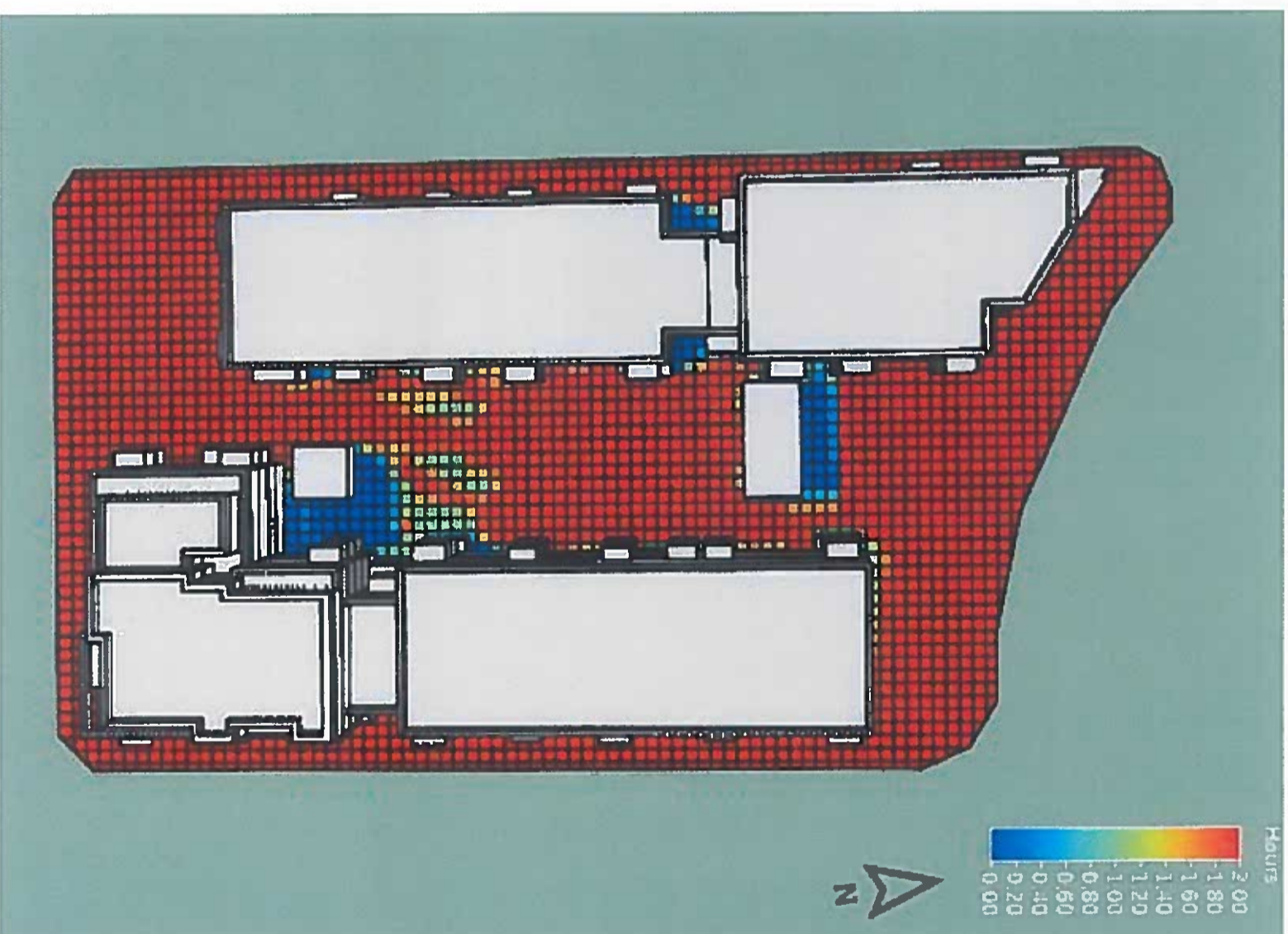
#### Sunlight Requirements

BRE Guidelines state that at least 50% of an amenity space should receive at least 2 hours of sunlight on March 21st.

#### Sunlight Results

The results provide similar sunlight levels to the permitted scheme. This image outlines the sunlight analysis undertaken on the amenity spaces being provided. The red squares denote the areas that are receiving 2 or more hours of sunlight on March 21st.

The sunlight results illustrate that the majority of open space provided achieves 2 hours or more of direct sunlight on March 21st, therefore excellent levels of sunlight will be received and compliance with BRE Guidelines will be achieved.



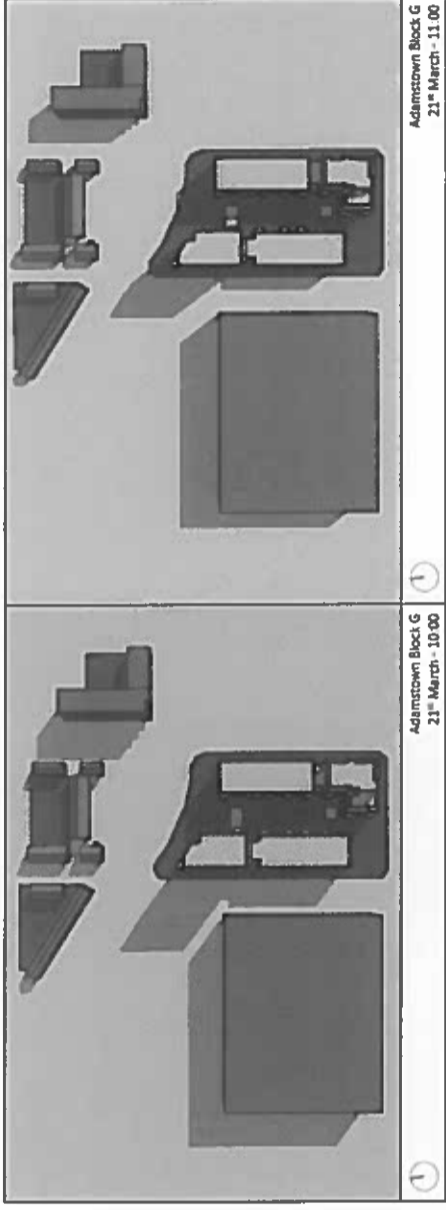
#### PREMISES MAINTENANCE

The excellent daylight and sunlight access can also be attributed to the sunlight building facades that have been carefully designed with light materials, thus creating desirable spaces for the residents.



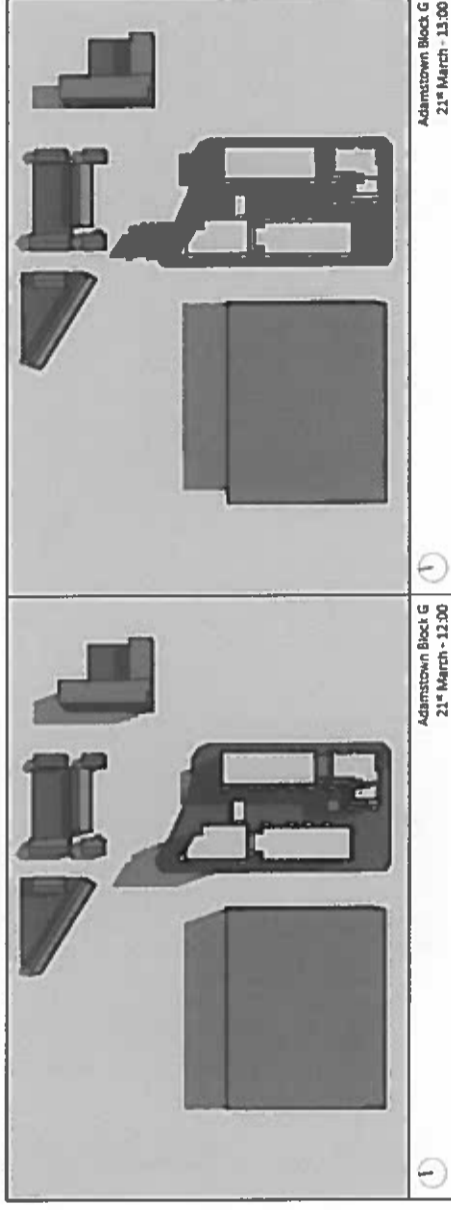
# 06 DAYLIGHT ANALYSIS

## SHADOW STUDY (OCSC)



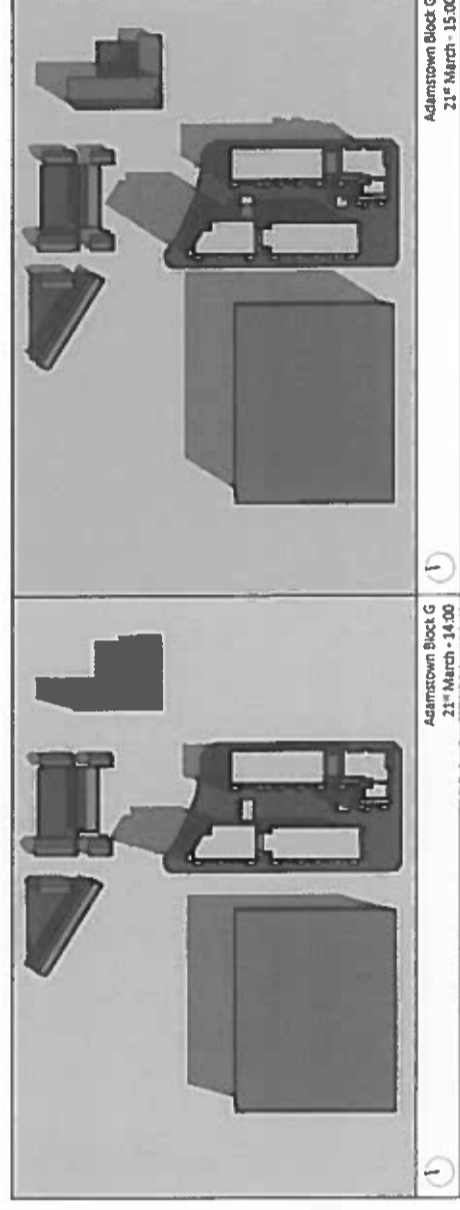
21st March - 10:00

21st March - 11:00



21st March - 12:00

21st March - 13:00



21st March - 14:00

21st March - 15:00



# APPENDICES

# 07



ALL DIMENSIONS TO BE CHECKED ON  
NO DIMENSIONS TO BE SCALED FROM  
DRAWING IS TO BE READ IN CONJUNCTION

# 07 APPENDICES

## PART V PROVISION

- 10% of the development, or 18 apartments, will be allocated as Part V under the *Planning and Development Act 2000*
- It is proposed to provide these apartments across the first, second and third floors of Block G1.

54\_ApartmentGroups\_HOA\_Part 5\_Sheet View

Block	Level	Unit No.	Unit Type	No. of Bedrooms	Total Apt Area	Req. Apt Area	Aspect	Orientation	Part V
G1	LEVEL 01G	G1S.101	T.103_A.1	49.6	45.0	45.0	SINGLE	W	Yes
G1	LEVEL 01G	G1S.102	T.202_A.2	80.3	73.0	73.0	DUAL	NW	Yes
G1	LEVEL 01G	G1S.103	T.202_A.2	80.3	73.0	73.0	SINGLE	E	Yes
G1	LEVEL 01G	G1S.104	T.204_A.2	74.6	73.0	73.0	SINGLE	E	Yes
G1	LEVEL 01G	G1S.105	T.201_A.2	63.9	63.0	63.0	SINGLE	E	Yes
G1	LEVEL 01G	G1S.106	T.103_A.1	49.6	45.0	45.0	SINGLE	E	Yes
G1	LEVEL 01G	G1S.107	T.202_A.2	80.3	73.0	73.0	DUAL	S/E	Yes
G1	LEVEL 01G	G1S.108	T.202_A.2	80.3	73.0	73.0	DUAL	SW	Yes
G1	LEVEL 01G	G1S.109	T.103_A.1	49.6	45.0	45.0	SINGLE	W	Yes
G1	LEVEL 01G	G1S.110	T.103_A.1	49.6	45.0	45.0	SINGLE	W	Yes
LEVEL 01G : 10				658.2					
G1	LEVEL 02G	G1S.202	T.202_A.2	80.3	73.0	73.0	DUAL	NW	Yes
G1	LEVEL 02G	G1S.203	T.202_A.2	80.3	73.0	73.0	SINGLE	E	Yes
G1	LEVEL 02G	G1S.204	T.204_A.2	74.6	73.0	73.0	SINGLE	E	Yes
G1	LEVEL 02G	G1S.205	T.201_A.2	63.9	63.0	63.0	SINGLE	E	Yes
G1	LEVEL 02G	G1S.206	T.103_A.1	49.6	45.0	45.0	SINGLE	E	Yes
G1	LEVEL 02G	G1S.207	T.202_A.2	80.3	73.0	73.0	DUAL	S/E	Yes
G1	LEVEL 02G	G1S.208	T.202_A.2	80.3	73.0	73.0	DUAL	SW	Yes
G1	LEVEL 02G	G1S.209	T.103_A.1	49.6	45.0	45.0	SINGLE	W	Yes
LEVEL 02G : 8				559.0					
G1: 18				1217.2					
Grand Total : 18				1217.2					
Permitted = 18				1114.4					



FIRST FLOOR PLAN



SECOND FLOOR PLAN



# 07 APPENDICES

## SUMMARY SCHEDULE

RESIDENTIAL ACCOMMODATION			
LEVEL	By Block		Qty
	G1	G2	
FLOOR AREA (avg)			
Level	0	10	16
Level	1	17	19
Level	2	17	19
Level	3	17	19
Level	4	6	17
Level	5	6	5
Level	6	6	0
Level	7	5	0
Level	8	5	0
<b>TOTAL</b>	<b>Un.</b>	<b>89</b>	<b>95</b>
Internal Nett Area			11,968

UNIT MIX				
	Qty	%	Dual Aspect	Avg Area sqm.
Studio Units	0	0%	0	0
1B Units	83	45%	10	49.5
2B Units (3P)	11	6%	4	65.3
2B Units (4P)	88	48%	68	78.9
3B Units	2	1%	2	198
<b>Total</b>	<b>184</b>	<b>100%</b>	<b>84</b>	<b>11,968</b>

UNIT MIX - MIN. APT AREAS V PLUS 10%				
	Min. size	Plus 10%	% (min 51%)	
Studio Units	0	0	0%	
1B Units	15	68	37%	
2B Units (3P)	11	0	0%	
2B Units (4P)	42	46	25%	
3B Units	2	0	0%	
<b>Total</b>	<b>70</b>	<b>114</b>	<b>62%</b>	

Part V Allocation		
	Count	% of O/A
Studio Units	0	0%
1B Units	6	3%
2B Units	12	7%
3B Units	0	0%
<b>Total</b>	<b>18</b>	<b>10%</b>

SUMMARY OF AREAS			
RESIDENTIAL NETT	sqm		11,968
RESIDENTIAL GROSS	sqm		14,754
NETT TO GROSS RESIDENTIAL		81%	
Ancillary (GF cores)	sqm		
Resident Amenities	sqm		240
Plant	sqm		383
Waste stores & compactors	sqm		111
Subtotal GFA (excl. Bicycle store)	sqm		15,488
CARPARK	sqm		
Bicycle store	sqm		121
<b>TOTAL (incl. Bicycle store)</b>	<b>sqm</b>		<b>15,609</b>

INDICATORS			
PLOT RATIO	GIA	Site area	=
DENSITY	15,488	10,544	1.47
	184	1.05	=
			175 (un/Ha.)

CARPARKING					
	Standard	U.A.	e-car	Subtotal	PROVIDED
On street allocation	11	5		16	
Block F allocation	67		9	76	
<b>Totals</b>	<b>78</b>	<b>5</b>	<b>9</b>	<b>92</b>	<b>92</b>
Ratio					50%

BICYCLE PARKING			
Requirement: 1 per unit	Residents 1x	184	Visitors 20%
PROVIDED SPACES			Subtotal
On street allocation		40	
Level 0 (Communal Garden)	184		224

OPEN SPACE			
	Required	Provided	
OS1 Private Open Space	sqm.	1,115	1,389
OS2a Communal Amenity Open Space	sqm.	1,115	1,366
OS2b Other Communal Open Space	sqm.		644
OS3 Public Open Space	sqm.		1,263

## SCHEDULE BY BLOCK

Block	Apts	Type	Count	Mix
C1	89	Studio	-	0%
		1B	38	43%
		2B (3P)	6	7%
		2B (4P)	43	48%
		3B	2	2%
		<b>Total</b>	<b>89</b>	<b>100%</b>

Block	Apts	Type	Count	Mix
C2	95	Studio	-	0%
		1B	45	47%
		2B (3P)	5	5%
		2B (4P)	45	47%
		3B	-	0%
		<b>Total</b>	<b>95</b>	<b>100%</b>

ALL BLOCKS			
	Type	Count	Mix
184	Studio	-	0%
	1B	83	45%
	2B (3P)	11	6%
	2B (4P)	88	48%
	3B	2	1%
	<b>Total</b>	<b>184</b>	<b>100%</b>



# HOUSING QUALITY ASSESSMENT

Job No.	950749
Job Name:	Adamstown District Centre - BLOCK G
Schedule:	3 HOUSING QUALITY ASSESSMENT
Revision:	Amendment Application October 2021

Henry J Lyons

Note: Highlighted amended units types from permitted planning application SD221A/0007

\*New unit types in red

LOCATION	APARTMENT TYPE			APARTMENT AREA			Part V		ORIENTATION		LIVING/KITCHEN ARE		BEDROOM AREA		STORAGE		PRIVATE OS		COMMUNAL OS		
	Block	Level	Unit No.	Type	Number of bedrooms	Number of bed spaces	Area Provided	Reqd + 10%	Unit over 10%	Dwelling Aspect	Orientation	Living/ Kitchen room area provided	Living/ Kitchen room area required	Aggregate bedroom area provided	Aggregate bedroom area required	Storage area provided	Storage area required	Private terrace / balconies provided	Private terrace / balconies required	Provided	Required
G1	LEVEL 00G	G1.001	T.220_GF		2	4	82.8	73	80.3 YES	DUAL	S/W	32.3	30	29.7	24	6.4	6	7	7	7	7
G1	LEVEL 00G	G1.002	T.109_GF		1	2	51.1	45	49.5 YES	SINGLE	W	26.9	23	11.6	11	5.6	3	8	5	5	5
G1	LEVEL 00G	G1.003	T.109_GF		1	2	51.1	45	49.5 YES	SINGLE	W	26.9	23	11.6	11	5.6	3	8	5	5	5
G1	LEVEL 00G	G1.004	T.109_GF		1	2	51.1	45	49.5 YES	SINGLE	W	26.9	23	11.6	11	5.6	3	8	5	5	5
G1	LEVEL 00G	G1.005	T.220_GF		2	4	82.8	73	80.3 YES	DUAL	W	32.3	30	29.7	24	6.4	6	7	7	7	7
G1	LEVEL 00G	G1.006	T.220_GF		2	4	82.8	73	80.3 YES	DUAL	W	32.3	30	29.7	24	6.4	6	7	7	7	7
G1	LEVEL 00G	G1.007	T.108_GF		1	2	52.9	45	49.5 YES	SINGLE	W	29.8	23	12	11	4.2	3	8	5	5	5
G1	LEVEL 00G	G1.008	T.108_GF		1	2	52.9	45	49.5 YES	SINGLE	W	29.8	23	12	11	4.2	3	8	5	5	5
G1	LEVEL 00G	G1.009	T.108_GF		1	2	52.9	45	49.5 YES	SINGLE	W	29.8	23	12	11	4.2	3	8	5	5	5
G1	LEVEL 00G	G1.010	T.220_GF		2	4	82.8	73	80.3 YES	DUAL	S/W	32.3	30	29.7	24	6.4	6	7	7	7	7
G1	LEVEL 01G	G1N.101	T.102_A		1	2	46	45	49.5 NO	SINGLE	W	24.1	23	11.4	11	3.6	3	5	5	5	5
G1	LEVEL 01G	G1N.102	T.208_A		2	4	80.3	73	80.3 NO	DUAL	N/W	31.4	30	24.6	24	6.3	6	7	7	7	7
G1	LEVEL 01G	G1N.103	T.103_A		1	2	49.6	45	49.5 YES	DUAL	N/E	27.8	23	11.5	11	3.6	3	5	5	5	5
G1	LEVEL 01G	G1N.104	T.101_A		1	2	46.6	45	49.5 NO	SINGLE	E	24.8	23	11.4	11	3.3	3	5	5	5	5
G1	LEVEL 01G	G1N.105	T.207_A		2	3	68.6	63	69.3 NO	DUAL	E	29	28	21.4	20	5.9	5	6	6	6	6
G1	LEVEL 01G	G1N.106	T.206_A		2	4	83.2	73	80.3 YES	DUAL	E/W	39.3	30	24.4	24	7.4	6	7	7	7	7
G1	LEVEL 01G	G1N.107	T.205_A		2	4	74.8	73	80.3 NO	DUAL	S/W	32.8	30	24.5	24	6	6	7	7	7	7
G1	LEVEL 01G	G1S.101	T.103_A		1	2	49.6	45	49.5 YES	SINGLE	W	27.8	23	11.5	11	3.6	3	5	5	5	5
G1	LEVEL 01G	G1S.102	T.202_A		2	4	80.3	73	80.3 YES	DUAL	N/W	37.5	30	24.6	24	6.3	6	7	7	7	7
G1	LEVEL 01G	G1S.103	T.202_A		2	4	80.3	73	80.3 YES	SINGLE	E	37.5	30	24.6	24	6.3	6	7	7	7	7
G1	LEVEL 01G	G1S.104	T.204_A		2	4	74.6	73	80.3 NO	SINGLE	E	32.3	30	24.5	24	6	6	7	7	7	7
G1	LEVEL 01G	G1S.105	T.201_A		2	3	63.9	63	69.3 NO	SINGLE	E	28.3	28	21.8	20	6.3	5	6	6	6	6
G1	LEVEL 01G	G1S.106	T.103_A		1	2	49.6	45	49.5 YES	SINGLE	E	27.8	23	11.5	11	3.6	3	5	5	5	5
G1	LEVEL 01G	G1S.107	T.202_A		2	4	80.3	73	80.3 YES	DUAL	S/E	37.5	30	24.6	24	6.3	6	7	7	7	7
G1	LEVEL 01G	G1S.108	T.202_A		2	4	80.3	73	80.3 YES	DUAL	S/W	37.5	30	24.6	24	6.3	6	7	7	7	7
G1	LEVEL 01G	G1S.109	T.103_A		1	2	49.6	45	49.5 YES	SINGLE	W	27.8	23	11.5	11	3.6	3	5	5	5	5
G1	LEVEL 01G	G1S.110	T.103_A		1	2	49.6	45	49.5 YES	SINGLE	W	27.8	23	11.5	11	3.6	3	5	5	5	5
G1	LEVEL 02G	G1N.201	T.102_A		1	2	46	45	49.5 NO	SINGLE	W	24.1	23	11.4	11	3.6	3	5	5	5	5
G1	LEVEL 02G	G1N.202	T.208_A		2	4	80.3	73	80.3 NO	DUAL	N/W	31.4	30	24.6	24	6.3	6	7	7	7	7
G1	LEVEL 02G	G1N.203	T.103_A		1	2	49.6	45	49.5 YES	DUAL	N/E	27.8	23	11.5	11	3.6	3	5	5	5	5
G1	LEVEL 02G	G1N.204	T.101_A		1	2	46.6	45	49.5 NO	SINGLE	E	24.8	23	11.4	11	3.3	3	5	5	5	5
G1	LEVEL 02G	G1N.205	T.207_A		2	3	68.6	63	69.3 NO	DUAL	E	29	28	21.4	20	5.9	5	6	6	6	6
G1	LEVEL 02G	G1N.206	T.206_A		2	4	83.2	73	80.3 YES	DUAL	E/W	39.3	30	24.4	24	7.4	6	7	7	7	7
G1	LEVEL 02G	G1N.207	T.205_A		2	4	74.8	73	80.3 NO	DUAL	S/W	32.8	30	24.5	24	6	6	7	7	7	7
G1	LEVEL 02G	G1S.201	T.103_A		1	2	49.6	45	49.5 YES	SINGLE	W	27.8	23	11.5	11	3.6	3	5	5	5	5
G1	LEVEL 02G	G1S.202	T.202_A		2	4	80.3	73	80.3 YES	DUAL	N/W	37.5	30	24.6	24	6.3	6	7	7	7	7
G1	LEVEL 02G	G1S.203	T.202_A		2	4	80.3	73	80.3 YES	SINGLE	E	37.5	30	24.6	24	6.3	6	7	7	7	7
G1	LEVEL 02G	G1S.204	T.204_A		2	4	74.6	73	80.3 NO	SINGLE	E	32.3	30	24.5	24	6	6	7	7	7	7
G1	LEVEL 02G	G1S.205	T.201_A		2	3	63.9	63	69.3 NO	SINGLE	E	28.3	28	21.8	20	6.3	5	6	6	6	6
G1	LEVEL 02G	G1S.206	T.103_A		1	2	49.6	45	49.5 YES	DUAL	S/E	37.5	30	24.6	24	6.3	6	7	7	7	7
G1	LEVEL 02G	G1S.207	T.202_A		2	4	80.3	73	80.3 YES	DUAL	S/W	37.5	30	24.6	24	6.3	6	7	7	7	7
G1	LEVEL 02G	G1S.208	T.202_A		2	4	80.3	73	80.3 YES	DUAL	S/W	37.5	30	24.6	24	6.3	6	7	7	7	7
G1	LEVEL 02G	G1S.209	T.103_A		1	2	49.6	45	49.5 YES	DUAL	S/E	37.5	30	24.6	24	6.3	6	7	7	7	7
G1	LEVEL 02G	G1S.210	T.103_A		1	2	49.6	45	49.5 YES	SINGLE	W	27.8	23	11.5	11	3.6	3	5	5	5	5
G1	LEVEL 03G	G1N.301	T.102_A		1	2	46	45	49.5 NO	SINGLE	W	24.1	23	11.4	11	3.6	3	5	5	5	5
G1	LEVEL 03G	G1N.302	T.208_A		2	4	80.3	73	80.3 NO	DUAL	N/W	31.4	30	24.6	24	6.3	6	7	7	7	7
G1	LEVEL 03G	G1N.303	T.103_A		1	2	49.6	45	49.5 YES	DUAL	N/E	27.8	23	11.5	11	3.6	3	5	5	5	5
G1	LEVEL 03G	G1N.304	T.101_A		1	2	46.6	45	49.5 NO	SINGLE	E	24.8	23	11.4	11	3.3	3	5	5	5	5
G1	LEVEL 03G	G1N.305	T.207_A		2	3	68.6	63	69.3 NO	DUAL	E	29	28	21.4	20	5.9	5	6	6	6	6
G1	LEVEL 03G	G1N.306	T.206_A		2	4	83.2	73	80.3 YES	DUAL	E/W	39.3	30	24.4	24	7.4	6	7	7	7	7



# HOUSING QUALITY ASSESSMENT

Job No.:	950749
Job Name:	Adamstown District Centre - BLOCK G
Schedule:	3 HOUSING QUALITY ASSESSMENT
Revision:	Amendment Application October 2021

Note: Highlighted amended units types from permitted planning application SD221A/0007  
 \*New unit types in red

Henry J Lyons

LOCATION	Block	Level	Unit No.	Type	APARTMENT TYPE		APARTMENT AREA				Part V	ORIENTATION		LIVING/KITCHEN ARE		BEDROOM AREA		STORAGE		PRIVATE OS		COMMUNAL OS		
					Number of bedrooms	Number of bed spaces	Area Provided	Required	Reqd + 10%	Unit over 10%		Dwelling Aspect	Orientation	Living/ Kitchen room area provided	Living/ Kitchen room area required	Aggregate bedroom area provided	Aggregate bedroom area required	Storage area provided	Storage area required	Private terrace / balconies provided	Private terrace / balconies required	Provided	Required m2	
G1	LEVEL 03G	LEVEL 03G	G1N.307	T.205_A	2	4	74.8	73	80.3	NO		DUAL	S/W	32.8	30	24.5	24	6	6	3	3	7	7	7
G1	LEVEL 03G	LEVEL 03G	G1S.301	T.103_A	1	2	49.6	45	49.5	YES		SINGLE	W	27.8	23	11.5	11	3.6	3	5	5	5	5	
G1	LEVEL 03G	LEVEL 03G	G1S.302	T.202_A	2	4	80.3	73	80.3	YES		DUAL	N/W	37.5	30	24.6	24	6.3	6	7	7	7	7	
G1	LEVEL 03G	LEVEL 03G	G1S.303	T.202_A	2	4	80.3	73	80.3	YES		SINGLE	E	37.5	30	24.6	24	6.3	6	7	7	7	7	
G1	LEVEL 03G	LEVEL 03G	G1S.304	T.204_A	2	4	74.6	73	80.3	NO		SINGLE	E	32.3	30	24.5	24	6	6	7	7	7	7	
G1	LEVEL 03G	LEVEL 03G	G1S.305	T.201_A	2	3	63.9	63	69.3	NO		SINGLE	E	28.3	28	21.8	20	6.3	5	6	6	6	6	
G1	LEVEL 03G	LEVEL 03G	G1S.306	T.103_A	1	2	49.6	45	49.5	YES	Yes	SINGLE	E	27.8	23	11.5	11	3.6	3	5	5	5	5	
G1	LEVEL 03G	LEVEL 03G	G1S.307	T.202_A	2	4	80.3	73	80.3	YES		DUAL	S/E	37.5	30	24.6	24	6.3	6	7	7	7	7	
G1	LEVEL 03G	LEVEL 03G	G1S.308	T.202_A	2	4	80.3	73	80.3	YES	No	DUAL	S/W	37.5	30	24.6	24	6.3	6	7	7	7	7	
G1	LEVEL 03G	LEVEL 03G	G1S.309	T.103_A	1	2	49.6	45	49.5	YES	Yes	SINGLE	W	27.8	23	11.5	11	3.6	3	5	5	5	5	
G1	LEVEL 03G	LEVEL 03G	G1S.310	T.103_A	1	2	49.6	45	49.5	YES	Yes	SINGLE	W	27.8	23	11.5	11	3.6	3	5	5	5	5	
G1	LEVEL 04G	LEVEL 04G	G1N.401	T.102_A	1	2	46	45	49.5	NO		SINGLE	W	24.1	23	11.4	11	3.6	3	5	5	5	5	
G1	LEVEL 04G	LEVEL 04G	G1N.402	T.208_A	2	4	80.3	73	80.3	NO		DUAL	N/W	31.4	30	24.6	24	6.3	6	7	7	7	7	
G1	LEVEL 04G	LEVEL 04G	G1N.403	T.103_A	1	2	49.6	45	49.5	YES		DUAL	N/E	27.8	23	11.5	11	3.6	3	5	5	5	5	
G1	LEVEL 04G	LEVEL 04G	G1N.404	T.101_A	1	2	46.6	45	49.5	NO		SINGLE	E	24.8	23	11.4	11	3.3	3	5	5	5	5	
G1	LEVEL 04G	LEVEL 04G	G1N.405	T.211_A	2	4	76.6	73	80.3	NO		DUAL	S/E	31.2	30	25.5	24	7.9	6	7	7	7	7	
G1	LEVEL 04G	LEVEL 04G	G1N.406	T.205_A	2	4	74.8	73	80.3	NO		DUAL	S/W	32.8	30	24.5	24	6	6	7	7	7	7	
G1	LEVEL 05G	LEVEL 05G	G1N.501	T.102_A	1	2	46	45	49.5	NO		SINGLE	W	24.1	23	11.4	11	3.6	3	5	5	5	5	
G1	LEVEL 05G	LEVEL 05G	G1N.502	T.208_A	2	4	80.3	73	80.3	NO		DUAL	N/W	31.4	30	24.6	24	6.3	6	7	7	7	7	
G1	LEVEL 05G	LEVEL 05G	G1N.503	T.103_A	1	2	49.6	45	49.5	YES		DUAL	N/E	27.8	23	11.5	11	3.6	3	5	5	5	5	
G1	LEVEL 05G	LEVEL 05G	G1N.504	T.101_A	1	2	46.6	45	49.5	NO		SINGLE	E	24.8	23	11.4	11	3.3	3	5	5	5	5	
G1	LEVEL 05G	LEVEL 05G	G1N.505	T.211_A	2	4	76.6	73	80.3	NO		DUAL	S/E	31.2	30	25.5	24	7.9	6	7	7	7	7	
G1	LEVEL 05G	LEVEL 05G	G1N.506	T.205_A	2	4	74.8	73	80.3	NO		DUAL	S/W	32.8	30	24.5	24	6	6	7	7	7	7	
G1	LEVEL 06G	LEVEL 06G	G1N.601	T.102_A	1	2	46	45	49.5	NO		SINGLE	W	24.1	23	11.4	11	3.6	3	5	5	5	5	
G1	LEVEL 06G	LEVEL 06G	G1N.602	T.208_A	2	4	80.3	73	80.3	NO		DUAL	N/W	31.4	30	24.6	24	6.3	6	7	7	7	7	
G1	LEVEL 06G	LEVEL 06G	G1N.603	T.103_A	1	2	49.6	45	49.5	YES		DUAL	N/E	27.8	23	11.5	11	3.6	3	5	5	5	5	
G1	LEVEL 06G	LEVEL 06G	G1N.604	T.101_A	1	2	46.6	45	49.5	NO		SINGLE	E	24.8	23	11.4	11	3.3	3	5	5	5	5	
G1	LEVEL 06G	LEVEL 06G	G1N.605	T.211_A	2	4	76.6	73	80.3	NO		DUAL	S/E	31.2	30	25.5	24	7.9	6	7	7	7	7	
G1	LEVEL 06G	LEVEL 06G	G1N.606	T.205_A	2	4	74.8	73	80.3	NO		DUAL	S/W	32.8	30	24.5	24	6	6	7	7	7	7	
G1	LEVEL 07G	LEVEL 07G	G1N.701	T.102_A	1	2	46	45	49.5	NO		SINGLE	W	24.1	23	11.4	11	3.6	3	5	5	5	5	
G1	LEVEL 07G	LEVEL 07G	G1N.702	T.208_A	2	4	80.3	73	80.3	NO		DUAL	N/W	31.4	30	24.6	24	6.3	6	7	7	7	7	
G1	LEVEL 07G	LEVEL 07G	G1N.703	T.301_A	3	5	98.8	90	99	NO		DUAL	N/E	37.2	34	33.4	32	9.5	9	9	9	9	9	
G1	LEVEL 07G	LEVEL 07G	G1N.704	T.211_A	2	4	76.6	73	80.3	NO		DUAL	S/E	31.2	30	25.5	24	7.9	6	7	7	7	7	
G1	LEVEL 07G	LEVEL 07G	G1N.705	T.205_A	2	4	74.8	73	80.3	NO		DUAL	S/W	32.8	30	24.5	24	6	6	7	7	7	7	
G1	LEVEL 08G	LEVEL 08G	G1N.801	T.102_A	1	2	46	45	49.5	NO		SINGLE	W	24.1	23	11.4	11	3.6	3	5	5	5	5	
G1	LEVEL 08G	LEVEL 08G	G1N.802	T.208_A	2	4	80.3	73	80.3	NO		DUAL	N/W	31.4	30	24.6	24	6.3	6	7	7	7	7	
G1	LEVEL 08G	LEVEL 08G	G1N.803	T.301_A	3	5	98.8	90	99	NO		DUAL	N/E	37.2	34	33.4	32	9.5	9	9	9	9	9	
G1	LEVEL 08G	LEVEL 08G	G1N.804	T.211_A	2	4	76.6	73	80.3	NO		DUAL	S/E	31.2	30	25.5	24	7.9	6	7	7	7	7	
G1	LEVEL 08G	LEVEL 08G	G1N.805	T.205_A	2	4	74.8	73	80.3	NO		DUAL	S/W	32.8	30	24.5	24	6	6	7	7	7	7	
G2	LEVEL 00G	LEVEL 00G	G2.001	T.221_GF	2	4	75.8	73	80.3	NO		DUAL	S/W	32.3	30	25.8	24	6.2	6	6	6	7	7	
G2	LEVEL 00G	LEVEL 00G	G2.002	T.222_GF	2	4	74.7	73	80.3	NO		SINGLE	S	30	30	26.7	24	6.4	6	6	6	7	7	
G2	LEVEL 00G	LEVEL 00G	G2.003	T.223_GF	2	4	73	73	80.3	NO		DUAL	S/E	30.7	30	24.4	24	6.3	6	6	6	7	7	
G2	LEVEL 00G	LEVEL 00G	G2.004	T.109_GF	1	2	51.1	45	49.5	YES		SINGLE	E	26.9	23	11.6	11	5.6	5	5	5	5	5	
G2	LEVEL 00G	LEVEL 00G	G2.005	T.109_GF	1	2	51.1	45	49.5	YES		SINGLE	E	26.9	23	11.6	11	5.6	5	5	5	5	5	
G2	LEVEL 00G	LEVEL 00G	G2.006	T.220_GF	2	4	82.8	73	80.3	YES		DUAL	E	32.3	30	29.7	24	6.4	6	6	6	7	7	
G2	LEVEL 00G	LEVEL 00G	G2.007	T.109_GF	1	2	51.1	45	49.5	YES		SINGLE	E	26.9	23	11.6	11	5.6	5	5	5	5	5	
G2	LEVEL 00G	LEVEL 00G	G2.008	T.109_GF	1	2	51.1	45	49.5	YES		SINGLE	E	26.9	23	11.6	11	5.6	5	5	5	5	5	
G2	LEVEL 00G	LEVEL 00G	G2.009	T.109_GF	1	2	51.1	45	49.5	YES		SINGLE	E	26.9	23	11.6	11	5.6	5	5	5	5	5	
G2	LEVEL 00G	LEVEL 00G	G2.010	T.220_GF	2	4	82.8	73	80.3	YES		DUAL	E	32.3	30	29.7	24	6.4	6	6	6	7	7	
G2	LEVEL 00G	LEVEL 00G	G2.011	T.220_GF	2	4	82.8	73	80.3	YES		DUAL	E	32.3	30	29.7	24	6.4	6	6	6	7	7	
G2	LEVEL 00G	LEVEL 00G	G2.012	T.108_GF	1	2	52.9	45	49.5	YES		SINGLE	E	29.8	23	12	11	4.2	3	8	5	5	5	



# HOUSING QUALITY ASSESSMENT

Job No.	950749
Job Name:	Adamstown District Centre - BLOCK G
Schedule:	3 HOUSING QUALITY ASSESSMENT
Revision:	Amendment Application October 2021

## Henry J Lyons

Note: Highlighted amended units types from permitted planning application SD221A/0007  
 \*New unit types in red

LOCATION	Block	Level	Unit No.	Type	APARTMENT TYPE		APARTMENT AREA			Part V	ORIENTATION		LIVING/KITCHEN ARE		BEDROOM AREA		STORAGE		PRIVATE OS		COMMUNAL OS	
					Number of bedrooms	Number of bed spaces	Area Provided	Reqd + 10%	Unit over 10%		Dwelling Aspect	Orientation	Living/ Kitchen room area provided	Living/ Kitchen room area required	Aggregate bedroom area provided	Aggregate bedroom area required	Storage area provided	Storage area required	Private terrace/ balconies provided	Private terrace/ balconies required	Provided	Required
G2	LEVEL 00G	G2.013	T.108_GF	1	2	52.9	45	49.5 YES		SINGLE	E	29.8	23	12	11	4.2	3	8	5	5	5	
G2	LEVEL 00G	G2.014	T.108_GF	1	2	52.9	45	49.5 YES		SINGLE	E	29.8	23	12	11	4.2	3	8	5	5	5	
G2	LEVEL 00G	G2.015	T.220_GF	2	4	82.8	73	80.3 YES		DUAL	E	32.3	30	29.7	24	6.4	6	7	7	7	7	
G2	LEVEL 00G	G2.016	T.110_GF	1	2	56.1	45	49.5 YES		SINGLE	W	28	23	15	11	5.6	3	8	5	7	7	
G2	LEVEL 01G	G2N.101	T.215_A	2	3	63.7	63	69.3 NO		SINGLE	W	28.5	28	21.8	20	6.2	5	6	6	6	6	
G2	LEVEL 01G	G2N.102	T.103_A	1	2	49.6	45	49.5 YES		SINGLE	E	27.8	23	11.5	11	3.6	3	5	5	5	5	
G2	LEVEL 01G	G2N.103	T.202_A	2	4	80.3	73	80.3 YES		SINGLE	E	37.5	30	24.6	24	6.3	6	7	7	7	7	
G2	LEVEL 01G	G2N.104	T.202_A	2	4	80.3	73	80.3 YES		SINGLE	E	37.5	30	24.6	24	6.3	6	7	7	7	7	
G2	LEVEL 01G	G2N.105	T.103_A	1	2	49.6	45	49.5 YES		SINGLE	W	27.8	23	11.5	11	3.6	3	5	5	5	5	
G2	LEVEL 01G	G2N.106	T.103_A	1	2	49.6	45	49.5 YES		SINGLE	W	27.8	23	11.5	11	3.6	3	5	5	5	5	
G2	LEVEL 01G	G2N.107	T.103_A	1	2	49.6	45	49.5 YES		SINGLE	W	27.8	23	11.5	11	3.6	3	5	5	5	5	
G2	LEVEL 01G	G2N.108	T.103_A	1	2	49.6	45	49.5 YES		SINGLE	W	27.8	23	11.5	11	3.6	3	5	5	5	5	
G2	LEVEL 01G	G2N.109	T.202_A	2	4	80.3	73	80.3 YES		DUAL	N/W	37.5	30	24.6	24	6.3	6	7	7	7	7	
G2	LEVEL 01G	G2N.110	T.202_A	2	4	80.3	73	80.3 YES		DUAL	N/E	37.5	30	24.6	24	6.3	6	7	7	7	7	
G2	LEVEL 01G	G2N.111	T.103_A	1	2	49.6	45	49.5 YES		SINGLE	E	27.8	23	11.5	11	3.6	3	5	5	5	5	
G2	LEVEL 01G	G2S.102	T.203_A	2	4	78.1	73	80.3 NO		DUAL	E/W	31.9	30	24.6	24	7.3	6	7	7	7	7	
G2	LEVEL 01G	G2S.103	T.103_A	1	2	49.6	45	49.5 YES		SINGLE	N/E	27.8	23	11.5	11	3.6	3	5	5	5	5	
G2	LEVEL 01G	G2S.104	T.103_A	1	2	49.6	45	49.5 YES		SINGLE	E	27.8	23	11.5	11	3.6	3	5	5	5	5	
G2	LEVEL 01G	G2S.105	T.209_A	2	4	81.5	73	80.3 YES		DUAL	S/E	37.8	30	25.5	24	6.2	6	7	7	7	7	
G2	LEVEL 01G	G2S.106	T.214_A	2	4	74.7	73	80.3 NO		SINGLE	S	30.4	30	26.7	24	6	6	7	7	7	7	
G2	LEVEL 01G	G2S.107	T.212_A	2	4	82.6	73	80.3 YES		DUAL	S/W	37.9	30	25.9	24	6	6	7	7	7	7	
G2	LEVEL 01G	G2S.108	T.213_A	2	4	76.7	73	80.3 NO		DUAL	N/W	31.7	30	26.4	24	6.6	6	7	7	7	7	
G2	LEVEL 01G	G2S.201	T.205_A	2	4	74.8	73	80.3 NO		SINGLE	W	32.8	30	24.5	24	6	6	7	7	7	7	
G2	LEVEL 02G	G2N.106	T.215_A	2	3	63.7	63	69.3 NO		SINGLE	W	28.5	28	21.8	20	6.2	5	6	6	6	6	
G2	LEVEL 02G	G2N.202	T.103_A	1	2	49.6	45	49.5 YES		SINGLE	E	27.8	23	11.5	11	3.6	3	5	5	5	5	
G2	LEVEL 02G	G2N.203	T.202_A	2	4	80.3	73	80.3 YES		SINGLE	E	37.5	30	24.6	24	6.3	6	7	7	7	7	
G2	LEVEL 02G	G2N.204	T.202_A	2	4	80.3	73	80.3 YES		SINGLE	W	37.5	30	24.6	24	6.3	6	7	7	7	7	
G2	LEVEL 02G	G2N.205	T.103_A	1	2	49.6	45	49.5 YES		SINGLE	W	27.8	23	11.5	11	3.6	3	5	5	5	5	
G2	LEVEL 02G	G2N.206	T.103_A	1	2	49.6	45	49.5 YES		SINGLE	W	27.8	23	11.5	11	3.6	3	5	5	5	5	
G2	LEVEL 02G	G2N.207	T.103_A	1	2	49.6	45	49.5 YES		SINGLE	W	27.8	23	11.5	11	3.6	3	5	5	5	5	
G2	LEVEL 02G	G2N.208	T.103_A	1	2	49.6	45	49.5 YES		SINGLE	W	27.8	23	11.5	11	3.6	3	5	5	5	5	
G2	LEVEL 02G	G2N.209	T.202_A	2	4	80.3	73	80.3 YES		DUAL	N/W	37.5	30	24.6	24	6.3	6	7	7	7	7	
G2	LEVEL 02G	G2N.210	T.202_A	2	4	80.3	73	80.3 YES		DUAL	N/E	37.5	30	24.6	24	6.3	6	7	7	7	7	
G2	LEVEL 02G	G2N.211	T.103_A	1	2	49.6	45	49.5 YES		SINGLE	E	27.8	23	11.5	11	3.6	3	5	5	5	5	
G2	LEVEL 02G	G2S.201	T.205_A	2	4	74.8	73	80.3 NO		SINGLE	W	32.8	30	24.5	24	6	6	7	7	7	7	
G2	LEVEL 02G	G2S.202	T.203_A	2	4	78.1	73	80.3 NO		DUAL	E/W	31.9	30	24.6	24	7.3	6	7	7	7	7	
G2	LEVEL 02G	G2S.203	T.103_A	1	2	49.6	45	49.5 YES		SINGLE	E	27.8	23	11.5	11	3.6	3	5	5	5	5	
G2	LEVEL 02G	G2S.204	T.103_A	1	2	49.6	45	49.5 YES		SINGLE	E	27.8	23	11.5	11	3.6	3	5	5	5	5	
G2	LEVEL 02G	G2S.205	T.209_A	2	4	81.5	73	80.3 YES		DUAL	S/E	37.8	30	25.5	24	6.2	6	7	7	7	7	
G2	LEVEL 02G	G2S.206	T.214_A	2	4	74.7	73	80.3 NO		SINGLE	S	30.4	30	26.7	24	6	6	7	7	7	7	
G2	LEVEL 02G	G2S.207	T.212_A	2	4	82.6	73	80.3 YES		DUAL	N/W	37.9	30	25.9	24	6	6	7	7	7	7	
G2	LEVEL 02G	G2S.208	T.213_A	2	4	76.7	73	80.3 NO		DUAL	N/E	31.7	30	26.4	24	6.6	6	7	7	7	7	
G2	LEVEL 03G	G2N.106	T.215_A	2	3	63.7	63	69.3 NO		SINGLE	W	28.5	28	21.8	20	6.2	5	6	6	6	6	
G2	LEVEL 03G	G2N.302	T.103_A	1	2	49.6	45	49.5 YES		SINGLE	E	27.8	23	11.5	11	3.6	3	5	5	5	5	
G2	LEVEL 03G	G2N.303	T.202_A	2	4	80.3	73	80.3 YES		SINGLE	E	37.5	30	24.6	24	6.3	6	7	7	7	7	
G2	LEVEL 03G	G2N.304	T.202_A	2	4	80.3	73	80.3 YES		SINGLE	W	37.5	30	24.6	24	6.3	6	7	7	7	7	
G2	LEVEL 03G	G2N.305	T.103_A	1	2	49.6	45	49.5 YES		SINGLE	W	27.8	23	11.5	11	3.6	3	5	5	5	5	
G2	LEVEL 03G	G2N.306	T.103_A	1	2	49.6	45	49.5 YES		SINGLE	W	27.8	23	11.5	11	3.6	3	5	5	5	5	
G2	LEVEL 03G	G2N.307	T.103_A	1	2	49.6	45	49.5 YES		SINGLE	W	27.8	23	11.5	11	3.6	3	5	5	5	5	
G2	LEVEL 03G	G2N.308	T.103_A	1	2	49.6	45	49.5 YES		SINGLE	W	27.8	23	11.5	11	3.6	3	5	5	5	5	
G2	LEVEL 03G	G2N.309	T.202_A	2	4	80.3	73	80.3 YES		DUAL	N/W	37.5	30	24.6	24	6.3	6	7	7	7	7	



# HOUSING QUALITY ASSESSMENT

Job No.:	950749
Job Name:	Adamstown District Centre - BLOCK G
Schedule:	3 HOUSING QUALITY ASSESSMENT
Revision:	Amendment Application October 2021

Note: Highlighted amended units types from permitted planning application SD221A/0007  
 \*New unit types in red

Henry J Lyons

LOCATION	Block	Level	Unit No.	Type	APARTMENT TYPE		APARTMENT AREA				Part V	ORIENTATION		LIVING/KITCHEN AREA		BEDROOM AREA		STORAGE		PRIVATE OS		COMMUNAL OS	
					Number of bedrooms	Number of bed spaces	Area Provided	Required	Reqd + 10%	Unit over 10%		Dwelling Aspect	Orientation	Living/ Kitchen room area provided	Living/ Kitchen room area required	Aggregate bedroom area provided	Aggregate bedroom area required	Storage area provided	Storage area required	Private terrace / balconies provided	Private terrace / balconies required	Provided	Required
G2		LEVEL 03G	G2N.310	T.202_A	2	4	80.3	73	80.3	YES		DUAL	N/E	37.5	30	24.6	24	6.3	6	7	7	7	7
G2		LEVEL 03G	G2N.311	T.103_A	1	2	49.6	45	49.5	YES		SINGLE	E	27.8	23	11.5	11	3.6	3	5	5	5	5
G2		LEVEL 03G	G2S.301	T.205_A	2	4	74.8	73	80.3	NO		SINGLE	W	32.8	30	24.5	24	6	6	7	7	7	7
G2		LEVEL 03G	G2S.302	T.203_A	2	4	78.1	73	80.3	NO		DUAL	E/W	31.9	30	24.6	24	7.3	6	7	7	7	7
G2		LEVEL 03G	G2S.303	T.103_A	1	2	49.6	45	49.5	YES		SINGLE	E	27.8	23	11.5	11	3.6	3	5	5	5	5
G2		LEVEL 03G	G2S.304	T.103_A	1	2	49.6	45	49.5	YES		SINGLE	E	27.8	23	11.5	11	3.6	3	5	5	5	5
G2		LEVEL 03G	G2S.305	T.209_A	2	4	81.5	73	80.3	YES		DUAL	S/E	37.8	30	25.5	24	6.2	6	7	7	7	7
G2		LEVEL 03G	G2S.306	T.214_A	2	4	74.7	73	80.3	NO		SINGLE	S	30.4	30	26.7	24	6	6	7	7	7	7
G2		LEVEL 03G	G2S.307	T.212_A	2	4	82.6	73	80.3	YES		DUAL	N/W	37.9	30	25.9	24	6	6	7	7	7	7
G2		LEVEL 03G	G2S.308	T.213_A	2	4	76.7	73	80.3	NO		DUAL	N/E	31.7	30	26.4	24	6.6	6	7	7	7	7
G2		LEVEL 04G	G2N.106	T.215_A	1	3	63.7	63	69.3	NO		SINGLE	W	28.5	28	21.8	20	6.2	5	6	6	6	6
G2		LEVEL 04G	G2N.106	T.213_A	2	4	76.7	73	80.3	NO		DUAL	N/E	31.7	30	26.4	24	6.6	6	7	7	7	7
G2		LEVEL 04G	G2N.106	T.215_A	1	3	63.7	63	69.3	NO		SINGLE	W	28.5	28	21.8	20	6.2	5	6	6	6	6
G2		LEVEL 04G	G2N.106	T.213_A	2	4	76.7	73	80.3	NO		DUAL	N/E	31.7	30	26.4	24	6.6	6	7	7	7	7
G2		LEVEL 04G	G2N.106	T.215_A	1	3	63.7	63	69.3	NO		SINGLE	W	28.5	28	21.8	20	6.2	5	6	6	6	6
G2		LEVEL 04G	G2N.106	T.213_A	2	4	76.7	73	80.3	NO		DUAL	N/E	31.7	30	26.4	24	6.6	6	7	7	7	7
G2		LEVEL 04G	G2N.106	T.215_A	1	3	63.7	63	69.3	NO		SINGLE	W	28.5	28	21.8	20	6.2	5	6	6	6	6
G2		LEVEL 04G	G2N.106	T.213_A	2	4	76.7	73	80.3	NO		DUAL	N/E	31.7	30	26.4	24	6.6	6	7	7	7	7
G2		LEVEL 04G	G2N.106	T.215_A	1	3	63.7	63	69.3	NO		SINGLE	W	28.5	28	21.8	20	6.2	5	6	6	6	6
G2		LEVEL 04G	G2N.106	T.213_A	2	4	76.7	73	80.3	NO		DUAL	N/E	31.7	30	26.4	24	6.6	6	7	7	7	7
G2		LEVEL 04G	G2N.106	T.215_A	1	3	63.7	63	69.3	NO		SINGLE	W	28.5	28	21.8	20	6.2	5	6	6	6	6
G2		LEVEL 04G	G2N.106	T.213_A	2	4	76.7	73	80.3	NO		DUAL	N/E	31.7	30	26.4	24	6.6	6	7	7	7	7
G2		LEVEL 04G	G2N.106	T.215_A	1	3	63.7	63	69.3	NO		SINGLE	W	28.5	28	21.8	20	6.2	5	6	6	6	6
G2		LEVEL 04G	G2N.106	T.213_A	2	4	76.7	73	80.3	NO		DUAL	N/E	31.7	30	26.4	24	6.6	6	7	7	7	7
G2		LEVEL 04G	G2N.106	T.215_A	1	3	63.7	63	69.3	NO		SINGLE	W	28.5	28	21.8	20	6.2	5	6	6	6	6
G2		LEVEL 04G	G2N.106	T.213_A	2	4	76.7	73	80.3	NO		DUAL	N/E	31.7	30	26.4	24	6.6	6	7	7	7	7
G2		LEVEL 04G	G2N.106	T.215_A	1	3	63.7	63	69.3	NO		SINGLE	W	28.5	28	21.8	20	6.2	5	6	6	6	6
G2		LEVEL 04G	G2N.106	T.213_A	2	4	76.7	73	80.3	NO		DUAL	N/E	31.7	30	26.4	24	6.6	6	7	7	7	7
G2		LEVEL 04G	G2N.106	T.215_A	1	3	63.7	63	69.3	NO		SINGLE	W	28.5	28	21.8	20	6.2	5	6	6	6	6
G2		LEVEL 04G	G2N.106	T.213_A	2	4	76.7	73	80.3	NO		DUAL	N/E	31.7	30	26.4	24	6.6	6	7	7	7	7
G2		LEVEL 04G	G2N.106	T.215_A	1	3	63.7	63	69.3	NO		SINGLE	W	28.5	28	21.8	20	6.2	5	6	6	6	6
G2		LEVEL 04G	G2N.106	T.213_A	2	4	76.7	73	80.3	NO		DUAL	N/E	31.7	30	26.4	24	6.6	6	7	7	7	7
G2		LEVEL 04G	G2N.106	T.215_A	1	3	63.7	63	69.3	NO		SINGLE	W	28.5	28	21.8	20	6.2	5	6	6	6	6
G2		LEVEL 04G	G2N.106	T.213_A	2	4	76.7	73	80.3	NO		DUAL	N/E	31.7	30	26.4	24	6.6	6	7	7	7	7
G2		LEVEL 04G	G2N.106	T.215_A	1	3	63.7	63	69.3	NO		SINGLE	W	28.5	28	21.8	20	6.2	5	6	6	6	6
G2		LEVEL 04G	G2N.106	T.213_A	2	4	76.7	73	80.3	NO		DUAL	N/E	31.7	30	26.4	24	6.6	6	7	7	7	7
G2		LEVEL 04G	G2N.106	T.215_A	1	3	63.7	63	69.3	NO		SINGLE	W	28.5	28	21.8	20	6.2	5	6	6	6	6
G2		LEVEL 04G	G2N.106	T.213_A	2	4	76.7	73	80.3	NO		DUAL	N/E	31.7	30	26.4	24	6.6	6	7	7	7	7
G2		LEVEL 04G	G2N.106	T.215_A	1	3	63.7	63	69.3	NO		SINGLE	W	28.5	28	21.8	20	6.2	5	6	6	6	6
G2		LEVEL 04G	G2N.106	T.213_A	2	4	76.7	73	80.3	NO		DUAL	N/E	31.7	30	26.4	24	6.6	6	7	7	7	7
G2		LEVEL 04G	G2N.106	T.215_A	1	3	63.7	63	69.3	NO		SINGLE	W	28.5	28	21.8	20	6.2	5	6	6	6	6
G2		LEVEL 04G	G2N.106	T.213_A	2	4	76.7	73	80.3	NO		DUAL	N/E	31.7	30	26.4	24	6.6	6	7	7	7	7
G2		LEVEL 04G	G2N.106	T.215_A	1	3	63.7	63	69.3	NO		SINGLE	W	28.5	28	21.8	20	6.2	5	6	6	6	6
G2		LEVEL 04G	G2N.106	T.213_A	2	4	76.7	73	80.3	NO		DUAL	N/E	31.7	30	26.4	24	6.6	6	7	7	7	7
G2		LEVEL 04G	G2N.106	T.215_A	1	3	63.7	63	69.3	NO		SINGLE	W	28.5	28	21.8	20	6.2	5	6	6	6	6
G2		LEVEL 04G	G2N.106	T.213_A	2	4	76.7	73	80.3	NO		DUAL	N/E	31.7	30	26.4	24	6.6	6	7	7	7	7
G2		LEVEL 04G	G2N.106	T.215_A	1	3	63.7	63	69.3	NO		SINGLE	W	28.5	28	21.8	20	6.2	5	6	6	6	6
G2		LEVEL 04G	G2N.106	T.213_A	2	4	76.7	73	80.3	NO		DUAL	N/E	31.7	30	26.4	24	6.6	6	7	7	7	7
G2		LEVEL 04G	G2N.106	T.215_A	1	3	63.7	63	69.3	NO		SINGLE	W	28.5	28	21.8	20	6.2	5	6	6	6	6
G2		LEVEL 04G	G2N.106	T.213_A	2	4	76.7	73	80.3	NO		DUAL	N/E	31.7	30	26.4	24	6.6	6	7	7	7	7
G2		LEVEL 04G	G2N.106	T.215_A	1	3	63.7	63	69.3	NO		SINGLE	W	28.5	28	21.8	20	6.2	5	6	6	6	6
G2		LEVEL 04G	G2N.106	T.213_A	2	4	76.7	73	80.3	NO		DUAL	N/E	31.7	30	26.4	24	6.6	6	7	7	7	7
G2		LEVEL 04G	G2N.106	T.215_A	1	3	63.7	63	69.3	NO		SINGLE	W	28.5	28	21.8	20	6.2	5	6	6	6	6
G2		LEVEL 04G	G2N.106	T.213_A	2	4	76.7	73	80.3	NO		DUAL	N/E	31.7	30	26.4	24	6.6	6	7	7	7	7
G2		LEVEL 04G	G2N.106	T.215_A	1	3	63.7	63	69.3	NO		SINGLE	W	28.5	28	21.8	20	6.2	5	6	6	6	6
G2		LEVEL 04G	G2N.106	T.213_A	2	4	76.7	73	80.3	NO		DUAL	N/E	31.7	30	26.4	24	6.6	6	7	7	7	7
G2		LEVEL 04G	G2N.106	T.215_A	1	3	63.7	63	69.3	NO		SINGLE	W	28.5	28	21.8	20	6.2	5	6	6	6	6
G2		LEVEL 04G	G2N.106	T.213_A	2	4	76.7	73	80.3	NO		DUAL	N/E	31.7	30	26.4	24	6.6	6	7	7	7	7
G2		LEVEL 04G	G2N																				



