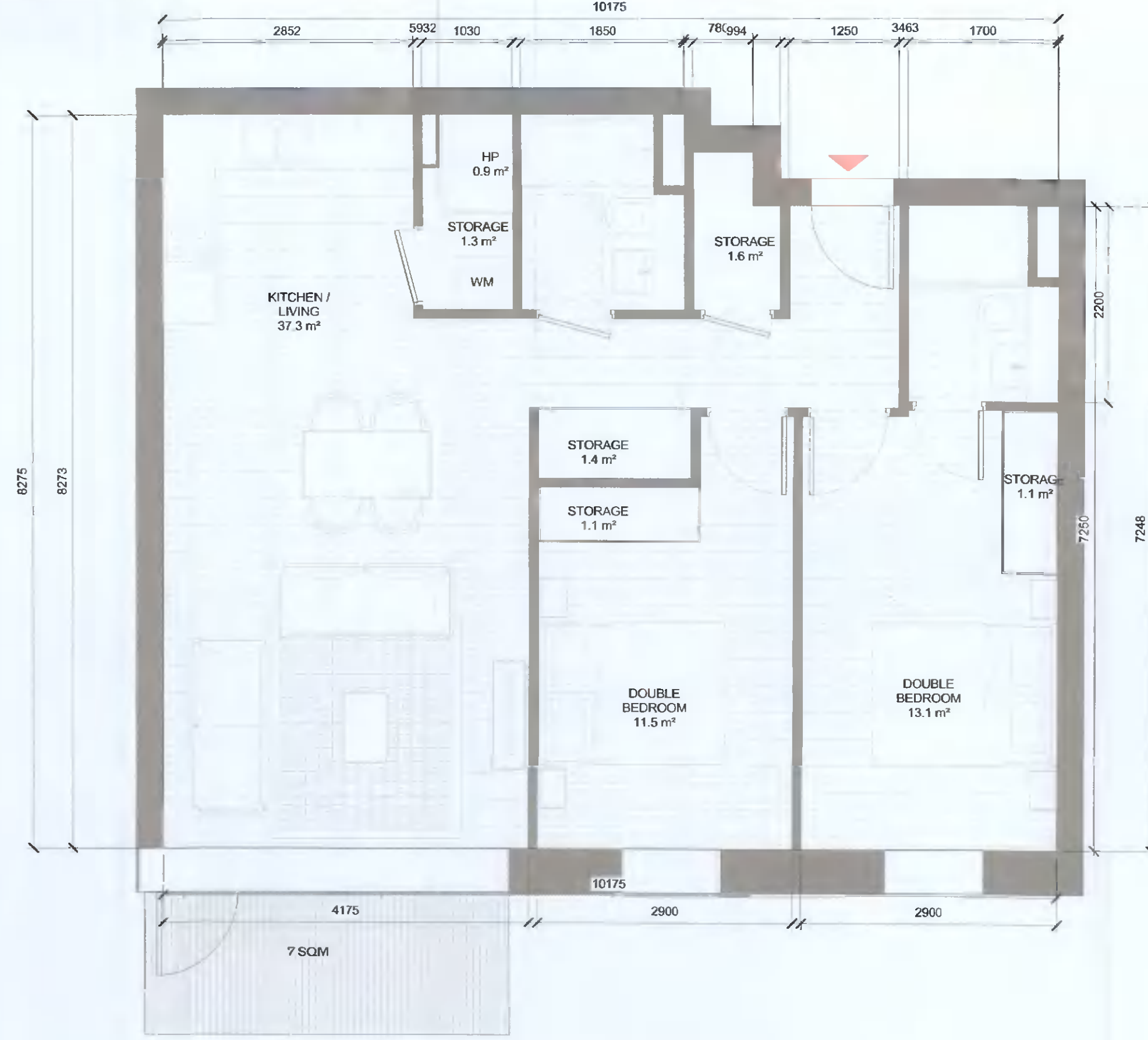


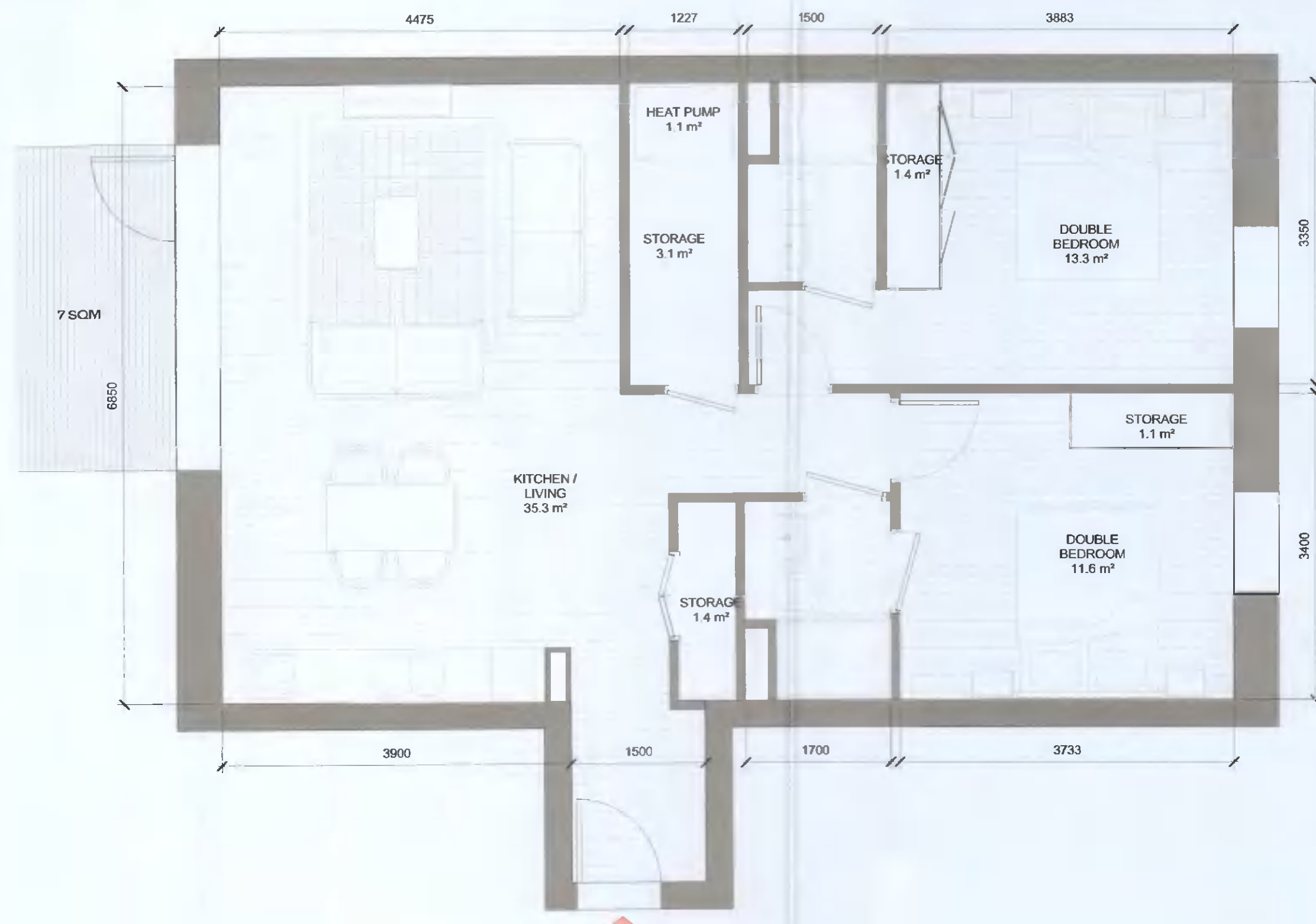
1 T.201_A
1 : 50

T.201_A SPACE REQUIREMENTS												
Apartment Area	Required Apartment Area	Required Area Met	Kitchen - Living Area	Required Kitchen - Living Area	Required Area Met	Total Bedroom Area	Required Total Bedroom Area	Required Area Met	Total Storage Area	Required Total Storage Area	Required Area Met	Heat Pump Area
63.9 m²	63.0 m²	Yes	29.4 m²	28.0 m²	Yes	21.0 m²	21.1 m²	Yes	6.2 m²	5.0 m²	Yes	1.0 m²



2 T.202_A
1 : 50

T.202_A SPACE REQUIREMENTS												
Apartment Area	Required Apartment Area	Required Area Met	Kitchen - Living Area	Required Kitchen - Living Area	Required Area Met	Total Bedroom Area	Required Total Bedroom Area	Required Area Met	Total Storage Area	Required Total Storage Area	Required Area Met	Heat Pump Area
80.3 m²	73.0 m²	Yes	37.3 m²	30.0 m²	Yes	24.6 m²	24.4 m²	Yes	6.5 m²	6.0 m²	Yes	1.0 m²



3 T.203_A
1 : 50

T.203_A SPACE REQUIREMENTS												
Apartment Area	Required Apartment Area	Required Area Met	Kitchen - Living Area	Required Kitchen - Living Area	Required Area Met	Total Bedroom Area	Required Total Bedroom Area	Required Area Met	Total Storage Area	Required Total Storage Area	Required Area Met	Heat Pump Area
81.0 m²	73.0 m²	Yes	35.3 m²	30.0 m²	Yes	24.9 m²	24.4 m²	Yes	7.0 m²	6.0 m²	Yes	1.1 m²

4 T.204_A
1 : 50

T.204_A SPACE REQUIREMENTS												
Apartment Area	Required Apartment Area	Required Area Met	Kitchen - Living Area	Required Kitchen - Living Area	Required Area Met	Total Bedroom Area	Required Total Bedroom Area	Required Area Met	Total Storage Area	Required Total Storage Area	Required Area Met	Heat Pump Area
74.6 m²	73.0 m²	Yes	32.2 m²	30.0 m²	Yes	25.1 m²	24.4 m²	Yes	6.0 m²	6.0 m²	Yes	0.9 m²

ALL DIMENSIONS TO BE CHECKED ON SITE
NO DIMENSIONS TO BE SCALED FROM THIS DRAWING
DRAWING IS TO BE READ IN CONJUNCTION WITH RELEVANT CONSULTANTS DRAWINGS

APARTMENT TYPE SUMMARY										
Count	APARTMENT TYPE		DESCRIPTION			APARTMENT AREA				
	Type Name	Unit Type	Aspect	Orientation	Area sqm	Min. Area				
38	T.101_A	1B-2P	SINGLE		50.7	45.0				
8	T.102_A	1B-2P	SINGLE	W	48.7	45.0				
22	T.103_A	1B-2P	DUAL	N/E	48.0	45.0				
1	T.104_A	1B-2P	DUAL	N/E	54.6	45.0				
5	T.105_CF	1B-2P	SINGLE	E	51.0	45.0				
2	T.106_SB	1B-2P	SINGLE	E	46.7	45.0				
1	T.107_A	1B-2P	SINGLE	W	49.5	45.0				
1	T.108_SB	1B-2P	DUAL	N/E	49.6	45.0				
3	T.109_CF	1B-2P	SINGLE	E	48.4	45.0				
1	T.110_CF	1B-2P	DUAL	N/W	50.8	45.0				
1:82										
9	T.201_A	2B-3P	SINGLE	W	63.9	63.0				
24	T.202_A	2B-4P			80.3	73.0				
3	T.203_A	2B-4P	DUAL	E/W	81.0	73.0				
5	T.204_A	2B-4P	SINGLE	E	74.6	73.0				
12	T.205_A	2B-4P			76.0	73.0				
3	T.206_A	2B-4P	DUAL	E/W	80.7	73.0				
2	T.207_A	2B-3P	SINGLE	E	68.0	63.0				
8	T.208_A	2B-4P	DUAL	N/W	80.3	73.0				
5	T.209_A	2B-4P	DUAL	S/E	80.3	73.0				
6	T.210_A	2B-3P	DUAL		64.5	63.0				
5	T.211_A	2B-4P	DUAL	S/E	75.5	73.0				
3	T.212_A	2B-4P	DUAL	N/W	80.9	73.0				
3	T.213_A	2B-4P	DUAL	N/E	74.3	73.0				
3	T.214_A	2B-4P	SINGLE	S	76.3	73.0				
2	T.215_A	2B-4P	DUAL	S/W	81.6	73.0				
3	T.220_CF	2B-4P			73.0	73.0				
1	T.221_CF	2B-4P	DUAL	S/W	74.1	73.0				
1	T.223_CF	2B-4P	DUAL	S/E	76.1	73.0				
1	T.224_CF	2B-4P	SINGLE	S	73.6	73.0				
1	T.225_CF	2B-3P	DUAL	S/W	63.6	63.0				
1	T.226_SB	2B-4P	SINGLE	E	78.6	73.0				
1	T.227_SB	2B-3P	DUAL	N/E	70.8	63.0				
2:102										
1	T.301_SB	3B-5P	DUAL	S/E	99.7	90.0				
3:1										
Grand total: 185										

AS PERMITTED UNDER
REG. REF. SDZ21A/0007

POI	REV	DATE	ISSUED FOR PLANNING APPROVAL	DESCRIPTION	RJ	EA
					CHK	DRN

STATUS CODE DESCRIPTION
ISSUED FOR PLANNING APPROVAL

CLIENT
QUINTAIN IRELAND LTD.

PROJECT
ADAMSTOWN STATION BLOCK G

DRAWING
2 BED APARTMENT TYPES SHEET 1

PROJECT NUMBER: 550749 DATE: 13/04/21

SCALE@ A1: 1:50 DRAWN/CHECKED: RU/DB

STATUS CODE: A1 DRAWING NUMBER: ADC-HJL-G-ZZ-DR-A-8003 REVISION: P01

Henry J Lyons
Architecture + Interiors
henryjlyons.com +353 1 888 3333 info@henryjlyons.com 51-54 Pearse Street Dublin D02 KA66