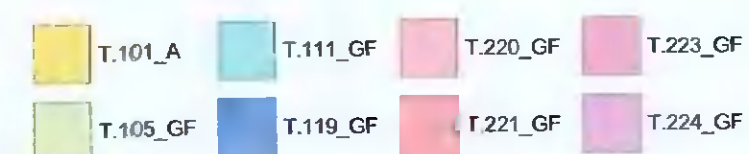


APARTMENT TYPE SUMMARY						
Count	APARTMENT TYPE		DESCRIPTION	Orientation	APARTMENT AREA	
	Type Name	Unit Type			Area sqm	Min. Area
54	T.101_A	1B-2P	SINGLE		50.7	45.0
6	T.102_A	1B-2P	SINGLE	W	48.7	45.0
25	T.103_A	1B-2P			48.0	45.0
1	T.104_A	1B-2P	DUAL	N/E	54.6	45.0
5	T.105_CF	1B-2P	SINGLE	E	51.0	45.0
3	T.106_SB	1B-2P	SINGLE	E	46.3	45.0
1	T.107_A	1B-2P	SINGLE	W	49.5	45.0
1	T.108_SB	1B-2P	DUAL	N/E	51.2	45.0
3	T.109_CF	1B-2P	SINGLE	W	48.4	45.0
1	T.109_SB	1B-2P	SINGLE	E	56.7	45.0
1	T.110_SB	1B-2P	DUAL	S/E	54.5	45.0
1	T.111_CF	1B-2P	SINGLE	S	48.4	45.0
1	T.119_CF	1B-2P	DUAL	N/W	50.8	45.0
1:85						
9	T.201_A	2B-3P	SINGLE		63.9	63.0
30	T.202_A	2B-4P			80.3	73.0
3	T.203_A	2B-4P	DUAL	E/W	81.0	73.0
2	T.204_A	2B-4P	SINGLE	E	74.6	73.0
12	T.205_A	2B-4P			76.0	73.0
3	T.206_A	2B-4P	DUAL	E/W	80.7	73.0
2	T.207_A	2B-3P	SINGLE	E	68.0	63.0
8	T.208_A	2B-4P	DUAL	N/W	80.3	73.0
4	T.209_A	2B-4P	DUAL	S/E	80.3	73.0
5	T.211_A	2B-4P	DUAL	S/E	75.5	73.0
3	T.212_A	2B-4P	DUAL		80.9	73.0
3	T.213_A	2B-4P	DUAL		74.3	73.0
3	T.214_A	2B-4P	SINGLE	S	76.3	73.0
1	T.215_A	2B-4P	DUAL	S/W	81.6	73.0
1	T.216_A	2B-4P	DUAL	S/W	76.1	73.0
4	T.220_CF	2B-4P			73.0	73.0
1	T.221_CF	2B-4P	DUAL	S/W	75.5	73.0
1	T.223_CF	2B-4P	DUAL	S/E	76.1	73.0
1	T.224_CF	2B-4P	SINGLE	S	73.6	73.0
2	T.227_SB	2B-3P	DUAL		69.0	63.0
2:98						
2	T.301_A	3B	DUAL	N/E	98.6	90.0
3:2						
Grand total: 185						



APARTMENT TYPES



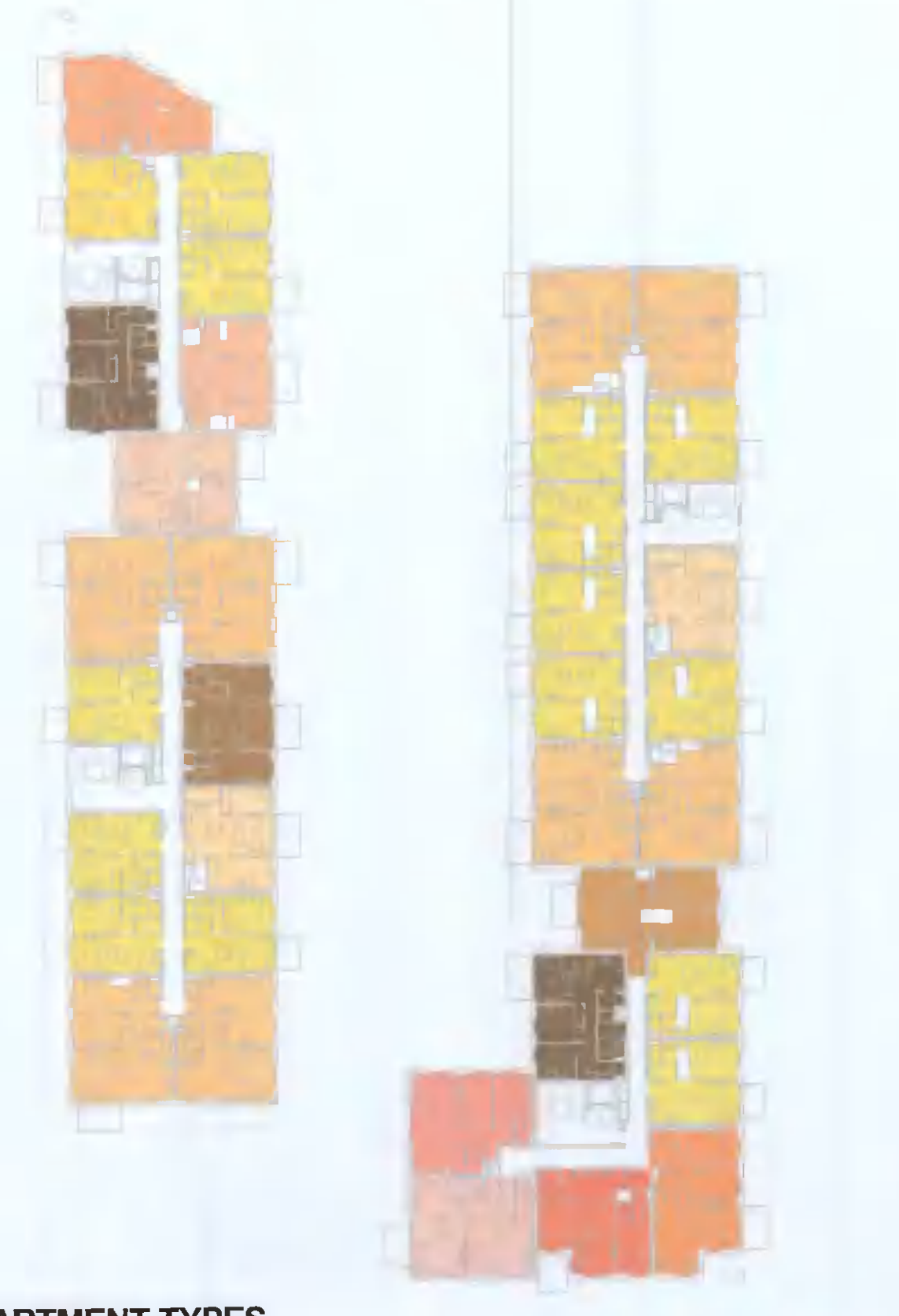
00 - APARTMENT TYPES
1 : 500



APARTMENT TYPES



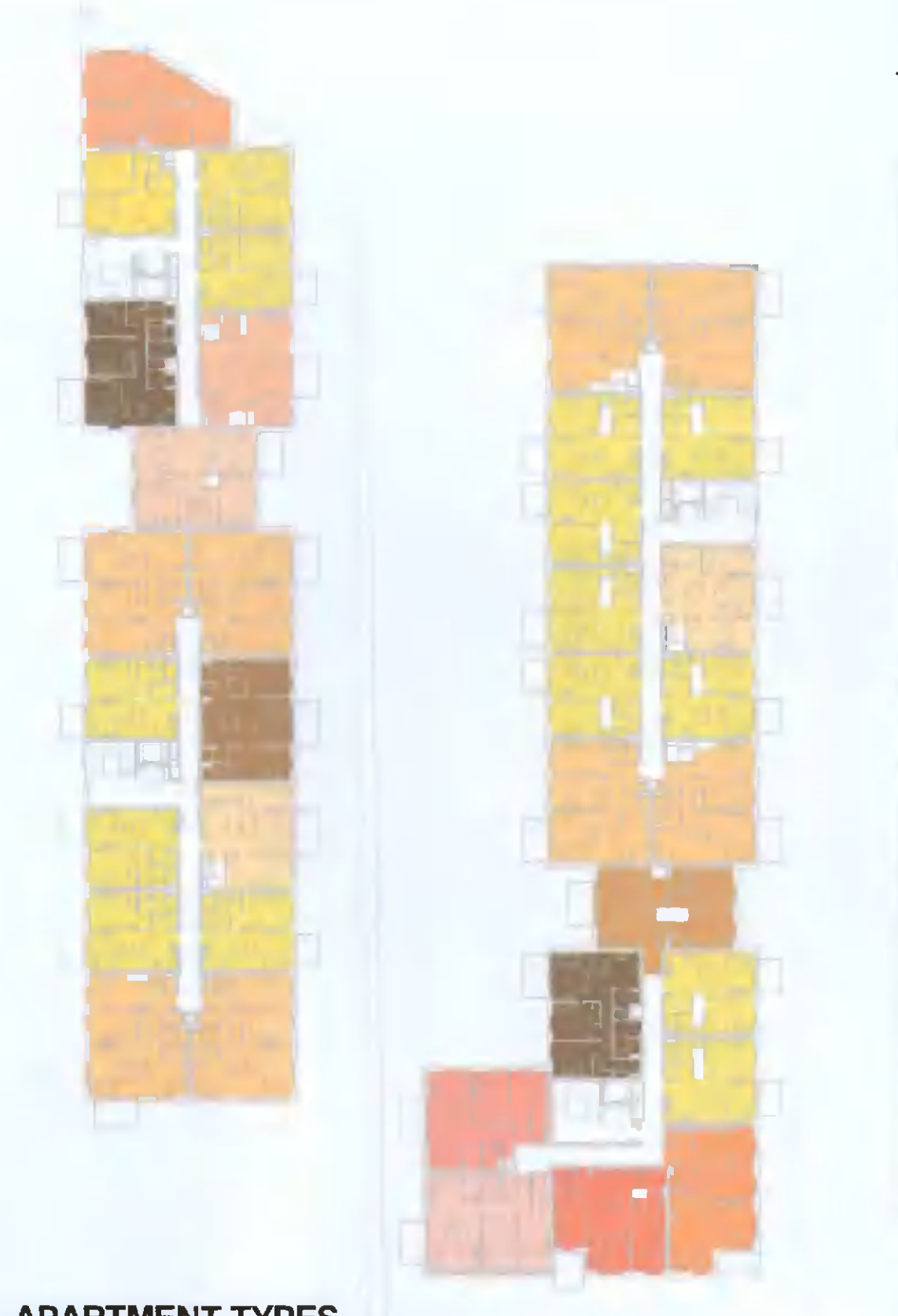
01 - APARTMENT TYPES
1 : 500



APARTMENT TYPES



02 - APARTMENT TYPES
1 : 500

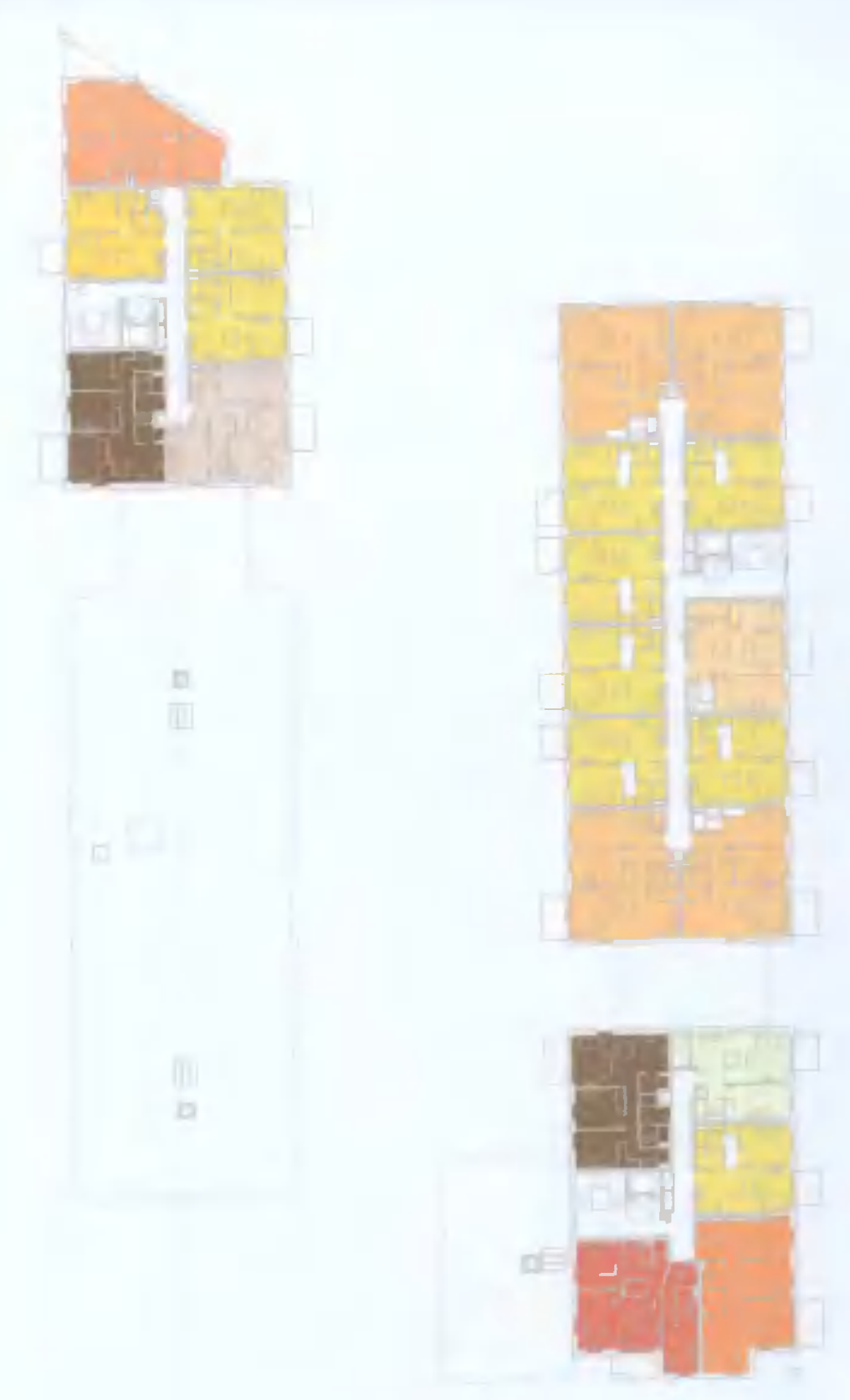


APARTMENT TYPES

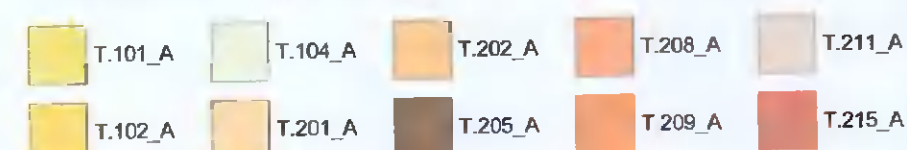


03 - APARTMENT TYPES
1 : 500

AMENDMENTS TO
ADDRESS RFI 0796
DATED 15th JUNE 2021



APARTMENT TYPES



04 - APARTMENT TYPES
1 : 500



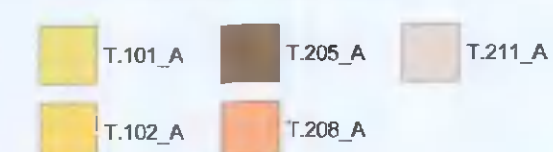
APARTMENT TYPES



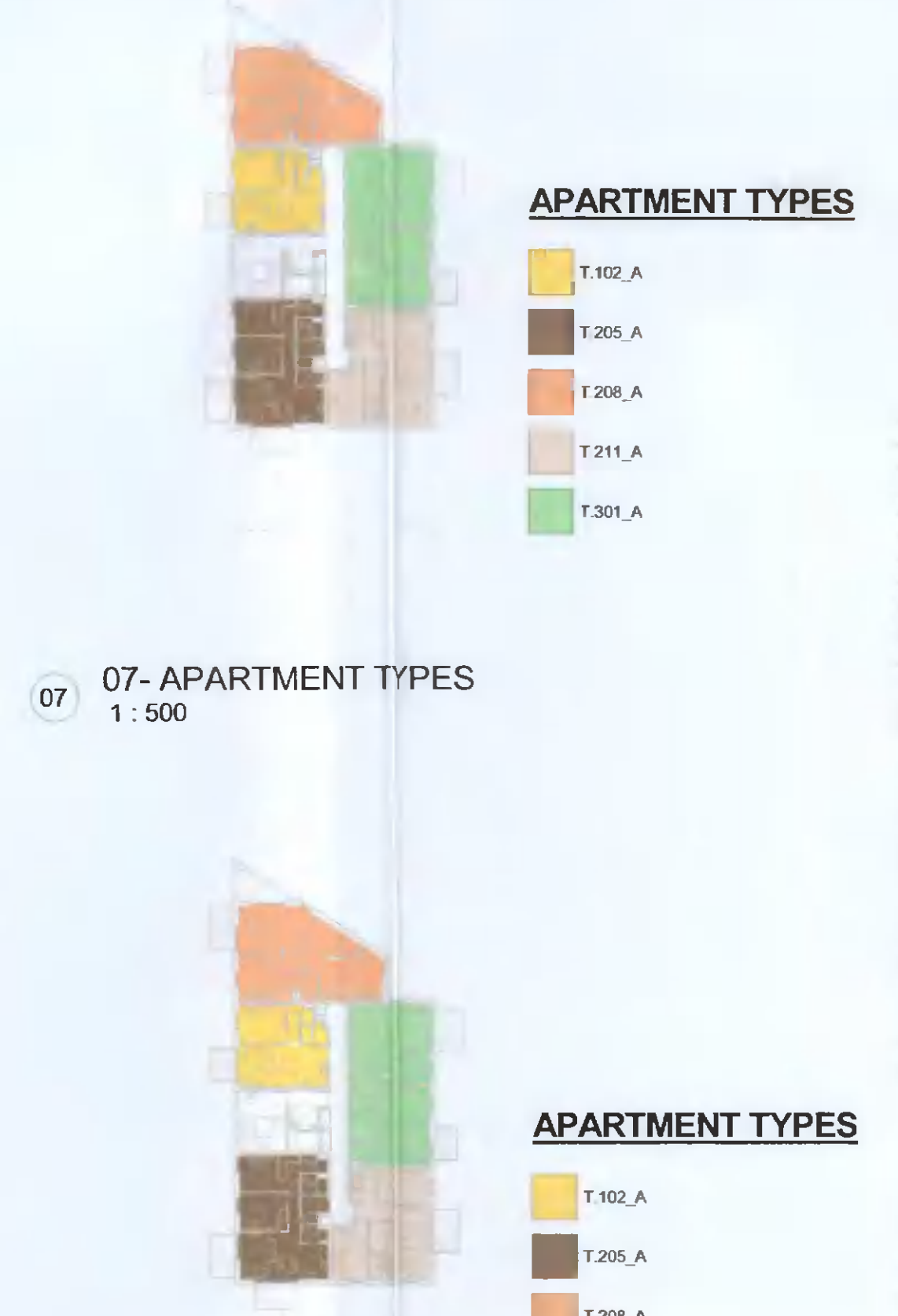
05 - APARTMENT TYPES
1 : 500



APARTMENT TYPES



06 - APARTMENT TYPES
1 : 500



APARTMENT TYPES



07 - APARTMENT TYPES
1 : 500

APARTMENT TYPES



08 - APARTMENT TYPES
1 : 500

AS PERMITTED UNDER
REG. REF. SD221A/0007

REV	DATE	DESCRIPTION	CHK	DRN
P02	13/08/2021	ISSUED FOR FURTHER INFORMATION	DB	EA
P01	13/04/2021	ISSUED FOR PLANNING APPROVAL	RJ	EA

STATUS CODE DESCRIPTION
ISSUED FOR PLANNING APPROVAL

CLIENT
QUINTAIN IRELAND LTD.

PROJECT
ADAMSTOWN STATION BLOCK G

DRAWING
APARTMENT TYPES KEY PLANS

PROJECT NUMBER	DATE	REVISION
950749	13/08/21	P02
SCALE@ A1:	DRAWN/CHECKED:	
As indicated	RU / DB	
STATUS CODE:	DRAWING NUMBER	REVISION
A1	ADC-HJL-G-ZZ-DR-A-8000	P02

Henry J Lyons