

# All-Ireland Pollinator Plan 2015-2020

Dec.

Nov.

Oct.

Sept.

August

July

June

May

Apr.

Mar.

Feb.

Jan.

## Meadow Mixture For Clay Soils

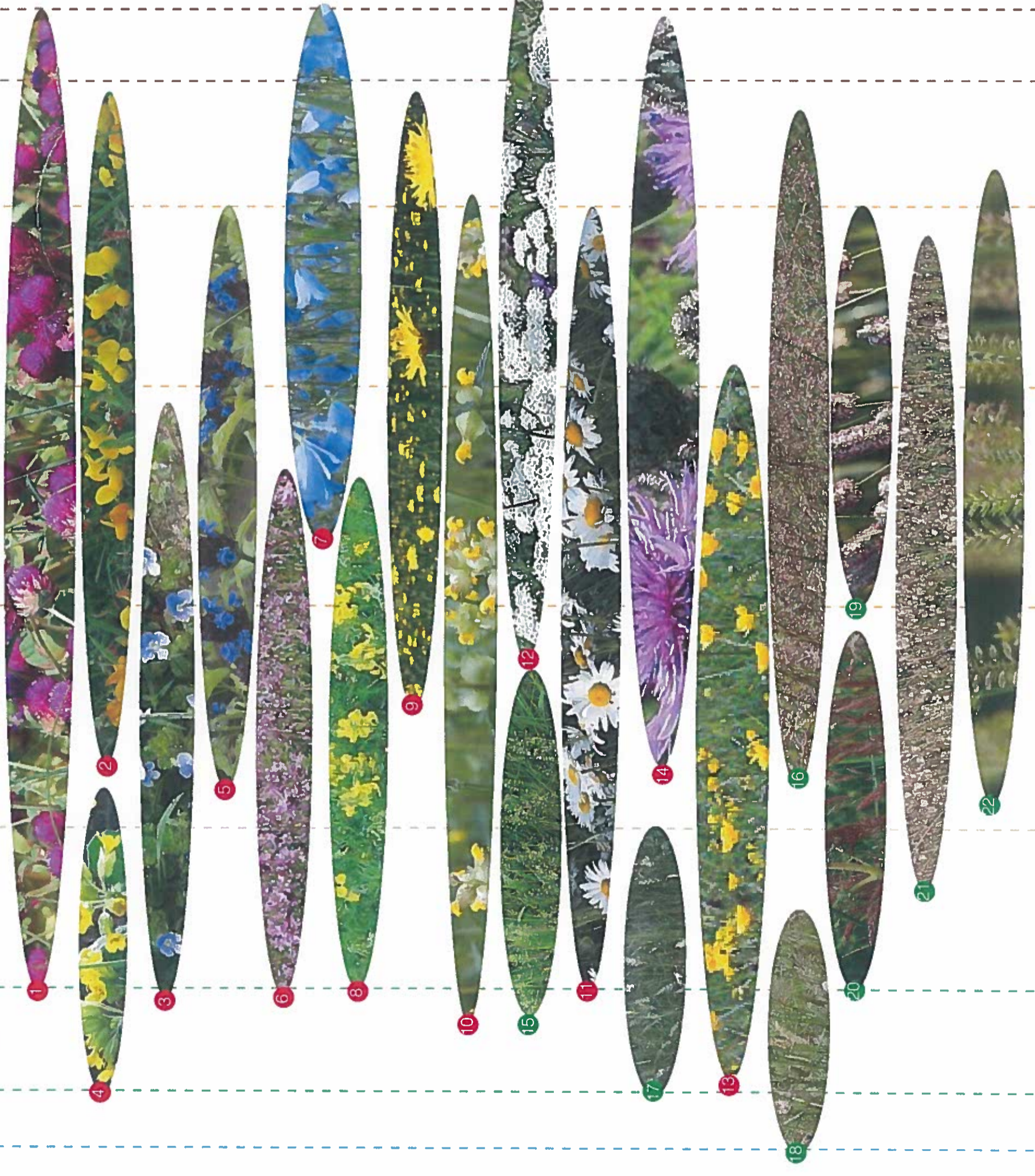
The grassland in the area generally is relatively species rich with a number of species adapted to growing on soils with a high clay content. The following species are proposed to produce a species rich grassland attractive for pollinators through the season and suitable for a soil that is prone to waterlogging.

### Wild Flowers

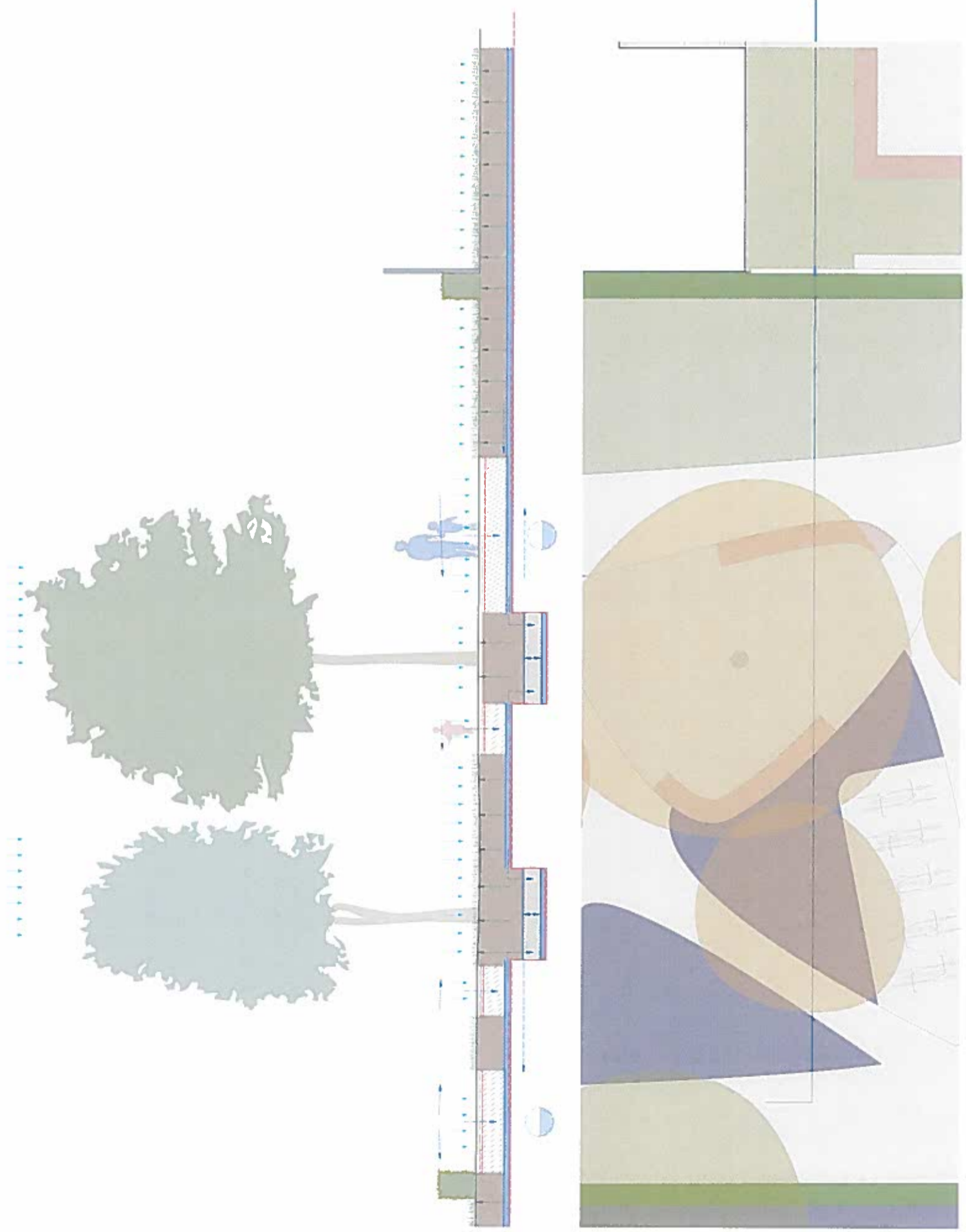
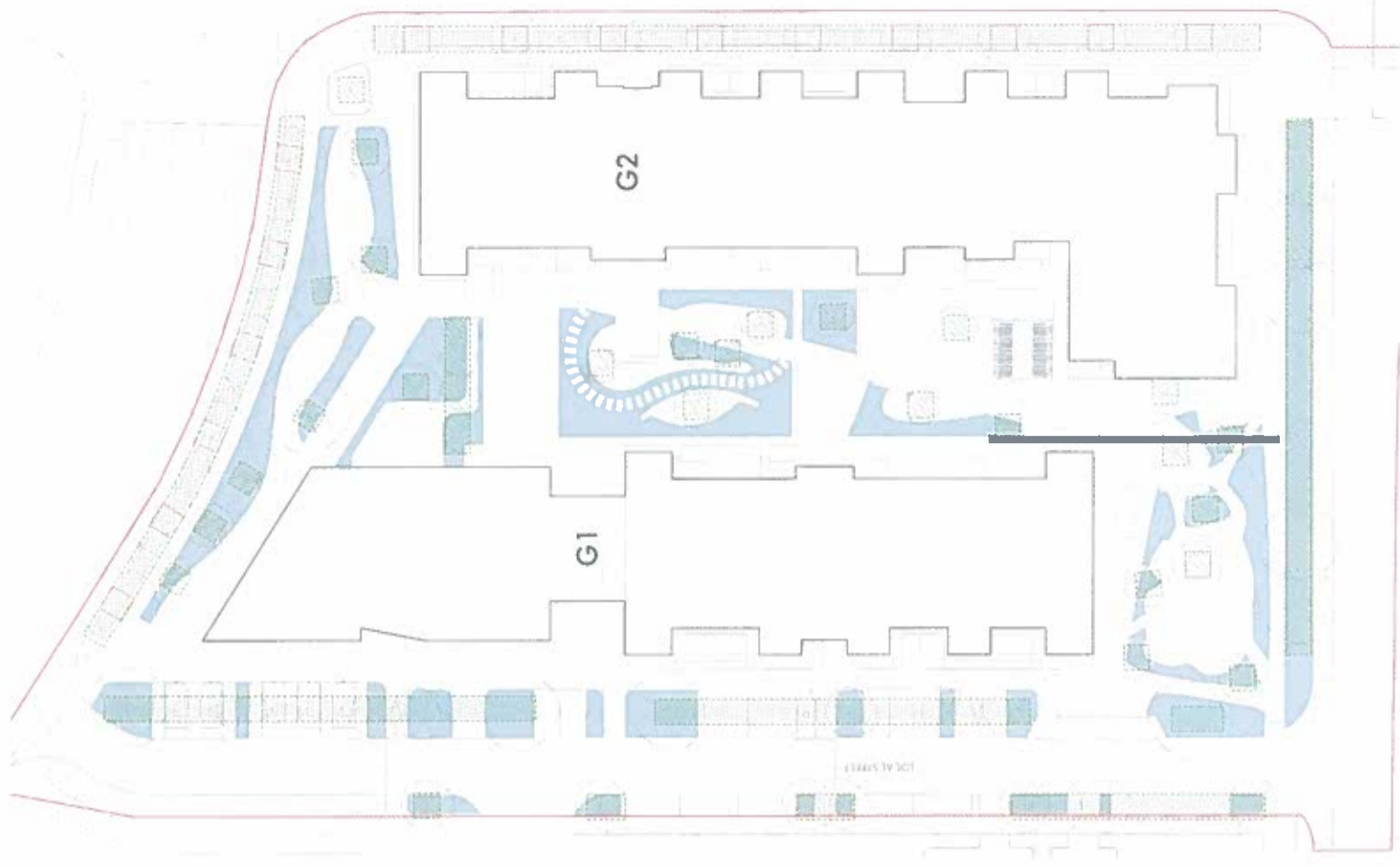
- 1 Wild Red Clover (*Trifolium pratense*)
- 2 Birdsfoot Trefoil (*Lotus corniculatus*)
- 3 Germander Speedwell (*Veronica chamaedrys*)
- 4 Cowslip (*Primula Veris*)
- 5 Selfheal (*Prunella vulgaris*)
- 6 Ragged-Robin (*Silene flos-cuculi*)
- 7 Harebell (*Campanula rotundifolia*)
- 8 Meadow Vetchling (*Lathyrus pratensis*)
- 9 Cat's-ear (*Hypochaeris radicata*)
- 10 Yellow rattle (*Rhinanthus minor*)
- 11 Oxeye daisy (*Leucanthemum vulgare*)
- 12 Yarrow (*Achillea millefolium*)
- 13 Meadow Buttercup (*Ranunculus acris*)
- 14 Common knapweed (*Centaurea nigra*)

### Grasses

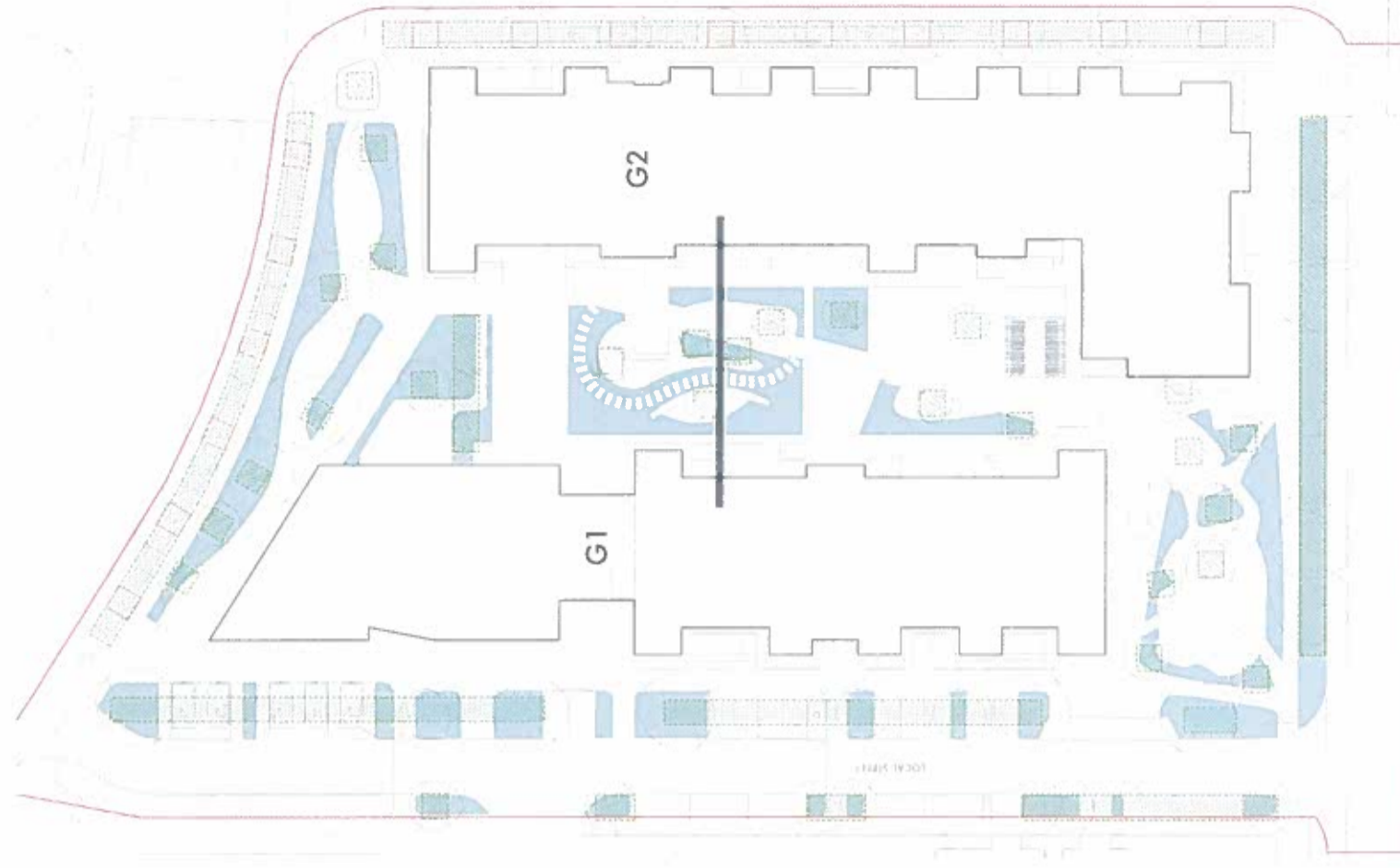
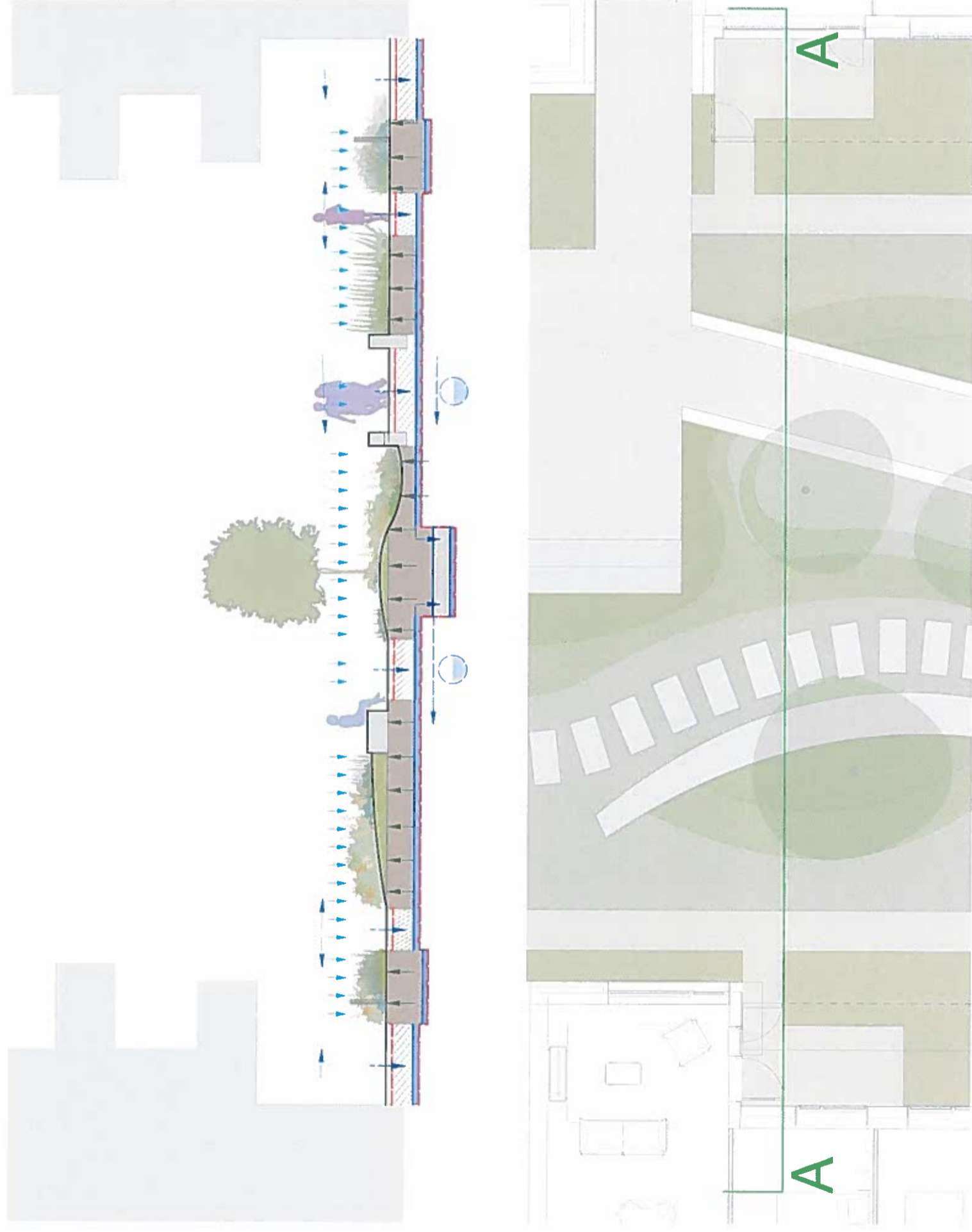
- 15 Smooth Meadow-grass *Poa pratensis*
- 16 Meadow Foxtail (*Alopecurus pratensis*)
- 17 Sweet Vernal-grass (*Anthoxanthum odoratum*)
- 18 Common Bent (*Agrostis capillaris*)
- 19 Timothy-grass (*Phleum pratense*)
- 20 Red Fescue (*Festuca rubra*)
- 21 Quaking Grass (*Briza media*)
- 22 Crested Dogs-tail (*Cynosurus cristatus*)



02 SITE STRATEGY  
SUDS OPPORTUNITIES



02 SITE STRATEGY  
SUDS OPPORTUNITIES



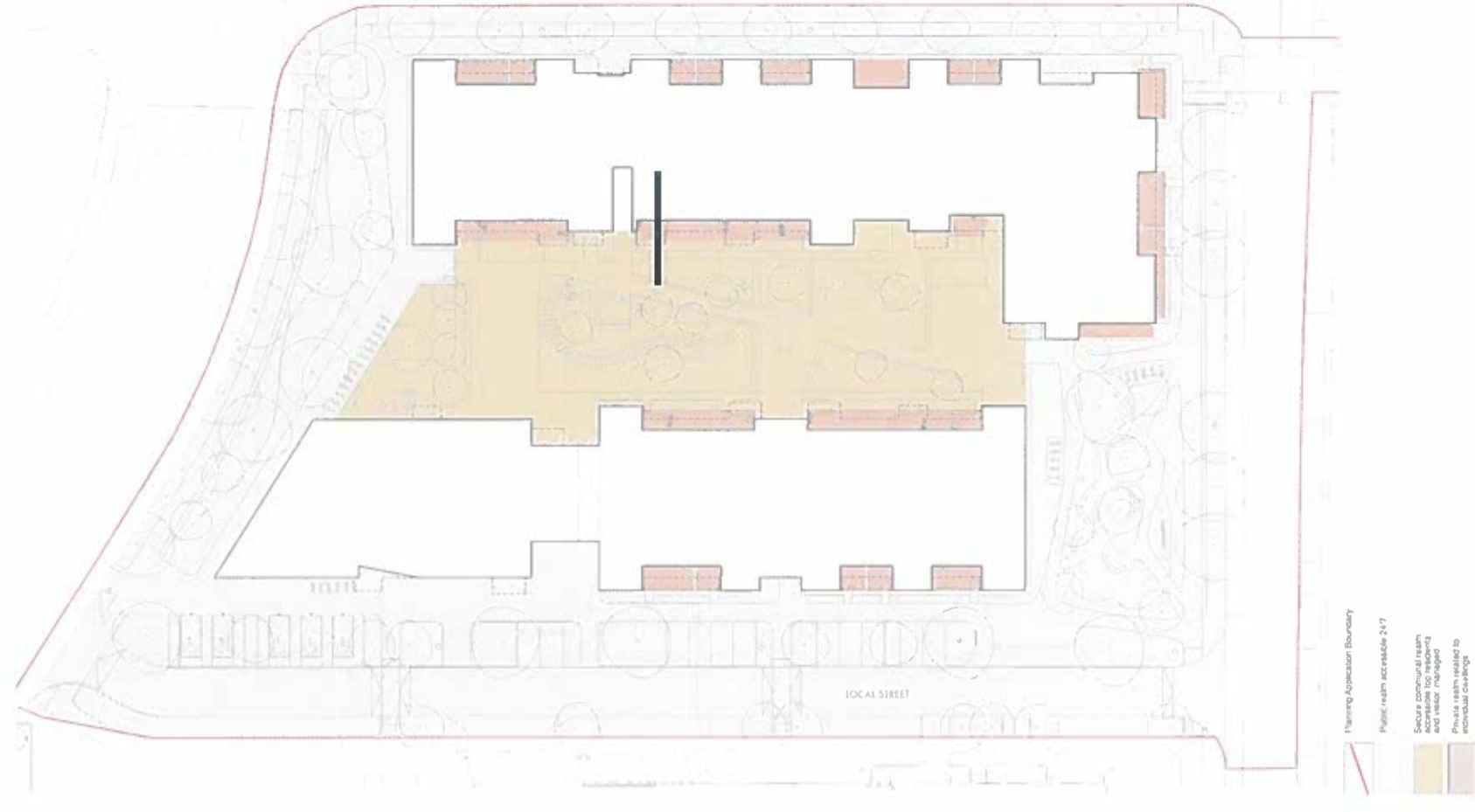
## 02 SITE STRATEGY

### COMMUNAL AND PRIVATE SPACE INTERCHANGE

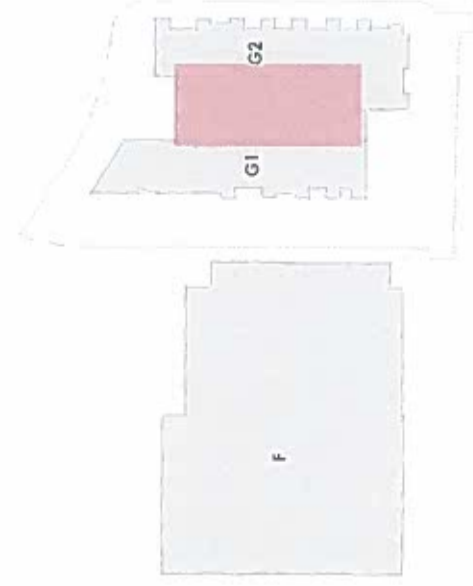
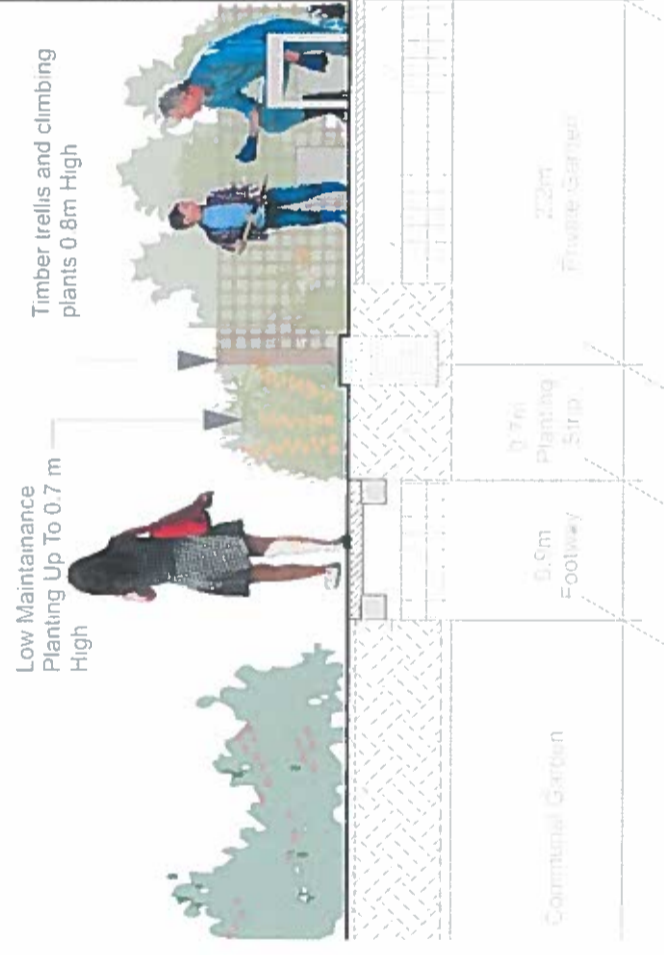
#### Communal And Private Open Spaces

The communal gardens are designed to meet requirements for communal spaces and provide viable space for private back gardens.

The communal path is set back from the private gardens and separated by planted borders and mesh fencing. The edge planting consists of an evergreen shrubs, climbers and mixed herbaceous planting to provide privacy.



## BLOCK G



02 SITE STRATEGY

COMMUNAL SPACE DETAIL - MATERIALITY



Resin Bound Surfacing



Concrete Stepping Stones



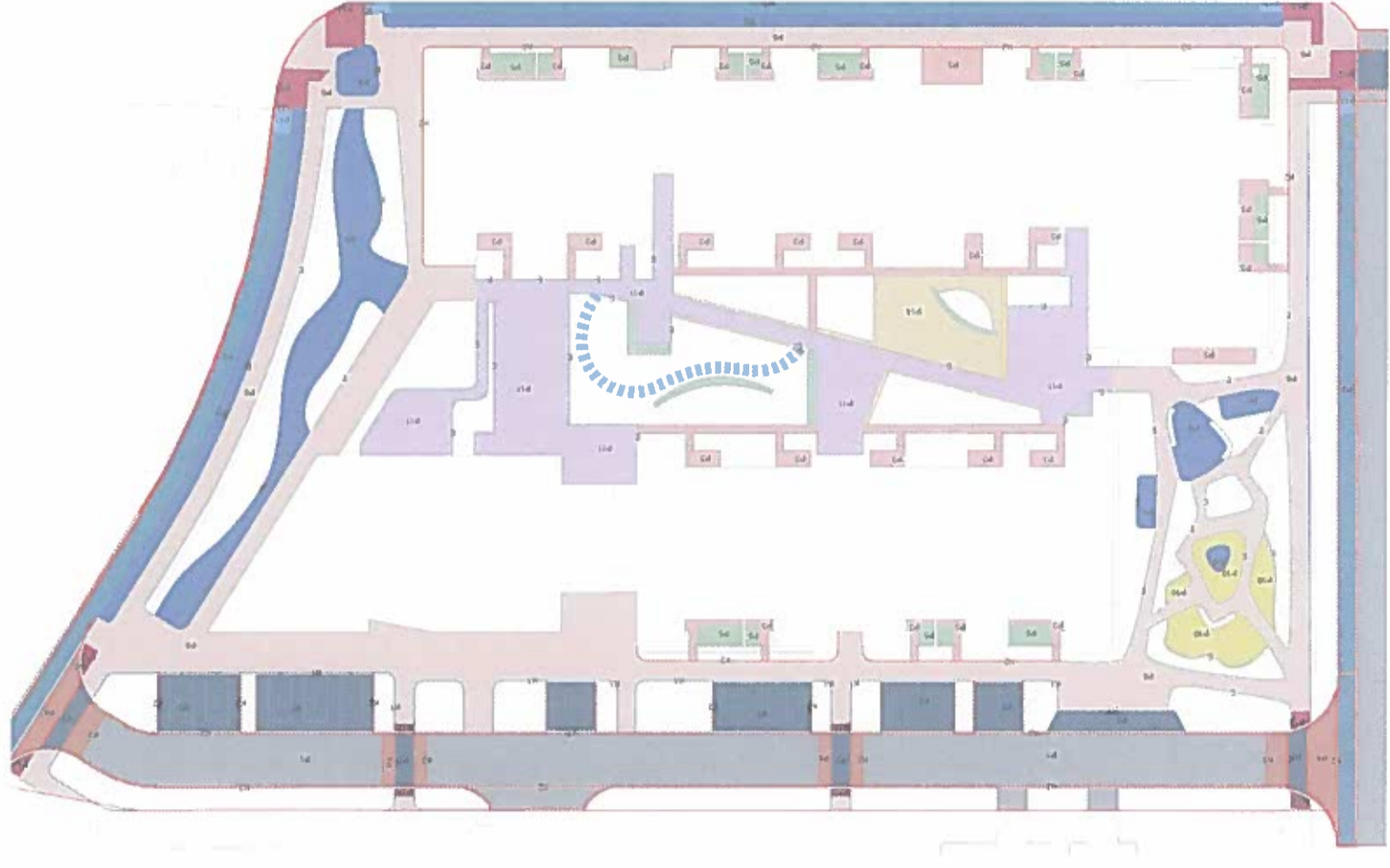
EPDM



Textured Concrete Flags



Textured Concrete Finish For  
All Concrete Structures



02 SITE STRATEGY  
COMMUNAL SPACE DETAIL - FURNITURE



Concrete Terraces With Timber Top



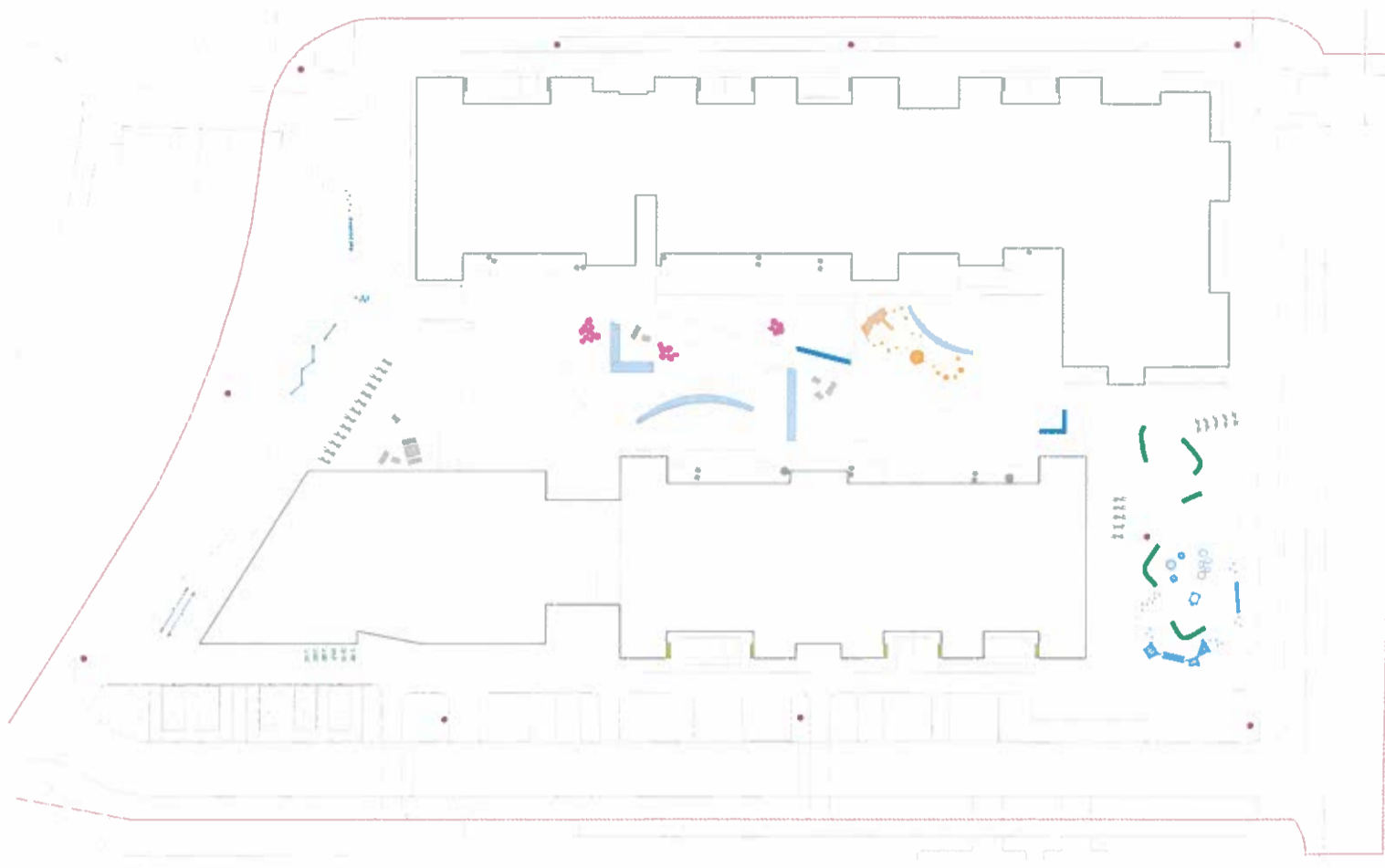
Wall-Mounted Timber Seat



Concrete Arch Seat



Timber Pergola With Planter



02 SITE STRATEGY  
COMMUNAL SPACE DETAIL - TREES



Acer ginnala



Sorbus aucuparia



Amelanchier x grandiflora



Sorbus aucuparia



Prunus subhirtella



Pinus mugo

Domestic Size Tree 4-6m



Prunus padus 'Albertii'



Acer campestre 'William Caldwell'

Compact Street Tree 2-3m



The proposed trees shall be a mixture of 18-20cm, 20-25cm and 30-35cm resourced from Irish Grown Nursery Stock. For specification refer to Drawing LL591 - 150-0041 - GA Proposed Tree Planting Plan.

02 SITE STRATEGY

COMMUNAL SPACE DETAIL - LOW LEVEL PLANTING



Low maintenance ornamental planting



Planting for boundary treatment and screening to private gardens



Taller planting for wind mitigation



Woodland-edge herbaceous and shrub planting with seasonal interest





## 02 SITE STRATEGY PLAY AREAS



**Doorstep Playable Space - 0 to 5 years**

These will be play features for under 5s with the possibility of unsupervised play. The play equipment will provide activities that involve climbing, imitation, and dramatic play, like activity panels, slides, climbers, sandboxes. These will be mainly located within building courtyards.



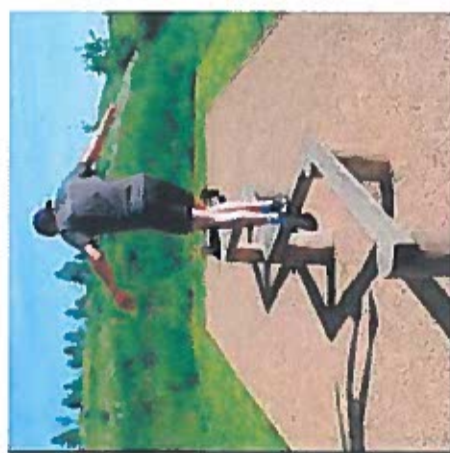
**Local Playable Space - 5 to 12 years**

These will include play equipment design for this specific age group, such as climbable and balancing objects, landforms, elements for imaginative play, as well as places to sit and talk.



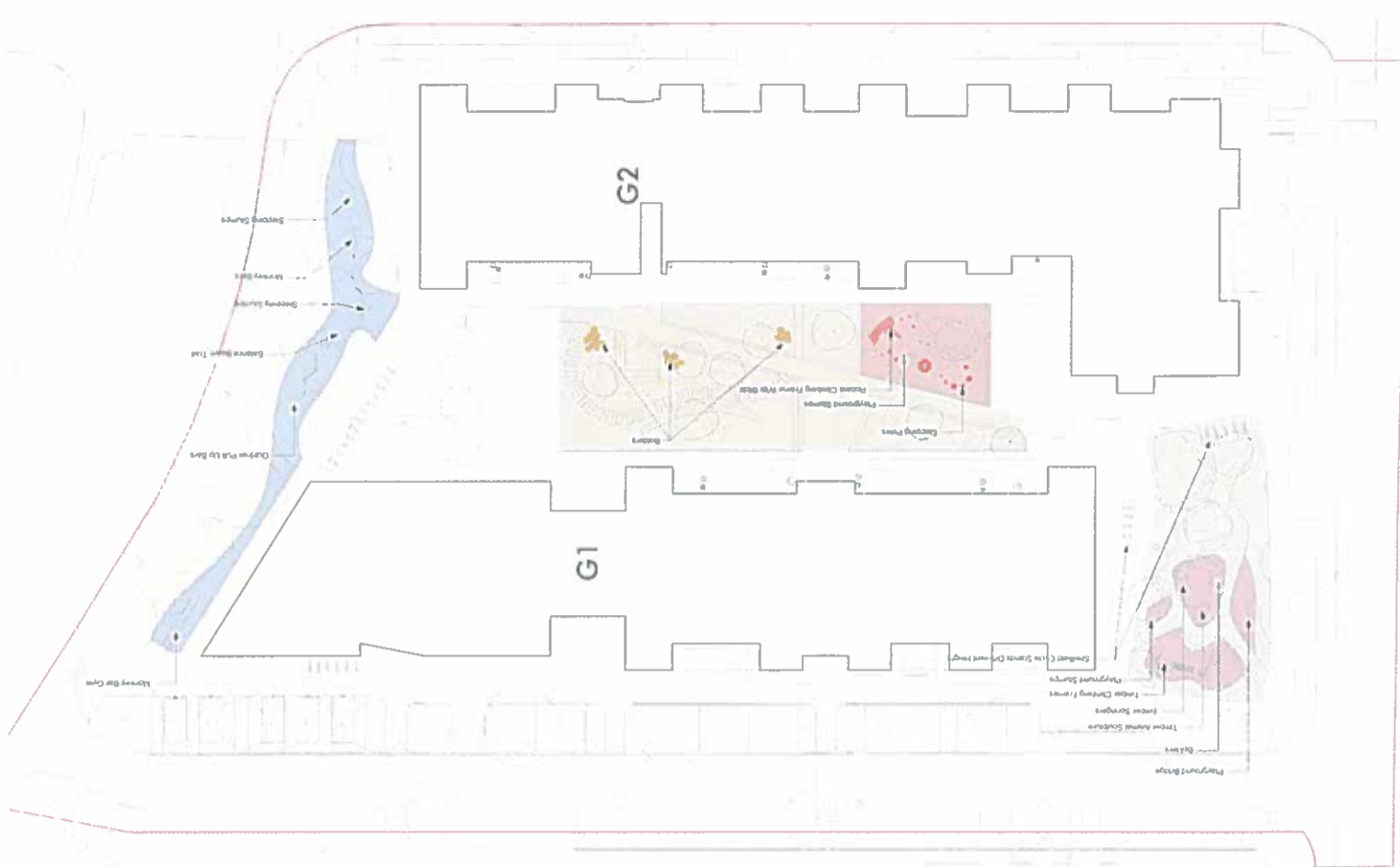
**Youth Space - 12+ years**

Spaces and facilities that allow for fitness activities



**Playable Space - All Ages**

The proposed green space includes mounds and natural boulders that can be explored by children of different ages encouraging adventurous and imaginative



Playground equipment should meet European Playground Equipment Standards (EN 1176)

02 SITE STRATEGY  
IMPLEMENTATION OF LANDSCAPE WORKS

DURING CONSTRUCTION PERIOD 24 MONTHS

