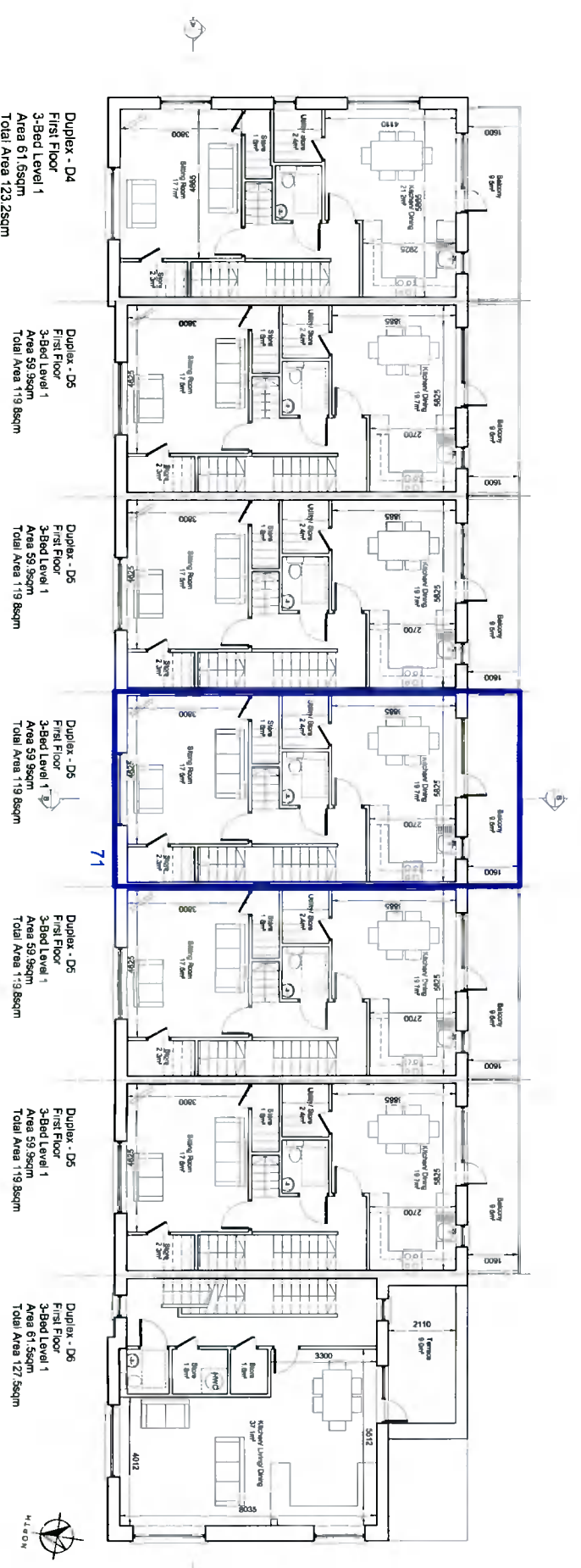
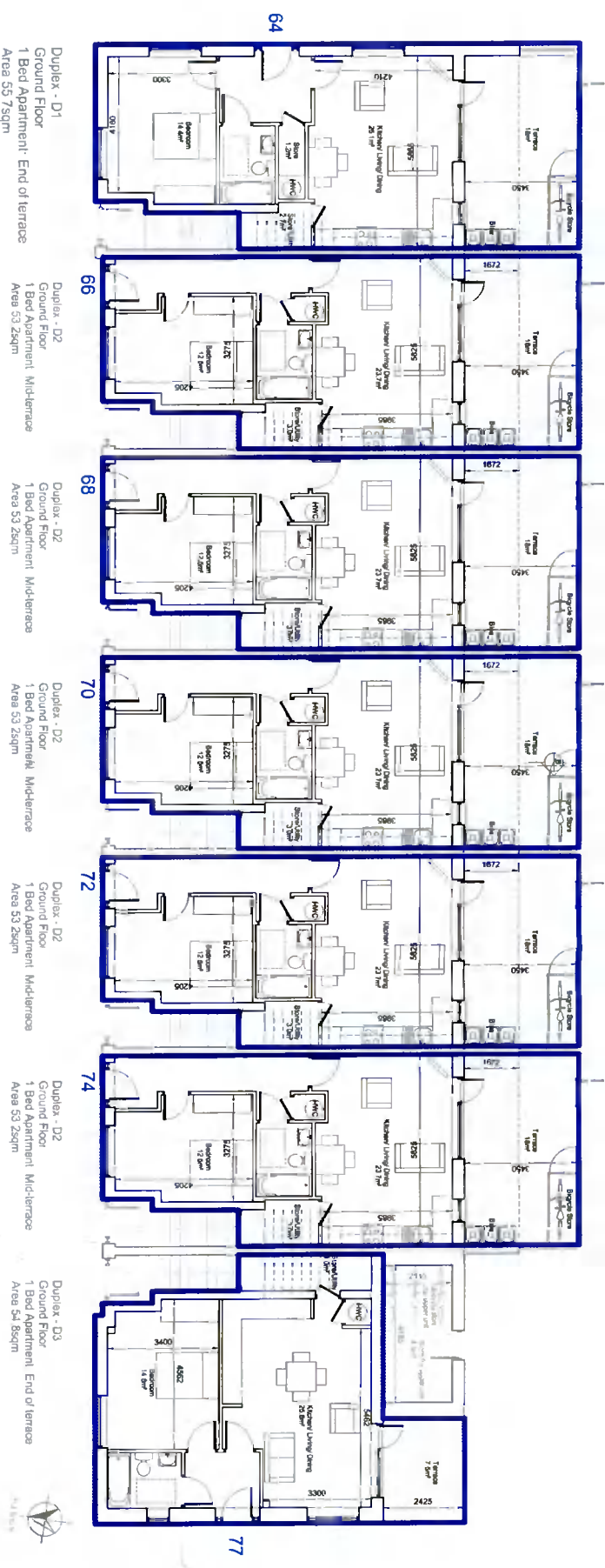
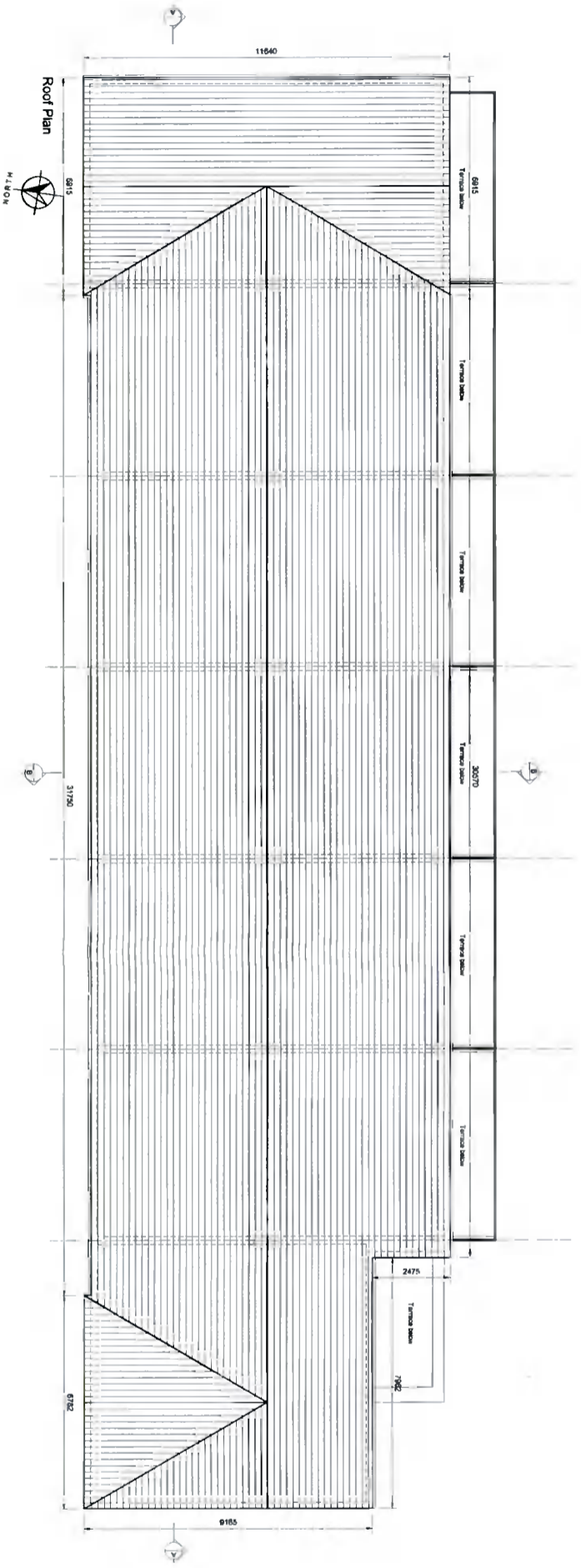
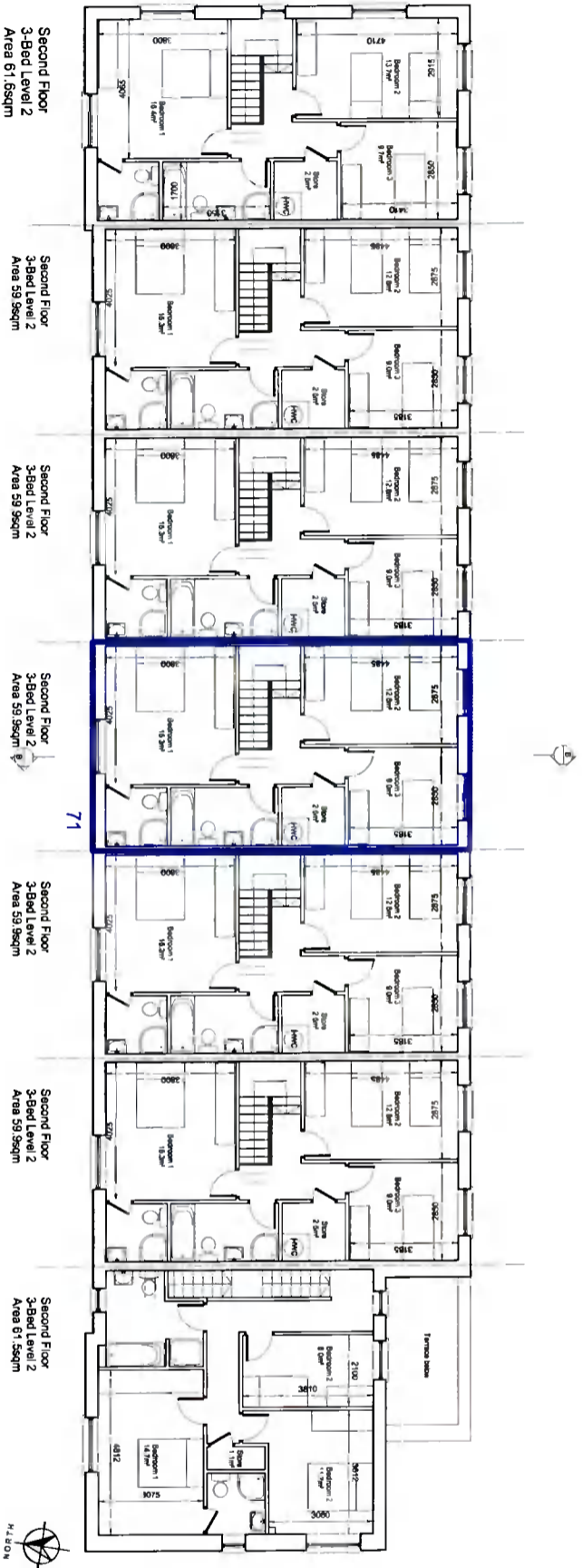


- 1. The drawing is copyright.
- 2. Do not scale the drawing.
- 3. Errors and omissions to be mentioned in the notes to the architect.
- 4. All dimensions to be checked on site.
- 5. To be read with relevant European drawings.



revisions	date	initials
description		
DUPLEX BLOCK Part V Units GROUND & FIRST FLOOR PLANS		
drawing no	2112-P-DP-100 Part V	
scale	1:200@A3	
job	Proposed Residential Development at Gordon Park	
client	Greenwalk Development Ltd.	
issue	PLANNING	
CONROY CROWE KELLY ARCHITECTS 65 MERLION SQUARE DUBLIN 2 PHONE 66139901 FAX 67657715 E-MAIL info@ck.ie		

- © The drawing is copyright
1. Do not scale this drawing.
 2. Errors and omissions to be immediately notified by Architects.
 3. All dimensions to be checked on site.
 4. To be read with technical Engineering drawings.



Revisions

Description

DUPLEX BLOCK
Part V Units

SECOND & ROOF
FLOOR PLANS

Client: Greenwalk Development Ltd.

Issue: PLANNING

Job: Proposed Residential Development at Gordon Park

Scale: 1:200@A3

Date: SEPT 21

Drawn: AC

Checked: PMV

Drawing no: 2112-P-DP-101 Part V

Grid ref: 120212 - Gordon Park 12 - Planning Dublin 15

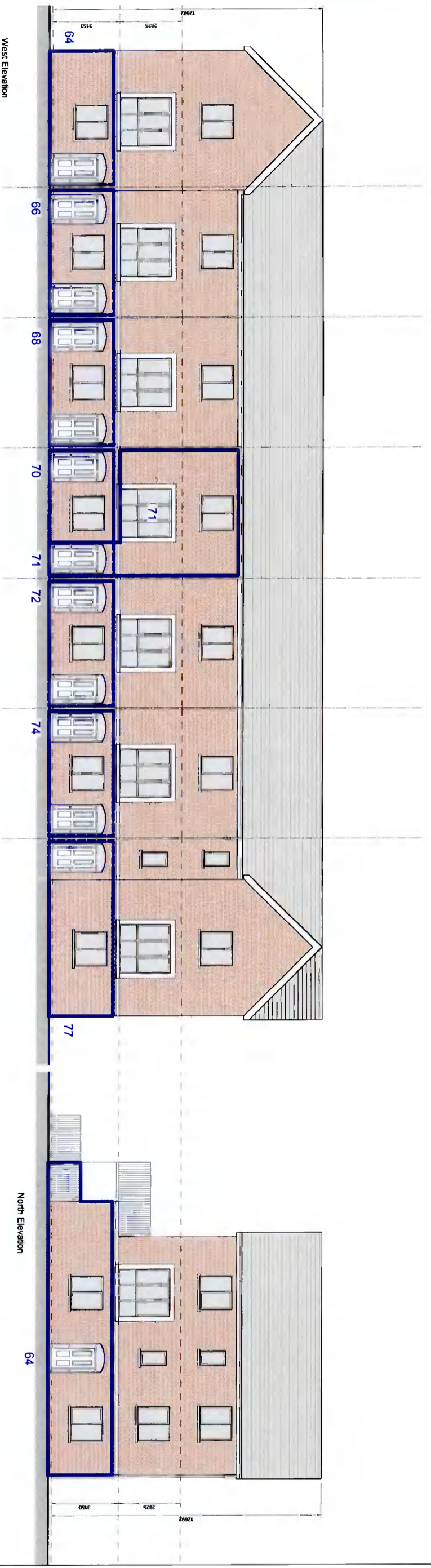
Client: Greenwalk Development Ltd.

Issue: PLANNING

CONROY CROWE KELLY
ARCHITECTS
65 MERLION SQUARE
DUBLIN 2

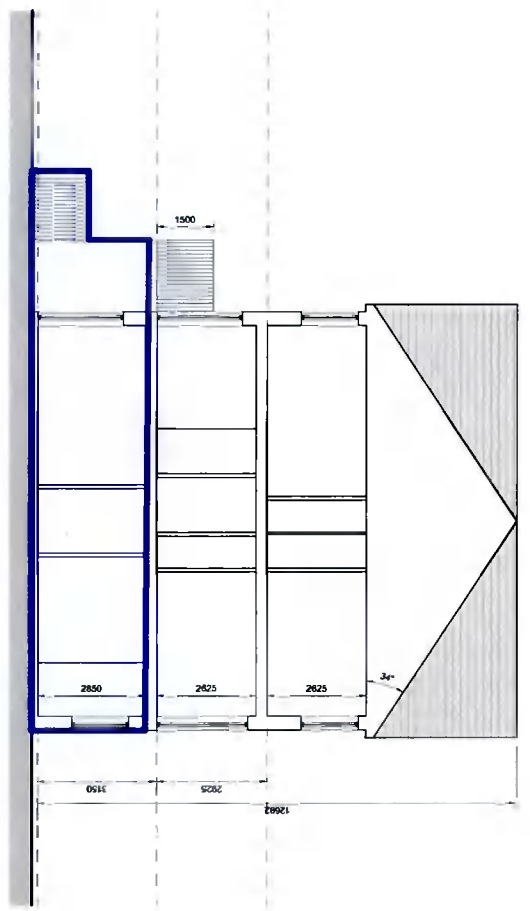
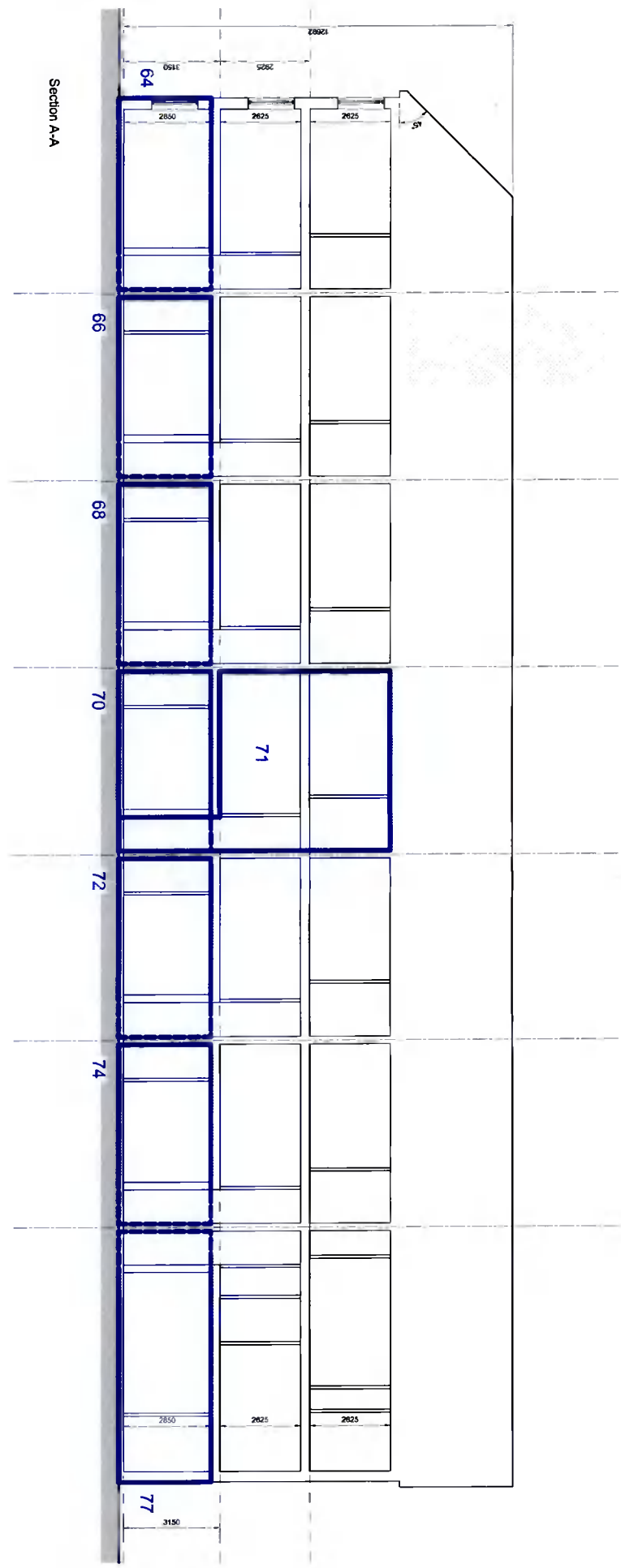
PHONE 66139901 FAX 6765715
E-MAIL info@ckk.ie

- © The drawing is copyright
 1. Do not make this drawing
 2. Form and content to be modified, copied or re-used
 3. All dimensions to be checked on site
 4. To be used with relevant Engineering drawings



revisions	date	no.
description		
DUPLEX BLOCK		
Part V Units		
ELEVATIONS		
drawing no.	2112-P-DP-200 Part V	
scale	1:200@A3	
job	Proposed Residential Development at Gordon Park	
client	Greenwalk Development Ltd.	
issue	PLANNING	
CONROY CROWE KELLY ARCHITECTS 65 MERRION SQUARE DUBLIN 2 PHONE 061399001 FAX 6765715 E-MAIL info@ckk.ie		

- 1. Do not scale this drawing.
- 2. Errors and omissions to be remedied by Architect.
- 3. All dimensions to be checked on site.
- 4. To be read with relevant Engineer drawings.



REVISIONS description date initials		drawing no. 2112-P-DP-300 Part V grid ref. 102112 - Gordon Park 2 - Greenwalk Development	
DESCRIPTION DUPLEX BLOCK Part V Units SECTION A-A & B-B		scale 1/1 1:200@A3	
job Proposed Residential Development at Gordon Park		date SEPT 21 drawn AC checked PMV	
client Greenwalk Development Ltd.		issue PLANNING	
CONROY CROWE KELLY ARCHITECTS 65 MERLION SQUARE DUBLIN 2 PHONE 66139901 FAX 6765715 E-MAIL info@ckk.ie			