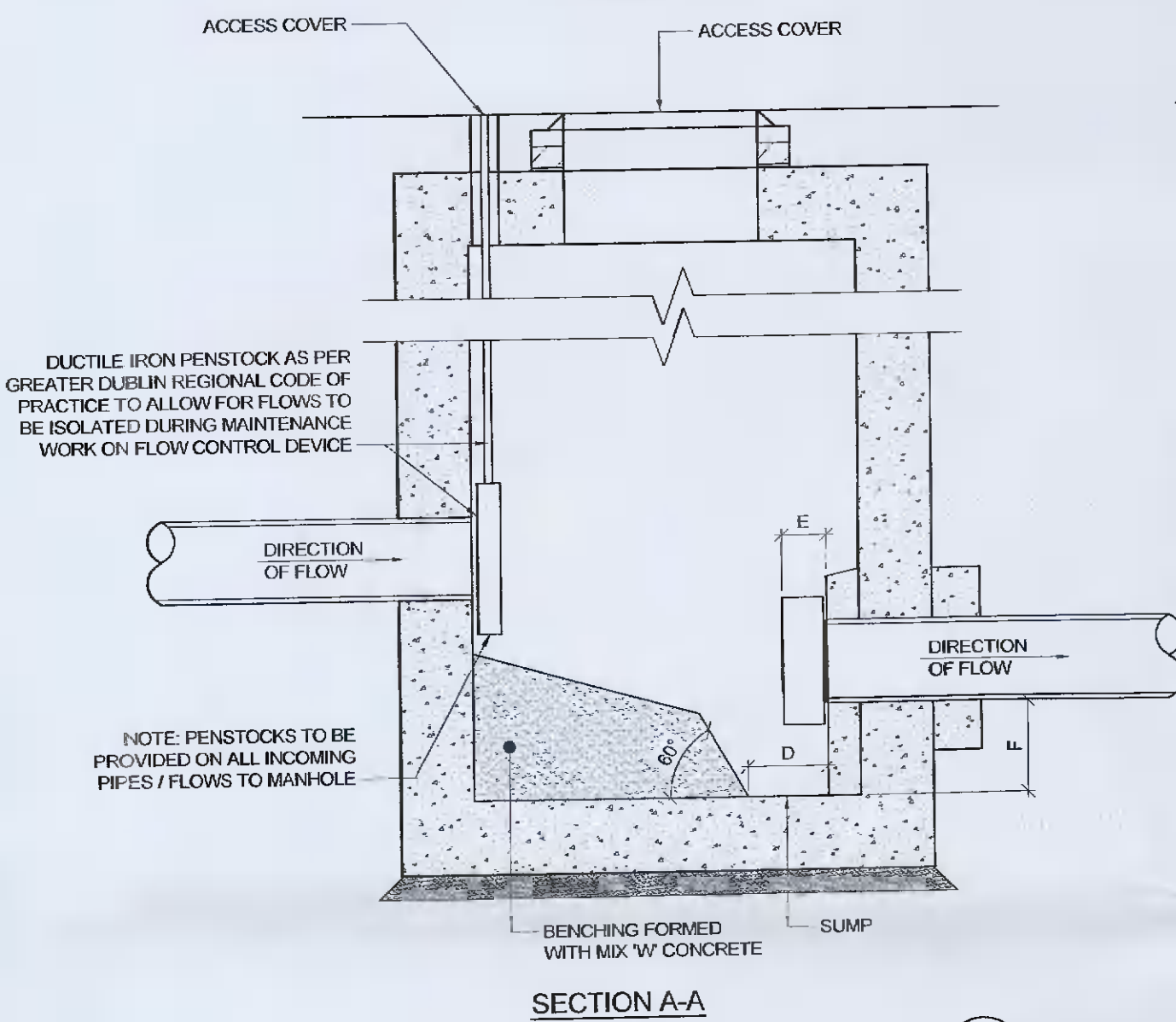
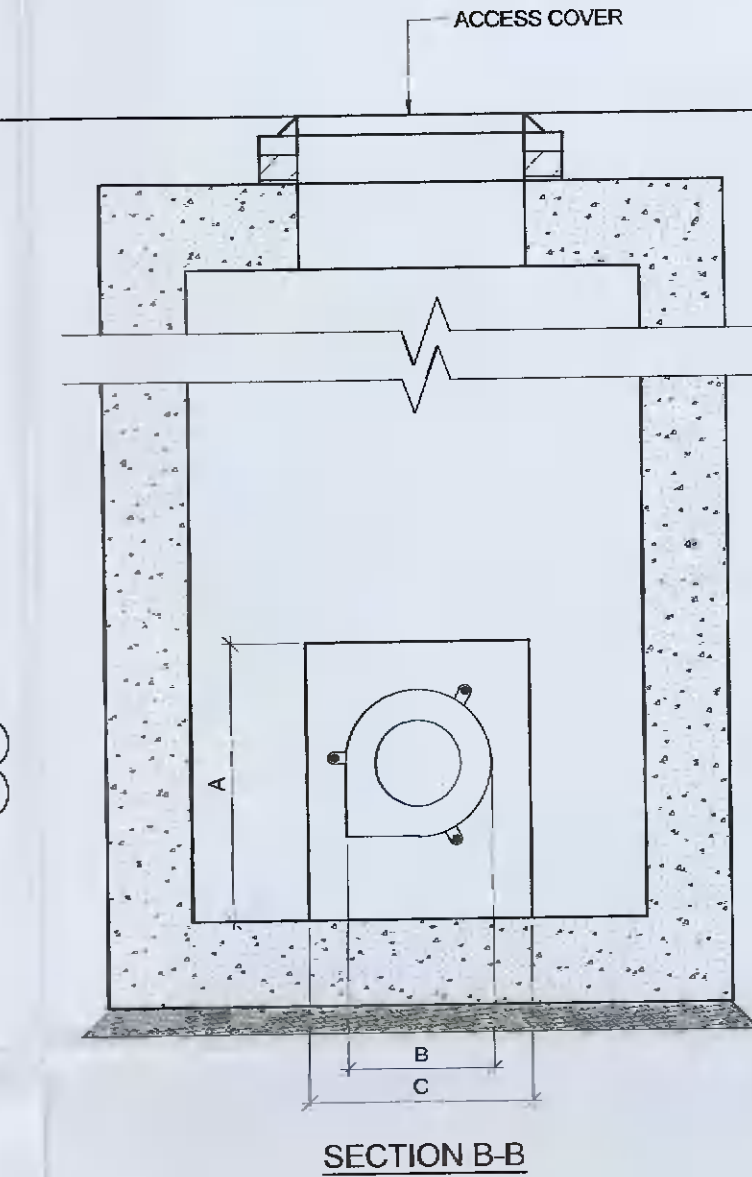


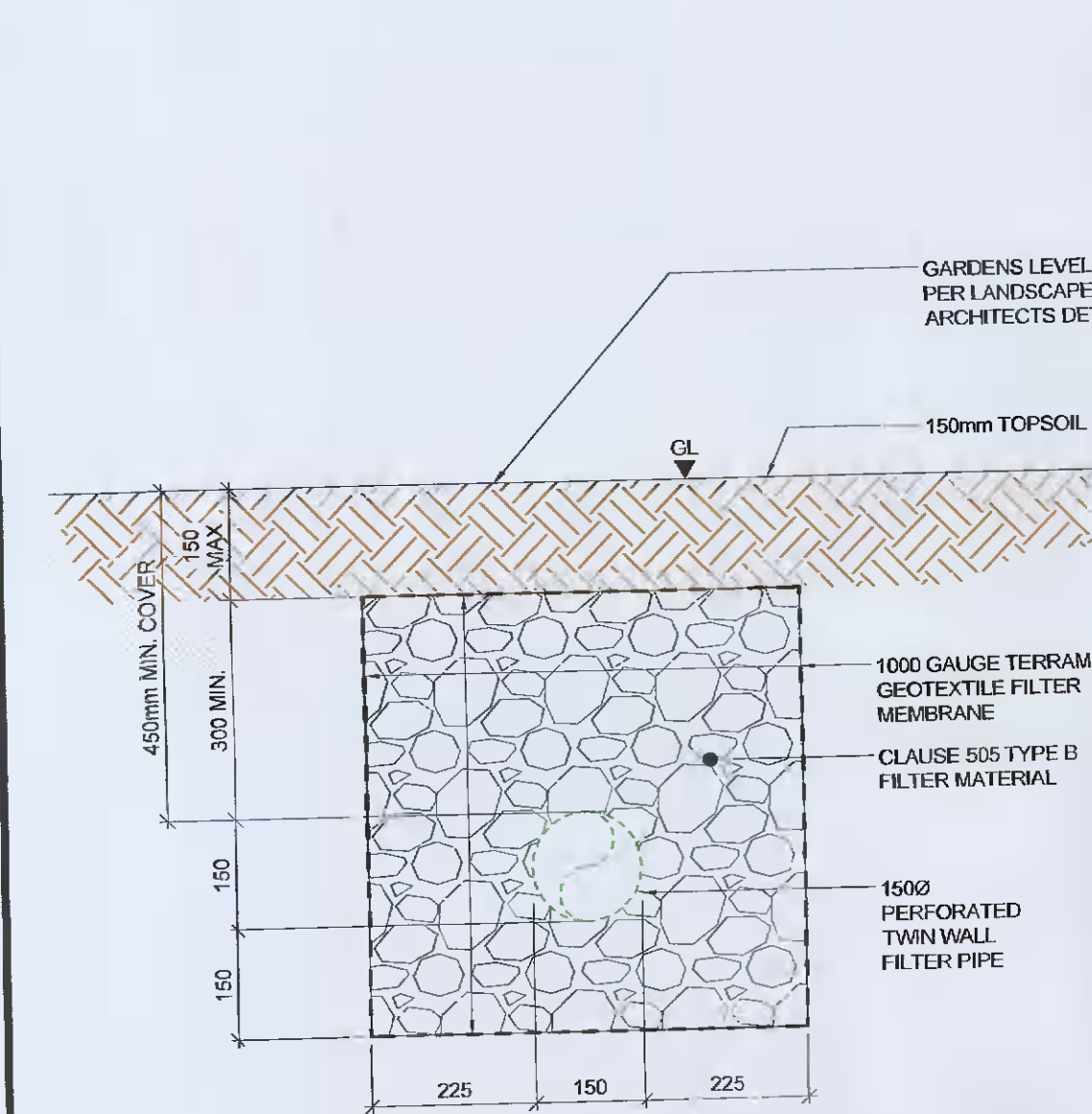
HYDROBRAKE LOCATION	DIMENSION					
	A	B	C	D	E	F
S2	800	605	810	210	105	380 MIN.
S60	775	580	785	210	105	370 MIN.



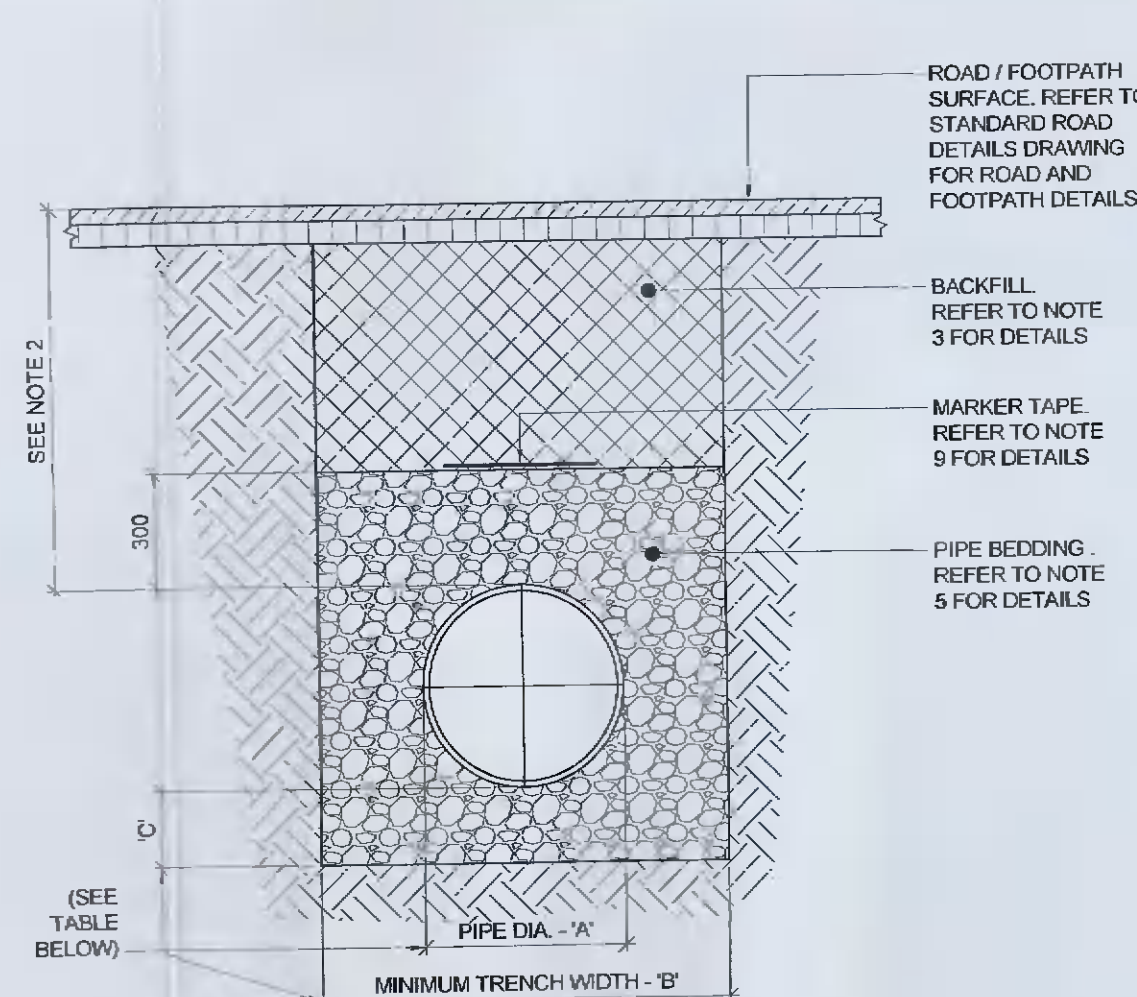
1 HYDROBRAKE DETAIL
SCALE: 1:20



SECTION B-B

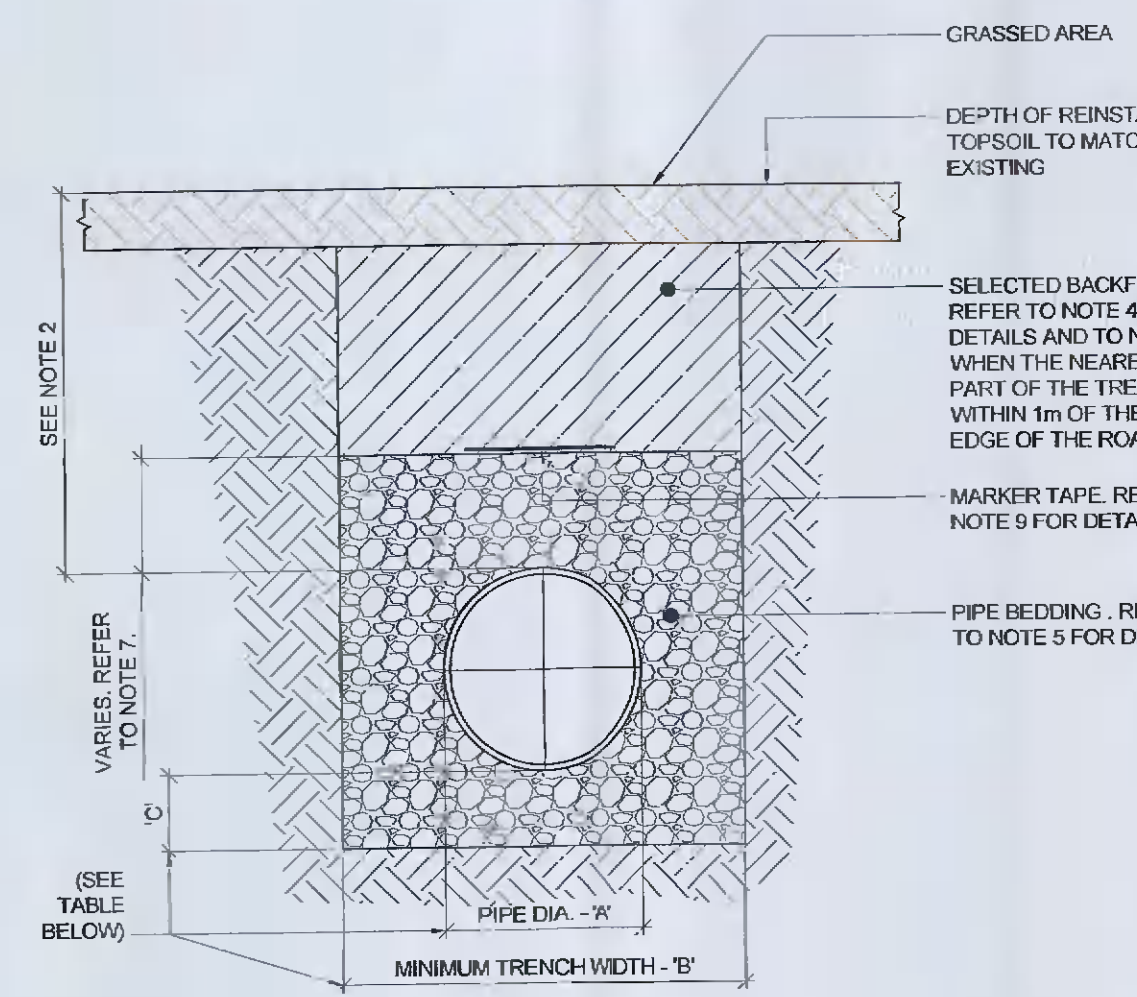


5 TYPICAL FRENCH DRAIN DETAIL
SCALE: 1:10



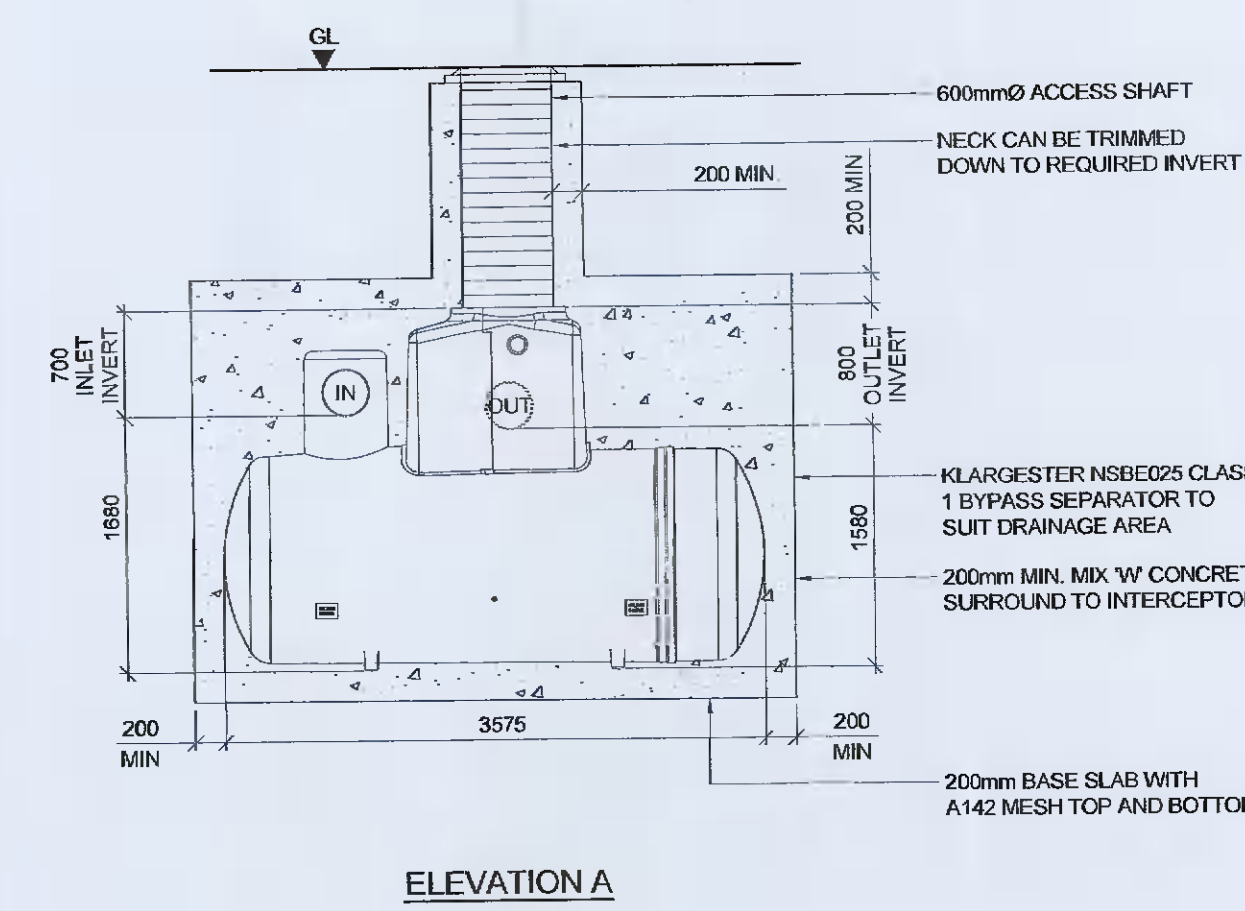
6 TRENCH BACKFILL AND BEDDING CROSS SECTION IN ROADS AND PAVED AREAS
SCALE: 1:20

PIPE DIAMETER 'A' (mm)	TRENCH WIDTH 'B' (mm)
100	500
150	600
200	600
250	750
300	750

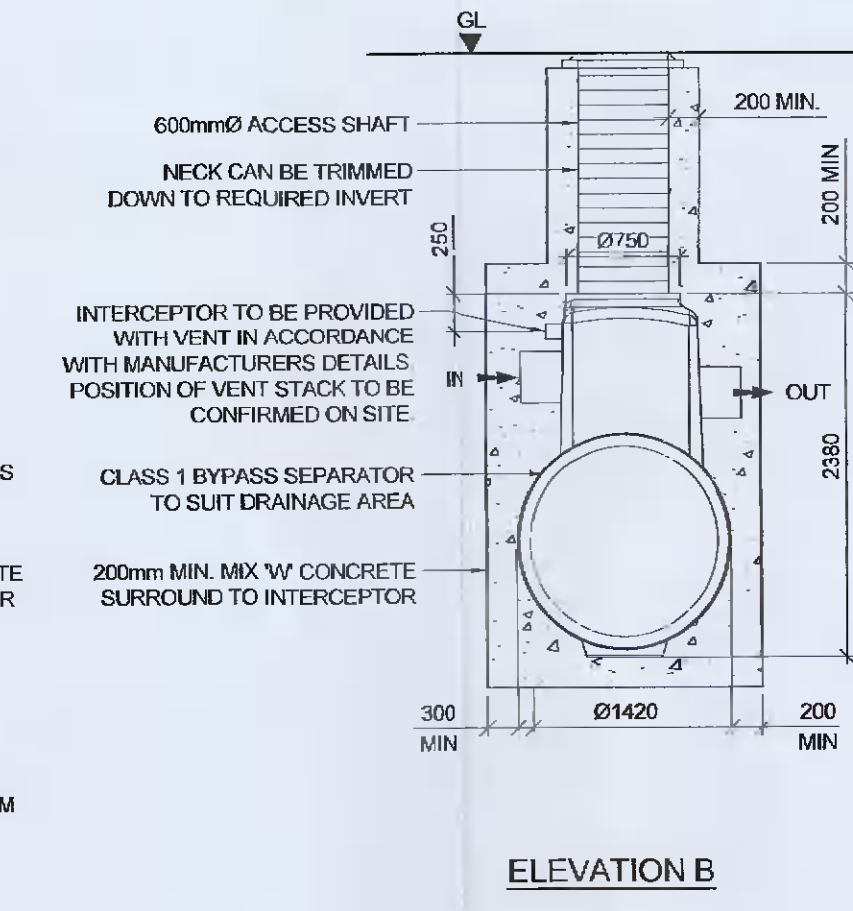


7 TRENCH BACKFILL AND BEDDING CROSS SECTION IN GRASSED AREAS
SCALE: 1:20

PIPE DIAMETER 'A' (mm)	DEPTH OF BEDDING 'C' (mm)
≤100	100
150 - 450	200



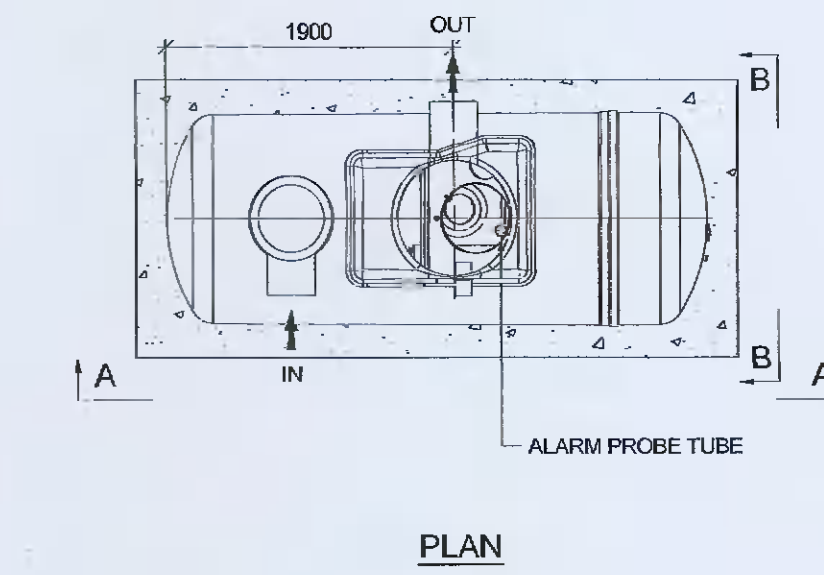
ELEVATION A



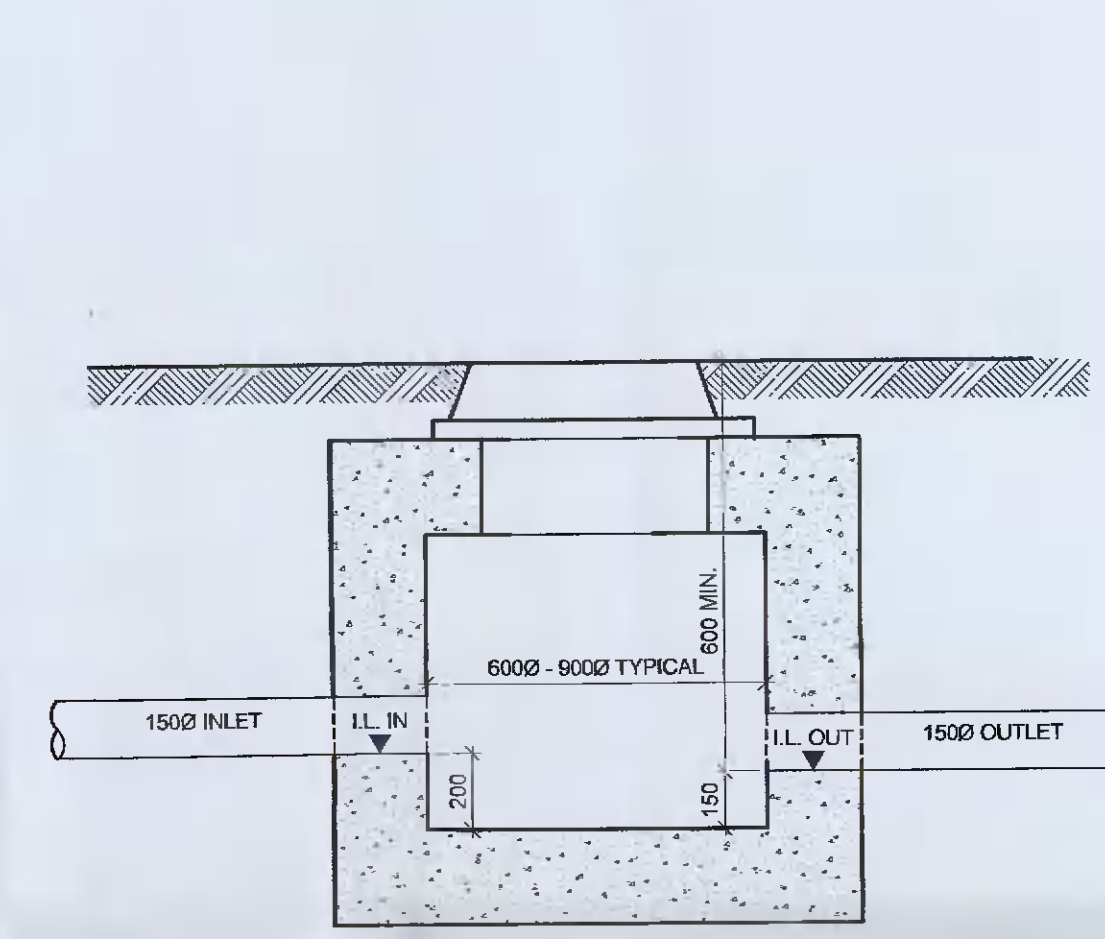
ELEVATION B

2 TYPICAL DETAILS OF PETROL INTERCEPTOR
SCALE: 1:50

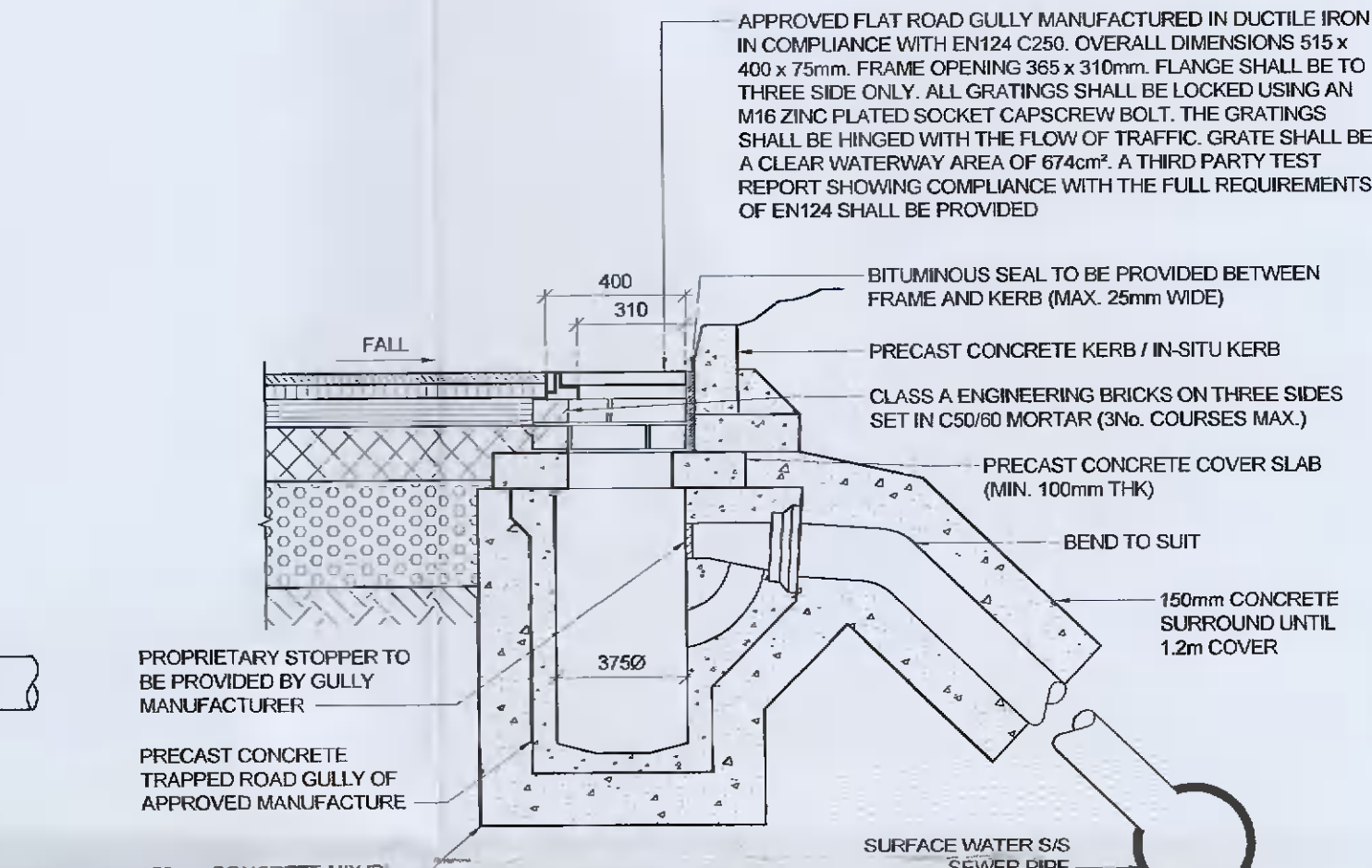
INTERCEPTOR TO BE MAINTAINED IN ACCORDANCE WITH MANUFACTURERS DETAILS
INLET AND OUTLET PIPES TO BE IN PLACE PRIOR TO CASTING OF INSITU CONCRETE SURROUND



PLAN



3 TYPICAL CATCHPIT CHAMBER DETAIL
SCALE: 1:20



4 TYPICAL PRECAST ROAD GULLY DETAIL
SCALE: 1:20

TRENCH BACKFILL AND BEDDING NOTES:

- ALL DIMENSIONS ARE IN MILLIMETRES (mm) UNLESS NOTED OTHERWISE.
- THE MINIMUM DEPTH OF COVER FROM THE FINISHED SURFACE TO THE CROWN OF GRAVITY PIPES WITHOUT PROTECTION SHOULD BE AS FOLLOWS:
 - GARDENS AND PATHWAYS WITHOUT ANY POSSIBILITY OF VEHICULAR ACCESS - DEPTH NOT LESS THAN 0.5m. (THIS WOULD NORMALLY RELATE TO DRAINS IN PRIVATE PROPERTY, SHALLOW PIPES OF THIS NATURE ARE UNDESIRABLE AND SHOULD BE INSTALLED IN ACCORDANCE WITH THE CURRENT BUILDING REGULATIONS).
 - DRIVEWAYS, PARKING AREAS AND YARDS WITH HEIGHT RESTRICTIONS TO PREVENT ENTRY BY VEHICLES WITH A GROSS VEHICLE WEIGHT IN EXCESS OF 7.5 TONNES - DEPTH NOT LESS THAN 0.75m.
 - DRIVEWAYS, PARKING AREAS AND NARROW STREETS WITHOUT FOOTWAYS (E.G. NEW DEVELOPMENTS) WITH LIMITED ACCESS FOR VEHICLES WITH A GROSS VEHICLE WEIGHT IN EXCESS OF 7.5 TONNES - DEPTH NOT LESS THAN 0.9m.
 - DEPTHS OF SEWERS IN GATED ESTATES SHALL BE SIMILAR TO THAT OUTLINED ABOVE.
 - AGRICULTURAL LAND AND PUBLIC OPEN SPACE - DEPTH NOT LESS THAN 0.9m.
 - OTHER HIGHWAYS AND PARKING AREAS WITH UNRESTRICTED ACCESS TO VEHICLES WITH A GROSS VEHICLE WEIGHT IN EXCESS OF 7.5 TONNES - DEPTH NOT LESS THAN 1.2m.
- CLAUSE 804 MATERIAL IN ACCORDANCE WITH THE NATIONAL ROADS AUTHORITY (TRAFFIC) SPECIFICATION FOR ROAD WORKS IS TO BE USED AS BACKFILL MATERIAL WHERE THE SEWER MAIN IS LOCATED IN ROADS, FOOTPATHS OR WHEN THE NEAREST PART OF THE TRENCH IS WITHIN 1m OF THE PAVED EDGE OF THE ROADWAY. CLAUSE 804 (1) TO BE COMPACTED AS PER CLAUSE 802 OF THE NATIONAL ROADS AUTHORITY (TRAFFIC) SPECIFICATION FOR ROAD WORKS. HARDWARE IN ACCORDANCE WITH CL 1.2.29 OF THE PROJECT SPECIFICATION IS TO BE USED WITHIN 500mm OF CEMENT BOUND MATERIALS, CONCRETE PAVEMENTS, CONCRETE STRUCTURES OR CONCRETE PRODUCTS, OTHERWISE CLAUSE 804 MAY BE USED.
- SELECTED EXCAVATED MATERIAL MAY BE USED IN GREEN-FIELD AREAS ABOVE GRANULAR PIPE SURROUND MATERIAL SUBJECT TO THE APPROVAL OF IRISH WATER.
- PIPE BEDDING SHALL COMPLY WITH WIS 4-08-02 AND IGN 4-08-01 GRANULAR MATERIAL SHALL BE 14mm TO 5mm GRADED AGGREGATE OR 10mm SINGLE SIZED AGGREGATE IS EN 12542. CONCRETE BED, ALGUNA & SURROUND, WHERE REQUIRED, SHALL BE TO STD-W/46E.
- IN SOFT GROUND CONDITIONS (CBR < 5) THE MATERIAL SHOULD BE EXCAVATED AND DISPOSED OF IN ACCORDANCE WITH THE WASTE MANAGEMENT ACT AND CLAUSE 804 / 808 MATERIAL IN ACCORDANCE WITH THE NATIONAL ROADS AUTHORITY. GRANULAR MATERIAL IN THE CASE OF RIGID PIPES. A GRANULAR SURROUND OF MINIMUM DEPTH OF 150mm ABOVE THE CROWN OF THE PIPE IS REQUIRED FOR FLEXIBLE PIPES. AND TYPE B MATERIAL IS TO BE USED AS BACKFILL ABOVE THIS. ALL RISING MAINS IN GREEN-FIELD AREAS SHALL HAVE A MINIMUM COVER OF 300mm OF GRANULAR MATERIAL ABOVE THE EXTERNAL CROWN OF THE PIPE.
- PIPES SHALL NOT BE SUPPORTED ON STONES, ROCKS OR ANY HARD OBJECTS ANY POINT ALONG THE TRENCH. ROCK SHALL BE EXCAVATED TO A DEPTH OF 150mm BELOW THE ACTUAL DEPTH OF THE TRENCH WITH THE TRENCH FILLED WITH CLAUSE 808 MATERIAL IN ACCORDANCE WITH THE NATIONAL ROADS AUTHORITY (TRAFFIC) SPECIFICATION FOR ROAD WORKS. THE GRANULAR MATERIAL SHALL BE LAID ABOVE THIS VOID BACKFILL MATERIAL.
- NON DEGRADABLE MARKER TAPE SHOULD BE INSTALLED AT TOP OF PIPE BEDDING LAYER. IN THE CASE OF NON METAL PIPE MATERIAL, THE MARKER TAPE SHOULD INCORPORATE A TRACE WIRE WHICH IS LIKED TO FITTINGS AND TERMINATED AT THE WASTE WATER PUMPING STATION AND THE DISCHARGE MAN-HOLE. REFER TO IRISH WATER'S WASTEWATER INFRASTRUCTURE CODE OF PRACTICE FOR FURTHER DETAILS.
- TRENCH WIDTHS FOR PIPE SIZES ≤ 80mm MAY BE < 500mm, SUBJECT TO CONSIDERATION BEING GIVEN TO THE TRENCH DEPTH, HEALTH & SAFETY & CONSTRUCTION ACCESS REQUIREMENTS.
- NEW ROAD CONSTRUCTION & SURFACE FINISH TO BE TO ROAD AUTHORITY REQUIREMENTS.
- EXISTING ROAD REINSTATEMENT TO COMPLY WITH CURRENT VERSION OF "GUIDELINES FOR MANAGING OPENINGS IN PUBLIC ROADS" BY THE DEPARTMENT OF TRANSPORT, TOURISM & SPORT, OR TRANSPORT INFRASTRUCTURE IRELAND REQUIREMENTS.

C01 AP ISSUED FOR PLANNING 18.11.2021

REV SUIT DESCRIPTION DATE

DRAWING STATUS: ISSUED FOR PLANNING

CHECKED BY: RON REVIEWED BY: JM APPROVED BY: JM

NO PART OF THIS DOCUMENT MAY BE REPRODUCED OR TRANSMITTED IN ANY FORM OR STORED IN ANY RETRIEVAL SYSTEM OR ANY NATURE WITHOUT THE WRITTEN PERMISSION OF THE CONSULTING ENGINEER OR COPYRIGHT HOLDER EXCEPT AS AGREED FOR USE ON THE PROJECT FOR WHICH THE DOCUMENT WAS ORIGINALLY ISSUED

TJ O'CONNOR & ASSOCIATES
CONSULTING ENGINEERS

CORRIG HOUSE, CORRIG ROAD, SANDYFORD, DUBLIN 18
Tel: 01-295 2321 Fax: 01-295 4541 Email: tjoc@tjoc.ie Web: www.tjoc.ie

PROJECT: PROPOSED RESIDENTIAL DEVELOPMENT AT GORDON PARK

CLIENT: GREENWALK DEVELOPMENT LTD.

DRAWING TITLE: SITE DRAINAGE DETAILS SHEET 1

SCALE: AS SHOWN (A1)

PROJECT OPERATOR VOLUME LOCATION TYPE REV. NUMBER

21003-TJOC-ZZ-ZZ-DR-C-0074 REV: C01