

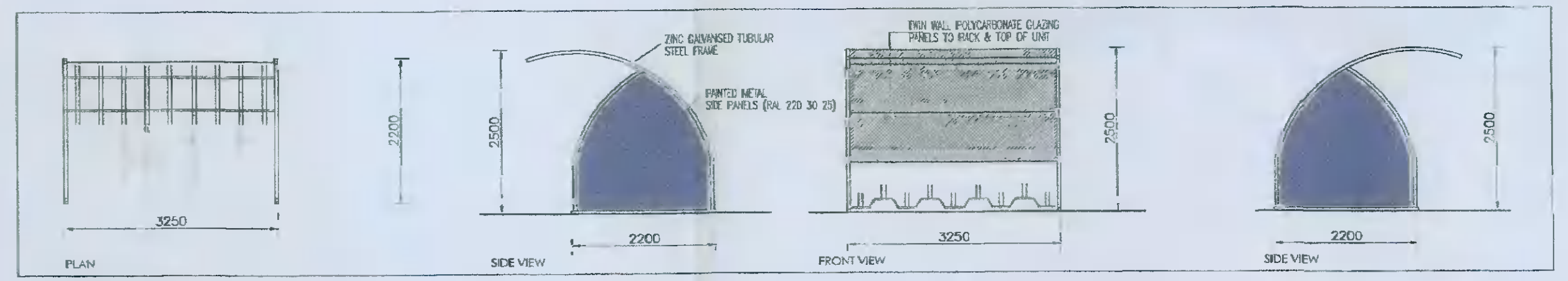
TABLE OF AREAS & CAR & BICYCLE PARKING

SITE B	LIGHT INDUSTRY	OFFICE	STAFF FACILITIES	TOTAL
UNIT B16-B23 GROUND FLOOR	2,764m ² 29,752 Sq.ft.	280m ² 3,121 Sq.ft.	70m ² 753 Sq.ft.	3,124m ² 33,627 Sq.ft.
UNIT B16-B23 FIRST FLOOR	-	291m ² 3,132 Sq.ft.	69m ² 743 Sq.ft.	360m ² 3,875 Sq.ft.
TOTAL	2,764m ² 29,752 Sq.ft.	561m ² 6,254 Sq.ft.	139m ² 1,496 Sq.ft.	3,264m ² 37,502 Sq.ft.

CARPARKING	1 per 100m ²	1 per 40m ²	-	-
REQUIRED	-	28 SPACES	15 SPACES	43 SPACES REQUIRED

3no. DISABLED CAR PARK SPACES TO BE PROVIDED

	WAREHOUSE	OFFICE		
BICYCLE PARKING	1 per 200m ² LONG TERM	1 per 200m ² LONG TERM	1 per 200m ² SHORT TERM	
REQUIRED	14 SPACES	3 SPACES	3 SPACES	20 SPACES REQUIRED
				21 SPACES PROVIDED



BICYCLE SHELTER DETAIL

PLANNING	REQUIREMENTS
PLANNING	REQUIRED FOR PLANNING IN BICYCLE PARKING AREA
PLANNING	REQUIRED FOR PLANNING

Job Title SITE B - BLOCK B4 AERODROME BUSINESS PARK RATHCOOLE CO. DUBLIN	Drawing Title SITE LAYOUT PLAN	Scale 1/500	Date 09/09/16	Drawing No. D1119-3	Revision 02	Sheet PL3
Client DE LA SALLE LIMITED	Drawing No. PLANNING	Drawing No. D1119-3	Drawing No. 02	Drawing No. PL3	Drawing No. PL3	Drawing No. PL3

KAVANAGH BURKE CONSULTING ENGINEERS	01 - 450 0664 01 - 458 4340 Email: kburke@kavanaghburke.ie Dublin 15	Unit G3, Calan Road, Calan, Pembrokeshire, SA70 8JY, Wales
---	---	--