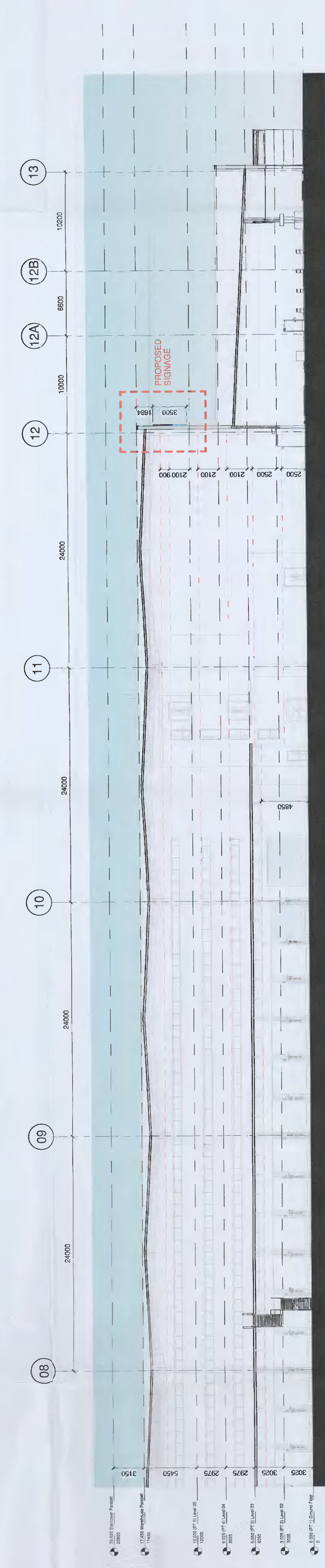


1 Partial Longitudinal Section 1:200



2 Partial Longitudinal Section 2:200

**PROPOSED**

**JSA Architects**  
 5 BLACKROCK, COO DUBLIN, TEL: (01) 2872951 FAX: (01) 2833147  
 E-MAIL: info@jbsa.ie WEB: www.jbsa.ie

Client: MEU Dublin 2 Limited  
 Project: BALDOWNE BUSINESS PARK - UNIT E  
 Description: PROPOSED WAREHOUSE SECTION  
 Date: 10.11.2021 Sheet: A0 Scale: 1:200 By: OC  
 Job No: 25201 Stage: PLANNING Date: 10/11/2021



Rev	Description	By	Check	Date
REV 01	Issue for Planning	JSA	JSA	10/11/2021
REV 02	Issue for Planning	JSA	JSA	10/11/2021
REV 03	Issue for Planning	JSA	JSA	10/11/2021
REV 04	Issue for Planning	JSA	JSA	10/11/2021
REV 05	Issue for Planning	JSA	JSA	10/11/2021
REV 06	Issue for Planning	JSA	JSA	10/11/2021
REV 07	Issue for Planning	JSA	JSA	10/11/2021
REV 08	Issue for Planning	JSA	JSA	10/11/2021
REV 09	Issue for Planning	JSA	JSA	10/11/2021
REV 10	Issue for Planning	JSA	JSA	10/11/2021
REV 11	Issue for Planning	JSA	JSA	10/11/2021
REV 12	Issue for Planning	JSA	JSA	10/11/2021
REV 13	Issue for Planning	JSA	JSA	10/11/2021
REV 14	Issue for Planning	JSA	JSA	10/11/2021
REV 15	Issue for Planning	JSA	JSA	10/11/2021
REV 16	Issue for Planning	JSA	JSA	10/11/2021
REV 17	Issue for Planning	JSA	JSA	10/11/2021
REV 18	Issue for Planning	JSA	JSA	10/11/2021
REV 19	Issue for Planning	JSA	JSA	10/11/2021
REV 20	Issue for Planning	JSA	JSA	10/11/2021