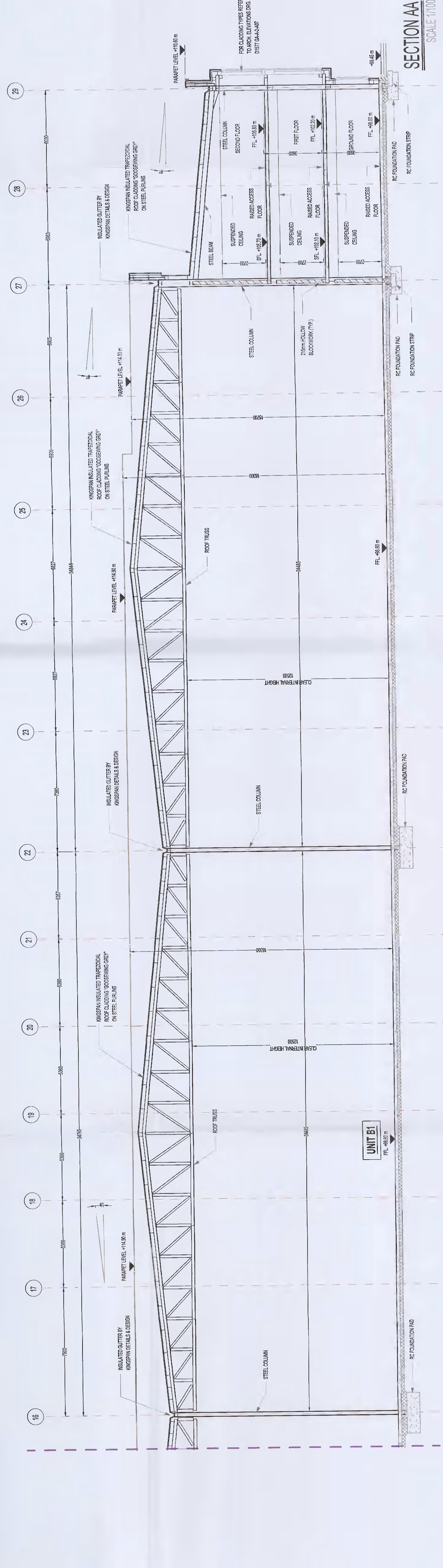
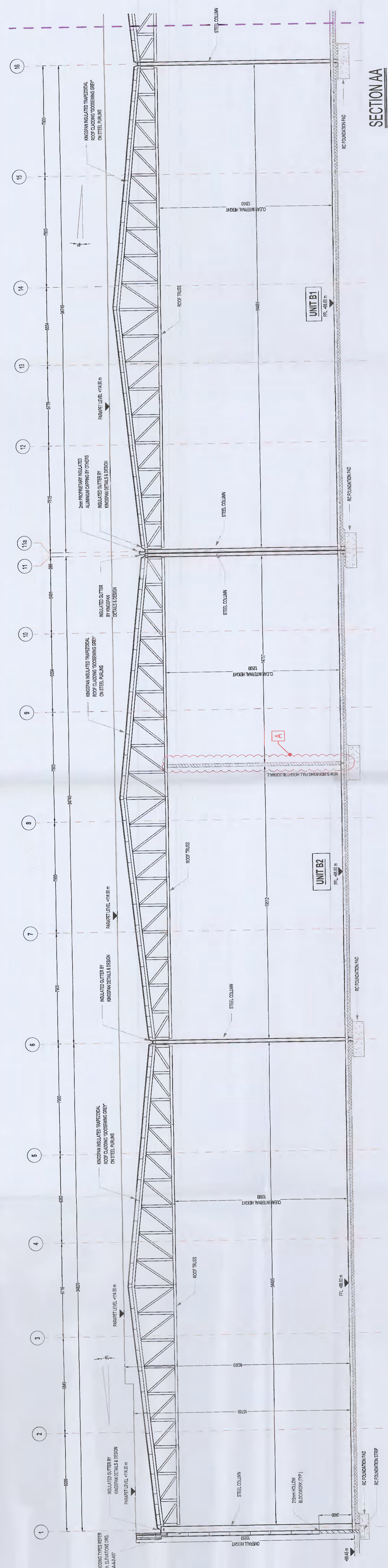


TABLE OF GROSS INTERNAL FLOOR AREAS & USES FOR THIS PLANNING ALTERNATION APPLICATION

BLOCK / SUBDIVISION	EXISTING SPACES	NEW SPACES	ADDITIONAL SPACES	ADDITIONAL FACILITIES	WAREHOUSE UNIT B1	WAREHOUSE UNIT B2	EXISTING SUBTOTAL	TOTAL PROPOSED
GROUND FLOOR	288 m <sup>2</sup>	180 m <sup>2</sup>	100 m <sup>2</sup>	200 m <sup>2</sup>	1200 m <sup>2</sup>	1200 m <sup>2</sup>	2268 m <sup>2</sup>	4968 m <sup>2</sup>
	288 m <sup>2</sup>	180 m <sup>2</sup>	100 m <sup>2</sup>	200 m <sup>2</sup>	1200 m <sup>2</sup>	1200 m <sup>2</sup>	2268 m <sup>2</sup>	4968 m <sup>2</sup>
FIRST FLOOR	288 m <sup>2</sup>	180 m <sup>2</sup>	100 m <sup>2</sup>	200 m <sup>2</sup>	1200 m <sup>2</sup>	1200 m <sup>2</sup>	2268 m <sup>2</sup>	4968 m <sup>2</sup>
	288 m <sup>2</sup>	180 m <sup>2</sup>	100 m <sup>2</sup>	200 m <sup>2</sup>	1200 m <sup>2</sup>	1200 m <sup>2</sup>	2268 m <sup>2</sup>	4968 m <sup>2</sup>
SECOND FLOOR	288 m <sup>2</sup>	180 m <sup>2</sup>	100 m <sup>2</sup>	200 m <sup>2</sup>	1200 m <sup>2</sup>	1200 m <sup>2</sup>	2268 m <sup>2</sup>	4968 m <sup>2</sup>
	288 m <sup>2</sup>	180 m <sup>2</sup>	100 m <sup>2</sup>	200 m <sup>2</sup>	1200 m <sup>2</sup>	1200 m <sup>2</sup>	2268 m <sup>2</sup>	4968 m <sup>2</sup>
TOTAL	1152 m <sup>2</sup>	720 m <sup>2</sup>	400 m <sup>2</sup>	800 m <sup>2</sup>	4800 m <sup>2</sup>	4800 m <sup>2</sup>	9936 m <sup>2</sup>	20736 m <sup>2</sup>

- ALTERATIONS DESCRIPTION:
- A) Addition of entry Block B, College Lane, Derrinstown, Co. Dub.
  - B) Addition of entry Block B, College Lane, Derrinstown, Co. Dub.
  - C) Addition of entry Block B, College Lane, Derrinstown, Co. Dub.
  - D) Addition of entry Block B, College Lane, Derrinstown, Co. Dub.
  - E) Addition of entry Block B, College Lane, Derrinstown, Co. Dub.
  - F) Addition of entry Block B, College Lane, Derrinstown, Co. Dub.
  - G) Addition of entry Block B, College Lane, Derrinstown, Co. Dub.
  - H) Addition of entry Block B, College Lane, Derrinstown, Co. Dub.
  - I) Addition of entry Block B, College Lane, Derrinstown, Co. Dub.
  - J) Addition of entry Block B, College Lane, Derrinstown, Co. Dub.
  - K) Addition of entry Block B, College Lane, Derrinstown, Co. Dub.
  - L) Addition of entry Block B, College Lane, Derrinstown, Co. Dub.
  - M) Addition of entry Block B, College Lane, Derrinstown, Co. Dub.
  - N) Addition of entry Block B, College Lane, Derrinstown, Co. Dub.
  - O) Addition of entry Block B, College Lane, Derrinstown, Co. Dub.
  - P) Addition of entry Block B, College Lane, Derrinstown, Co. Dub.
  - Q) Addition of entry Block B, College Lane, Derrinstown, Co. Dub.
  - R) Addition of entry Block B, College Lane, Derrinstown, Co. Dub.
  - S) Addition of entry Block B, College Lane, Derrinstown, Co. Dub.
  - T) Addition of entry Block B, College Lane, Derrinstown, Co. Dub.
  - U) Addition of entry Block B, College Lane, Derrinstown, Co. Dub.
  - V) Addition of entry Block B, College Lane, Derrinstown, Co. Dub.
  - W) Addition of entry Block B, College Lane, Derrinstown, Co. Dub.
  - X) Addition of entry Block B, College Lane, Derrinstown, Co. Dub.
  - Y) Addition of entry Block B, College Lane, Derrinstown, Co. Dub.
  - Z) Addition of entry Block B, College Lane, Derrinstown, Co. Dub.
- NOTE: The planning application is one of the supporting applications for submission to the Local Authority.



PLANNING ALTERATIONS TO BLOCK B  
DEVELOPMENT LANDS AT  
COLLEGE LANE GREENOGE,  
RATHCOOLE,  
Co. DUBLIN  
BLOCK B SUBDIVISION  
SECTION AA  
AERODROME PROPOUL LIMITED  
KAVANAGH BURKE  
CONSULTING ENGINEERS  
Unit 19, Camp Park,  
Ennis, Co. Kerry, Ireland  
Tel: 051 461554  
Fax: 051 461555  
Email: kb@kavanaghburke.ie

Scale: 1:100  
Date: 14/05/2023  
Sheet: 1 of 1  
Project: KA-24-06  
Revision: 1/1  
Author: DIB77  
Checker: GAA-24-06  
PL8