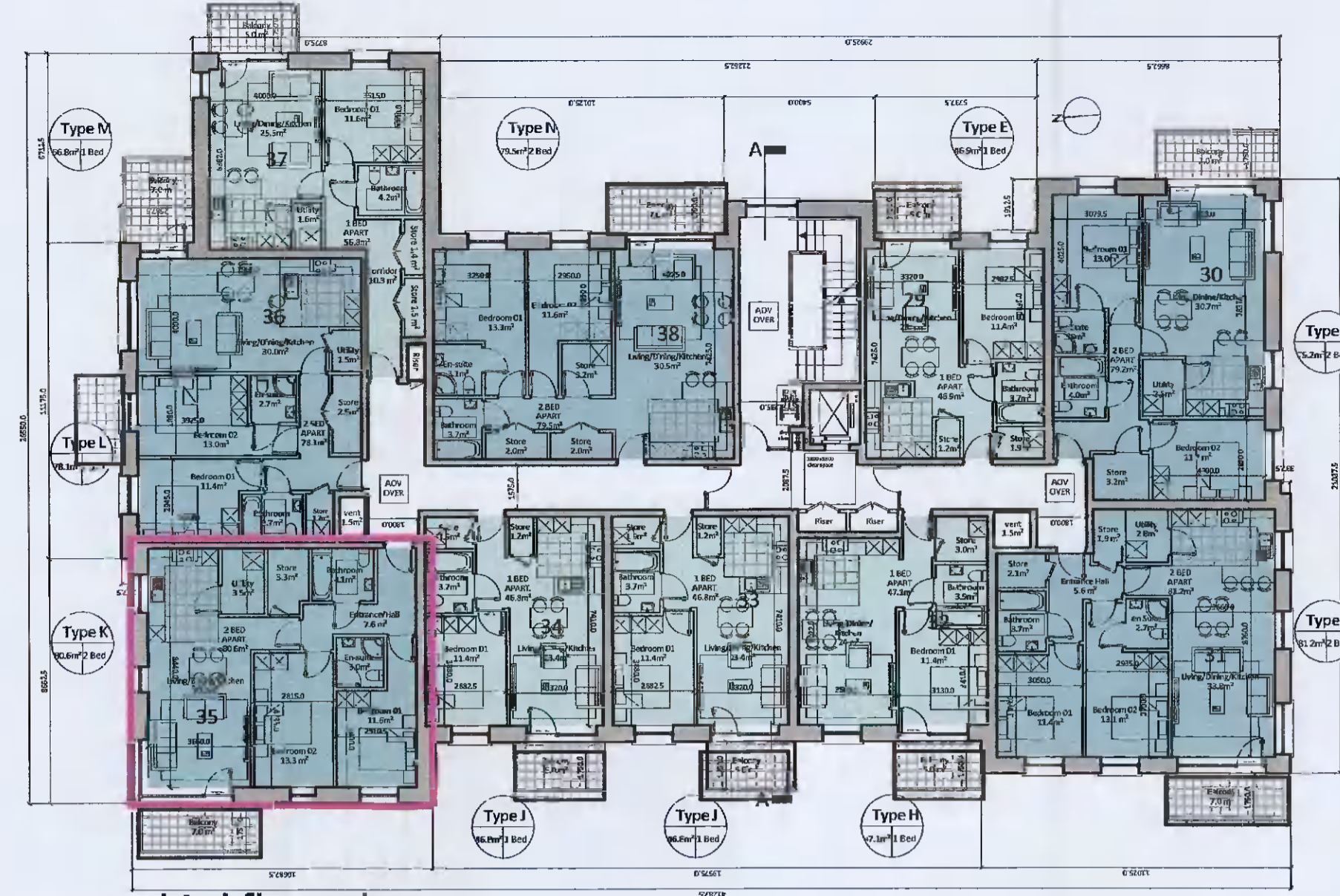
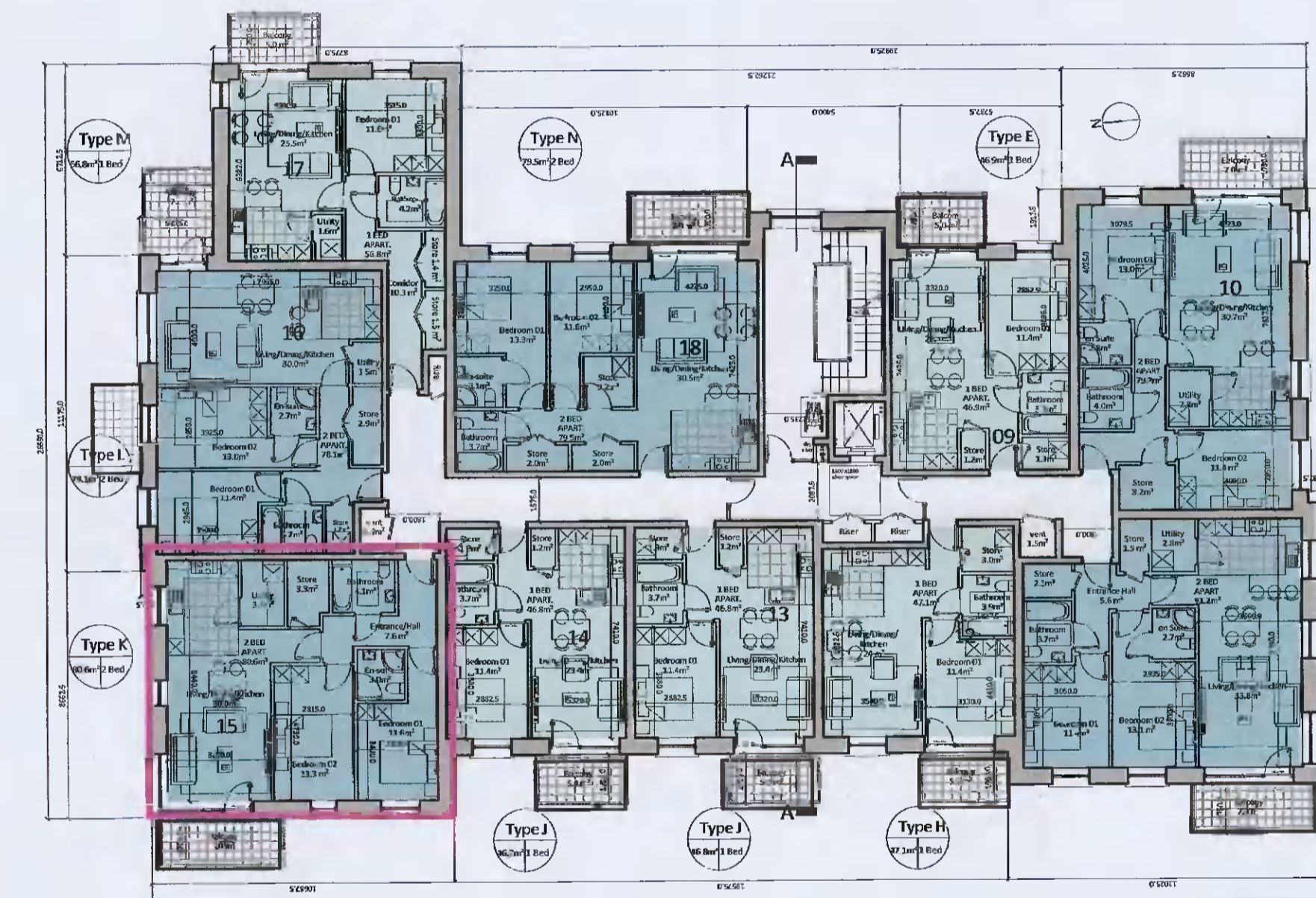


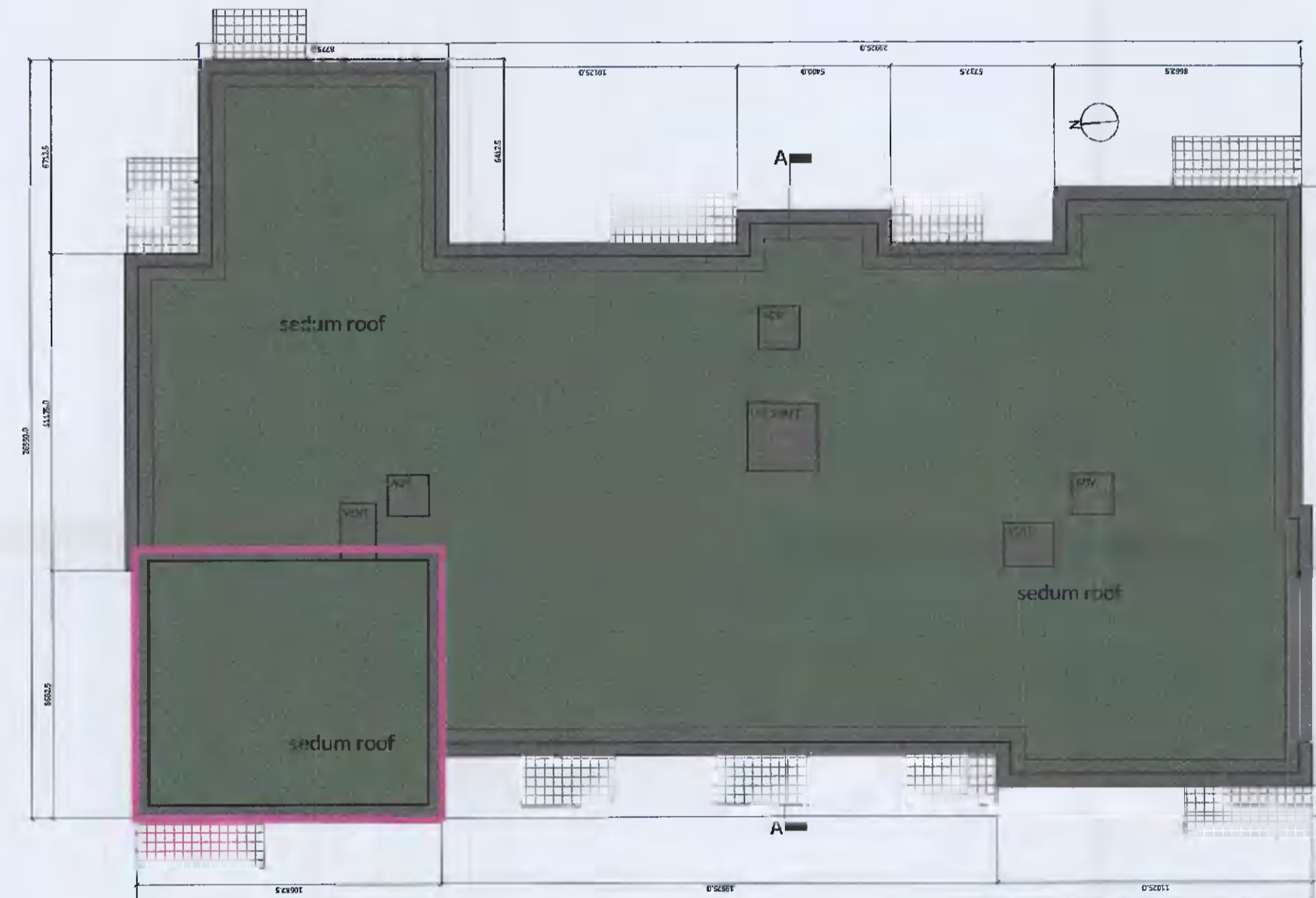
ground floor plan



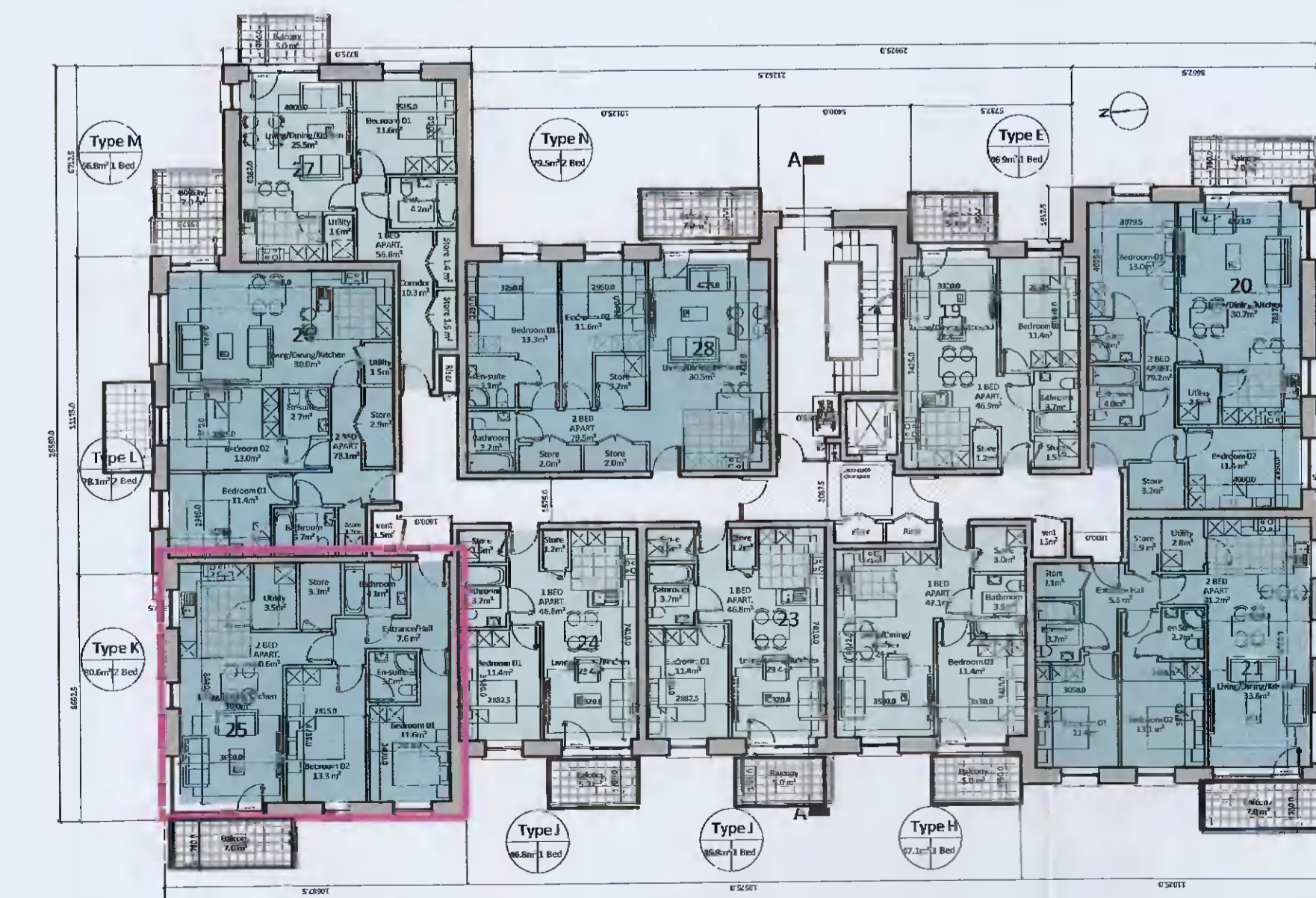
third floor plan



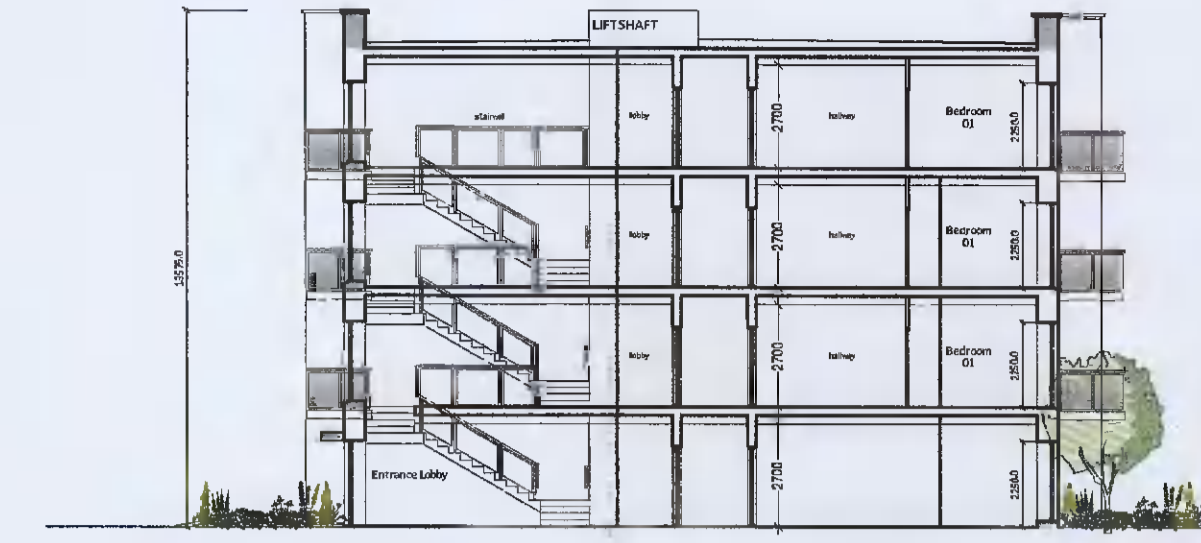
first floor plan



roof plan



second floor plan



Section A-A



FAÇADE TREATMENT OF BLOCK 1: OPTION A 'LIVORNO' BRICK



FAÇADE TREATMENT OF BLOCK 1: OPTION B 'LITHIUM' BRICK



South Elevation



East Elevation



North Elevation MATERIAL CHANGE TO EXTERNAL CLADDING OF NORTH WEST CORNER



West Elevation MATERIAL CHANGE TO EXTERNAL CLADDING OF NORTH WEST CORNER

- © This drawing is copyright
 1 Do not scale this drawing.
 2 Errors and omissions to be immediately notified to Architect.
 3 All dimensions to be checked on site.
 4 To be read with relevant Engineers drawings.

Finishes:

- MATERIALS:**
 WALLS: SELECTED BRICK/ SELF COLOURED ALUMINUM CLADDING.
 RENDER: RECON STONE/ CONCRETE SILLS & COURSE. STONE CLADDING TO MAIN ENTRANCE.
 STRING: SEDUM ROOF
 ROOF: SEDUM ROOF
 RAINWATER GOODS: U-PVC GUTTER & DOWNPIPES
 BALCONY: PAINTED MILD STEEL BALLUSTRADE
 WINDOWS: SELECTED DOUBLE GLAZED WINDOWS

AREA OF PROPOSED CHANGE

revisions	date	ins
description	2012 PA3 APT 05	drawing no.
Apartment Block 1: Proposed Amendments to Northwest Corner. Plans, Section, Elevations		
(Modified by CCK Architects)		
job	scale	
External Amendment to Apartment Block 1 Aderrig, Adamstown	1:200 A1	
client	date	
Quintain Developments Ireland Ltd.	OCT 2021	
issue	drawn	
PLANNING	DG/LD	
	checked	
	PG	

CONROY CROWE KELLY
 ARCHITECTS & URBAN DESIGNERS

65 MERRION SQUARE
 DUBLIN 2

phone 01 6613990 fax 01 6765115
 email info@cck.ie