

Bottle Store for Diageo 20200906

This dialux Plot No. 5 includes five Sections:

1. Bottle Store interior revised 20211003,
2. Bottle Store exterior revised 20211003,
3. Chem IBC Store interior - not updated,
4. Chem IBC Store exterior - not updated.
5. A vertical Calculation Plane along the Perimeter to the canal - not updateded..

Partner for Contact:
Order No.:
Company:
Customer No.:

Date: 06.10.2021
Operator: Paul Brennan

Light Design

27 Canal Walk,
Parkwest Ind. Est., Dublin D12 D12W2.

Operator Paul Brennan
Telephone +353 (0)87 9074686
Fax
e-Mail paul@lightdesign.ie

Table of contents

Bottle Store for Diageo 20200906	
Project Cover	1
Table of contents	2
Luminaire parts list	4
PHILIPS BY481P PSD WB LED250S/840 NO	
Luminaire Data Sheet	5
LEDVANCE GmbH 4058075353688 FL PFM 100W/4000K ASYM 45x140 BK	
Luminaire Data Sheet	6
Chem IBC Store	
Summary	7
Luminaire parts list	8
Calculation surfaces (coordinates list)	9
Photometric Results	10
Calculation surfaces (results overview)	11
Room Surfaces	
Workplane	
Isolines (E)	12
Value Chart (E)	13
Chem IBC Store nett Floor Area Lux	
Isolines (E, Perpendicular)	14
Value Chart (E, Perpendicular)	15
Enlarged Flavour Store	
Summary	16
Luminaire parts list	17
Photometric Results	18
Calculation surfaces (results overview)	19
Room Surfaces	
Chem IBC Store nett Floor Area Lux	
Isolines (E, Perpendicular)	20
Value Chart (E, Perpendicular)	21
Bottle Store Revised 20211003	
Summary	22
Luminaire parts list	23
Calculation surfaces (coordinates list)	24
Calculation surfaces (results overview)	25
False Color Rendering	26
Room Surfaces	
Calculation Surface 1	
Isolines (E, Perpendicular)	27
Bottle Store Revised External Lighting 20211003	
Planning data	28
Luminaire parts list	29
Calculation surfaces (results overview)	30
False Color Rendering	31
Exterior Surfaces	
Ground Element 1	
Calculating Grid at Canal	
Isolines (E)	32
Value Chart (E)	33
Calculation Surface 1	
Isolines (E, Perpendicular)	34
Object surfaces	
Bottle Store	
Bottle Store South External Wall	

Light Design

27 Canal Walk,
Parkwest Ind. Est., Dublin D12 D12W2.

Operator Paul Brennan
Telephone +353 (0)87 9074686
Fax
e-Mail paul@lightdesign.ie

Table of contents

Isolines (E)	35
Bottle Store West External Wall	
Isolines (E)	36
Bottle Store North External Wall	
Isolines (E)	37
Bottle Store East External Wall	
Isolines (E)	38
Chem IBC Store External Lighting	
Planning data	39
Luminaire parts list	40
Exterior Surfaces	
Ground Element 1	
Surface 1	
Isolines (E)	41
Value Chart (E)	42

Light Design

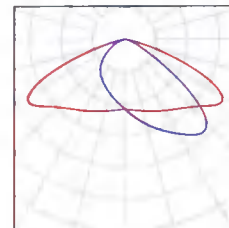
27 Canal Walk,
Parkwest Ind. Est., Dublin D12 D12W2

Operator Paul Brennan
Telephone +353 (0)87 9074686
Fax
e-Mail paul@lightdesign.ie

Bottle Store for Diageo 20200906 / Luminaire parts list

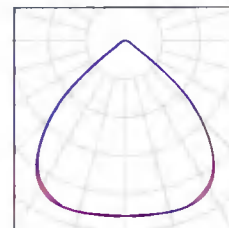
20 Pieces LEDVANCE GmbH 4058075353688 FL PFM
100W/4000K ASYM 45x140 BK
Article No.: 4058075353688
Luminous flux (Luminaire): 12801 lm
Luminous flux (Lamps): 12800 lm
Luminaire Wattage: 100.0 W
Luminaire classification according to CIE: 100
CIE flux code: 39 80 98 100 100
Fitting: 1 x LED (Correction Factor 1.000).

See our luminaire
catalog for an image of
the luminaire.



50 Pieces PHILIPS BY481P PSD WB LED250S/840 NO
Article No.:
Luminous flux (Luminaire): 24989 lm
Luminous flux (Lamps): 25000 lm
Luminaire Wattage: 160.0 W
Luminaire classification according to CIE: 100
CIE flux code: 69 98 100 100 100
Fitting: 1 x LED250S/840 (Correction Factor 1.000).

See our luminaire
catalog for an image of
the luminaire.



Light Design

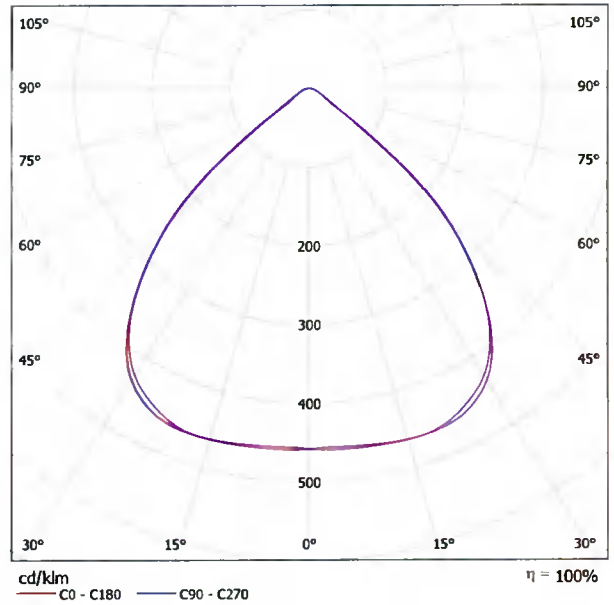
27 Canal Walk,
Parkwest Ind. Est., Dublin D12 D12W2.

Operator Paul Brennan
Telephone +353 (0)87 9074686
Fax
e-Mail paul@lightdesign.ie

PHILIPS BY481P PSD WB LED250S/840 NO / Luminaire Data Sheet

See our luminaire catalog for an image of the luminaire.

Luminous emittance 1:



Luminaire classification according to CIE: 100
CIE flux code: 69 98 100 100 100

Luminous emittance 1:

Glare Evaluation According to UGR													
ρ Ceiling	70	70	50	50	30	70	70	50	50	30			
ρ Walls	50	30	50	30	30	50	30	50	30	30			
ρ Floor	20	20	20	20	20	20	20	20	20	20			
Room Size		Viewing direction at right angles to lamp axis					Viewing direction parallel to lamp axis						
X	Y	2H	3H	4H	6H	8H	12H	2H	3H	4H	6H	8H	12H
2H	2H	14.0	15.0	14.2	15.2	15.4	14.4	15.4	14.7	15.6	15.8	16.0	16.3
	3H	14.6	15.5	14.9	15.7	16.0	14.9	15.8	15.2	16.0	16.2	16.4	16.5
	4H	14.8	15.7	15.2	15.9	16.2	15.1	15.9	15.4	16.2	16.4	16.5	16.6
	6H	15.0	15.8	15.4	16.1	16.4	15.1	15.9	15.5	16.2	16.4	16.5	16.6
	8H	15.0	15.8	15.4	16.1	16.4	15.1	15.8	15.5	16.1	16.3	16.4	16.5
	12H	15.0	15.7	15.4	16.0	16.4	15.1	15.8	15.5	16.1	16.3	16.4	16.5
4H	2H	14.2	15.0	14.5	15.3	15.5	14.6	15.4	14.9	15.7	15.9	16.1	16.3
	3H	14.9	15.6	15.3	15.9	16.3	15.2	15.9	15.6	16.2	16.4	16.5	16.6
	4H	15.3	15.9	15.6	16.2	16.6	15.4	16.0	15.8	16.4	16.6	16.7	16.8
	6H	15.5	16.0	15.9	16.4	16.8	15.6	16.1	16.0	16.4	16.6	16.7	16.8
	8H	15.5	16.0	16.0	16.4	16.8	15.6	16.0	16.0	16.4	16.6	16.7	16.8
	12H	15.5	16.0	16.0	16.4	16.8	15.6	16.0	16.0	16.4	16.6	16.7	16.8
8H	4H	15.3	15.8	15.7	16.2	16.6	15.5	16.0	15.9	16.3	16.4	16.5	16.6
	6H	15.6	16.0	16.0	16.4	16.8	15.6	16.0	16.1	16.4	16.5	16.6	16.7
	8H	15.6	16.0	16.1	16.4	16.9	15.7	16.0	16.1	16.4	16.5	16.6	16.7
	12H	15.7	15.9	16.1	16.4	16.9	15.7	15.9	16.1	16.4	16.5	16.6	16.7
12H	4H	15.3	15.7	15.7	16.1	16.5	15.5	15.9	15.9	16.3	16.4	16.5	16.6
	6H	15.6	15.9	16.0	16.3	16.8	15.6	16.0	16.1	16.4	16.5	16.6	16.7
	8H	15.6	15.9	16.1	16.4	16.9	15.7	15.9	16.1	16.4	16.5	16.6	16.7

Variation of the observer position for the luminaire distances S		
S = 1.0H	+2.1 / -6.1	+2.0 / -5.7
S = 1.5H	+3.5 / -9.1	+3.4 / -9.2
S = 2.0H	+4.8 / -9.6	+4.7 / -10.1

Standard table	BK00	BK00
Correction		
Summand	-5.9	-5.8

Corrected Glare Indices referring to 25000lm Total Luminous Flux



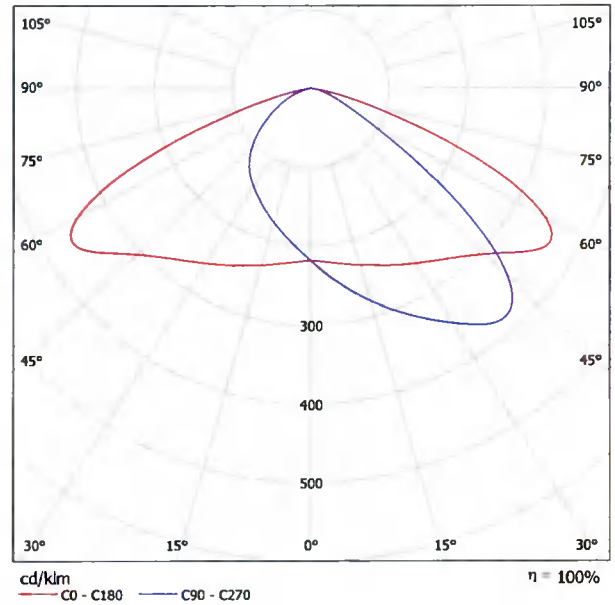
Light Design
27 Canal Walk,
Parkwest Ind. Est., Dublin D12 D12W2.

Operator Paul Brennan
Telephone +353 (0)87 9074686
Fax
e-Mail paul@lightdesign.ie

LEDVANCE GmbH 4058075353688 FL PFM 100W/4000K ASYM 45x140 BK / Luminaire Data Sheet

See our luminaire catalog for an image of the luminaire.

Luminous emittance 1:



Luminaire classification according to CIE: 100
CIE flux code: 39 80 98 100 100

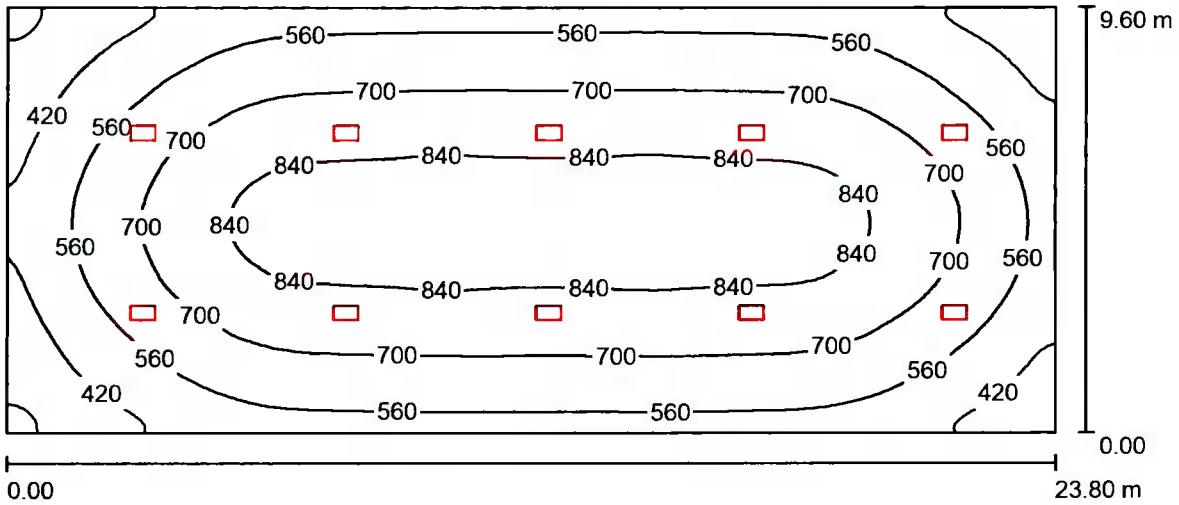
Due to missing symmetry properties, no UGR table can be displayed for this luminaire.

Light Design

27 Canal Walk,
Parkwest Ind. Est., Dublin D12 D12W2

Operator Paul Brennan
Telephone +353 (0)87 9074686
Fax
e-Mail paul@lightdesign.ie

Chem IBC Store / Summary



Height of Room: 6.000 m, Mounting Height: 5.800 m, Maintenance factor: 0.80

Values in Lux, Scale 1:171

Surface	ρ [%]	E_{av} [lx]	E_{min} [lx]	E_{max} [lx]	u_0
Workplane	/	662	246	907	0.371
Floor	15	662	248	905	0.374
Ceiling	30	77	38	97	0.494
Walls (4)	30	210	35	478	/

Workplane:

Height: 0.000 m
Grid: 128 x 128 Points
Boundary Zone: 0.000 m

Illuminance Quotient (according to LG7): Walls / Working Plane: 0.316, Ceiling / Working Plane: 0.117.

Luminaire Parts List

No.	Pieces	Designation (Correction Factor)	Φ (Luminaire) [lm]	Φ (Lamps) [lm]	P [W]
1	10	PHILIPS BY481P PSD WB LED250S/840 NO (1.000)	24989	25000	160.0
Total:			249888	250000	1600.0

Specific connected load: $7.00 \text{ W/m}^2 = 1.06 \text{ W/m}^2/100 \text{ lx}$ (Ground area: 228.48 m^2)

Light Design

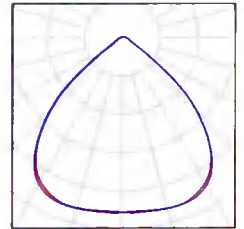
27 Canal Walk,
Parkwest Ind. Est., Dublin D12 D12W2.

Operator Paul Brennan
Telephone +353 (0)87 9074686
Fax
e-Mail paul@lightdesign.ie

Chem IBC Store / Luminaire parts list

10 Pieces PHILIPS BY481P PSD WB LED250S/840 NO
Article No.:
Luminous flux (Luminaire): 24989 lm
Luminous flux (Lamps): 25000 lm
Luminaire Wattage: 160.0 W
Luminaire classification according to CIE: 100
CIE flux code: 69 98 100 100 100
Fitting: 1 x LED250S/840 (Correction Factor
1.000).

See our luminaire
catalog for an image of
the luminaire.

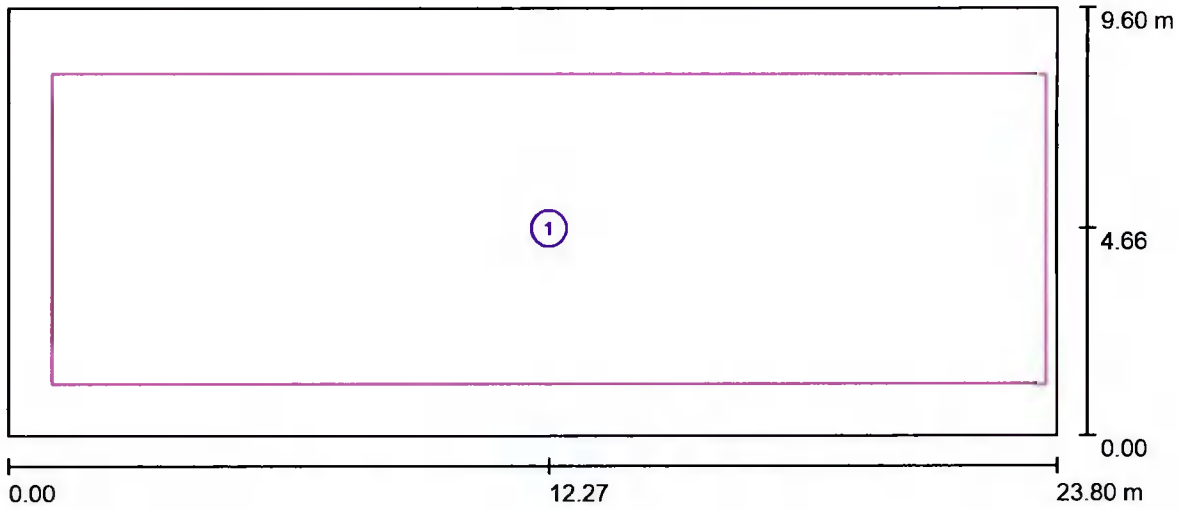


Light Design

27 Canal Walk,
Parkwest Ind. Est., Dublin D12 D12W2.

Operator Paul Brennan
Telephone +353 (0)87 9074686
Fax
e-Mail paul@lightdesign.ie

Chem IBC Store / Calculation surfaces (coordinates list)



Scale 1 : 171

Calculation Surface List

No.	Designation	Position [m]			Size [m]		Rotation [°]		
		X	Y	Z	L	W	X	Y	Z
1	Chem IBC Store nett Floor Area Lux	12.269	4.656	0.010	22.547	6.953	0.000	0.000	0.000

Light Design

27 Canal Walk,
Parkwest Ind. Est., Dublin D12 D12W2.

Operator Paul Brennan
Telephone +353 (0)87 9074686
Fax
e-Mail paul@lightdesign.ie

Chem IBC Store / Photometric Results

Total Luminous Flux: 249888 lm
Total Load: 1600.0 W
Maintenance factor: 0.80
Boundary Zone: 0.000 m

Surface	Average illuminances [lx]			Reflection factor [%]	Average luminance [cd/m ²]
	direct	indirect	total		
Workplane	613	49	662	/	/
Chem IBC Store nett Floor Area Lux	690	46	736	/	/
Floor	613	49	662	15	32
Ceiling	0.00	77	77	30	7.37
Wall 1	155	61	217	30	21
Wall 2	167	59	226	30	22
Wall 3	149	63	212	30	20
Wall 4	119	54	173	30	17

Uniformity on the working plane

u0: 0.371 (1:3)

E_{min} / E_{max}: 0.271 (1:4)

Illuminance Quotient (according to LG7): Walls / Working Plane: 0.316, Ceiling / Working Plane: 0.117.

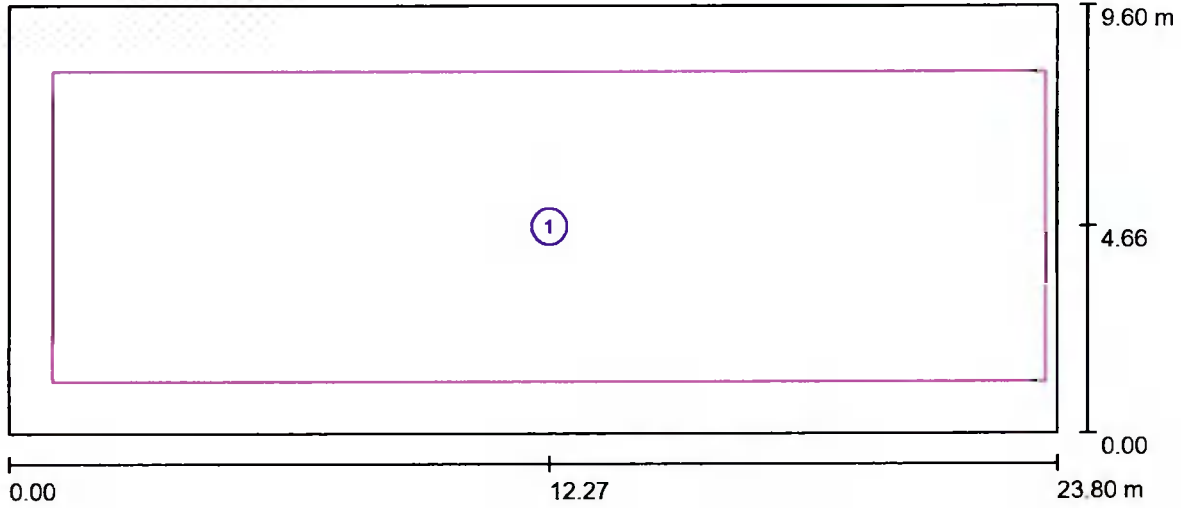
Specific connected load: 7.00 W/m² = 1.06 W/m²/100 lx (Ground area: 228.48 m²)

Light Design

27 Canal Walk,
Parkwest Ind. Est., Dublin D12 D12W2.

Operator Paul Brennan
Telephone +353 (0)87 9074686
Fax
e-Mail paul@lightdesign.ie

Chem IBC Store / Calculation surfaces (results overview)



Scale 1 : 171

Calculation Surface List

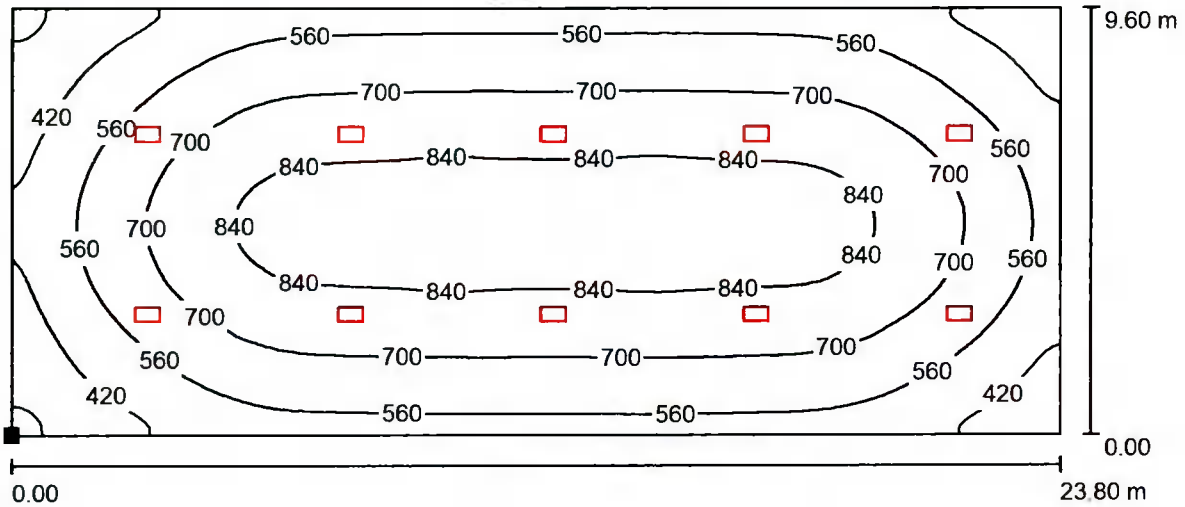
No.	Designation	Type	Grid	E_{av} [lx]	E_{min} [lx]	E_{max} [lx]	u0	E_{min} / E_{max}
1	Chem IBC Store nett Floor Area Lux	perpendicular	64 x 32	736	387	905	0.525	0.427

Light Design

27 Canal Walk,
Parkwest Ind. Est., Dublin D12 D12W2

Operator Paul Brennan
Telephone +353 (0)87 9074686
Fax
e-Mail paul@lightdesign.ie

Chem IBC Store / Workplane / Isolines (E)



Values in Lux, Scale 1 : 171

Position of surface in room:
Marked point:
(0.000 m, 0.000 m, 0.000 m)



Grid: 128 x 128 Points

E_{av} [lx]
662

E_{min} [lx]
246

E_{max} [lx]
907

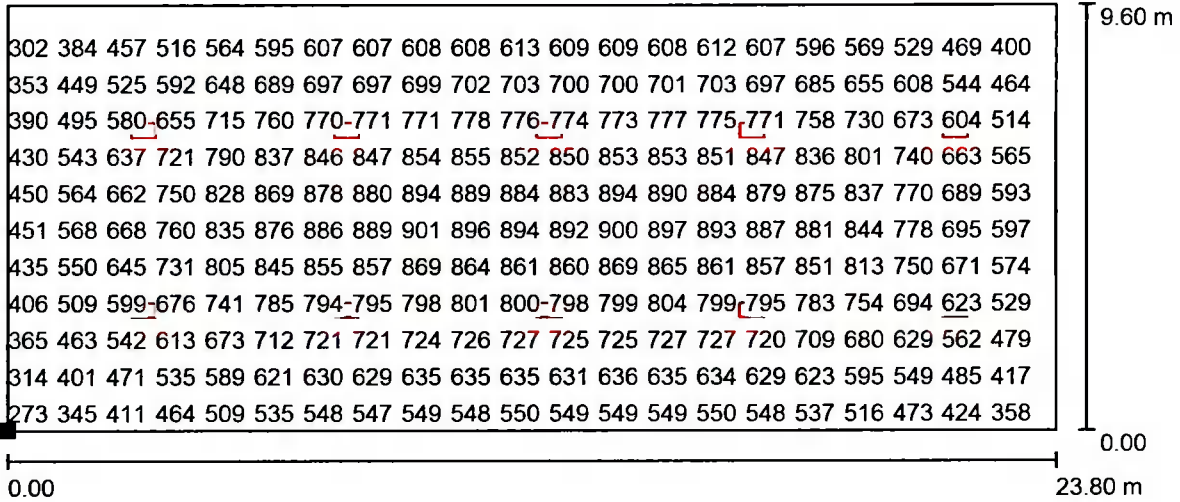
u_0
0.371

E_{min} / E_{max}
0.271

Light Design
 27 Canal Walk,
 Parkwest Ind. Est., Dublin D12 D12W2.

Operator Paul Brennan
 Telephone +353 (0)87 9074686
 Fax
 e-Mail paul@lightdesign.ie

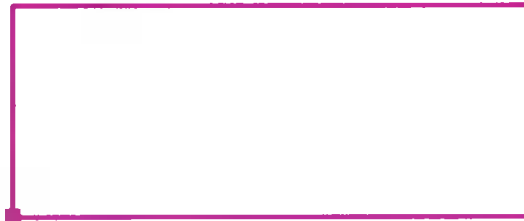
Chem IBC Store / Workplane / Value Chart (E)



Values in Lux, Scale 1 : 171

Not all calculated values could be displayed.

Position of surface in room:
 Marked point:
 (0.000 m, 0.000 m, 0.000 m)



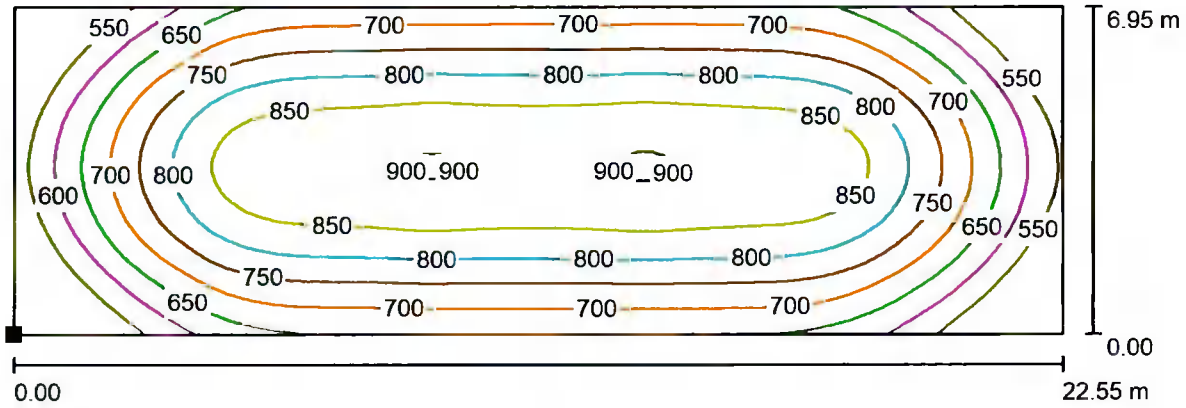
Grid: 128 x 128 Points

E_{av} [lx]	E_{min} [lx]	E_{max} [lx]	$u0$	E_{min} / E_{max}
662	246	907	0.371	0.271

Light Design
 27 Canal Walk,
 Parkwest Ind. Est., Dublin D12 D12W2

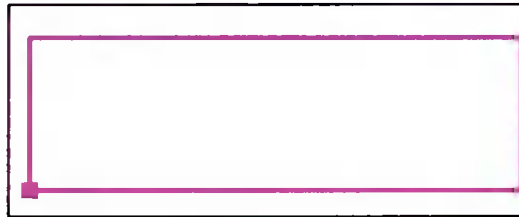
Operator Paul Brennan
 Telephone +353 (0)87 9074686
 Fax
 e-Mail paul@lightdesign.ie

Chem IBC Store / Chem IBC Store nett Floor Area Lux / Isolines (E, Perpendicular)



Values in Lux, Scale 1 : 162

Position of surface in room:
 Marked point:
 (0.996 m, 1.179 m, 0.010 m)



Grid: 64 x 32 Points

E_{av} [lx]
 736

E_{min} [lx]
 387

E_{max} [lx]
 905

u_0
 0.525

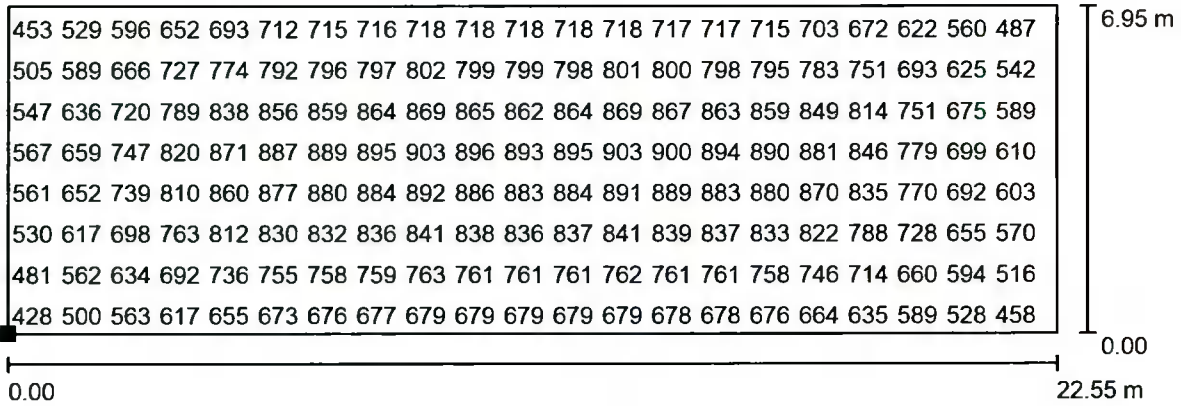
E_{min} / E_{max}
 0.427

Light Design

27 Canal Walk,
Parkwest Ind. Est., Dublin D12 D12W2.

Operator Paul Brennan
Telephone +353 (0)87 9074686
Fax
e-Mail paul@lightdesign.ie

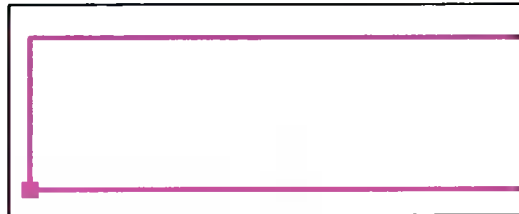
Chem IBC Store / Chem IBC Store nett Floor Area Lux / Value Chart (E, Perpendicular)



Values in Lux, Scale 1 : 162

Not all calculated values could be displayed.

Position of surface in room:
Marked point:
(0.996 m, 1.179 m, 0.010 m)



Grid: 64 x 32 Points

E_{av} [lx]
736

E_{min} [lx]
387

E_{max} [lx]
905

u_0
0.525

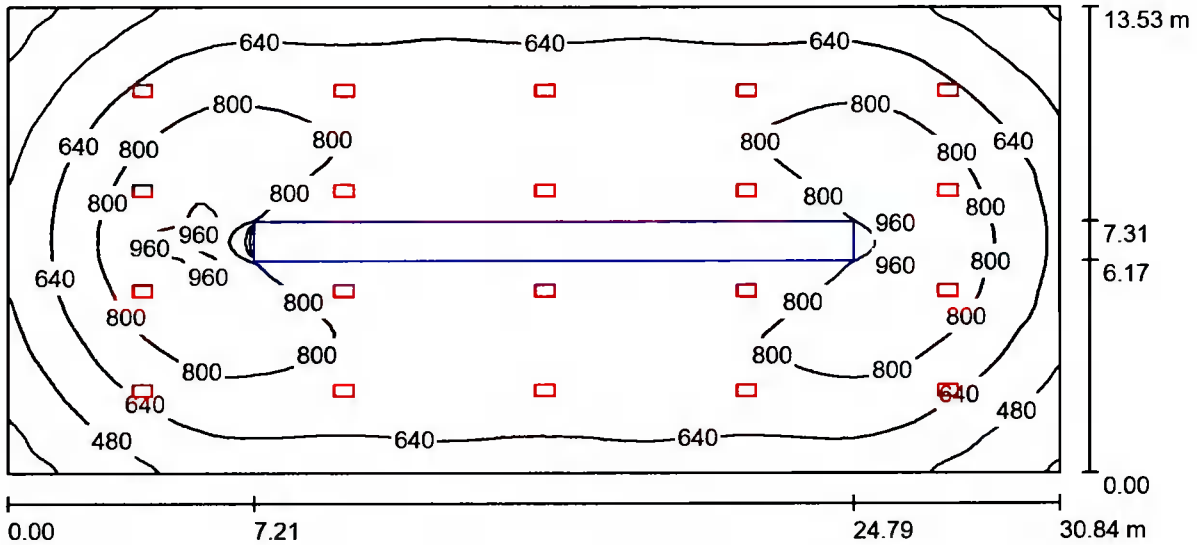
E_{min} / E_{max}
0.427

Light Design

27 Canal Walk,
Parkwest Ind. Est., Dublin D12 D12W2.

Operator Paul Brennan
Telephone +353 (0)87 9074686
Fax
e-Mail paul@lightdesign.ie

Enlarged Flavour Store / Summary



Height of Room: 6.000 m, Mounting Height: 5.800 m, Maintenance factor: 0.80

Values in Lux, Scale 1:221

Surface	ρ [%]	E_{av} [lx]	E_{min} [lx]	E_{max} [lx]	u_0
Workplane	/	698	258	1015	0.369
Floor	15	664	20	1013	0.031
Ceiling	30	98	53	191	0.539
Walls (4)	30	222	49	456	/

Workplane:

Height: 0.000 m
Grid: 128 x 128 Points
Boundary Zone: 0.000 m

Illuminance Quotient (according to LG7): Walls / Working Plane: 0.316, Ceiling / Working Plane: 0.140.

Luminaire Parts List

No.	Pieces	Designation (Correction Factor)	Φ (Luminaire) [lm]	Φ (Lamps) [lm]	P [W]
1	20	PHILIPS BY481P PSD WB LED250S/840 NO (1.000)	24989	25000	160.0
			Total: 499776	Total: 500000	3200.0

Specific connected load: $7.67 \text{ W/m}^2 = 1.10 \text{ W/m}^2/100 \text{ lx}$ (Ground area: 417.26 m^2)

Light Design

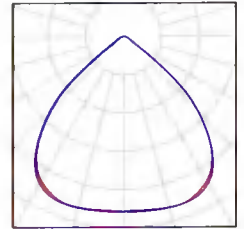
27 Canal Walk,
Parkwest Ind. Est., Dublin D12 D12W2.

Operator Paul Brennan
Telephone +353 (0)87 9074686
Fax
e-Mail paul@lightdesign.ie

Enlarged Flavour Store / Luminaire parts list

20 Pieces PHILIPS BY481P PSD WB LED250S/840 NO
Article No.:
Luminous flux (Luminaire): 24989 lm
Luminous flux (Lamps): 25000 lm
Luminaire Wattage: 160.0 W
Luminaire classification according to CIE: 100
CIE flux code: 69 98 100 100 100
Fitting: 1 x LED250S/840 (Correction Factor 1.000).

See our luminaire
catalog for an image of
the luminaire.



Light Design

27 Canal Walk,
Parkwest Ind. Est., Dublin D12 D12W2.

Operator Paul Brennan
Telephone +353 (0)87 9074686
Fax
e-Mail paul@lightdesign.ie

Enlarged Flavour Store / Photometric Results

Total Luminous Flux: 499776 lm
Total Load: 3200.0 W
Maintenance factor: 0.80
Boundary Zone: 0.000 m

Surface	Average illuminances [lx]			Reflection factor [%]	Average luminance [cd/m ²]
	direct	indirect	total		
Workplane	641	58	698	/	/
Chem IBC Store nett Floor Area Lux	685	56	741	/	/
Floor	610	54	664	15	32
Ceiling	0.00	98	98	30	9.35
Wall 1	163	68	231	30	22
Wall 2	154	66	220	30	21
Wall 3	162	73	235	30	22
Wall 4	112	62	174	30	17

Uniformity on the working plane

u₀: 0.369 (1:3)

E_{min} / E_{max}: 0.254 (1:4)

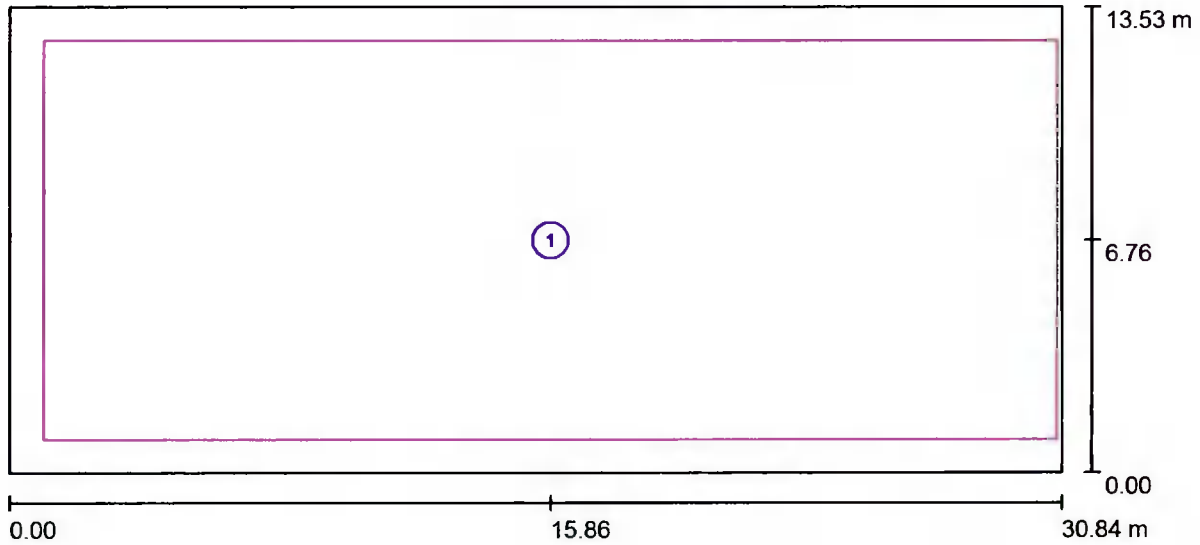
Illuminance Quotient (according to LG7): Walls / Working Plane: 0.316, Ceiling / Working Plane: 0.140.

Specific connected load: 7.67 W/m² = 1.10 W/m²/100 lx (Ground area: 417.26 m²)

Light Design
 27 Canal Walk,
 Parkwest Ind. Est., Dublin D12 D12W2.

Operator Paul Brennan
 Telephone +353 (0)87 9074686
 Fax
 e-Mail paul@lightdesign.ie

Enlarged Flavour Store / Calculation surfaces (results overview)



Scale 1 : 221

Calculation Surface List

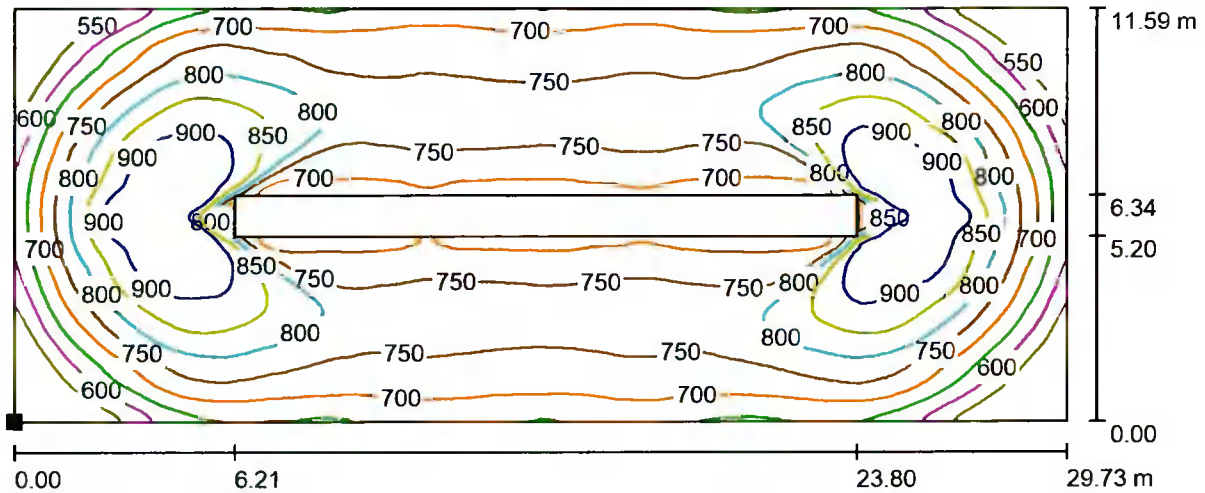
No.	Designation	Type	Grid	E_{av} [lx]	E_{min} [lx]	E_{max} [lx]	u0	$\frac{E_{min}}{E_{max}}$
1	Chem IBC Store nett Floor Area Lux	perpendicular	128 x 128	741	364	1022	0.492	0.357

Light Design

27 Canal Walk,
Parkwest Ind. Est., Dublin D12 D12W2

Operator Paul Brennan
Telephone +353 (0)87 9074686
Fax
e-Mail paul@lightdesign.ie

Enlarged Flavour Store / Chem IBC Store nett Floor Area Lux / Isolines (E, Perpendicular)



Values in Lux, Scale 1 : 213

Position of surface in room:
Marked point:
(0.996 m, 0.965 m, 0.010 m)



Grid: 128 x 128 Points

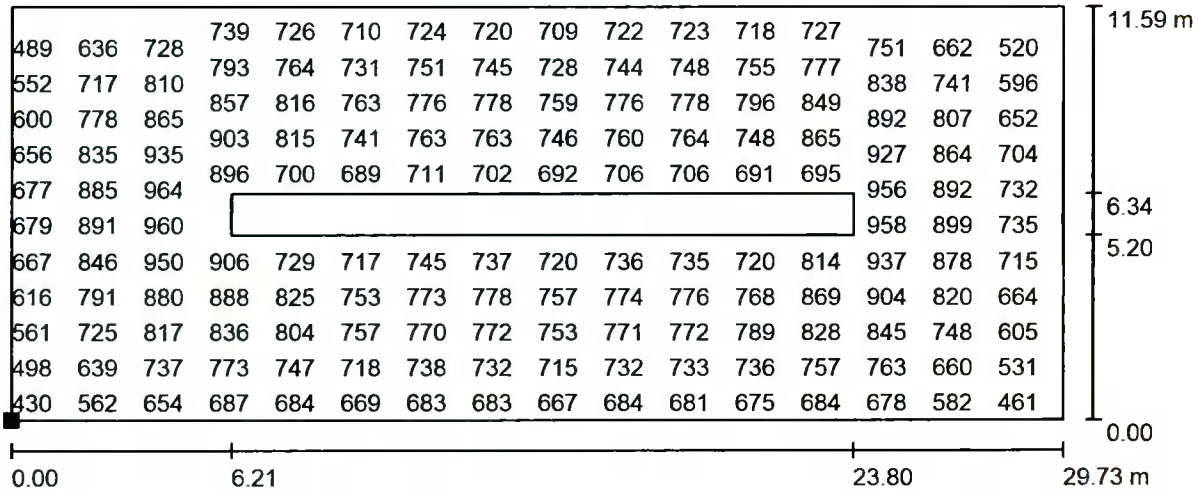
E_{av} [lx]	E_{min} [lx]	E_{max} [lx]	u0	E_{min} / E_{max}
741	364	1022	0.492	0.357

Light Design

27 Canal Walk,
Parkwest Ind. Est., Dublin D12 D12W2.

Operator Paul Brennan
Telephone +353 (0)87 9074686
Fax
e-Mail paul@lightdesign.ie

Enlarged Flavour Store / Chem IBC Store nett Floor Area Lux / Value Chart (E, Perpendicular)



Values in Lux, Scale 1 : 213

Not all calculated values could be displayed.

Position of surface in room:
Marked point:
(0.996 m, 0.965 m, 0.010 m)



Grid: 128 x 128 Points

E_{av} [lx]
741

E_{min} [lx]
364

E_{max} [lx]
1022

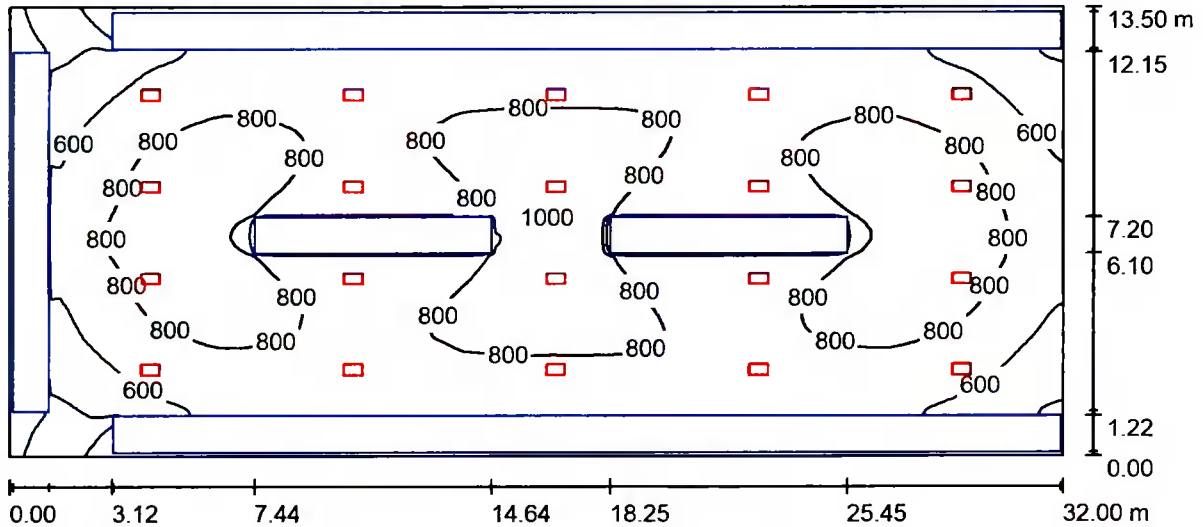
u_0
0.492

E_{min} / E_{max}
0.357

Light Design
 27 Canal Walk,
 Parkwest Ind. Est., Dublin D12 D12W2.

Operator Paul Brennan
 Telephone +353 (0)87 9074686
 Fax
 e-Mail paul@lightdesign.ie

Bottle Store Revised 20211003 / Summary



Height of Room: 7.200 m, Mounting Height: 6.100 m, Maintenance factor: 0.80 Values in Lux, Scale 1:229

Surface	ρ [%]	E_{av} [lx]	E_{min} [lx]	E_{max} [lx]	u_0
Workplane	/	716	14	1011	0.020
Floor	15	564	5.50	1011	0.010
Ceiling	30	79	28	125	0.351
Walls (4)	30	46	1.99	513	/

Workplane:

Height: 0.000 m
 Grid: 128 x 128 Points
 Boundary Zone: 0.000 m

Illuminance Quotient (according to LG7): Walls / Working Plane: 0.065, Ceiling / Working Plane: 0.111.

Luminaire Parts List

No.	Pieces	Designation (Correction Factor)	Φ (Luminaire) [lm]	Φ (Lamps) [lm]	P [W]
1	20	PHILIPS BY481P PSD WB LED250S/840 NO (1.000)	24989	25000	160.0
Total:			499776	500000	3200.0

Specific connected load: $7.41 \text{ W/m}^2 = 1.03 \text{ W/m}^2/100 \text{ lx}$ (Ground area: 432.00 m^2)

Light Design

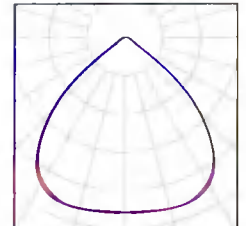
27 Canal Walk,
Parkwest Ind. Est., Dublin D12 D12W2.

Operator Paul Brennan
Telephone +353 (0)87 9074686
Fax
e-Mail paul@lightdesign.ie

Bottle Store Revised 20211003 / Luminaire parts list

20 Pieces PHILIPS BY481P PSD WB LED250S/840 NO
Article No.:
Luminous flux (Luminaire): 24989 lm
Luminous flux (Lamps): 25000 lm
Luminaire Wattage: 160.0 W
Luminaire classification according to CIE: 100
CIE flux code: 69 98 100 100 100
Fitting: 1 x LED250S/840 (Correction Factor
1.000).

See our luminaire
catalog for an image of
the luminaire.

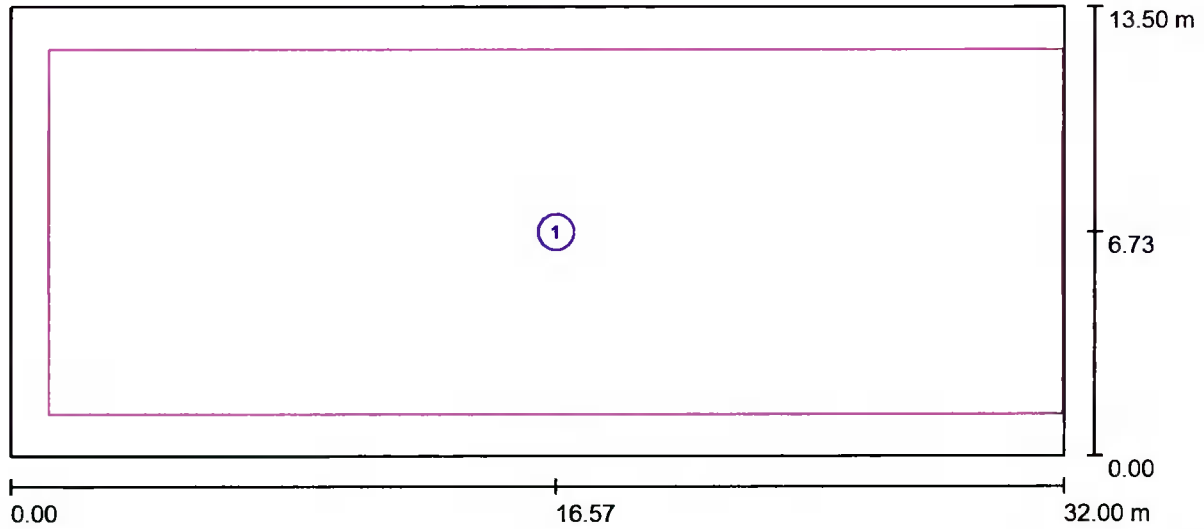


Light Design

27 Canal Walk,
Parkwest Ind. Est., Dublin D12 D12W2.

Operator Paul Brennan
Telephone +353 (0)87 9074686
Fax
e-Mail paul@lightdesign.ie

Bottle Store Revised 20211003 / Calculation surfaces (coordinates list)



Scale 1 : 229

Calculation Surface List

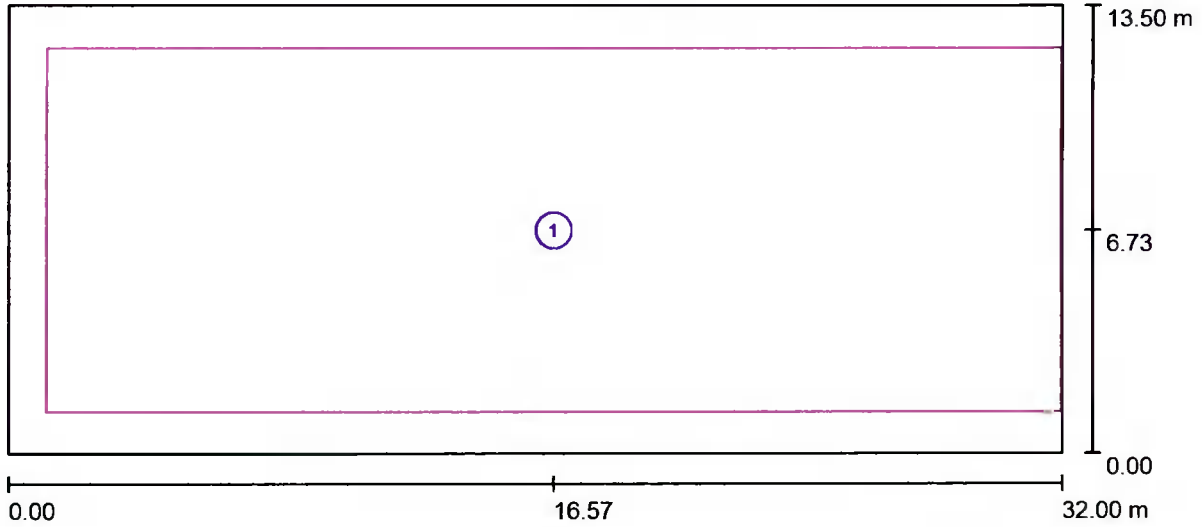
No.	Designation	Position [m]			Size [m]		Rotation [°]		
		X	Y	Z	L	W	X	Y	Z
1	Calculation Surface 1	16.567	6.734	0.010	30.811	10.968	0.000	0.000	0.000

Light Design

27 Canal Walk,
Parkwest Ind. Est. Dublin D12 D12W2.

Operator Paul Brennan
Telephone +353 (0)87 9074686
Fax
e-Mail paul@lightdesign.ie

Bottle Store Revised 20211003 / Calculation surfaces (results overview)



Scale 1 : 229

Calculation Surface List

No.	Designation	Type	Grid	E_{av} [lx]	E_{min} [lx]	E_{max} [lx]	u0	E_{min} / E_{max}
1	Calculation Surface 1	perpendicular	128 x 128	751	368	1009	0.490	0.365

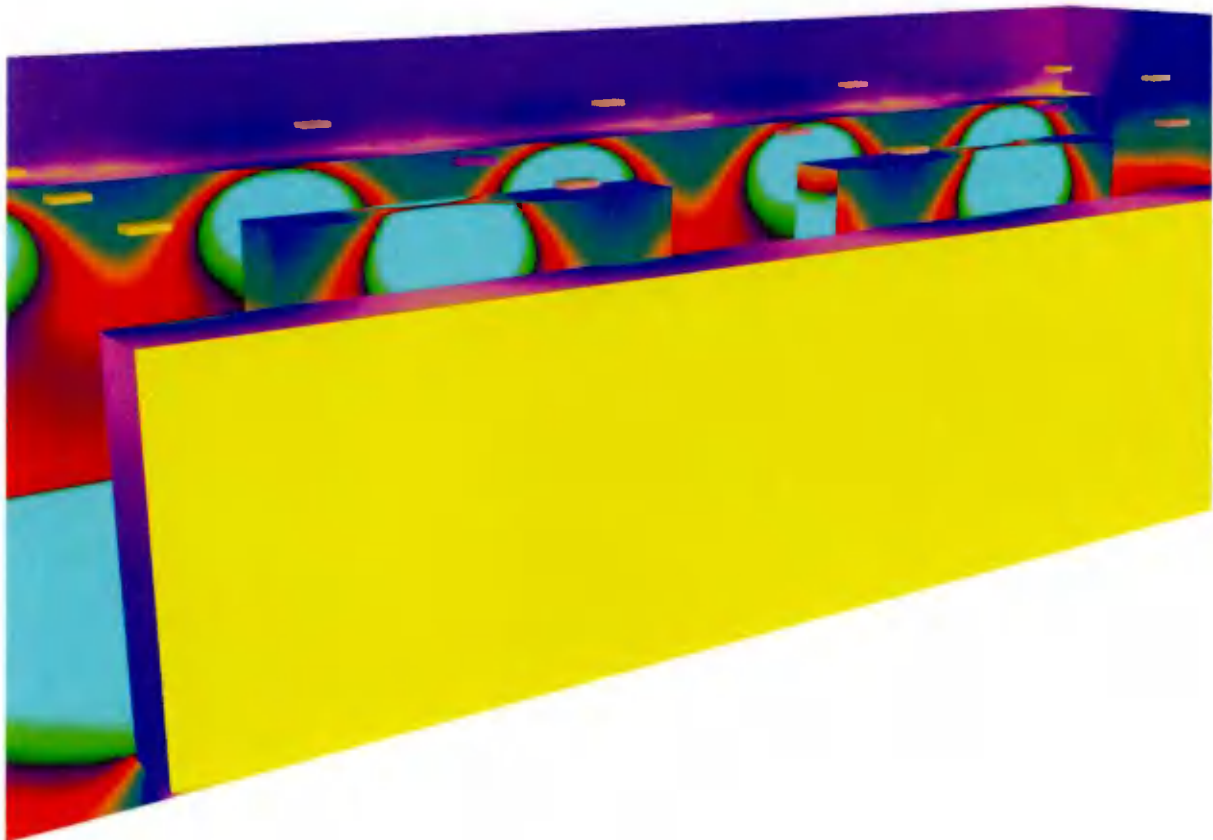


Light Design

27 Canal Walk,
Parkwest Ind. Est., Dublin D12 D12W2.

Operator Paul Brennan
Telephone +353 (0)87 9074686
Fax
e-Mail paul@lightdesign.ie

Bottle Store Revised 20211003 / False Color Rendering



10 30 50 100 200 300 400 500 600

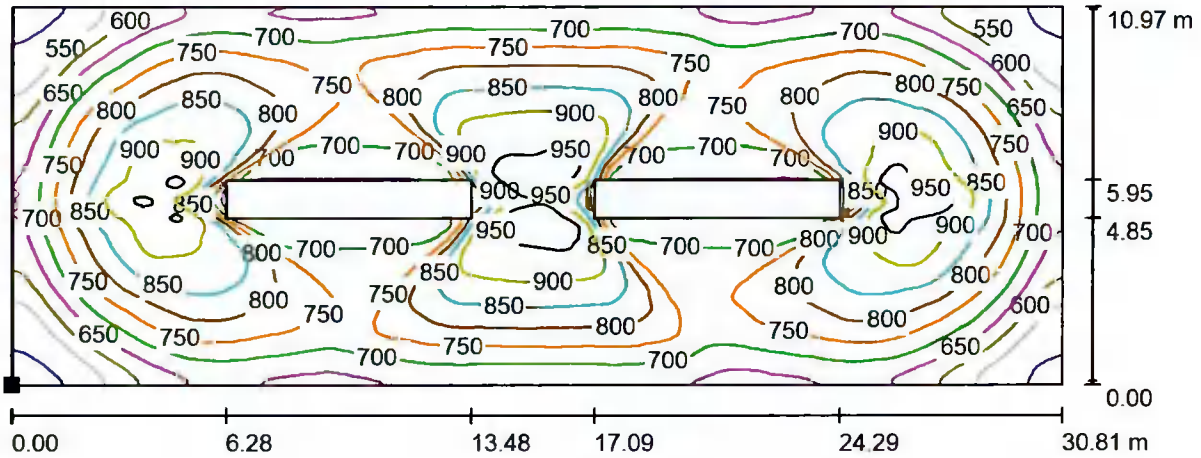
lx

Light Design

27 Canal Walk,
Parkwest Ind. Est., Dublin D12 D12W2.

Operator Paul Brennan
Telephone +353 (0)87 9074686
Fax
e-Mail paul@lightdesign.ie

Bottle Store Revised 20211003 / Calculation Surface 1 / Isolines (E, Perpendicular)



Values in Lux, Scale 1 : 221

Position of surface in room:
Marked point:
(1.162 m, 1.250 m, 0.010 m)



Grid: 128 x 128 Points

E_{av} [lx]
751

E_{min} [lx]
368

E_{max} [lx]
1009

u_0
0.490

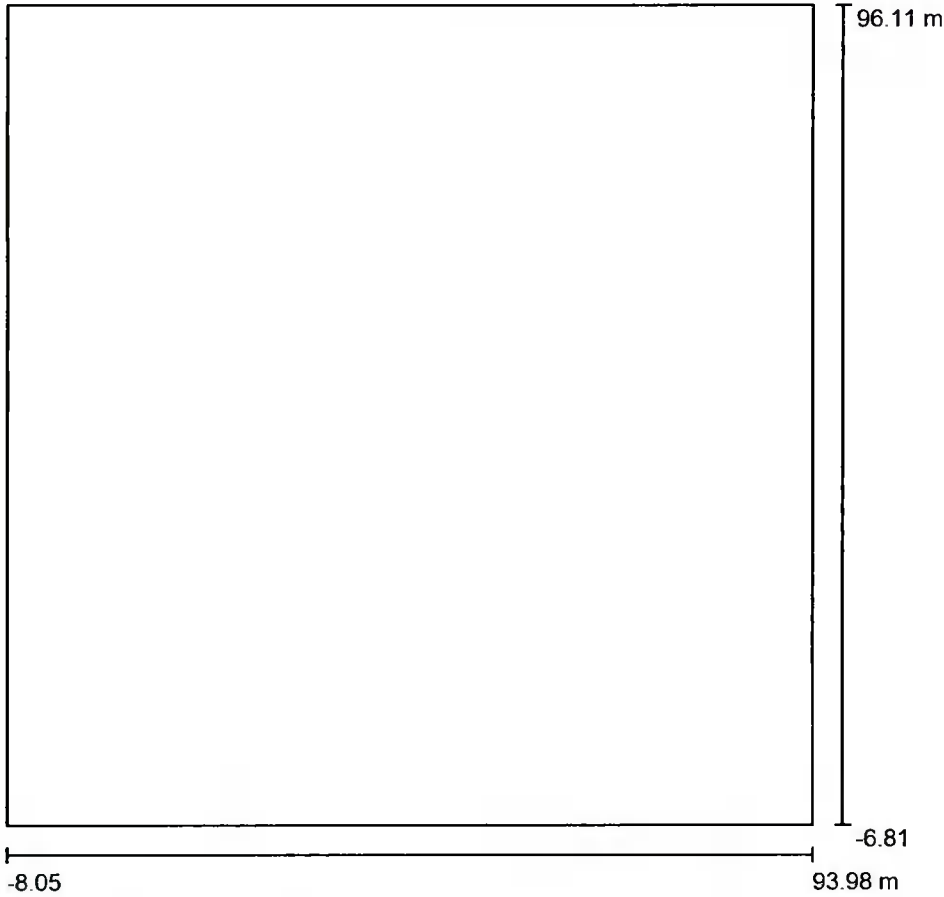
E_{min} / E_{max}
0.365

Light Design

27 Canal Walk,
Parkwest Ind. Est., Dublin D12 D12W2

Operator Paul Brennan
Telephone +353 (0)87 9074686
Fax
e-Mail paul@lightdesign.ie

Bottle Store Revised External Lighting 20211003 / Planning data



Maintenance factor: 0.80, ULR (Upward Light Ratio): 0.0%

Scale 1:955

Luminaire Parts List

No.	Pieces	Designation (Correction Factor)	Φ (Luminaire) [lm]	Φ (Lamps) [lm]	P [W]
1	12	LEDVANCE GmbH 4058075353688 FL PFM 100W/4000K ASYM 45x140 BK (1.000)	12801	12800	100.0
Total:			153614	153600	1200.0



Light Design

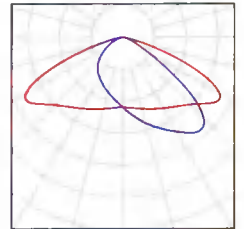
27 Canal Walk,
Parkwest Ind. Est., Dublin D12 D12W2.

Operator Paul Brennan
Telephone +353 (0)87 9074686
Fax
e-Mail paul@lightdesign.ie

Bottle Store Revised External Lighting 20211003 / Luminaire parts list

12 Pieces LEDVANCE GmbH 4058075353688 FL PFM
100W/4000K ASYM 45x140 BK
Article No.: 4058075353688
Luminous flux (Luminaire): 12801 lm
Luminous flux (Lamps): 12800 lm
Luminaire Wattage: 100.0 W
Luminaire classification according to CIE: 100
CIE flux code: 39 80 98 100 100
Fitting: 1 x LED (Correction Factor 1.000).

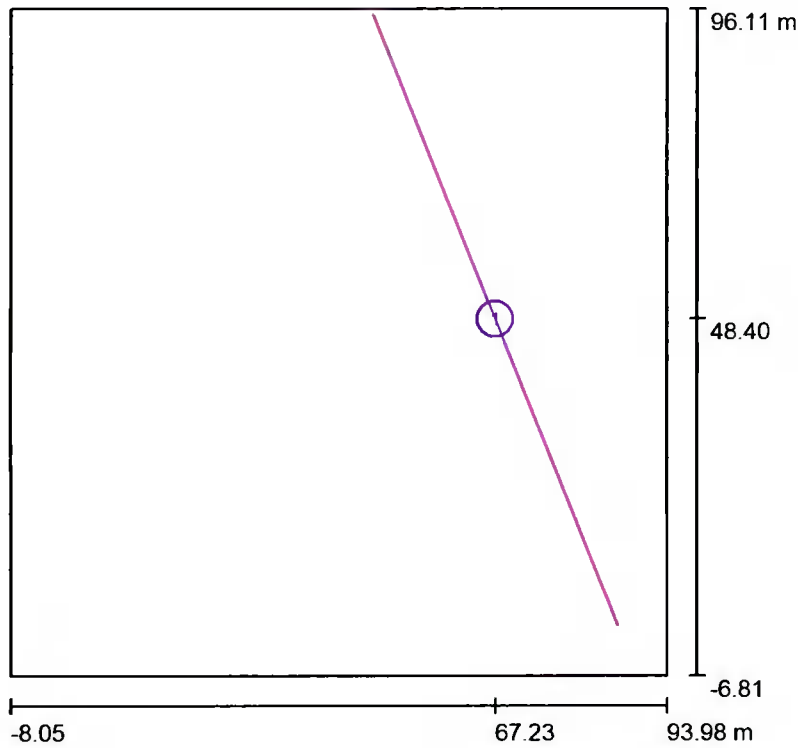
See our luminaire
catalog for an image of
the luminaire.



Light Design
 27 Canal Walk,
 Parkwest Ind. Est., Dublin D12 D12W2.

Operator Paul Brennan
 Telephone +353 (0)87 9074686
 Fax
 e-Mail paul@lightdesign.ie

Bottle Store Revised External Lighting 20211003 / Calculation surfaces (results overview)



Scale 1 : 1172

Calculation Surface List

No.	Designation	Type	Grid	E_{av} [lx]	E_{min} [lx]	E_{max} [lx]	u0	E_{min} / E_{max}
1	Calculation Surface 1	perpendicular	64 x 2	0.27	0.07	0.49	0.240	0.135

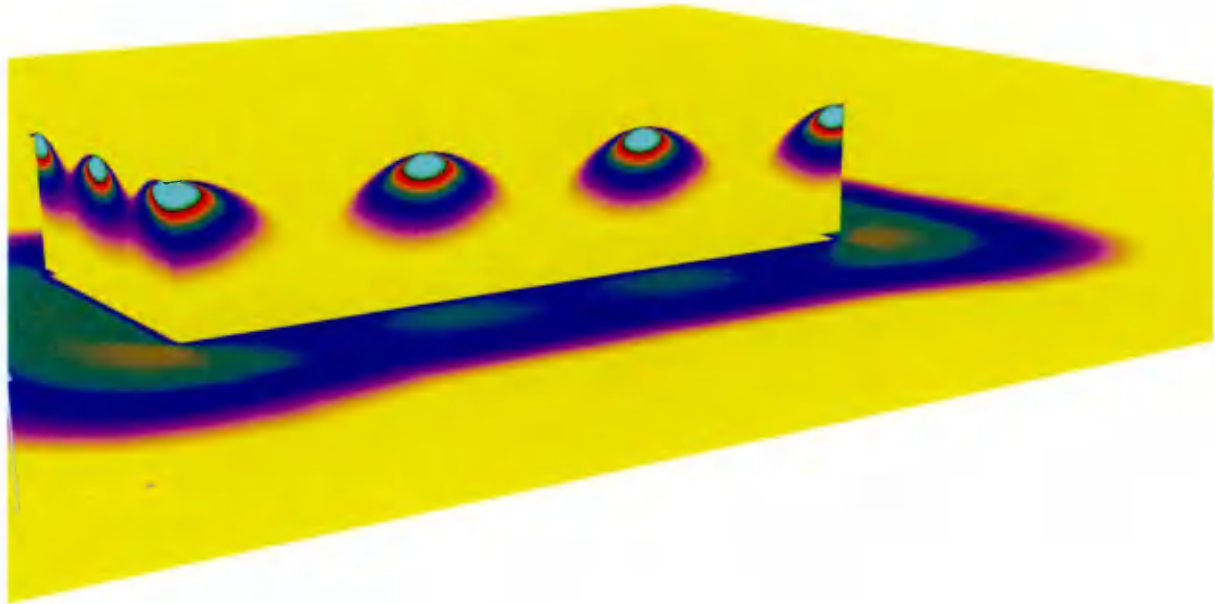


Light Design

27 Canal Walk,
Parkwest Ind. Est., Dublin D12 D12W2.

Operator Paul Brennan
Telephone +353 (0)87 9074686
Fax
e-Mail paul@lightdesign.ie

Bottle Store Revised External Lighting 20211003 / False Color Rendering



10 30 50 100 200 300 400 500 600

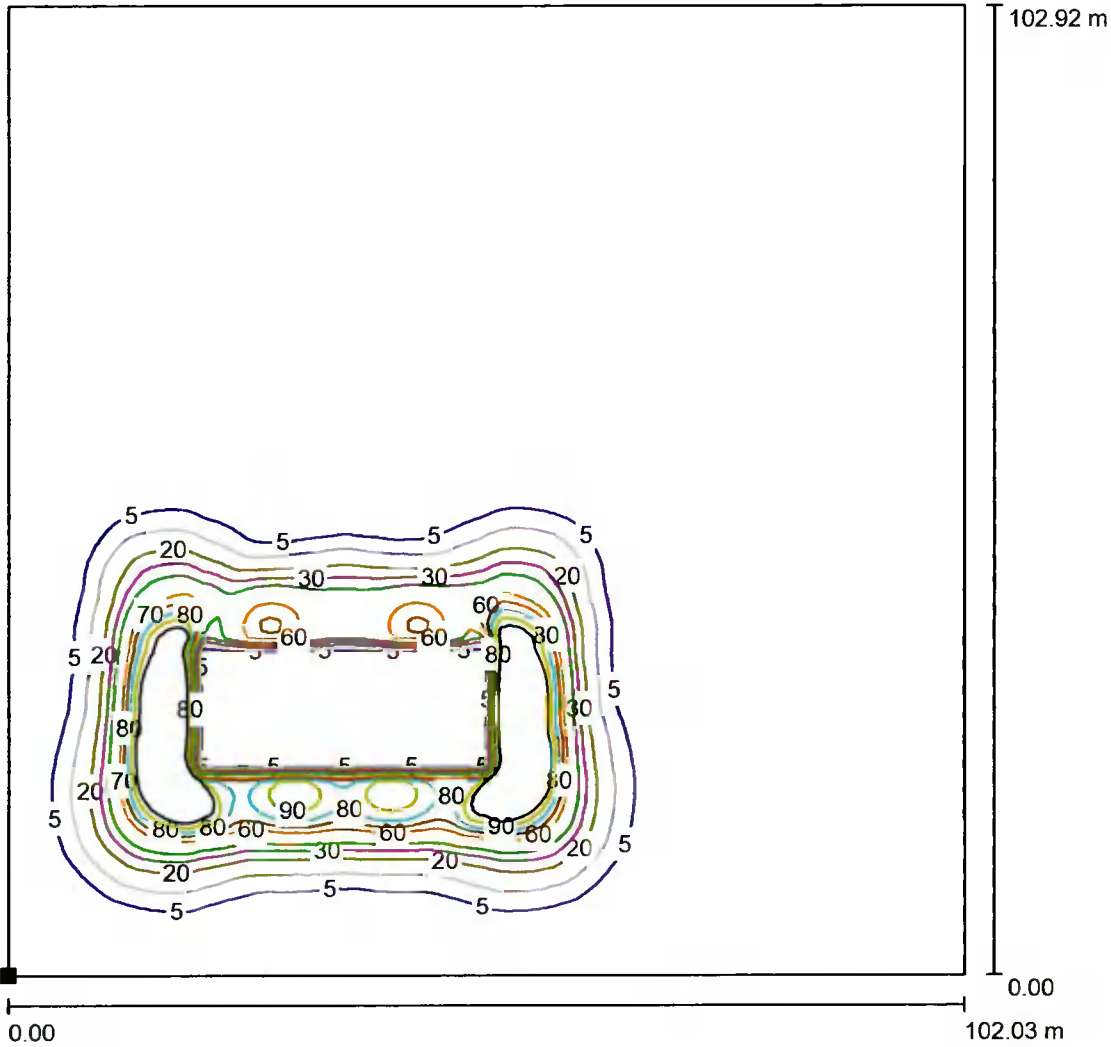
lx

Light Design

27 Canal Walk,
Parkwest Ind. Est., Dublin D12 D12W2.

Operator Paul Brennan
Telephone +353 (0)87 9074686
Fax
e-Mail paul@lightdesign.ie

Bottle Store Revised External Lighting 20211003 / Ground Element 1 / Calculating Grid at Canal / Isolines (E)



Values in Lux, Scale 1 : 805

Position of surface in external scene:
Marked point:
(-8.050 m, -6.810 m, 0.000 m)



Grid: 128 x 128 Points

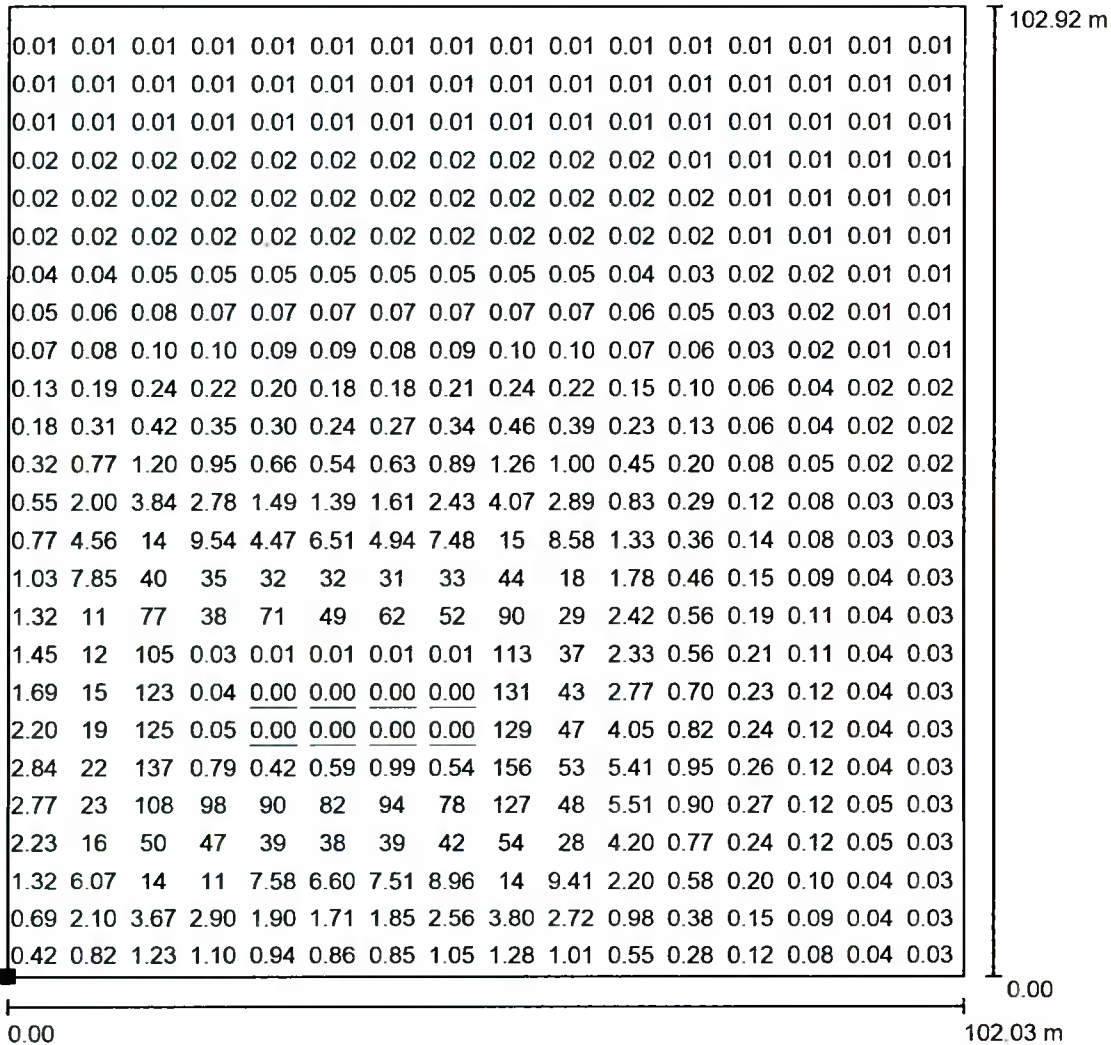
E_{av} [lx]	E_{min} [lx]	E_{max} [lx]	u0	E_{min} / E_{max}
8.80	0.00	166	0.000	0.000

Light Design

27 Canal Walk,
Parkwest Ind. Est., Dublin D12 D12W2.

Operator Paul Brennan
Telephone +353 (0)87 9074686
Fax
e-Mail paul@lightdesign.ie

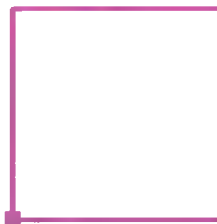
Bottle Store Revised External Lighting 20211003 / Ground Element 1 / Calculating Grid at Canal / Value Chart (E)



Values in Lux, Scale 1 : 805

Not all calculated values could be displayed.

Position of surface in external scene:
Marked point:
(-8.050 m, -6.810 m, 0.000 m)



Grid: 128 x 128 Points

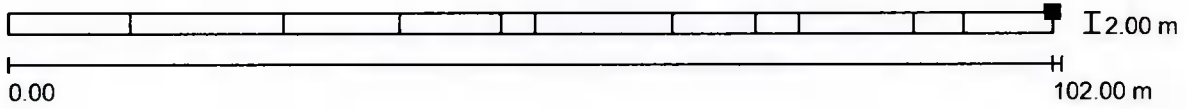
E_{av} [lx]	E_{min} [lx]	E_{max} [lx]	u0	E_{min} / E_{max}
8.80	0.00	166	0.000	0.000

Light Design

27 Canal Walk,
Parkwest Ind. Est., Dublin D12 D12W2

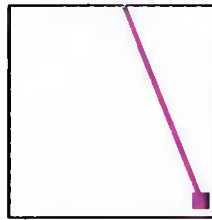
Operator Paul Brennan
Telephone +353 (0)87 9074686
Fax
e-Mail paul@lightdesign.ie

Bottle Store Revised External Lighting 20211003 / Calculation Surface 1 / Isolines (E, Perpendicular)



Values in Lux, Scale 1 : 730

Position of surface in external scene:
Marked point:
(86.336 m, 1.113 m, 4.000 m)



Grid: 64 x 2 Points

E_{av} [lx]
0.27

E_{min} [lx]
0.07

E_{max} [lx]
0.49

$u0$
0.240

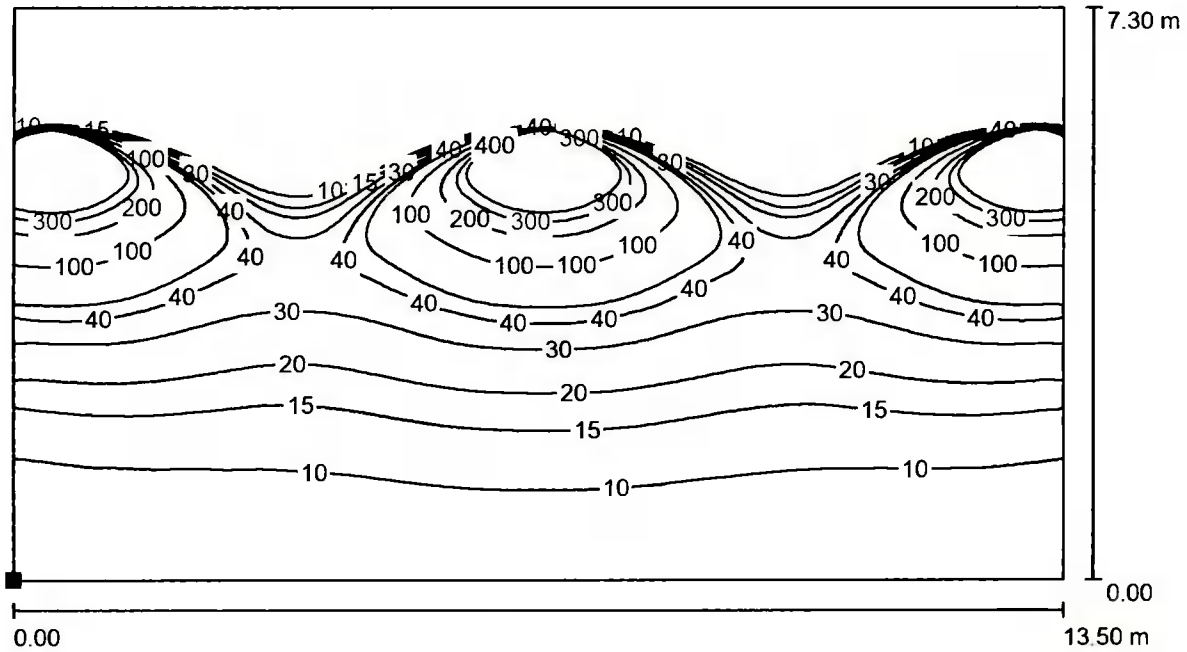
E_{min} / E_{max}
0.135

Light Design

27 Canal Walk,
Parkwest Ind. Est., Dublin D12 D12W2.

Operator Paul Brennan
Telephone +353 (0)87 9074686
Fax
e-Mail paul@lightdesign.ie

Bottle Store Revised External Lighting 20211003 / Bottle Store / Bottle Store South External Wall / Isolines (E)

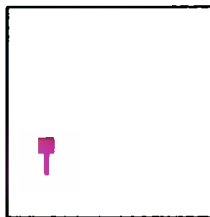


Values in Lux, Scale 1 : 97

Position of surface in external scene:

Marked point:

(11.500 m, 28.532 m, 0.350 m)



Grid: 128 x 128 Points

E_{av} [lx]
82

E_{min} [lx]
0.00

E_{max} [lx]
5277

$u0$
0.000

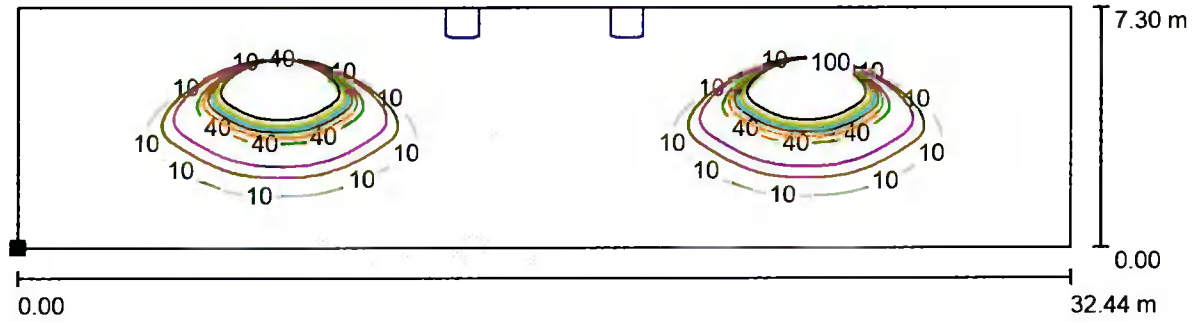
E_{min} / E_{max}
0.000

Light Design

27 Canal Walk,
Parkwest Ind. Est., Dublin D12 D12W2.

Operator Paul Brennan
Telephone +353 (0)87 9074686
Fax
e-Mail paul@lightdesign.ie

**Bottle Store Revised External Lighting 20211003 / Bottle Store / Bottle Store West
External Wall / Isolines (E)**



Values in Lux, Scale 1 : 232

Position of surface in external scene:
Marked point:
(43.943 m, 28.532 m, 0.350 m)



Grid: 128 x 128 Points

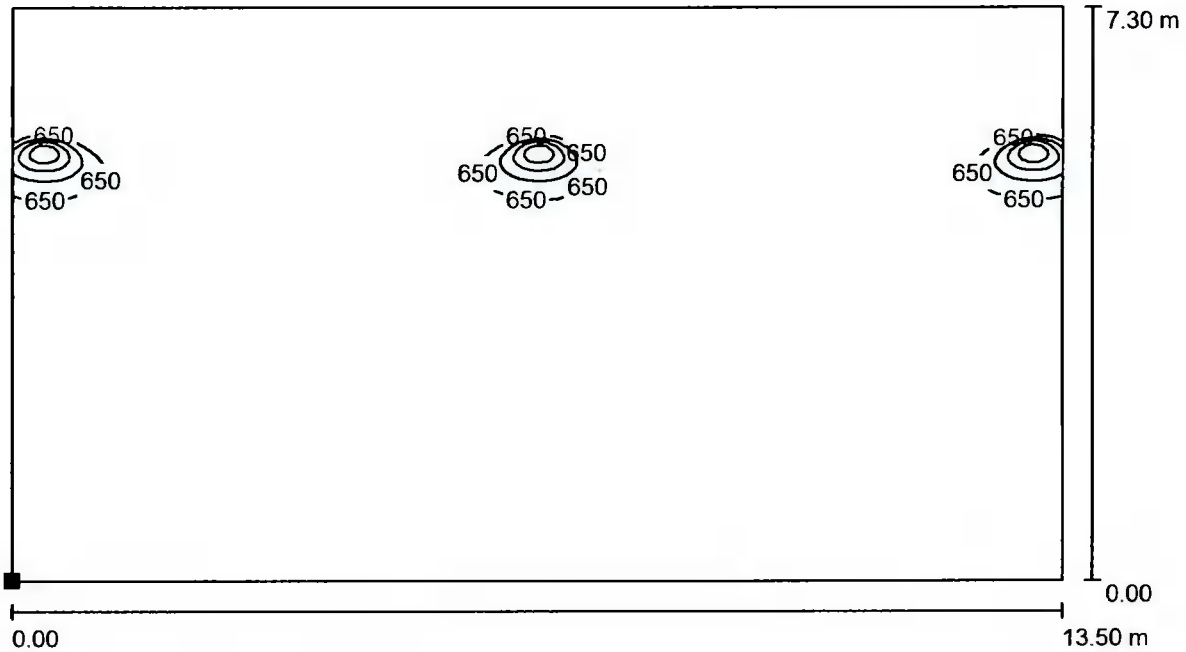
E_{av} [lx]	E_{min} [lx]	E_{max} [lx]	$u0$	E_{min} / E_{max}
27	0.00	3286	0.000	0.000

Light Design

27 Canal Walk,
Parkwest Ind. Est., Dublin D12 D12W2

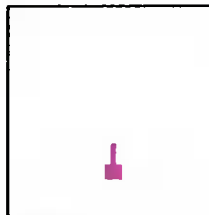
Operator Paul Brennan
Telephone +353 (0)87 9074686
Fax
e-Mail paul@lightdesign.ie

**Bottle Store Revised External Lighting 20211003 / Bottle Store / Bottle Store North
External Wall / Isolines (E)**



Values in Lux, Scale 1 : 97

Position of surface in external scene:
Marked point:
(43.943 m, 15.032 m, 0.350 m)



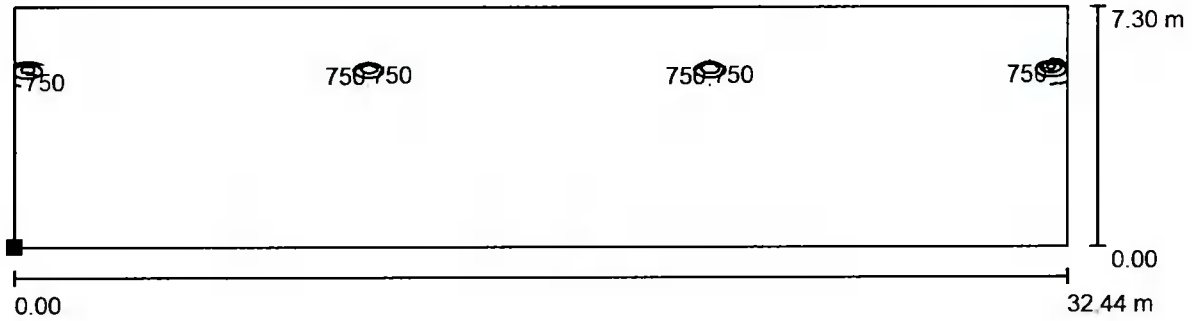
Grid: 128 x 128 Points

E_{av} [lx]	E_{min} [lx]	E_{max} [lx]	u_0	E_{min} / E_{max}
78	0.00	3249	0.000	0.000

Light Design
27 Canal Walk,
Parkwest Ind. Est., Dublin D12 D12W2.

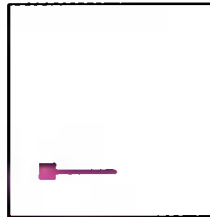
Operator Paul Brennan
Telephone +353 (0)87 9074686
Fax
e-Mail paul@lightdesign.ie

**Bottle Store Revised External Lighting 20211003 / Bottle Store / Bottle Store East
External Wall / Isolines (E)**



Values in Lux, Scale 1 : 232

Position of surface in external scene:
Marked point:
(11.500 m, 15.032 m, 0.350 m)



Grid: 128 x 128 Points

E_{av} [lx]	E_{min} [lx]	E_{max} [lx]	u0	E_{min} / E_{max}
46	0.00	3577	0.000	0.000

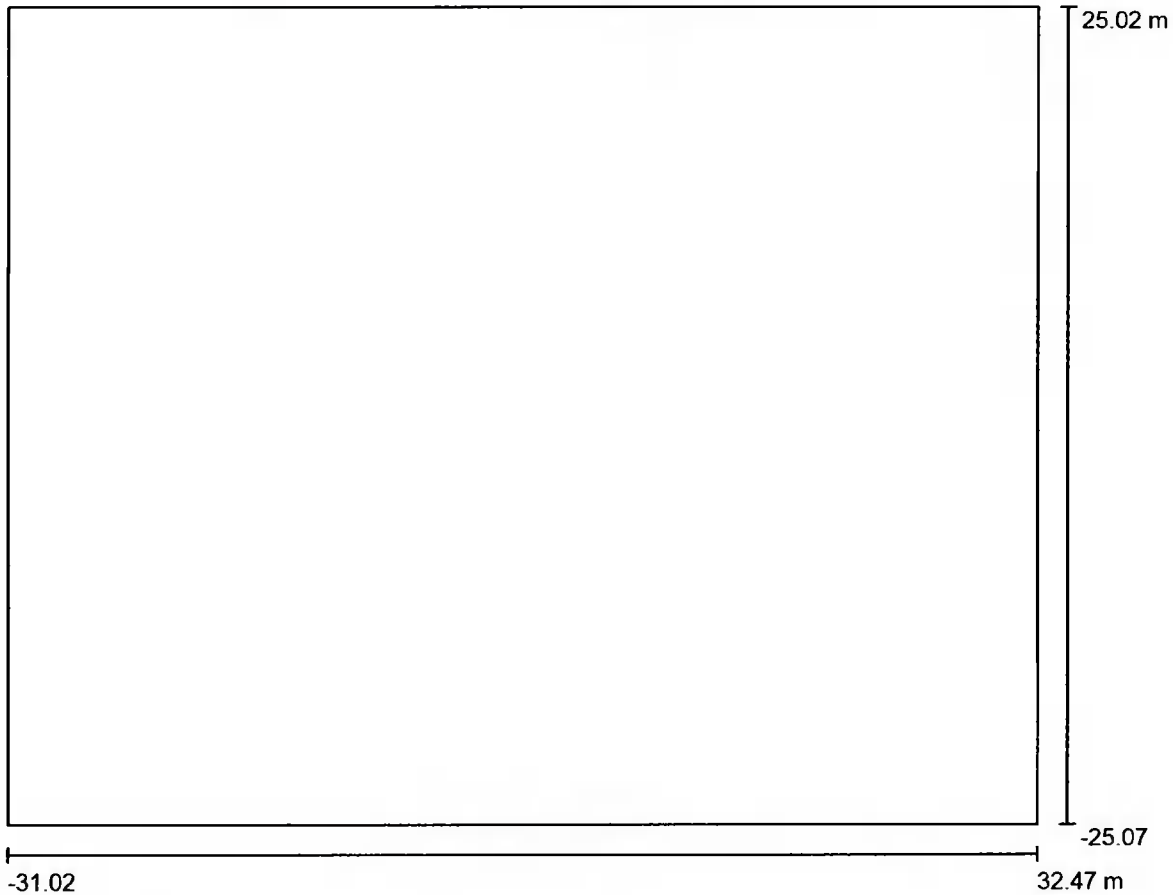


Light Design

27 Canal Walk,
Parkwest Ind. Est., Dublin D12 D12W2.

Operator Paul Brennan
Telephone +353 (0)87 9074686
Fax
e-Mail paul@lightdesign.ie

Chem IBC Store External Lighting / Planning data



Maintenance factor: 0.80, ULR (Upward Light Ratio): 0.0%

Scale 1:465

Luminaire Parts List

No.	Pieces	Designation (Correction Factor)	Φ (Luminaire) [lm]	Φ (Lamps) [lm]	P [W]
1	8	LEDVANCE GmbH 4058075353688 FL PFM 100W/4000K ASYM 45x140 BK (1.000)	12801	12800	100.0
Total:			102409	102400	800.0



Light Design

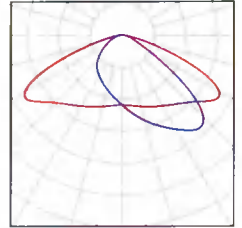
27 Canal Walk,
Parkwest Ind. Est., Dublin D12 D12W2.

Operator Paul Brennan
Telephone +353 (0)87 9074686
Fax
e-Mail paul@lightdesign.ie

Chem IBC Store External Lighting / Luminaire parts list

8 Pieces LEDVANCE GmbH 4058075353688 FL PFM
100W/4000K ASYM 45x140 BK
Article No.: 4058075353688
Luminous flux (Luminaire): 12801 lm
Luminous flux (Lamps): 12800 lm
Luminaire Wattage: 100.0 W
Luminaire classification according to CIE: 100
CIE flux code: 39 80 98 100 100
Fitting: 1 x LED (Correction Factor 1.000).

See our luminaire
catalog for an image of
the luminaire.

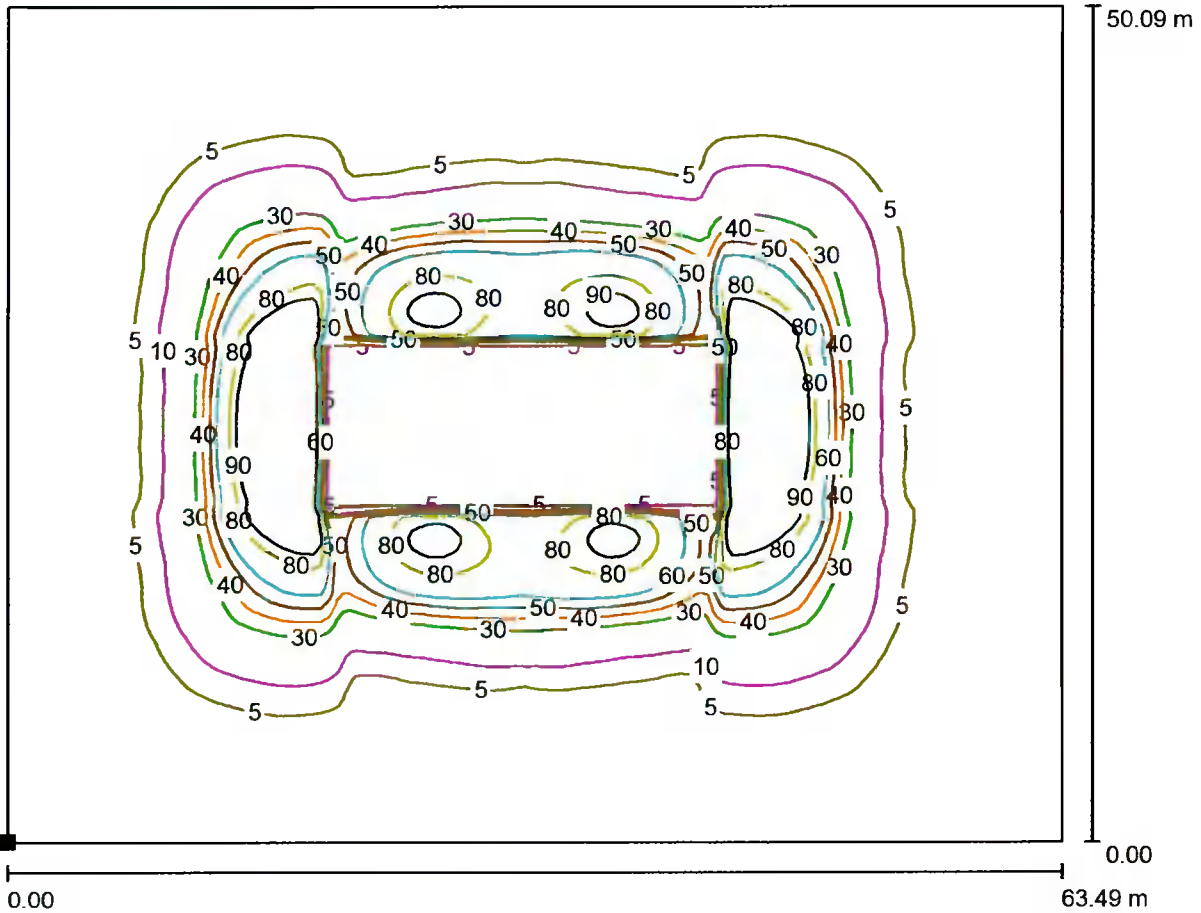


Light Design

27 Canal Walk,
Parkwest Ind. Est., Dublin D12 D12W2.

Operator Paul Brennan
Telephone +353 (0)87 9074686
Fax
e-Mail paul@lightdesign.ie

Chem IBC Store External Lighting / Ground Element 1 / Surface 1 / Isolines (E)



Values in Lux, Scale 1 : 454

Position of surface in external scene:

Marked point:
(-31.018 m, -25.069 m, 0.000 m)



Grid: 128 x 128 Points

E_{av} [lx]
18

E_{min} [lx]
0.01

E_{max} [lx]
130

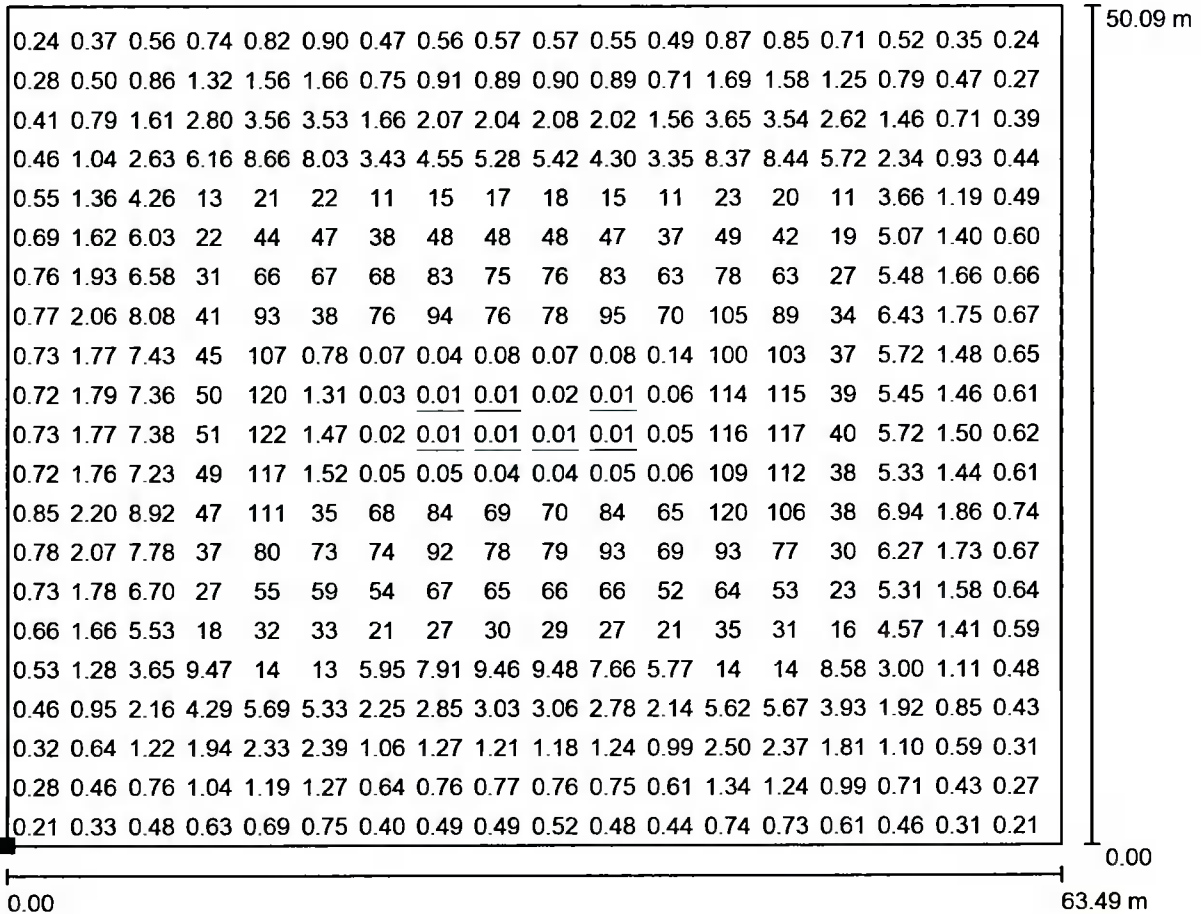
$u0$
0.000

E_{min} / E_{max}
0.000

Light Design
 27 Canal Walk,
 Parkwest Ind. Est., Dublin D12 D12W2.

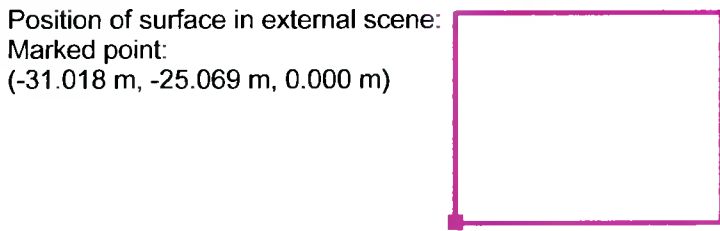
Operator Paul Brennan
 Telephone +353 (0)87 9074686
 Fax
 e-Mail paul@lightdesign.ie

Chem IBC Store External Lighting / Ground Element 1 / Surface 1 / Value Chart (E)



Not all calculated values could be displayed.

Values in Lux, Scale 1 : 454



Grid: 128 x 128 Points

E_{av} [lx]	E_{min} [lx]	E_{max} [lx]	u0	E_{min} / E_{max}
18	0.01	130	0.000	0.000