

Bottle Store for Diageo 20200906

This dialux Plot includes two options:

Option 1: 117 No. Titan 57 Watt Luminaires,

Option 2. 20 No. Philips BY471PLLuminaires.

Partner for Contact:

Order No.:

Company:

Customer No.:

Date: 07.09.2020

Operator: Paul Brennan

Bottle Store for Diageo 20200906



07.09.2020

Light Design

27 Canal Walk,
Parkwest Ind. Est.. Dublin D12 D12W2.

Operator Paul Brennan
Telephone +353 (0)87 9074686
Fax
e-Mail paul@lightdesign.ie

Table of contents

Bottle Store for Diageo 20200906	
Project Cover	1
Table of contents	2
PHILIPS BY471P HRO GC GRN250S/840 NO	
Luminaire Data Sheet	3
TITAN 57w	
Luminaire Data Sheet	4
Bottle Store w Titan 57 Watt	
Summary	5
Luminaire parts list	6
Photometric Results	7
Room Surfaces	
Floor	
Isolines (E)	8
Value Chart (E)	9
Bottle Store w Philips Luminaires	
Summary	10
Luminaire parts list	11
Photometric Results	12
Room Surfaces	
Floor	
Isolines (E)	13
Value Chart (E)	14

Light Design

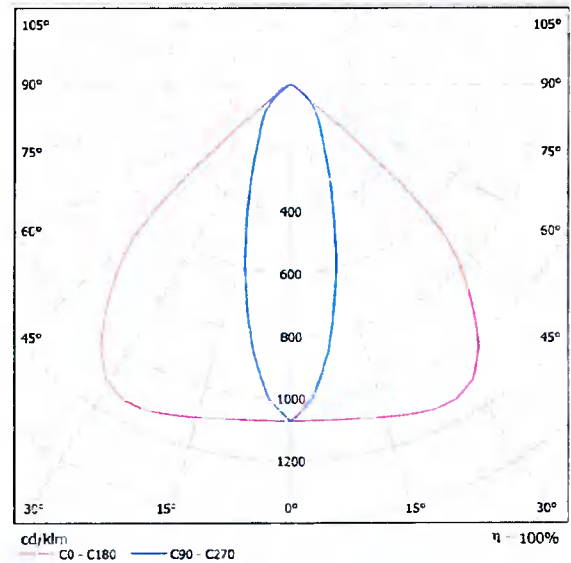
27 Canal Walk,
Parkwest Ind. Est., Dublin D12 D12W2.

Operator Paul Brennan
Telephone +353 (0)87 9074686
Fax
e-Mail paul@lightdesign.ie

PHILIPS BY471P HRO GC GRN250S/840 NO / Luminaire Data Sheet

Luminous emittance 1:

See our luminaire catalog for an image of the luminaire.



Luminaire classification according to CIE: 100
CIE flux code: 81 97 99 100 100

Due to missing symmetry properties, no UGR table can be displayed for this luminaire.

Bottle Store for Diageo 20200906



07.09.2020

Light Design

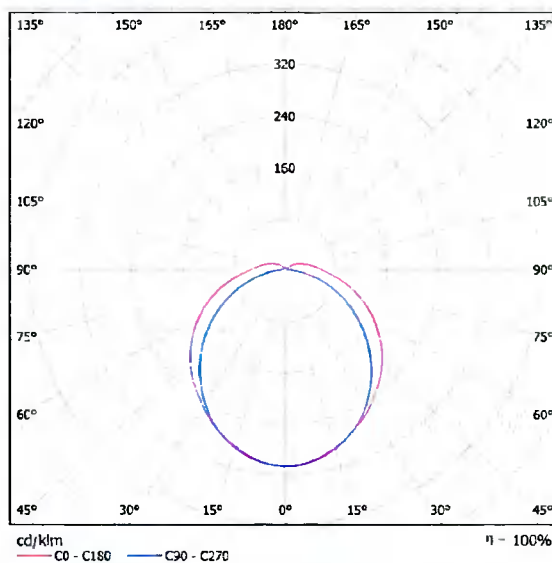
27 Canal Walk,
Parkwest Ind. Est., Dublin D12 D12W2.

Operator Paul Brennan
Telephone +353 (0)87 9074686
Fax
e-Mail paul@lightdesign.ie

TITAN 57w / Luminaire Data Sheet

See our luminaire catalog for an image of the luminaire.

Luminous emittance 1:



Luminaire classification according to CIE: 93
CIE flux code: 43 73 91 93 100

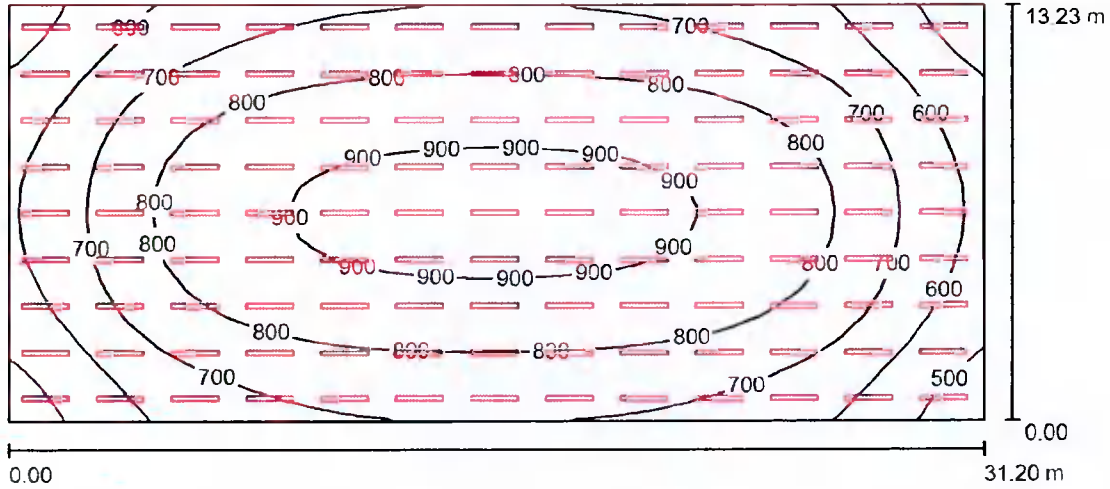
Due to missing symmetry properties, no UGR table can be displayed for this luminaire.

Light Design

27 Canal Walk,
Parkwest Ind. Est. Dublin D12 D12W2.

Operator Paul Brennan
Telephone +353 (0)87 9074686
Fax
e-Mail paul@lightdesign.ie

Bottle Store w Titan 57 Watt / Summary



Height of Room 7.500 m, Mounting Height: 7.500 m, Maintenance factor: 0.80

Values in Lux, Scale 1:224

Surface	ρ [%]	E_{av} [lx]	E_{min} [lx]	E_{max} [lx]	u_0
Workplane	/	753	449	933	0.596
Floor	15	752	438	931	0.582
Ceiling	30	251	139	672	0.552
Walls (4)	30	560	295	1175	/

Workplane:

Height: 0.000 m
Grid: 32 x 16 Points
Boundary Zone: 0.000 m

Illuminance Quotient (according to LG7): Walls / Working Plane: 0.745, Ceiling / Working Plane: 0.332.

Luminaire Parts List

No.	Pieces	Designation (Correction Factor)	Φ (Luminaire) [lm]	Φ (Lamps) [lm]	P [W]
1	117	TITAN 57w (1.000)	6409	6409	65.0
			Total: 749849	Total: 749876	7603.4

Specific connected load: $18.42 \text{ W/m}^2 = 2.45 \text{ W/m}^2/100 \text{ lx}$ (Ground area: 412.78 m^2)

Bottle Store for Diageo 20200906



07.09.2020

Light Design

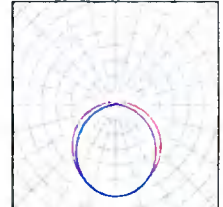
27 Canal Walk,
Parkwest Ind. Est.. Dublin D12 D12W2.

Operator Paul Brennan
Telephone +353 (0)87 9074686
Fax
e-Mail paul@lightdesign.ie

Bottle Store w Titan 57 Watt / Luminaire parts list

117 Pieces TITAN 57w
Article No.:
Luminous flux (Luminaire): 6409 lm
Luminous flux (Lamps): 6409 lm
Luminaire Wattage: 65.0 W
Luminaire classification according to CIE: 93
CIE flux code: 43 73 91 93 100
Fitting: 1 x User defined (Correction Factor
1.000).

See our luminaire
catalog for an image of
the luminaire.



Bottle Store for Diageo 20200906



07.09.2020

Light Design

27 Canal Walk,
Parkwest Ind. Est., Dublin D12 D12W2.

Operator Paul Brennan
Telephone +353 (0)87 9074686
Fax
e-Mail paul@lightdesign.ie

Bottle Store w Titan 57 Watt / Photometric Results

Total Luminous Flux: 749849 lm
Total Load: 7603.4 W
Maintenance factor: 0.80
Boundary Zone: 0.000 m

Surface	Average illuminances [lx]			Reflection factor [%]	Average luminance [cd/m ²]
	direct	indirect	total		
Workplane	635	118	753	/	/
Floor	634	118	752	15	36
Ceiling	104	147	251	30	24
Wall 1	474	118	591	30	56
Wall 2	360	116	477	30	46
Wall 3	470	118	588	30	56
Wall 4	381	119	500	30	48

Uniformity on the working plane

u₀: 0.596 (1:2)

E_{min} / E_{max}: 0.481 (1:2)

Illuminance Quotient (according to LG7): Walls / Working Plane: 0.745, Ceiling / Working Plane: 0.332.

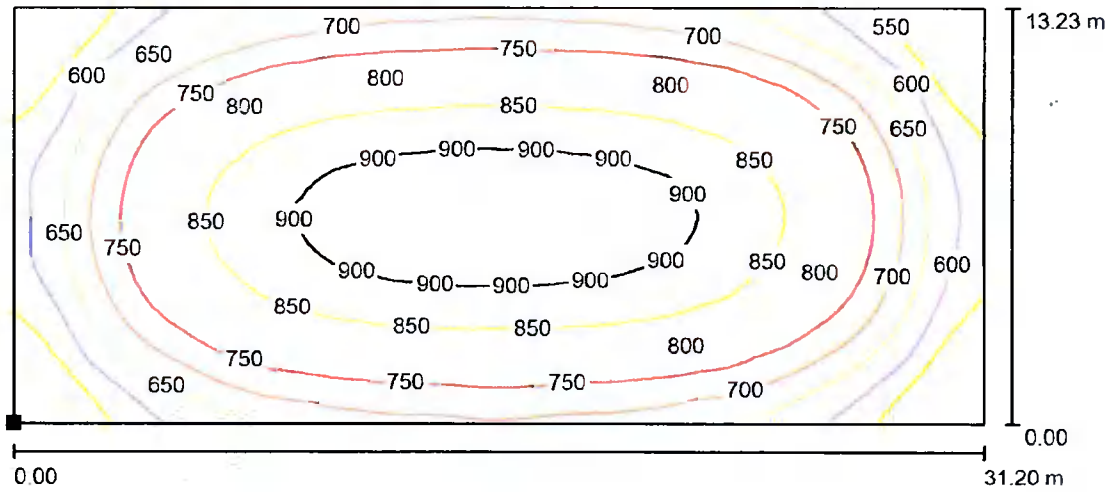
Specific connected load: 18.42 W/m² = 2.45 W/m²/100 lx (Ground area: 412.78 m²)

Light Design

27 Canal Walk,
Parkwest Ind. Est.. Dublin D12 D12W2.

Operator Paul Brennan
Telephone +353 (0)87 9074686
Fax
e-Mail paul@lightdesign.ie

Bottle Store w Titan 57 Watt / Floor / Isolines (E)



Values in Lux. Scale 1 : 224

Position of surface in room:
Marked point:
(0.000 m, 0.000 m, 0.000 m)



Grid: 64 x 32 Points

E_{av} [lx]
752

E_{min} [lx]
438

E_{max} [lx]
931

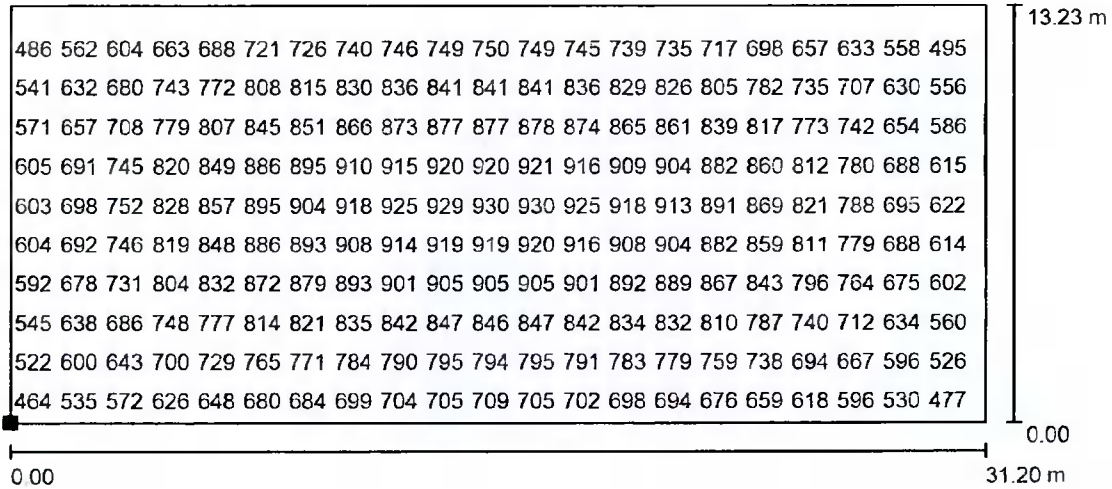
$u0$
0.582

E_{min} / E_{max}
0.471

Light Design
 27 Canal Walk,
 Parkwest Ind. Est., Dublin D12 D12W2.

Operator Paul Brennan
 Telephone +353 (0)87 9074686
 Fax
 e-Mail paul@lightdesign.ie

Bottle Store w Titan 57 Watt / Floor / Value Chart (E)



Values in Lux, Scale 1 : 224

Not all calculated values could be displayed.

Position of surface in room:
 Marked point:
 (0.000 m, 0.000 m, 0.000 m)



Grid: 64 x 32 Points

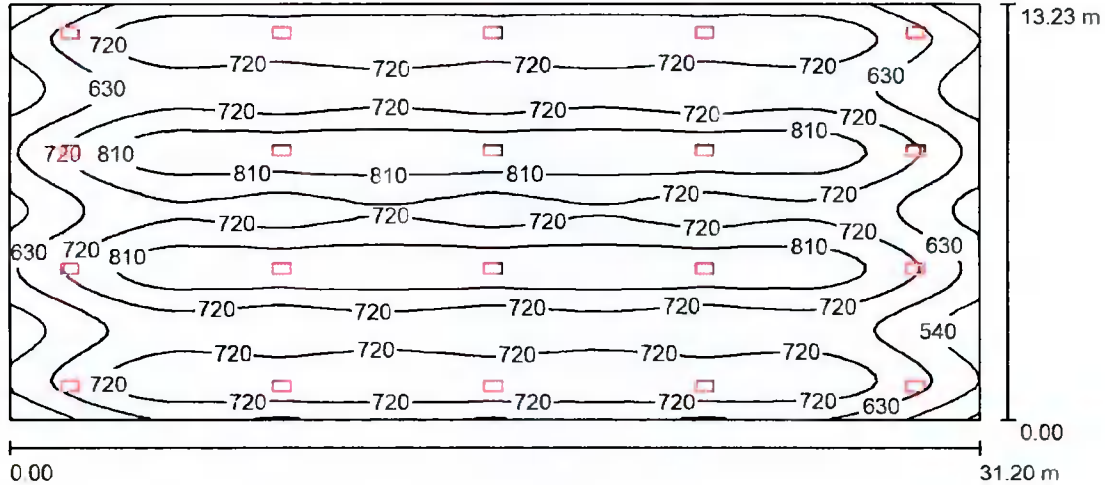
E_{av} [lx]	E_{min} [lx]	E_{max} [lx]	$u0$	E_{min} / E_{max}
752	438	931	0.582	0.471

Light Design

27 Canal Walk,
Parkwest Ind. Est., Dublin D12 D12W2.

Operator Paul Brennan
Telephone +353 (0)87 9074686
Fax
e-Mail paul@lightdesign.ie

Bottle Store w Philips Luminaires / Summary



Height of Room: 7.500 m, Mounting Height: 7.500 m, Maintenance factor: 0.80

Values in Lux. Scale 1:224

Surface	ρ [%]	E_{av} [lx]	E_{min} [lx]	E_{max} [lx]	$u0$
Workplane	/	723	438	880	0.605
Floor	15	723	433	879	0.599
Ceiling	30	91	65	112	0.712
Walls (4)	30	254	55	1409	/

Workplane:

Height: 0.000 m
Grid: 128 x 64 Points
Boundary Zone: 0.000 m

Illuminance Quotient (according to LG7): Walls / Working Plane: 0.353, Ceiling / Working Plane: 0.126.

Luminaire Parts List

No.	Pieces	Designation (Correction Factor)	Φ (Luminaire) [lm]	Φ (Lamps) [lm]	P [W]
1	20	PHILIPS BY471P HRO GC GRN250S/840 NO (1.000)	24920	25000	164.0
Total:			498406	500000	3280.0

Specific connected load: $7.95 \text{ W/m}^2 = 1.10 \text{ W/m}^2/100 \text{ lx}$ (Ground area: 412.78 m^2)

Bottle Store for Diageo 20200906



07.09.2020

Light Design

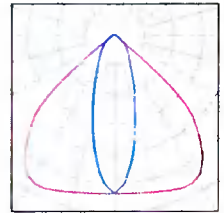
27 Canal Walk,
Parkwest Ind. Est., Dublin D12 D12W2.

Operator Paul Brennan
Telephone +353 (0)87 9074686
Fax
e-Mail paul@lightdesign.ie

Bottle Store w Philips Luminaires / Luminaire parts list

20 Pieces PHILIPS BY471P HRO GC GRN250S/840 NO
Article No.:
Luminous flux (Luminaire): 24920 lm
Luminous flux (Lamps): 25000 lm
Luminaire Wattage: 164.0 W
Luminaire classification according to CIE: 100
CIE flux code: 81 97 99 100 100
Fitting: 1 x GRN250S/840 (Correction Factor
1.000).

See our luminaire
catalog for an image of
the luminaire.



Light Design

27 Canal Walk
Parkwest Ind. Est., Dublin D12 D12W2.

Operator Paul Brennan
Telephone +353 (0)87 9074686
Fax
e-Mail paul@lightdesign.ie

Bottle Store w Philips Luminaires / Photometric Results

Total Luminous Flux: 498406 lm
Total Load: 3280.0 W
Maintenance factor: 0.80
Boundary Zone: 0.000 m

Surface	Average illuminances [lx]			Reflection factor [%]	Average luminance [cd/m ²]
	direct	indirect	total		
Workplane	671	52	723	/	/
Floor	671	52	723	15	35
Ceiling	0.00	91	91	30	8.67
Wall 1	149	72	222	30	21
Wall 2	239	67	306	30	29
Wall 3	164	72	236	30	23
Wall 4	254	68	322	30	31

Uniformity on the working plane

u₀: 0.605 (1:2)

E_{min} / E_{max}: 0.497 (1:2)

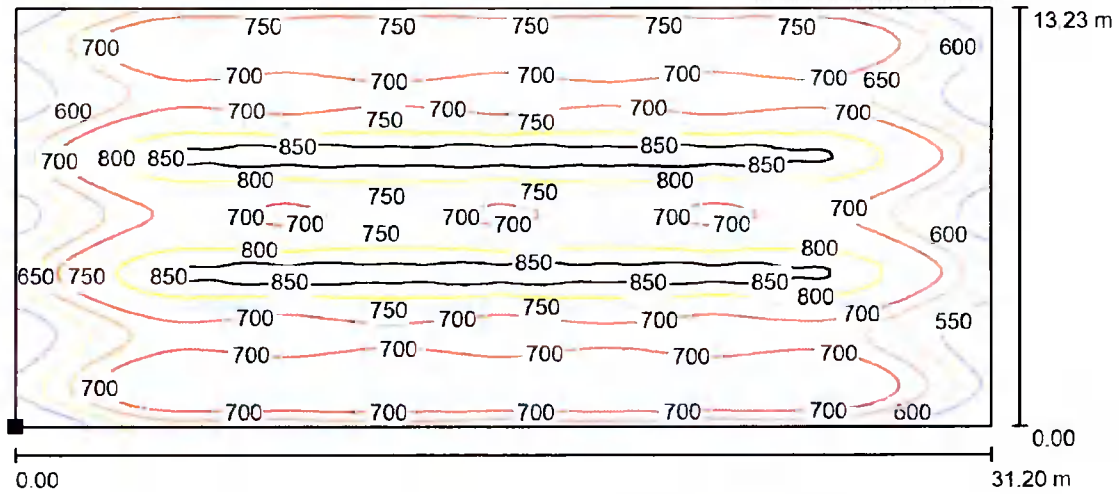
Illuminance Quotient (according to LG7): Walls / Working Plane: 0.353, Ceiling / Working Plane: 0.126.

Specific connected load: 7.95 W/m² = 1.10 W/m²/100 lx (Ground area: 412.78 m²)

Light Design
 27 Canal Walk,
 Parkwest Ind. Est., Dublin D12 D12W2.

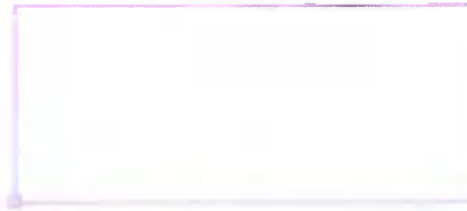
Operator Paul Brennan
 Telephone +353 (0)87 9074686
 Fax
 e-Mail paul@lightdesign.ie

Bottle Store w Philips Luminaires / Floor / Isolines (E)



Values in Lux, Scale 1 : 224

Position of surface in room:
 Marked point:
 (0.000 m, 0.000 m, 0.000 m)



Grid: 128 x 64 Points

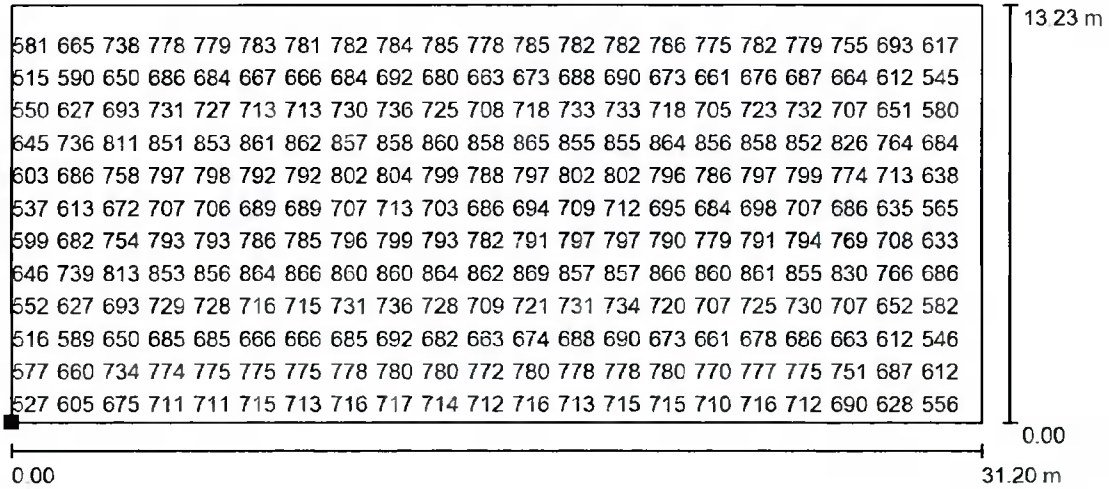
E_{av} [lx]	E_{min} [lx]	E_{max} [lx]	$u0$	E_{min} / E_{max}
723	433	879	0.599	0.493

Light Design

27 Canal Walk
Parkwest Ind. Est., Dublin D12 D12W2.

Operator Paul Brennan
Telephone +353 (0)87 9074686
Fax
e-Mail paul@lightdesign.ie

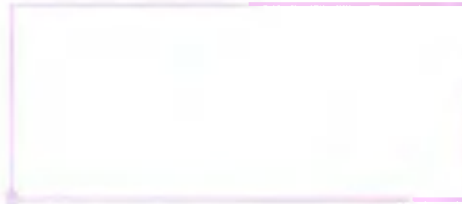
Bottle Store w Philips Luminaires / Floor / Value Chart (E)



Values in Lux. Scale 1 : 224

Not all calculated values could be displayed.

Position of surface in room:
Marked point:
(0.000 m, 0.000 m, 0.000 m)



Grid: 128 x 64 Points

E_{av} [lx]	E_{min} [lx]	E_{max} [lx]	u_0	E_{min} / E_{max}
723	433	879	0.599	0.493