

DATE: 12 October 2021
DESIGNER: Tom Jones
PROJECT No: H618
PROJECT NAME: Adamstown Block G

**LIGHTING
REALITY**

Public Lighting Report

Layout Report

General Data

Dimensions In Metres Angles in Degrees
Grid Origin 700234.0m x 741007.0m
Area 172.0m x 174.5m
Sample Spacing 6.88m x 6.98m

Luminaires

Luminaire A Data

Supplier	
Type	XSP1E - H - Type 3SH - 63W 4K
Lamp(s)	5MDSA1400 4K 63W
LampFlux(klm)/Colour	8.77 4000/70
File Name	XSP1E023SH40K_63W-PL11703-030.LDT
Maintenance Factor	0.85
Imax70,80,90(cd/klm)	312.4 178.4 0.0
No. in Project	12

Luminaire B Data

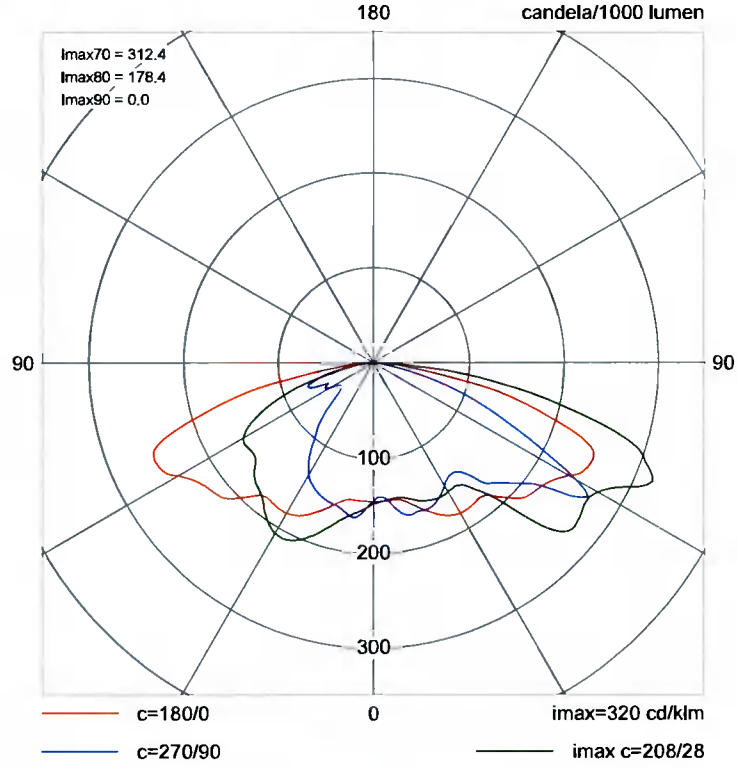
Supplier	
Type	XSP1E -E- Type 3SH - VM 94W 4K
Lamp(s)	5 MDSA1400 94W 4K
LampFlux(klm)/Colour	12.35 4000/70
File Name	XSP1E023SHE40K_94W-PL11703-030.LDT
Maintenance Factor	0.85
Imax70,80,90(cd/klm)	312.4 178.4 0.0
No. in Project	5

Layout

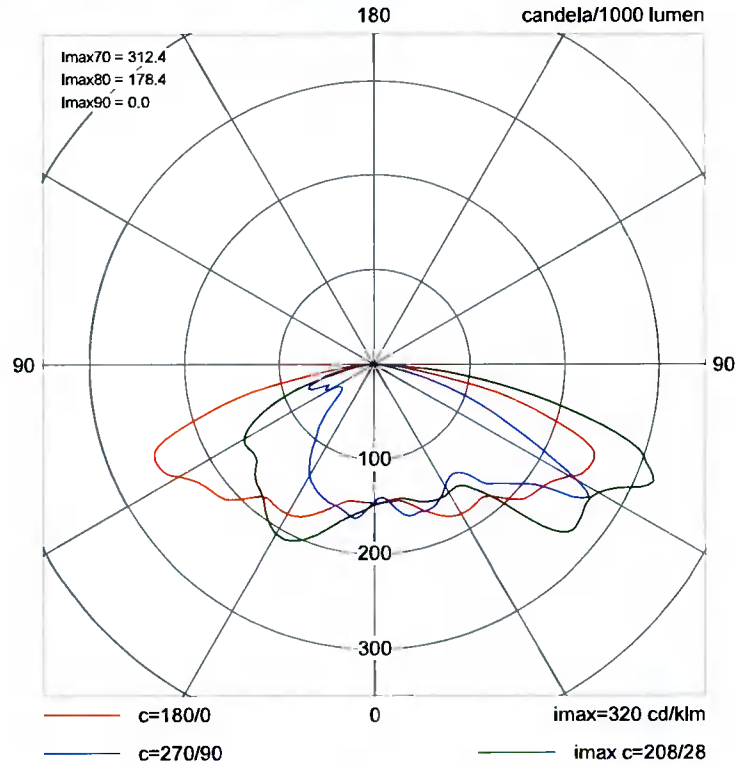
ID	Type	X	Y	Height	Angle	Tilt	Cant	Out-reach	Target	Target	Target
									X	Y	Z
1	A	700288.83	741155.89	6.00	156.00	0.00	0.00	1.00			
2	A	700282.06	741117.85	6.00	180.00	0.00	0.00	1.00			
3	A	700279.70	741082.56	6.00	178.00	0.00	0.00	1.00			
4	A	700276.61	741036.14	6.00	182.00	0.00	0.00	1.00			
5	A	700294.10	741046.51	6.00	270.00	0.00	0.00	1.00			
6	A	700308.79	741035.10	6.00	91.00	0.00	0.00	1.00			
7	A	700346.94	741034.20	6.00	0.00	0.00	0.00	1.00			
8	A	700350.37	741104.16	6.00	0.00	0.00	0.00	1.00			
9	A	700348.85	741073.72	6.00	0.00	0.00	0.00	1.00			
10	A	700349.17	741127.33	6.00	9.00	0.00	0.00	1.00			
11	B	700317.90	741140.78	8.00	58.00	0.00	0.00	1.00			
12	B	700298.72	741151.69	8.00	61.00	0.00	0.00	1.00			
13	A	700278.21	741052.72	6.00	173.00	0.00	0.00	1.00			
14	B	700260.36	741013.97	8.00	87.00	0.00	0.00	1.00			
15	B	700290.85	741012.46	8.00	87.00	0.00	0.00	1.00			
16	B	700318.72	741010.94	8.00	86.00	0.00	0.00	1.00			
17	A	700330.11	741122.70	6.00	90.00	0.00	0.00	1.00			

Polar Diagrams

Luminaire A XSP1E - H - Type 3SH - 63W 4K

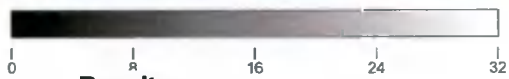
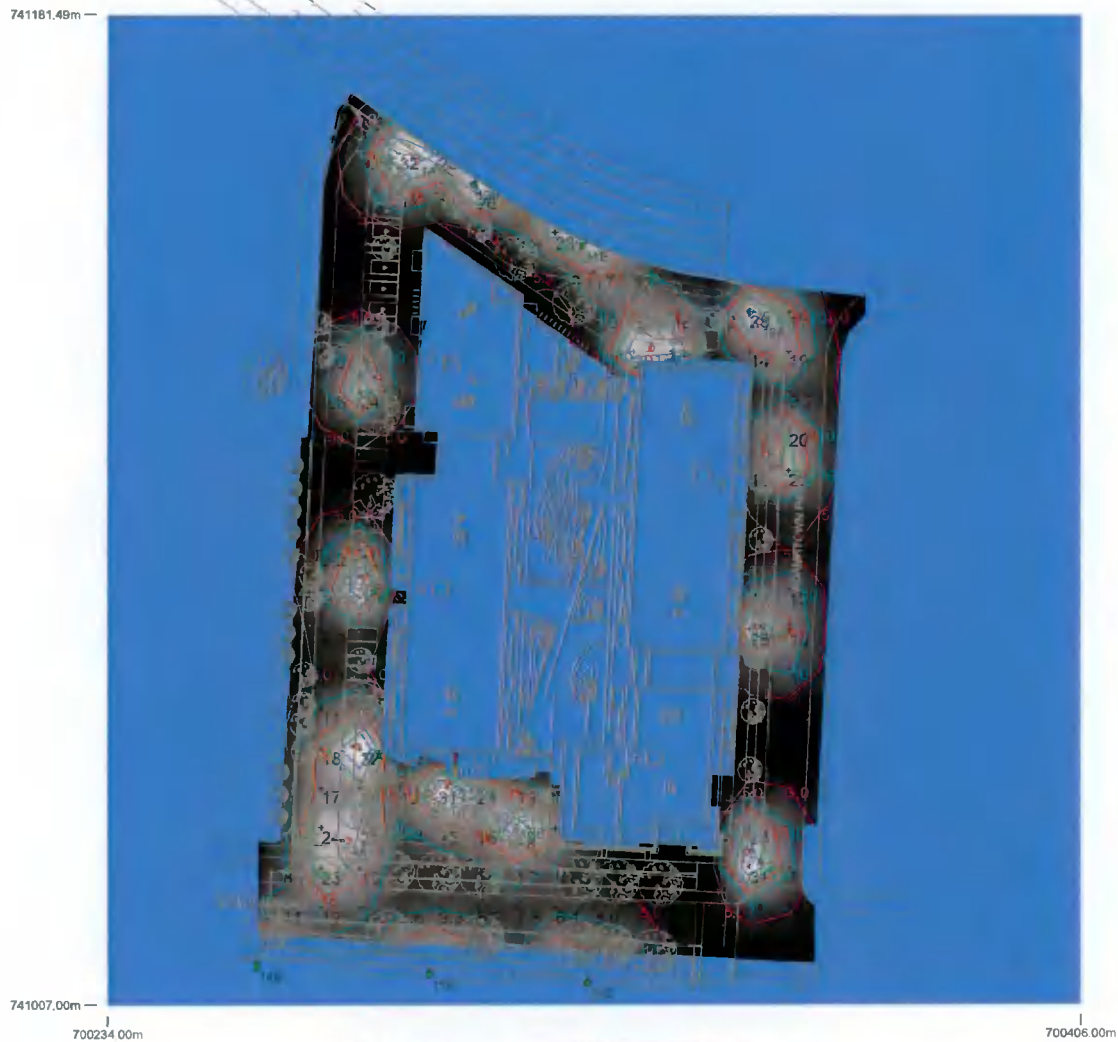


Luminaire B XSP1E -E- Type 3SH - VM 94W 4K



Horizontal Illuminance (lux)

Grid 1



Results

Eav	10.69
Emin	1.50
Emax	32.17
Emin/Emax	0.05
Emin/Eav	0.14