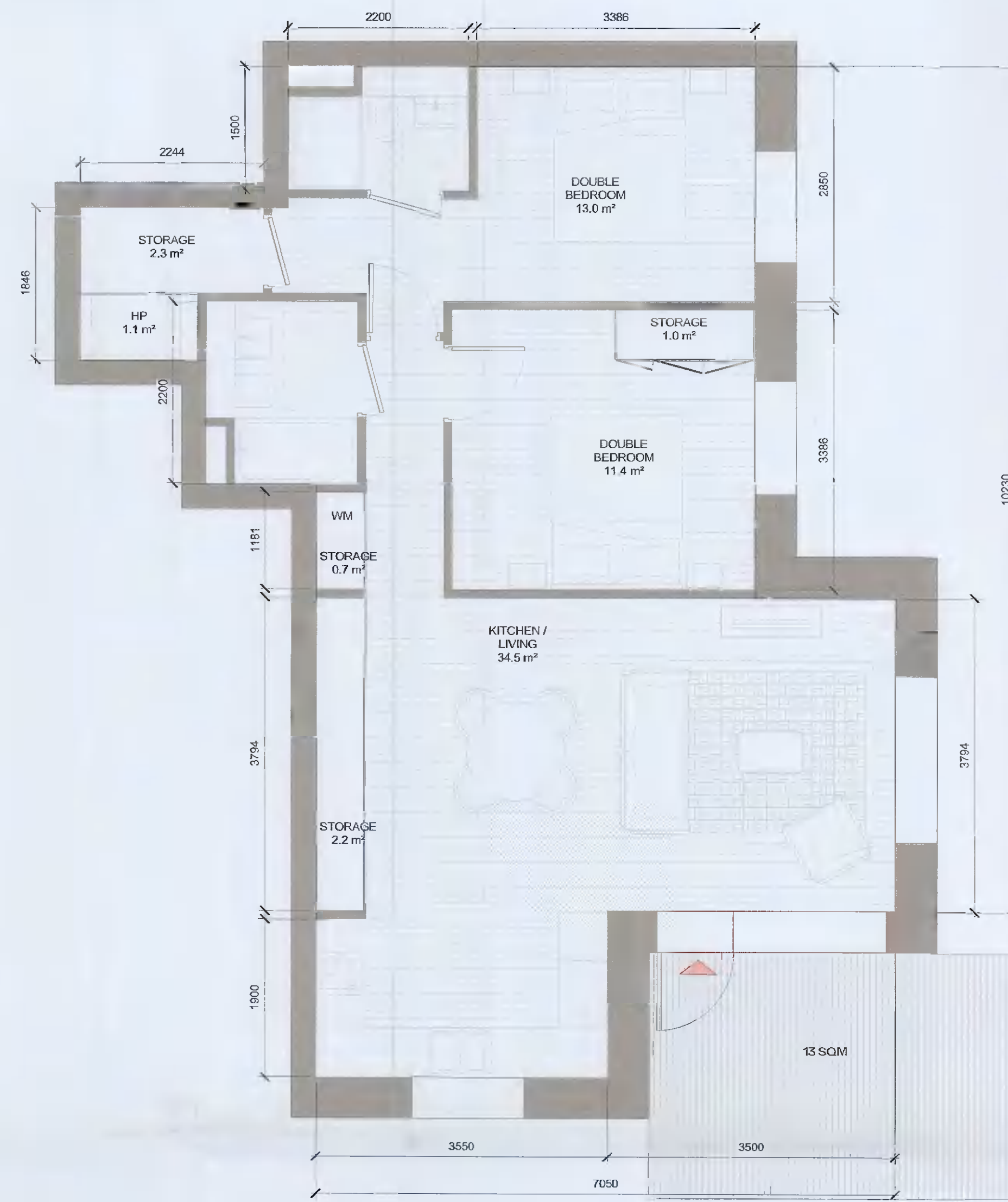


ALL DIMENSIONS TO BE CHECKED ON SITE
NO DIMENSIONS TO BE SCALED FROM THIS DRAWING
DRAWING IS TO BE READ IN CONJUNCTION WITH RELEVANT CONSULTANTS DRAWINGS



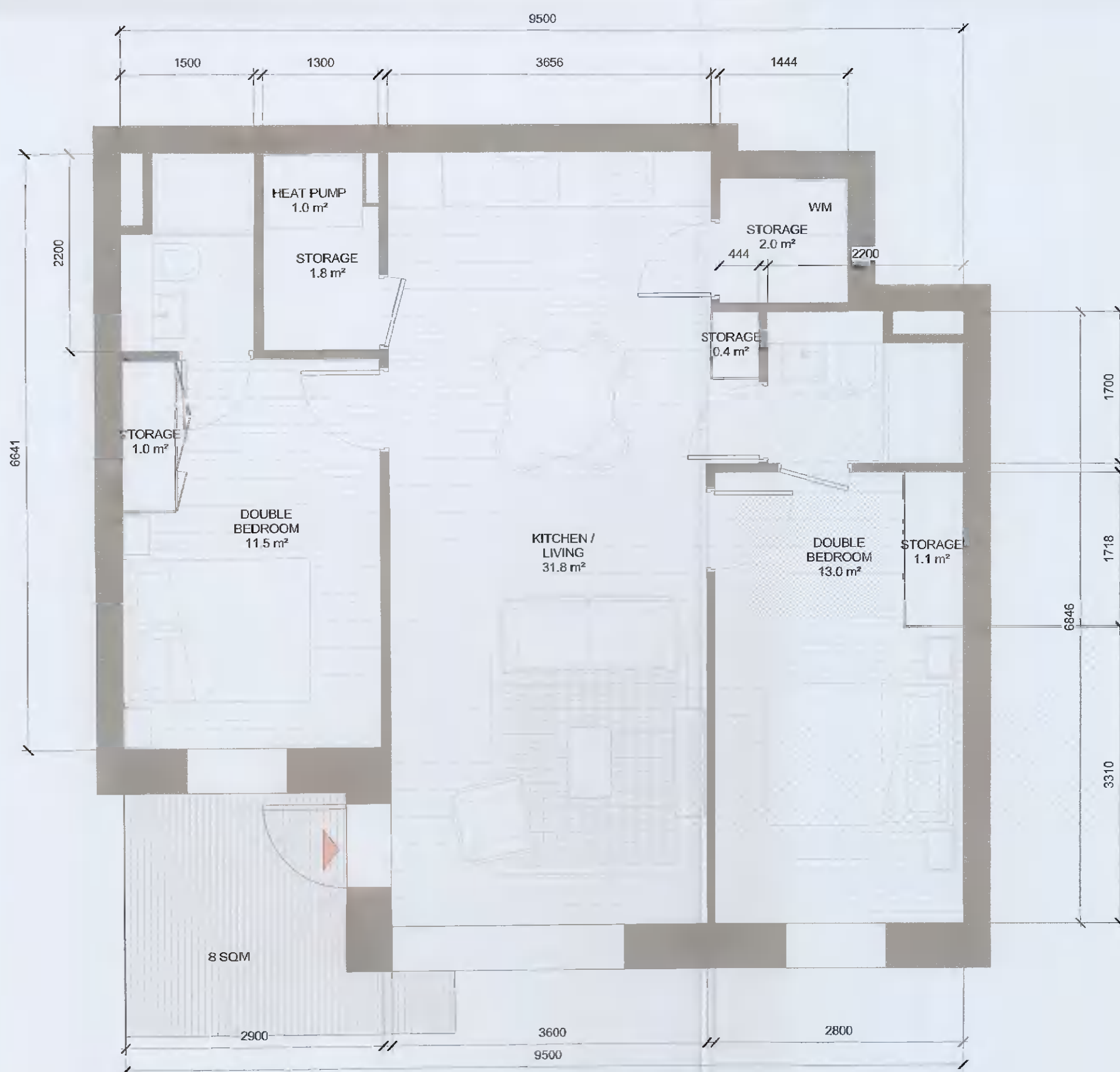
1 T.221_GF
1:50

T.221_GF SPACE REQUIREMENTS											
Apartment Area	Required Apartment Area	Required Area Met	Kitchen - Living Area	Required Kitchen - Living Area	Required Area Met	Total Bedroom Area	Required Total Bedroom Area	Required Area Met	Total Storage Area	Required Total Storage Area	Heat Pump Area
74.1 m²	73.0 m²	Yes	32.0 m²	30.0 m²	Yes	24.5 m²	24.4 m²	Yes	6.3 m²	6.0 m²	Yes 0.9 m²



2 T.223_GF
1:50

T.223_GF SPACE REQUIREMENTS											
Apartment Area	Required Apartment Area	Required Area Met	Kitchen - Living Area	Required Kitchen - Living Area	Required Area Met	Total Bedroom Area	Required Total Bedroom Area	Required Area Met	Total Storage Area	Required Total Storage Area	Heat Pump Area
76.1 m²	73.0 m²	Yes	34.5 m²	30.0 m²	Yes	24.4 m²	24.4 m²	Yes	6.2 m²	6.0 m²	Yes 1.1 m²



3 T.224_GF
1:50

T.224_GF SPACE REQUIREMENTS											
Apartment Area	Required Apartment Area	Required Area Met	Kitchen - Living Area	Required Kitchen - Living Area	Required Area Met	Total Bedroom Area	Required Total Bedroom Area	Required Area Met	Total Storage Area	Required Total Storage Area	Heat Pump Area
73.6 m²	73.0 m²	Yes	31.8 m²	30.0 m²	Yes	24.5 m²	24.4 m²	Yes	6.3 m²	6.0 m²	Yes 1.1 m²

APARTMENT TYPE SUMMARY						
Count	APARTMENT TYPE		DESCRIPTION		APARTMENT AREA	
	Type Name	Unit Type	Aspect	Orientation	Area sqm	Min. Area
38	T.101A	1B-2P	SINGLE	W	50.7	45.0
8	T.102A	1B-2P	SINGLE	W	48.7	45.0
22	T.103A	1B-2P	DUAL	N/E	48.0	45.0
1	T.104A	1B-2P	DUAL	N/E	54.6	45.0
5	T.105_GF	1B-2P	SINGLE	E	51.0	45.0
2	T.106_SB	1B-2P	SINGLE	E	46.7	45.0
1	T.107A	1B-2P	SINGLE	W	49.5	45.0
1	T.108_SB	1B-2P	DUAL	N/E	49.6	45.0
3	T.109_GF	1B-2P	SINGLE	E	48.4	45.0
1	T.110_CF	1B-2P	DUAL	N/W	50.8	45.0
1:82						
9	T.201A	2B-3P	SINGLE	W	63.9	63.0
24	T.202A	2B-4P	SINGLE	E	80.3	73.0
3	T.203A	2B-4P	DUAL	E/W	81.0	73.0
5	T.204A	2B-4P	SINGLE	E	74.6	73.0
12	T.205A	2B-4P	SINGLE	E	76.0	73.0
3	T.206A	2B-4P	DUAL	E/W	80.7	73.0
2	T.207A	2B-3P	SINGLE	E	68.0	63.0
8	T.208A	2B-4P	DUAL	N/W	80.3	73.0
5	T.209A	2B-4P	DUAL	S/E	80.3	73.0
6	T.210A	2B-3P	DUAL	S/E	64.5	63.0
5	T.211A	2B-4P	DUAL	S/E	75.5	73.0
3	T.212A	2B-4P	DUAL	N/W	80.9	73.0
3	T.213A	2B-4P	DUAL	N/E	74.3	73.0
3	T.214A	2B-4P	SINGLE	S	76.3	73.0
2	T.215A	2B-4P	DUAL	S/W	81.6	73.0
5	T.220_GF	2B-4P	DUAL	S/W	73.0	73.0
1	T.221_CF	2B-4P	DUAL	S/W	74.1	73.0
1	T.223_CF	2B-4P	DUAL	S/E	76.1	73.0
1	T.224A	2B-4P	SINGLE	S	73.6	73.0
1	T.225_GF	2B-3P	DUAL	S/W	63.6	63.0
1	T.226_SB	2B-4P	SINGLE	E	78.6	73.0
1	T.227_SB	2B-3P	DUAL	N/E	70.8	63.0
2:102						
1	T.301_SB	SB-3P	DUAL	S/E	99.7	90.0
3:1						
Grand total: 185						

AS PERMITTED UNDER
REG. REF. SDZ21A/0007

REV	DATE	DESCRIPTION	CHK	DRN
P01	13/04/2021	ISSUED FOR PLANNING APPROVAL	RU	EA

STATUS CODE DESCRIPTION
ISSUED FOR PLANNING APPROVAL

CLIENT
QUINTAIN IRELAND LTD.

PROJECT
ADAMSTOWN STATION BLOCK G

DRAWING
2 BED APARTMENT TYPES SHEET 5

PROJECT NUMBER: 950/49
DATE: 13/04/21

SCALE@ A1: 1:50
DRAWN/CHECKED: RU/DB

STATUS CODE: A1
DRAWING NUMBER: ADC-HUL-G-ZZ-DR-A-8007
REVISION: P01

Henry J Lyons

Architecture + interiors
henryjlyons.com
+353 1 888 3333
info@henryjlyons.com
51-54 Pearse Street
Dublin D02 KA66