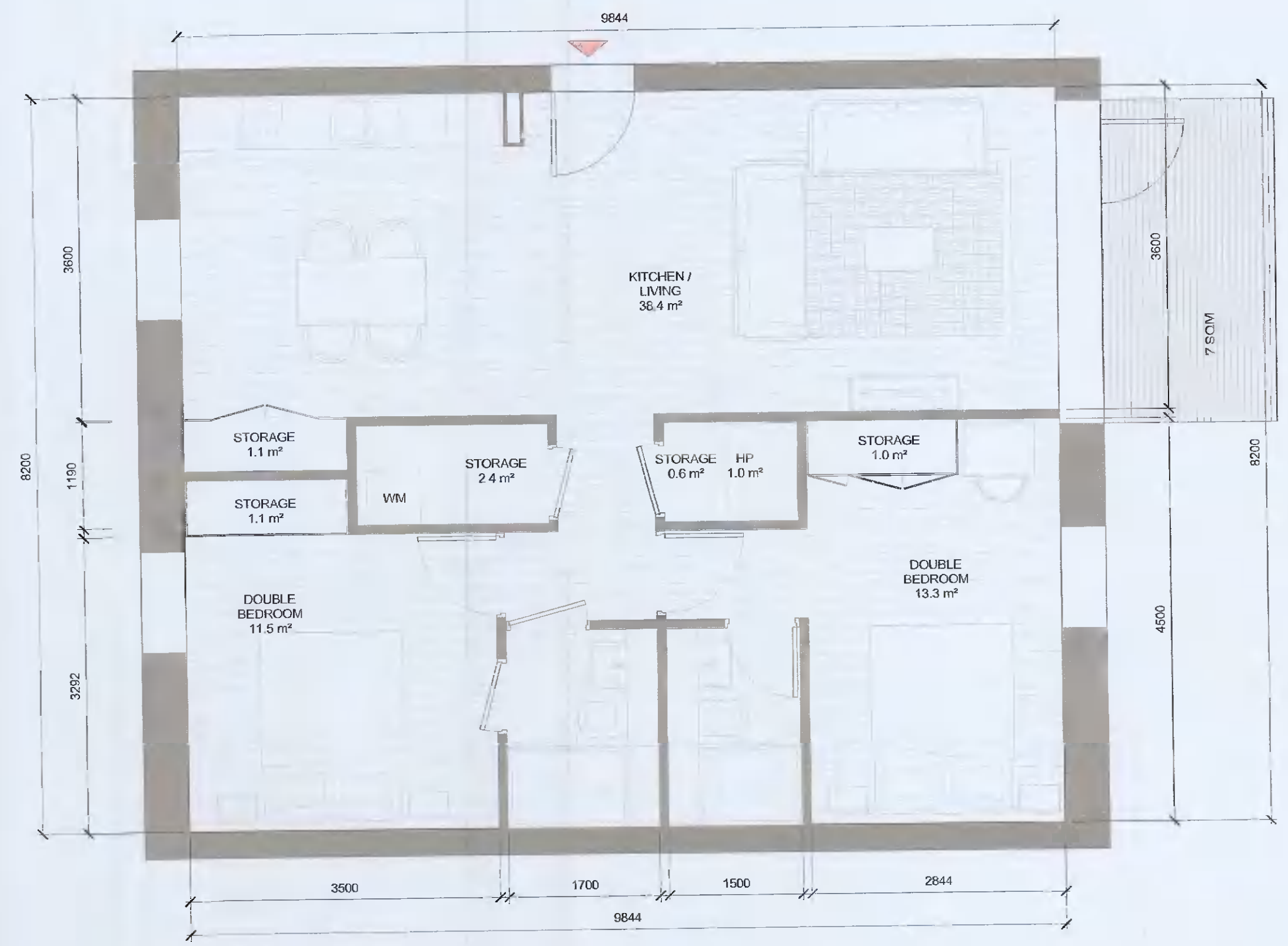


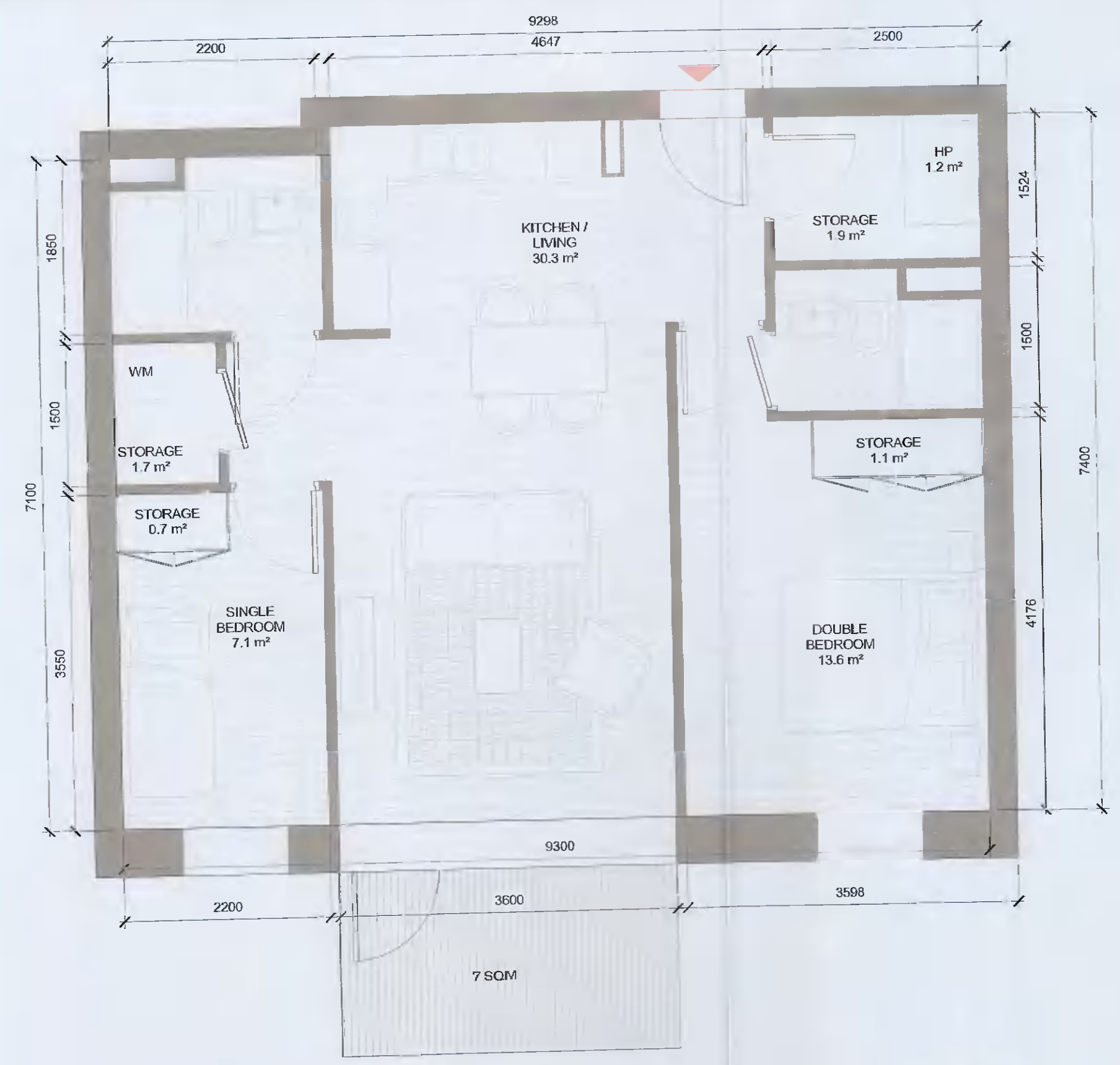
1 T.205_A
1:50

T.205_A SPACE REQUIREMENTS											
Apartment Area	Required Apartment Area	Required Area Met	Kitchen - Living Area	Required Kitchen - Living Area	Required Area Met	Total Bedroom Area	Required Total Bedroom Area	Required Area Met	Total Storage Area	Required Total Storage Area	Heat Pump Area
76.0 m ²	73.0 m ²	Yes	30.6 m ²	30.0 m ²	Yes	24.5 m ²	24.4 m ²	Yes	6.0 m ²	6.0 m ²	Yes 1.1 m ²



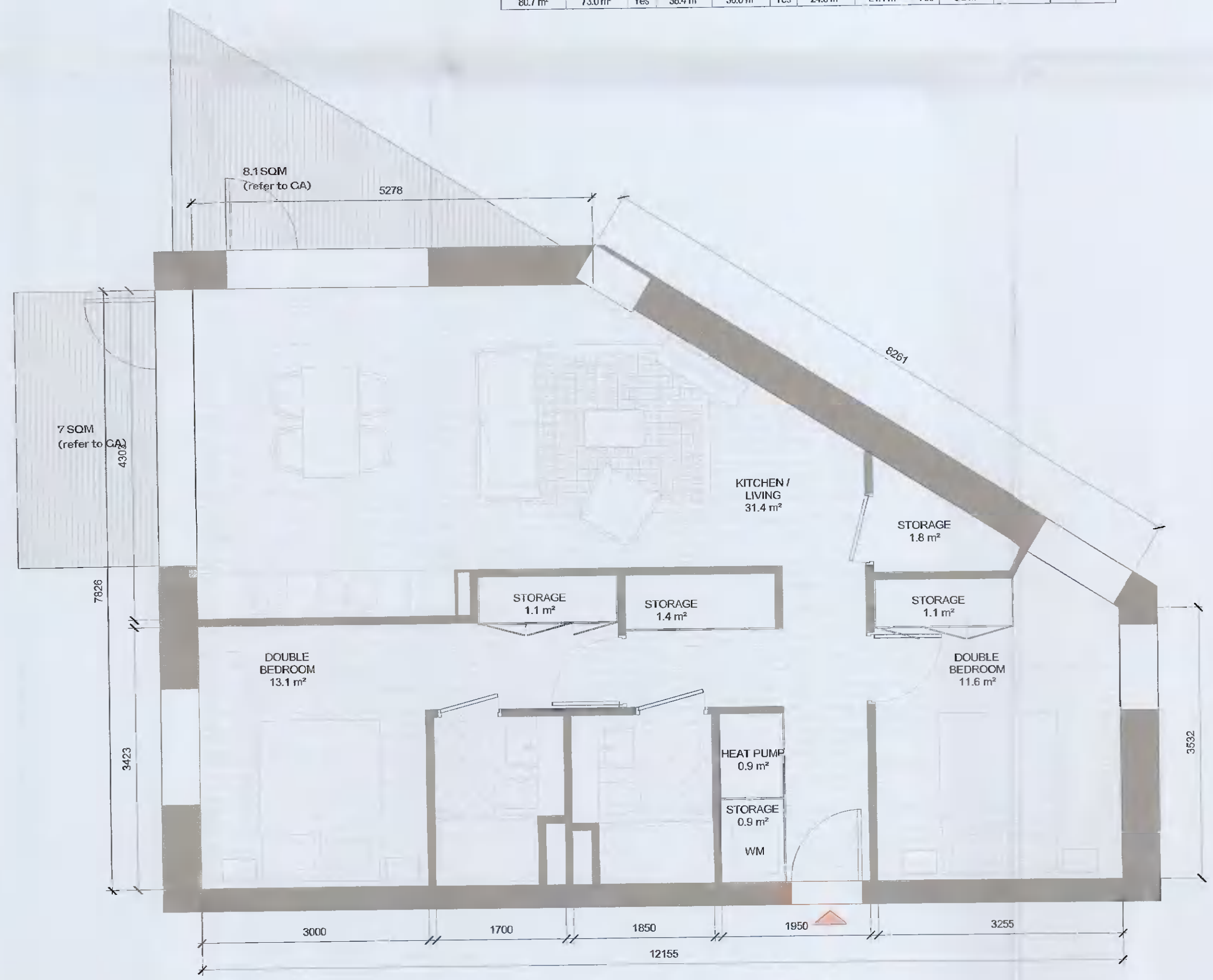
2 T.206_A
1:50

T.206_A SPACE REQUIREMENTS											
Apartment Area	Required Apartment Area	Required Area Met	Kitchen - Living Area	Required Kitchen - Living Area	Required Area Met	Total Bedroom Area	Required Total Bedroom Area	Required Area Met	Total Storage Area	Required Total Storage Area	Heat Pump Area
80.7 m ²	73.0 m ²	Yes	38.4 m ²	30.0 m ²	Yes	24.8 m ²	24.4 m ²	Yes	6.2 m ²	6.0 m ²	Yes 1.0 m ²



3 T.207_A
1:50

T.207_A SPACE REQUIREMENTS											
Apartment Area	Required Apartment Area	Required Area Met	Kitchen - Living Area	Required Kitchen - Living Area	Required Area Met	Total Bedroom Area	Required Total Bedroom Area	Required Area Met	Total Storage Area	Required Total Storage Area	Heat Pump Area
63.0 m ²	63.0 m ²	Yes	30.3 m ²	26.0 m ²	Yes	20.7 m ²	20.7 m ²	Yes	5.4 m ²	5.0 m ²	Yes 1.2 m ²



4 T.208_A
1:50

T.208_A SPACE REQUIREMENTS											
Apartment Area	Required Apartment Area	Required Area Met	Kitchen - Living Area	Required Kitchen - Living Area	Required Area Met	Total Bedroom Area	Required Total Bedroom Area	Required Area Met	Total Storage Area	Required Total Storage Area	Heat Pump Area
80.3 m ²	73.0 m ²	Yes	31.4 m ²	30.0 m ²	Yes	24.7 m ²	24.4 m ²	Yes	6.3 m ²	6.0 m ²	Yes 0.9 m ²

APARTMENT TYPE SUMMARY						
Count	Apartment Type	Unit Type	Description	Orientation	Apartment Area	
					Area sqm	Min. Area
38	T.101_A	1B-2P	SINGLE	W	50.7	45.0
8	T.102_A	1B-2P	SINGLE	W	48.7	45.0
22	T.103_A	1B-2P	SINGLE	E	48.0	45.0
1	T.104_A	1B-2P	DUAL	N/E	54.6	45.0
5	T.105_CF	1B-2P	SINGLE	E	51.0	45.0
2	T.106_SB	1B-2P	SINGLE	E	46.7	45.0
1	T.107_A	1B-2P	SINGLE	W	49.5	45.0
1	T.108_SB	1B-2P	DUAL	N/E	49.6	45.0
3	T.109_CF	1B-2P	SINGLE	E	48.4	45.0
1	T.110_CF	1B-2P	DUAL	N/W	50.8	45.0
1-82						
9	T.201_A	2B-3P	SINGLE	W	63.9	63.0
24	T.202_A	2B-4P	DUAL	E/W	80.3	73.0
3	T.203_A	2B-4P	DUAL	E/W	81.0	73.0
5	T.204_A	2B-4P	SINGLE	E	74.6	73.0
12	T.205_A	2B-4P	DUAL	E	76.0	73.0
3	T.206_A	2B-4P	DUAL	E/W	80.7	73.0
2	T.207_A	2B-3P	SINGLE	E	66.0	63.0
8	T.208_A	2B-4P	DUAL	N/W	80.3	73.0
1	T.209_A	2B-4P	DUAL	S/E	80.5	73.0
6	T.210_A	2B-3P	DUAL	E	64.5	63.0
5	T.211_A	2B-4P	DUAL	S/E	75.5	73.0
3	T.212_A	2B-4P	DUAL	N/W	80.9	73.0
3	T.213_A	2B-4P	DUAL	N/E	74.3	73.0
3	T.214_A	2B-4P	SINGLE	S	74.3	73.0
2	T.215_A	2B-4P	DUAL	S/W	81.6	73.0
3	T.220_CF	2B-4P	DUAL	S/W	73.0	73.0
1	T.221_CF	2B-4P	DUAL	S/W	74.1	73.0
1	T.223_CF	2B-4P	DUAL	S/E	76.1	73.0
1	T.224_CF	2B-4P	SINGLE	S	73.6	73.0
1	T.225_CF	2B-3P	DUAL	S/W	63.6	63.0
1	T.226_SB	2B-4P	SINGLE	E	78.6	73.0
1	T.227_SB	2B-3P	DUAL	N/E	70.8	63.0
2-102						
1	T.301_SB	3B-5P	DUAL	S/E	199.7	90.0
3-1						
Grand total: 185						

AS PERMITTED UNDER
REG. REF. SD221A/0007

REV	DATE	DESCRIPTION	BY	EA
P01	13/04/2021	ISSUED FOR PLANNING APPROVAL	RJ	EA
REV			CKH	DRN

ISSUED FOR PLANNING APPROVAL

CLIENT
QUINTAIN IRELAND LTD.

PROJECT
ADAMSTOWN STATION BLOCK G

DRAWING
2 BED APARTMENT TYPES SHEET 2

PROJECT NUMBER
950749

DATE
13/04/21

SCALE@ A1:
1:50

DRAWING CHECKED:
RL/DB

STATUS CODE: A1

DRAWING NUMBER: ADC-HJL-G-ZZ-DR-A-8004

REVISION: P01

Henry J Lyons

Architecture • Interiors
henryjlyons.com

+353 1 888 3333
info@henryjlyons.com

51-54 Pearse Street
Dublin D02 K466