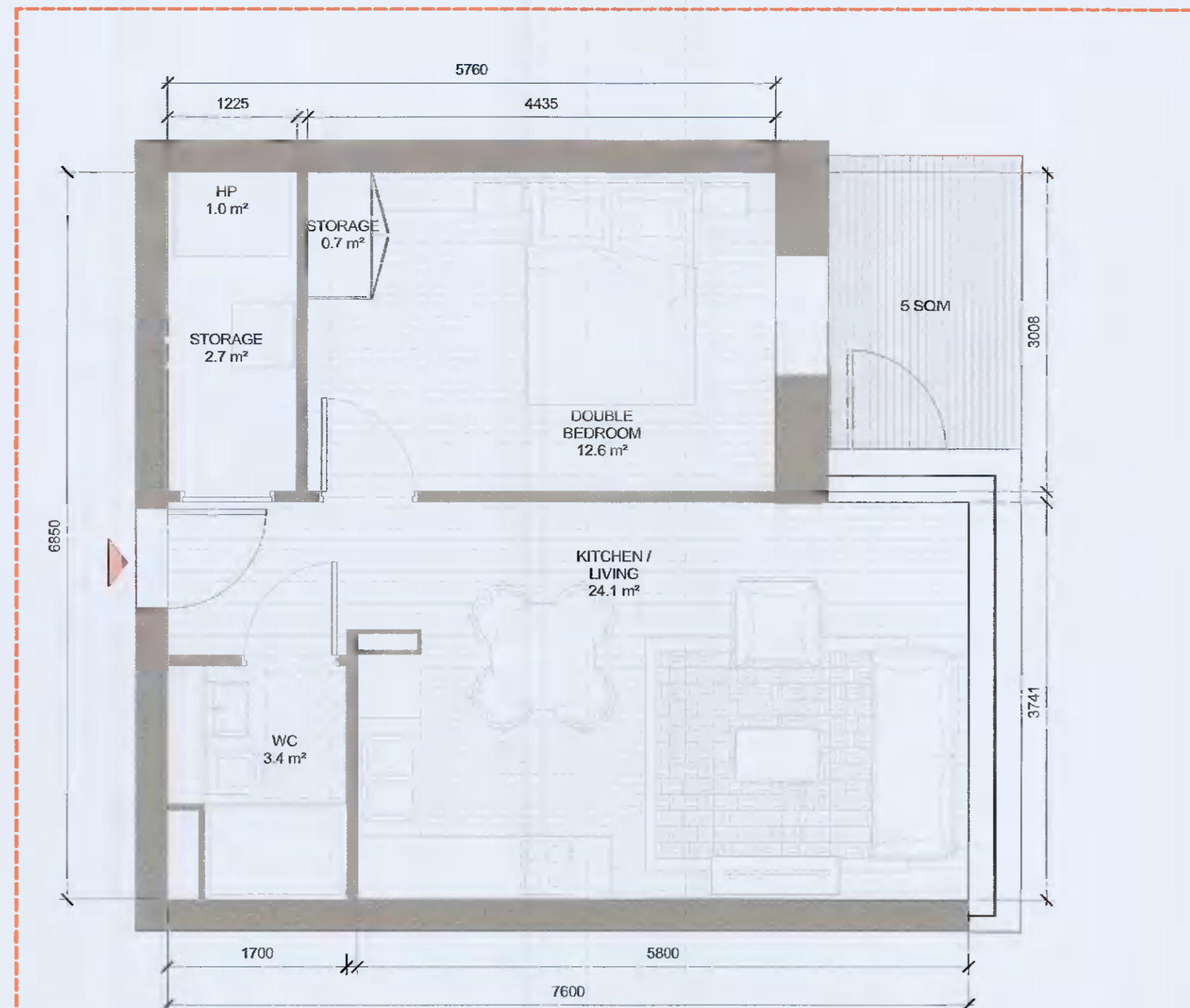




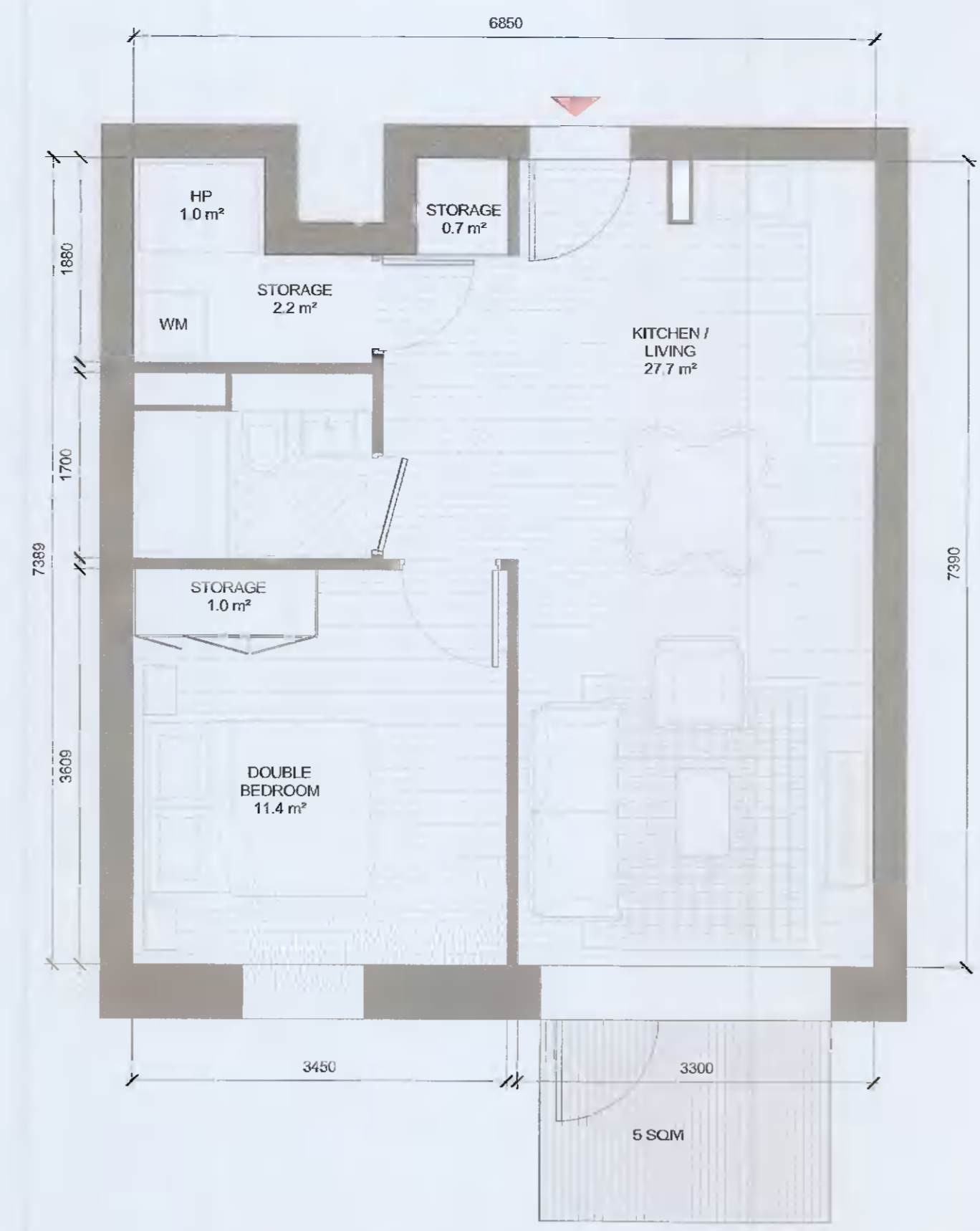
1 T.105\_GF  
1:50

T.105_GF SPACE REQUIREMENTS												
Apartment Area	Required Apartment Area	Required Area Met	Kitchen-Living Area	Required Kitchen-Living Area	Required Area Met	Total Bedroom Area	Required Total Bedroom Area	Required Area Met	Total Storage Area	Required Total Storage Area	Heat Pump Area	
51.0 m²	45.0 m²	Yes	27.0 m²	23.0 m²	Yes	13.9 m²	11.4 m²	Yes	4.0 m²	3.0 m²	Yes	0.7 m²



2 T.106\_SB  
1:50

T.106_SB SPACE REQUIREMENTS												
Apartment Area	Required Apartment Area	Required Area Met	Kitchen-Living Area	Required Kitchen-Living Area	Required Area Met	Total Bedroom Area	Required Total Bedroom Area	Required Area Met	Total Storage Area	Required Total Storage Area	Heat Pump Area	
46.3 m²	45.0 m²	Yes	24.1 m²	23.0 m²	Yes	12.6 m²	11.4 m²	Yes	3.4 m²	3.0 m²	Yes	1.0 m²

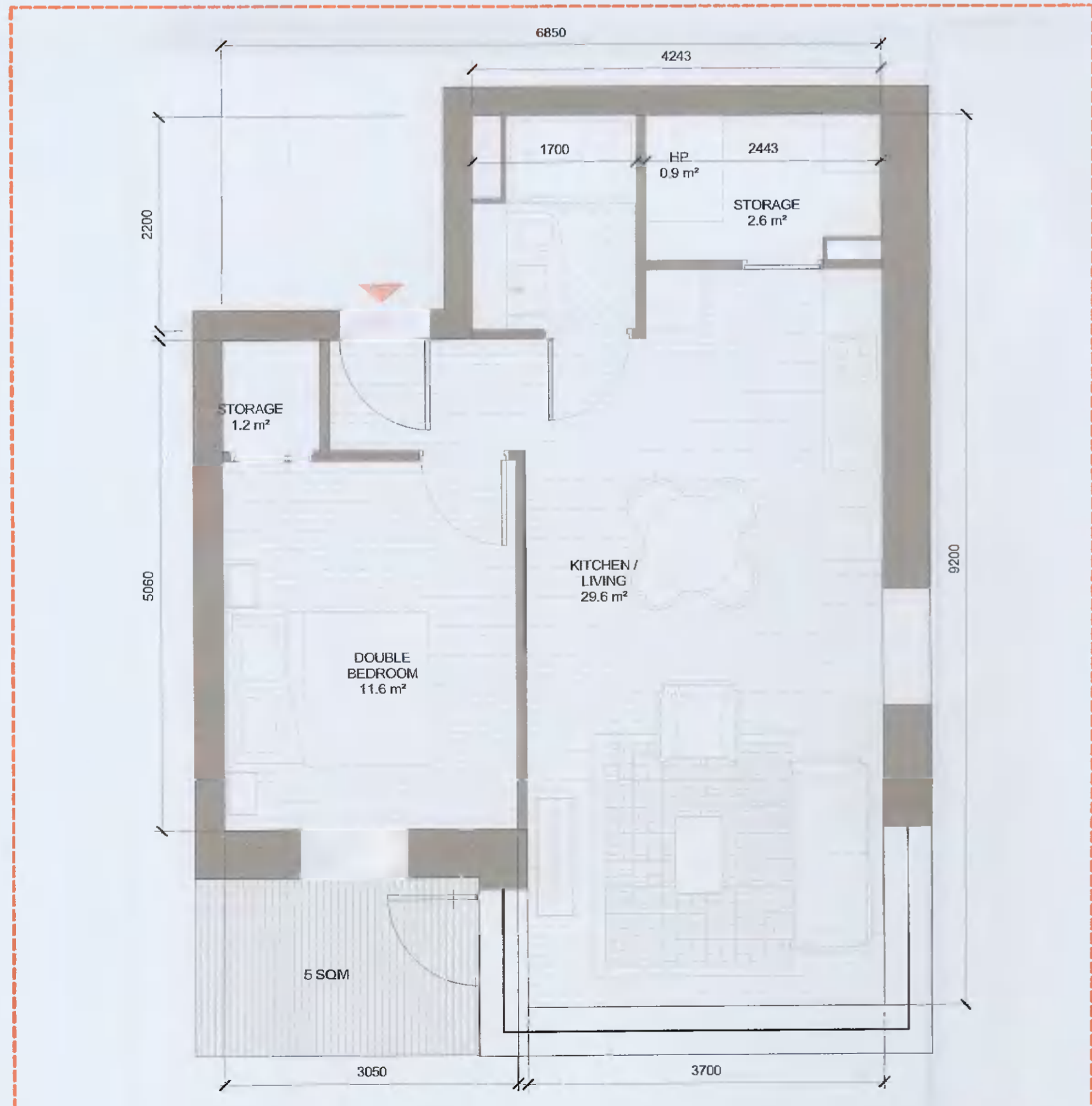


3 T.107\_A  
1:50

T.107_A SPACE REQUIREMENTS												
Apartment Area	Required Apartment Area	Required Area Met	Kitchen-Living Area	Required Kitchen-Living Area	Required Area Met	Total Bedroom Area	Required Total Bedroom Area	Required Area Met	Total Storage Area	Required Total Storage Area	Heat Pump Area	
49.5 m²	45.0 m²	Yes	27.7 m²	23.0 m²	Yes	11.4 m²	11.4 m²	Yes	3.5 m²	3.0 m²	Yes	1.0 m²

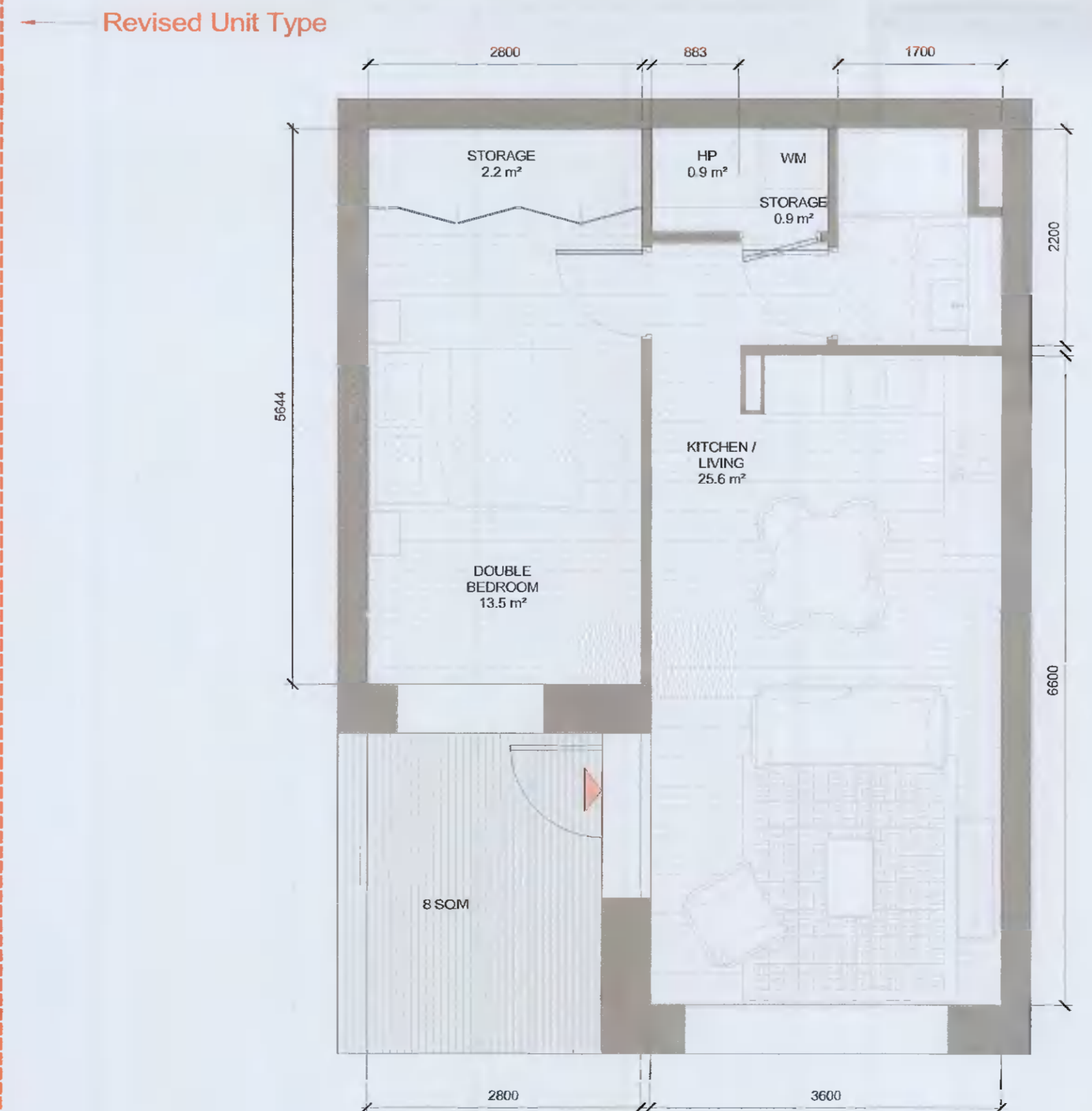
ALL DIMENSIONS TO BE CHECKED ON SITE  
NO DIMENSIONS TO BE SCALED FROM THIS DRAWING  
DRAWING IS TO BE READ IN CONJUNCTION WITH RELEVANT CONSULTANTS DRAWINGS

APARTMENT TYPE SUMMARY						
Count	Apartment Type	Unit Type	Description	Orientation	Area sqm	Min. Area
24	T.101_A	1B-2P	SINGLE		50.7	45.0
8	T.102_A	1B-2P	SINGLE	W	48.7	45.0
25	T.103_A	1B-2P			48.0	45.0
1	T.104_A	1B-2P	DUAL	N/E	54.6	45.0
15	T.105_CF	1B-2P	SINGLE	E	51.0	45.0
3	T.106_SB	1B-2P			46.3	45.0
1	T.107_A	1B-2P	SINGLE	W	49.5	45.0
1	T.108_SB	1B-2P			51.2	45.0
3	T.109_CF	1B-2P	SINGLE	W	48.4	45.0
1	T.109_SB	1B-2P			56.7	45.0
1	T.110_SB	1B-2P			54.5	45.0
1	T.111_CF	1B-2P	SINGLE	S/E	48.4	45.0
1	T.119_GF	1B-2P	DUAL	N/W	50.8	45.0
1:85						
9	T.201_A	2B-3P	SINGLE		63.9	63.0
30	T.202_A	2B-4P			80.3	73.0
3	T.203_A	2B-4P	DUAL	E/W	81.0	73.0
2	T.204_A	2B-4P	SINGLE	E	74.6	73.0
12	T.205_A	2B-4P			76.0	73.0
3	T.206_A	2B-4P	DUAL	E/W	80.7	73.0
2	T.207_A	2B-3P	SINGLE	E	68.0	63.0
8	T.208_A	2B-4P	DUAL	N/W	80.3	73.0
4	T.209_A	2B-4P	DUAL	S/E	80.3	73.0
5	T.211_A	2B-4P	DUAL	S/E	75.5	73.0
3	T.212_A	2B-4P	DUAL		80.9	73.0
3	T.213_A	2B-4P	DUAL		74.3	73.0
3	T.214_A	2B-4P	SINGLE	S	76.3	73.0
1	T.215_A	2B-4P	DUAL	S/W	81.6	73.0
1	T.216_A	2B-4P	DUAL	S/W	76.1	73.0
4	T.220_CF	2B-4P			73.0	73.0
1	T.221_CF	2B-4P	DUAL	S/W	75.5	73.0
1	T.223_CF	2B-4P	DUAL	S/E	76.1	73.0
1	T.224_CF	2B-4P	SINGLE	S	73.6	73.0
2	T.227_SB	2B-3P	DUAL		69.0	63.0
2:98						
2	T.301_A	3B	DUAL	N/E	98.6	90.0
3:2						
Grand total: 165						



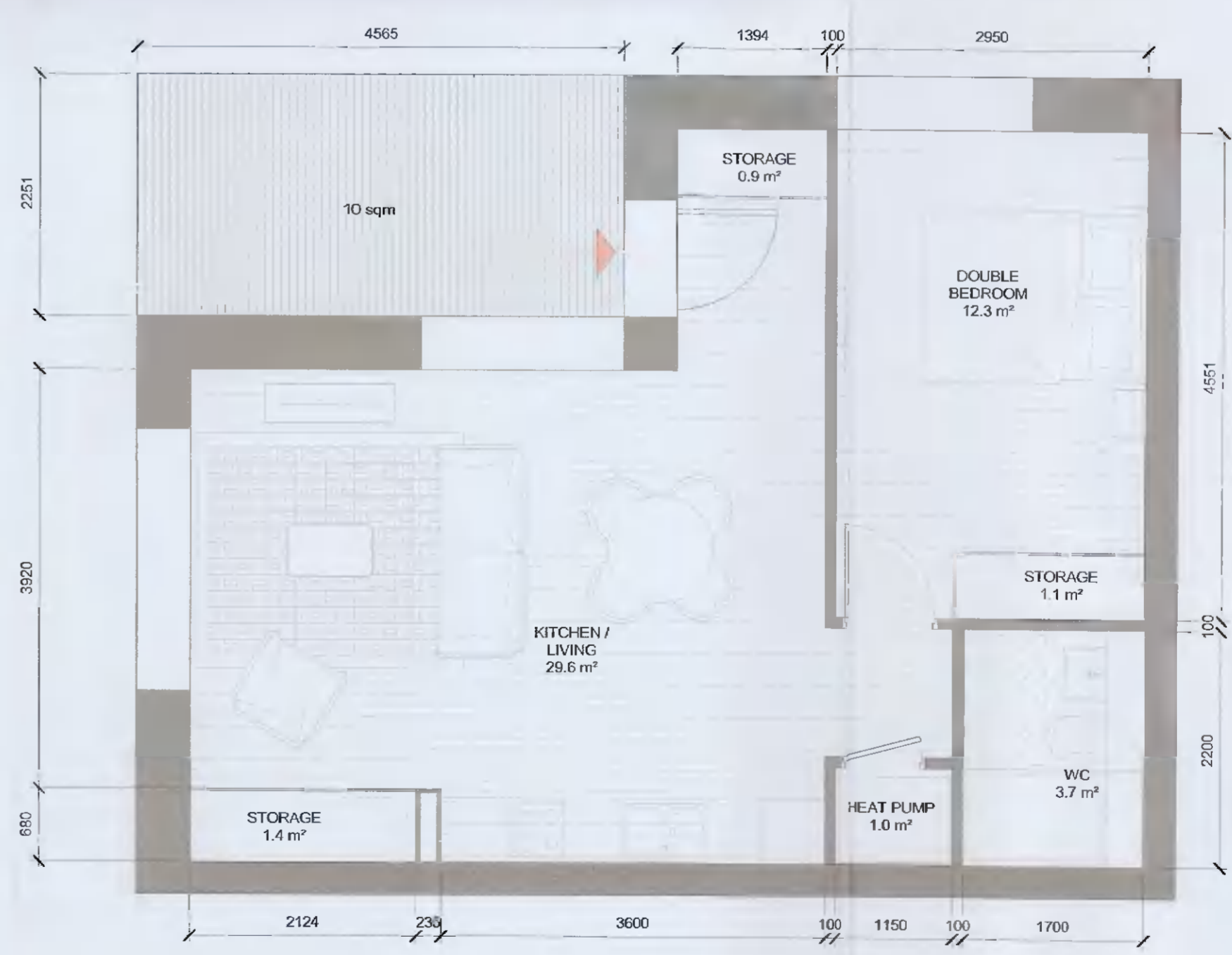
4 T.108\_SB  
1:50

T.108_SB SPACE REQUIREMENTS												
Apartment Area	Required Apartment Area	Required Area Met	Kitchen-Living Area	Required Kitchen-Living Area	Required Area Met	Total Bedroom Area	Required Total Bedroom Area	Required Area Met	Total Storage Area	Required Total Storage Area	Heat Pump Area	
51.2 m²	45.0 m²	Yes	29.6 m²	23.0 m²	Yes	11.6 m²	11.4 m²	Yes	3.8 m²	3.0 m²	Yes	0.9 m²



5 T.109\_GF  
1:50

T.109_GF SPACE REQUIREMENTS												
Apartment Area	Required Apartment Area	Required Area Met	Kitchen-Living Area	Required Kitchen-Living Area	Required Area Met	Total Bedroom Area	Required Total Bedroom Area	Required Area Met	Total Storage Area	Required Total Storage Area	Heat Pump Area	
48.4 m²	45.0 m²	Yes	25.6 m²	23.0 m²	Yes	13.5 m²	11.4 m²	Yes	3.1 m²	3.0 m²	Yes	0.9 m²



6 T.119\_GF  
1:50

T.119_GF SPACE REQUIREMENTS												
Apartment Area	Required Apartment Area	Required Area Met	Kitchen-Living Area	Required Kitchen-Living Area	Required Area Met	Total Bedroom Area	Required Total Bedroom Area	Required Area Met	Total Storage Area	Required Total Storage Area	Heat Pump Area	
50.8 m²	45.0 m²	Yes	29.6 m²	23.0 m²	Yes	12.3 m²	11.4 m²	Yes	3.4 m²	3.0 m²	Yes	1.0 m²

AMENDMENTS TO ADDRESS RFI 0796 DATED 15th JUNE 2021

AS PERMITTED UNDER REG. REF. SDZ21A/0007

REV	DATE	DESCRIPTION	CRH	DRN
P02	13/08/2021	ISSUED FOR FURTHER INFORMATION	DB	EA
P01	13/04/2021	ISSUED FOR PLANNING APPROVAL	RJ	EA

STATUS CODE DESCRIPTION  
ISSUED FOR FURTHER INFORMATION

CLIENT  
QUINTAIN IRELAND LTD.

PROJECT  
ADAMSTOWN STATION BLOCK G

DRAWING  
1 BED APARTMENT TYPES SHEET 2

PROJECT NUMBER  
950749

DATE  
13/09/21

SCALE@ A1  
As indicated

DRAWN/CHECKED:  
RJ/DB

STATUS CODE: DRAWING NUMBER  
ADC-HJL-G-ZZ-DR-A-8002

REVISION  
P02

Henry J Lyons

Architecture • Interiors  
henryjlyons.com

+353 1 888 3333  
info@henryjlyons.com

51-54 Pease Street  
Dublin D02 K466