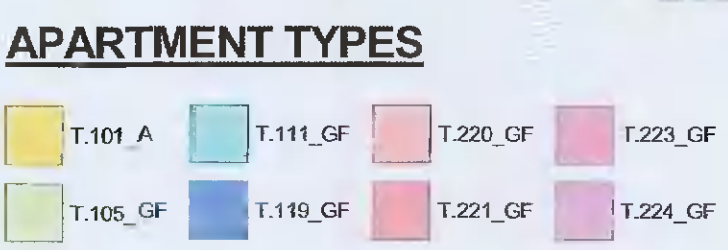
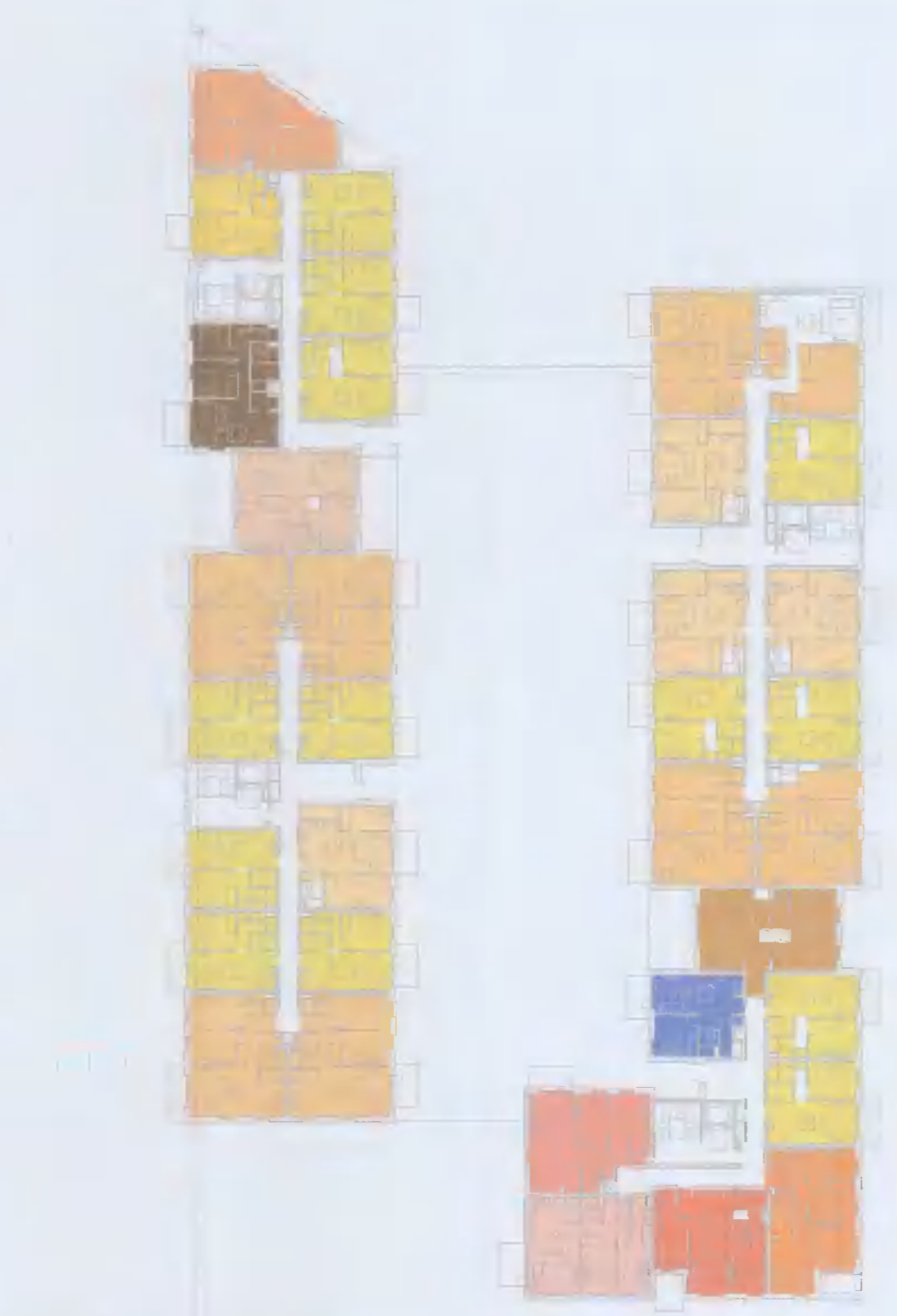


ALL DIMENSIONS TO BE CHECKED ON SITE
NO DIMENSIONS TO BE SCALED FROM THIS DRAWING
DRAWING IS TO BE READ IN CONJUNCTION WITH RELEVANT CONSULTANTS DRAWINGS

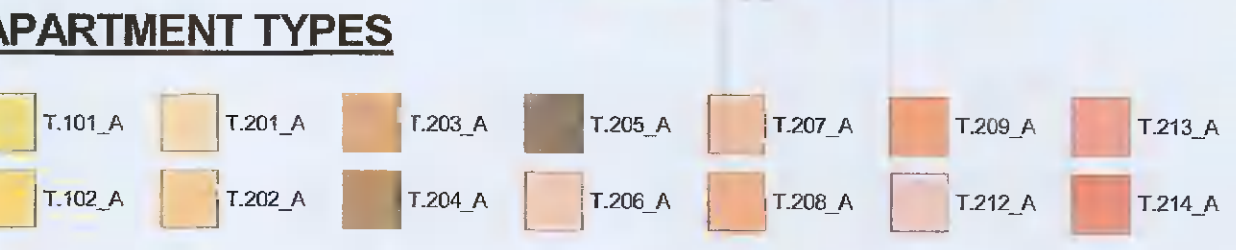
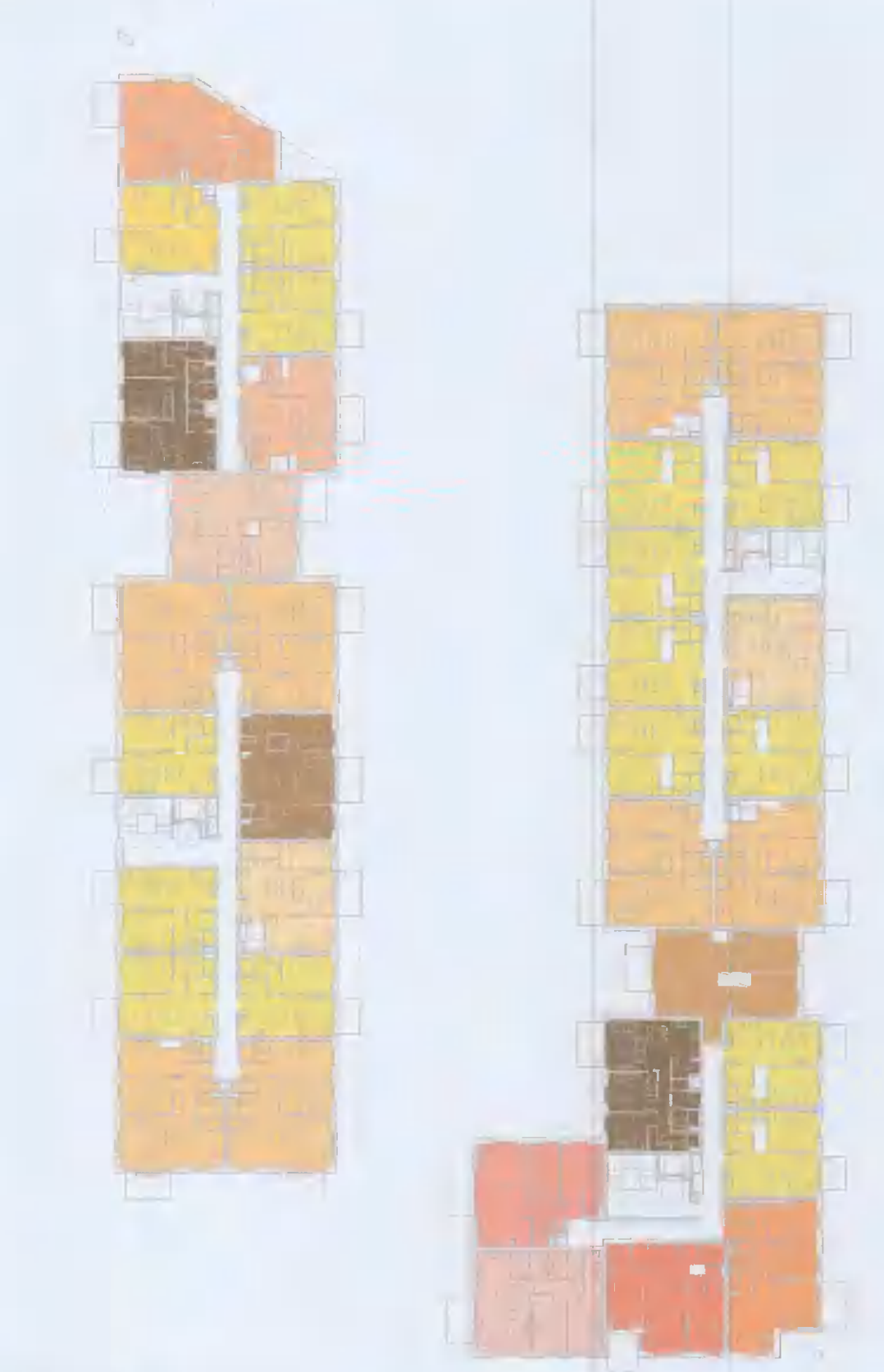
| APARTMENT TYPE SUMMARY | | | | | | |
|------------------------|----------------|-------------|-------------|----------------|-----------|--|
| Count | Apartment Type | Description | | Apartment Area | | |
| | | Unit Type | Orientation | Area sqm | Min. Area | |
| 34 | T.101_A | 1B-2P | SINGLE | 50.7 | 46.0 | |
| 8 | T.102_A | 1B-2P | SINGLE | 48.7 | 45.0 | |
| 25 | T.103_A | 1B-2P | SINGLE | 48.0 | 45.0 | |
| 1 | T.104_A | 1B-2P | DUAL | 54.6 | 45.0 | |
| 5 | T.105_CF | 1B-2P | SINGLE | 51.0 | 45.0 | |
| 3 | T.106_SB | 1B-2P | SINGLE | 46.3 | 45.0 | |
| 1 | T.107_A | 1B-2P | SINGLE | 49.5 | 45.0 | |
| 1 | T.108_SB | 1B-2P | DUAL | 51.2 | 45.0 | |
| 3 | T.109_CF | 1B-2P | SINGLE | 48.4 | 45.0 | |
| 1 | T.109_SB | 1B-2P | SINGLE | 56.7 | 45.0 | |
| 1 | T.110_SB | 1B-2P | DUAL | 54.5 | 45.0 | |
| 1 | T.111_CF | 1B-2P | SINGLE | 48.4 | 45.0 | |
| 1 | T.119_CF | 1B-2P | DUAL | 50.8 | 45.0 | |
| 1:85 | | | | | | |
| 9 | T.201_A | 2B-3P | SINGLE | 63.9 | 63.0 | |
| 30 | T.202_A | 2B-4P | SINGLE | 80.3 | 73.0 | |
| 3 | T.203_A | 2B-4P | DUAL | 81.0 | 73.0 | |
| 2 | T.204_A | 2B-4P | SINGLE | 74.6 | 73.0 | |
| 12 | T.205_A | 2B-4P | SINGLE | 76.0 | 73.0 | |
| 3 | T.206_A | 2B-4P | DUAL | 80.7 | 73.0 | |
| 2 | T.207_A | 2B-3P | SINGLE | 68.0 | 63.0 | |
| 8 | T.208_A | 2B-4P | DUAL | 80.3 | 73.0 | |
| 4 | T.209_A | 2B-4P | DUAL | 80.3 | 73.0 | |
| 5 | T.211_A | 2B-4P | DUAL | 75.5 | 73.0 | |
| 3 | T.212_A | 2B-4P | DUAL | 80.9 | 73.0 | |
| 3 | T.213_A | 2B-4P | DUAL | 74.3 | 73.0 | |
| 3 | T.214_A | 2B-4P | SINGLE | 76.3 | 73.0 | |
| 1 | T.215_A | 2B-4P | DUAL | 81.6 | 73.0 | |
| 1 | T.216_A | 2B-4P | DUAL | 76.1 | 73.0 | |
| 4 | T.220_CF | 2B-4P | SINGLE | 73.0 | 73.0 | |
| 1 | T.221_CF | 2B-4P | DUAL | 75.5 | 73.0 | |
| 1 | T.223_CF | 2B-4P | DUAL | 76.1 | 73.0 | |
| 1 | T.224_CF | 2B-4P | SINGLE | 73.6 | 73.0 | |
| 12 | T.227_SB | 2B-3P | DUAL | 69.0 | 63.0 | |
| 2:9B | | | | | | |
| 2 | T.301A | 3B | DUAL | 98.6 | 90.0 | |
| 3:2 | | | | | | |
| Grand total: 185 | | | | | | |



00 - APARTMENT TYPES
1 : 500



01 - APARTMENT TYPES
1 : 500

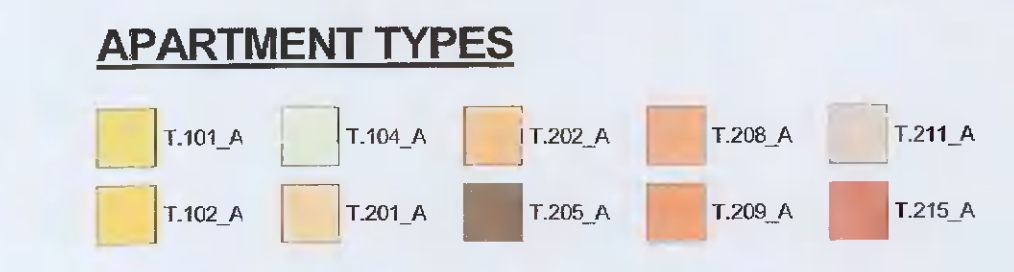


02 - APARTMENT TYPES
1 : 500

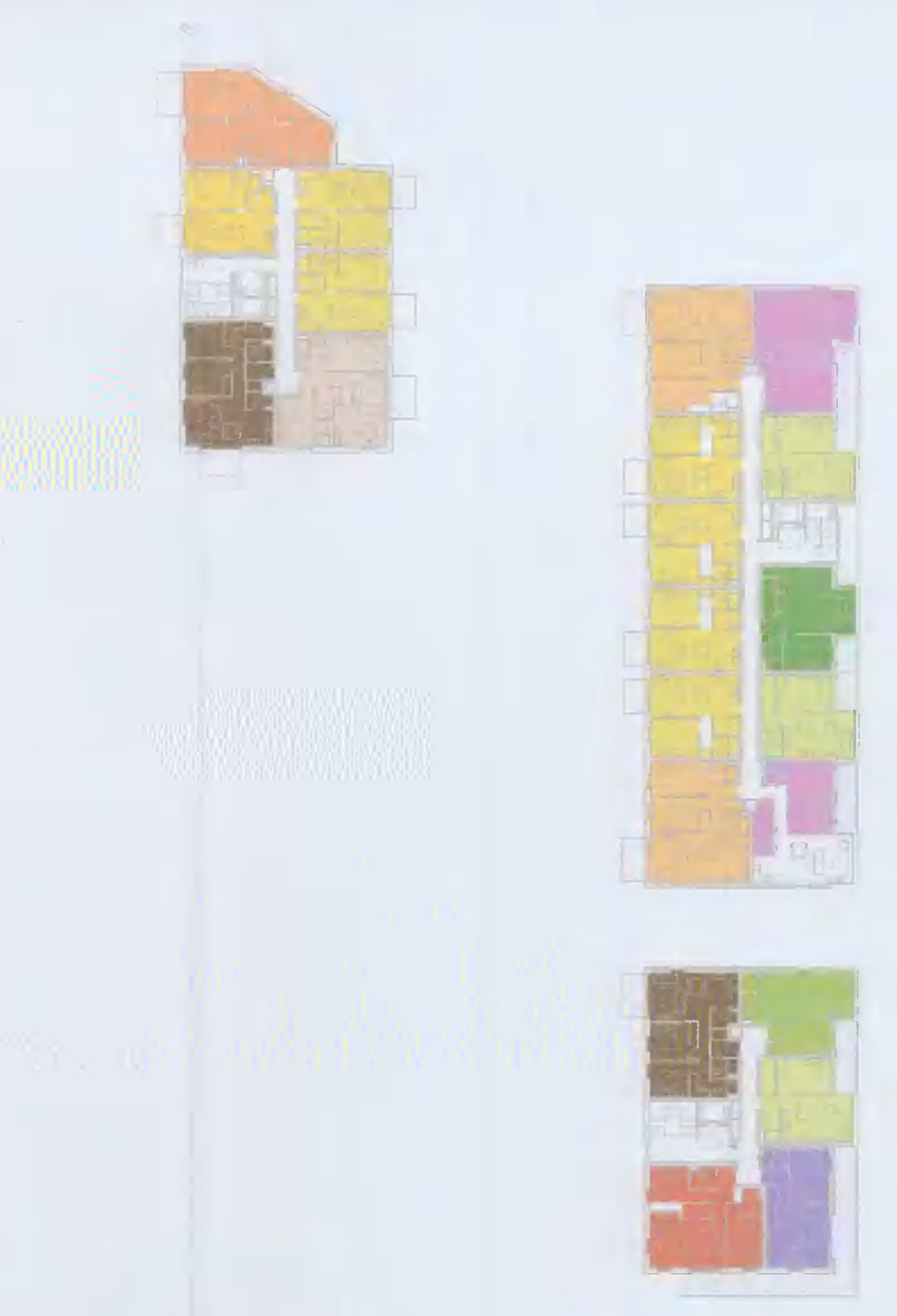


03 - APARTMENT TYPES
1 : 500

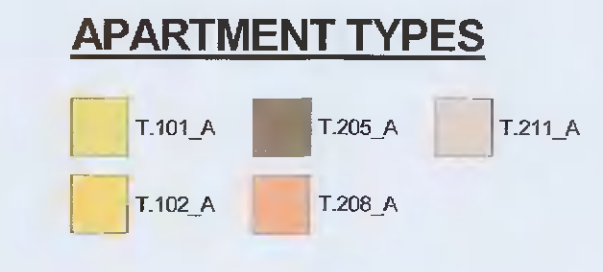
AMENDMENTS TO ADDRESS RFI 0796 DATED 15th JUNE 2021



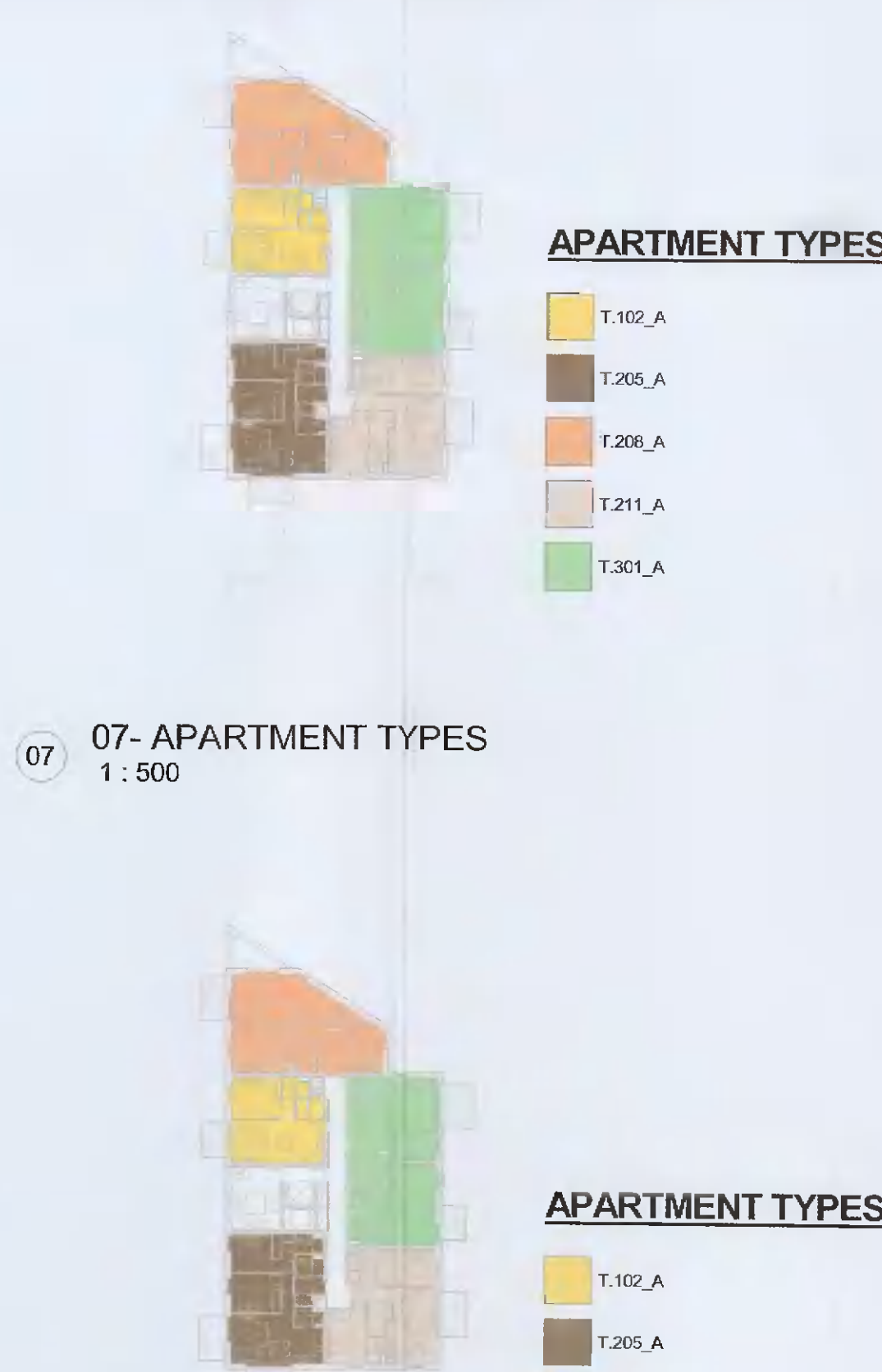
04 - APARTMENT TYPES
1 : 500



05 - APARTMENT TYPES
1 : 500



06 - APARTMENT TYPES
1 : 500



07 - APARTMENT TYPES
1 : 500

AS PERMITTED UNDER REG. REF. SDZ21A/0007

| REV | DATE | DESCRIPTION | CHK | DRN |
|-----|------------|--------------------------------|-----|-----|
| P02 | 13/08/2021 | ISSUED FOR FURTHER INFORMATION | DB | EA |
| P01 | 13/04/2021 | ISSUED FOR PLANNING APPROVAL | RJ | EA |

STATUS CODE DESCRIPTION
ISSUED FOR PLANNING APPROVAL

CLIENT
QUINTAIN IRELAND LTD.

PROJECT
ADAMSTOWN STATION BLOCK G

DRAWING
APARTMENT TYPES KEY PLANS

PROJECT NUMBER: 960740 DATE: 13/08/21

SCALE@ A1: As indicated DRAWN/CHECKED: RL/DB

STATUS CODE: A1 DRAWING NUMBER: ADC-HJL-G-ZZ-DR-A-8000 REVISION: P02