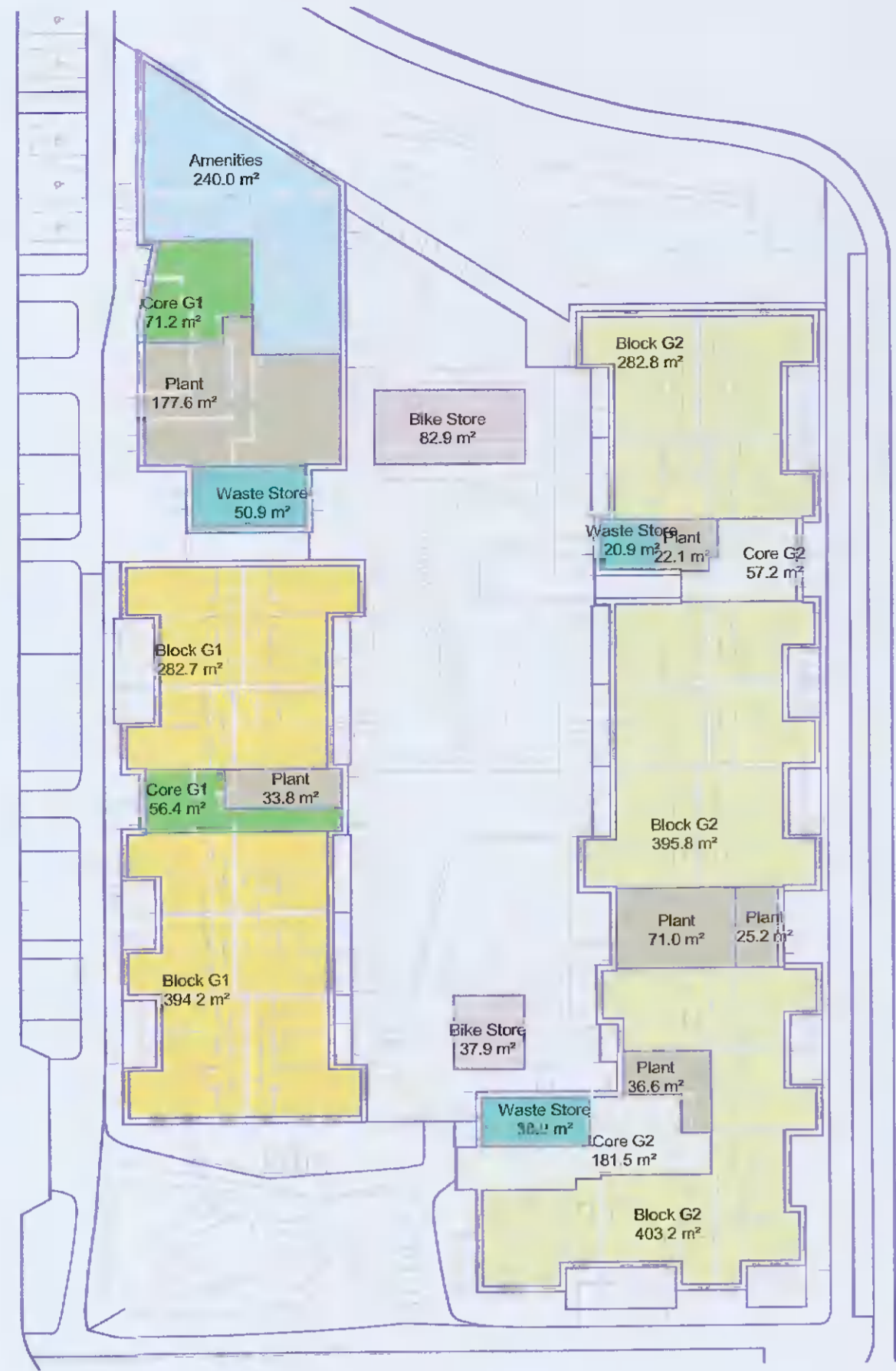


Area Name

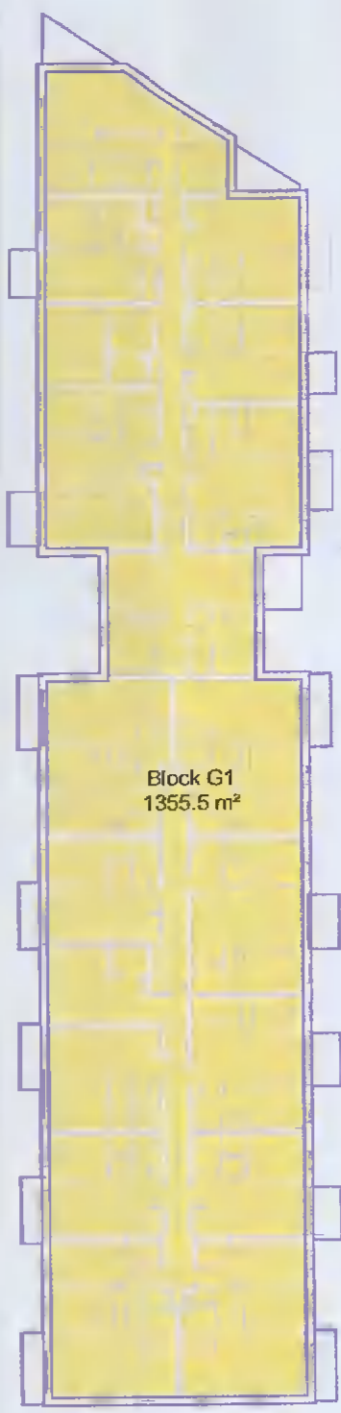
■ Amenities
■ Block G2
■ Plant
■ Bike Store
■ Core G1
■ Waste Store
■ Block G1
■ Core G2

AREAS - (GIA)

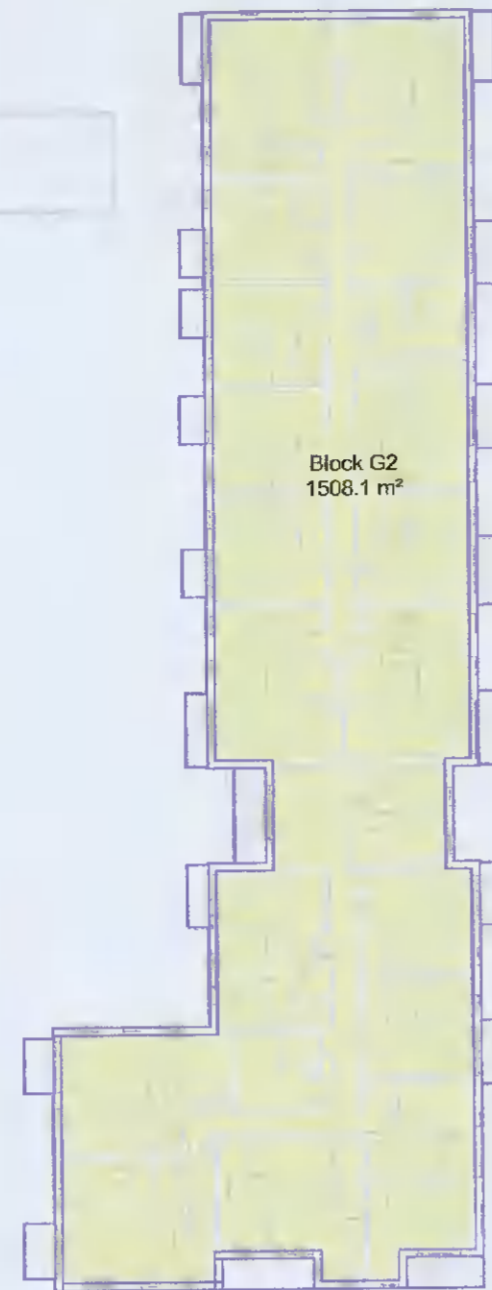
Level	Area Name	Level	Area
1. Residential			
00.01	Block G1	LEVEL 00G	262.7
00.01	Block G1	LEVEL 01G	394.2
01.01	Block G1	LEVEL 01G	1355.5
02.01	Block G1	LEVEL 02G	1355.0
03.01	Block G1	LEVEL 03G	1355.0
04.01	Block G1	LEVEL 04G	472.9
05.01	Block G1	LEVEL 05G	472.9
06.01	Block G1	LEVEL 06G	472.9
07.01	Block G1	LEVEL 07G	472.9
08.01	Block G1	LEVEL 08G	472.9
Block G1			7106.9
		Permitted =	6708.1
00.02	Block G2	LEVEL 00G	395.8
00.02	Block G2	LEVEL 01G	262.8
00.03	Block G2	LEVEL 01G	403.2
01.02	Block G2	LEVEL 01G	1508.1
02.02	Block G2	LEVEL 02G	1508.1
03.02	Block G2	LEVEL 03G	1508.1
04.02	Block G2	LEVEL 04G	826.4
05.02	Block G2	LEVEL 04G	348.0
05.02	Block G2	LEVEL 05G	348.0
Block G2			7261.2
		Permitted =	7807.6
00.01	Core G1	LEVEL 00G	71.2
00.01	Core G1	LEVEL 00G	56.4
Core G1			127.6
		Permitted =	131.7
00.01	Core G2	LEVEL 00G	57.2
00.01	Core G2	LEVEL 00G	181.5
Core G2			238.7
		Permitted =	14754.4
		Permitted =	14789.4
2. Amenities			
00.04	Amenities	LEVEL 00G	240.0
Amenities			240.0
		Permitted =	231.3
3. Ancillary			
00.07	Waste Store	LEVEL 00G	38.9
00.21	Waste Store	LEVEL 00G	50.9
00.54	Waste Store	LEVEL 00G	20.9
Waste Store			110.7
		Permitted =	163.9
4. Plant			
00.05	Plant	LEVEL 00G	177.6
00.30	Plant	LEVEL 00G	25.2
00.38	Plant	LEVEL 00G	33.8
00.46	Plant	LEVEL 00G	22.1
00.06	Plant	LEVEL 00G	71.0
00.47	Plant	LEVEL 00G	38.6
00.56	Plant	LEVEL 04G	16.9
Plant			383.1
		Permitted =	340.1
5. Bicycle Parking			
00.17	Bike Store	LEVEL 00G	82.9
00.18	Bike Store	LEVEL 00G	37.9
Bike Store			120.7
		Permitted =	200.7
		Permitted =	17763.7
Grand total			15608.9
		Permitted =	17763.7



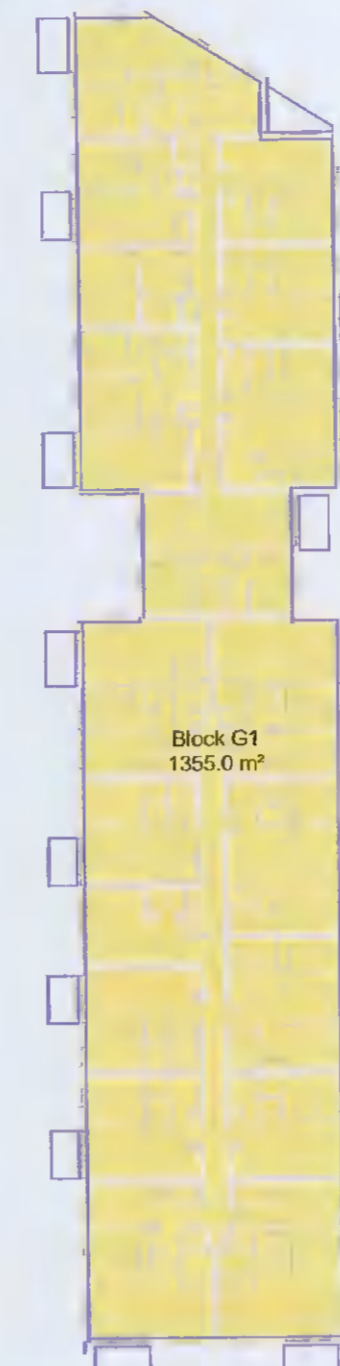
1 LEVEL 00 GIA
1 : 500



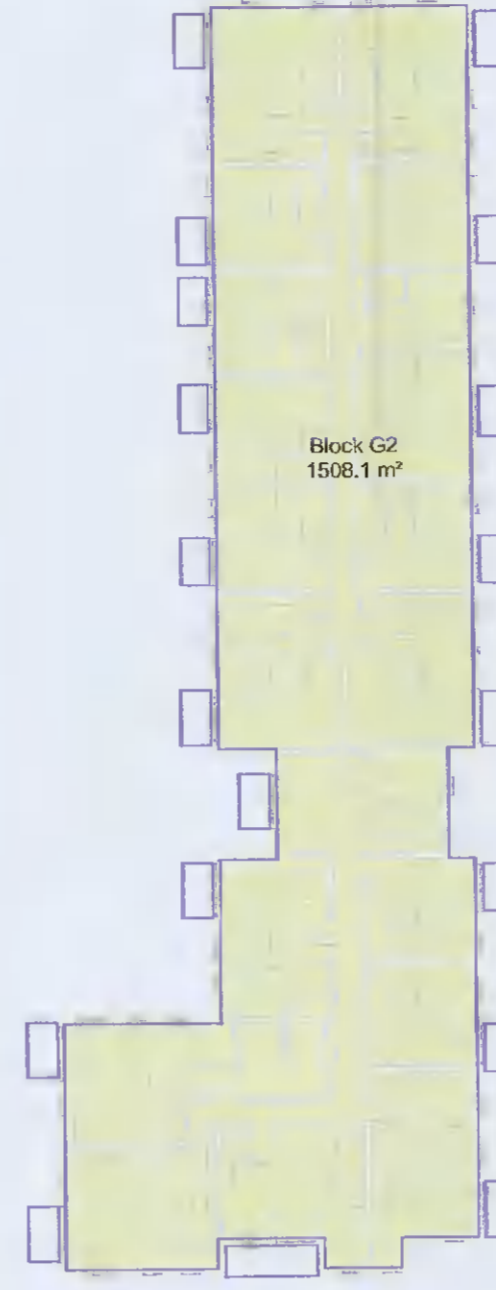
2 LEVEL 01 GIA
1 : 500



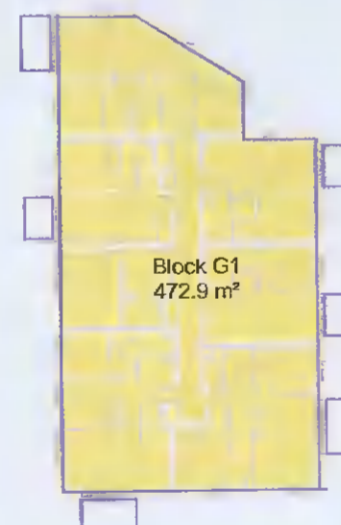
3 LEVEL 02 GIA
1 : 500



4 LEVEL 03 GIA
1 : 500



5 LEVEL 04 GIA
1 : 500



6 LEVEL 05 GIA
1 : 500



7 LEVEL 06 GIA
1 : 500

Count	Level	Area (GIA)
G1		
10	LEVEL 00G	643.2
17	LEVEL 01G	1107.2
17	LEVEL 02G	1107.2
17	LEVEL 03G	1107.2
16	LEVEL 04G	373.9
6	LEVEL 05G	373.9
6	LEVEL 06G	373.9
5	LEVEL 07G	376.4
5	LEVEL 08G	376.4
88		5839.2
G2		
16	LEVEL 00G	1024.9
19	LEVEL 01G	1249.9
19	LEVEL 02G	1249.9
19	LEVEL 03G	1249.9
17	LEVEL 04G	1078.2
5	LEVEL 05G	275.0
95		6127.9
184		11967.1

Number	Level	Area
G1		
00.01	LEVEL 00G	604.5
01.01	LEVEL 01G	1355.5
02.01	LEVEL 02G	1355.0
03.01	LEVEL 03G	1355.0
04.01	LEVEL 04G	472.9
05.01	LEVEL 05G	472.9
06.01	LEVEL 06G	472.9
07.01	LEVEL 07G	472.9
08.01	LEVEL 08G	472.9
		7234.5
G2		
00.02	Not Placed	0.0
	LEVEL 00G	1320.6
01.02	LEVEL 01G	1508.1
02.02	LEVEL 02G	1508.1
03.02	LEVEL 03G	1508.1
04.02	LEVEL 04G	1327.1
05.02	LEVEL 05G	348.0
		7519.9
Grand total		14754.4

8 LEVEL 07 GIA
1 : 500

9 LEVEL 08 GIA
1 : 500

REV	DATE	DESCRIPTION	CHK	DRN
P03	11/10/2021	ISSUED FOR PLANNING APPROVAL	RJ	SH
P02				
P01	13/04/2021	ISSUED FOR PLANNING APPROVAL	RJ	EA

STATUS CODE DESCRIPTION
ISSUED FOR PLANNING APPROVAL

CLIENT
QUINTAIN IRELAND LTD.

PROJECT
ADAMSTOWN STATION BLOCK G

DRAWING
SCHEDULE OF AREAS (GIA)

PROJECT NUMBER
880749

DATE
13/04/21

SCALE@ A1:
1 : 500

STATUS CODE: A1
DRAWING NUMBER: ADC-HJL-G-ZZ-DR-A-1900
REVISION: P03

Henry J Lyons

Architecture + Interiors
henryjlyons.com

+353 1 888 3333
info@henryjlyons.com

51-54 Pearce Street
Dublin D02 K4B8