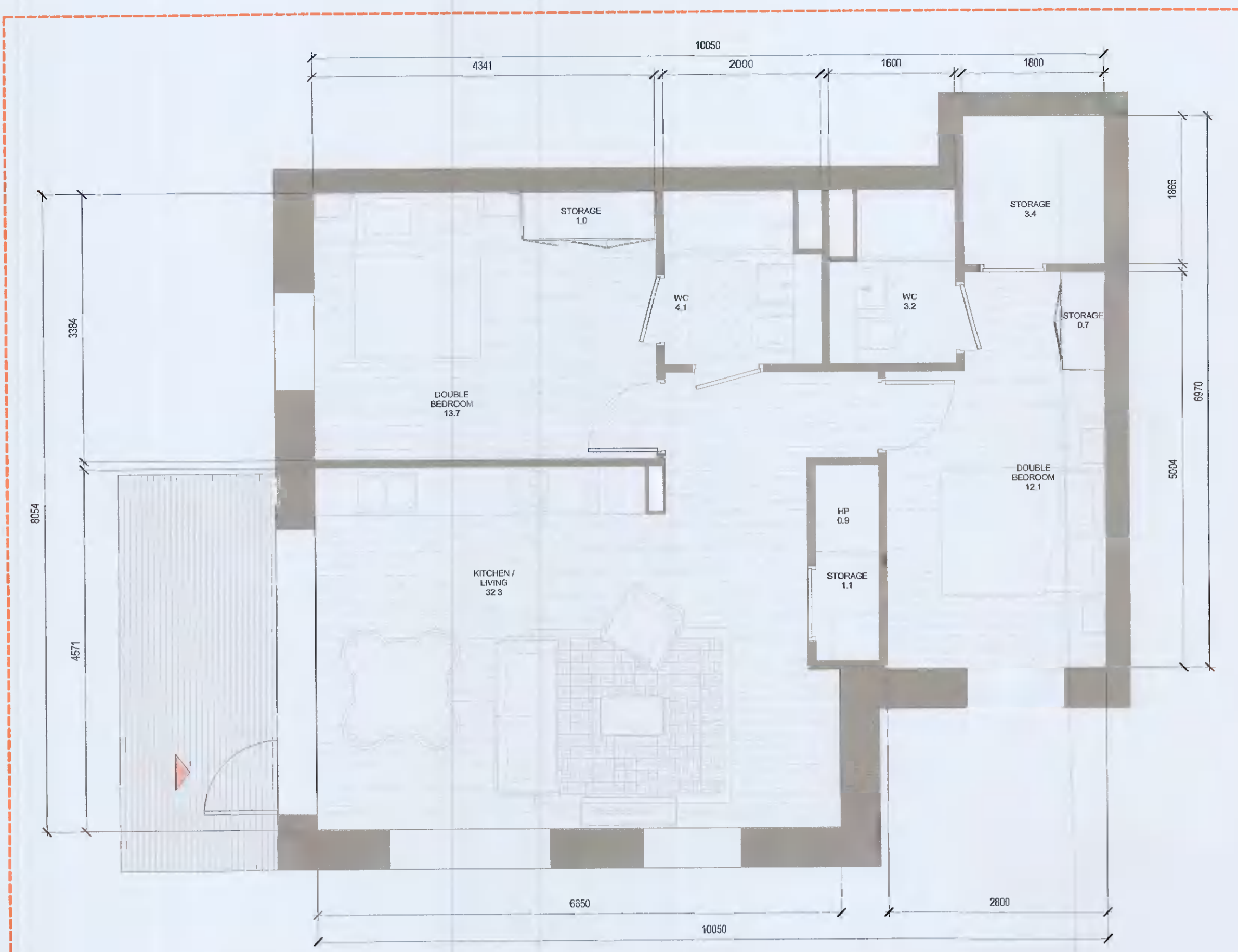


1 T.220_GF
1 : 50

T.220_GF SPACE REQUIREMENTS											
Apartment Area	Required Apartment Area	Required Area Met	Kitchen - Living Area	Required Kitchen - Living Area	Required Area Met	Total Bedroom Area	Required Total Bedroom Area	Required Area Met	Total Storage Area	Required Total Storage Area	Heat Pump Area
82.8 m ²	73.0 m ²	Yes	32.3 m ²	30.0 m ²	Yes	29.7 m ²	24.4 m ²	Yes	6.4 m ²	6.0 m ²	Yes 1.2 m ²



2 T.221_GF
1 : 50

T.221_GF SPACE REQUIREMENTS											
Apartment Area	Required Apartment Area	Required Area Met	Kitchen - Living Area	Required Kitchen - Living Area	Required Area Met	Total Bedroom Area	Required Total Bedroom Area	Required Area Met	Total Storage Area	Required Total Storage Area	Heat Pump Area
75.8 m ²	73.0 m ²	Yes	32.3 m ²	30.0 m ²	Yes	25.8 m ²	24.4 m ²	Yes	6.2 m ²	6.0 m ²	Yes 0.9 m ²

APARTMENTS by TYPE					
Count	Unit Type	Type Name	Area sqm	Min. Area	Blk Name
6	1B	T.101_A	46.6	45.0	T.101_A
8	1B	T.102_A	46.0	45.0	T.102_A
50	1B	T.103_A	49.6	45.0	T.103_A
1	1B	T.104_A	50.9	45.0	T.104_A
1	1B	T.105_A	45.9	45.0	T.105_A
1	1B	T.106_A	45.9	45.0	T.106_A
1	1B	T.107_A	51.8	45.0	T.107_A
6	1B	T.108_CF	52.9	45.0	T.108_CF
8	1B	T.109_CF	51.1	45.0	T.109_CF
1	1B	T.110_CF	56.1	45.0	T.110_CF

3	2B-3P	T.201_A	63.9	63.0	T.201_A
3	2B-3P	T.207_A	68.6	63.0	T.207_A
4	2B-3P	T.215_A	63.7	63.0	T.215_A
1	2B-3P	T.216_A	65.6	63.0	T.216_A

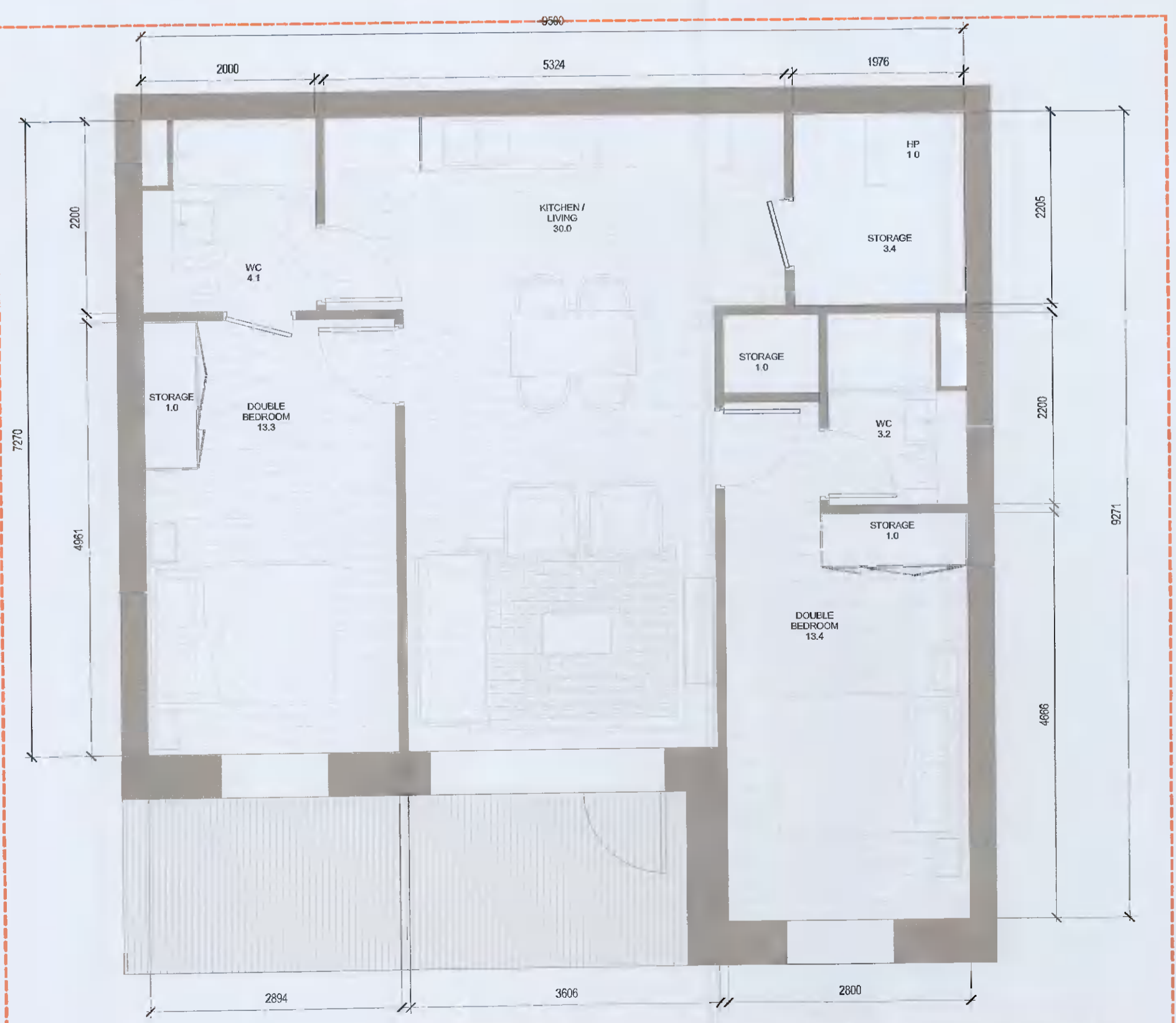
28	2B-4P	T.202_A	80.3	73.0	T.202_A
3	2B-4P	T.203_A	78.1	73.0	T.203_A
3	2B-4P	T.204_A	74.6	73.0	T.204_A
12	2B-4P	T.205_A	74.8	73.0	T.205_A
3	2B-4P	T.206_A	83.2	73.0	T.206_A
8	2B-4P	T.208_A	80.3	73.0	T.208_A
4	2B-4P	T.209_A	81.5	73.0	T.209_A
11	2B-4P	T.210_A	76.8	73.0	T.210_A
1	2B-4P	T.211_A	76.6	73.0	T.211_A
3	2B-4P	T.212_A	82.6	73.0	T.212_A
3	2B-4P	T.213_A	76.7	73.0	T.213_A
4	2B-4P	T.214_A	74.7	73.0	T.214_A
8	2B-4P	T.220_CF	82.8	73.0	T.220_CF
1	2B-4P	T.221_CF	75.8	73.0	T.221_CF
1	2B-4P	T.222_CF	74.7	73.0	T.222_CF
1	2B-4P	T.223_CF	73.0	73.0	T.223_CF

2	3B	T.301_A	98.8	90.0	T.301_A
---	----	---------	------	------	---------

Grand total: 184

HJL Drawing (Number on previously lodged planning application (SDZ21A/0007))
ADC-HJL-G-ZZ-DR-A-8007 Revision (P01)

Red dashed line indicates extent of amendments to proposal from previous planning application SDZ21A/0007



3 T.222_GF
1 : 50

T.222_GF SPACE REQUIREMENTS											
Apartment Area	Required Apartment Area	Required Area Met	Kitchen - Living Area	Required Kitchen - Living Area	Required Area Met	Total Bedroom Area	Required Total Bedroom Area	Required Area Met	Total Storage Area	Required Total Storage Area	Heat Pump Area
74.7 m ²	73.0 m ²	Yes	30.0 m ²	30.0 m ²	Yes	26.1 m ²	24.4 m ²	Yes	6.4 m ²	6.0 m ²	Yes 1.0 m ²

PC	DATE	DESCRIPTION	CHK	DRN
PC3	11/10/2021	ISSUED FOR PLANNING APPROVAL	RJ	SH
P01	13/04/2021	ISSUED FOR PLANNING APPROVAL	RJ	EA

STATUS CODE DESCRIPTION
ISSUED FOR PLANNING APPROVAL

CLIENT
QUINTAIN IRELAND LTD.

PROJECT
ADAMSTOWN STATION BLOCK G

DRAWING
2 BED APARTMENT TYPES SHEET 5

PROJECT NUMBER	DATE	SCALE@ A1:	DRAWN/CHECKED:
950749	13/04/21	As indicated	RLJ/DE

STATUS CODE:	DRAWING NUMBER	REVISION
A1	ADC-HJL-G-ZZ-DR-A-8007	P03