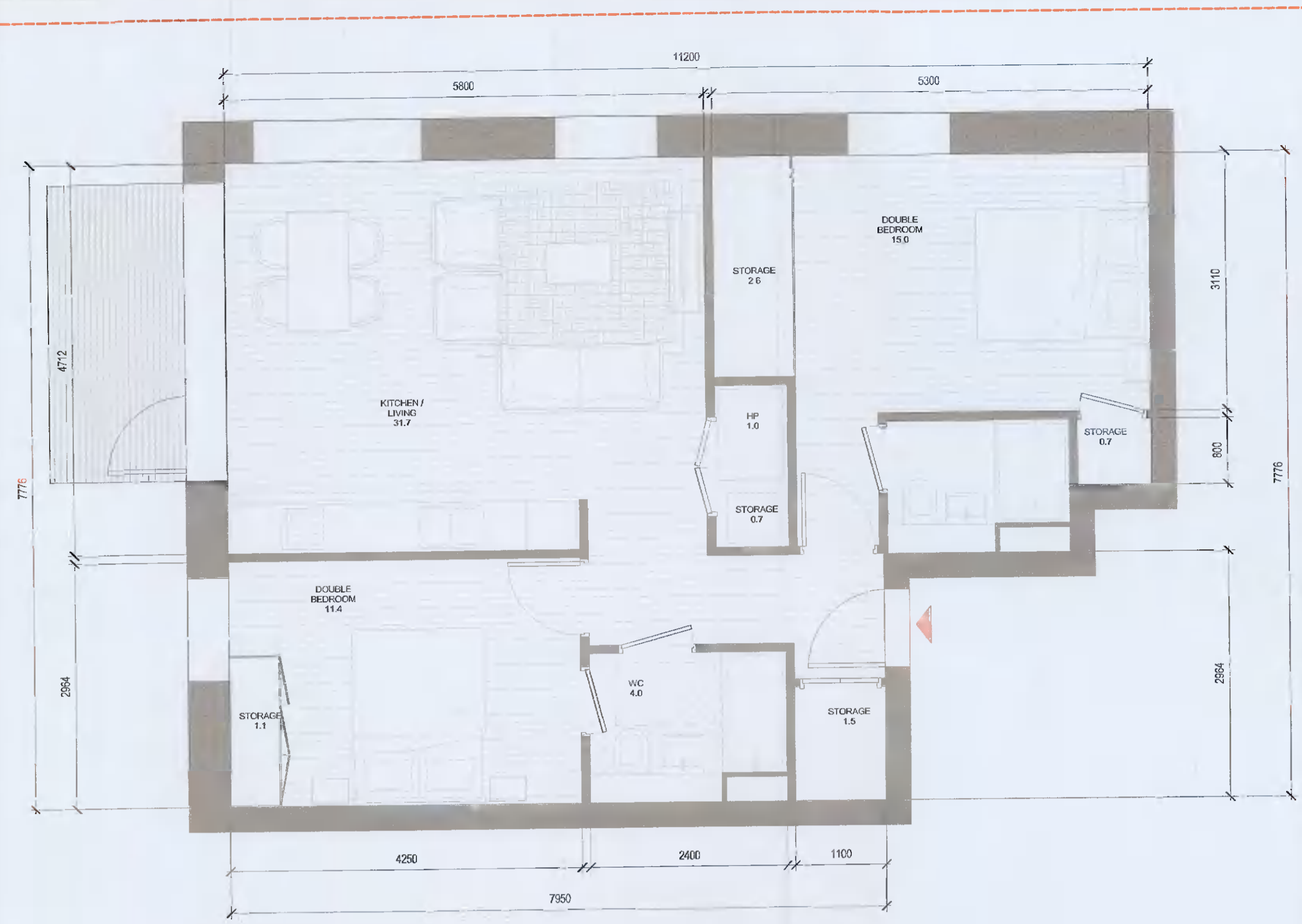
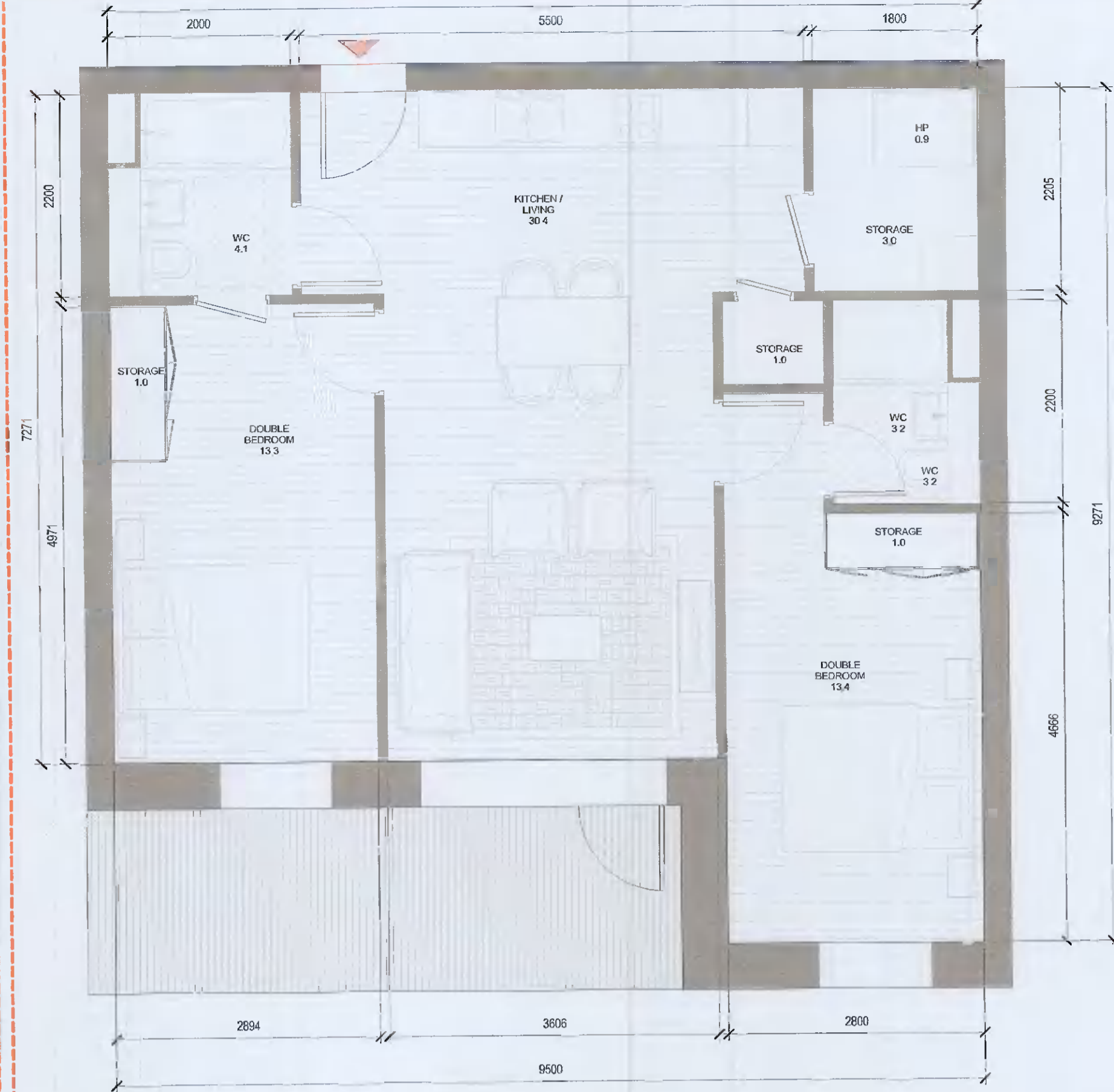


ALL DIMENSIONS TO BE CHECKED ON SITE
NO DIMENSIONS TO BE SCALED FROM THIS DRAWING
DRAWING IS TO BE READ IN CONJUNCTION WITH RELEVANT CONSULTANTS DRAWINGS



1 T.213_A
1:50

T.213_A SPACE REQUIREMENTS									
Apartment Area	Required Apartment Area	Required Area Met	Kitchen - Living Area	Required Kitchen - Living Area	Total Bedroom Area	Required Total Bedroom Area	Total Storage Area	Required Total Storage Area	Heat Pump Area
76.7 m ²	73.0 m ²	Yes	31.7 m ²	30.0 m ²	26.4 m ²	24.4 m ²	6.6 m ²	6.0 m ²	Yes 1.0 m ²



2 T.214_A
1:50

T.214_A SPACE REQUIREMENTS									
Apartment Area	Required Apartment Area	Required Area Met	Kitchen - Living Area	Required Kitchen - Living Area	Total Bedroom Area	Required Total Bedroom Area	Total Storage Area	Required Total Storage Area	Heat Pump Area
74.7 m ²	73.0 m ²	Yes	30.4 m ²	30.0 m ²	29.7 m ²	24.4 m ²	6.0 m ²	6.0 m ²	Yes 0.9 m ²

APARTMENTS by TYPE

Count	Apartment Type	Type Name	Area sqm	Min. Area	Blk Name
5	1B	T.101_A	46.6	45.0	T.101_A
15	1B	T.102_A	46.0	45.0	T.102_A
50	1B	T.103_A	49.6	45.0	T.103_A
1	1B	T.104_A	49.5	45.0	T.104_A
1	1B	T.105_A	50.9	45.0	T.105_A
1	1B	T.106_A	45.9	45.0	T.106_A
1	1B	T.107_A	51.8	45.0	T.107_A
6	1B	T.108_CF	52.9	45.0	T.108_CF
8	1B	T.109_CF	51.1	45.0	T.109_CF
1	1B	T.110_CF	56.1	45.0	T.110_CF

TB: 85

3	2B-3P	T.201_A	63.9	63.0	T.201_A
3	2B-3P	T.207_A	68.6	63.0	T.207_A
4	2B-3P	T.215_A	63.7	63.0	T.215_A
1	2B-3P	T.216_A	66.6	63.0	T.216_A

2B-3P: 11

28	2B-4P	T.202_A	80.5	73.0	T.202_A
3	2B-4P	T.203_A	78.1	73.0	T.203_A
3	2B-4P	T.204_A	74.6	73.0	T.204_A
12	2B-4P	T.205_A	74.8	73.0	T.205_A
3	2B-4P	T.206_A	83.2	73.0	T.206_A
8	2B-4P	T.208_A	80.3	73.0	T.208_A
4	2B-4P	T.209_A	81.6	73.0	T.209_A
1	2B-4P	T.210_A	76.8	73.0	T.210_A
5	2B-4P	T.211_A	76.6	73.0	T.211_A
3	2B-4P	T.212_A	82.6	73.0	T.212_A
3	2B-4P	T.213_A	76.7	73.0	T.213_A
4	2B-4P	T.214_A	74.7	73.0	T.214_A
8	2B-4P	T.220_CF	82.8	73.0	T.220_CF
1	2B-4P	T.221_CF	75.8	73.0	T.221_CF
1	2B-4P	T.222_CF	74.7	73.0	T.222_CF
1	2B-4P	T.223_CF	73.0	73.0	T.223_CF

2B-4P: 88

2	3B	T.301_A	98.8	90.0	T.301_A
---	----	---------	------	------	---------

3B: 2
Grand total: 184

HJL Drawing Number on previously lodged planning application (SD221A/0007)
ADC-HJL-G-ZZ-DR-A-8006 Revision (P01)

Red dashed line indicates extent of amendments to proposal from previous planning application SD221A/0007

PO3	11/10/2021	ISSUED FOR PLANNING APPROVAL	RJ	SH
P01	13/04/2021	ISSUED FOR PLANNING APPROVAL	RJ	EA
REV	DATE	DESCRIPTION	CHK	DRN

STATUS CODE DESCRIPTION
ISSUED FOR PLANNING APPROVAL

CLIENT
QUINTAIN IRELAND LTD.

PROJECT
ADAMSTOWN STATION BLOCK G

DRAWING
2 BED APARTMENT TYPES SHEET 4

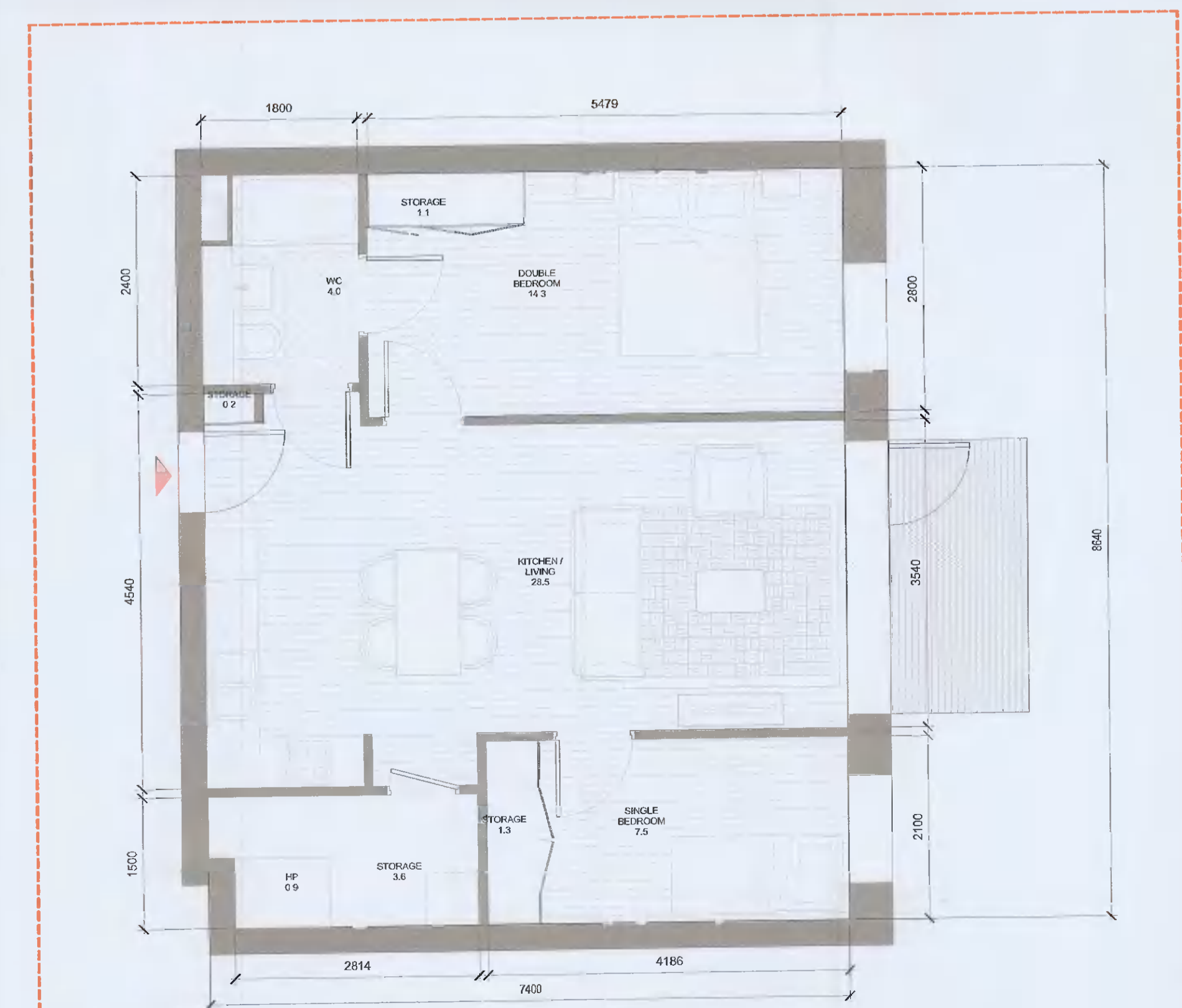
PROJECT NUMBER: 850749 DATE: 13/04/21

SCALE@ A1: As indicated DRAWING CHECKED: RJ/DB

STATUS CODE: A1 DRAWING NUMBER: ADC-HJL-G-ZZ-DR-A-8006 REVISION: PO3

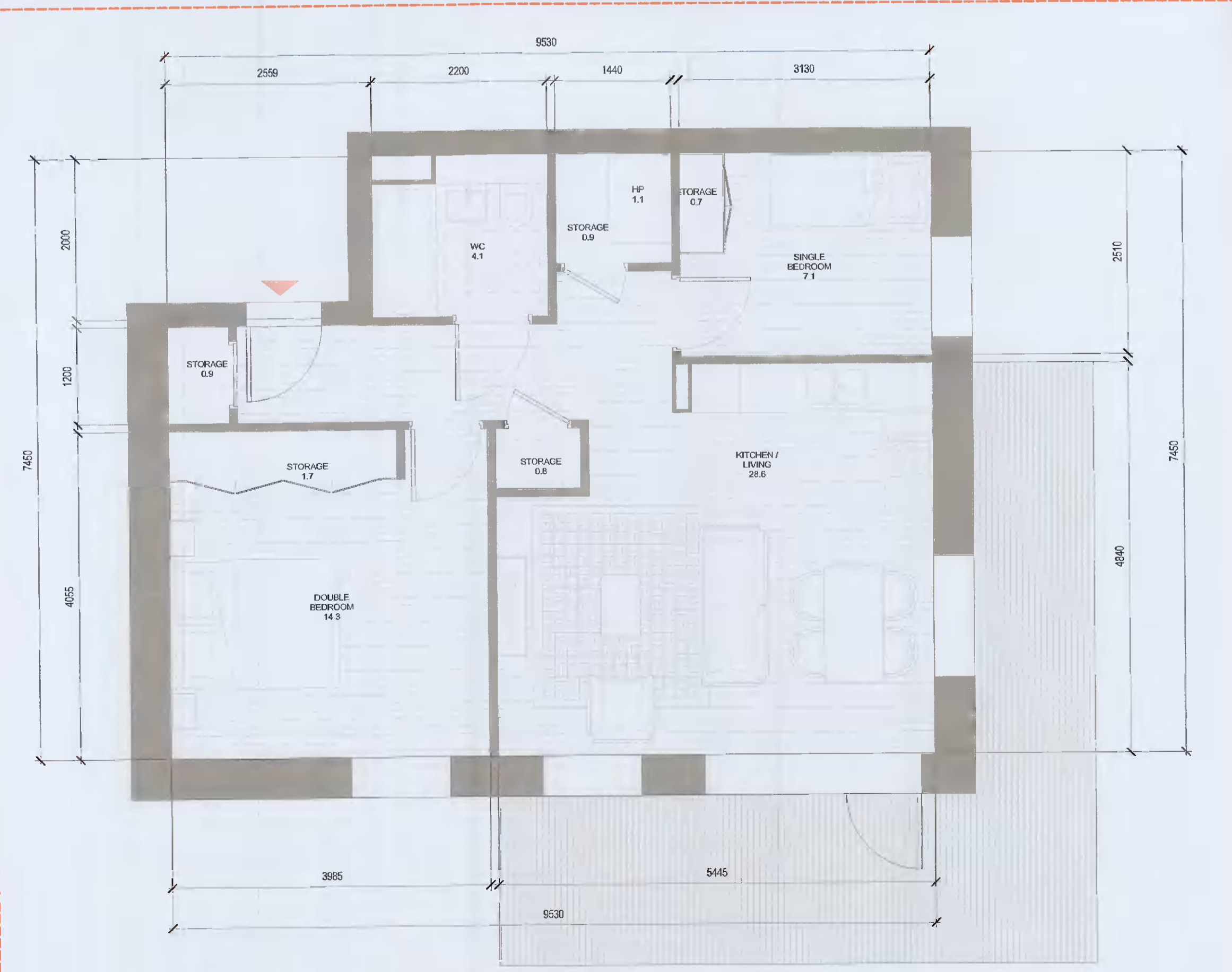
Henry J Lyons

Architecture + Interiors henryjlyons.com +353 1 888 3333 info@henryjlyons.com 51-54 Pearse Street Dublin D02 KA66



3 T.215_A
1:50

T.215_A SPACE REQUIREMENTS									
Apartment Area	Required Apartment Area	Required Area Met	Kitchen - Living Area	Required Kitchen - Living Area	Total Bedroom Area	Required Total Bedroom Area	Total Storage Area	Required Total Storage Area	Heat Pump Area
63.7 m ²	63.0 m ²	Yes	26.5 m ²	26.0 m ²	21.8 m ²	20.1 m ²	6.2 m ²	5.0 m ²	Yes 0.9 m ²



4 T.216_A
1:50

T.216_A SPACE REQUIREMENTS									
Apartment Area	Required Apartment Area	Required Area Met	Kitchen - Living Area	Required Kitchen - Living Area	Total Bedroom Area	Required Total Bedroom Area	Total Storage Area	Required Total Storage Area	Heat Pump Area
65.6 m ²	63.0 m ²	Yes	28.6 m ²	28.0 m ²	21.4 m ²	20.1 m ²	5.0 m ²	5.0 m ²	Yes 1.1 m ²