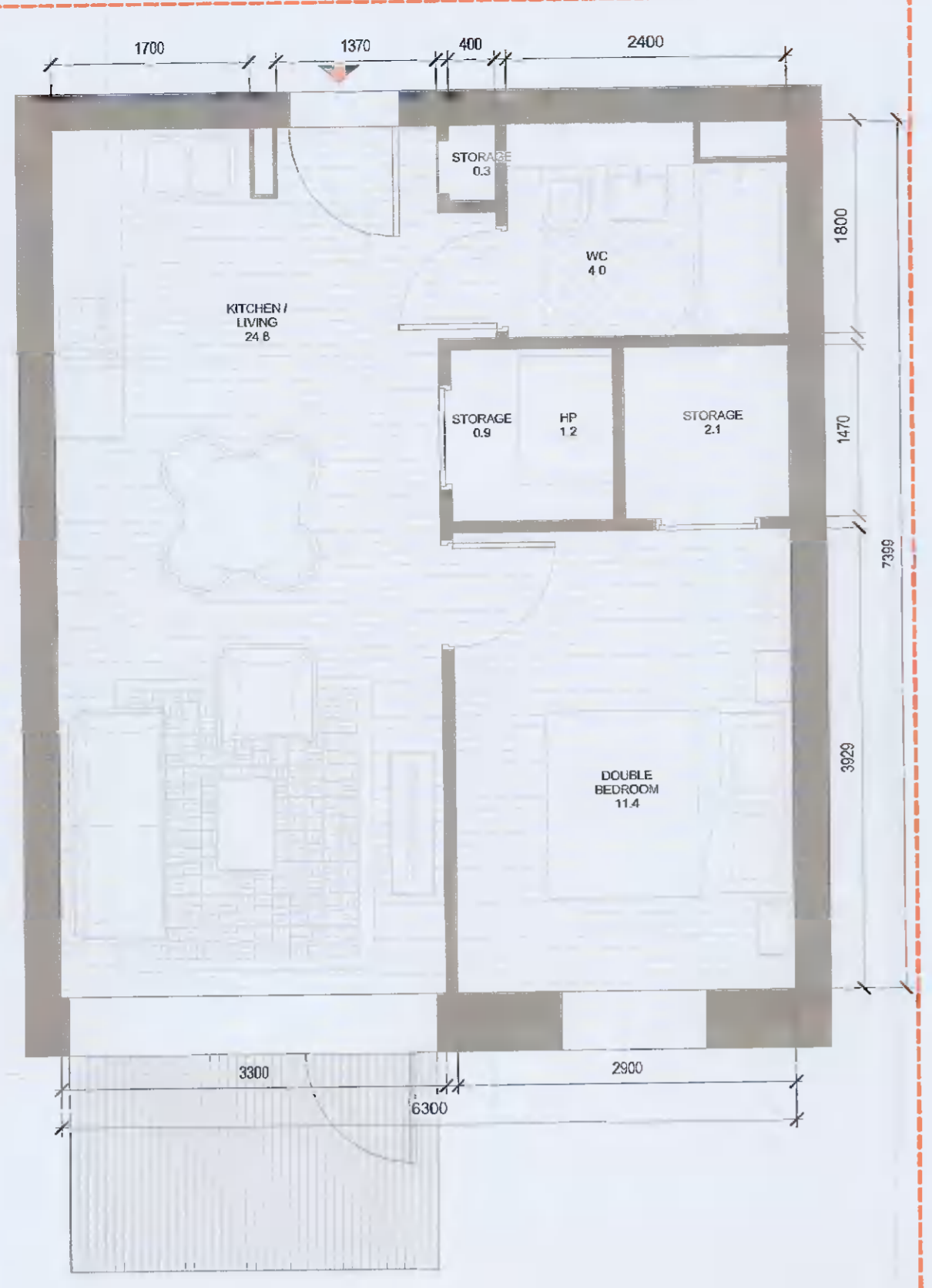
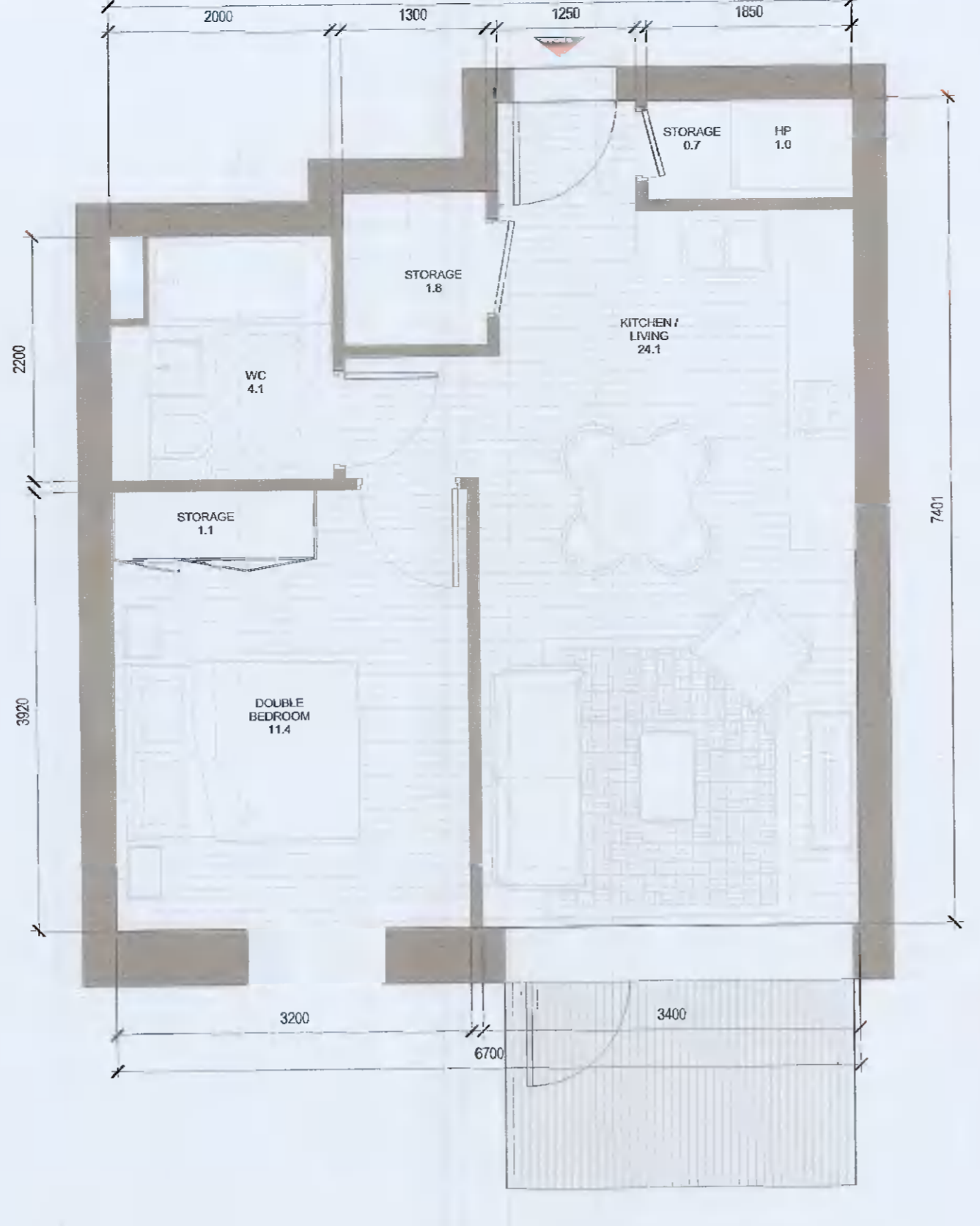


ALL DIMENSIONS TO BE CHECKED ON SITE
NO DIMENSIONS TO BE SCALED FROM THIS DRAWING
DRAWING IS TO BE READ IN CONJUNCTION WITH RELEVANT CONSULTANTS DRAWINGS



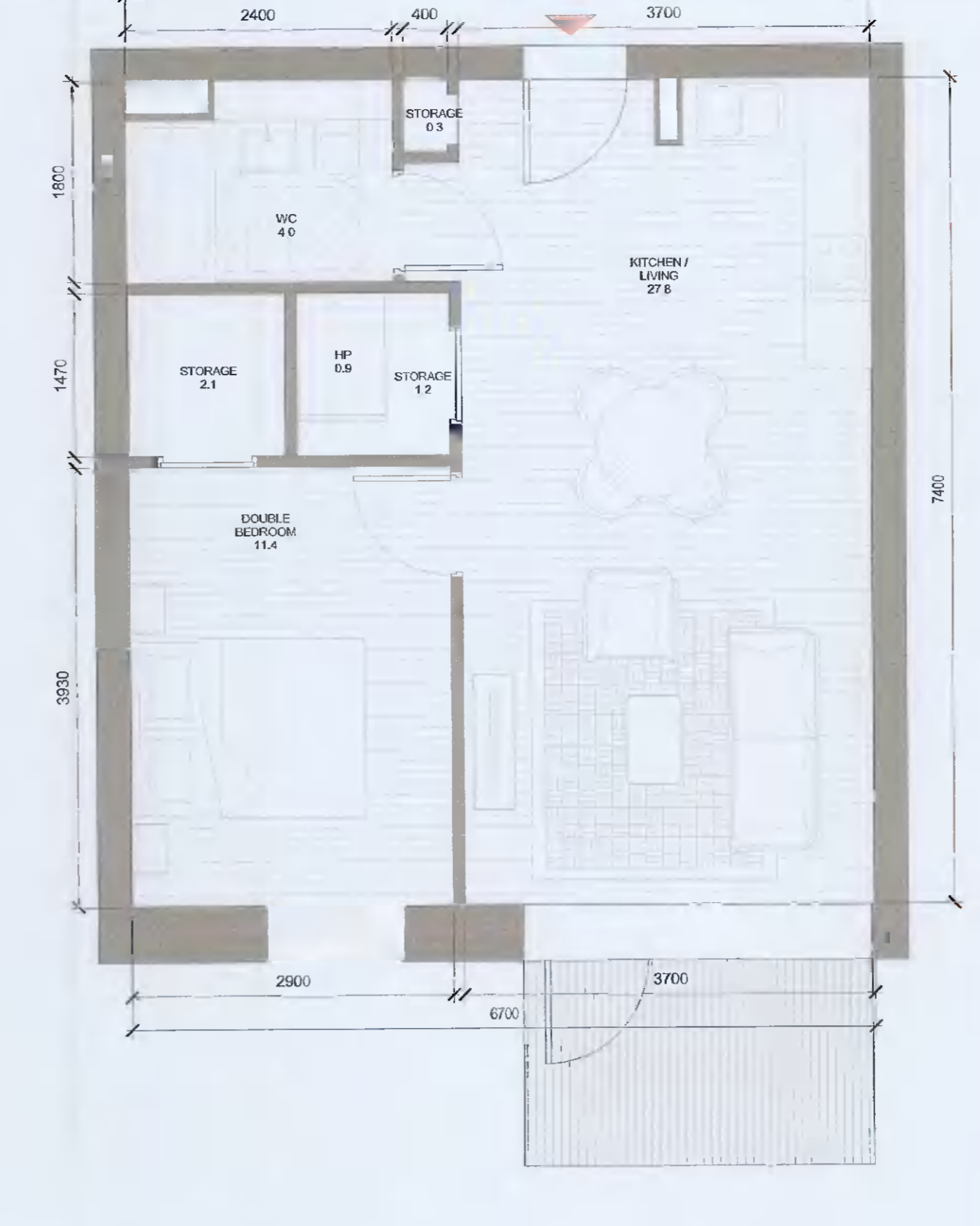
1 T.101_A
1:50

T.101_A SPACE REQUIREMENTS												
Apartment Area	Required Apartment Area	Required Area Met	Kitchen - Living Area	Required Kitchen - Living Area	Required Area Met	Total Bedroom Area	Required Total Bedroom Area	Required Area Met	Total Storage Area	Required Total Storage Area	Required Area Met	Heat Pump Area
45.6 m ²	45.0 m ²	Yes	24.8 m ²	23.0 m ²	Yes	11.4 m ²	11.4 m ²	Yes	3.3 m ²	3.0 m ²	Yes	1.2 m ²



2 T.102_A
1:50

T.102_A SPACE REQUIREMENTS												
Apartment Area	Required Apartment Area	Required Area Met	Kitchen - Living Area	Required Kitchen - Living Area	Required Area Met	Total Bedroom Area	Required Total Bedroom Area	Required Area Met	Total Storage Area	Required Total Storage Area	Required Area Met	Heat Pump Area
46.0 m ²	45.0 m ²	Yes	24.1 m ²	23.0 m ²	Yes	11.4 m ²	11.4 m ²	Yes	3.6 m ²	3.0 m ²	Yes	1.0 m ²

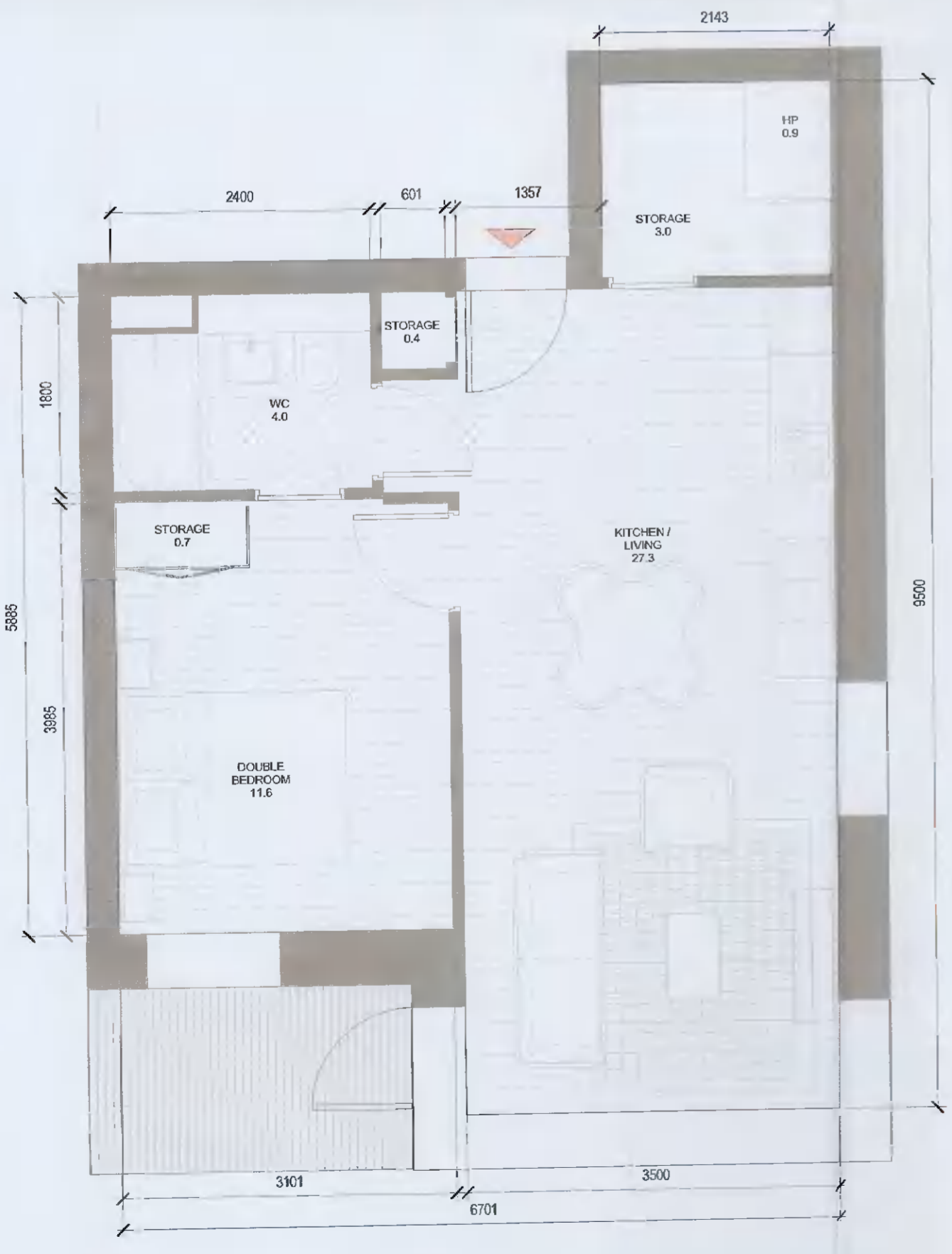


3 T.103_A
1:50

T.103_A SPACE REQUIREMENTS												
Apartment Area	Required Apartment Area	Required Area Met	Kitchen - Living Area	Required Kitchen - Living Area	Required Area Met	Total Bedroom Area	Required Total Bedroom Area	Required Area Met	Total Storage Area	Required Total Storage Area	Required Area Met	Heat Pump Area
46.6 m ²	45.0 m ²	Yes	27.8 m ²	23.0 m ²	Yes	11.5 m ²	11.4 m ²	Yes	3.6 m ²	3.0 m ²	Yes	0.9 m ²

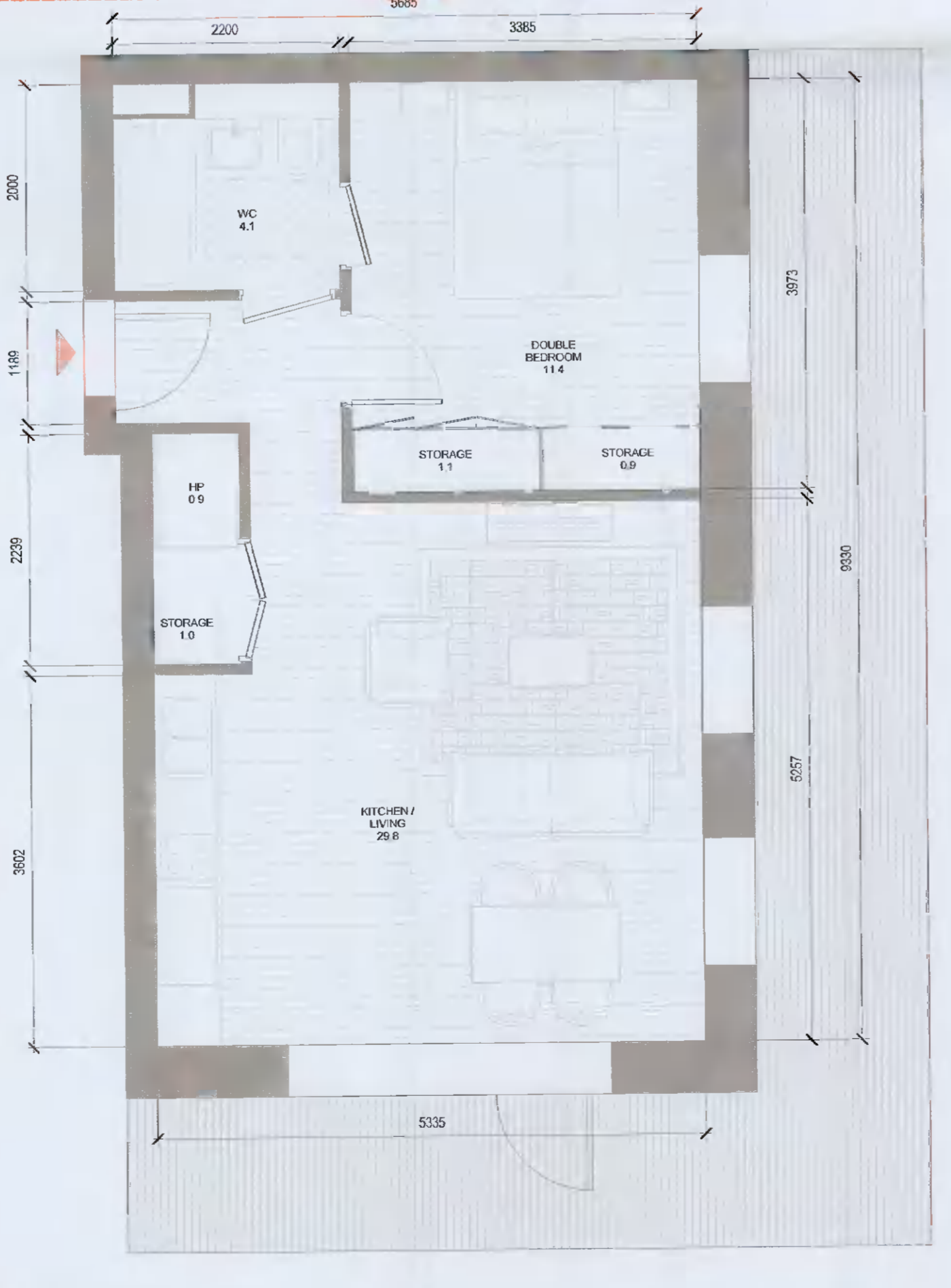
APARTMENTS by TYPE

Count	APARTMENT TYPE		APARTMENT AREA		Bk Name
	Unit Type	Type Name	Area sqm	Min. Area	
6	1B	T.101_A	46.6	45.0	T.101_A
8	1B	T.102_A	46.0	45.0	T.102_A
50	1B	T.103_A	49.6	45.0	T.103_A
1	1B	T.104_A	49.5	45.0	T.104_A
1	1B	T.105_A	50.9	45.0	T.105_A
1	1B	T.106_A	45.9	45.0	T.106_A
1	1B	T.107_A	51.8	45.0	T.107_A
6	1B	T.108_CF	52.9	45.0	T.108_CF
8	1B	T.109_CF	51.1	45.0	T.109_CF
1	1B	T.110_CF	56.1	45.0	T.110_CF
1B: 85					
5	2B-3P	T.201_A	63.9	63.0	T.201_A
5	2B-3P	T.207_A	68.6	63.0	T.207_A
4	2B-3P	T.215_A	63.7	63.0	T.215_A
1	2B-3P	T.216_A	66.6	63.0	T.216_A
2B-3P: 11					
28	2B-4P	T.202_A	80.3	73.0	T.202_A
5	2B-4P	T.203_A	78.1	73.0	T.203_A
3	2B-4P	T.204_A	74.6	73.0	T.204_A
12	2B-4P	T.205_A	74.8	73.0	T.205_A
3	2B-4P	T.206_A	83.2	73.0	T.206_A
8	2B-4P	T.208_A	80.3	73.0	T.208_A
4	2B-4P	T.209_A	81.5	73.0	T.209_A
1	2B-4P	T.210_A	76.8	73.0	T.210_A
6	2B-4P	T.211_A	76.6	73.0	T.211_A
5	2B-4P	T.212_A	82.6	73.0	T.212_A
3	2B-4P	T.213_A	76.7	73.0	T.213_A
4	2B-4P	T.214_A	74.7	73.0	T.214_A
8	2B-4P	T.220_CF	82.8	73.0	T.220_CF
1	2B-4P	T.221_CF	75.8	73.0	T.221_CF
1	2B-4P	T.222_CF	74.7	73.0	T.222_CF
1	2B-4P	T.223_CF	73.0	73.0	T.223_CF
2B-4P: 68					
2	3B	T.301_A	98.8	90.0	T.301_A
3B: 2					
Grand total: 184					



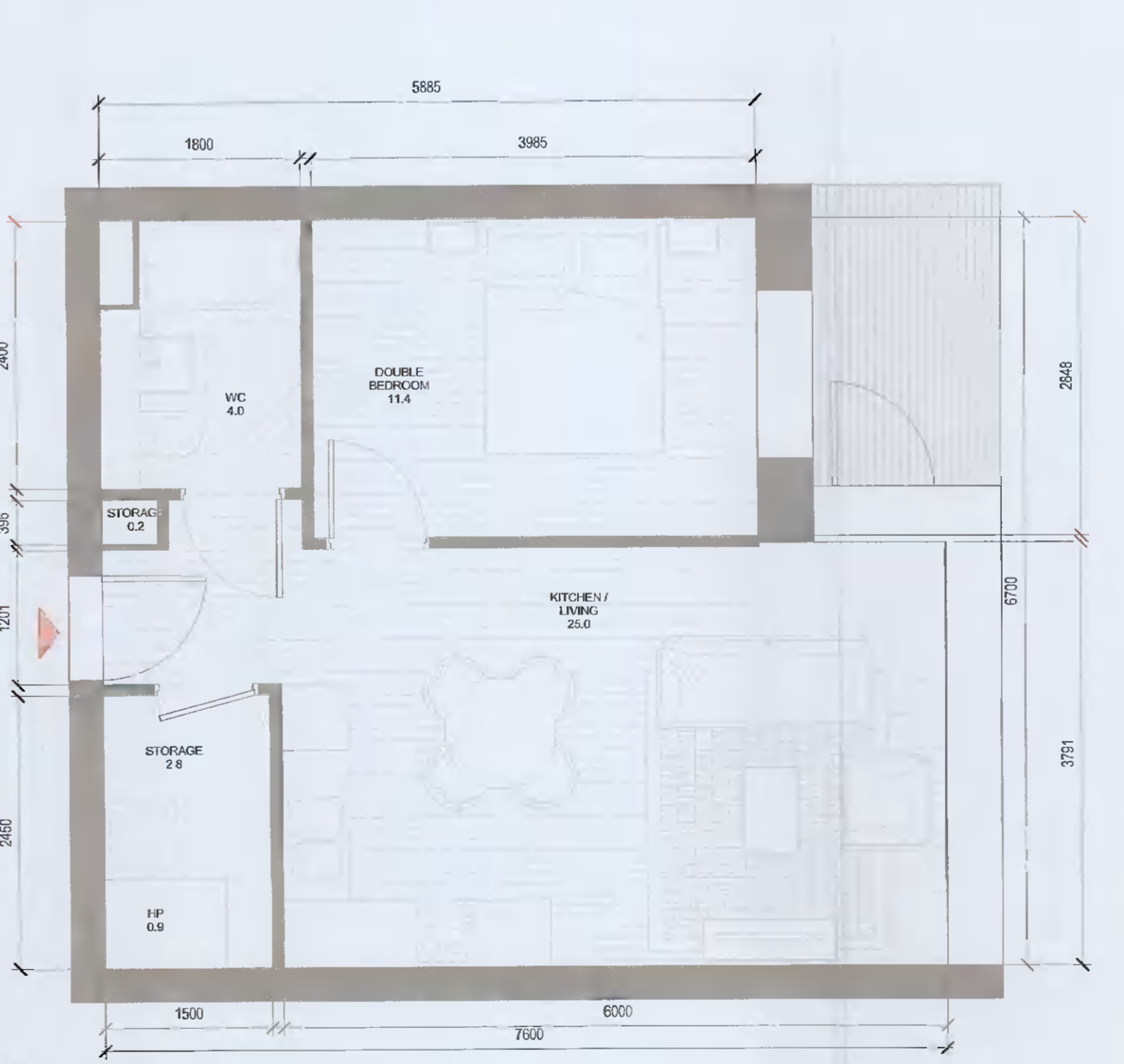
4 T.104_A
1:50

T.104_A SPACE REQUIREMENTS												
Apartment Area	Required Apartment Area	Required Area Met	Kitchen - Living Area	Required Kitchen - Living Area	Required Area Met	Total Bedroom Area	Required Total Bedroom Area	Required Area Met	Total Storage Area	Required Total Storage Area	Required Area Met	Heat Pump Area
48.5 m ²	45.0 m ²	Yes	27.3 m ²	23.0 m ²	Yes	11.6 m ²	11.4 m ²	Yes	4.1 m ²	3.0 m ²	Yes	0.9 m ²



5 T.105_A
1:50

T.105_A SPACE REQUIREMENTS												
Apartment Area	Required Apartment Area	Required Area Met	Kitchen - Living Area	Required Kitchen - Living Area	Required Area Met	Total Bedroom Area	Required Total Bedroom Area	Required Area Met	Total Storage Area	Required Total Storage Area	Required Area Met	Heat Pump Area
50.9 m ²	45.0 m ²	Yes	29.8 m ²	23.0 m ²	Yes	11.4 m ²	11.4 m ²	Yes	3.0 m ²	3.0 m ²	Yes	0.9 m ²



6 T.106_A
1:50

T.106_A SPACE REQUIREMENTS												
Apartment Area	Required Apartment Area	Required Area Met	Kitchen - Living Area	Required Kitchen - Living Area	Required Area Met	Total Bedroom Area	Required Total Bedroom Area	Required Area Met	Total Storage Area	Required Total Storage Area	Required Area Met	Heat Pump Area
45.9 m ²	45.0 m ²	Yes	25.0 m ²	23.0 m ²	Yes	11.4 m ²	11.4 m ²	Yes	3.0 m ²	3.0 m ²	Yes	0.9 m ²

H/L Drawing Number on previously lodged planning application (SDZ21A/0007)
ADC-H/L-G-ZZ-DR-A-8001 Revision (P02)

Red dashed line indicates extent of amendments to proposal from previous planning application SDZ21A/0007

REV	DATE	DESCRIPTION	CHK	DRN
P03	11/02/2021	ISSUED FOR PLANNING APPROVAL	RJ	SH
P02	13/06/2021	ISSUED FOR FURTHER INFORMATION	DB	EA
P01	13/04/2021	ISSUED FOR PLANNING APPROVAL	RJ	EA

STATUS CODE DESCRIPTION
ISSUED FOR PLANNING APPROVAL

CLIENT
QUINTAIN IRELAND LTD.

PROJECT
ADAMSTOWN STATION BLOCK G

DRAWING
1 BED APARTMENT TYPES SHEET 1

PROJECT NUMBER
950749

DATE
13/06/21

SCALE@ A1:
As Indicated

DRAWN/CHECKED:
RL/DB

STATUS CODE: A1
DRAWING NUMBER: ADC-H/L-G-ZZ-DR-A-8001
REVISION: P03

Henry J Lyons

Architecture + Interiors
henryjlyons.com
+353 1 888 3333
info@henryjlyons.com
51-54 Pearse Street
Dublin D02 KA66