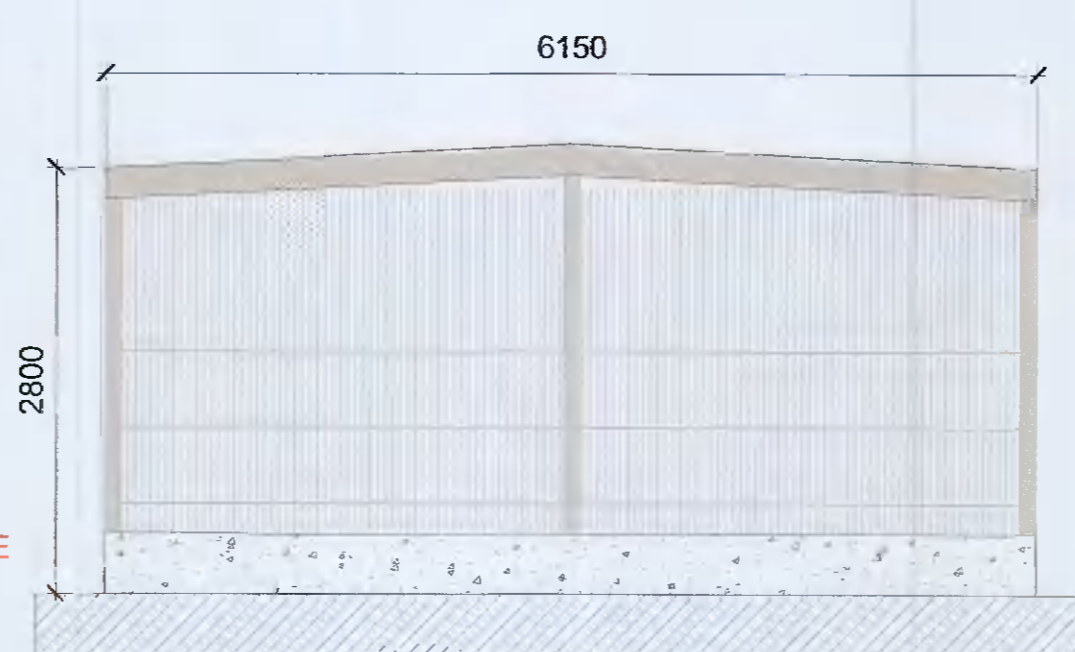


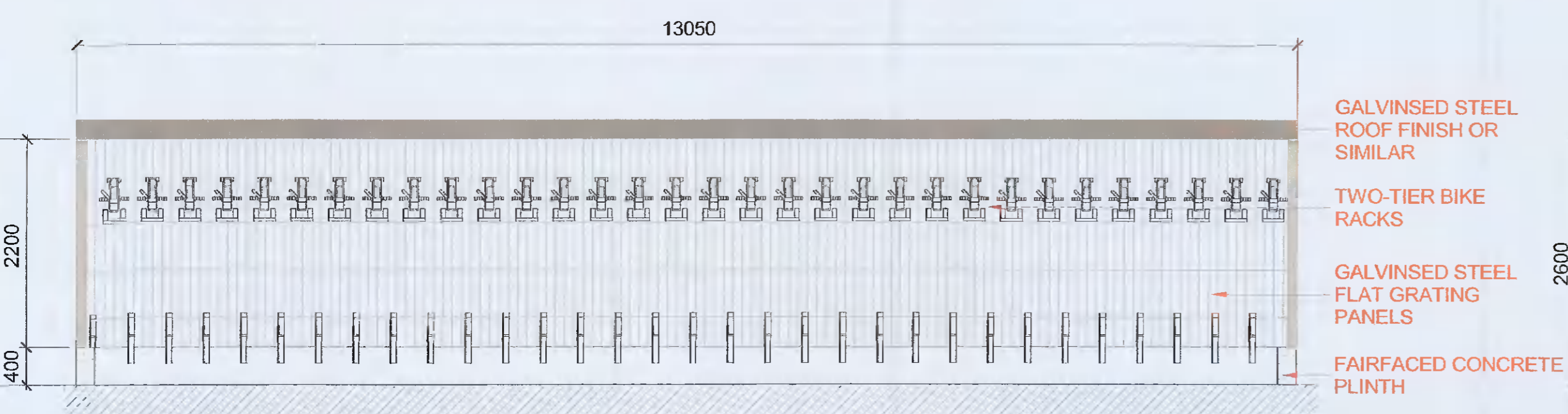


1 BIKE STORE 01 ELEVATION
1:50

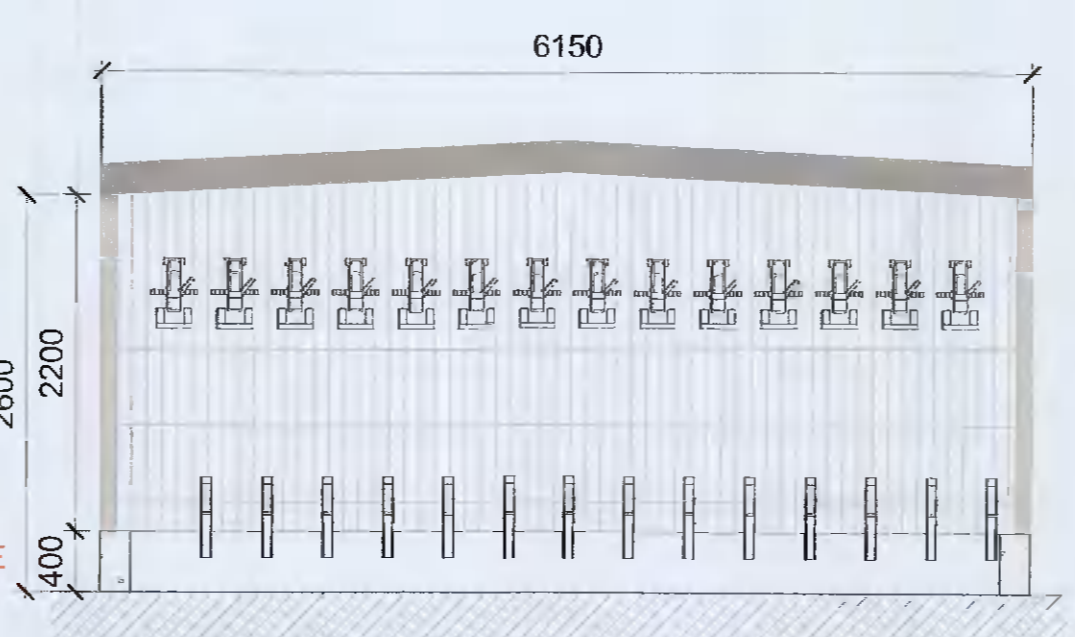


4 BIKE STORE 02 ELEVATION
1:50

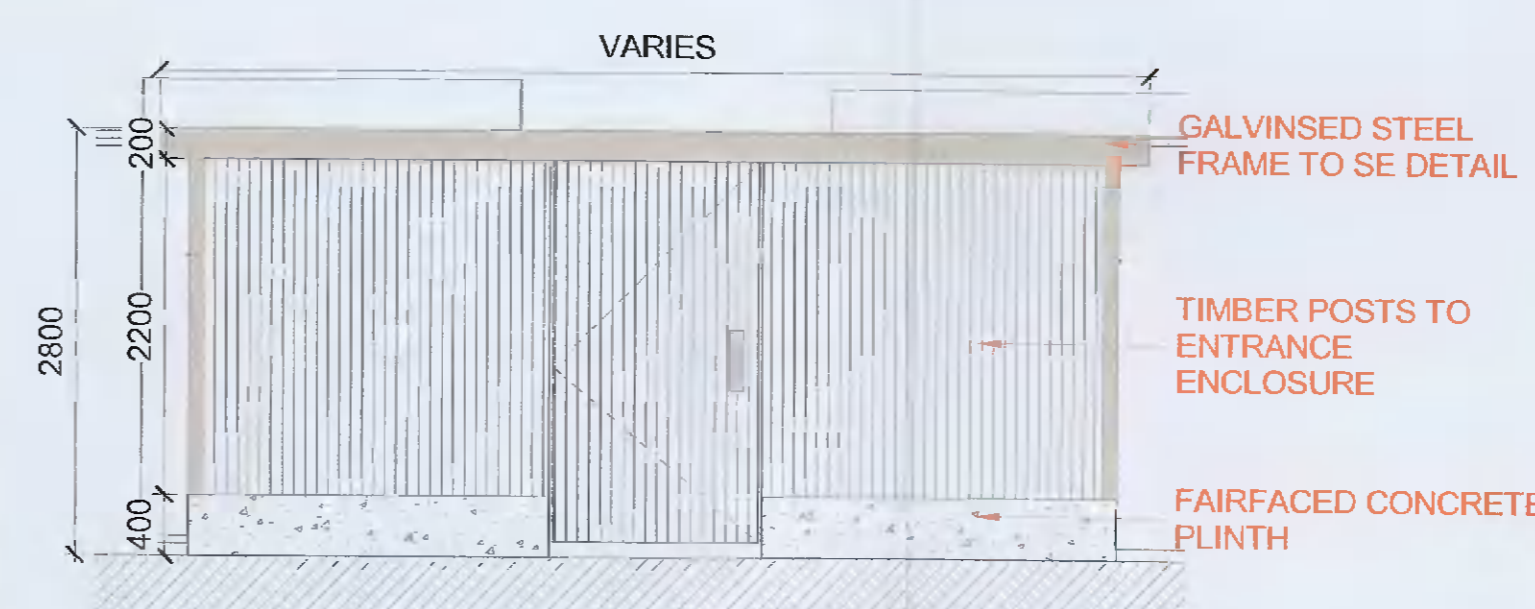
REFERENCE IMAGE - BIKE ENCLOSURE



2 BIKE STORE 01 SECTION
1:50



5 BIKE STORE 02 SECTION
1:50



7 BIKE STORE TYPICAL ENTRANCE ELEVATION
1:50

Red dashed line indicates extent of amendments to proposal from previous planning application SDZ21A/0007

REV	DATE	DESCRIPTION	CHK	DRN
P03	11/10/2021	ISSUED FOR PLANNING APPROVAL	RJ	SH
P02				
P01				

STATUS CODE DESCRIPTION
ISSUED FOR PLANNING APPROVAL

CLIENT
QUINTAIN IRELAND LTD.

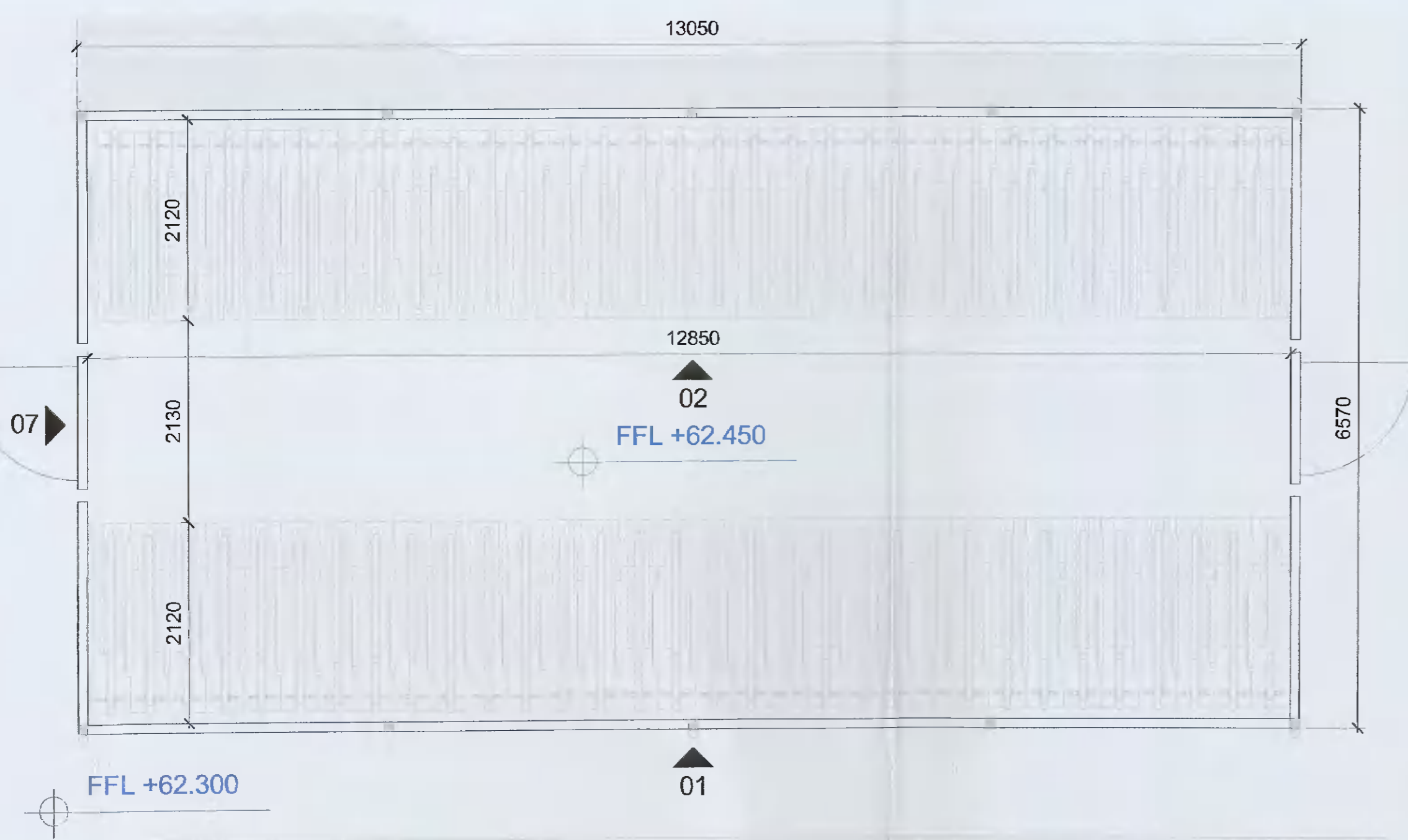
PROJECT
ADAMSTOWN STATION BLOCK G

DRAWING
BLOCK G BICYCLE PARKING ENCLOSURES

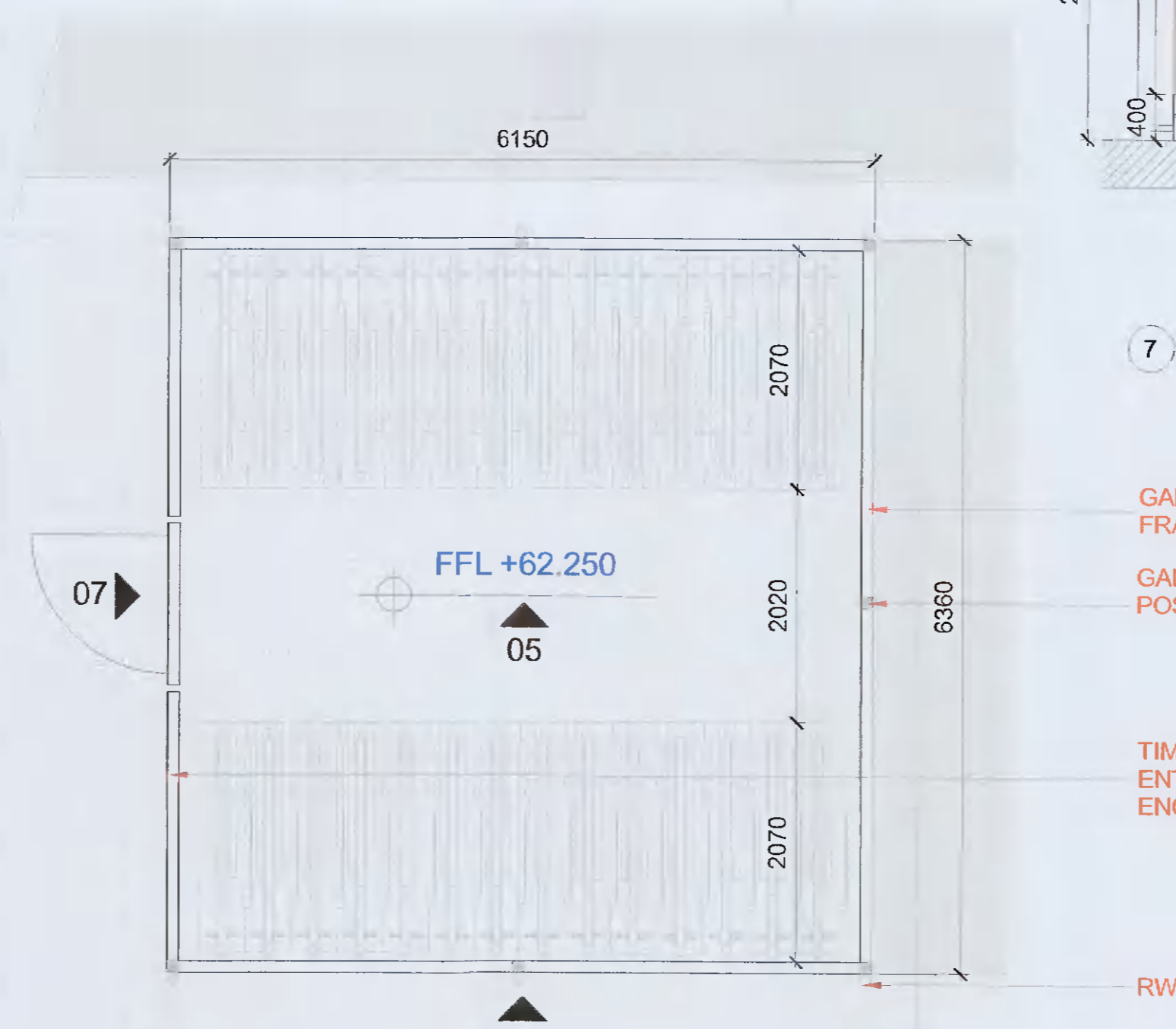
PROJECT NUMBER	DATE	
960749	11/10/21	
SCALE@ A1:	DRAWN/CHECKED:	
As Indicated	SEN/RJ	
STATUS CODE:	DRAWING NUMBER	REVISION
A1	ADC-HJL-G-ZZ-DR-A-6300	P03

Henry J Lyons

Architecture + Interiors
 henryjlyons.com +353 1 886 3333 info@henryjlyons.com 51-54 Pearse Street Dublin D02 K466



3 BIKE STORE 01 PLAN
1:50



6 BIKE STORE 02 PLAN
1:50

GALVINSED STEEL FRAME TO SE DETAIL
 GALVINSED STEEL POSTS TO SE DETAIL

TIMBER POSTS TO ENTRANCE ENCLOSURE

RWP