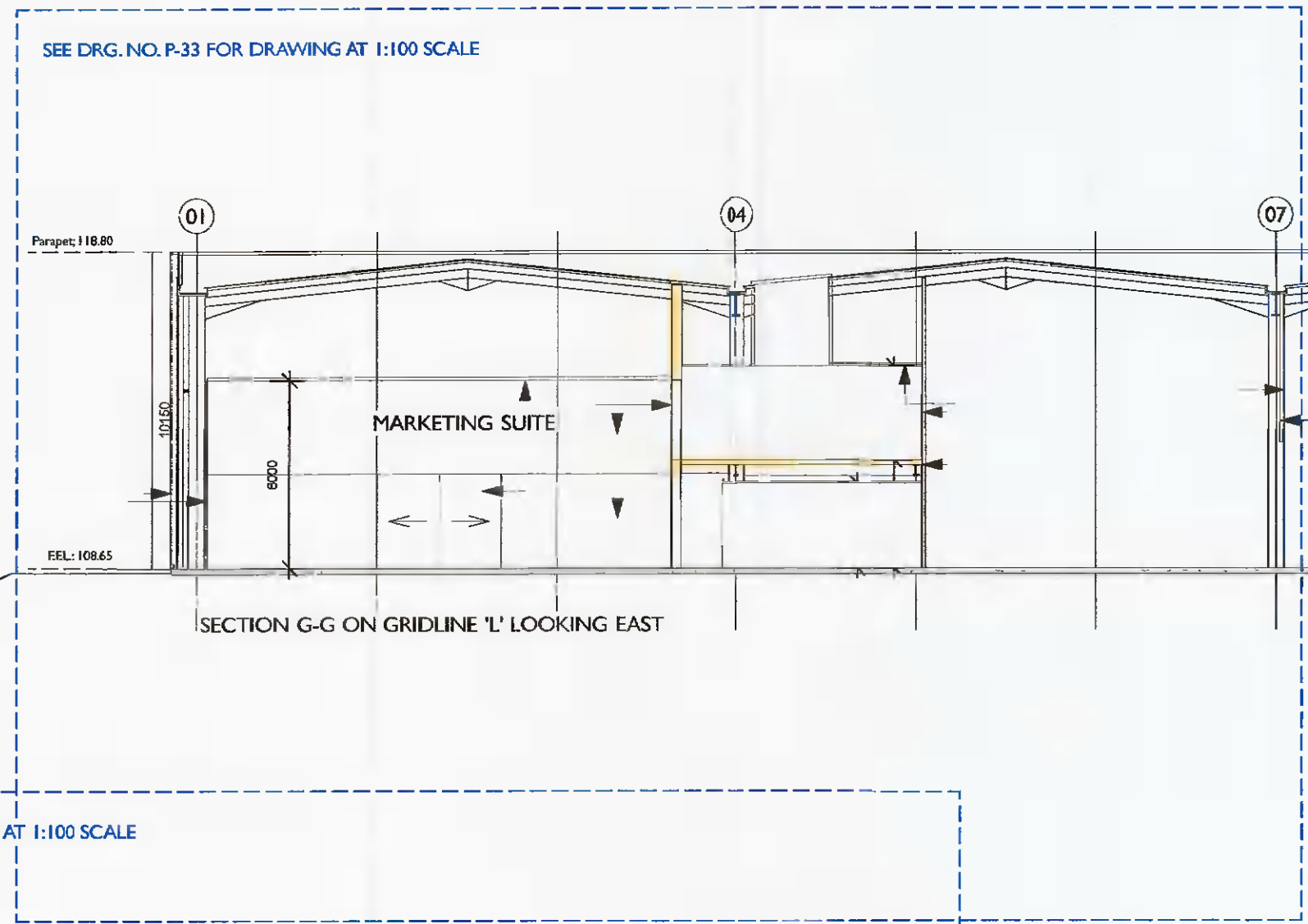
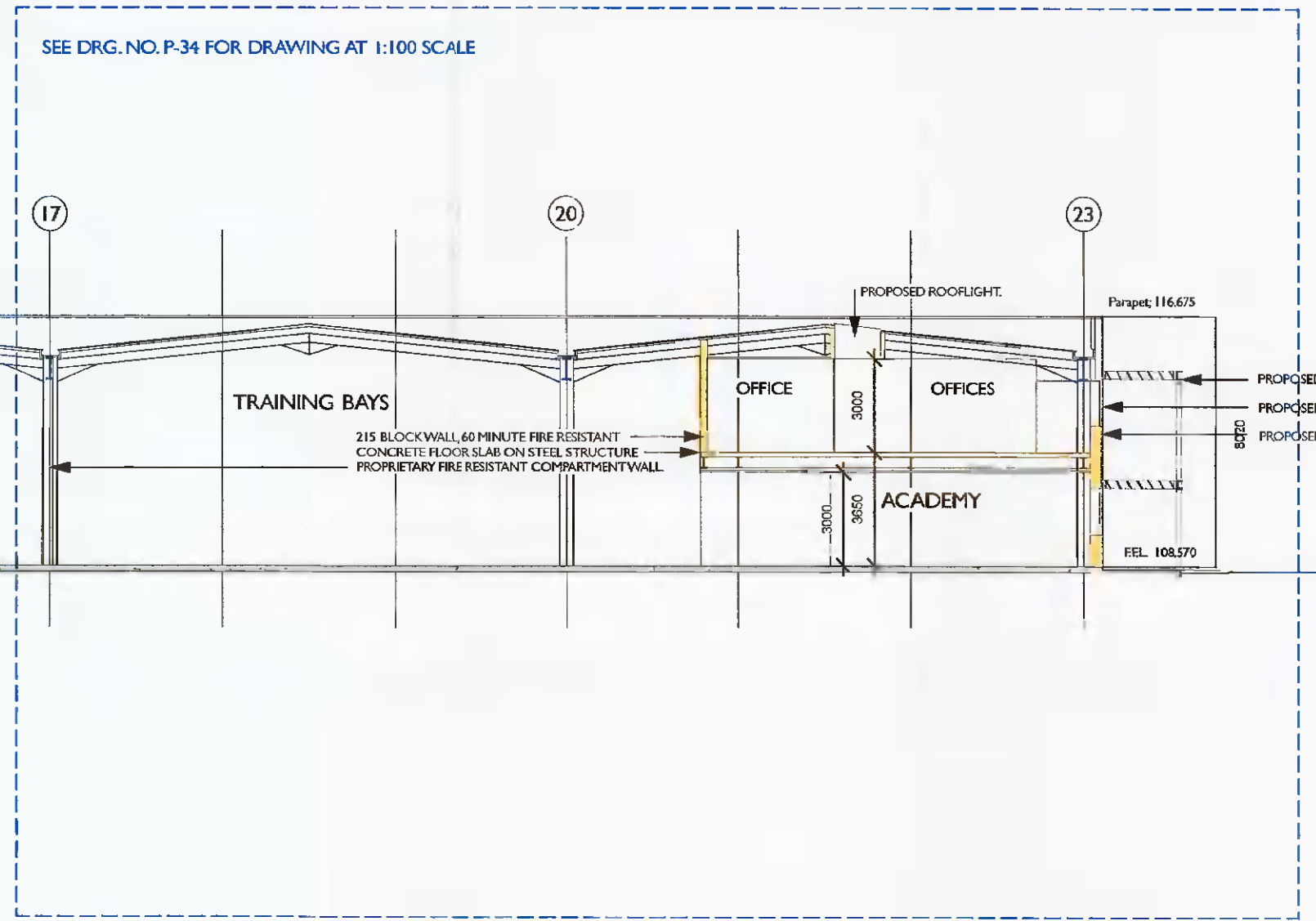


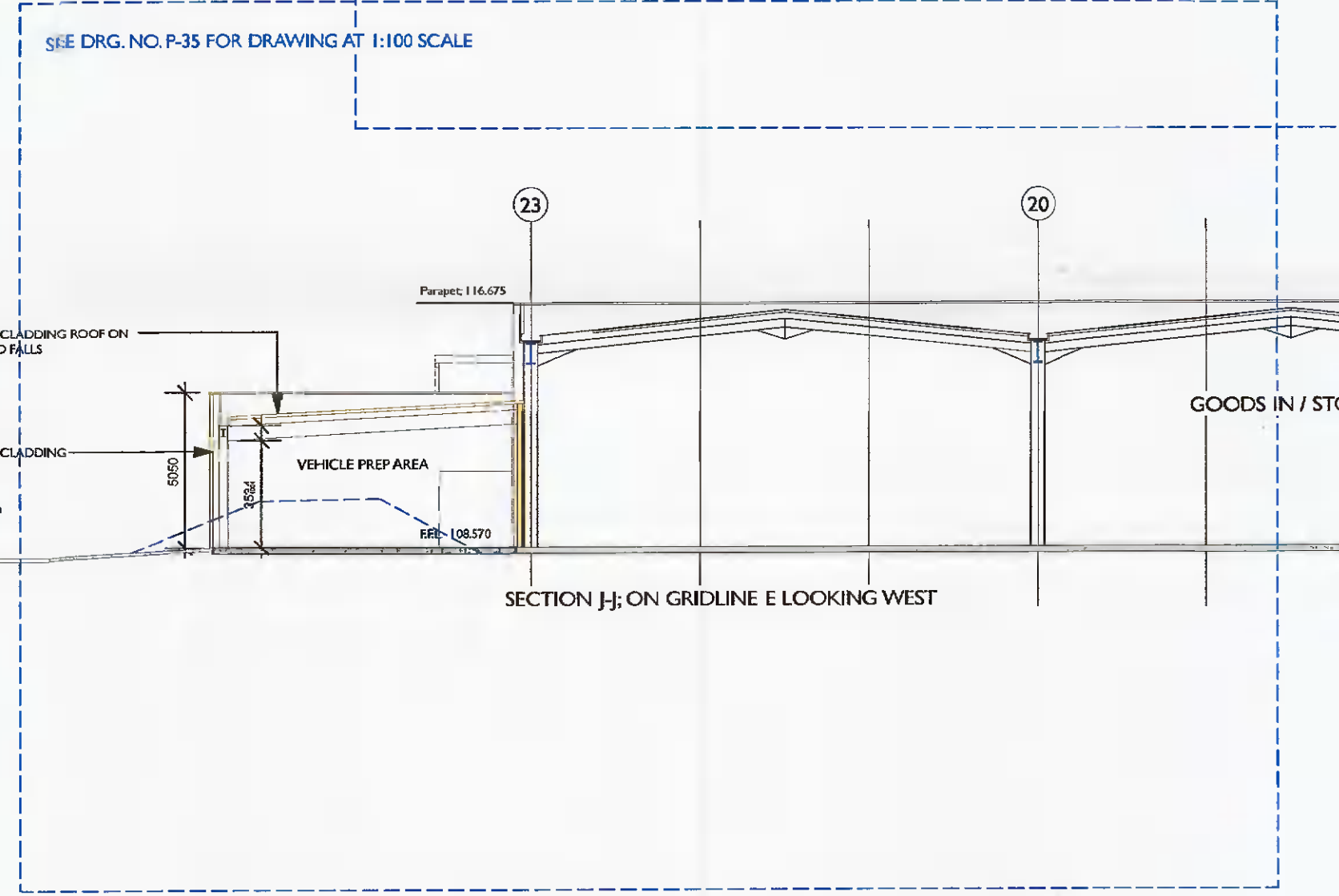
SECTION F-F ON GRID LINE 17 LOOKING SOUTH



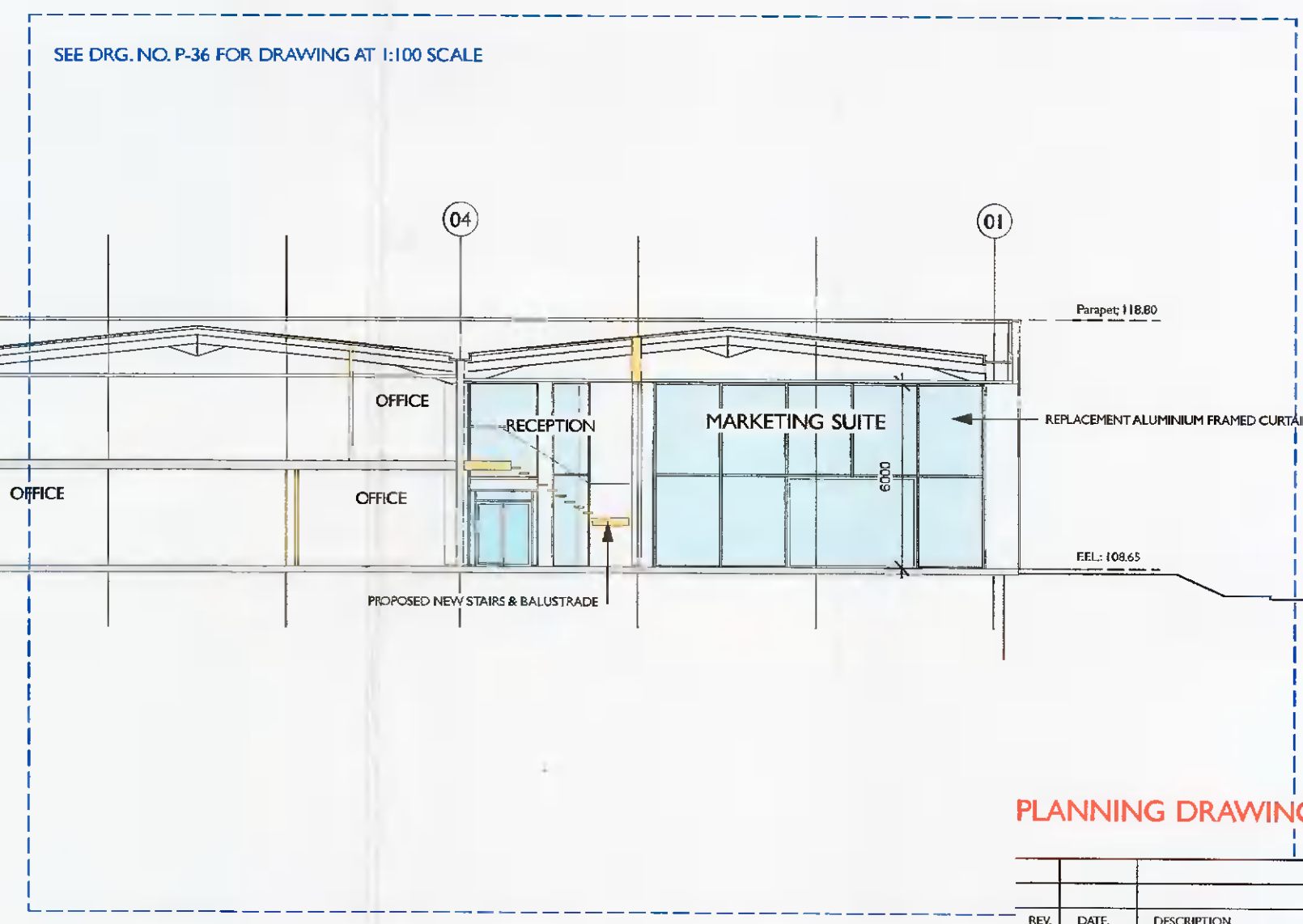
SECTION G-G ON GRIDLINE 'L' LOOKING EAST



SEE DRG. NO. P-34 FOR DRAWING AT 1:100 SCALE



SECTION J-J ON GRIDLINE E LOOKING WEST



SECTION K-K ON GRIDLINE 'L' LOOKING EAST

PLANNING DRAWING - 16/08/2021

REV	DATE	DESCRIPTION
PROJECT REDEVELOPMENT & ALTERATIONS TO UNIT 2007/2008 ORCHARD AVE., CITY WEST.		
TITLE PLANNING DRAWING; SECTIONS F-F, G-G, J-J & K-K		
CLIENT GOWAN GROUP		
EMD Architects 107 Ludford Road, Ballsbridge, Dublin 16, Ireland p. +353 1 2989948 f. +353 1 2962011 e. info@emdarchitects.com		
SCALE	DATE	DRG. No.
1:200@A1	July 2021	P - 07