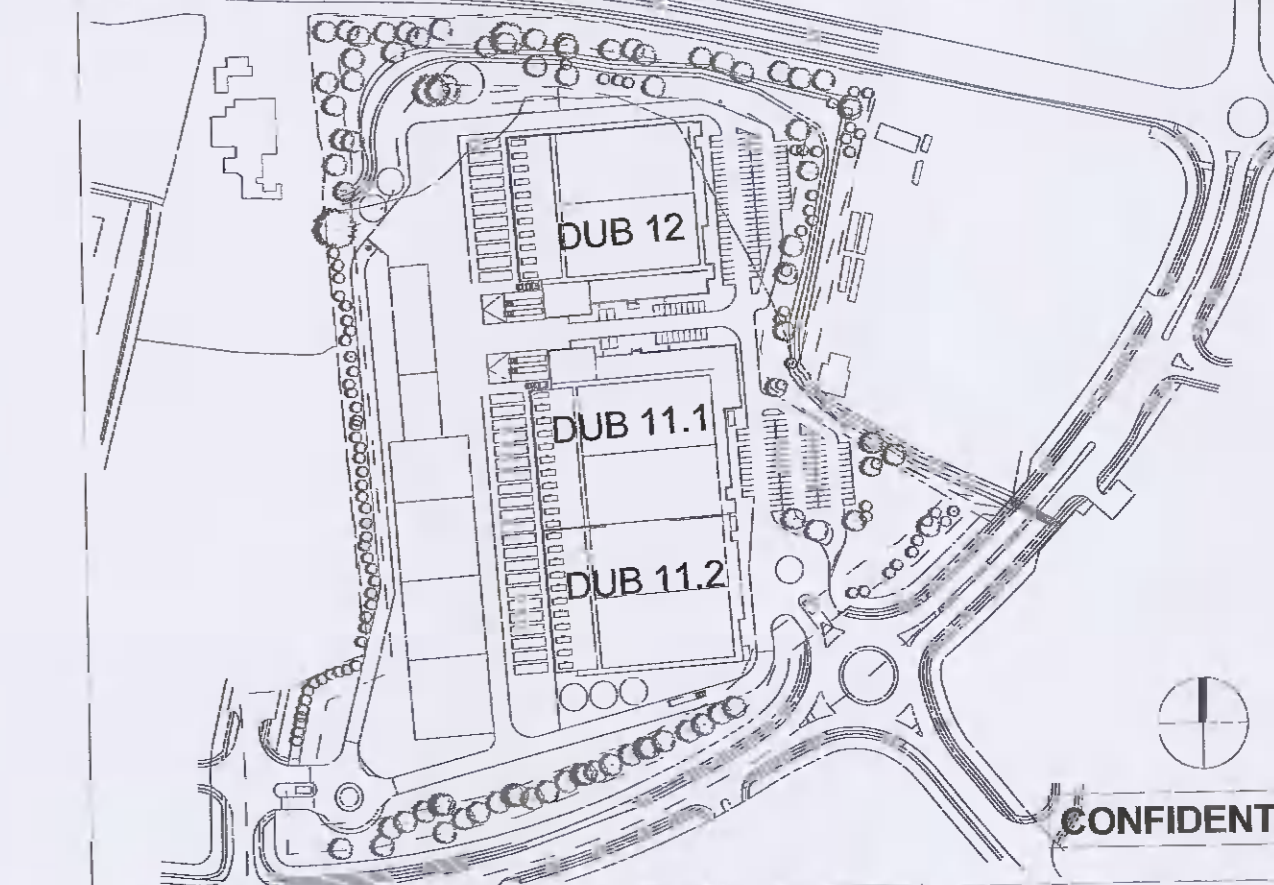


**LEGEND**

	EXISTING WATERMAIN		AIR VALVE AS PER IRISH WATER STANDARD DETAIL STD-W-20/22
	PROPOSED HDPE, PE100, SDR17 WATERMAIN		SCOUR VALVE AS PER IRISH WATER STANDARD DETAIL STD-W-30/30A
	PROPOSED RETAINING WALL		SCOUR VALVE CHAMBER AS PER IRISH WATER STANDARD DETAIL STD-W-30
	PROPOSED FFL		HYDRANTS AS PER IRISH WATER STANDARD DETAIL STD-W-16/18
	PROPOSED LEVEL		WASH OUT HYDRANT CHAMBER AS PER IRISH WATER STANDARD STD-W-30A
	EXISTING LEVEL		METER CHAMBER AS PER IRISH WATER STANDARD DETAIL STD-W-16/15
	PROPOSED GRADIENT		
	SLUCE VALVES AS PER IRISH WATER STANDARD DETAIL STD-W-14/15		
	SITE BOUNDARY		

- WATERMAIN NOTES:**
- ALL WATERMAINS VALVES AND FITTINGS SHALL BE CONSTRUCTED IN ACCORDANCE WITH THE IRISH WATER STANDARD DETAILS AND IRISH WATER CODE OF PRACTICE FOR WATER INFRASTRUCTURE.
  - ALL WATERMAINS SHALL BE HDPE, PE100, SDR17 TO IS EN 12201 PART 2:2011 AND IS EN 12201-3:2011.
  - CONNECTION BETWEEN EXISTING AND PROPOSED WATERMAINS TO BE CARRIED OUT IN ACCORDANCE WITH IRISH WATER STANDARD DETAILS STD-W-03 TO STD-W-10.
  - ANCHOR BLOCKS TO BE POSITIONED AT DEAD ENDS, TEES, BENDS AND AT EACH SIDE OF HYDRANTS AND VALVES IN ACCORDANCE WITH THE REQUIREMENTS OF IRISH WATER STANDARD DETAIL STD-W-28 (WATER MAIN THRUST AND SUPPORT BLOCKS DISMANTLING JOINTS TO BE INSTALLED AT EACH SLUCE VALVE AS PER IRISH WATER STANDARD DETAIL STD-W-15).
  - CONNECTION TO INDIVIDUAL HOUSES IN ACCORDANCE WITH IRISH WATER STD-W-03.
  - INSTALLATION OF SLUCE VALVES, AIR VALVES AND HYDRANTS SHALL BE IN ACCORDANCE WITH IRISH WATER'S STANDARD DETAILS STD-W-14 TO STD-W-23.
  - MARKER POSTS AND PLATES ARE TO BE PROVIDED IN ACCORDANCE WITH IRISH WATER STANDARD DETAIL STD-W-27.
  - CONNECTION TO INDIVIDUAL HOUSES IN ACCORDANCE WITH IRISH WATER STD-W-03.
  - CONNECTION TO EXISTING WATERMAINS TO BE COORDINATED BY THE CONTRACTOR WITH IRISH WATER AND/OR THE LOCAL AUTHORITY.
  - CONTRACTOR TO LIASE WITH IRISH WATER AND / OR THE LOCAL AUTHORITY AS REQUIRED REGARDING TESTING, CLEANSING AND STERILISATION OF WATERMAINS.
  - WATERMAINS TO BE PRESSURE TESTED IN ACCORDANCE WITH THE REQUIREMENTS OF IRISH WATER AND IEN L-01-03, GUIDE TO TESTING OF PRESSURE PIPES AND FITTINGS FOR USE BY PUBLIC WATER SUPPLIERS, OCTOBER 2015. A FINAL TEST REPORT SHALL BE SUBMITTED TO THE ENGINEER DETAILING THE TEST CARRIED OUT.

1/1	16/08/21	F.A.R.	J.M.	Site layout updated
1/2	22/07/21	A.B.B.	J.M.	Work Stage 3 Rev VO
Rev	Rev. Date	Drawn By	Checked By	Description



Client: **VANTAGE DATA CENTERS**

Structural engineer company:  
 Engineer's Name:  
 Signature:  
 Date:

Planning Application Checker Name:  
 Signature:  
 Date:

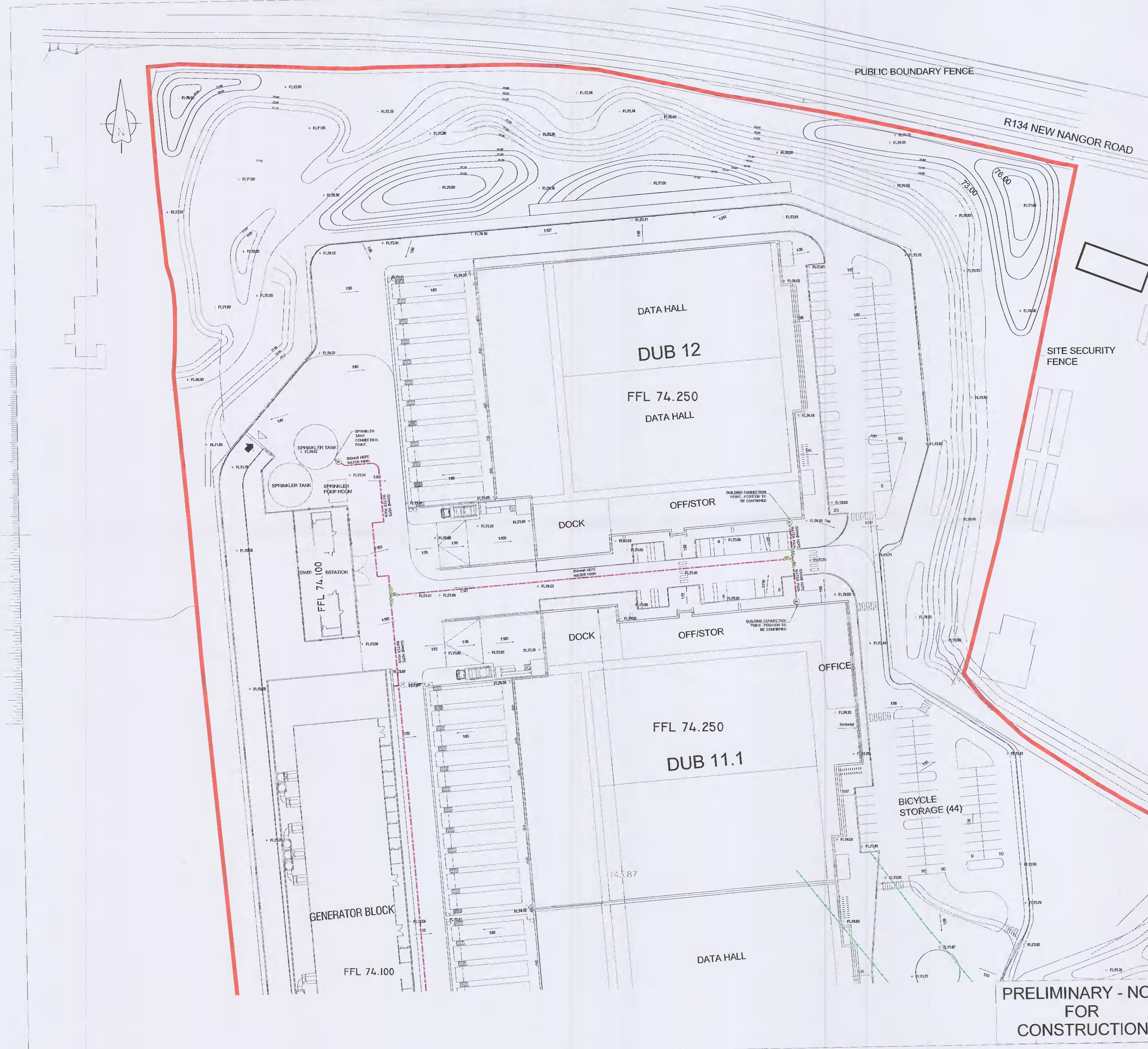
Signature Architect Company:  
**Hyphen**  
 Signature Architect Name:  
 Signature:  
 Date:

BM coordinator: Approved by: Checked by: Drawn by:  
 JM SO'R F JVR

Project address:  
**DUBLIN IRELAND**  
 53° 19' 1.40"N 6° 26' 40.80"W

Drawing title:  
**PROPOSED SITE LEVELS AND WATERMAIN SHEET 1 OF 2**

Format / Size:	Scale:	Status:	Date:	Sheet number:	Rev:
A1 560/541	1:500		07/23/21	DUB11.1-DR-SP-C122-V1-WS3-PIN	V1



Millimeters  
 Scale for Microminim  
 Inches