



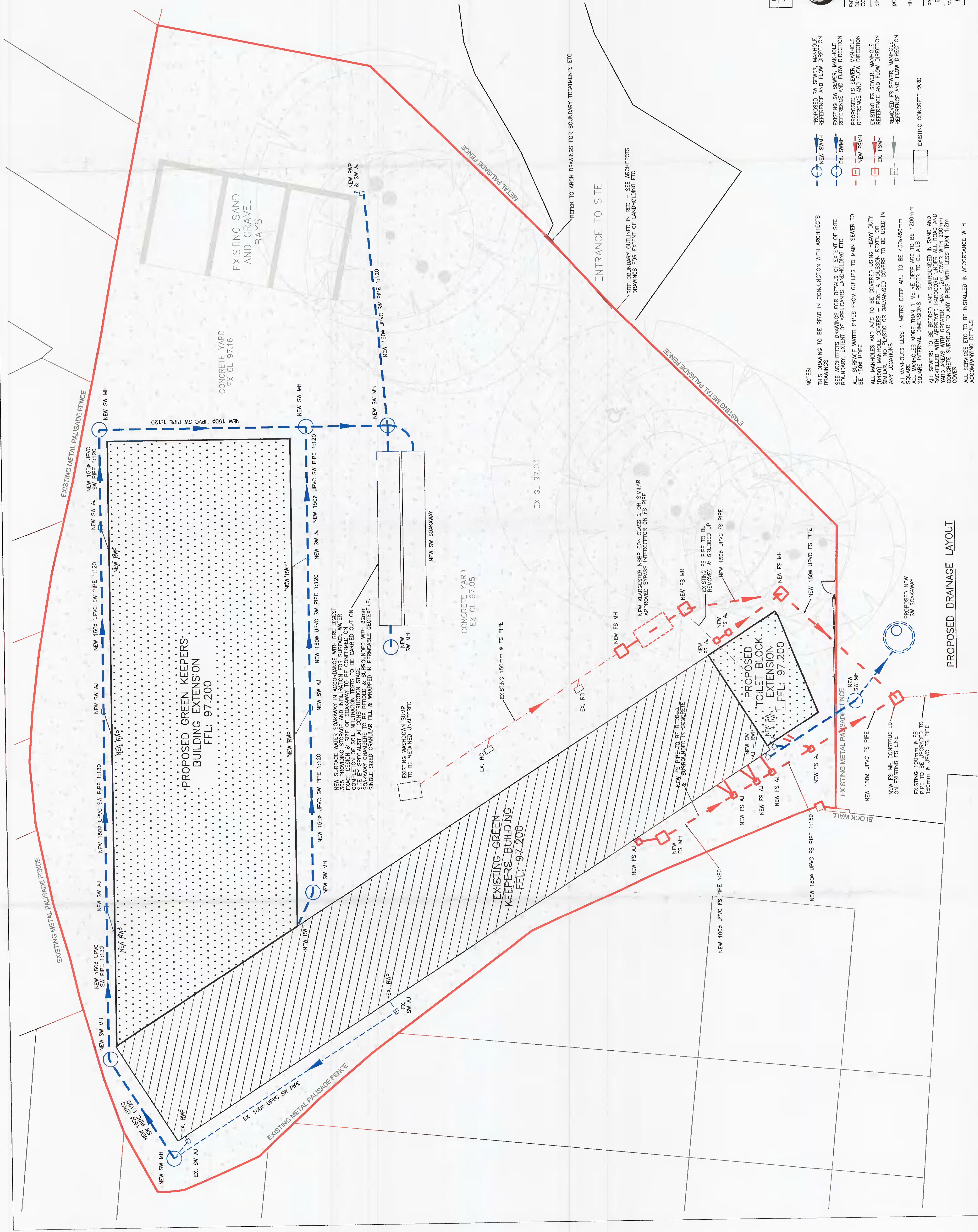
P1	REV	PLANNING APPLICATION	AUG21
		amendments	date

**ALAN CLARKE & ASSOCIATES**  
 CONSULTING CIVIL & STRUCTURAL ENGINEERS  
 PROJECT MANAGERS  
 P: 0035742071  
 F: 0035744646  
 CO. MONAGHAN  
 E: H@ALANCLARKE.COM

CLIENT: EDMONSTOWN GOLF CLUB CLG  
 PROJECT: GREEN KEEPERS BUILDING EXTENSION  
 FILE: PROPOSED DRAINAGE LAYOUT  
 ARCHITECT: ENCL ARCHITECTS  
 DATE: AUG21 21158  
 SCALE: 1:100  
 DRAWING NO: 21158-500  
 REV: P1

- PROPOSED SW SEWER MANHOLE REFERENCE AND FLOW DIRECTION
- EX. SWMH REFERENCE AND FLOW DIRECTION
- PROPOSED FS SEWER MANHOLE REFERENCE AND FLOW DIRECTION
- EX. FSMH REFERENCE AND FLOW DIRECTION
- PROPOSED CONCRETE YARD

NOTES:  
 THIS DRAWING TO BE READ IN CONJUNCTION WITH ARCHITECTS DRAWINGS  
 SEE ARCHITECTS DRAWINGS FOR DETAILS OF EXTENT OF SITE BOUNDARY, EXTENT OF APPLICANTS LAND-HOLDING ETC  
 ALL SURFACE WATER PIPES FROM GULLIES TO MAIN SEWER TO BE 150ø PIPE  
 ALL MANHOLES AND A/S TO BE COVERED USING HEAVY DUTY (C40) MANHOLE COVERS POINT TO COVER OR GULLY COVERS TO BE USED IN ANY LOCATIONS  
 ALL MANHOLES LESS 1 METRE DEEP ARE TO BE 450x450mm  
 ALL MANHOLES MORE THAN 1 METRE DEEP ARE TO BE 1200mm SQUARE INTERNAL DIMENSIONS - REFER TO DETAILS  
 ALL SEWERS TO BE BEDDED AND SURROUNDED IN SAND AND BACKFILLED WITH APPROVED HARDCORE UNDER ALL ROAD AND YARD AREAS WITH GREATER THAN 1.2m COVER WITH 200mm CONCRETE SURROUNDED TO ANY PIPES WITH LESS THAN 1.2m COVER  
 ALL SERVICES ETC TO BE INSTALLED IN ACCORDANCE WITH ACCOMPANYING DETAILS



PROPOSED DRAINAGE LAYOUT