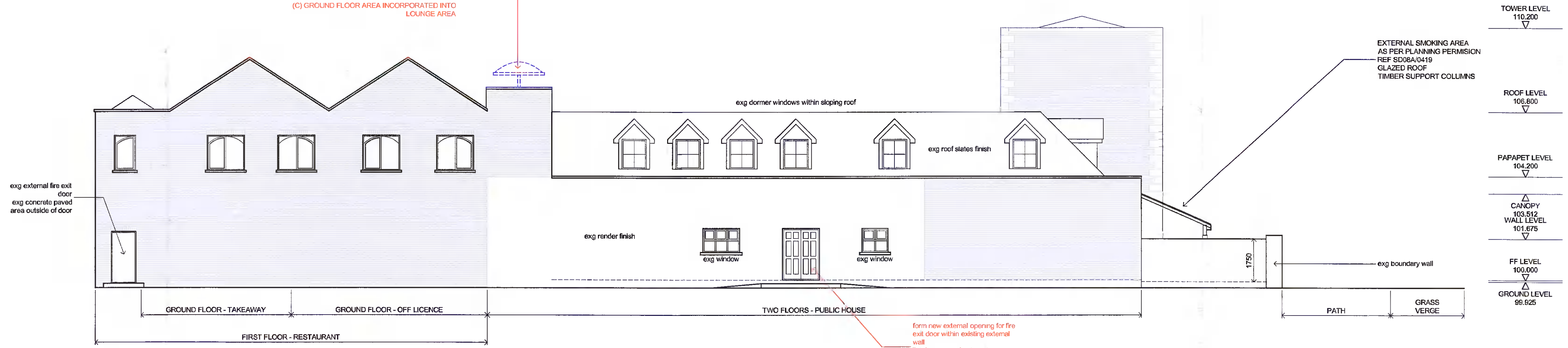


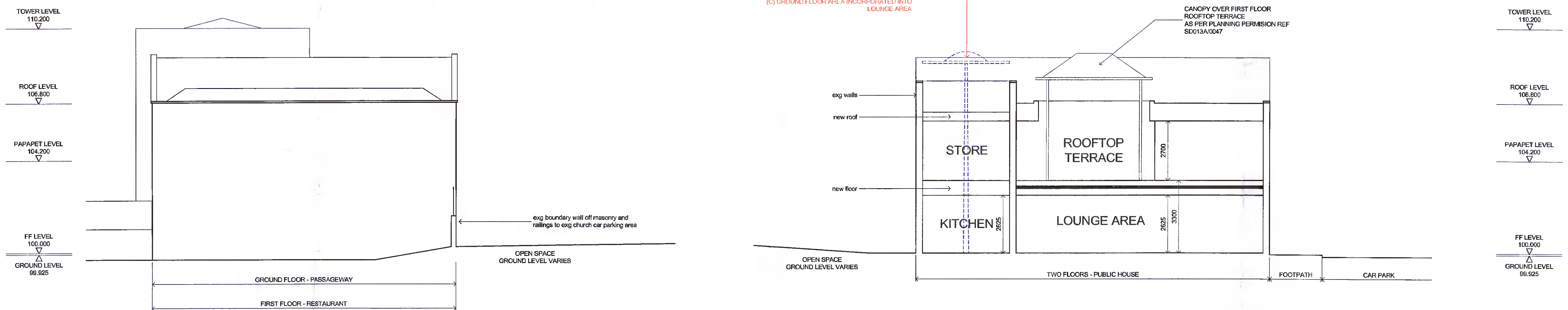
PLANNING PERMISSION FOR RETENTION SOUGHT FOR: (1) THE REMOVAL OF THE GROUND FLOOR INTERNAL COURTYARD WITH CANOPY OVER AS PER PLANNING REF. SD013A/0047. WORKS TO INCLUDE: (A) EXTERNAL CANOPY ABOVE ROOF LEVEL REMOVED (B) NEW STORAGE ROOM CREATED AT FIRST FLOOR LEVEL (C) GROUND FLOOR AREA INCORPORATED INTO LOUNGE AREA PLANNING PERMISSION SOUGHT FOR: (2) REDUCTION IN SIZE OF LOUNGE FLOOR AREA. WORKS TO INCLUDE: (A) NEW ENTRANCE DOORS TO LOUNGE AREA WITHIN BUILDING ELEVATION FACING CAR PARK (B) NEW EXTERNAL FIRE EXIT DOOR FROM LOUNGE AREA TO OPEN SPACE TO REAR OF THE BUILDING (C) INTERNAL WALLS FORMING SNUG DEMOLISHED COMPLETE. FLOOR AREA INCLUDED WITHIN LOUNGE AREA (3) KITCHEN EXTENSION WITHIN PART OF PREVIOUS LOUNGE AREA (4) RELOCATION OF OFF LICENCE INTO PREVIOUS LOUNGE AREA. ENTRANCE DOORS TO OFF LICENCE ARE PREVIOUS ENTRANCE DOORS TO LOUNGE AREA. WORKS TO INCLUDE: (A) NEW WINDOW TO OFF LICENCE WITHIN BUILDING ELEVATION FACING CAR PARK (B) CHANGE OF USE OF PREVIOUS OFF LICENCE TO TAKEAWAY (6) INTERNAL LAYOUT CHANGES TO LOUNGE AREA PUBLIC TOILETS (7) REMOVE INTERNAL DOORS BETWEEN LOUNGE AREA AND ENTRANCE

PLANNING PERMISSION FOR RETENTION SOUGHT FOR: (1) THE REMOVAL OF THE GROUND FLOOR INTERNAL COURTYARD WITH CANOPY OVER AS PER PLANNING REF. SD013A/0047. WORKS TO INCLUDE: (A) EXTERNAL CANOPY ABOVE ROOF LEVEL REMOVED (B) NEW STORAGE ROOM CREATED AT FIRST FLOOR LEVEL (C) GROUND FLOOR AREA INCORPORATED INTO LOUNGE AREA



ELEVATION TO OPEN SPACE AS PROPOSED

PLANNING PERMISSION FOR RETENTION SOUGHT FOR: (1) THE REMOVAL OF THE GROUND FLOOR INTERNAL COURTYARD WITH CANOPY OVER AS PER PLANNING REF. SD013A/0047. WORKS TO INCLUDE: (A) EXTERNAL CANOPY ABOVE ROOF LEVEL REMOVED (B) NEW STORAGE ROOM CREATED AT FIRST FLOOR LEVEL (C) GROUND FLOOR AREA INCORPORATED INTO LOUNGE AREA



ELEVATION TO CHURCH CAR PARK NO CHANGES

TYPICAL SECTION

AS PROPOSED

AS PROPOSED	ORDNANCE SURVEY PLAN REF MAP SERIES: 1:1000 MAP SHEETS: 3326-05, 3327-01 ITM CENTRE POINT CO-ORDINATE X,Y = 707966, 731577	PLANNING PERMISSION FOR RETENTION SOUGHT FOR: (1) THE REMOVAL OF THE GROUND FLOOR INTERNAL COURTYARD WITH CANOPY OVER AS PER PLANNING REF. SD013A/0047. WORKS TO INCLUDE: (A) EXTERNAL CANOPY ABOVE ROOF LEVEL REMOVED (B) NEW STORAGE ROOM CREATED AT FIRST FLOOR LEVEL (C) GROUND FLOOR AREA INCORPORATED INTO LOUNGE AREA PLANNING PERMISSION SOUGHT FOR: (2) REDUCTION IN SIZE OF LOUNGE FLOOR AREA. WORKS TO INCLUDE: (A) NEW ENTRANCE DOORS TO LOUNGE AREA WITHIN BUILDING ELEVATION FACING CAR PARK (B) NEW EXTERNAL FIRE EXIT DOOR FROM LOUNGE AREA TO OPEN SPACE TO REAR OF THE BUILDING (C) INTERNAL WALLS FORMING SNUG DEMOLISHED COMPLETE. FLOOR AREA INCLUDED WITHIN LOUNGE AREA (3) KITCHEN EXTENSION WITHIN PART OF PREVIOUS LOUNGE AREA (4) RELOCATION OF OFF LICENCE INTO PREVIOUS LOUNGE AREA. ENTRANCE DOORS TO OFF LICENCE ARE PREVIOUS ENTRANCE DOORS TO LOUNGE AREA. WORKS TO INCLUDE: (A) NEW WINDOW TO OFF LICENCE WITHIN BUILDING ELEVATION FACING CAR PARK (B) CHANGE OF USE OF PREVIOUS OFF LICENCE TO TAKEAWAY (6) INTERNAL LAYOUT CHANGES TO LOUNGE AREA PUBLIC TOILETS (7) REMOVE INTERNAL DOORS BETWEEN LOUNGE AREA AND ENTRANCE AT BOOMERS PUBLIC HOUSE, KNOCKMITTEN NEIGHBOURHOOD CENTRE, DUTCH VILLAGE, CLONDALKIN, DUBLIN 22 FOR HONEYBRIDGE LTD	PLANNING APPLICATION DRAWING		SM APS STEPHEN MASON ARCHITECTURAL AND PLANNING SERVICES 2 CLONKEEVEY, CASTLERAHAN, BALLYJAMESDUFF, CO CAVAN TEL - 087 746 4003
			SCALE 1 TO 100	DATE JUNE 2021	