

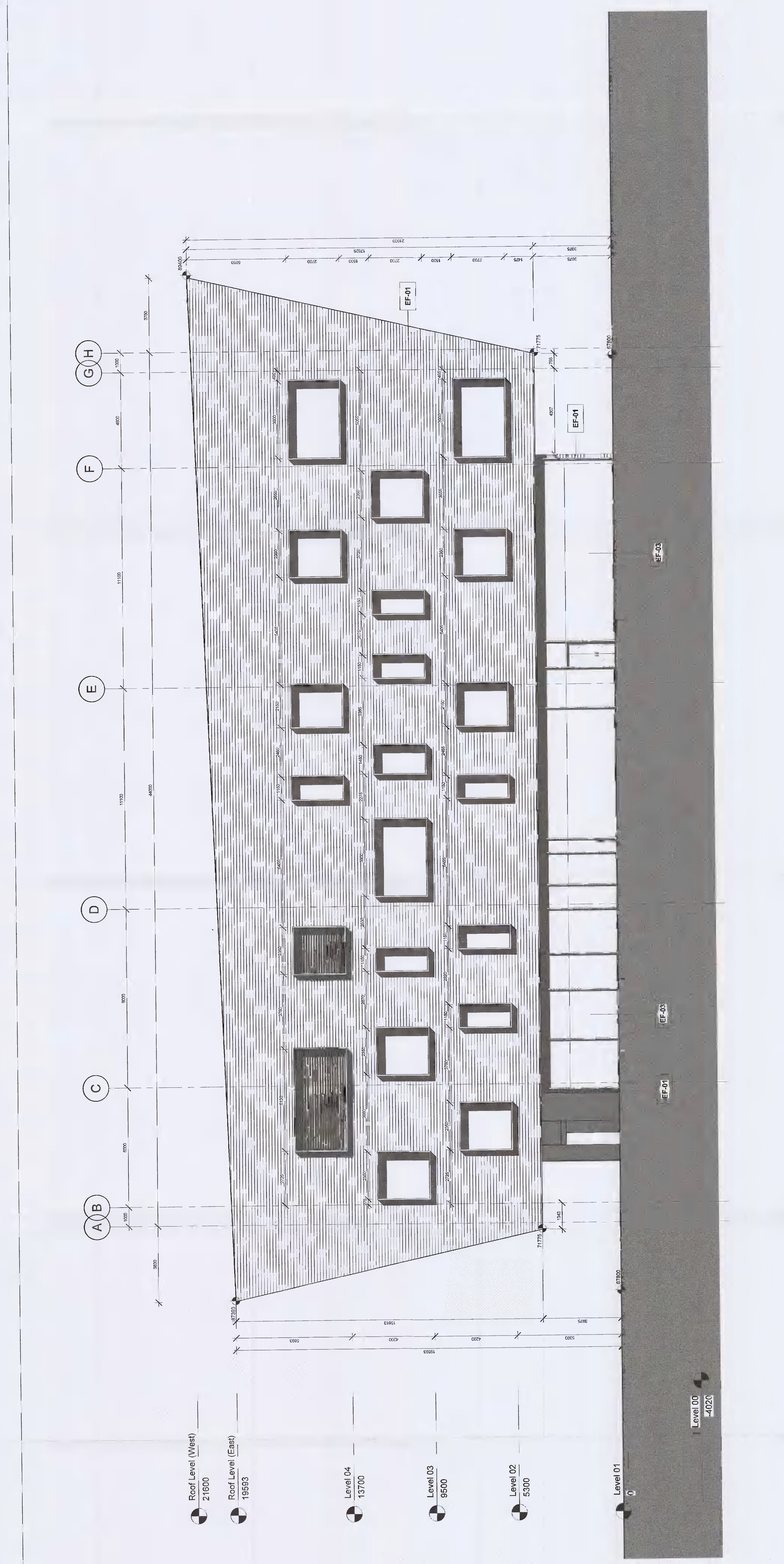
General Notes:
 1. This is not an installation drawing and shows an elevation of the building facade. All dimensions are in millimeters (mm) unless noted otherwise. All levels are in metres (m) unless noted otherwise.
 2. Do not scale, work to figured dimensions only. The drawing shall be read in conjunction with the contract documents, including but not limited to, contract documents, specifications, and other documents. Contractor selected equipment shall meet the given constraints and long lead equipment will be ordered 12 weeks in advance of the start of the equipment section.
 3. All services provided by the contractor shall be installed to accommodate the movements as indicated in the contract documents. All services shall be installed to accommodate the movements as indicated in the contract documents.
 4. The Contractor will provide fully coordinated approval for all services as indicated in the contract documents.
 5. All services shall be installed as indicated in the contract documents.
 6. All services shall be installed as indicated in the contract documents.
 7. The Contractor will provide fully coordinated approval for all services as indicated in the contract documents.
 8. In accordance for approval.

LEGEND
 EF1: Fixed glass curtain wall system with fixed glass, selected glazing.
 EF2: Fixed glass curtain wall system with fixed glass, selected glazing with anodized aluminum frame and double glazing unit.
 EF3: Fixed glass curtain wall system with fixed glass, selected glazing with anodized aluminum frame and double glazing unit with acoustic insulation.
 EF4: Fixed glass curtain wall system with fixed glass, selected glazing with anodized aluminum frame and double glazing unit with acoustic insulation and glass-to-glass sealant.
 EF5: Fixed glass curtain wall system with fixed glass, selected glazing with anodized aluminum frame and double glazing unit with acoustic insulation and glass-to-glass sealant and weatherstripping.
 EF6: Fixed glass curtain wall system with fixed glass, selected glazing with anodized aluminum frame and double glazing unit with acoustic insulation and glass-to-glass sealant and weatherstripping and thermal break.
 EF7: Fixed glass curtain wall system with fixed glass, selected glazing with anodized aluminum frame and double glazing unit with acoustic insulation and glass-to-glass sealant and weatherstripping and thermal break and thermal break.
 EF8: Fixed glass curtain wall system with fixed glass, selected glazing with anodized aluminum frame and double glazing unit with acoustic insulation and glass-to-glass sealant and weatherstripping and thermal break and thermal break and thermal break.
 EF9: Fixed glass curtain wall system with fixed glass, selected glazing with anodized aluminum frame and double glazing unit with acoustic insulation and glass-to-glass sealant and weatherstripping and thermal break and thermal break and thermal break and thermal break.
 EF10: Fixed glass curtain wall system with fixed glass, selected glazing with anodized aluminum frame and double glazing unit with acoustic insulation and glass-to-glass sealant and weatherstripping and thermal break and thermal break and thermal break and thermal break and thermal break.

P02: 25/05/21 | Issued for Planning
 P01: 21/05/21 | Issued for 30%
 Date: 11/21/2021
 Revision: Revision 01

ARUP **Microsoft**
DONNELLY TURPIN ARCHITECTS
 400 Capital Circle, Suite 2000, Tallahassee, FL 32301
 Tel: 904.437.8000
 Fax: 904.437.8001
 www.donnelyturpin.com

Client: Microsoft Operations Ireland Ltd, South County Business Park, One Microsoft Court, Camrathall and Leopardstown, Dublin, D18 DB1X
 Project: Microsoft Office, Dublin, D18 DB1X
 Drawing: 2085
 Title: Proposed Elevation - Planning
 Scale: 1:100
 Date: 11/21/2021
 Drawing No: A1303



1 ELEVATION 04 North
 1:100

2 KEYPLAN
 1:500