

- General Notes:**
- This is not an installation drawing and shows
  - All dimensions are in millimetres (mm) unless noted otherwise. All levels are in metres (m) unless noted otherwise.
  - Do not scale work to figure dimensions only. All dimensions are taken from the relevant building services documents and other relevant documents.
  - Contract documents details are not manufacturer specific. Contractor selected equipment shall meet the requirements of the contract documents and be approved by the CO, based on the equipment selection.
  - Equipment selection through the fire rated compartments shall be fire escaped to achieve a rating equivalent to the compartment and shall be approved by the CO, based on the equipment selection.
  - All services crossing the movement joints shall be defined in the structural engineers' contract documentation.
  - Contractor shall produce fully approved installation drawings prior to installation for approval.
  - Contractor will produce as built drawings prior to handover for approval.

**LEGEND**

- EF1 Powder coated aluminium cladding aluminium system, selected dark grey
- EF2 Fine Concrete masonry cladding system with select stone finish
- EF3 Frameless glazing system with anodised aluminium frame and double glazing units
- EF4 Facade glazing system with anodised aluminium frame and glass panels with a dark grey to black tint
- EF5 Frameless glazing system with frameless structural glazing
- EF6 Powder coated aluminium framed curtain wall and window panels
- EF7 Embossed anodised aluminium louvre system
- EF8 Pre-painted and labeled anodised for aluminium panel, colour to match cladding
- EF9 Powder coated aluminium metal ceiling, colour to match cladding
- EF10 External Powder Coat Area: Selected painting suits over 2 layer polyester modified bituminous membrane roof
- EF11 External Powder Coat Area: Selected painting suits over 2 layer polyester modified bituminous membrane roof
- EF12 External Powder Coat Area: Selected painting suits over 2 layer polyester modified bituminous membrane roof
- EF13 PV Panels
- EF14 Curtain Wall: Green roof with extensive sedum roof system

P02 25/09/21 Issued for Planning  
 P01 21/05/21 Issued for 30%  
 Title: Information  
 Date: 11/05/21

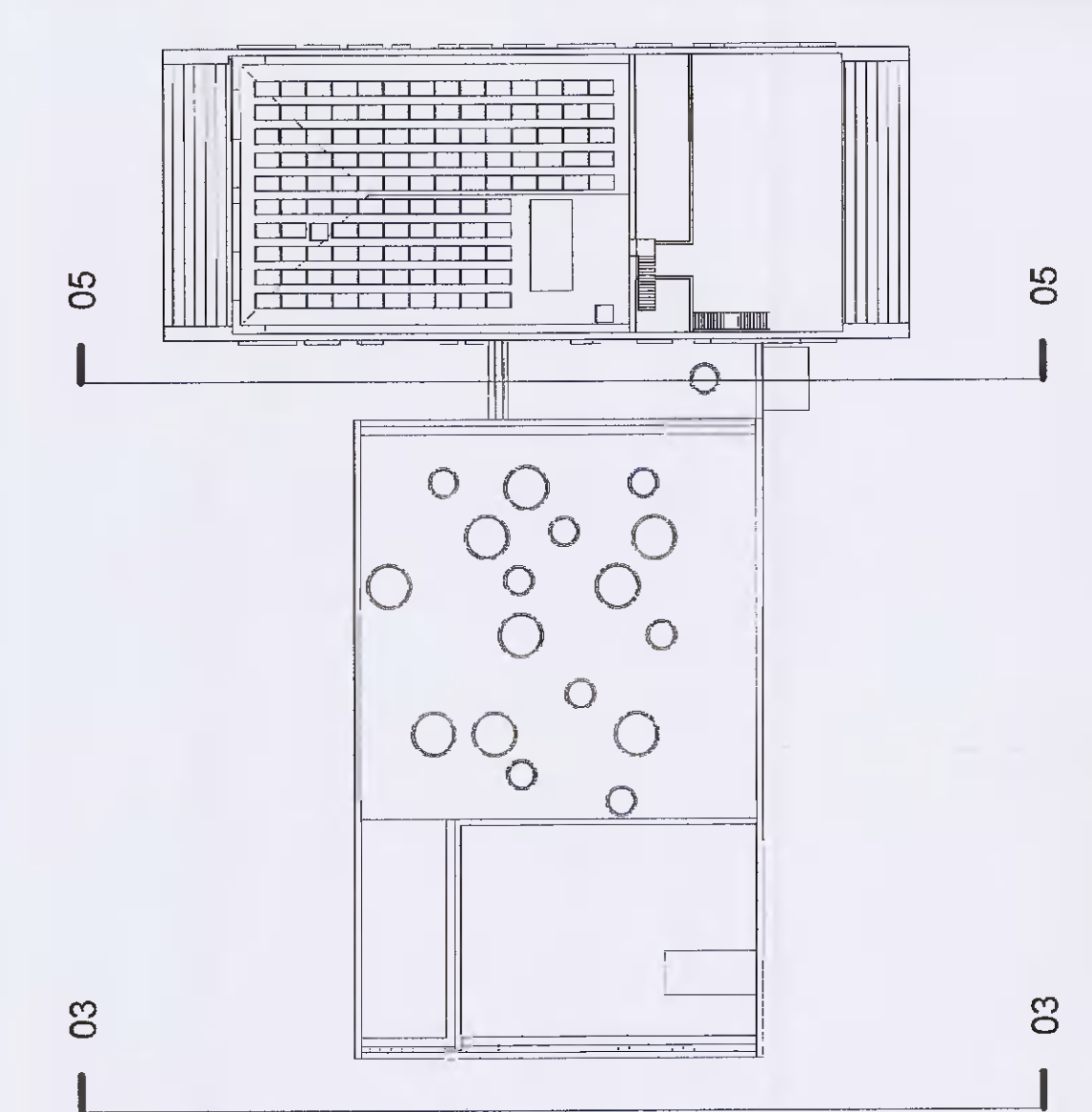
**ARUP** **Microsoft**  
**DONNELLY TURPIN ARCHITECTS**  
 55 Carlton Street Lower, Dublin, D02 CR8  
 Tel: +353 1 452 2200  
 Email: info@donnellyturpin.com

Microsoft Operations Ireland Ltd South County  
 Business Park, One Microsoft Place, Communal  
 Floor 7th  
 DUB 14115  
 Modifications to Previously Approved  
 Scheme: S2020A0283

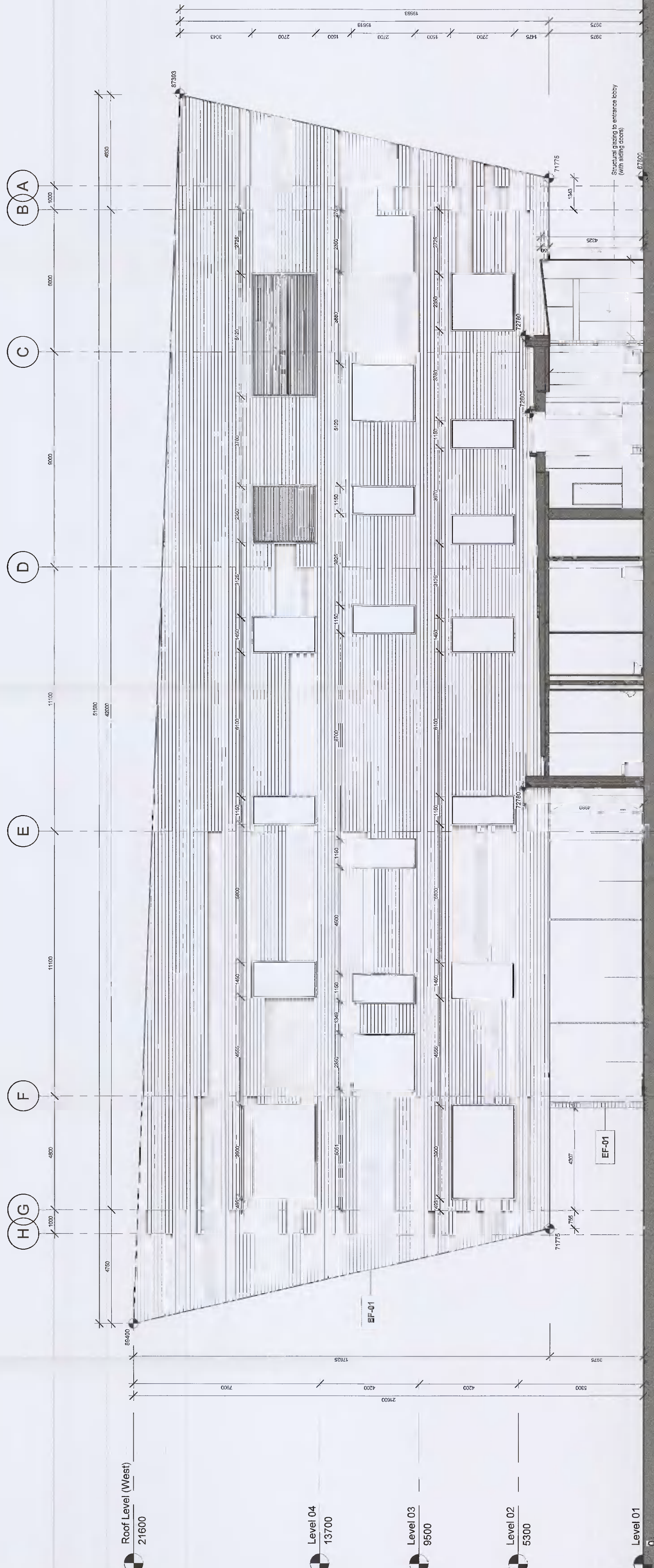
Client: Microsoft  
 Project: Offices (CAB)  
 Proposed Elevation  
 Sheet 02

Scale: As indicated  
 By: CHD/ANL  
 Date: 11/05/21  
 Job No: S2 - Subsets for Information - Planning  
 Rev: P02  
 2035  
 A1302

© Donnelly Turpin Architects



**1** ELEVATION 03 South (R)  
1:100



**2** ELEVATION 05 South(O)  
1:100