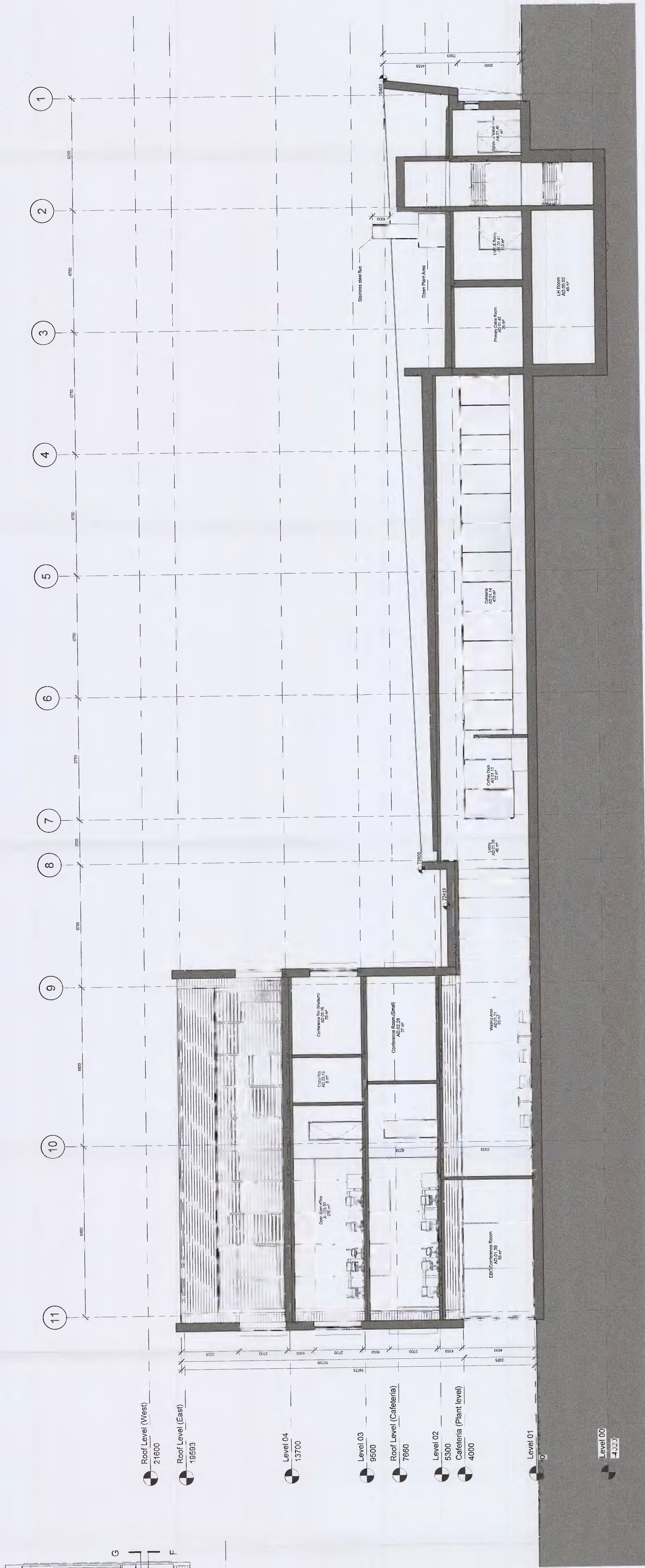


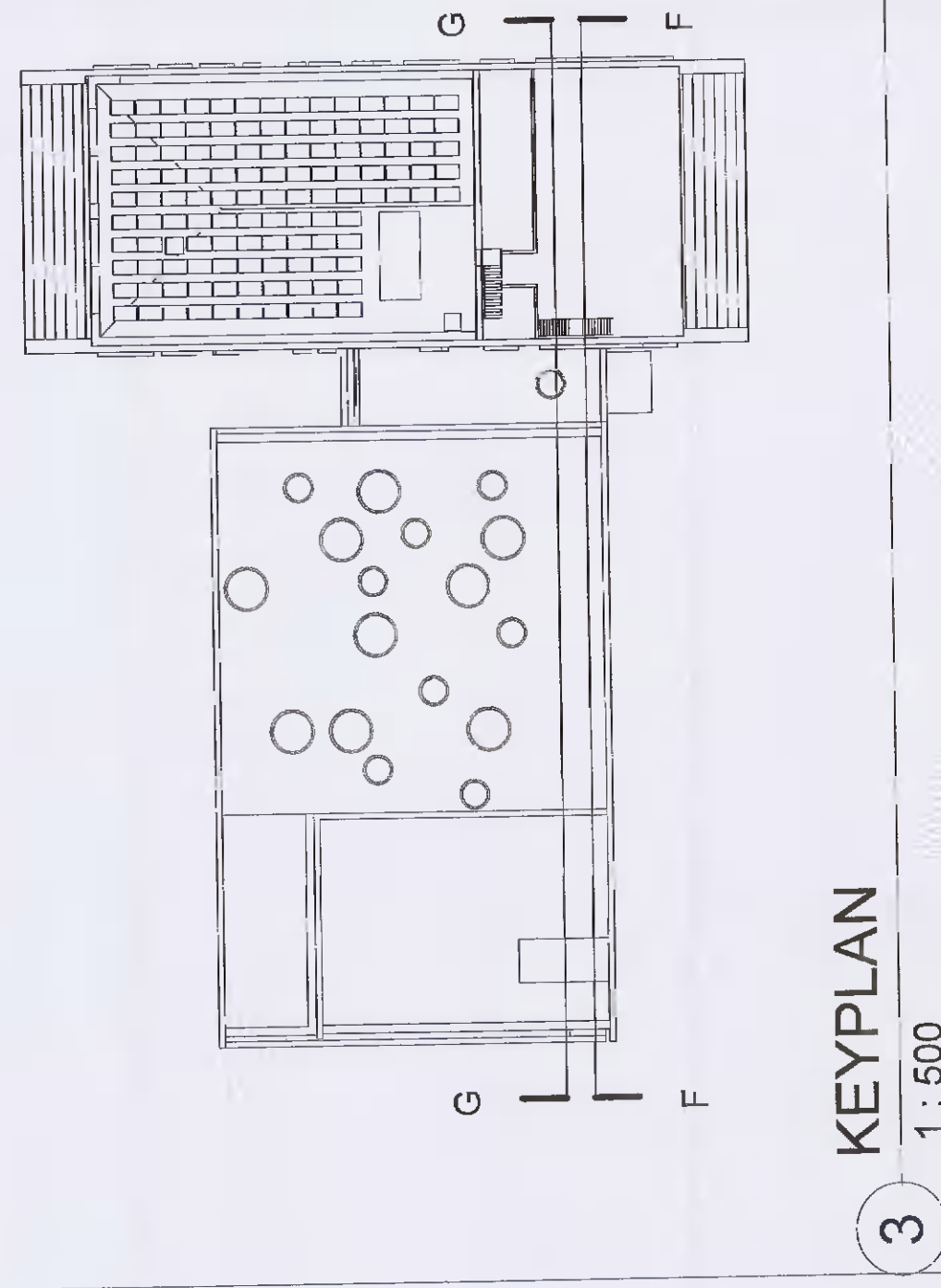
Approvals:
 Client: Microsoft
 Date: 11/05/21
 Microsoft Mechanical Engineer / Arun Laha
 Microsoft System Engineer / Denis O'Shea
 Microsoft Electrical Engineer / Alan Meier
 Electrical Manager / Denis Connolly
 Safety Manager / Denis Connolly
 Designation: Designation
 License Number / Electrical License / 24727
 Designation: Designation

- General Notes:**
- This is not an installation drawing and shows only the general layout of the equipment. All dimensions are in millimeters (mm) unless noted otherwise. All levels are in meters (m) unless noted otherwise.
 - Do not scale. Work to figured dimensions only.
 - This drawing shall be used in conjunction with the contract documents, including but not limited to the contract documents, including but not limited to the contract documents, including but not limited to the contract documents.
 - All services crossing the movement joints shall be installed in accordance with the movement joints as indicated in the contract documents, including but not limited to the contract documents, including but not limited to the contract documents.
 - All services crossing the movement joints shall be installed in accordance with the movement joints as indicated in the contract documents, including but not limited to the contract documents, including but not limited to the contract documents.
 - The Contractor shall provide the necessary structural steelwork and reinforcement for the equipment as indicated in the contract documents, including but not limited to the contract documents, including but not limited to the contract documents.
 - The Contractor shall provide the necessary structural steelwork and reinforcement for the equipment as indicated in the contract documents, including but not limited to the contract documents, including but not limited to the contract documents.
 - The Contractor shall provide the necessary structural steelwork and reinforcement for the equipment as indicated in the contract documents, including but not limited to the contract documents, including but not limited to the contract documents.

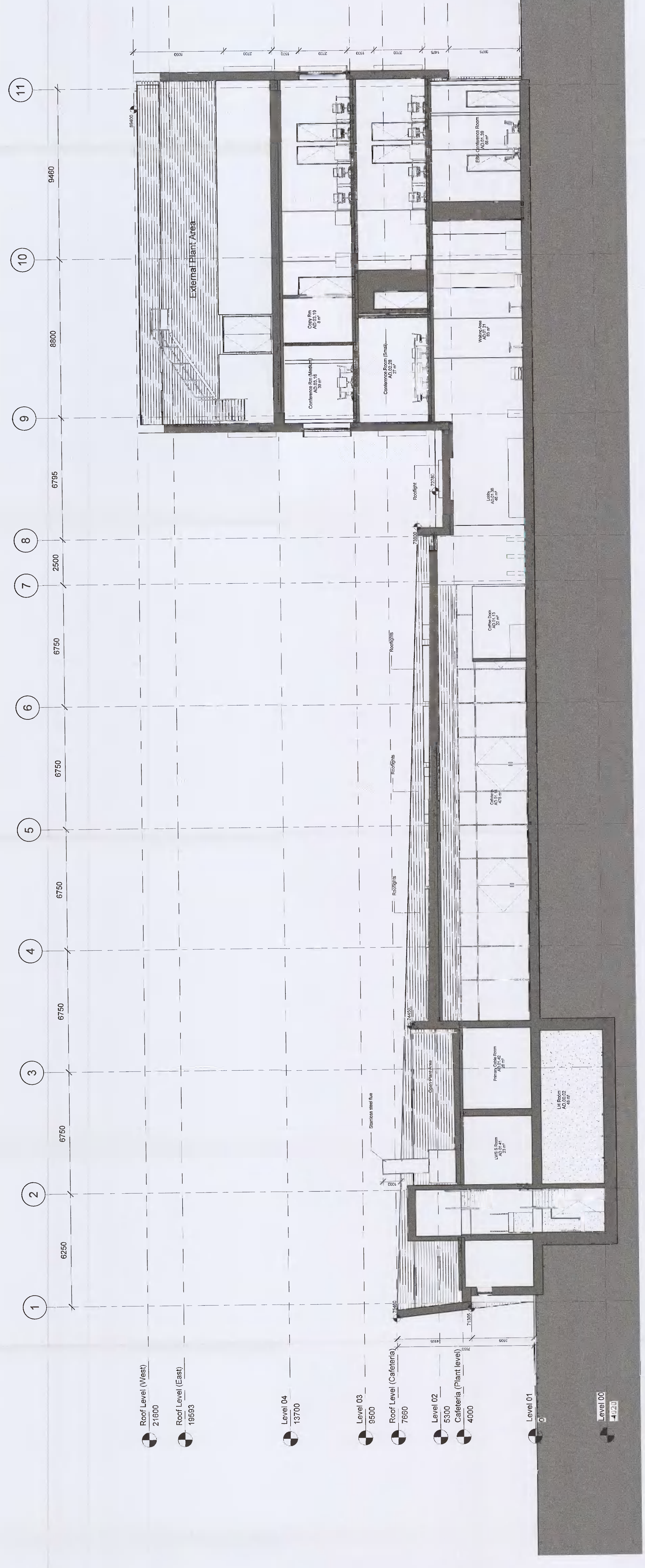


- Roof Level (West) 21600
- Roof Level (East) 18500
- Level 04 13700
- Level 03 9500
- Roof Level (Cafeteria) 7660
- Level 02 5300
- Cafeteria (Plant level) 4000
- Level 01 0
- Level 00 -1120

SECTION F-F
1 1:100



KEYPLAN
3 1:500



- Roof Level (West) 21600
- Roof Level (East) 18500
- Level 04 13700
- Level 03 9500
- Roof Level (Cafeteria) 7660
- Level 02 5300
- Cafeteria (Plant level) 4000
- Level 01 0
- Level 00 -1120

SECTION G-G
2 1:100

POJ: 20/06/21 Issued for Planning
 POJ: 21/05/21 Issued for 50%
 Date: Revision Description
ARUP **Microsoft**
DONNELLY TUSPIN ARCHITECTS
 40 Capital Street, Dublin, D01 D0K2
 Tel: +353 (0)1 452 2000
 Fax: +353 (0)1 452 2001
 Web: www.donnellytuspין.com

Client: Microsoft Operations Ireland Ltd, South County Business Park, One Microsoft Court, Carrimallan and Leopardstown, Dublin, D18 D8KX
 DUB 1415
 Proposed Modifications to Previously Approved Scheme (Submittal)

Drawing Title: Proposed Office (CAB) Section F-F, G-G
 Scale: As Indicated
 Date: 11/05/21
 Drawn: A.L.
 Checked: A.L.
 Status: S2 - Suitable for Information - Planning
 Project No: 2035
 Revision: P02
 A1203