

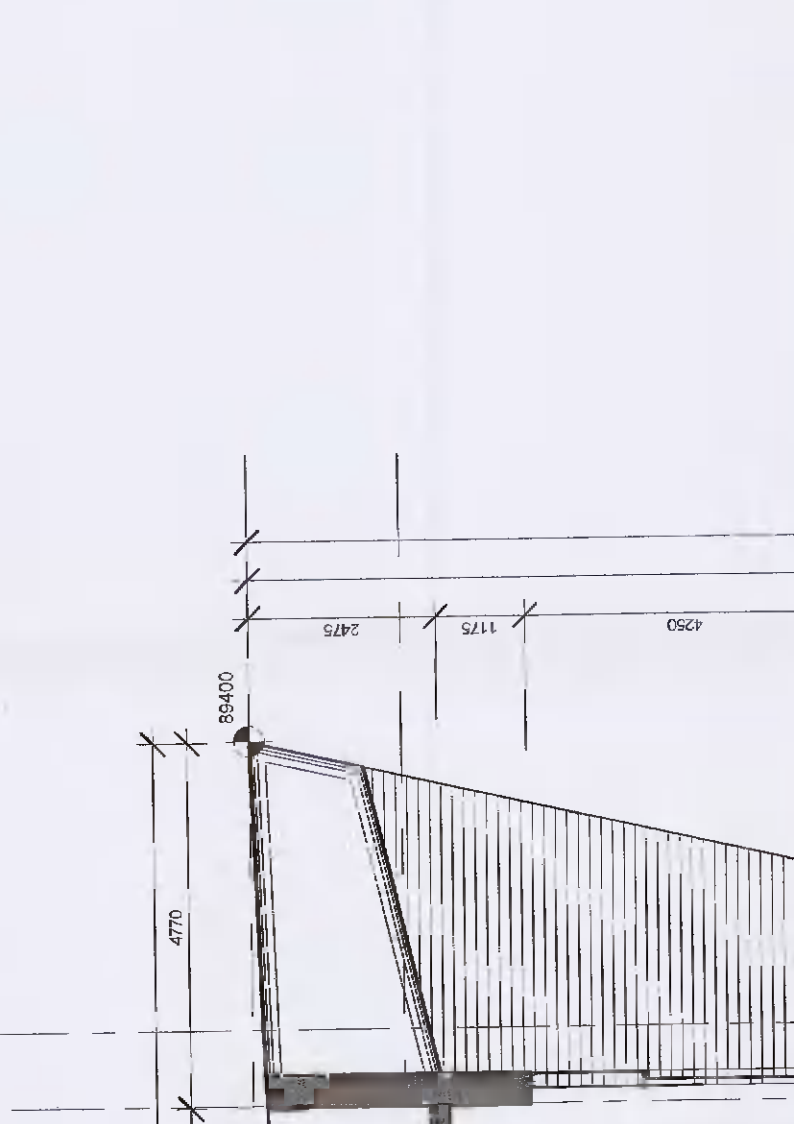
- General Notes:**
1. This set of architectural drawings and shows design intent information only.
 2. All dimensions are in millimeters (mm) unless noted otherwise.
 3. Do not scale work to figure dimensions only. Building services documents and other relevant information shall be coordinated with the manufacturer of the equipment and other relevant information.
 4. Equipment and other details are not manufacturer specific. Contractor selected equipment shall meet equipment specifications through the manufacturer's literature.
 5. Components shall be fire stopped to achieve a minimum fire resistance rating of 120 minutes. All services crossing fire movement joints shall be fire stopped to achieve a minimum fire resistance rating of 120 minutes.
 6. All services crossing fire movement joints shall be fire stopped to achieve a minimum fire resistance rating of 120 minutes.
 7. The contractor will produce fully coordinated installation drawings prior to installation for approval.
 8. The contractor will produce as built drawings prior to handover for approval.

Microsoft Word 2010
 Microsoft Project 2010
 Microsoft Access 2010
 Microsoft Excel 2010
 Microsoft PowerPoint 2010
 Microsoft Edge
 Microsoft Teams
 Microsoft OneDrive

Microsoft Word 2010
 Microsoft Project 2010
 Microsoft Access 2010
 Microsoft Excel 2010
 Microsoft PowerPoint 2010
 Microsoft Edge
 Microsoft Teams
 Microsoft OneDrive

Microsoft Word 2010
 Microsoft Project 2010
 Microsoft Access 2010
 Microsoft Excel 2010
 Microsoft PowerPoint 2010
 Microsoft Edge
 Microsoft Teams
 Microsoft OneDrive

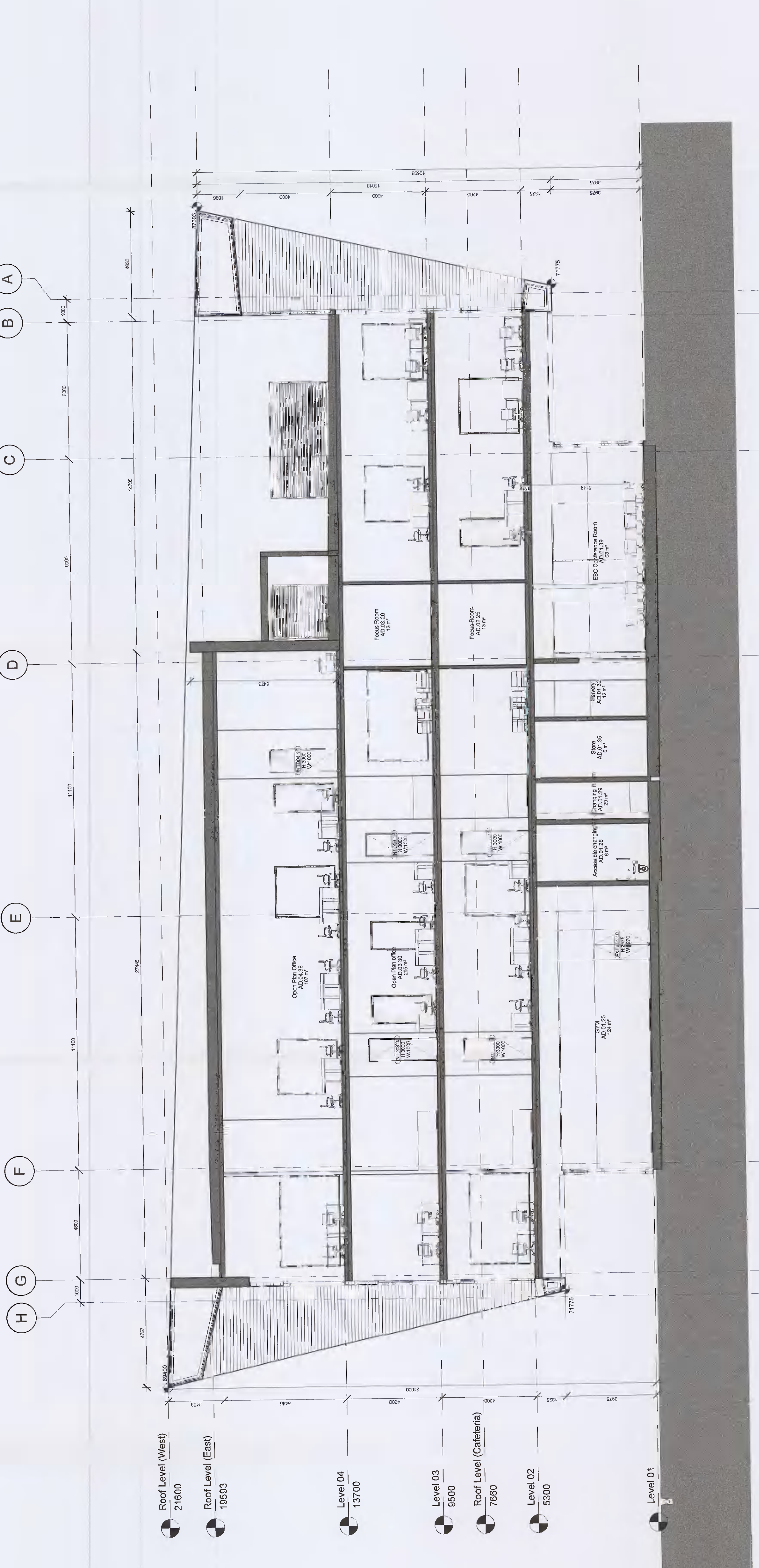
Microsoft Word 2010
 Microsoft Project 2010
 Microsoft Access 2010
 Microsoft Excel 2010
 Microsoft PowerPoint 2010
 Microsoft Edge
 Microsoft Teams
 Microsoft OneDrive



3 KEYPLAN
1:500



1 SECTION D-D
1:100



2 SECTION E-E
1:100

P02 20/09/21 Issued for Planning
 P01 12/09/21 Issued for EIR
 P00 01/09/21 Issue for Information - Planning
 P00 01/09/21 Issue for Information - Planning

ARUP **Microsoft**
DONNELLY TURPIN ARCHITECTS
 50 Carver Street Lower Dublin, D08 D80
 Tel: +353 1 452 2200
 Email: info@donnellyturpin.com
 Microsoft Operations Ireland Ltd South County
 Business Park, One Microsoft Center
 Park Road, Ballybrack, Dublin, D18 D88
 Project No: 20335
 Drawing No: A1202
 Scheme: SD20A0283

Drawing Title: Proposed Office (CAB) Section D-D, E-E
 Scale: A3
 Rev: Architecture
 Job No: 20335
 Rev: P02
 Drawing No: A1202

Drawing Title: Proposed Office (CAB) Section D-D, E-E
 Scale: A3
 Rev: Architecture
 Job No: 20335
 Rev: P02
 Drawing No: A1202

Drawing Title: Proposed Office (CAB) Section D-D, E-E
 Scale: A3
 Rev: Architecture
 Job No: 20335
 Rev: P02
 Drawing No: A1202

Drawing Title: Proposed Office (CAB) Section D-D, E-E
 Scale: A3
 Rev: Architecture
 Job No: 20335
 Rev: P02
 Drawing No: A1202

Drawing Title: Proposed Office (CAB) Section D-D, E-E
 Scale: A3
 Rev: Architecture
 Job No: 20335
 Rev: P02
 Drawing No: A1202

Drawing Title: Proposed Office (CAB) Section D-D, E-E
 Scale: A3
 Rev: Architecture
 Job No: 20335
 Rev: P02
 Drawing No: A1202