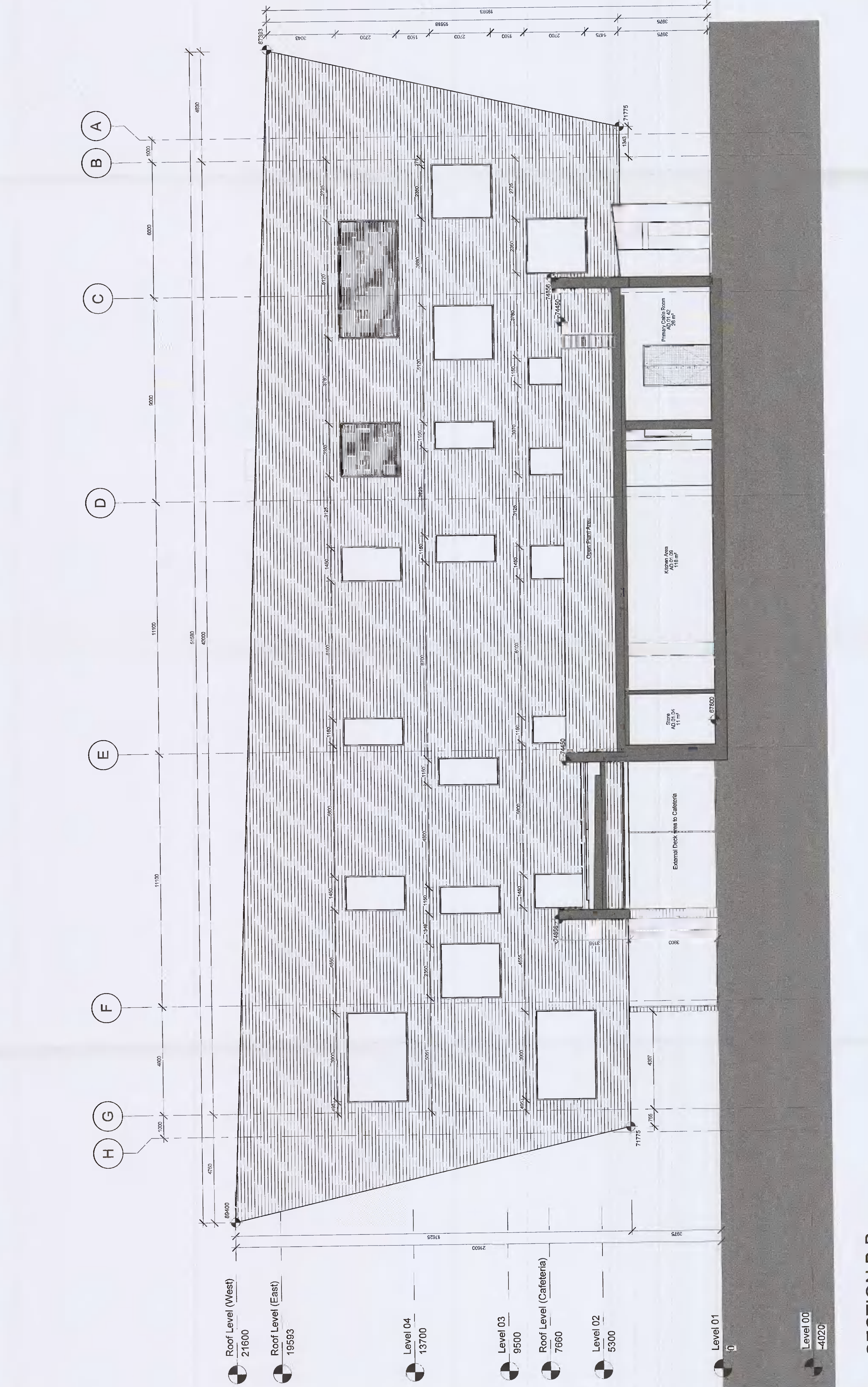
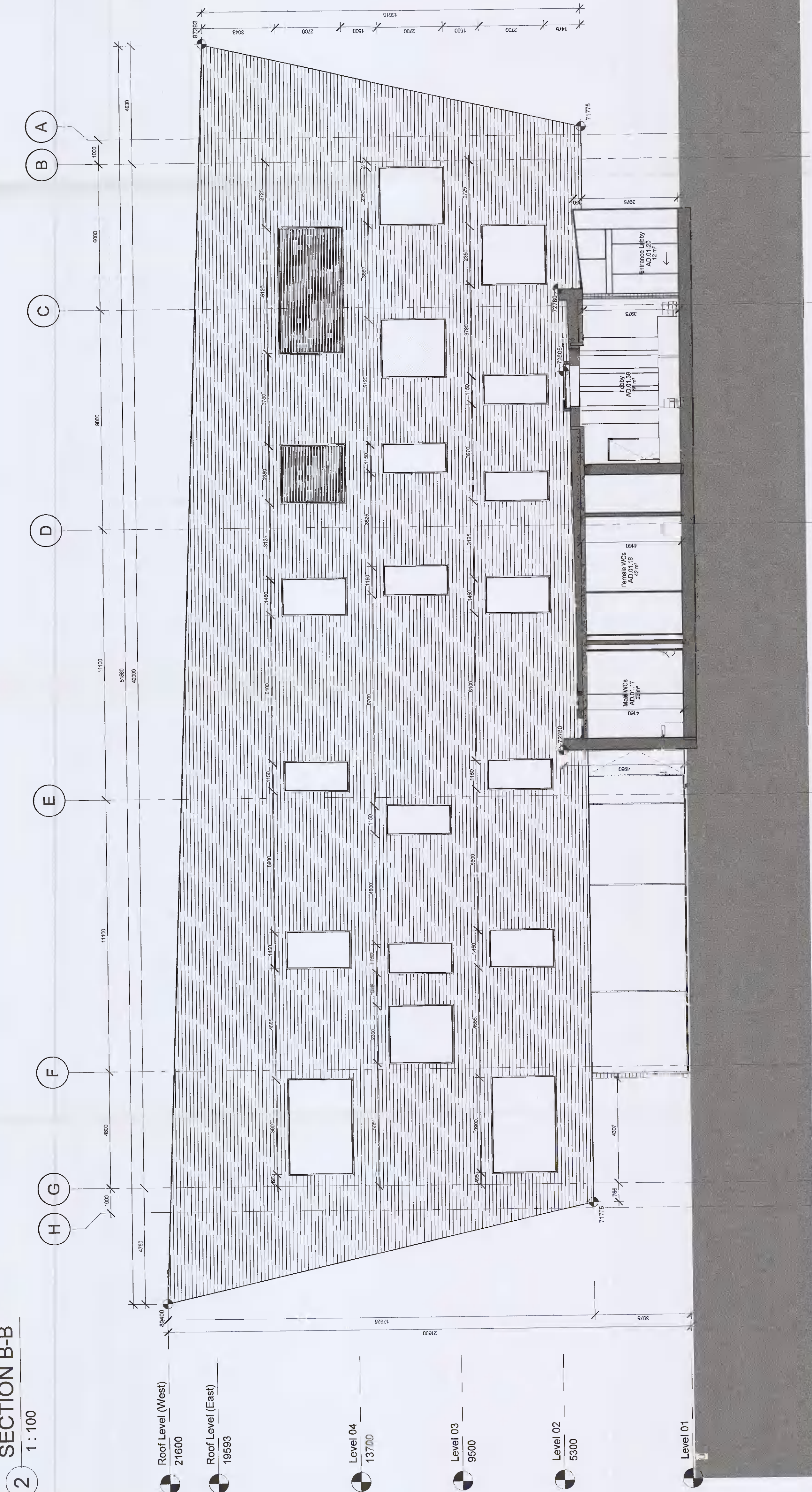


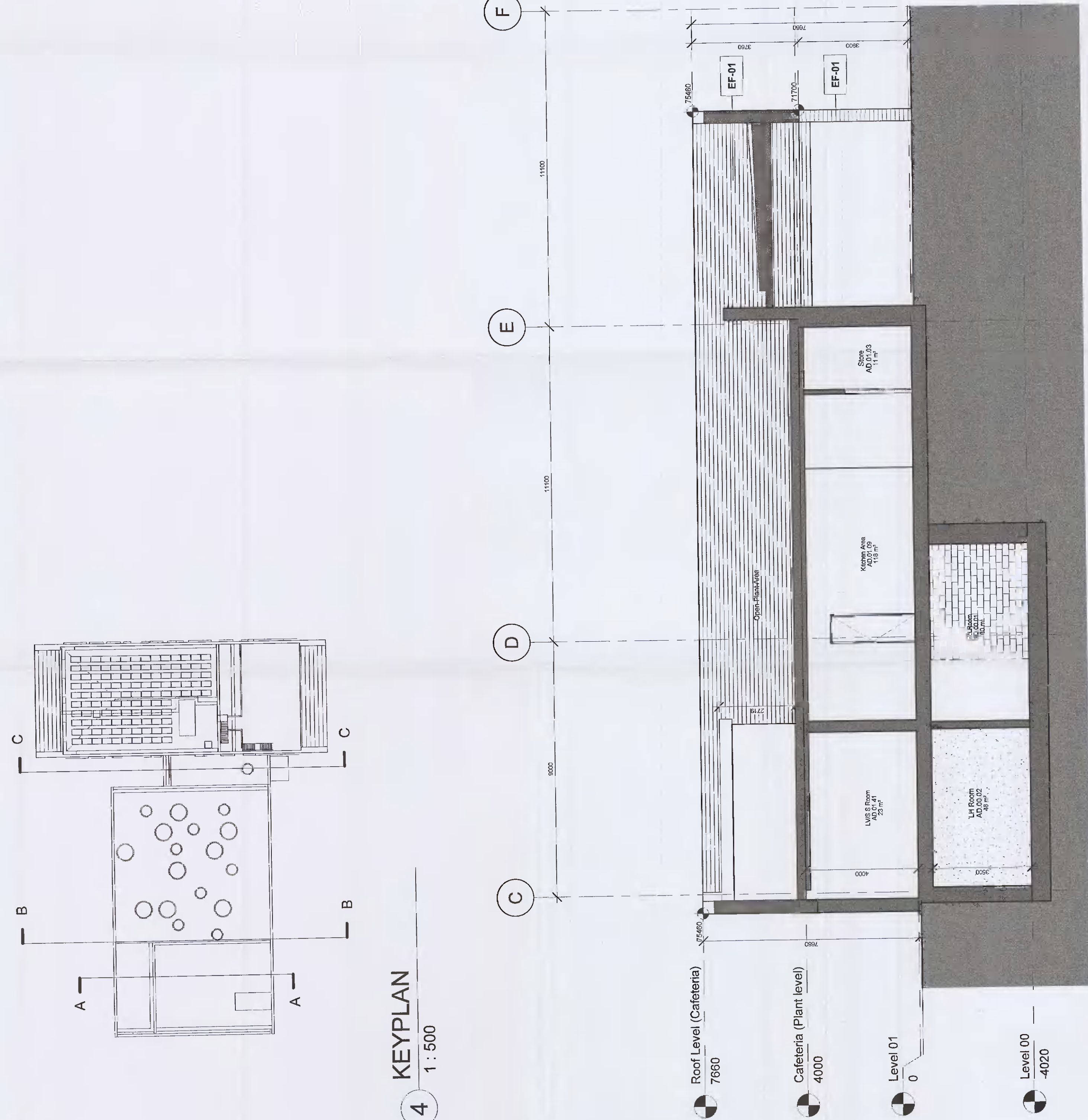
- General Notes:**
- This is not an installation drawing and shows general dimensions only. All dimensions are in millimeters (mm) unless noted otherwise. All levels are in meters (m) unless noted otherwise. Work to be figured dimensions only.
  - Do not scale. Work to be figured dimensions only.
  - Dimensions are given to the centerline of the building services ducts and other relevant contract documents.
  - Contract documents are not manufacturer specific. Contractor selected equipment shall meet the given constraints and long lead equipment will be ordered in advance of the construction start date.
  - Contract documents shall be fire stopped to achieve a rating equivalent to the compartment and shall be installed to accommodate the movement of the equipment. All services crossing the compartment shall be documented. All services shall be documented in the insulation drawings prior to installation for approval.
  - Contract documents shall be fire stopped to achieve a rating equivalent to the compartment and shall be installed to accommodate the movement of the equipment. All services crossing the compartment shall be documented. All services shall be documented in the insulation drawings prior to installation for approval.
  - Contract documents shall be fire stopped to achieve a rating equivalent to the compartment and shall be installed to accommodate the movement of the equipment. All services crossing the compartment shall be documented. All services shall be documented in the insulation drawings prior to installation for approval.
  - Contract documents shall be fire stopped to achieve a rating equivalent to the compartment and shall be installed to accommodate the movement of the equipment. All services crossing the compartment shall be documented. All services shall be documented in the insulation drawings prior to installation for approval.



4 KEYPLAN  
1:500



2 SECTION B-B  
1:100



1 SECTION A-A  
1:100



3 SECTION C-C  
1:100